

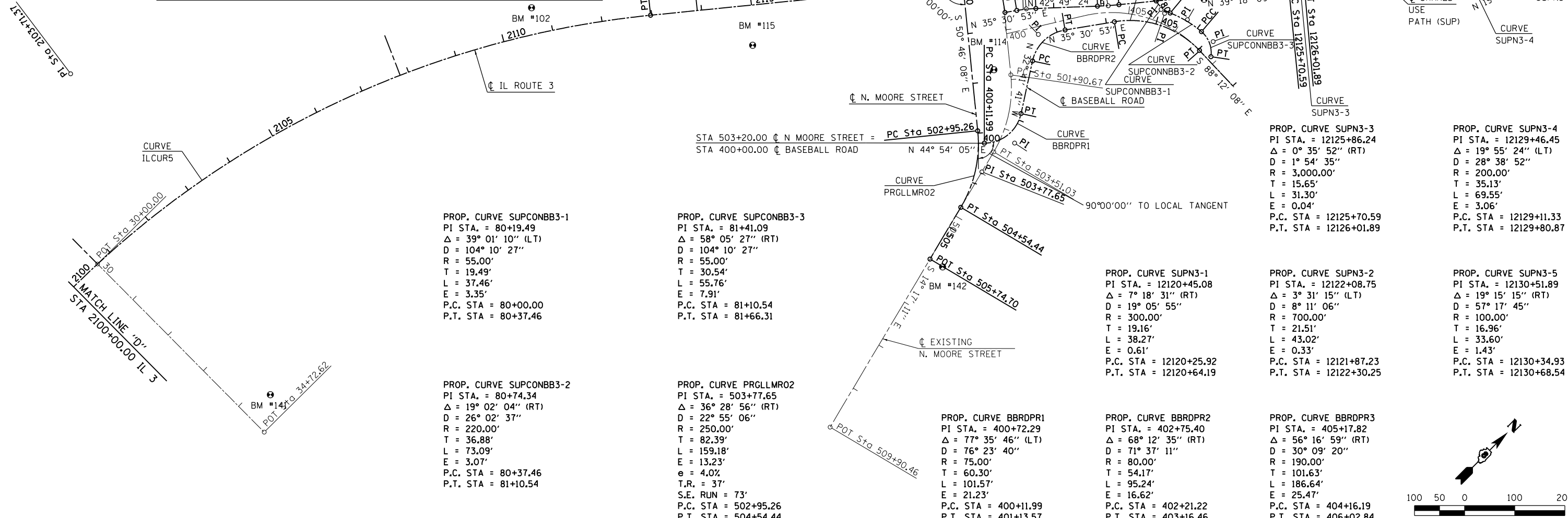
PROP. CURVE IL3CUR5
 PI STA. = 2103+71.37
 $\Delta = 62^\circ 41' 06''$ (RT)
 D = 3° 00' 00"
 R = 1,909.86'
 T = 1,163.15'
 L = 2,089.50'
 E = 326.32'
 e = 4.0%
 T.R. = 52'
 S.E. RUN = 155'
 P.C. STA = 2092+08.22
 P.T. STA = 2112+97.72

BENCHMARKS

- BM 102 FOUND CUT "□" ON CENTER OF NORTH CONCRETE PIPE LOCATED ON WEST SIDE OF IL 3. +/- 0.2 MILES SOUTH OF INTERSECTION OF CALL ROAD AND IL 3.
 STA 2110+69, 53' LT ELEV = 640.67'
- BM 113 TOP CENTER POINT OF RIGHT OF WAY MARKER ON EAST SIDE OF IL 3, NEAR BASEBALL FIELD. +/- 0.1 MILES NORTH OF INTERSECTION OF IL 3 AND NORTH MOORE STREET.
 STA 2123+99, 79' RT ELEV = 656.30'
- BM 114 CHISELED "□" ON 24" DIAMETER CONCRETE FLARED END SECTION ON EAST SIDE OF IL 3 AND SOUTH SIDE OF NORTH MOORE STREET, SOUTHEAST QUADRANT OF INTERSECTION OF IL 3 AND NORTH MOORE STREET.
 STA 2119+69, 177' RT ELEV = 653.74'
- BM 115 CHISELED "□" ON SEWER FORCE MAIN, 6' OUTSIDE DIAMETER MANHOLE, FLAT LID CONCRETE STRUCTURE ON EAST SIDE OF IL 3. +/- 0.1 MILES SOUTH OF INTERSECTION OF IL 3 AND NORTH MOORE ROAD.
 STA 2114+94, 80' RT ELEV = 648.52'
- BM 141 CHISELED "X" ON SOUTH CAP BOLT ON TOP FLANGE OF FIRE HYDRANT ON NORTH SIDE OF COLUMBIA AVENUE AND STATION CROSSING.
 STA 34+28, 61' LT ELEV = 644.10'
- BM 142 TOP CENTER POINT OF RIGHT OF WAY MARKER ON THE EAST SIDE OF NORTH MOORE STREET AT THE INTERSECTION OF NORTH MOORE STREET AND STATION CROSSING.
 STA 505+75, 29' LT ELEV = 658.76'
- BM 143 TOP CENTER POINT OF RIGHT OF WAY MARKER ON THE NORTH SIDE OF GALL ROAD. +/- 0.1 MILES WEST OF THE INTERSECTION OF IL 3 AND GALL ROAD. NEXT TO POWER POLE.
 STA 495+29, 18' LT ELEV = 638.35'

PROP. CURVE PRGLLMRO1
 PI STA. = 496+34.77
 $\Delta = 39^\circ 32' 59''$ (RT)
 D = 15° 16' 44"
 R = 375.00'
 T = 134.82'
 L = 258.85'
 E = 23.50'
 e = 3.8%
 T.R. = 37'
 S.E. RUN = 69'
 P.C. STA = 494+99.95
 P.T. STA = 497+58.80

PROP. CURVE NMOOREPR1
 PI STA. = 605+56.35
 $\Delta = 40^\circ 43' 40''$ (LT)
 D = 15° 16' 44"
 R = 375.00'
 T = 139.19'
 L = 266.56'
 E = 25.00'
 e = 4.0%
 T.R. = 39'
 S.E. RUN = 77'
 P.C. STA = 604+17.16
 P.T. STA = 606+83.72



PROP. CURVE SUPCONBB3-1
 PI STA. = 80+19.49
 $\Delta = 39^\circ 01' 10''$ (LT)
 D = 104° 10' 27"
 R = 55.00'
 T = 19.49'
 L = 37.46'
 E = 3.35'
 P.C. STA = 80+00.00
 P.T. STA = 80+37.46

PROP. CURVE SUPCONBB3-3
 PI STA. = 81+41.09
 $\Delta = 58^\circ 05' 27''$ (RT)
 D = 104° 10' 27"
 R = 55.00'
 T = 30.54'
 L = 55.76'
 E = 7.91'
 P.C. STA = 81+10.54
 P.T. STA = 81+66.31

PROP. CURVE SUPCONBB3-2
 PI STA. = 80+74.34
 $\Delta = 19^\circ 02' 04''$ (RT)
 D = 26° 02' 37"
 R = 220.00'
 T = 36.88'
 L = 73.09'
 E = 3.07'
 P.C. STA = 80+37.46
 P.T. STA = 81+10.54

PROP. CURVE PRGLLMRO2
 PI STA. = 503+77.65
 $\Delta = 36^\circ 28' 56''$ (RT)
 D = 22° 55' 06"
 R = 250.00'
 T = 82.39'
 L = 159.18'
 E = 13.23'
 e = 4.0%
 T.R. = 37'
 S.E. RUN = 73'
 P.C. STA = 502+95.26
 P.T. STA = 504+54.44

PROP. CURVE BBRDPR1
 PI STA. = 400+72.29
 $\Delta = 77^\circ 35' 46''$ (LT)
 D = 76° 23' 40"
 R = 75.00'
 T = 60.30'
 L = 101.57'
 E = 21.23'
 P.C. STA = 400+11.99
 P.T. STA = 401+13.57

PROP. CURVE SUPN3-1
 PI STA. = 12120+45.08
 $\Delta = 7^\circ 18' 31''$ (RT)
 D = 19° 05' 55"
 R = 300.00'
 T = 19.16'
 L = 38.27'
 E = 0.61'
 P.C. STA = 12120+25.92
 P.T. STA = 12120+64.19

PROP. CURVE BBRDPR2
 PI STA. = 402+75.40
 $\Delta = 68^\circ 12' 35''$ (RT)
 D = 71° 37' 11"
 R = 80.00'
 T = 54.17'
 L = 95.24'
 E = 16.62'
 P.C. STA = 402+21.22
 P.T. STA = 403+16.46

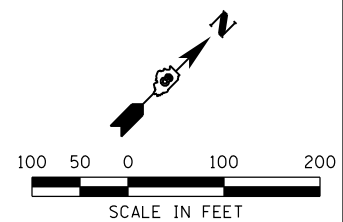
PROP. CURVE SUPN3-3
 PI STA. = 12125+86.24
 $\Delta = 0^\circ 35' 52''$ (RT)
 D = 1° 54' 35"
 R = 3,000.00'
 T = 15.65'
 L = 31.30'
 E = 0.04'
 P.C. STA = 12125+70.59
 P.T. STA = 12126+01.89

PROP. CURVE SUPN3-2
 PI STA. = 12122+08.75
 $\Delta = 3^\circ 31' 15''$ (LT)
 D = 19° 05' 55"
 R = 700.00'
 T = 21.51'
 L = 43.02'
 E = 0.33'
 P.C. STA = 12121+87.23
 P.T. STA = 12122+30.25

PROP. CURVE BBRDPR3
 PI STA. = 405+17.82
 $\Delta = 56^\circ 16' 59''$ (RT)
 D = 30° 09' 20"
 R = 190.00'
 T = 101.63'
 L = 186.64'
 E = 25.47'
 P.C. STA = 404+16.19
 P.T. STA = 406+02.84

PROP. CURVE SUPN3-4
 PI STA. = 12129+46.45
 $\Delta = 19^\circ 55' 24''$ (LT)
 D = 28° 38' 52"
 R = 200.00'
 T = 35.13'
 L = 69.55'
 E = 3.06'
 P.C. STA = 12129+11.33
 P.T. STA = 12129+80.87

PROP. CURVE SUPN3-5
 PI STA. = 12130+51.89
 $\Delta = 19^\circ 15' 15''$ (RT)
 D = 57° 17' 45"
 R = 100.00'
 T = 16.96'
 L = 33.60'
 E = 1.43'
 P.C. STA = 12130+34.93
 P.T. STA = 12130+68.54



LAST SAVED = 1/25/2013 3:29:07 PM
 PEN TABLE = W:\444141
 PLOT DRIVER = pdfplotlayers\pltdrvr

FILE NAME =	USER NAME = beriechmann	DESIGNED -	REVISED -	STATE OF ILLINOIS DEPARTMENT OF TRANSPORTATION		ALIGNMENTS, TIES, AND BENCHMARKS		F.A.P. R.T.E. = 312	SECTION = 68-WRS-1	COUNTY = MONROE	TOTAL SHEETS = 760	SHEET NO. = 85	
1:\1001100\Phase II - 76817\Cad\T\Plans\006_0876817-sht-ATB-5.dgn	PLOT SCALE = 200.0000' / in.	DRAWN -	REVISED -			SCALE: 1" = 100'	SHEET NO. 5 OF 20 SHEETS	STA. 2100+00.00 TO STA. 2131+00.00	CONTRACT NO. 76817		ILLINOIS FED. AID PROJECT		
	PLOT DATE = 1/25/2013 3:29:07 PM	CHECKED -	REVISED -										
		DATE -	REVISED -										