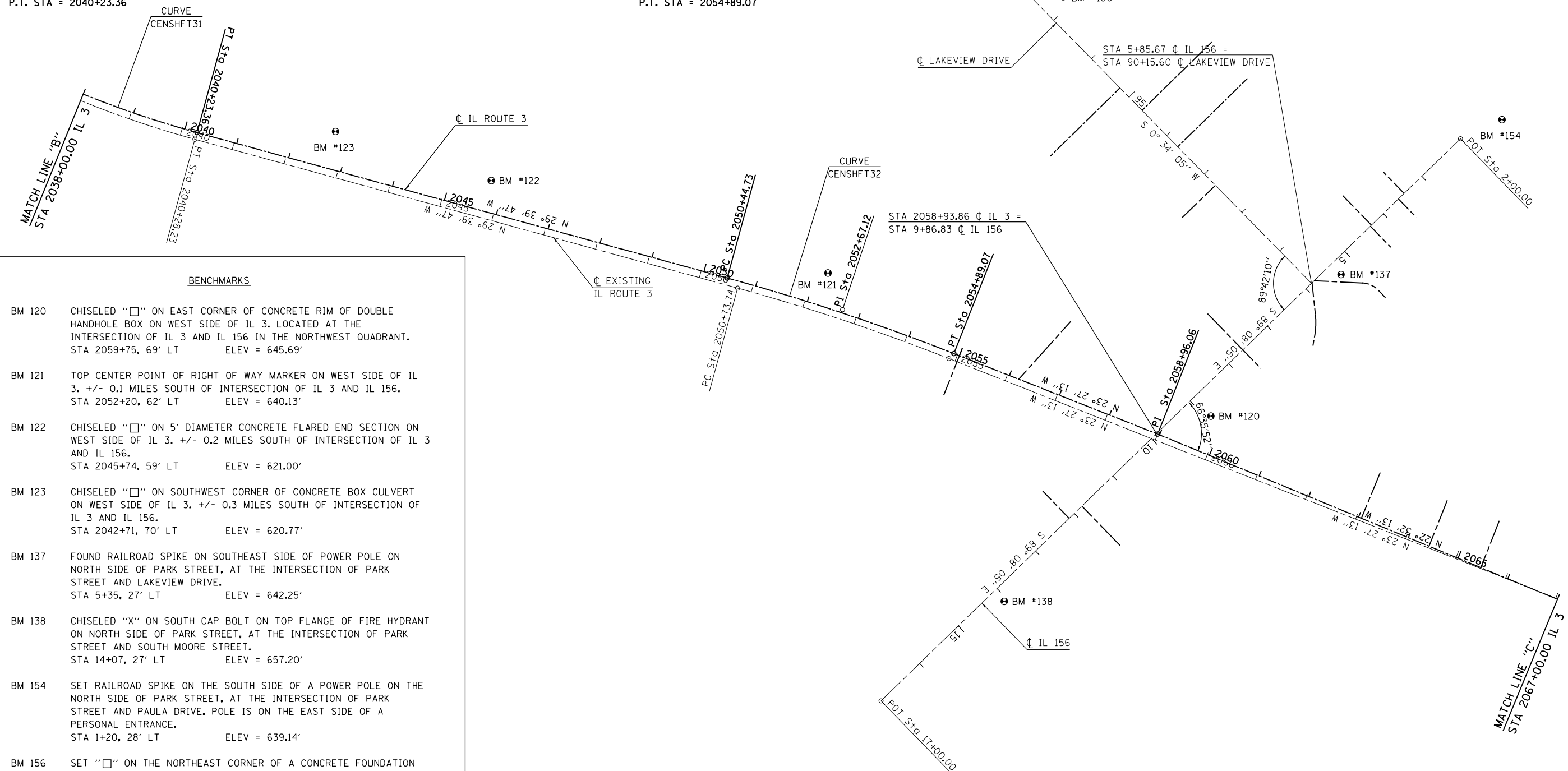


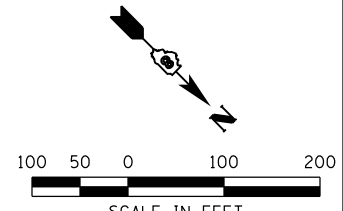
PROP. CURVE CENSHFT31  
 PI STA. = 2036+53.48  
 $\Delta = 22^\circ 38' 38''$  (LT)  
 $D = 3^\circ 01' 14''$   
 $R = 1,896.86'$   
 $T = 379.79'$   
 $L = 749.66'$   
 $E = 37.65'$   
 $e = 5.0\%$   
 $T.R. = 42'$   
 $S.E. RUN = 167'$   
 $P.C. STA = 2032+73.70$   
 $P.T. STA = 2040+23.36$

PROP. CURVE CENSHFT32  
 PI STA. = 2052+67.12  
 $\Delta = 6^\circ 12' 34''$  (RT)  
 $D = 1^\circ 23' 51''$   
 $R = 4,100.00'$   
 $T = 222.38'$   
 $L = 444.33'$   
 $E = 6.03'$   
 $e = 2.4\%$   
 $T.R. = 67'$   
 $S.E. RUN = 93'$   
 $P.C. STA = 2050+44.73$   
 $P.T. STA = 2054+89.07$



**BENCHMARKS**

- BM 120 CHISELED "□" ON EAST CORNER OF CONCRETE RIM OF DOUBLE HANDHOLE BOX ON WEST SIDE OF IL 3. LOCATED AT THE INTERSECTION OF IL 3 AND IL 156 IN THE NORTHWEST QUADRANT. STA 2059+75, 69' LT ELEV = 645.69'
- BM 121 TOP CENTER POINT OF RIGHT OF WAY MARKER ON WEST SIDE OF IL 3. +/- 0.1 MILES SOUTH OF INTERSECTION OF IL 3 AND IL 156. STA 2052+20, 62' LT ELEV = 640.13'
- BM 122 CHISELED "□" ON 5' DIAMETER CONCRETE FLARED END SECTION ON WEST SIDE OF IL 3. +/- 0.2 MILES SOUTH OF INTERSECTION OF IL 3 AND IL 156. STA 2045+74, 59' LT ELEV = 621.00'
- BM 123 CHISELED "□" ON SOUTHWEST CORNER OF CONCRETE BOX CULVERT ON WEST SIDE OF IL 3. +/- 0.3 MILES SOUTH OF INTERSECTION OF IL 3 AND IL 156. STA 2042+71, 70' LT ELEV = 620.77'
- BM 137 FOUND RAILROAD SPIKE ON SOUTHEAST SIDE OF POWER POLE ON NORTH SIDE OF PARK STREET, AT THE INTERSECTION OF PARK STREET AND LAKEVIEW DRIVE. STA 5+35, 27' LT ELEV = 642.25'
- BM 138 CHISELED "X" ON SOUTH CAP BOLT ON TOP FLANGE OF FIRE HYDRANT ON NORTH SIDE OF PARK STREET, AT THE INTERSECTION OF PARK STREET AND SOUTH MOORE STREET. STA 14+07, 27' LT ELEV = 657.20'
- BM 154 SET RAILROAD SPIKE ON THE SOUTH SIDE OF A POWER POLE ON THE NORTH SIDE OF PARK STREET, AT THE INTERSECTION OF PARK STREET AND PAULA DRIVE. POLE IS ON THE EAST SIDE OF A PERSONAL ENTRANCE. STA 1+20, 28' LT ELEV = 639.14'
- BM 156 SET "□" ON THE NORTHEAST CORNER OF A CONCRETE FOUNDATION FOR (2) UTILITY BOXES. +/- 45' NORTH OF STATION WEST APARTMENT ENTRANCE AND +/- 30' WEST OF LAKEVIEW DRIVE. STA 97+19, 43' RT ELEV = 636.01'
- BM 157 SET CHISELED "X" ON EAST CAP BOLT OF TOP FLANGE OF FIRE HYDRANT ON THE NORTH SIDE OF PARK STREET, AT THE INTERSECTION OF PARK STREET AND STIENING STREET. STA 20+08, 42' LT ELEV = 670.04'



LAST SAVED = 1/25/2013 3:29:06 PM  
 PEN TABLE = V:\2013\11-11-13  
 PLOT DRIVER = pdfplotlayers.plt

FILE NAME =	USER NAME = beriechmann	DESIGNED -	REVISED -
I:\1001100\Phase II - 76817\Cad\T\Plans\006_0876817-sht-ATB-3.dgn		DRAWN -	REVISED -
		CHECKED -	REVISED -
		DATE -	REVISED -

**STATE OF ILLINOIS  
 DEPARTMENT OF TRANSPORTATION**



**ALIGNMENTS, TIES, AND BENCHMARKS**

SCALE: 1" = 100' SHEET NO. 3 OF 20 SHEETS STA. 2038+00.00 TO STA. 2067+00.00

F.A.P. RTE.	SECTION	COUNTY	TOTAL SHEETS	SHEET NO.
	68-WRS-1	MONROE	760	83
CONTRACT NO. 76817			ILLINOIS FED. AID PROJECT	