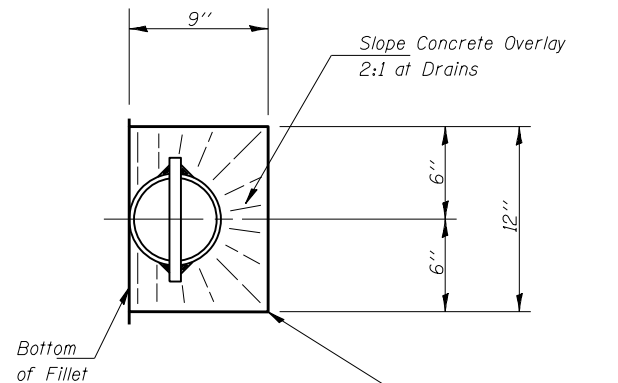
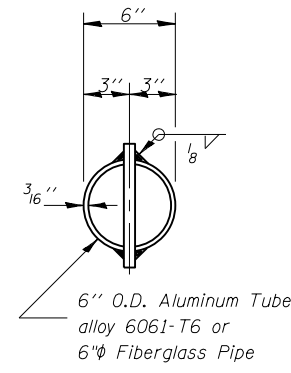


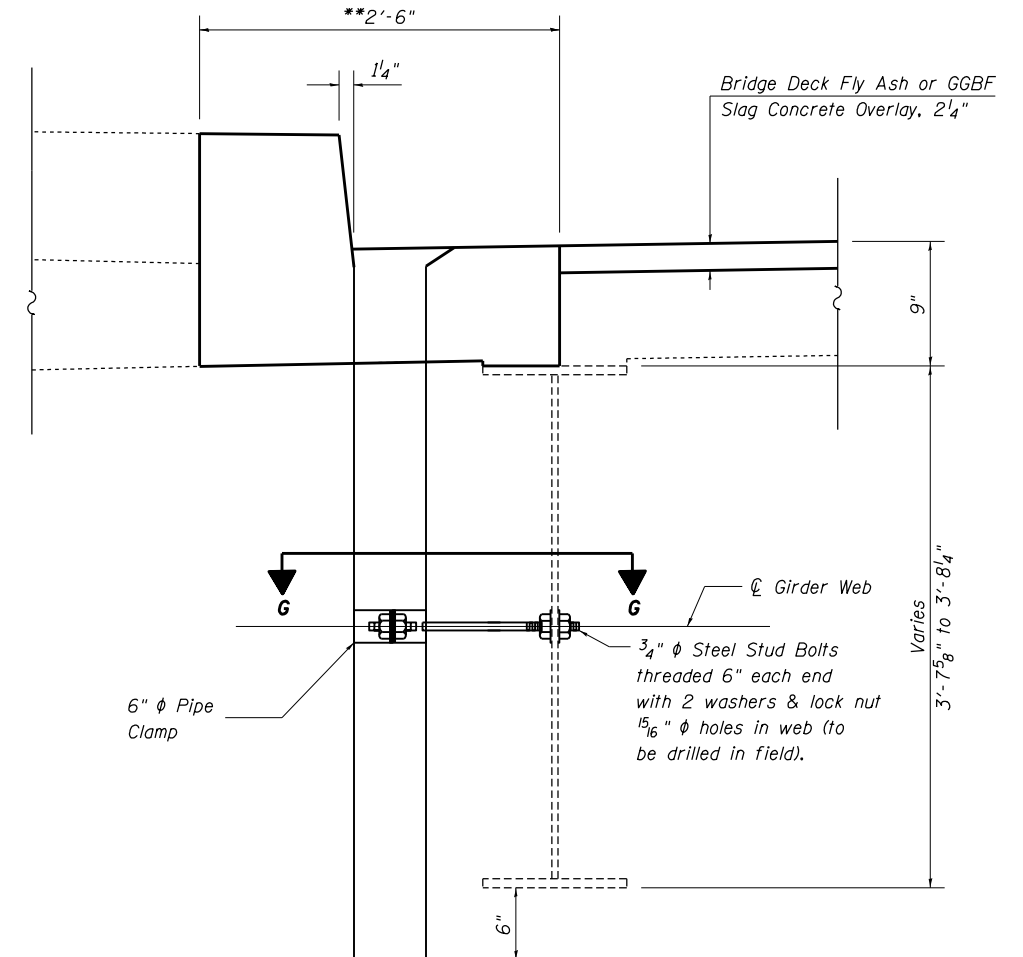
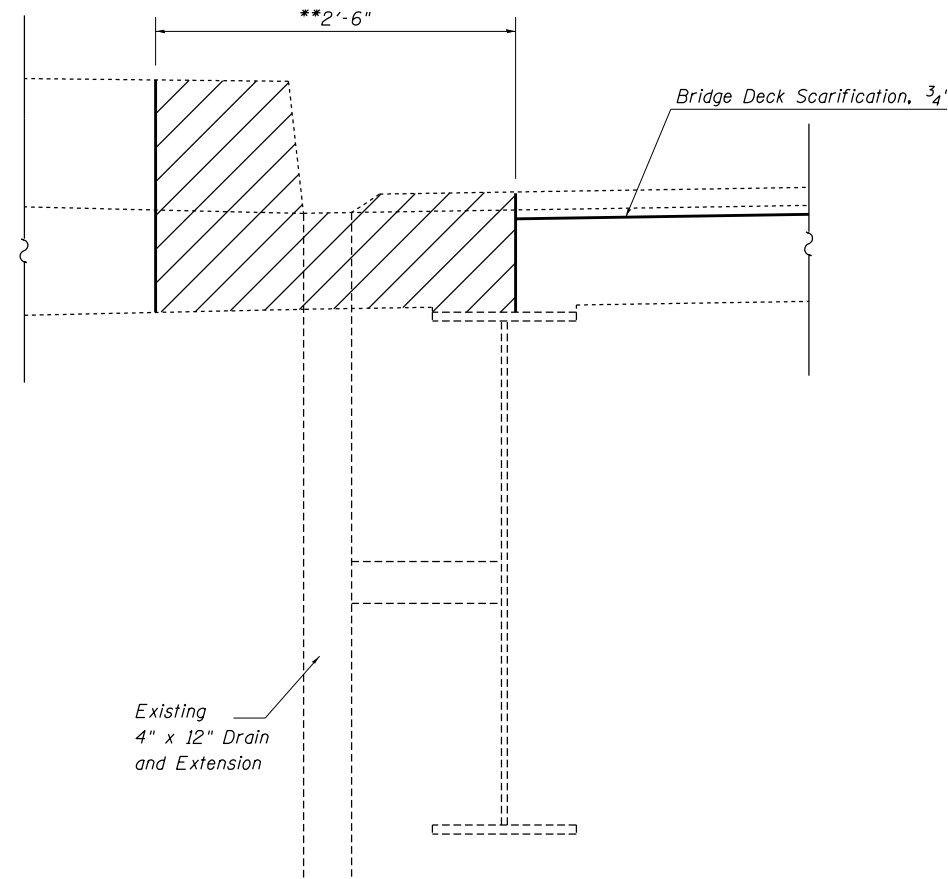
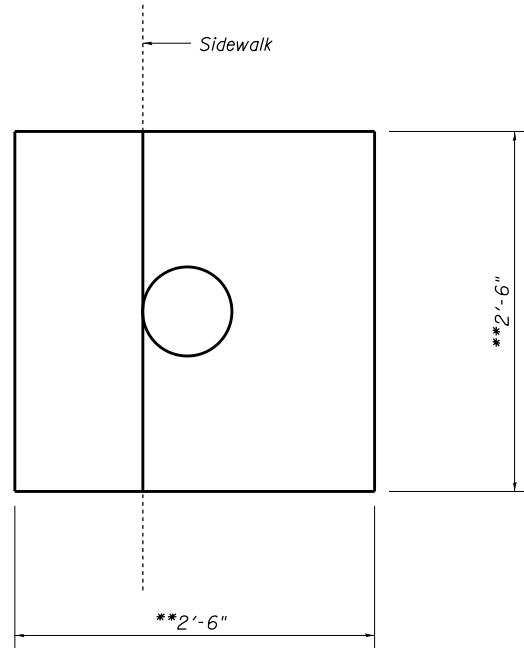
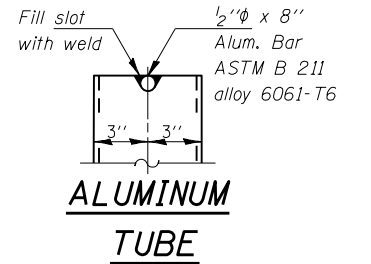
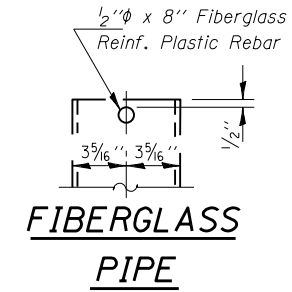
**SECTION G-G**



**DRAIN DETAIL  
TOP PLAN**



**TOP PLAN**  
(Showing Aluminum Tube)



**SECTION THRU EXISTING FLOOR DRAIN**

Hatched area indicates concrete removal at floor drain replacement.

**DRAIN REPLACEMENT DETAIL**

Note: See "Bridge Deck Patching" plan sheets for Floor Drain replacement location and Floor Drain Removal locations. See "Total Bill of Materials" for quantities.

Notes: The floor drains shall be painted to match the outside of the fascia beams. The exterior surfaces of the drains shall be cleaned according to Society of Protective Coatings Specification SSPC-SP1 prior to painting. Fiberglass pipe shall conform to ASTM D 2996, with short-time rupture strength hoop tensile stress of 30,000 p.s.i. minimum. Galvanize clamping device according to AASHTO M232. Cost of clamping device and galvanizing is included with Floor Drains.

\*\* Concrete removal and replacement dimensions shall be determined by the Engineer based on the extent of deck deterioration at each drain.

Note: Concrete removal and replacment quantites for drains are included in Deck Slab Repair as shown on "Bridge Deck Patching" plan sheets.

|  |                             |                  |           |   |  |  |                           |                          |        |              |           |
|--|-----------------------------|------------------|-----------|---|--|--|---------------------------|--------------------------|--------|--------------|-----------|
| FILE NAME =  | USER NAME = teasleyck       | DESIGNED - DFZ   | REVISED - | STATE OF ILLINOIS<br>DEPARTMENT OF TRANSPORTATION | DECK DRAIN DETAILS<br>SN. 058-0055       |  | F.A.P. RTE.               | SECTION                  | COUNTY | TOTAL SHEETS | SHEET NO. |
| ci:\pw\work\pwidot\teasleyck\d0312934\074601-sht-brdetails.dgn | 4601-sht-brdetails.dgn      | DRAWN - DFZ      | REVISED - |   |  |  | 320                       | 07 Bridge Repairs 2014-2 | MACON  | 29           | 22        |
| Default  | PLOT SCALE = 40.0000' / in. | CHECKED - MJM    | REVISED - |   | SCALE: SHEET 7 OF 14 SHEETS STA. TO STA. |  | CONTRACT NO. 74601        |                          |        |              |           |
|  | PLOT DATE = 4/8/2013        | DATE - 2/20/2013 | REVISED - |   |  |  | ILLINOIS FED. AID PROJECT |                          |        |              |           |