

F.A.P. RTE.	SECTION	COUNTY	TOTAL SHEETS	SHEET NO.
302	(34-1,34-2) N	HANCOCK	22	1
		ILLINOIS	CONTRACT NO. 72F87	

STATE OF ILLINOIS  
DEPARTMENT OF TRANSPORTATION  
DIVISION OF HIGHWAYS

# PROPOSED HIGHWAY PLANS

FAP 302 (IL 110, 336 & 94)  
SECTION (34-1, 34-2) N  
PROJECT NHPP-0302(012)

INTERSECTION IMPROVEMENT  
HANCOCK COUNTY  
C-96-020-13

INDEX OF SHEETS

- 1 COVER SHEET
- 2 GENERAL NOTES
- 3-5 SUMMARY OF QUANTITIES
- 6-7 SCHEDULE OF QUANTITIES
- 8-9 TYPICAL SECTIONS
- 10-12 PLAN SHEET
- 13-22 CROSS SECTIONS

FOR LIST OF HIGHWAY STANDARDS, SEE SHEET NO. 2

HIGHWAY CLASSIFICATION  
F.A.P. ROUTE 302 (IL 110, 336, 94)  
CLASSIFICATION: MINOR ARTERIAL

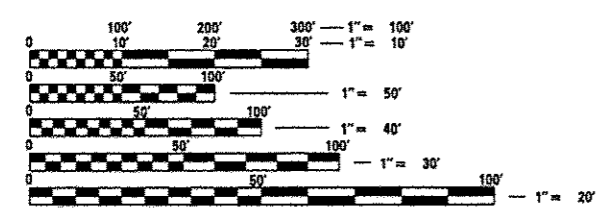
**AVERAGE DAILY TRAFFIC (2011)**

FAP 302 (IL 110/IL 336/IL 94)  
ADT=3,050-3,900 S.U.=4.8% M.U.=8.9%

TR 401/E COUNTY ROAD 250  
ADT=1,000 S.U.=13.0% M.U.=2.0%

FAS 429/400N & FAP 733/400M/L 94  
ADT=700 S.U.=3.6% M.U.=17.9%

DENVER-PLYMOUTH ROAD/TR 319/650N  
& FAS 433/650M/CH 19  
ADT=550 S.U.=5.5% M.U.=1.8%



FULL SIZE PLANS HAVE BEEN PREPARED USING STANDARD ENGINEERING SCALES. REDUCED SIZED PLANS WILL NOT CONFORM TO STANDARD SCALES. IN MAKING MEASUREMENTS ON REDUCED PLANS, THE ABOVE SCALES MAY BE USED.

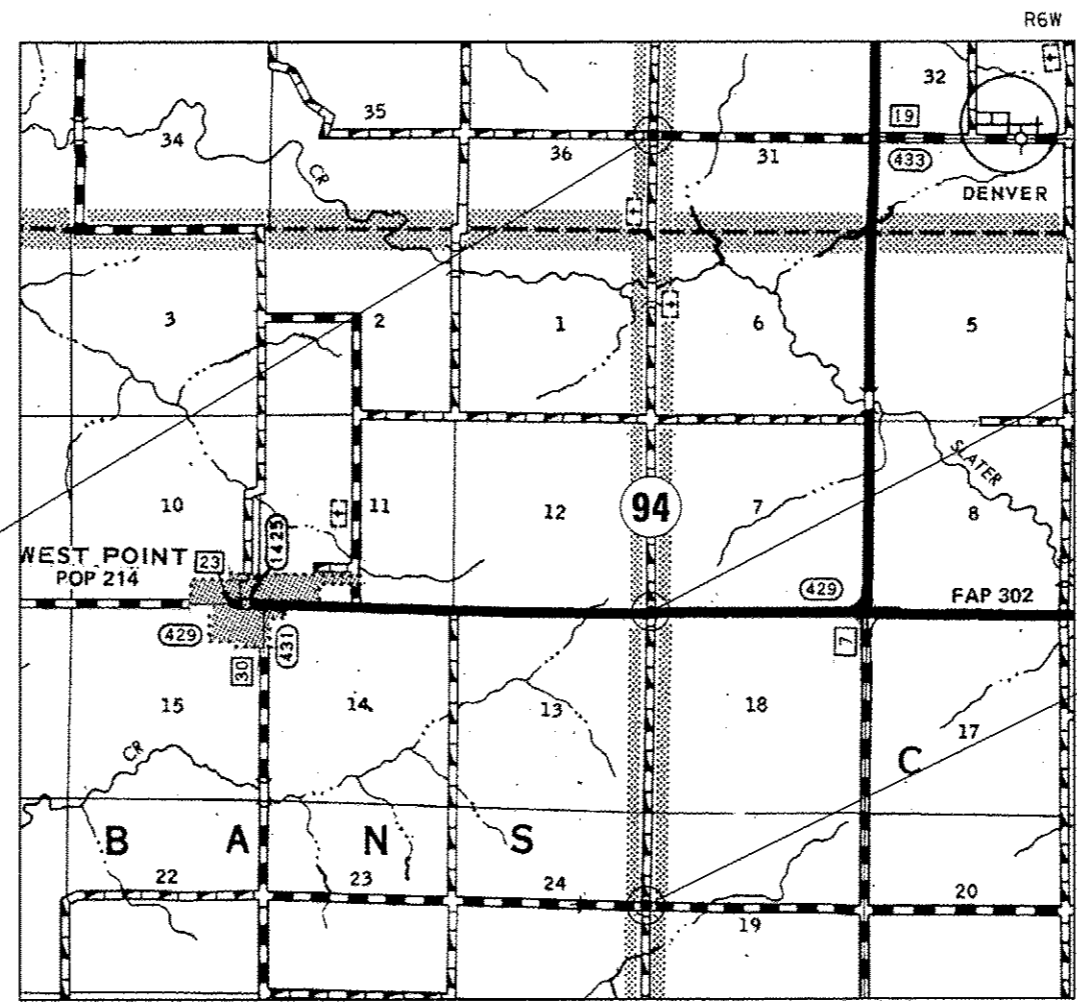
J.U.L.I.E.  
JOINT UTILITY LOCATION INFORMATION FOR EXCAVATION  
1-800-892-0123  
OR 811

SENIOR TEAM LEADER VINCE MADONIA 217-785-9046  
TEAM LEADER JAY EDWARDS 217-785-5321  
CONTRACT NO. 72F87

D-96-020-13



LOCATION OF SECTION INDICATED THUS: -



LOCATION MAP  
SCALE  
1 INCH = 1 MILE

FAS 429/400N & FAP 733/400M/L 94  
STA. 1126 + 64.14

TR 401/E COUNTY ROAD 250  
STA. 1048 + 81.53

STATE OF ILLINOIS  
DEPARTMENT OF TRANSPORTATION  
DIVISION OF HIGHWAYS

SUBMITTED Feb. 13 20 13

Ray Z. Diskal  
DEPUTY DIRECTOR OF HIGHWAYS, REGION ENGINEER

March 22 20 13  
John D. Baranzelli, P.E.  
ENGINEER OF DESIGN AND ENVIRONMENT

March 22 20 13  
Omer Osmom, P.E.  
DIRECTOR OF HIGHWAYS, CHIEF ENGINEER

PRINTED BY THE AUTHORITY  
OF THE STATE OF ILLINOIS