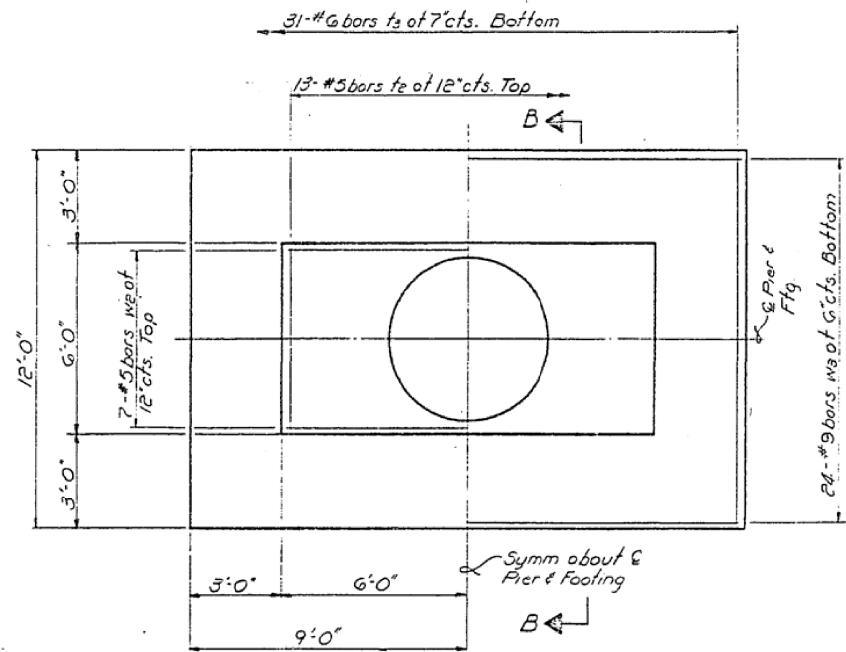
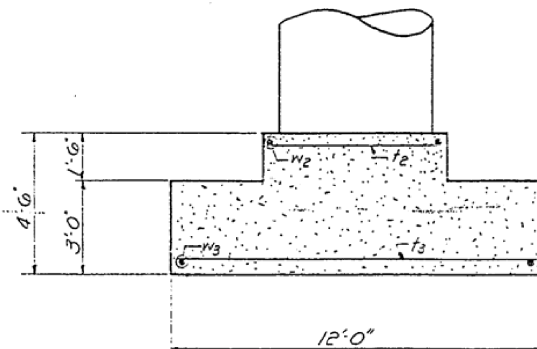


STATE OF ILLINOIS  
DEPARTMENT OF PUBLIC WORKS & BUILDINGS  
DIVISION OF HIGHWAYS

ROUTE NO.	SECTION	COUNTY	TOTAL SHEETS	SHEET NO.	SHEET NO. 15 18 SHEETS
F.A.I. 74	10-4	CHAMPAIGN	34	21	
F.A.I. RT. 74 SEC. 10-4 HB-2		ILLINOIS	FED. AID PROJECT		



FOOTING PLAN

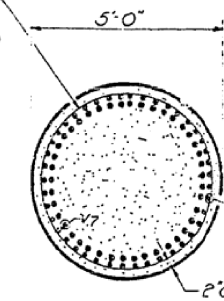
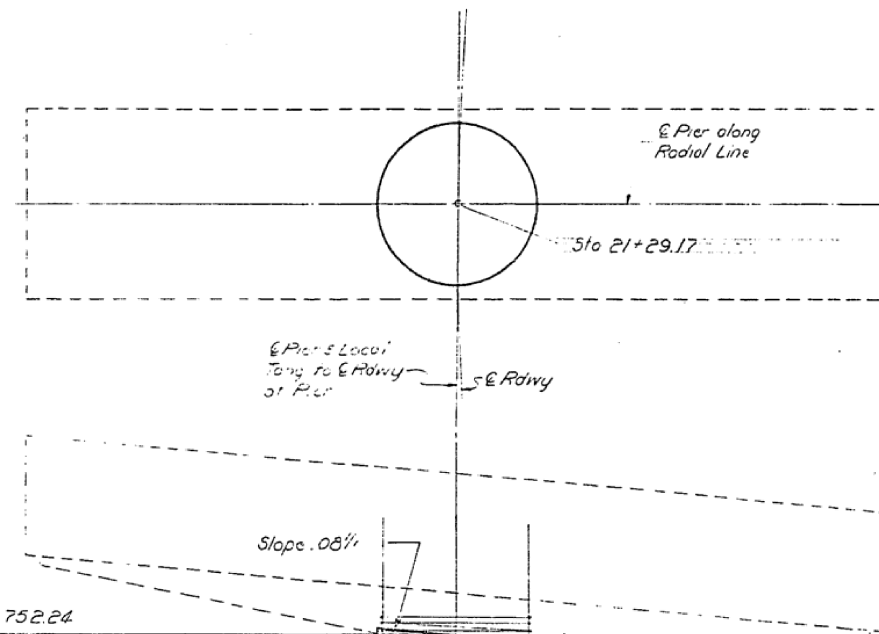


SECTION B-B

Note:  
Construction joints will  
not be permitted in  
footing.

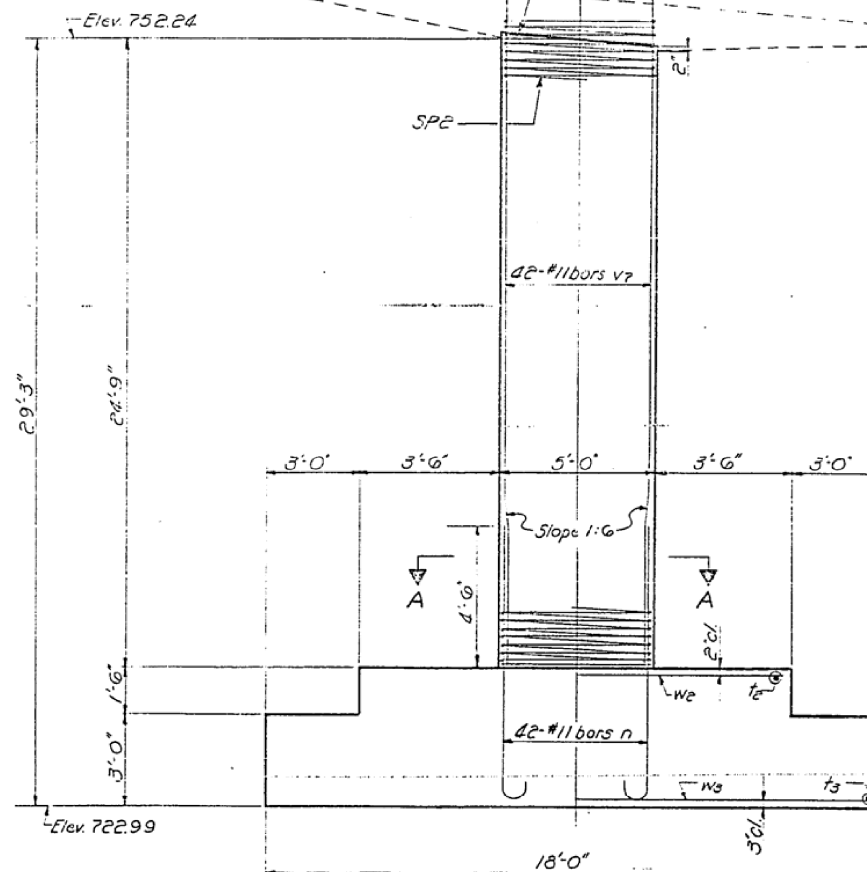
Max. Basic Soil Pressure =  $3.87 \frac{1}{2} \text{ }'$

DESIGNED <i>James M. Pence</i>	EXAMINED <i>Carl Hummel</i>	DATE <i>July 23 1965</i>
CHECKED <i>James Hoxsey</i>	PASSED <i>H.J. Green</i>	
DRAWN <i>H.E. Dickson</i>	APPROVED <i>D.E. Hill</i>	
CHECKED <i>J.W. JNP</i>		

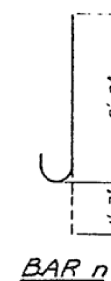


SECTION A-A

$\frac{1}{2}$ " Spiral 3" pitch Two extra turns top & bottom. Extend spiral hooping 4" into pier cap Provide 4-#4 spacers each spiral



ELEVATION



BAR n

BILL OF MATERIAL

Bar	No	Size	Length	Spacers
n	42	#11	10'-4"	
t2	13	#5	5'-9"	
t3	31	#6	11'-9"	
v7	42	#11	29'-6"	
w2	7	#5	11'-9"	
w3	24	#9	17'-9"	
SP2	1	#4	25'-1"	MIN
Class X Concrete				Cu. Yds. 46.0
* Reinforcement Bars				Lbs. 12,130

\* Includes weight of Spiral spacers

PIER 2  
F.A.I. RT. 74 SEC. 10-4 HB-2  
CHAMPAIGN COUNTY  
STA. 1547 + 92.48