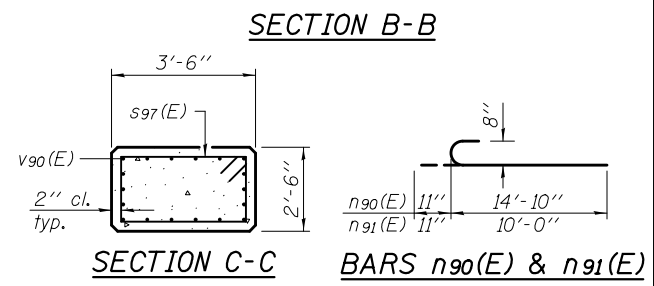
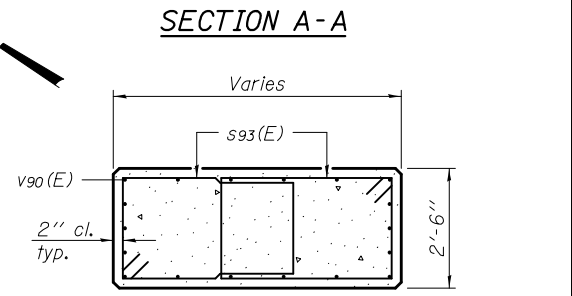
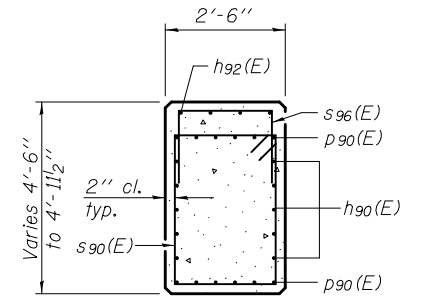
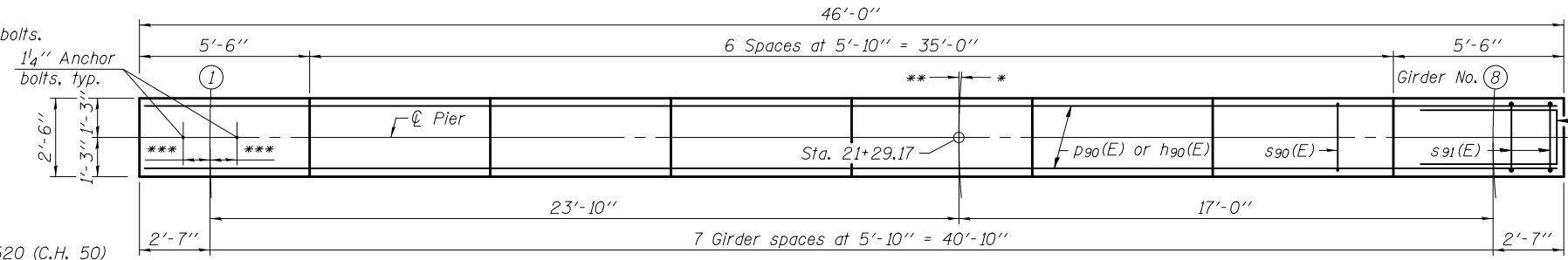
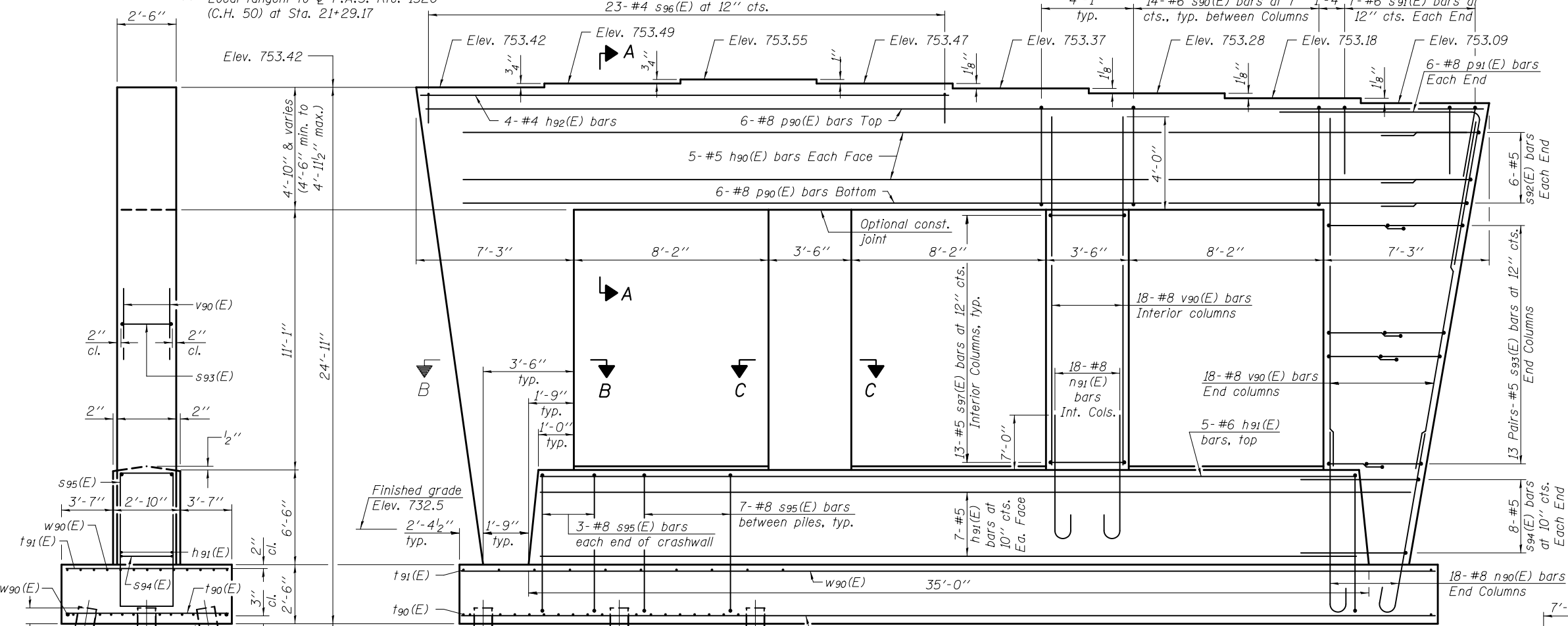


Notes:
 Space reinforcement in cap to miss anchor bolts.
 Pour steps monolithically with cap.
 For details of piles, see sheet 58 of 62.

PILE DATA
 Type: Metal shell, 14" x 0.250"
 with pile shoes
 Nominal Required Bearing: 367 k
 Factored Resistance Available: 202 k
 Est. Length: 29 ft.
 No. Production Piles: 23
 No. Test Piles: 1



** Local tangent to C.F.A.S. Rte. 1520 (C.H. 50) at Sta. 21+29.17
 *** 10 1/2", typ.

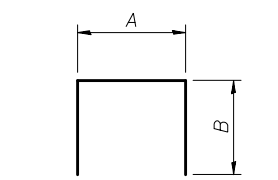


BILL OF MATERIAL

Bar	No.	Size	Length	Shape
h90(E)	10	#5	42'-6"	—
h91(E)	19	#5	33'-3"	—
h92(E)	4	#4	22'-8"	—
n90(E)	36	#8	15'-9"	U
n91(E)	36	#8	10'-11"	U
p90(E)	12	#8	44'-0"	—
p91(E)	12	#8	15'-4"	7
s90(E)	42	#6	14'-0"	□
s91(E)	14	#6	9'-10"	□
s92(E)	12	#5	11'-6"	□
s93(E)	52	#5	12'-9"	□
s94(E)	16	#5	15'-4"	□
s95(E)	41	#8	23'-2"	□
s96(E)	23	#4	6'-2"	□
s97(E)	26	#5	11'-7"	□
t90(E)	67	#8	9'-8"	—
t91(E)	44	#5	9'-8"	—
v90(E)	72	#8	16'-0"	—
w90(E)	23	#5	42'-11"	—

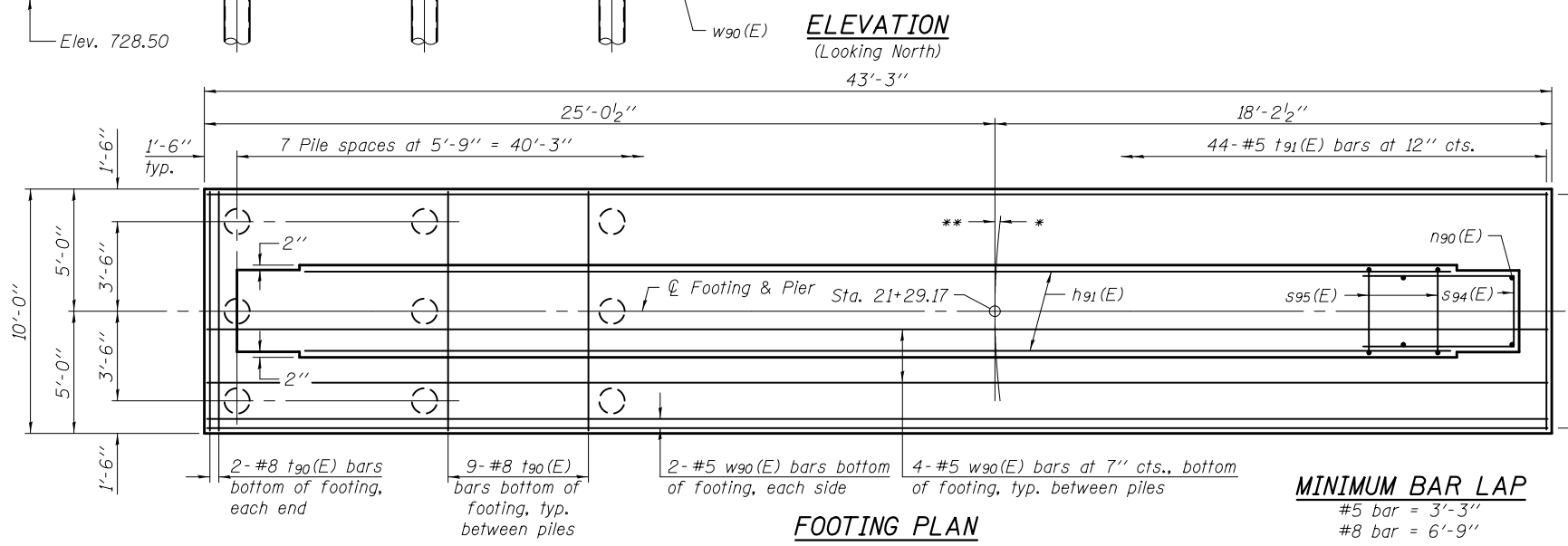
Structure Excavation	Cu. Yd.	110.0
Concrete Structures	Cu. Yd.	105.1
Reinforcement Bars, Epoxy Coated	Pound	17,030
Furnishing Metal Shell Piles, 14" x 0.250"	Foot	667
Driving Piles	Foot	667
Test Pile, Metal Shells	Each	1
Pile Shoes	Each	24

END VIEW



BARS A & B DIMENSIONS

Bar	A	B
s91(E)	2'-2"	3'-10"
s92(E)	2'-0"	4'-9"
s94(E)	2'-2"	6'-7"
s96(E)	2'-2"	2'-0"



MINIMUM BAR LAP
 #5 bar = 3'-3"
 #8 bar = 6'-9"

BARS s90(E), s93(E), s95(E) & s97(E)

DESIGNED - DEWEY H. COULTAS
 CHECKED - NICHOLAS R. BARNETT
 DRAWN - MICHAEL B. MOSSMAN
 CHECKED - D.H.C. / N.R.B.

EXAMINED
 PASSED
 ACTING ENGINEER OF BRIDGES AND STRUCTURES

DATE - FEBRUARY 25, 2013
 REVISED

STATE OF ILLINOIS
 DEPARTMENT OF TRANSPORTATION

PIER
 STRUCTURE NO. 010 - 0289

SHEET NO. 57 OF 62 SHEETS

F.A.I. R.T.E. SECTION COUNTY TOTAL SHEETS SHEET NO.
 74 10-4BR CHAMPAIGN 290 142
 CONTRACT NO. 70700
 ILLINOIS FED. AID PROJECT