

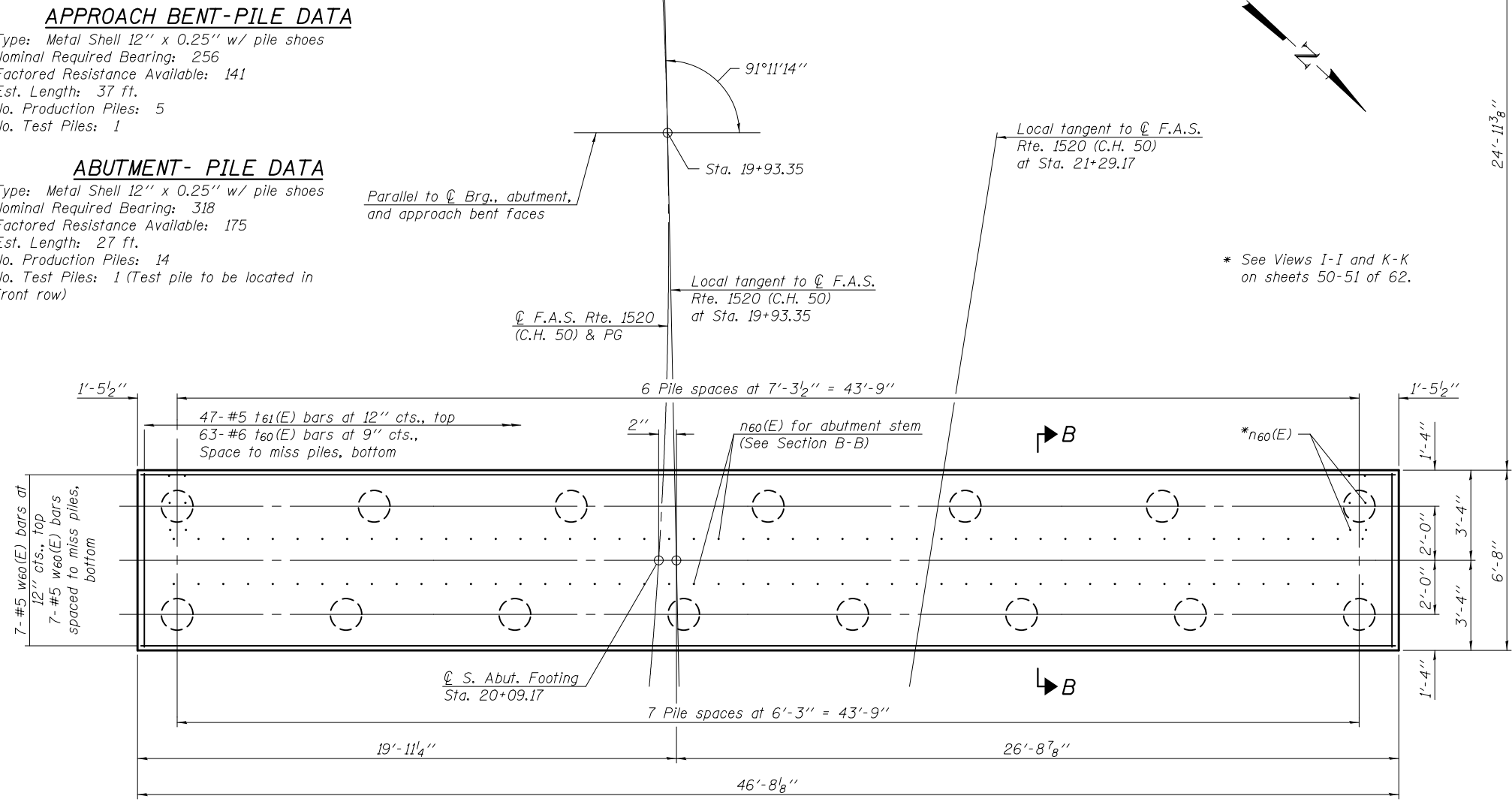
APPROACH BENT-PILE DATA

Type: Metal Shell 12" x 0.25" w/ pile shoes
 Nominal Required Bearing: 256
 Factored Resistance Available: 141
 Est. Length: 37 ft.
 No. Production Piles: 5
 No. Test Piles: 1

ABUTMENT- PILE DATA

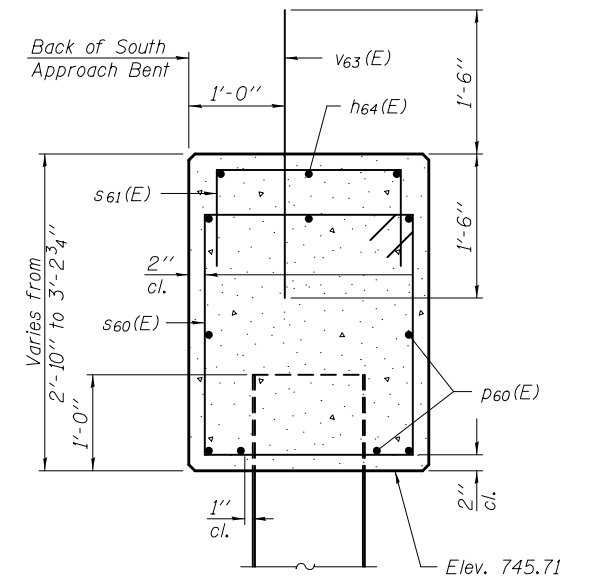
Type: Metal Shell 12" x 0.25" w/ pile shoes
 Nominal Required Bearing: 318
 Factored Resistance Available: 175
 Est. Length: 27 ft.
 No. Production Piles: 14
 No. Test Piles: 1 (Test pile to be located in front row)

Parallel to C. Brg., abutment, and approach bent faces

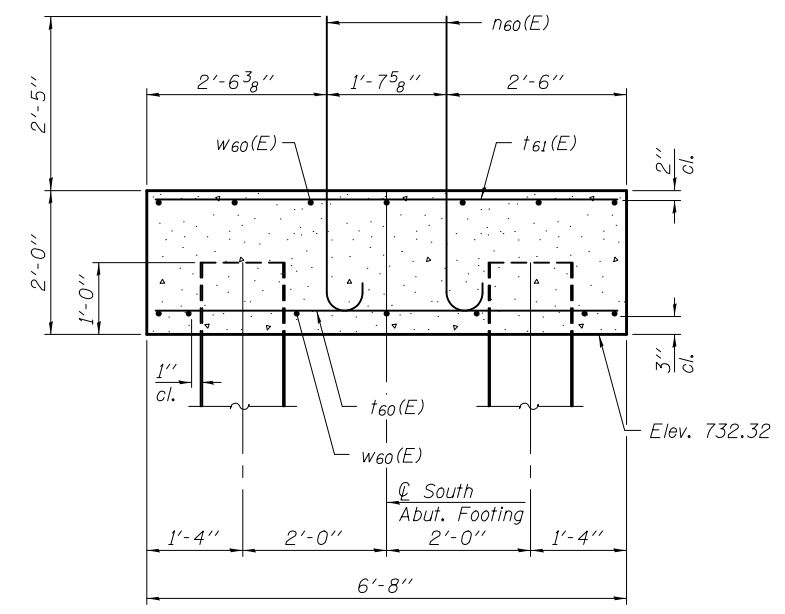


FOOTING PLAN

Notes:
 Space reinforcement in cap to miss anchor bolts. Pour steps monolithically with cap.
 For details of piles, see sheet 58 of 62.
 For details of reinforcement and Bill of Material, see sheet 51 of 62.
 The abutments shall have all exposed surfaces of backwalls, bridge seats, front and side faces, and curtain walls treated with Concrete Sealer.
 See sheet 3 of 62 for offsets to local tangent at Sta. 21+29.27.



SECTION A-A



SECTION B-B

Note:
 Space proposed piles at south abutment to miss existing piles by as much distance as practical, but not less than 9" clear distance.

DESIGNED - NICHOLAS R. BARNETT	EXAMINED - <i>James F. Schaff</i> ACTING ENGINEER OF BRIDGE DESIGN	DATE - FEBRUARY 25, 2013	STATE OF ILLINOIS DEPARTMENT OF TRANSPORTATION	SOUTH ABUTMENT STRUCTURE NO. 010 - 0289	F.A.I. RTE. 74	SECTION 10-4BR	COUNTY CHAMPAIGN	TOTAL SHEETS 290	SHEET NO. 132	
CHECKED - DEWEY H. COULTAS	PASSED - <i>Carl Perry</i> ACTING ENGINEER OF BRIDGES AND STRUCTURES	REVISED			CONTRACT NO. 70700			ILLINOIS FED. AID PROJECT		
DRAWN - MICHAEL B. MOSSMAN		REVISED			SHEET NO. 47 OF 62 SHEETS					
CHECKED - D.H.C. / N.R.B.					ILLINOIS FED. AID PROJECT					