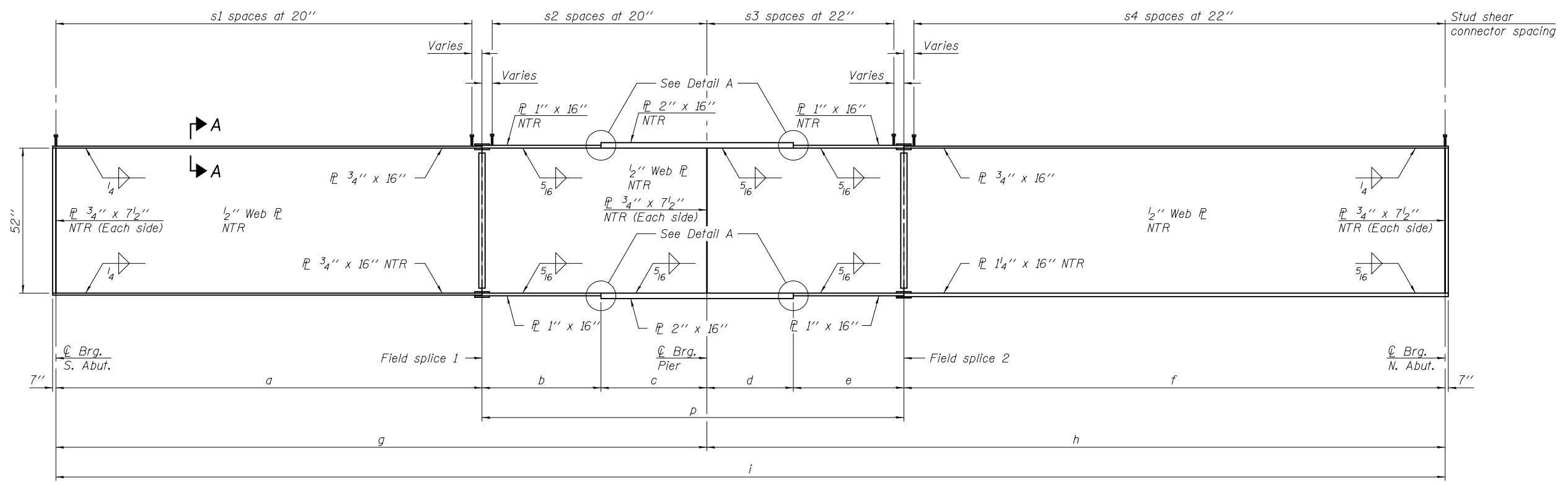


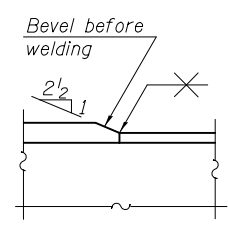
FRAMING PLAN



GIRDER ELEVATION

Load carrying components designated "NTR" shall conform to the Impact Testing Requirement, Zone 2.

Note:
See sheets 39 thru 41 of 62 for structural steel details, notes, and tables.
All cross frames or diaphragms between beams or girders shall be installed with erection pins and bolts in accordance with the erection plan approved by the Engineer. Individual cross frames or diaphragms at supports may be temporarily disconnected to install bearing anchor rods.



DETAIL A

DESIGNED - DEWEY H. COULTAS	EXAMINED - <i>Joanne F. Joffe</i> ACTING ENGINEER OF BRIDGE DESIGN	DATE - FEBRUARY 25, 2013	STATE OF ILLINOIS DEPARTMENT OF TRANSPORTATION	STRUCTURAL STEEL STRUCTURE NO. 010 - 0289	F.A.I. RTE.	SECTION	COUNTY	TOTAL SHEETS	SHEET NO.	
CHECKED - NICHOLAS R. BARNETT	PASSED - <i>Carl Perry</i> ACTING ENGINEER OF BRIDGES AND STRUCTURES	REVISED			74	10-4BR	CHAMPAIGN	290	123	
DRAWN - MICHAEL B. MOSSMAN		REVISED			CONTRACT NO. 70700					
CHECKED - D.H.C. / N.R.B.					SHEET NO. 38 OF 62 SHEETS					