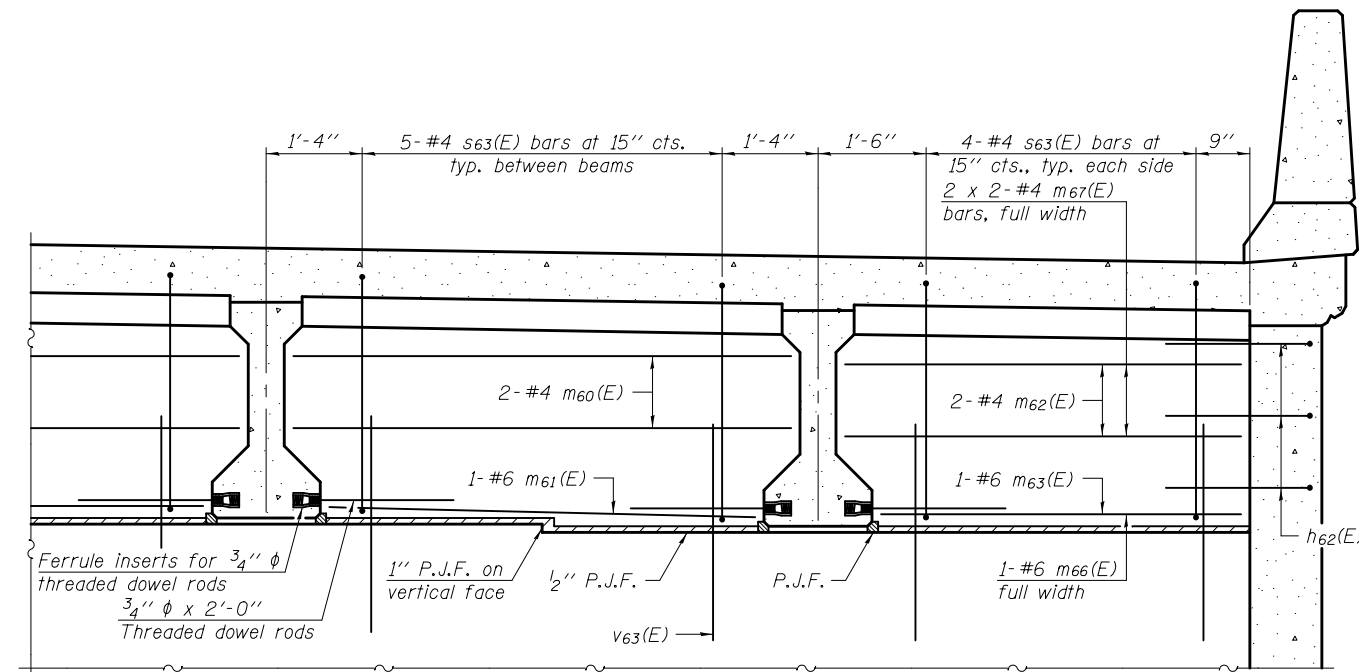


DIAPHRAGM AT APPROACH BENT

For location of m60(E) thru m65(E) bars see Section B-B.

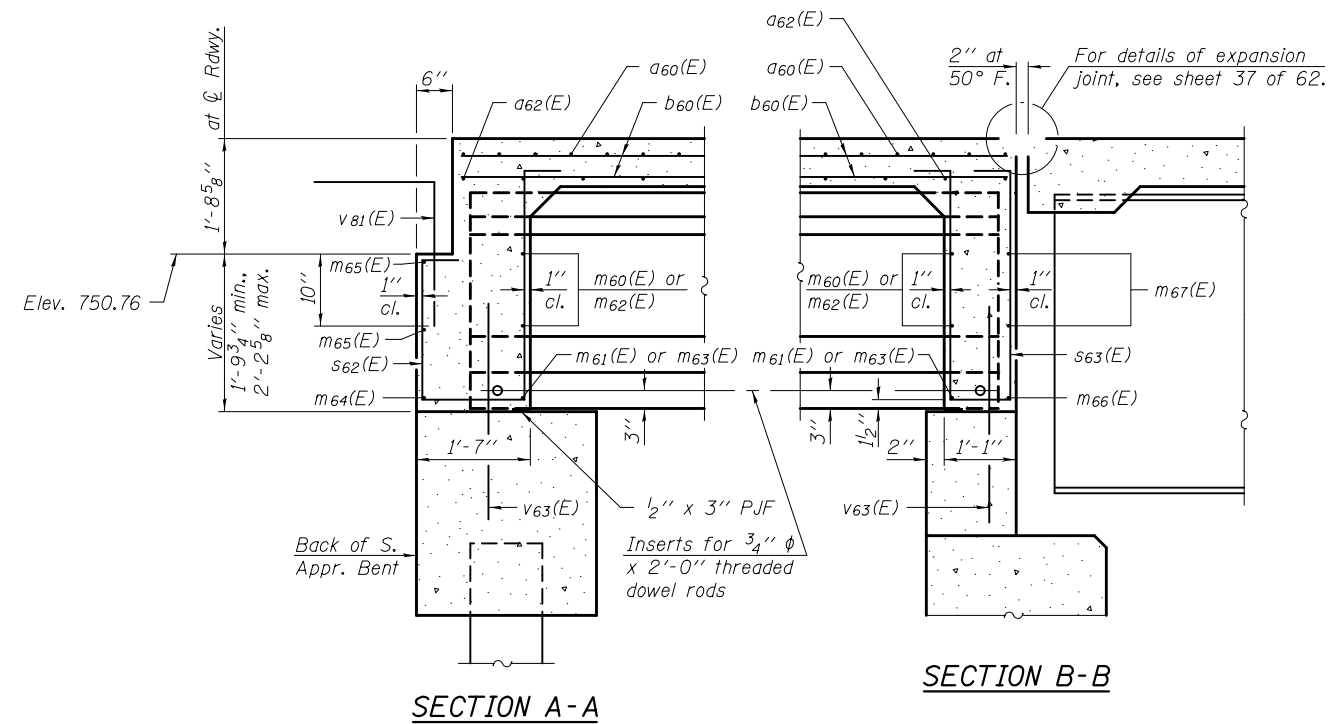


DIAPHRAGM AT ABUTMENT

For location of m60(E) thru m63(E), m66(E), and m67(E) bars, see Section A-A.

MINIMUM BAR LAP

#4 bar = 2'-7"

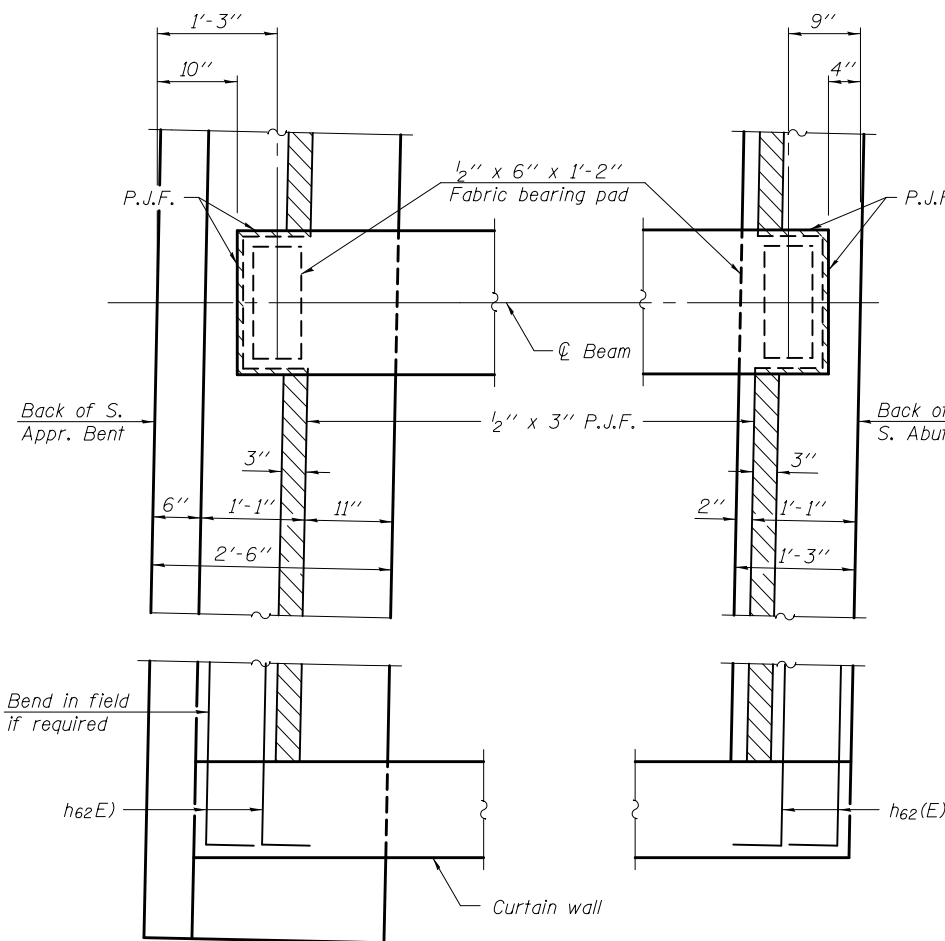


SECTION A-A

SECTION B-B

**SOUTH APPROACH SPAN
BILL OF MATERIAL**

Bar	No.	Size	Length	Shape
a60(E)	64	#5	45'-7"	—
a61(E)	128	#6	6'-6"	—
a62(E)	40	#5	45'-5"	—
b60(E)	94	#5	29'-1"	—
d60(E)	30	#4	4'-1"	L
d61(E)	30	#6	3'-8"	L
d62(E)	16	#4	2'-1"	n
d63(E)	33	#5	7'-11"	Δ
d64(E)	33	#5	7'-2"	Δ
d65(E)	33	#5	6'-8"	Δ
d66(E)	33	#5	6'-10"	Δ
e60(E)	40	#4	14'-4"	—
e61(E)	2	#4	29'-0"	—
e62(E)	2	#8	29'-0"	—
m60(E)	16	#4	6'-10"	—
m61(E)	8	#6	5'-10"	—
m62(E)	8	#4	5'-5"	—
m63(E)	4	#6	4'-11"	—
m64(E)	1	#6	45'-11"	—
m65(E)	4	#4	24'-3"	—
m66(E)	1	#6	42'-4"	—
m67(E)	4	#4	22'-6"	—
s62(E)	28	#4	7'-1"	U
s63(E)	28	#4	8'-7"	U
v81(E)	47	#5	4'-2"	└
Reinforcement Bars, Epoxy Coated			Pound	11,820
Concrete Superstructure			Cu. Yd.	56.0



PARTIAL PLAN

Note:
See sheets 47 thru 51 of 62 for h62(E) and v63(E) bars.
Bars indicated thus 2 x 2-#4 etc. indicates 2 lines of bars with 2 lengths per line.

DESIGNED - NICHOLAS R. BARNETT	EXAMINED - <i>James F. J...</i>	DATE - FEBRUARY 25, 2013
CHECKED - DEWEY H. COULTAS	PASSED - <i>Carl...</i>	REVISIONS
DRAWN - MICHAEL B. MOSSMAN	ACTING ENGINEER OF BRIDGES AND STRUCTURES	REVISIONS
CHECKED - D.H.C. / N.R.B.		

STATE OF ILLINOIS
DEPARTMENT OF TRANSPORTATION

SOUTH VAULTED ABUTMENT APPROACH SPAN DETAILS
STRUCTURE NO. 010 - 0289

SHEET NO. 24 OF 62 SHEETS

F.A.I. RTE.	SECTION	COUNTY	TOTAL SHEETS	SHEET NO.
74	10-4BR	CHAMPAIGN	290	109
			CONTRACT NO.	70700
ILLINOIS FED. AID PROJECT				