

DETAIL NOTES

Drawings are not to scale.

Shoulder Widening for Type 1 (Special) Terminals shall be constructed prior to construction of new guardrail. See Standard 630301-05 for Details.

Shoulder Widening shall be seeded with Class 2 and Class 7 Seed after completion.

* GUARDRAIL MARKERS

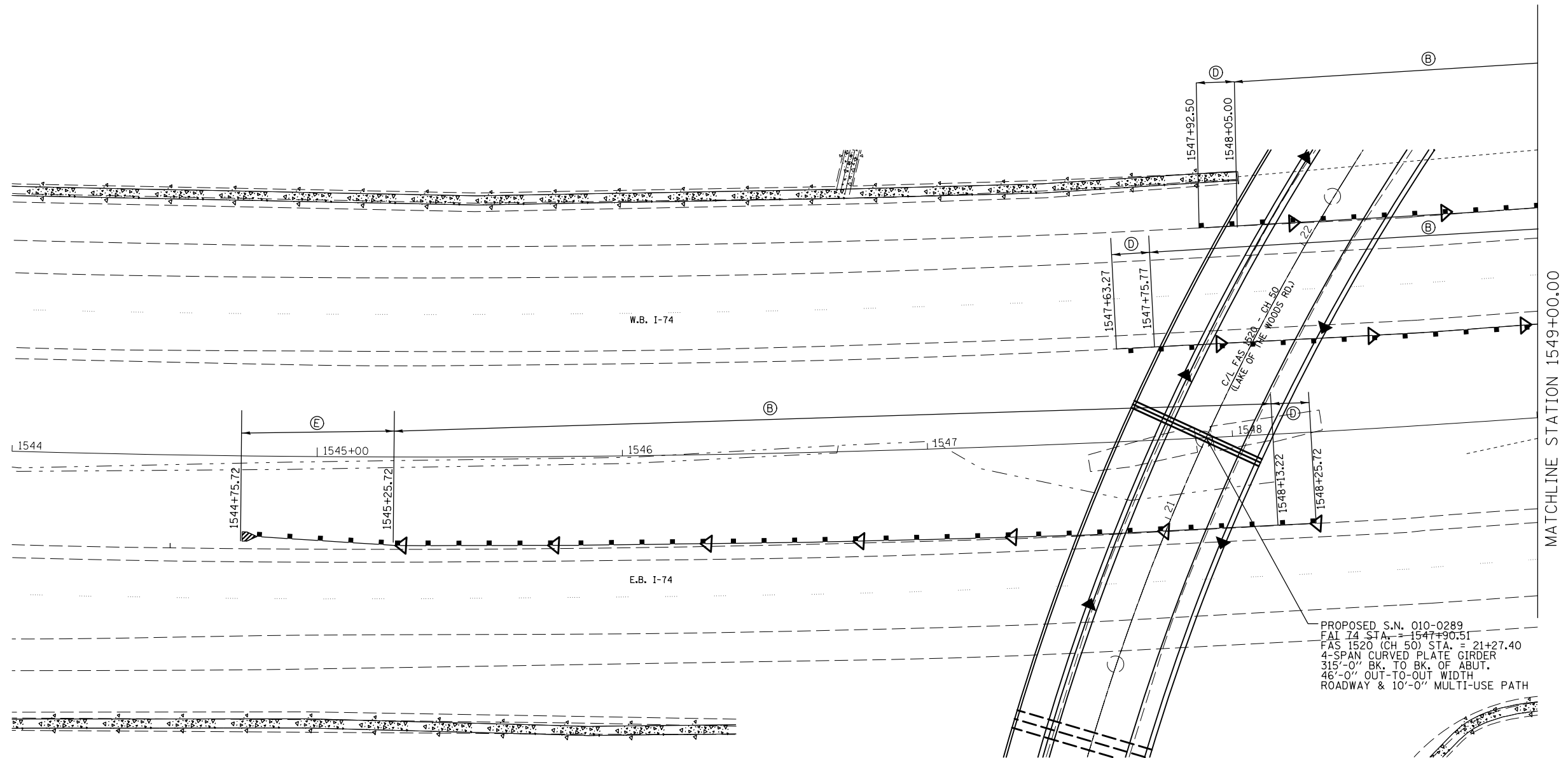
◁ GUARDRAIL MARKERS

◄ BARRIER WALL MARKERS

▽ TERMINAL MARKER DA

* SEE STD(S): 635006-03
635011-02

- (A) TRAFFIC BARRIER TERMINAL, TYPE 1 (SPECIAL) TANGENT
- (B) STEEL PLATE BEAM GUARDRAIL, TYPE A 6 FT POST
- (C) TRAFFIC BARRIER TERMINAL, TYPE 6
- (D) TRAFFIC BARRIER TERMINAL, TYPE 2
- (E) TRAFFIC BARRIER TERMINAL, TYPE 1 (SPECIAL) FLARED



PROPOSED S.N. 010-0289
 FAS 74 STA. = 1547+90.51
 FAS 1520 (CH 50) STA. = 21+27.40
 4-SPAN CURVED PLATE GIRDER
 315'-0" BK. TO BK. OF ABUT.
 46'-0" OUT-TO-OUT WIDTH
 ROADWAY & 10'-0" MULTI-USE PATH



| | | | |
|---|-----------------------------|--------------|-----------|
| FILE NAME = | USER NAME = ceorlockbm | DESIGNED BMC | REVISED - |
| ei:\pw\work\p\idot\ceorlockbm\d0208368\0570700-sht-g-rail.dgn | | DRAWN BMC | REVISED - |
| | PLOT SCALE = 40.0000' / in. | CHECKED - | REVISED - |
| | PLOT DATE = 11/9/2012 | DATE 5-3-12 | REVISED - |

STATE OF ILLINOIS
DEPARTMENT OF TRANSPORTATION

GUARDRAIL DETAILS

SCALE: N/A SHEET NO. 3 OF 4 SHEETS STA. 11+00.00 TO STA. 23+00.00

| | | | | |
|--------------------|---------|-----------|---------------------------|-----------|
| F.A.I. RTE. | SECTION | COUNTY | TOTAL SHEETS | SHEET NO. |
| 74 | 10-4BR | CHAMPAIGN | 290 | 80 |
| CONTRACT NO. 70700 | | | ILLINOIS FED. AID PROJECT | |