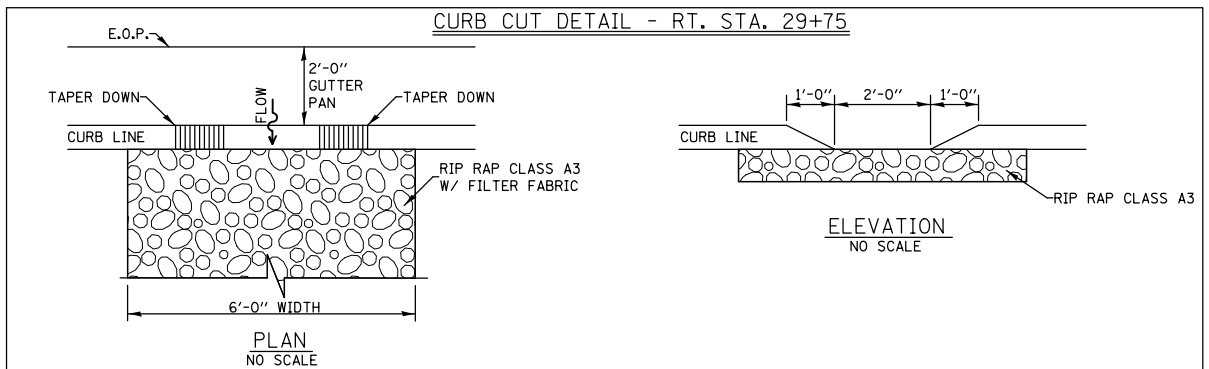
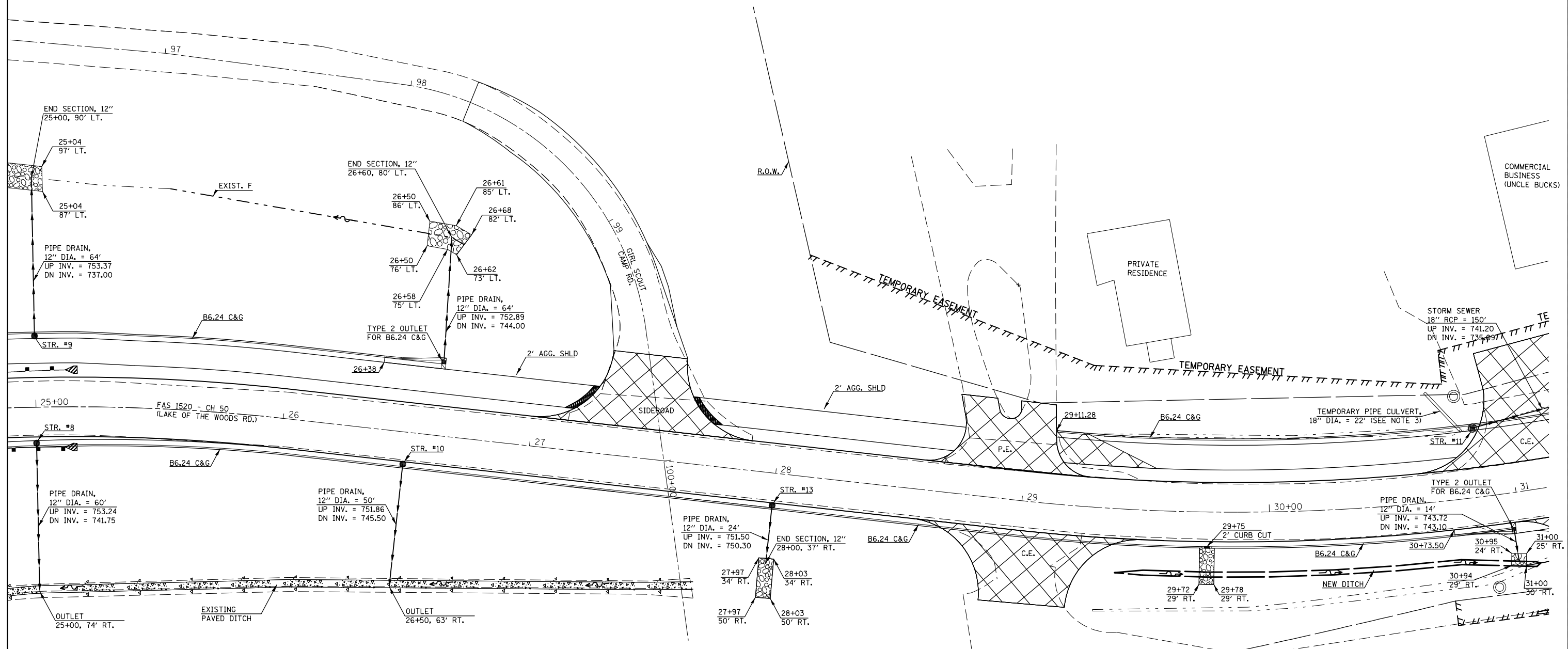


STRUCTURE TABLE (STORM SEWERS AND INLETS)										
STR. #	O/S	STA.	STR. TYPE	FRAME & GRATE	FRAME & LID	ROAD C/L ELEV.	RIM ELEV.(F/L GUTTER)	TOP OF MASONRY ELEV.	F/L IN	F/L OUT
8	RT. 14.49'	25+00	INLET TYPE A	TYPE 20	-	757.21	756.89	756.14	-	753.24
9	LT. 28.75'	25+00	INLET TYPE A	TYPE 20	-	757.21	757.02	756.27	-	753.37
10	RT. 13.00'	26+50	INLET TYPE A	TYPE 20	-	755.81	755.51	754.75	-	751.86
11	LT. 28.00'	30+85	INLET TYPE B	TYPE 20	-	746.48	745.68	744.93	-	741.20
13	RT. 13.00'	28+00	INLET TYPE A	TYPE 20	-	754.40	754.10	753.35	-	750.30

NOTE: O/S ARE FROM CH 50 ALIGNMENT TO CENTER OF STRUCTURE.



- DETAIL NOTES:
- SEE STANDARD 606006-02 FOR B6.24 CURB AND GUTTER OUTLETS.
  - LOCATIONS AND DIMENSIONS FOR STONE RIP RAP, CLASS A3 MAY VARY AND BE ADJUSTED IN THE FIELD BY THE ENGINEER.
  - TEMPORARY PIPE CULVERTS SHALL BE INSTALLED DURING CONSTRUCTION OF TEMPORARY ACCESS ROADWAY PHASE II AND SHALL BE REMOVED WHEN TEMPORARY ACCESS ROADWAY PHASE II IS REMOVED. SEE TEMPORARY ACCESS ROADWAY PHASE I, II, & III DETAILS FOR ADDITIONAL INFORMATION.

FILE NAME =	USER NAME = ceorlockbm	DESIGNED BMC	REVISED -
ce:\pwwork\pwwork\ceorlockbm\d0208368\0570700-sht-drain.dgn		DRAWN BMC	REVISED -
	PLOT SCALE = 40.0000' / in.	CHECKED -	REVISED -
	PLOT DATE = 11/9/2012	DATE 5-2-12	REVISED -

**STATE OF ILLINOIS  
DEPARTMENT OF TRANSPORTATION**

<b>DRAINAGE PLAN DETAILS</b>		
<b>CH 50 - LAKE OF THE WOODS RD.</b>		
SCALE: N/A	SHEET NO. 3 OF 4 SHEETS	STA. ----- TO STA. -----

F.A.I. RTE.	SECTION	COUNTY	TOTAL SHEETS	SHEET NO.
74	10-4BR	CHAMPAIGN	290	67
CONTRACT NO. 70700			ILLINOIS FED. AID PROJECT	