

POINT #	DESCRIPTION	G. S. STA.	G. S. O/S	CH 50 STA.	CH 50 O/S
1	G. S. ALIGNMENT PI LOCATION	97+00.00	0.00'	25+46.39	-143.4391'
2	G. S. ALIGNMENT CURVE #1 PC LOCATION	97+95.83	0.00'	26+32.13	-139.3393'
3	BEG. ROAD WORK - G. S. RD.	98+25.00	0.00'	26+60.91	-135.1003'
4	G. S. ALIGNMENT CURVE #1 PI LOCATION	98+83.58	-	27+19.87	-137.6516'
5	G. S. ALIGNMENT CURVE #1 PT LOCATION	99+45.69	0.00'	27+41.30	-52.5564'
6	INTERSECTION OF G. S. AND CH 50 ALIGNMENTS	99+99.89	0.00'	27+54.53	-0.0000'

G. S. = GIRL SCOUT CAMP RD. ALIGNMENT  
CH 50 = COUNTY HIGHWAY 50 ALIGNMENT

\* O/S DISTANCES ARE FROM EACH ROADWAY ALIGNMENT.

NOTE:  
GIRL SCOUT CAMP ALIGNMENT DOES NOT FOLLOW EXISTING ROADWAY C/L FROM STATION 97+00 TO STA. 98+00.

DATE	
BY	
SURVEYED	
PLOTTED	
ALIGNED	
CHECKED	
NO. 1	
NO. 2	
NO. 3	
NO. 4	
NO. 5	
NO. 6	
NO. 7	
NO. 8	
NO. 9	
NO. 10	

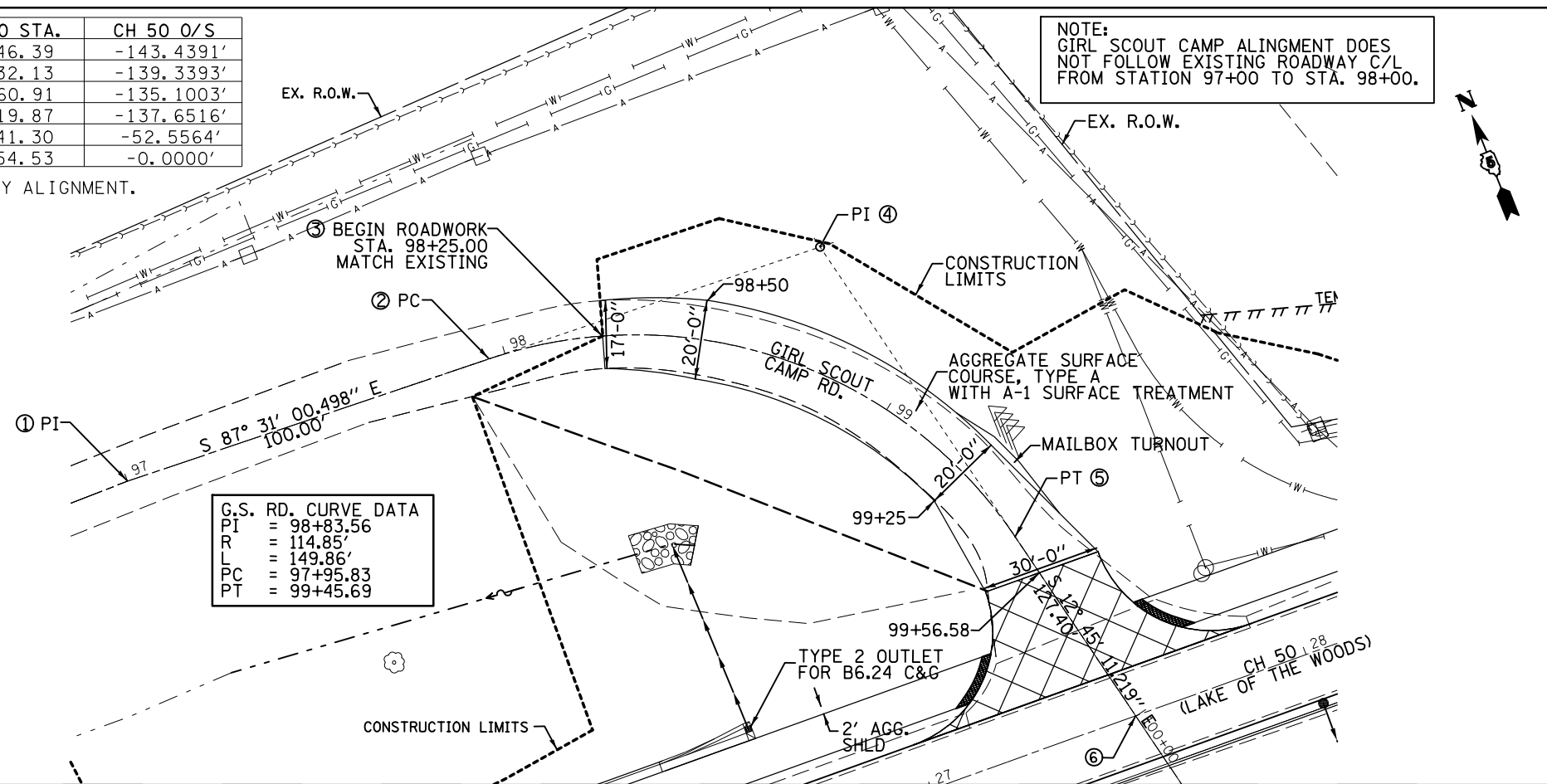
40300305 POLYMERIZED BITUMINOUS MATERIALS (COVER AND SEAL COAT)  
GIRL SCOUT CAMP RD.

STATION TO STATION	LENGTH (FT.)	WIDTH (FT.)	AREA (SQ. YD.)	HFP (GALLONS)
98+25	99+57	132.0	20.0	293.3
PROJECT TOTAL =				102.7
USE =				103.0

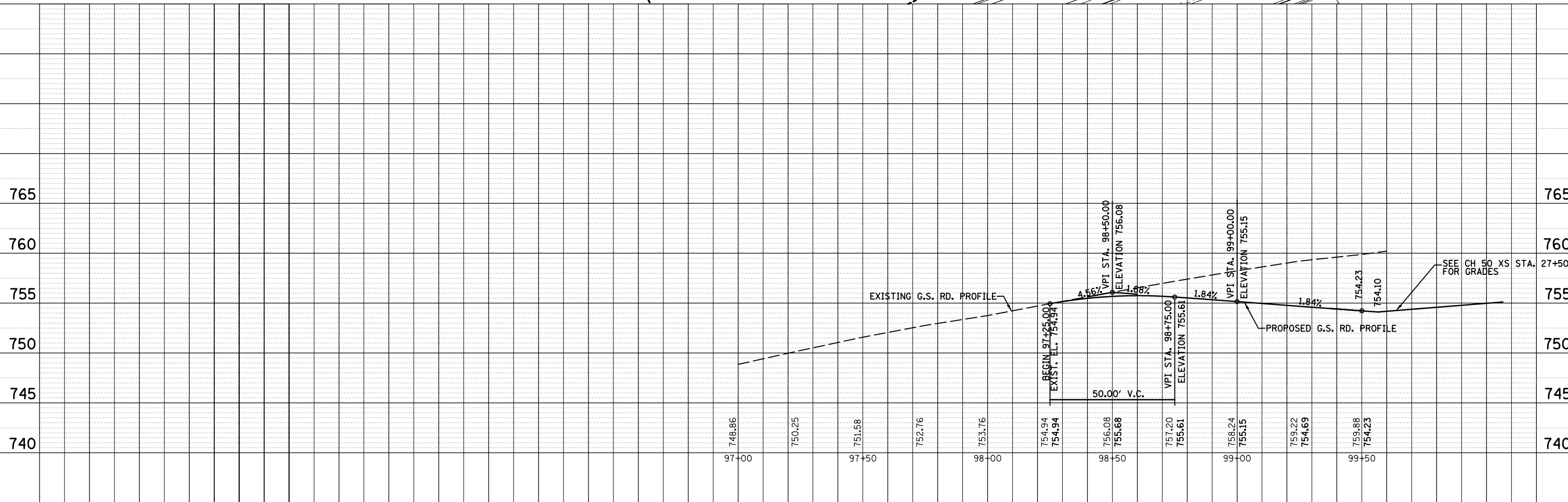
40300600 SEAL COAT AGGREGATE  
GIRL SCOUT CAMP RD.

STATION TO STATION	LENGTH (FT.)	WIDTH (FT.)	AREA (SQ. YD.)	CA-16 (TONS)
98+25	99+57	132.0	20.0	293.3
PROJECT TOTAL =				2.8
USE =				3.0

 = PCC DRIVEWAY PAVEMENT, 8"



DATE	
BY	
SURVEYED	
PLOTTED	
GRADES CHECKED	
STRUCTURE NOTATIONS CHECKED	
NO. 1	
NO. 2	
NO. 3	
NO. 4	
NO. 5	
NO. 6	
NO. 7	
NO. 8	
NO. 9	
NO. 10	



FILE NAME =	USER NAME = ceorlockbm	DESIGNEDBMC	REVISED -
c:\pwork\pwork\ceorlockbm\d0208368\050700-sht-plnprf-Girl Scout Rd.dgn		DRAWN BMC	REVISED -
PLOT SCALE = 40.0000' / in.		CHECKED -	REVISED -
PLOT DATE = 11/9/2012		DATE 04-25-12	REVISED -

STATE OF ILLINOIS  
DEPARTMENT OF TRANSPORTATION

PLAN AND PROFILE  
GIRL SCOUT CAMP RD.

SCALE: SHEET 01 OF 01 SHEETS STA. 97+00.00 TO STA. 99+50.00

F.A.I. RTE.	SECTION	COUNTY	TOTAL SHEETS	SHEET NO.
74	10-4BR	CHAMPAIGN	290	44
CONTRACT NO. 70700			ILLINOIS FED. AID PROJECT	