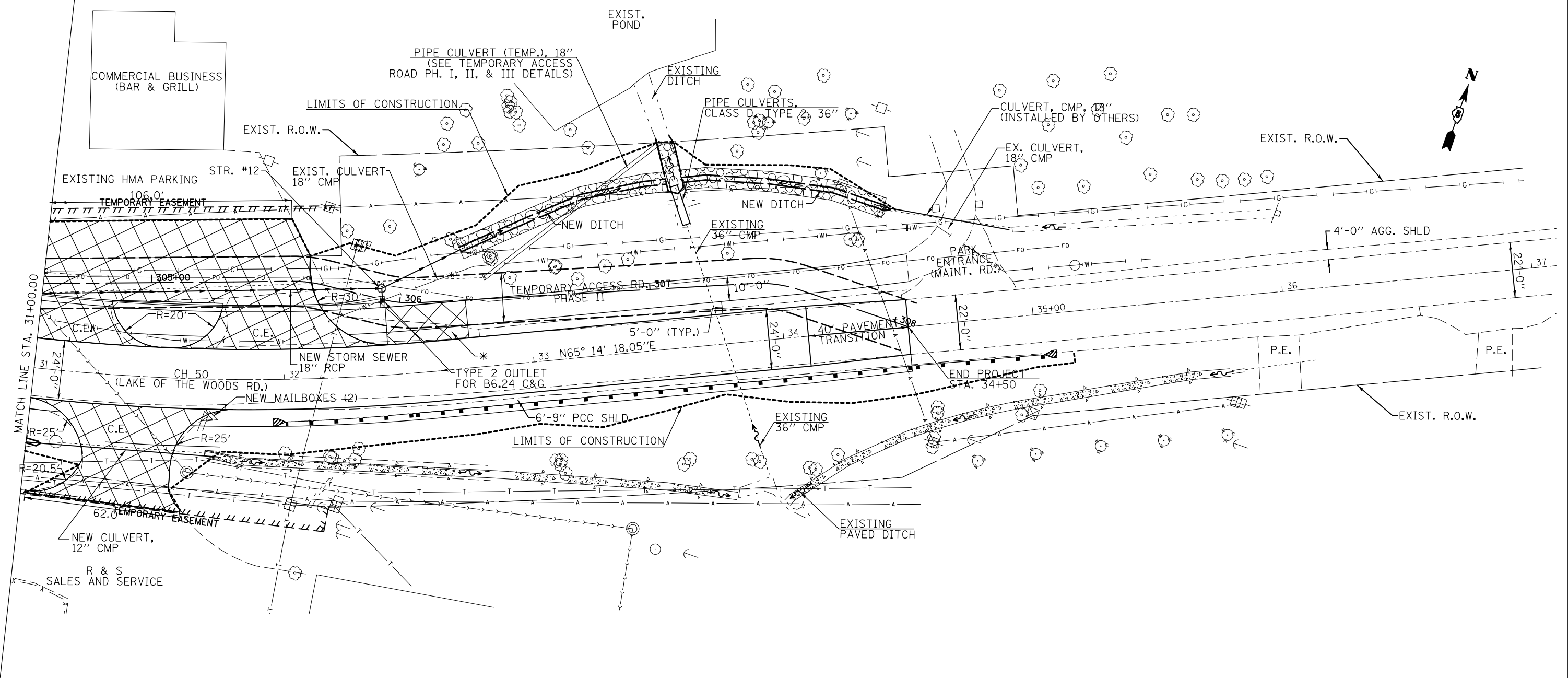



SEC14, T.20N, R.7E. OF 3RD P.M.

CH 50 C/L
 CURVE DATA:
 PI = 30+83.08
 R = 801.12'
 L = 365.53'
 PC = 28+97.07
 PT = 32+62.61



ENTRANCE OR SIDEROAD	RAD. LENGTH	RAD. PT. STATION	RAD. PT. O/S
COMMERCIAL ENTRANCE (RV NORTH)	25.0'	30+98.36	37.0' RT.
COMMERCIAL ENTRANCE (RV NORTH)	20.5'	31+03.12	28.5' RT.
COMMERCIAL ENTRANCE (RV NORTH)	25.0'	31+79.64	37.0' RT.
COMMERCIAL ENTRANCE (UNCLE BUCKS)	30.0'	30+60.66	42.0' LT.
COMMERCIAL ENTRANCE (UNCLE BUCKS)	20.0'	31+49.90	32.0' LT.
COMMERCIAL ENTRANCE (UNCLE BUCKS)	20.0'	31+54.42	32.0' LT.
COMMERCIAL ENTRANCE (UNCLE BUCKS)	30.0'	32.43.55	42.0' LT.

* USE PRIVATE ENTRANCE CONCRETE SECTION IN THIS AREA FOR PARK MAINTENANCE ROAD ACCESS (SEE DISTRICT 5 DETAIL 42300AAA FOR REQUIRED PCCP THICKNESS).

 = PCC DRIVEWAY PAVEMENT (THICKNESS VARIES SEE SCHEDULES)