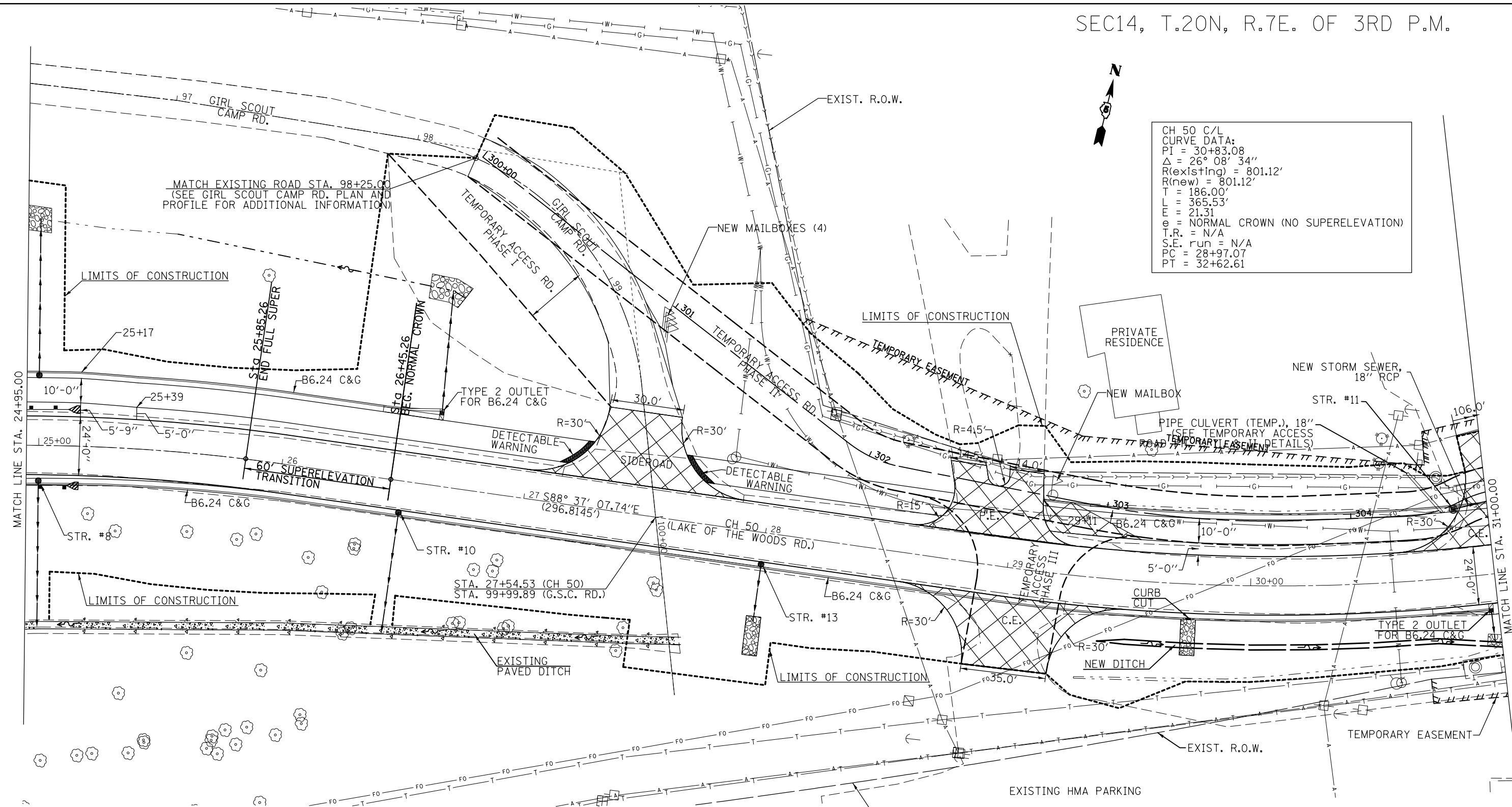




CH 50 C/L  
 CURVE DATA:  
 PI = 30+83.08  
 $\Delta = 26^\circ 08' 34''$   
 R(existing) = 801.12'  
 R(new) = 801.12'  
 T = 186.00'  
 L = 365.53'  
 E = 21.31  
 e = NORMAL CROWN (NO SUPERELEVATION)  
 T.R. = N/A  
 S.E. run = N/A  
 PC = 28+97.07  
 PT = 32+62.61



ENTRANCE OR SIDEROAD	RAD. LENGTH	RAD. PT. STATION	RAD. PT. O/S
SIDEROAD -G. S. C. RD.	30.0'	26+99.64	42.0' LT.
SIDEROAD -G. S. C. RD.	30.0'	27+89.64	42.0' LT.
PRIVATE ENTRANCE	15.0'	28+59.33	27.0' LT.
PRIVATE ENTRANCE	4.5'	28+91.37	37.0' LT.
PRIVATE ENTRANCE	15.0'	29+27.14	27.0' LT.
COMMERCIAL ENTRANCE (RV SOUTH)	30.0'	28+56.79	42.0' RT.
COMMERCIAL ENTRANCE (RV SOUTH)	30.0'	29+49.09	42.0' RT.
COMMERCIAL ENTRANCE (UNCLE BUCKS)	30.0'	30+60.66	42.0' LT.

CH 50 C/L  
 CURVE DATA:  
 PI = 23+04.98  
 $\Delta = 47^\circ 10' 49''$   
 R(existing) = 763.44'  
 R(new) = 763.44'  
 T = 333.38'  
 L = 628.66'  
 E = 69.62  
 e = 1.50%  
 T.R. = 30'  
 S.E. run = 30'  
 PC = 19+71.60  
 PT = 26+00.26

= PCC DRIVEWAY PAVEMENT (THICKNESS VARIES, SEE SCHEDULES)