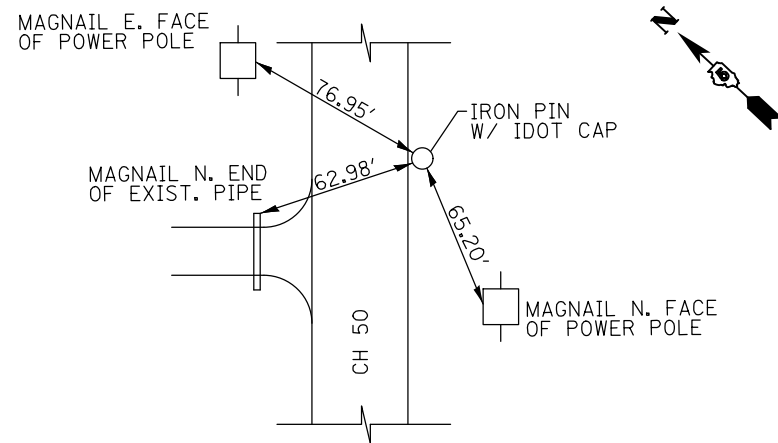
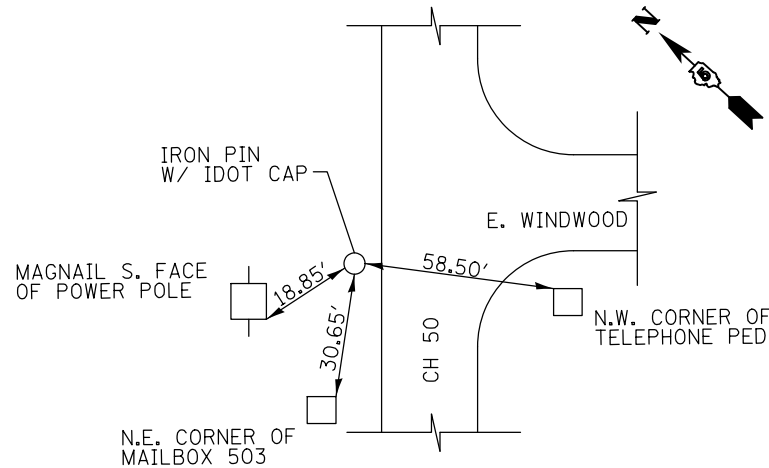


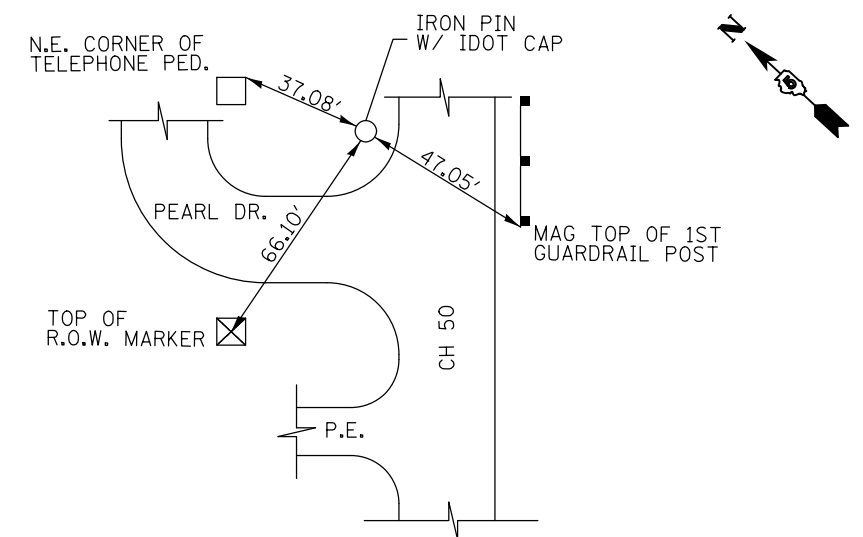
T.S. #498



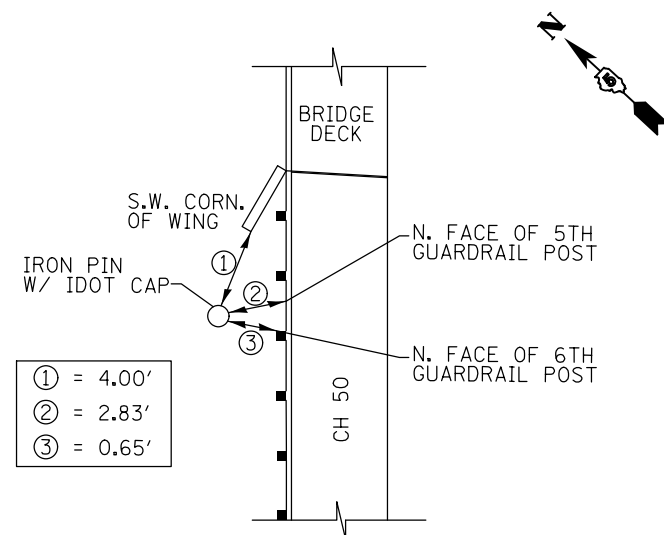
T.S. #499, STA. 10+01.13, 18.62' LT.



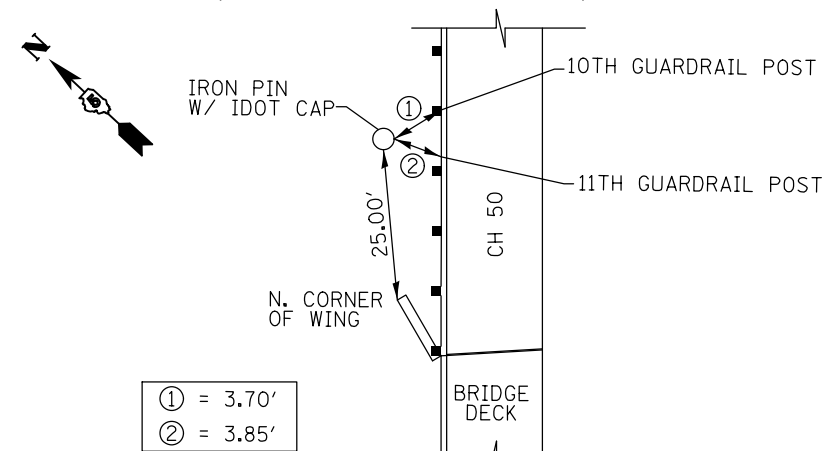
T.S. #500, STA. 13+71.33, 18.66' LT.



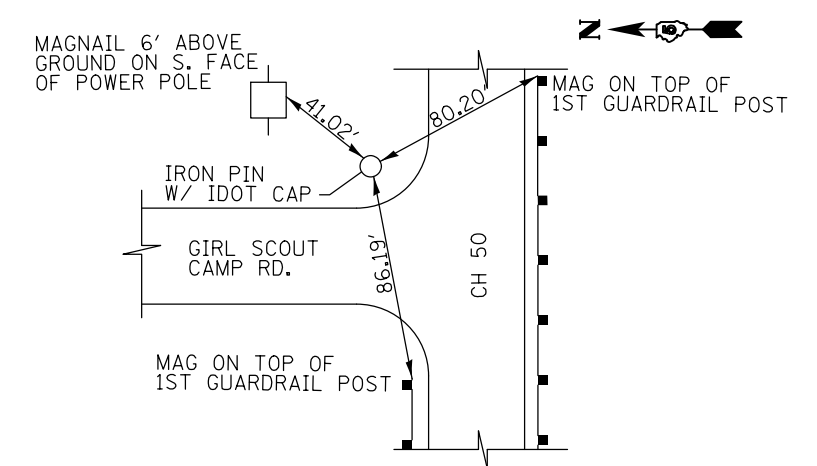
T.S. #501, STA. 19+90.20, 18.08' LT.



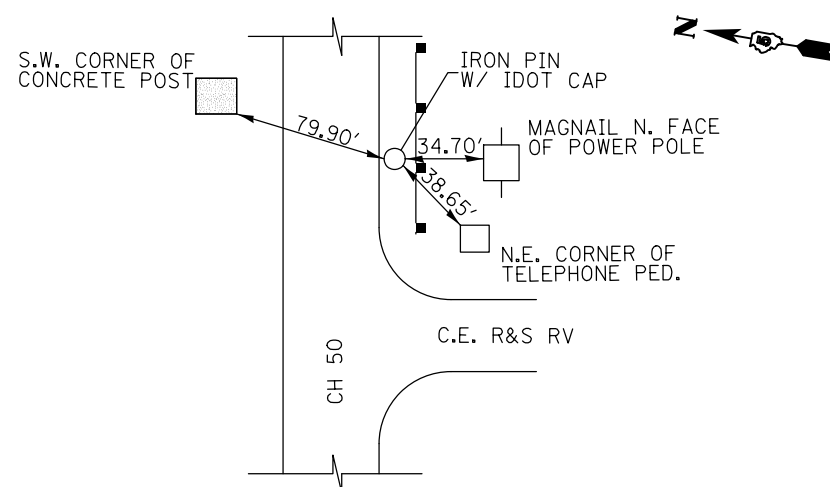
T.S. #502, STA. 23+24.94, 18.86' LT.



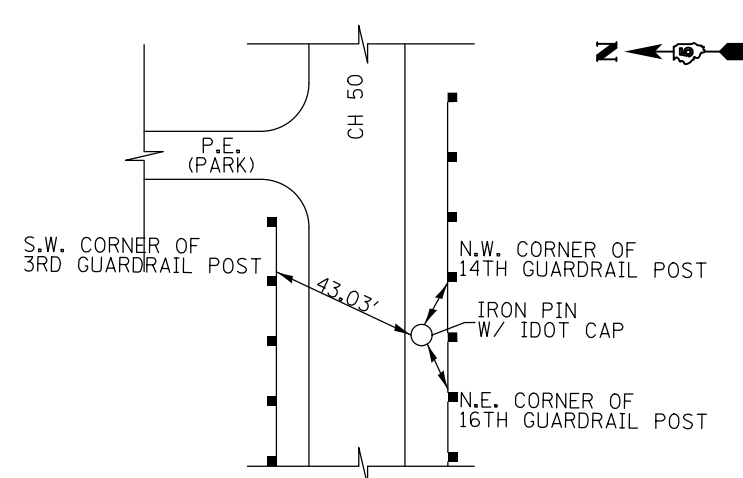
T.S. #503, STA. 28+01.07, 17.06' LT.



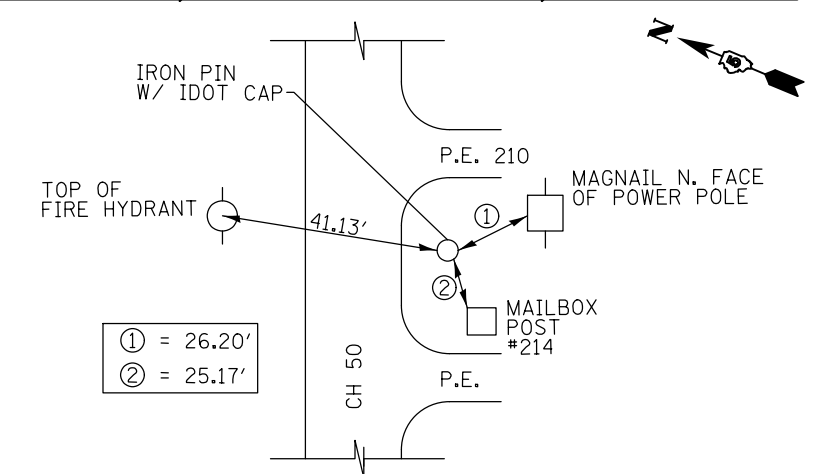
T.S. #504, STA. 32+19.03, 15.49' RT.



T.S. #523, STA. 33+98.00, 14.07' RT.



T.S. #505, STA. 37+23.42, 19.71' RT.



FILE NAME =	USER NAME = cealockbm	DESIGNED BMC	REVISED -
c:\pwork\pwork\cealockbm\d0208368\0570700-sht-ATB.dgn		DRAWN BMC	REVISED -
	PLOT SCALE = 40.0000' / in.	CHECKED -	REVISED -
	PLOT DATE = 11/9/2012	DATE 04-25-12	REVISED -

STATE OF ILLINOIS
DEPARTMENT OF TRANSPORTATION

ALIGNMENT CROSS TIES, TRAVERSE STATIONS & BENCHMARKS DATA

SCALE: N/A SHEET 2 OF 3 SHEETS STA. ---- TO STA. ----

F.A.I. RTE.	SECTION	COUNTY	TOTAL SHEETS	SHEET NO.
74	10-4BR	CHAMPAIGN	290	29
CONTRACT NO. 70700				
ILLINOIS FED. AID PROJECT				