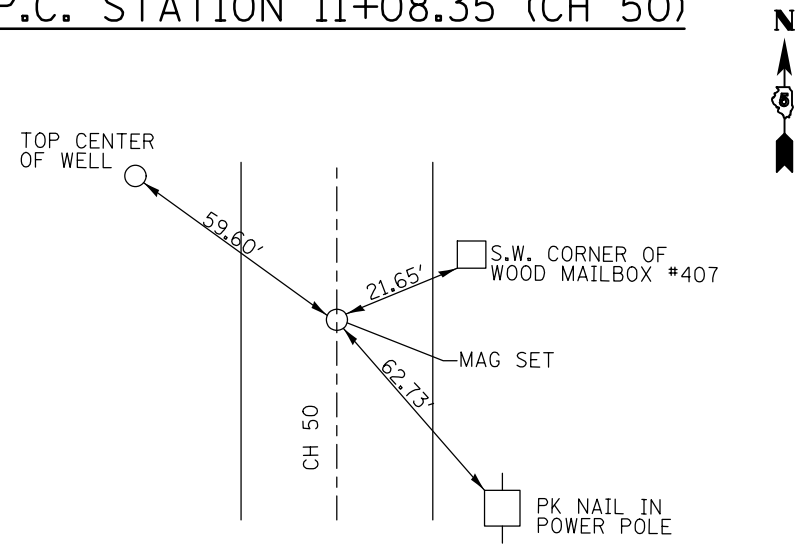
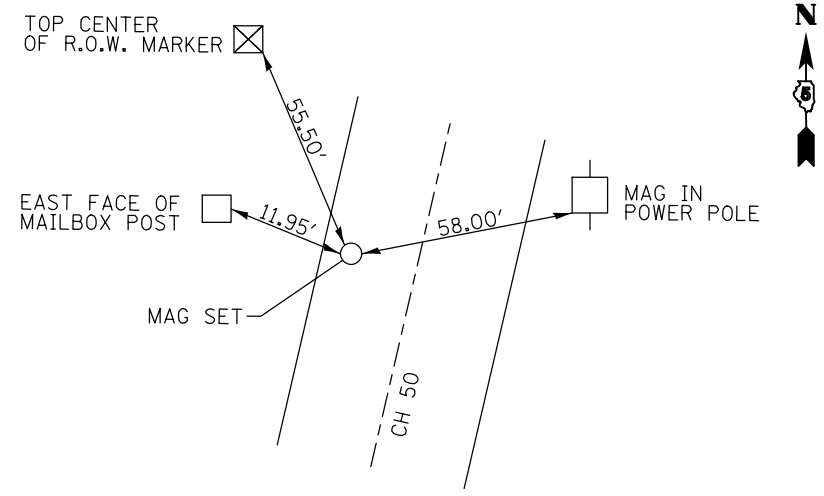


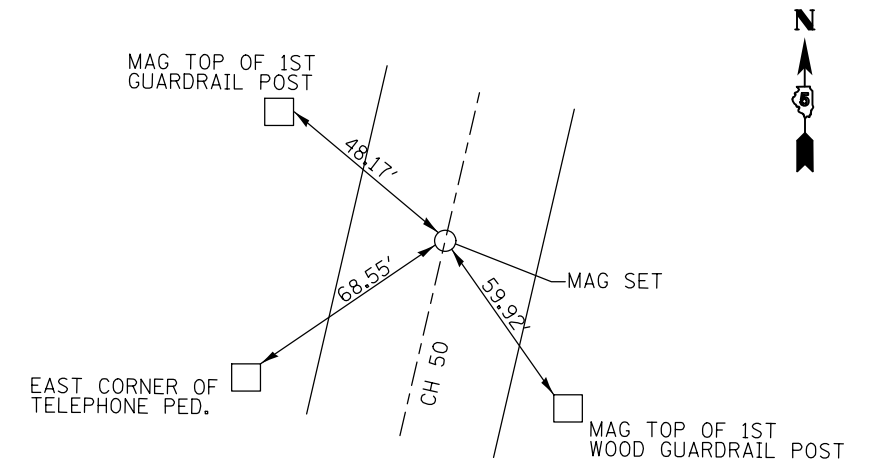
P.C. STATION 11+08.35 (CH 50)



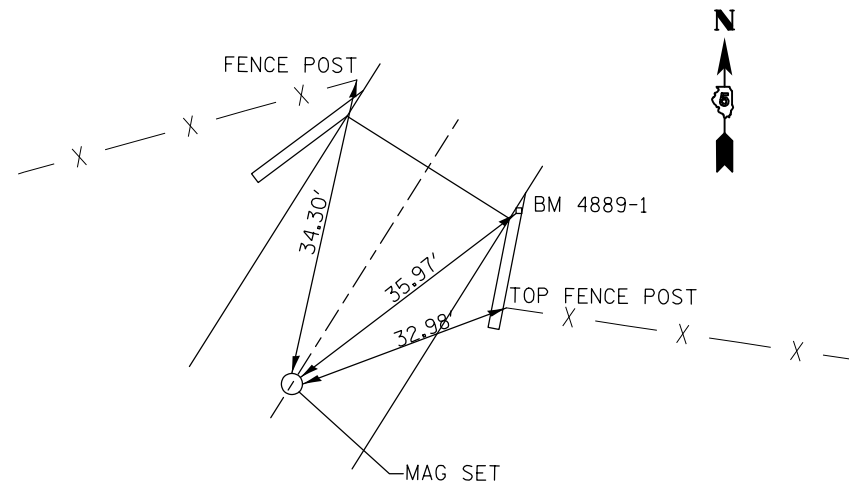
P.I. STATION 12+66.17 (CH 50) (PT. #188)



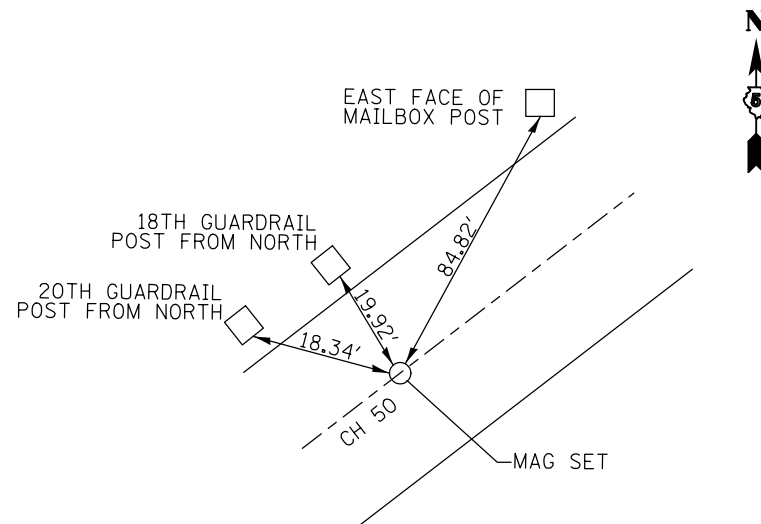
P.T. STATION 14+23.05 (CH 50)



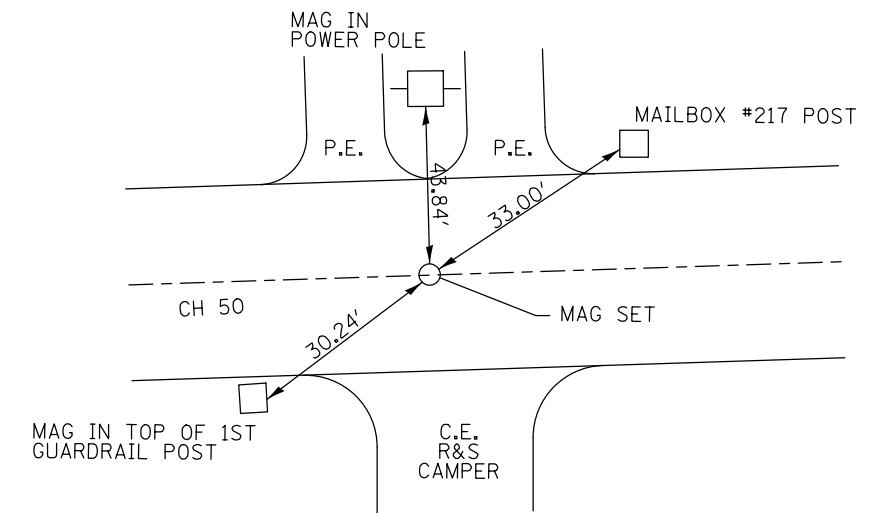
P.C. STATION 19+71.60 (CH 50)



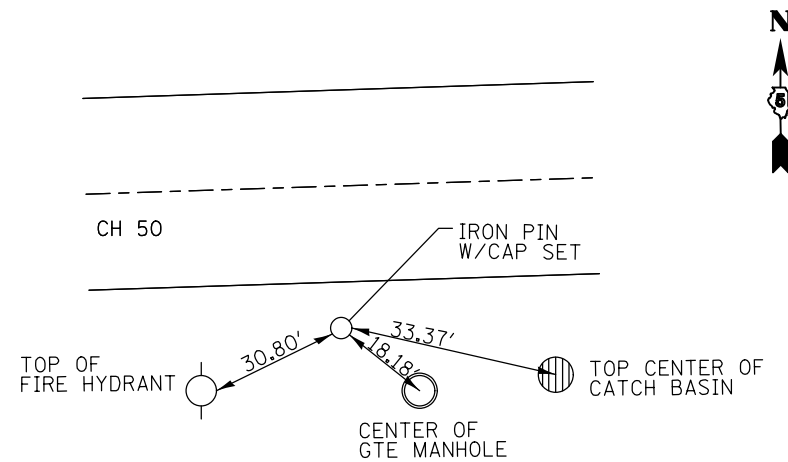
P.T. STATION 26+00.26 (CH 50)



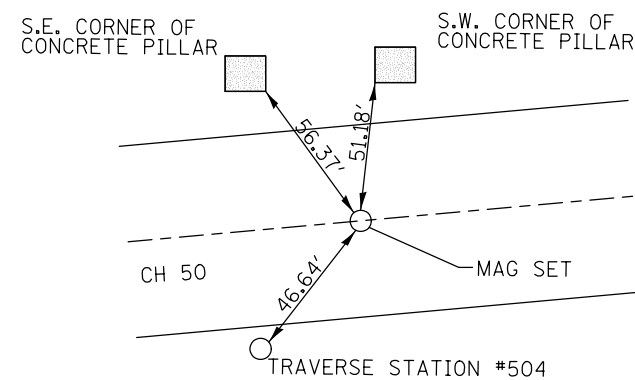
P.C. STATION 28+97.07 (CH 50)



P.I. STATION 30+83.08 (CH 50) (PT. #190)



P.T. STATION 32+62.61 (CH 50)



FILE NAME =	USER NAME = ceerlockbm	DESIGNED BMC	REVISED -
ce:\pw\work\p1dot\ceerlockbm\d0208368\0570700-sh-t-ATB.dgn		DRAWN BMC	REVISED -
	PLOT SCALE = 40.0000' / in.	CHECKED -	REVISED -
	PLOT DATE = 11/9/2012	DATE 04-25-12	REVISED -

STATE OF ILLINOIS
DEPARTMENT OF TRANSPORTATION

ALIGNMENT CROSS TIES, TRAVERSE STATIONS & BENCHMARKS DATA

SCALE: N/A SHEET 1 OF 3 SHEETS STA. ---- TO STA. ----

F.A.I. RTE.	SECTION	COUNTY	TOTAL SHEETS	SHEET NO.
74	10-4BR	CHAMPAIGN	290	28
CONTRACT NO. 70700				

ILLINOIS FED. AID PROJECT