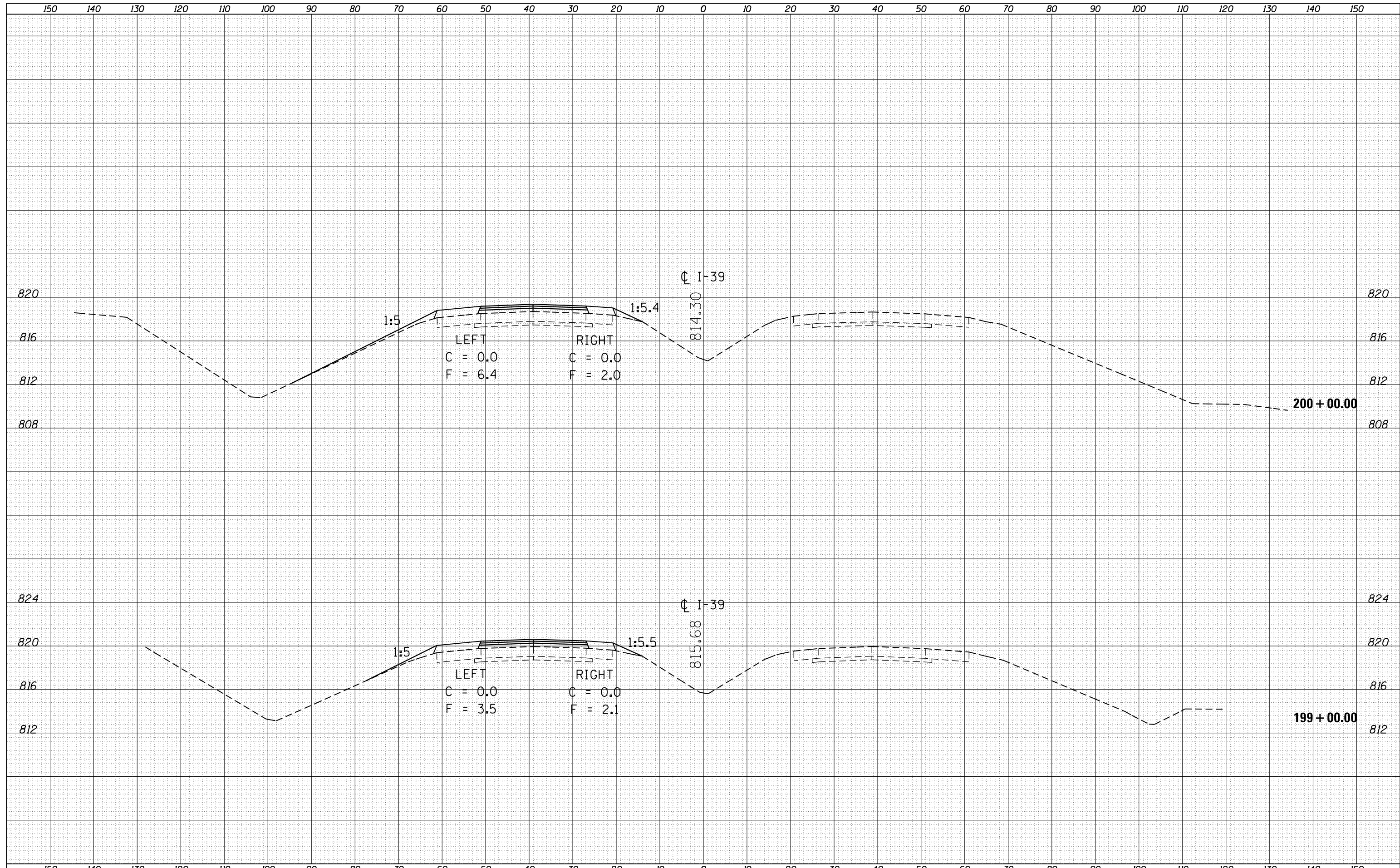


DATE	
BY	
FINAL SURVEY	SURVEYED
NOTE BOOK	PLOTTED
NO.	TEMPLATE
	AREAS CHECKED

DATE	
BY	
ORIGINAL SURVEY	SURVEYED
NOTE BOOK	PLOTTED
NO.	TEMPLATE
	AREAS CHECKED



FILE NAME =	USER NAME = hoganbj	DESIGNED -	REVISED -	STATE OF ILLINOIS DEPARTMENT OF TRANSPORTATION	CROSS SECTIONS I-39			F.A.I. RTE.	SECTION	COUNTY	TOTAL SHEETS	SHEET NO.
es:\pw_work\pwidot\hoganbj\d0339150\0570634-SHT	XS-139_Location.Ldgn	DRAWN -	REVISED -		39	57(2,3)RS(SB)	McLean	140	117			
Default	PLOT SCALE = 20.0000' / in.	CHECKED -	REVISED -		CONTRACT NO. 70634			ILLINOIS FED. AID PROJECT				
	PLOT DATE = 3/13/2013	DATE -	REVISED -		SCALE:	SHEET 22 OF 40 SHEETS	STA. 199+00	TO STA. 200+00				