

STATE OF ILLINOIS  
DEPARTMENT OF TRANSPORTATION  
DIVISION OF HIGHWAYS

**PROPOSED  
HIGHWAY PLANS**

F.A.I. ROUTE 39 (I-39 SOUTHBOUND)  
SECTION 57(2,3)RS(SB)  
PROJECT NHPP-0039(033)  
RUBBLIZATION / OVERLAY  
MCLEAN COUNTY

C-95-004-07  
I-55 TO N OF TR 157A

F.A.I. RTE.	SECTION	COUNTY	TOTAL SHEETS	SHEET NO.
39	57(2,3)RS(SB)	McLean	140	1
		ILLINOIS	CONTRACT NO. 70634	

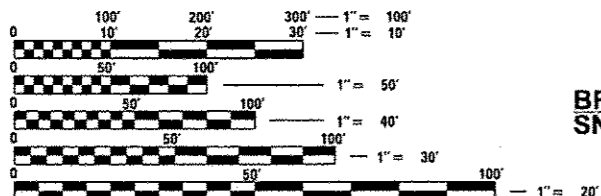
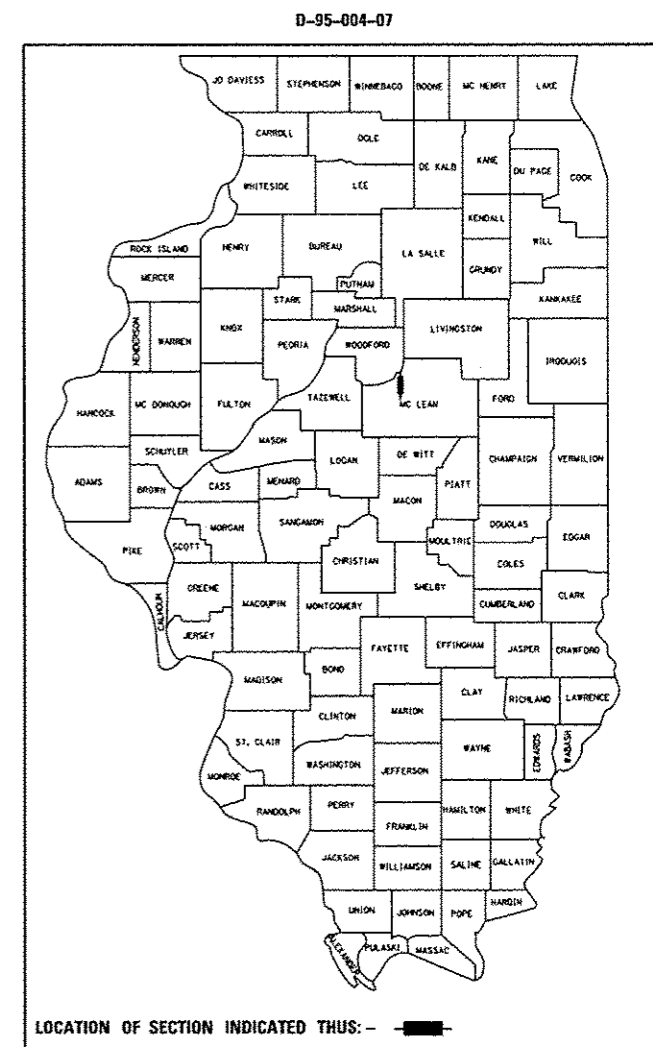
FOR INDEX OF SHEETS, SEE SHEET NO. 2  
FOR SUMMARY OF QUANTITIES, SEE SHEET NO. 7 THROUGH 13

**CURRENT TRAFFIC DATA**

	LEG "A"	LEG "B"	LEG "C"
2012 ADT	12,200	16,300	18,100
P.U. %	55.6	66.1	70.8
S.U. %	5.1	3.7	3.6
M.U. %	39.3	30.2	25.6

LEG "A" IS FROM I-55 TO THE I-39 SB TO I-55 NB RAMP IN NORMAL.  
LEG "B" IS FROM THE I-39 SB RAMP IN NORMAL TO US 51 BUS.  
LEG "C" IS FROM US 51 BUS TO N OF TR 157A.

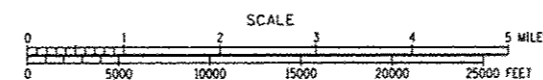
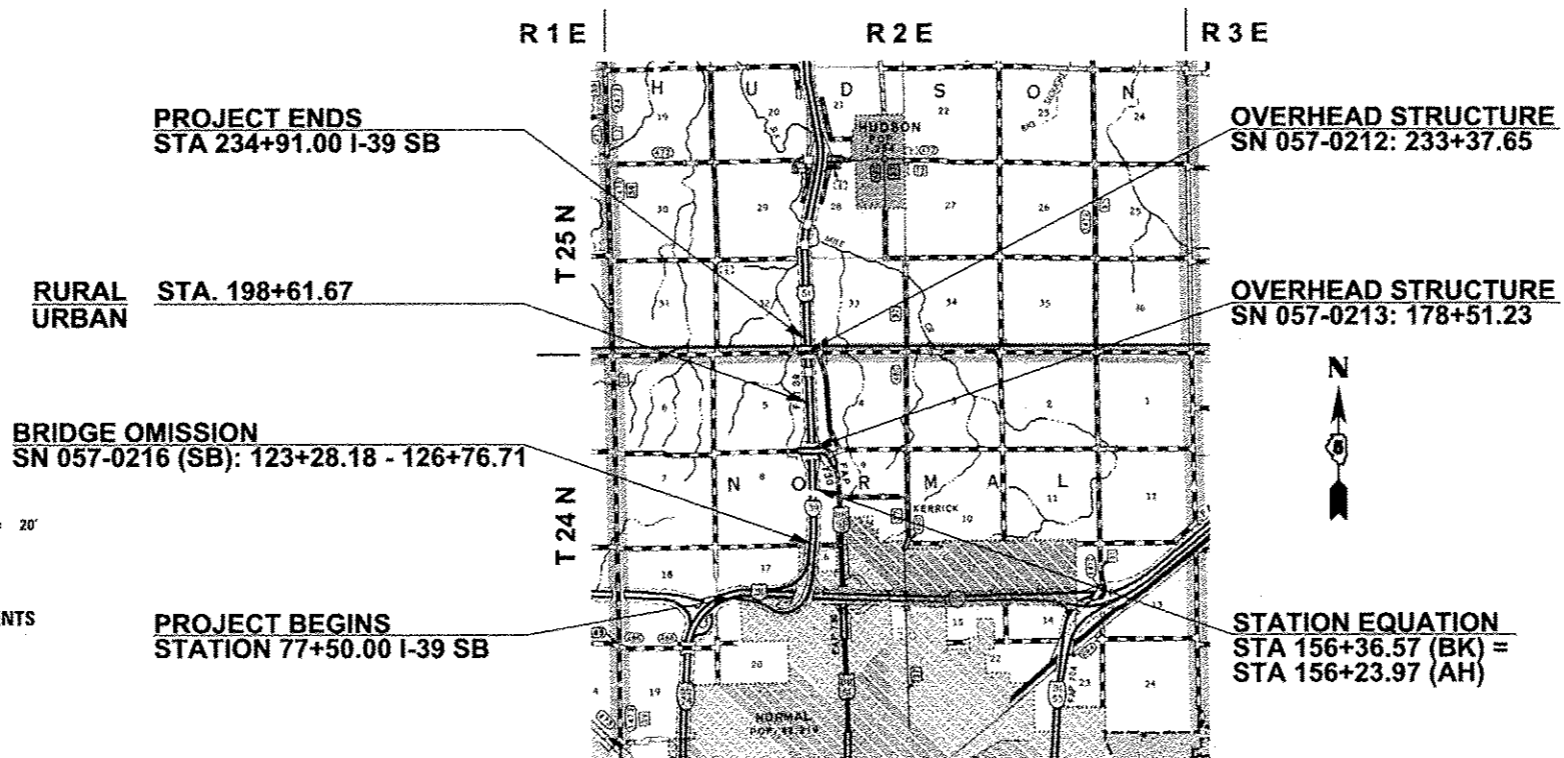
DESIGN DESIGNATION  
N/A



FULL SIZE PLANS HAVE BEEN PREPARED USING STANDARD ENGINEERING SCALES. REDUCED SIZED PLANS WILL NOT CONFORM TO STANDARD SCALES. IN MAKING MEASUREMENTS ON REDUCED PLANS, THE ABOVE SCALES MAY BE USED.

J.U.L.I.E.  
JOINT UTILITY LOCATION INFORMATION FOR EXCAVATION  
1-800-892-0123 (HUDSON & NORMAL TOWNSHIPS)  
OR 811

PROJECT ENGINEER: NANCY FASIG  
SQUAD LEADER: BRIAN J. HOGAN  
DESIGNER: ANDREW BERGAN  
(217) 465-4181  
CONTRACT NO. 70634



GROSS LENGTH = 15,753.60 FEET = 2.984 MILES  
NET LENGTH = 15,405.07 FEET = 2.918 MILES

STATE OF ILLINOIS  
DEPARTMENT OF TRANSPORTATION  
DIVISION OF HIGHWAYS

SUBMITTED MARCH 22, 2013  
Joseph E. Crowe  
DEPUTY DIRECTOR OF HIGHWAYS, REGION ENGINEER *cre*

May 10, 2013  
John D. Baranzelli, PE, Inc.  
acting ENGINEER OF DESIGN AND ENVIRONMENT

May 10, 2013  
Omair Osman, PE, Inc.  
DIRECTOR OF HIGHWAYS, CHIEF ENGINEER

PRINTED BY THE AUTHORITY  
OF THE STATE OF ILLINOIS