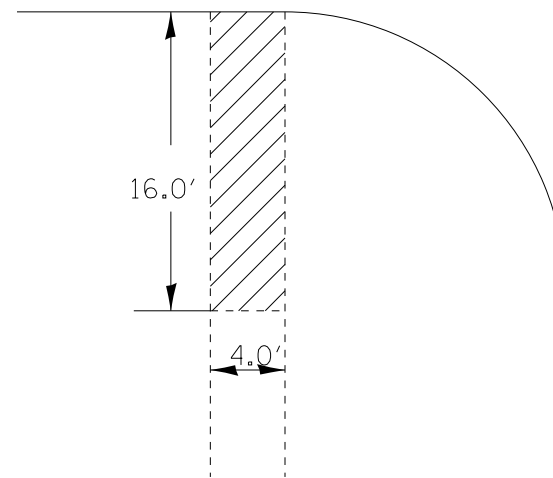
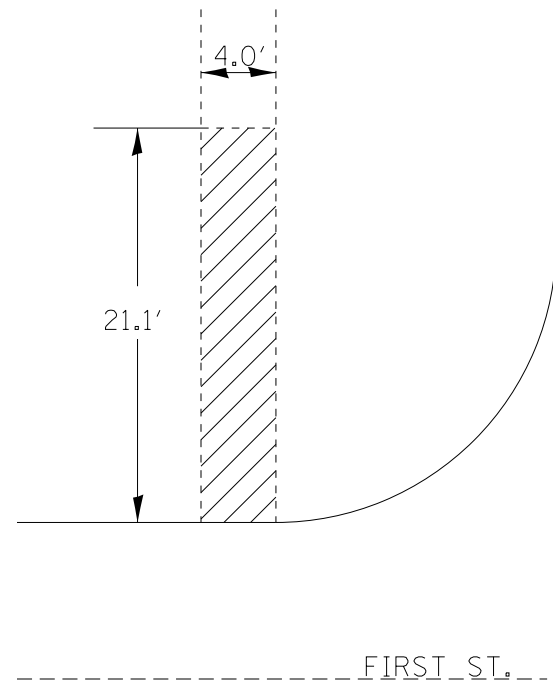


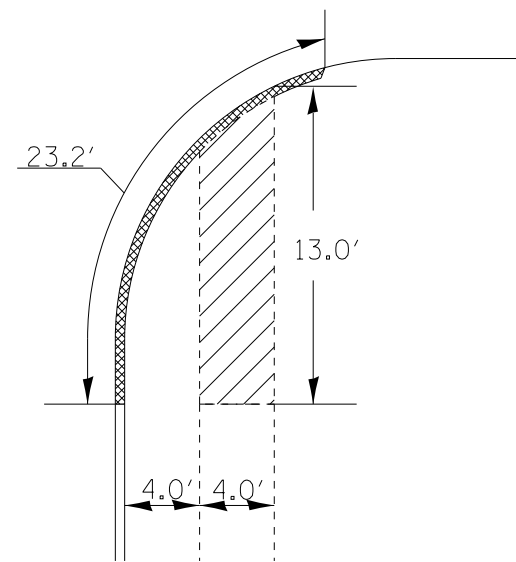
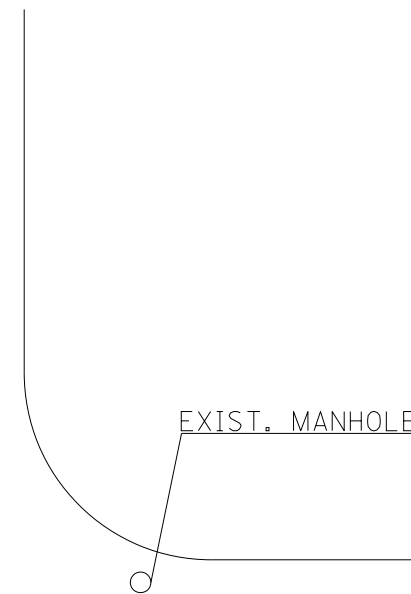
\*USE STANDARD DETECTABLE WARNING W/ DIMENSIONS OF 5' X '2, UNLESS OTHERWISE NOTED.

SIDEWALK REMOVAL = 84.4 SQ. FT.



SIDEWALK REMOVAL = 64.0 SQ. FT.

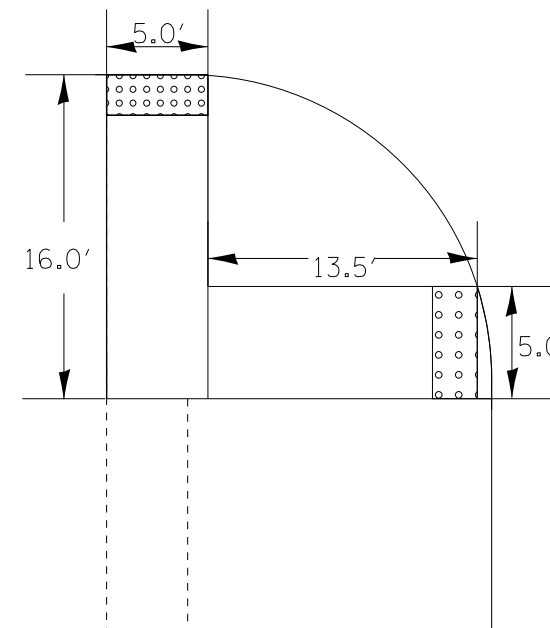
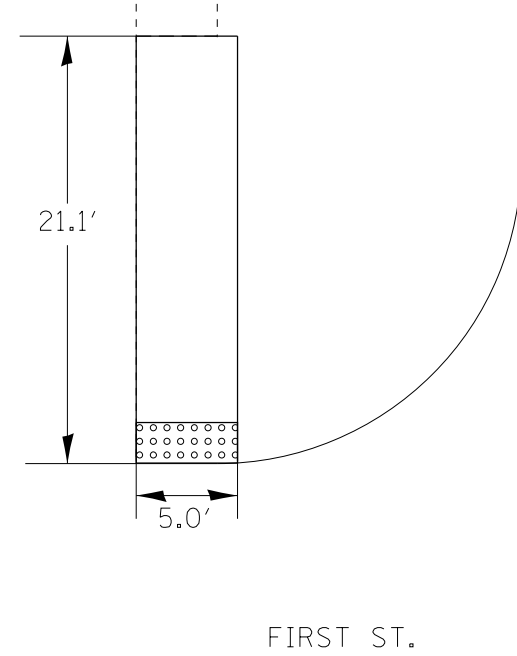
IL 117 (MAIN ST)



COMB. CURB & GUTTER REMOVAL = 23.2 FT.  
SIDEWALK REMOVAL = 52.0 SQ. FT.

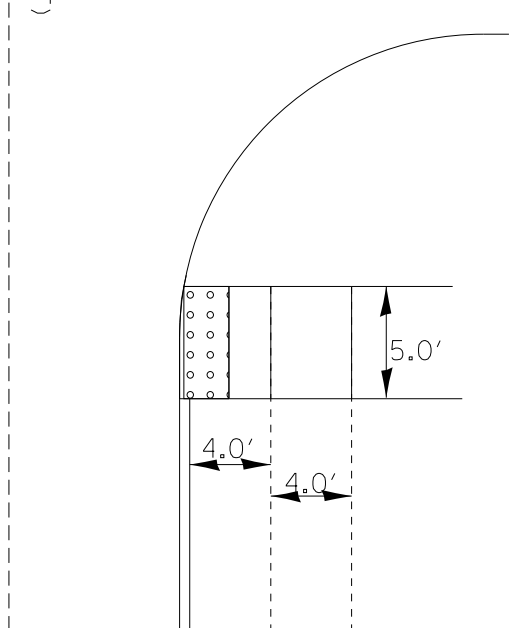
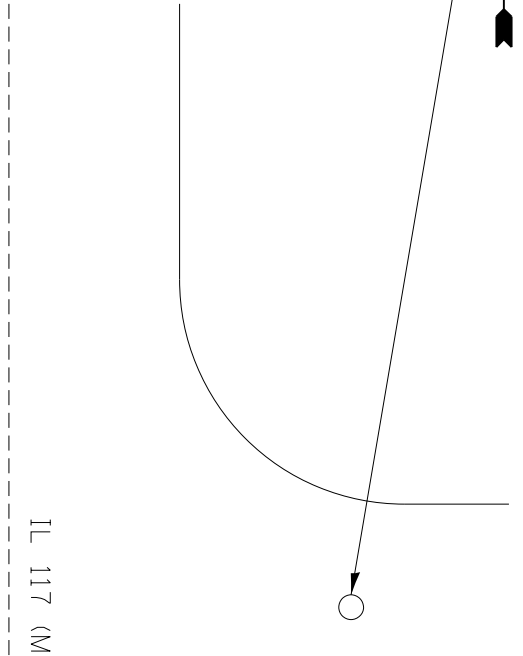
EXISTING

PROP. PCC SIDEWALK = 105.5 SQ. FT.  
(USE RURAL DETAIL A-A AND B-B)  
DETECTABLE WARNINGS = 10 SQ. FT.



PROP. PCC SIDEWALK = 147.5 SQ. FT.  
(USE RURAL DETAIL A-A AND B-B)  
DETECTABLE WARNINGS = 20 SQ. FT.

PROP. MANHOLE ADJUST.  
W/ FRAME & GRATE



PROP. PCC SIDEWALK = 40' SQ. FT.  
(USE RURAL STANDARD A-A AND B-B)  
DETECTABLE WARNINGS = 10 SQ. FT.

PROPOSED

DRAWING NOT TO SCALE

FILE NAME = 68982.dgn	USER NAME = aubreys	DESIGNED -	REVISED -
Default	PLOT SCALE = 48.0000' / in.	DRAWN -	REVISED -
	PLOT DATE = 3/21/2013	CHECKED -	REVISED -
		DATE -	REVISED -

STATE OF ILLINOIS  
DEPARTMENT OF TRANSPORTATION

SIDEWALK DETAILS (IL 117 AND FIRST ST)

SCALE: SHEET 37 OF 51 SHEETS STA. 579+80

F.A.S. RTE.	SECTION	COUNTY	TOTAL SHEETS	SHEET NO.
2361	101 RS-4; 102 RS-5	MARSHALL	51	37
CONTRACT NO. 68982				
ILLINOIS FED. AID PROJECT				