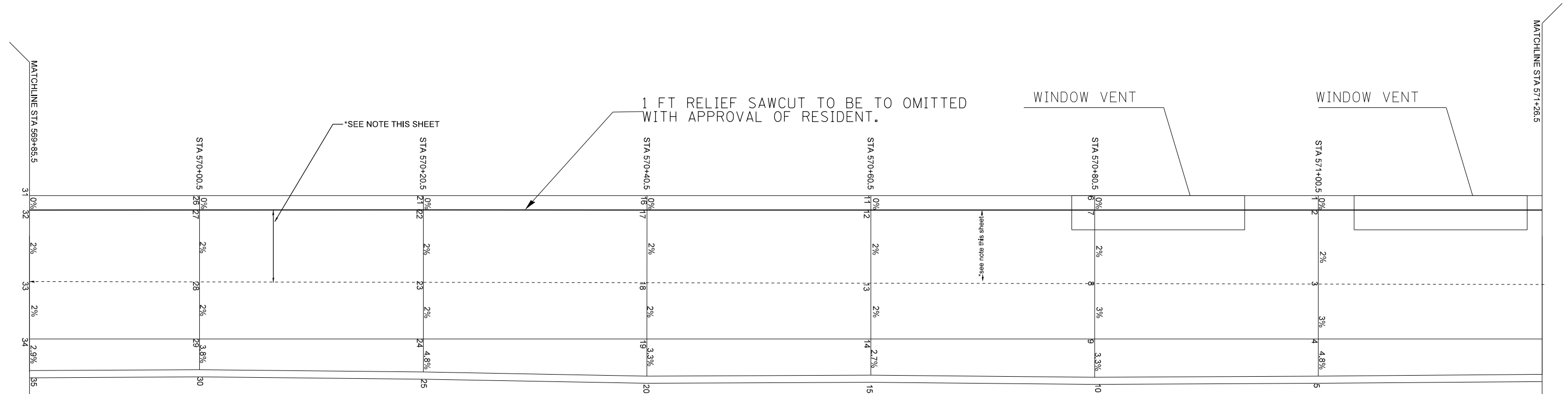


NOTE: PEDESTRIAN ACCESS ROUTE
(5FT MIN. PATH WITH A CROSS-SLOPE OF 2% MAX.)

SEE SCHEDULES FOR REMOVAL AND PROPOSED QUANTITIES



| LOCATION | POINT NUMBER | ELEVATION | "T" CURB HEIGHT |
|--------------|--------------|-----------|-----------------|
| STA 571+00.5 | 1 | 11.06 | N/A |
| STA 571+00.5 | 2 | 11.06 | N/A |
| STA 571+00.5 | 3 | 10.96 | N/A |
| STA 571+00.5 | 4 | 10.84 | 6" |
| STA 571+00.5 | 5 | 9.69 | 6" |
| STA 570+80.5 | 6 | 11.58 | N/A |
| STA 570+80.5 | 7 | 11.58 | N/A |
| STA 570+80.5 | 8 | 11.48 | N/A |
| STA 570+80.5 | 9 | 11.36 | 6" |
| STA 570+80.5 | 10 | 10.26 | 6" |
| STA 570+60.5 | 11 | 11.76 | N/A |
| STA 570+60.5 | 12 | 11.76 | N/A |
| STA 570+60.5 | 13 | 11.66 | N/A |
| STA 570+60.5 | 14 | 11.58 | 5" |
| STA 570+60.5 | 15 | 10.58 | 6" |
| STA 570+40.5 | 16 | 11.82 | N/A |
| STA 570+40.5 | 17 | 11.82 | N/A |
| STA 570+40.5 | 18 | 11.72 | N/A |
| STA 570+40.5 | 19 | 11.64 | 4" |
| STA 570+40.5 | 20 | 10.71 | 6" |

| LOCATION | POINT NUMBER | ELEVATION | "T" CURB HEIGHT |
|--------------|--------------|-----------|-----------------|
| STA 570+20.5 | 21 | 12.22 | N/A |
| STA 570+20.5 | 22 | 12.22 | N/A |
| STA 570+20.5 | 23 | 12.12 | N/A |
| STA 570+20.5 | 24 | 12.04 | 3" |
| STA 570+20.5 | 25 | 11.15 | 6" |
| STA 570+00.5 | 26 | 12.60 | N/A |
| STA 570+00.5 | 27 | 12.60 | N/A |
| STA 570+00.5 | 28 | 12.50 | N/A |
| STA 570+00.5 | 29 | 12.42 | 3" |
| STA 570+00.5 | 30 | 11.57 | 6" |
| STA 569+85.5 | 31 | 12.82 | N/A |
| STA 569+85.5 | 32 | 12.82 | N/A |
| STA 569+85.5 | 33 | 12.72 | N/A |
| STA 569+85.5 | 34 | 12.64 | 3" |
| STA 569+85.5 | 35 | 11.82 | 6" |

DRAWING NOT TO SCALE