

F.A.S. RTE.	SECTION	COUNTY	TOTAL SHEETS	SHEET NO.
IL117	101RS-4;102RS-5	MARSHALL	51	1
		ILLINOIS	CONTRACT NO. 68982	

STATE OF ILLINOIS
DEPARTMENT OF TRANSPORTATION
DIVISION OF HIGHWAYS
PROPOSED
HIGHWAY PLANS
F.A.S ROUTE 2361 (IL ROUTE 117)
SECTION 101RS-4;102RS-5
PROJECT RS-2361(108)
TYPE OF IMPROVEMENT 3P
MARSHALL COUNTY

D94-047-10



INDEX OF SHEETS

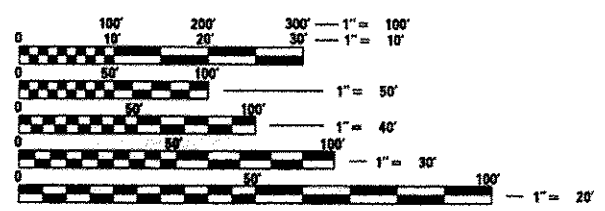
- 1 COVER SHEET/INDEX OF SHEETS
- 2 GENERAL NOTES
- 3 JOB SPECIFIC NOTES/MIX REQUIREMENT
- 4-7 SUMMARY OF QUANTITIES
- 8-14 SCHEDULE OF QUANTITIES
- 15 LINE DIAGRAM
- 16-18 TYPICAL SECTIONS
- 19 STRUCTURE DETAIL
- 20 SIDEROAD DETAIL
- 21-41 CURB RAMP & SIDEWALK DETAILS
- 42-45 PARKING LANE PAVEMENT MARKING DETAILS
- 46-51 CADD STANDARD

HIGHWAY STANDARD

- 424001-07701306-03
- 424006-01701311-03
- 424011-01701336-06
- 424016-01701501-06
- 424021-01701801-05
- 424026-01701901-02
- 606001-05780001-03
- 701301-04781001-03

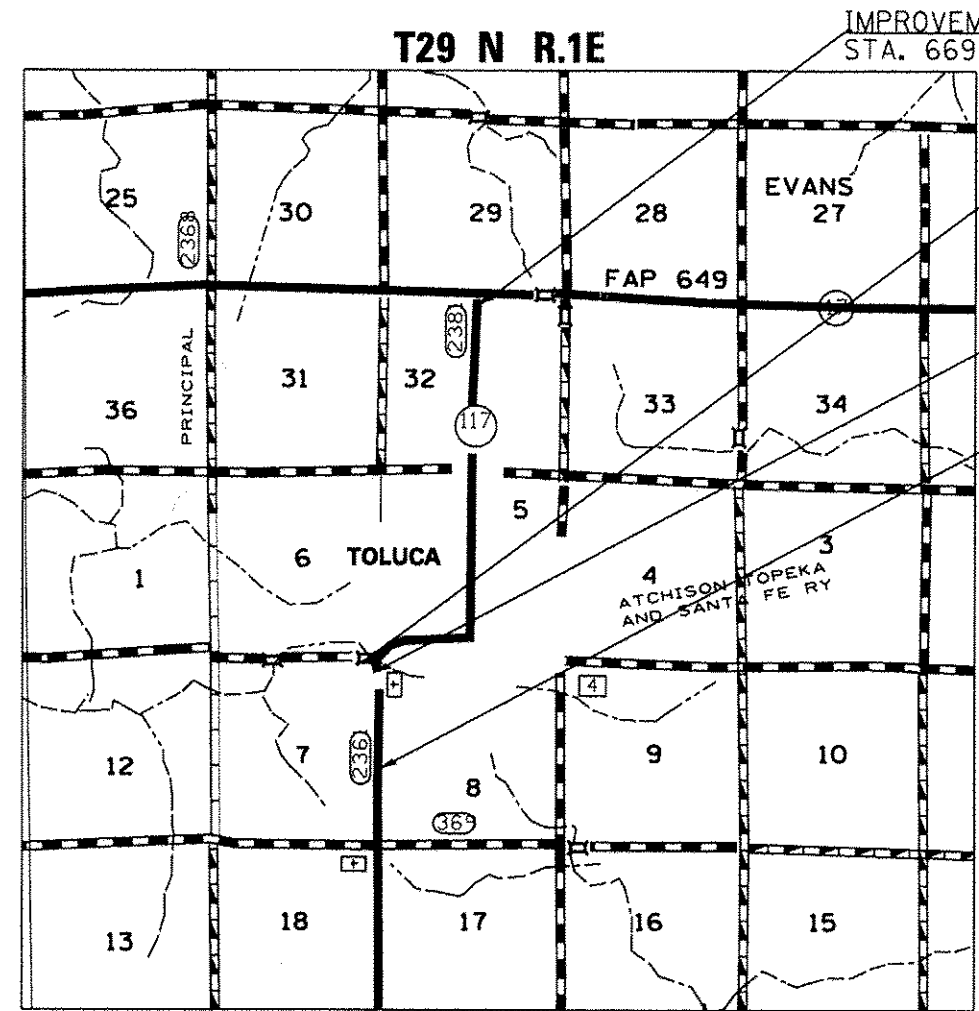
ADT

NORTH LEG 2050 MU=4% SU=4.9% (2011)
 SOUTH LEG 800 MU=3.8% SU=3.8% (2011)



FULL SIZE PLANS HAVE BEEN PREPARED USING STANDARD ENGINEERING SCALES. REDUCED SIZED PLANS WILL NOT CONFORM TO STANDARD SCALES. IN MAKING MEASUREMENTS ON REDUCED PLANS, THE ABOVE SCALES MAY BE USED.

J.U.L.I.E.
 JOINT UTILITY LOCATION INFORMATION FOR EXCAVATION
 1-800-892-0123
 OR 811



IMPROVEMENT ENDS
 STA. 669+40

S.N. 062-0039
 STA. 531 + 29.25

RAILROAD LIMITS.
 STA. 530+00 TO 530+24

IMPROVEMENT BEGINS
 STA. 482+98



JOB DESCRIPTION : PATCHING, MILLING AND RESURFING ON IL117 FROM SOUTH OF TOLUCA TO IL117/17 JCT.
 SIDEWALK AND CURB RAMP REPAIR

GROSS LENGTH = 18,642 FT. = 3.53 MILE
 NET LENGTH = 18,618 FT. = 3.53 MILE

PROJECT ENGINEER: RICH DOTSON (309) 671-3455
 PROJECT MANAGER: ANNA GHIDINA (309) 671-3474
 CONTRACT NO. 68982
 CATALOG NO. 034452-00D

STATE OF ILLINOIS
 DEPARTMENT OF TRANSPORTATION
 DIVISION OF HIGHWAYS

SUBMITTED March 21 2013
Joseph E. Howlett
 DEPUTY DIRECTOR OF HIGHWAYS, REGION ENGINEER

May 10 2013
John D. Baranzelli PE
 acting ENGINEER OF DESIGN AND ENVIRONMENT

May 10 2013
Onet Osman PE
 DIRECTOR OF HIGHWAYS, CHIEF ENGINEER

**PRINTED BY THE AUTHORITY
 OF THE STATE OF ILLINOIS**