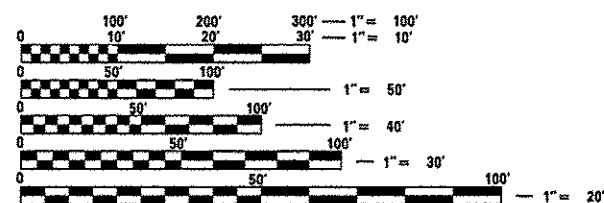


INDEX OF SHEETS

1. COVER SHEET
2. GENERAL NOTES
3. SUMMARY OF QUANTITIES
4. TYPICAL SECTIONS
- 5 - 8. SCHEDULES
- 9 - 10. TRAFFIC CONTROL AND PROTECTION, STANDARD 701400 (SPECIAL)
- 11 - 13. CLASS A PATCHES
- 14 - 16. CLASS B PATCHES
17. TYPICAL PAVEMENT MARKINGS

HIGHWAY STANDARDS

000001-06	STANDARD SYMBOLS, ABBREVIATIONS AND PATTERNS
001001-02	AREAS OF REINFORCEMENT BARS
001006	DECIMAL OF AN INCH AND OF A FOOT
420701-02	PAVEMENT FABRIC
421001-02	BAR REINFORCEMENT FOR CRC PAVEMENT
701101-03	OFF-ROAD OPERATIONS MULTILANE, 15' (4.5 m) TO 24' (600 mm) FROM PAVEMENT EDGE
701401-07	LANE CLOSURE, FREEWAY/EXPRESSWAY
701411-08	LANE CLOSURE, MULTILANE, AT ENTRANCE OR EXIT RAMP FOR SPEEDS ≥ 45 MPH
701426-05	LANE CLOSURE, MULTILANE INTERMITTENT OR MOVING OPERATION, FOR SPEEDS ≥ 45 MPH
701456-02	PARTIAL EXIT RAMP CLOSURE FREEWAY/EXPRESSWAY
701901-02	TRAFFIC CONTROL DEVICES



FULL SIZE PLANS HAVE BEEN PREPARED USING STANDARD ENGINEERING SCALES. REDUCED SIZED PLANS WILL NOT CONFORM TO STANDARD SCALES. IN MAKING MEASUREMENTS ON REDUCED PLANS, THE ABOVE SCALES MAY BE USED.

J.U.L.I.E.
JOINT UTILITY LOCATION INFORMATION FOR EXCAVATION
1-800-892-0123
OR 811

PROJECT ENGINEER: JOE KANNEL P.E.
UNIT CHIEF: RON WOODSHANK
TOWNSHIP: PATTON
CONTRACT NO. 66C93

STATE OF ILLINOIS

DEPARTMENT OF TRANSPORTATION

DIVISION OF HIGHWAYS

PROPOSED

HIGHWAY PLANS

FAI ROUTE 57 (I-57)

SECTION D3 PATCHING 2014-5

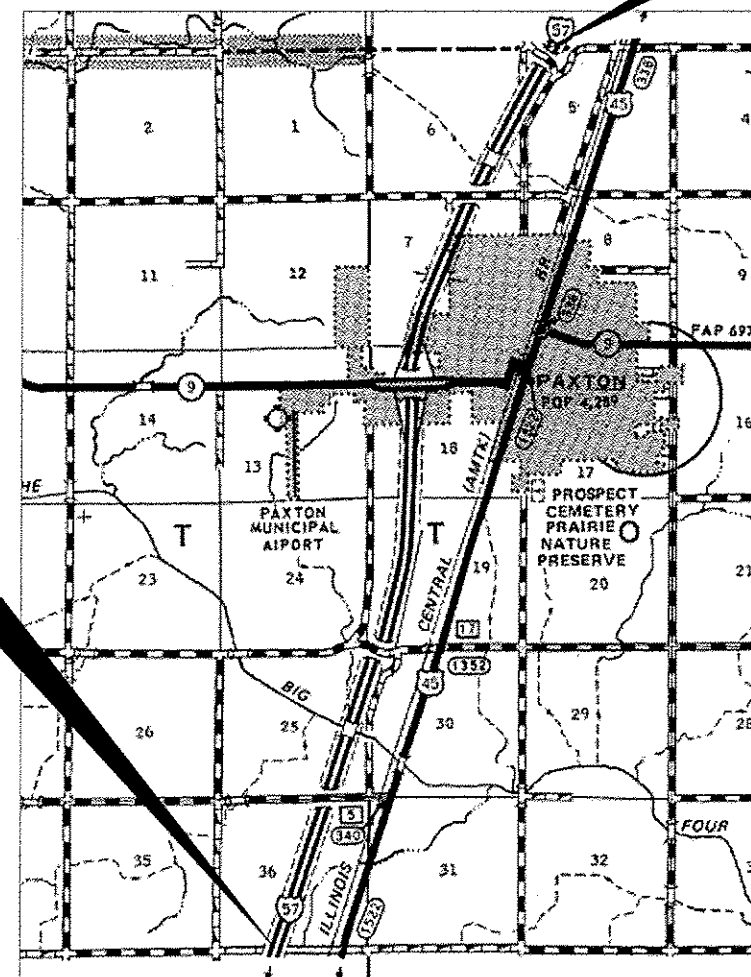
PAVEMENT PATCHING

FORD

C-93-087-13

END PROJECT
IROQUOIS COUNTY LINE
(M.P. 263.19)

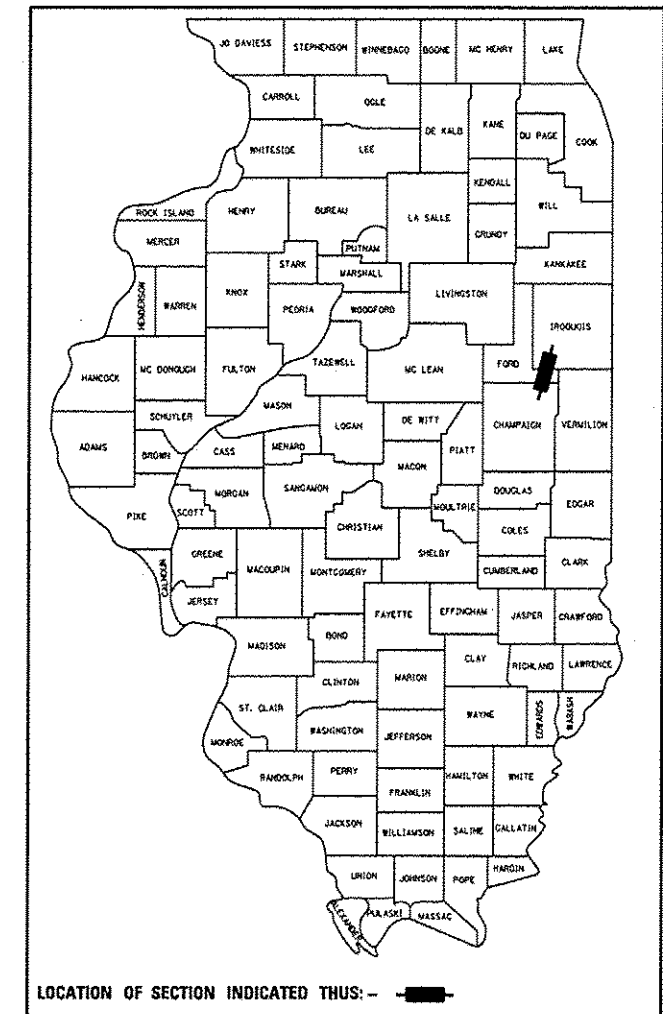
BEGIN PROJECT
CHAMPAIGN COUNTY LINE
(M.P. 257.14)



GROSS LENGTH = 31944 FT. = 6.05 MILE
NET LENGTH = 466 FT. = 0.088 MILE

F.A.I. RTE.	SECTION	COUNTY	TOTAL SHEETS	SHEET NO.
57	D3 PATCHING 2014-5	FORD	16	1
ILLINOIS CONTRACT NO. 66C93				

D-93-002-13



RURAL
INTERSTATE
FAI 57 (I-57)
2011

ADT	17300
P.V.	65.23%
S.U.	3.99%
M.U.	30.78%

STATE OF ILLINOIS
DEPARTMENT OF TRANSPORTATION
DIVISION OF HIGHWAYS

SUBMITTED 4-3-2013
Paul A. Tabor
DEPUTY DIRECTOR OF HIGHWAYS, REGION ENGINEER

May 10 2013
John D. Baranelli P.E.
ENGINEER OF DESIGN AND ENVIRONMENT

May 10 2013
Omer Osman P.E.
DIRECTOR OF HIGHWAYS, CHIEF ENGINEER

PRINTED BY THE AUTHORITY
OF THE STATE OF ILLINOIS