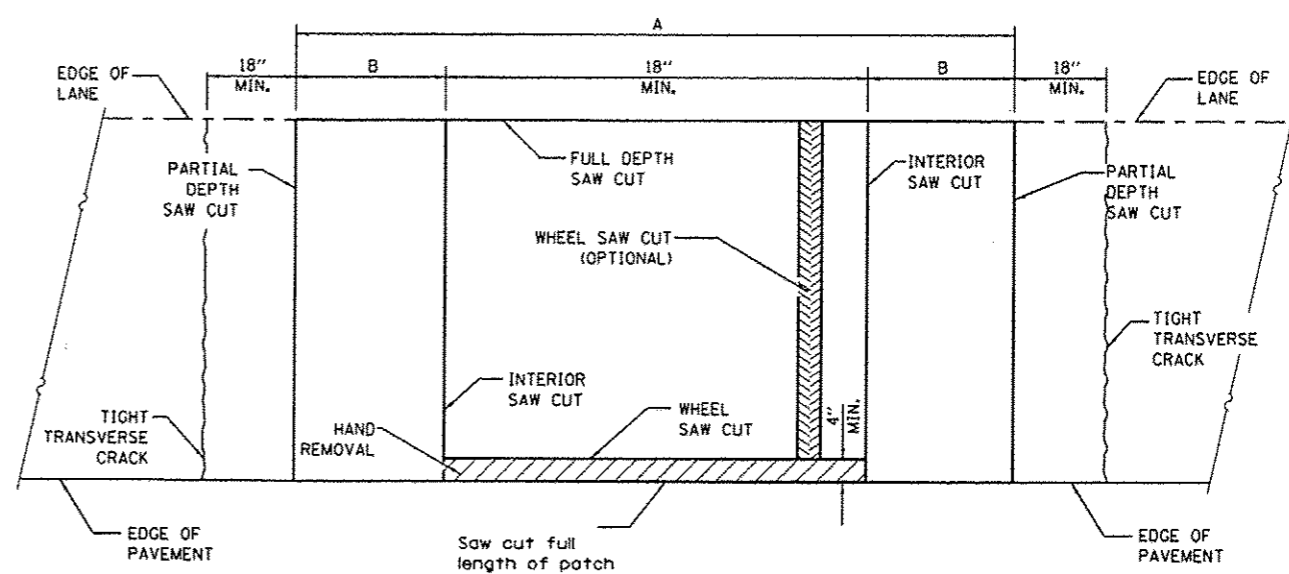
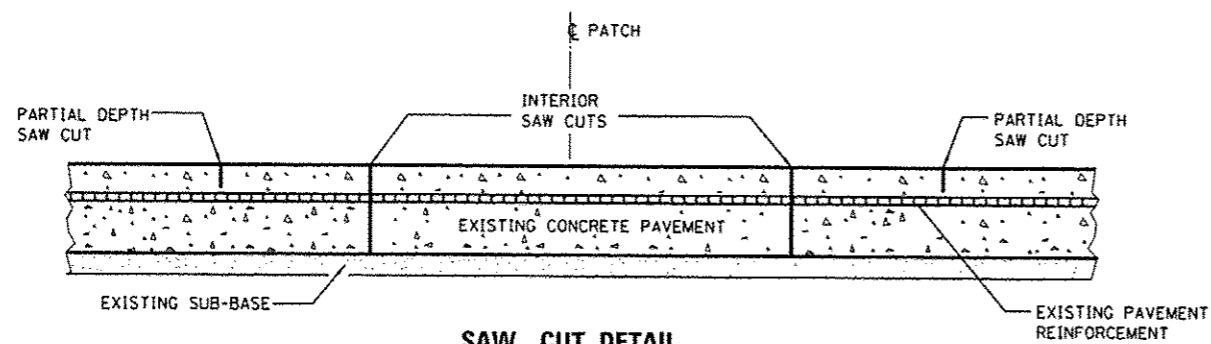


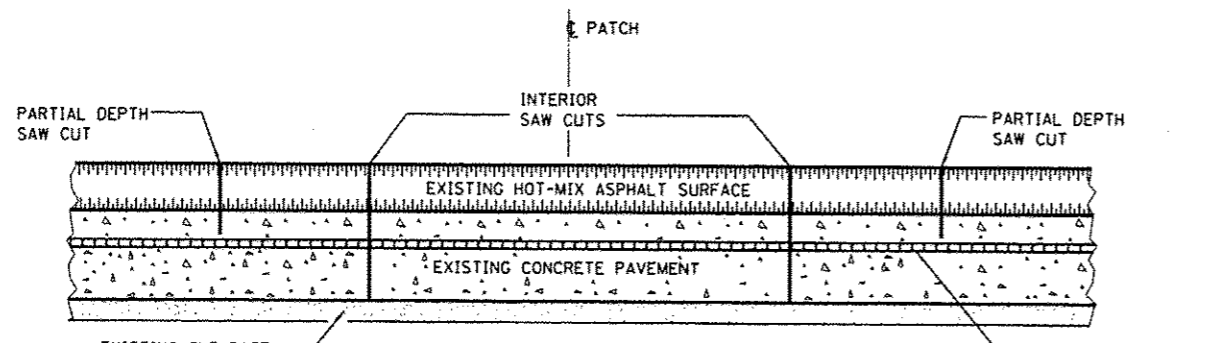
**PAVEMENT SAWING DETAIL**  
(HMA SHOULDER)



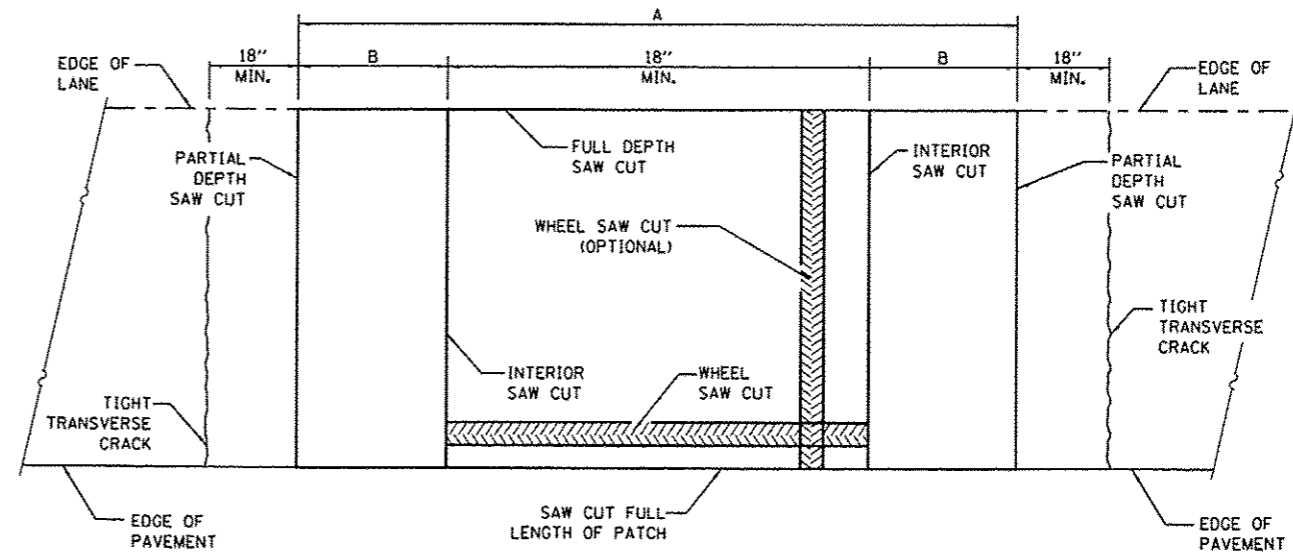
**PAVEMENT SAWING DETAIL**  
(PCC SHOULDER)



**SAW CUT DETAIL**  
WITHOUT HMA SURFACE



**SAW CUT DETAIL**  
WITH HMA SURFACE



**ALTERNATE SAWING DETAIL**  
(PCC SHOULDER)

EXISTING REINFORCEMENT BARS	A (MIN.)	B (MIN.)	C (MIN.)
#5	4'-6"	18"	16"
#6	5'-0"	21"	19"
#7	5'-6"	24"	22"
FABRIC	5'-0"	21"	18"

**GENERAL NOTES**

WHEN PATCHING TWO ADJACENT LANES IN ONE OPERATION THE LONGITUDINAL JOINT SHALL BE LONGITUDINAL SAWED JOINT AS DETAILED ON STANDARD 420001, HOWEVER, THE GROOVE MAYBE EITHER PREFORMED OR SAWED.

SEE STANDARD 421001 FOR DETAILS OF PAVEMENT REINFORCEMENT.

FILE NAME =	USER NAME = potelyj	DESIGNED -	REVISED -
c:\pv_work\pavdot\potelyj\08335477\0366089-shr-details.dgn		DRAWN -	REVISED -
		CHECKED -	REVISED -
		DATE -	REVISED -

STATE OF ILLINOIS  
DEPARTMENT OF TRANSPORTATION

**CLASS A PATCHES**

SCALE:	SHEET NO. 1 OF 1 SHEETS	STA.	TO STA.	F.A.I. RTE.	SECTION	COUNTY	TOTAL SHEETS	SHEET NO.
				57	D3 PATCHING 2014-3	KANKAKEE	17	11
							CONTRACT NO. 66C89	
ILLINOIS FED. AID PROJECT								