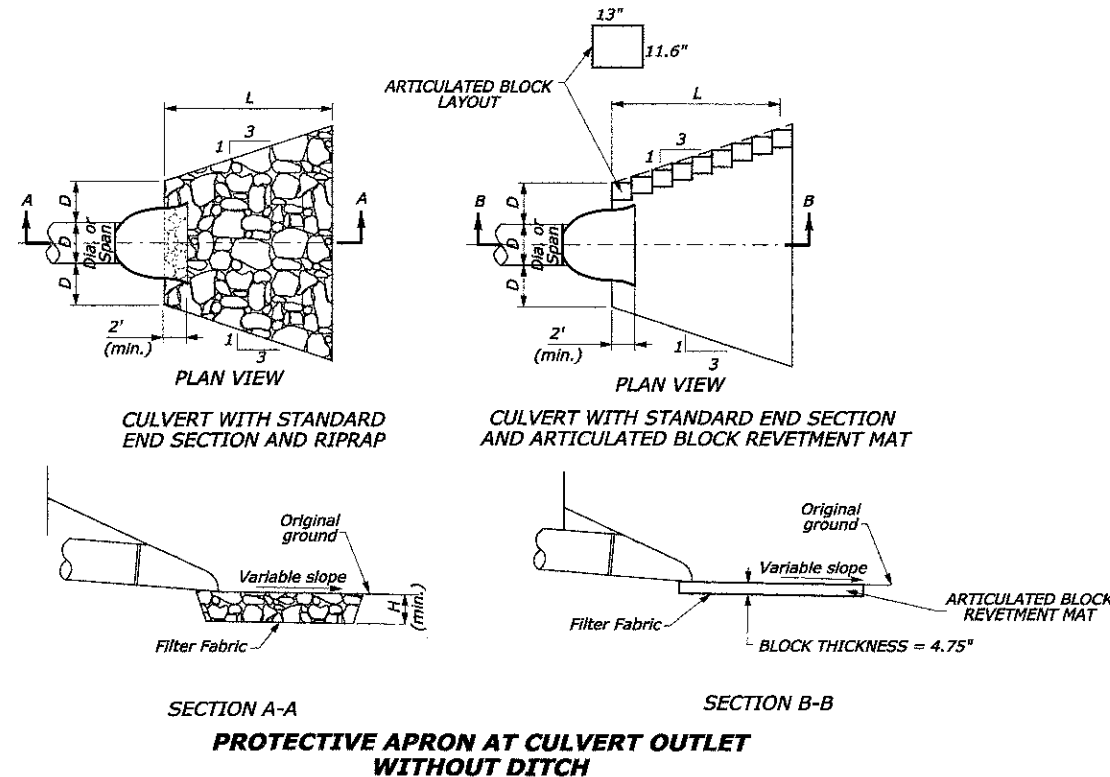


EROSION CONTROL NOTES:

- ALL WORK SHALL BE DONE IN ACCORDANCE WITH THE KANE COUNTY STORMWATER MANAGEMENT ORDINANCE. ALL CONSTRUCTION ACTIVITIES WILL BE IN ACCORDANCE WITH THE NATIONAL POLLUTANT DISCHARGE ELIMINATION SYSTEM STORM WATER PERMIT ILR40.
- EROSION CONTROL SHALL BE PROVIDED IN ACCORDANCE WITH THE SEQUENCE OF STAGE CONSTRUCTION. THE CONTRACTOR SHALL SUBMIT A DETAILED SCHEDULE FOR APPROVAL.
- SEDIMENT AND EROSION CONTROL DEVICES SHALL BE FUNCTIONAL BEFORE THE PROJECT SITE IS OTHERWISE DISTURBED.
- ALL DISTURBED AREAS SHALL BE SEEDED OR SODDED AS SOON AS PRACTICAL AFTER CONSTRUCTION ACTIVITIES IN THAT AREA HAVE CONCLUDED. THE SURFACE OF STRIPPED AREAS SHALL BE PERMANENTLY OR TEMPORARILY PROTECTED FROM SOIL EROSION WITHIN 14 DAYS AFTER FINAL GRADE IS REACHED. STRIPPED AREAS THAT WILL REMAIN UNDISTURBED FOR MORE THAN 15 DAYS AFTER INITIAL DISTURBANCE SHALL BE PROTECTED FROM EROSION. TEMPORARY SEDIMENT AND EROSION CONTROL MEASURES SHALL BE MAINTAINED CONTINUOUSLY UNTIL PERMANENT COVER IS ESTABLISHED.
- IF A TOPSOIL STOCKPILE IS TO REMAIN IN PLACE FOR MORE THAN 3 DAYS, EROSION CONTROL MEASURES WILL BE PROVIDED. SOIL STOCKPILES MUST NOT BE LOCATED WITHIN ANY SPECIAL MANAGEMENT AREAS. SPECIAL MANAGEMENT AREAS INCLUDE WETLANDS, ADJACENT OFF-SITE WETLANDS, AND FLOODPLAINS.
- THE CONTRACTOR SHALL TAKE ALL PRECAUTIONS TO PROTECT WETLANDS TO REMAIN FROM DAMAGE BY SEDIMENT, CONSTRUCTION EQUIPMENT OR BY HIS WORK CREWS. THE CONTRACTOR SHALL ASSURE THAT DEBRIS OR ANY CONSTRUCTION MATERIAL IS NOT DISPOSED OF IN WETLANDS.
- WATER PUMPED OR OTHERWISE DISCHARGED FROM THE SITE DURING CONSTRUCTION DEWATERING SHALL BE FILTERED.
- WHEN TEMPORARY DRAINAGE IS ESTABLISHED, EROSION CONTROL MEASURES MAY BE REQUIRED BY THE ENGINEER.
- GRAVEL ROADS, ACCESS DRIVES, PARKING AREAS OF SUFFICIENT WIDTH AND LENGTH, AND VEHICLE WASH DOWN FACILITIES IF NECESSARY, SHALL BE PROVIDED TO PREVENT SOIL FROM BEING TRACKED ONTO PUBLIC OR PRIVATE ROADWAYS. ANY SOIL REACHING A PUBLIC OR PRIVATE ROADWAY SHALL BE REMOVED BEFORE THE END OF EACH WORKDAY AND AS NEEDED.
- CLEANING OF VEHICLES AND EQUIPMENT, INCLUDING CONCRETE MIXERS, SHALL BE PERFORMED IN A MANNER TO REDUCE THE AMOUNT OF POLLUTANTS TRIBUTARY TO STORM SEWERS AND OPEN WATERS TO THE MAXIMUM EXTENT PRACTICAL. CONCRETE WASH AREAS SHALL NOT BE LOCATED WITHIN ANY SPECIAL MANAGEMENT AREAS.
- ALL NECESSARY MEASURES SHALL BE TAKEN TO CONTAIN ANY FUEL OR POLLUTION RUNOFF. LEAKING EQUIPMENT OR SUPPLIES SHALL BE IMMEDIATELY REPAIRED OR REMOVED FROM THE SITE.
- SEDIMENT COLLECTED DURING CONSTRUCTION BY THE VARIOUS TEMPORARY EROSION CONTROL SYSTEMS SHALL BE DISPOSED OF ON THE SITE ON A REGULAR BASIS. SEDIMENT SHALL BE REMOVED FROM EROSION CONTROL SYSTEMS WHEN THE HEIGHT OF THE SEDIMENT EXCEEDS ONE-HALF OF THE HEIGHT OF THE FILTER DEVICE.
- THE ENGINEER SHALL INSPECT EROSION CONTROL MEASURES PERIODICALLY AND WITHIN 24 HOURS OF ANY STORM EXCEEDING 1/2 INCH PRECIPITATION. DAMAGED AND INEFFECTIVE EROSION CONTROL MEASURES SHALL BE REPAIRED OR REPLACED WITHIN 72 HOURS. EROSION CONTROL SYSTEMS REPLACED DUE TO SEDIMENT LOADING WILL BE PAID FOR AT THE CONTRACT UNIT PRICE FOR THE APPLICABLE EROSION CONTROL ITEM.
- ALL SEDIMENT AND EROSION CONTROL MEASURES WILL BE PAID FOR IN ACCORDANCE WITH SECTION 280 OF THE STANDARD SPECIFICATIONS, EXCEPT WHERE OTHERWISE NOTED IN THE CONTRACT SPECIAL PROVISIONS.
- THE COST OF REPAIRING OR REMOVING SEDIMENT FROM EROSION CONTROL SYSTEMS SHALL BE INCLUDED IN THE CONTRACT UNIT PRICE FOR THE APPLICABLE EROSION CONTROL ITEM.
- ALL EROSION CONTROL MEASURES SHALL BE KEPT OPERATIONAL AND MAINTAINED CONTINUOUSLY THROUGHOUT THE PERIOD OF LAND DISTURBANCE UNTIL PERMANENT SEDIMENT AND EROSION CONTROL MEASURES ARE OPERATIONAL.
- STRAW OR HAY BALES SHALL NOT BE USED FOR INLET AND PIPE PROTECTION.

KANE COUNTY STANDARD EROSION CONTROL NOTES:

- UNLESS OTHERWISE INDICATED, ALL VEGETATIVE AND STRUCTURAL EROSION AND SEDIMENT CONTROL PRACTICES WILL BE CONSTRUCTED ACCORDING TO MINIMUM STANDARDS AND SPECIFICATIONS IN THE ILLINOIS URBAN MANUAL REVISED FEBRUARY 2002.
- THE KANE-DUPAGE SOIL AND WATER CONSERVATION DISTRICT (KDSWCD) MUST BE NOTIFIED ONE WEEK PRIOR TO THE PRE-CONSTRUCTION CONFERENCE, ONE WEEK PRIOR TO THE COMMENCEMENT OF LAND DISTURBING ACTIVITIES, AND ONE WEEK PRIOR TO THE FINAL INSPECTION.
- A COPY OF THE APPROVED EROSION AND SEDIMENT CONTROL PLAN SHALL BE MAINTAINED ON THE SITE AT ALL TIMES
- PRIOR TO COMMENCING LAND-DISTURBING ACTIVITIES IN AREAS OTHER THAN INDICATED ON THESE PLANS (INCLUDING BUT NOT LIMITED TO, ADDITIONAL PHASES OF DEVELOPMENT AND OFF-SITE BORROW OR WASTE AREAS) A SUPPLEMENTARY EROSION CONTROL PLAN SHALL BE SUBMITTED TO THE OWNER FOR REVIEW BY THE KDSWCD.
- THE CONTRACTOR IS RESPONSIBLE FOR INSTALLATION OF ANY ADDITIONAL EROSION CONTROL MEASURES NECESSARY TO PREVENT EROSION AND SEDIMENTATION AS DETERMINED BY THE KDSWCD.
- DURING DEWATERING OPERATIONS, WATER WILL BE PUMPED INTO SEDIMENT BASINS OR SILT TRAPS. DEWATERING DIRECTLY INTO FIELD TILES OR STORMWATER STRUCTURES IS PROHIBITED.
- IT IS THE RESPONSIBILITY OF THE LANDOWNER AND/OR GENERAL CONTRACTOR TO INFORM ANY SUB-CONTRACTORS(S) WHO MAY PERFORM WORK ON THIS PROJECT, OF THE REQUIREMENTS IN IMPLEMENTING AND MAINTAINING THESE EROSION CONTROL PLANS AND THE NATIONAL POLLUTANT DISCHARGE ELIMINATION SYSTEM (NPDES) PERMIT REQUIREMENTS SET FORTH BY THE EPA.



| OUTLET WITHOUT DITCH PROTECTIVE APRON DIMENSIONS AND ESTIMATED QUANTITIES | | | | | | |
|--|-------------------------|--------------|--------------------------|--------------------------------|--------------------------------|------------------------------------|
| | CULVERT SIZE D (inches) | RIPRAP CLASS | LENGTH OF APRON L (feet) | DEPTH OF RIPRAP APRON H (feet) | ESTIMATED RIPRAP QUANTITY (SY) | ESTIMATED GEOTEXTILE QUANTITY (SY) |
| WITH END SECTION | 18 | RR4 | 7 | 1.33 | 6 | 6 |
| | 24 | RR4 | 9 | 1.33 | 9 | 9 |
| | 30 | RR5 | 13.5 | 1.83 | 18 | 18 |
| | 36 | RR5 | 16 | 1.83 | 26 | 26 |
| | 42 | RR6 | 22 | 2.17 | 44 | 44 |
| | 48 | RR6 | 25 | 2.17 | 57 | 57 |

RIPRAP NOTES:

- Use for aprons serving culverts with slopes of less than 10%.
- Furnish Filter Fabric per section 282 of the standard specifications. 2' Turn downs not shown.
- Provide bedding stone (not shown) per section 281 of the standard specifications
- Excavation for placement of riprap will not be measured for payment.