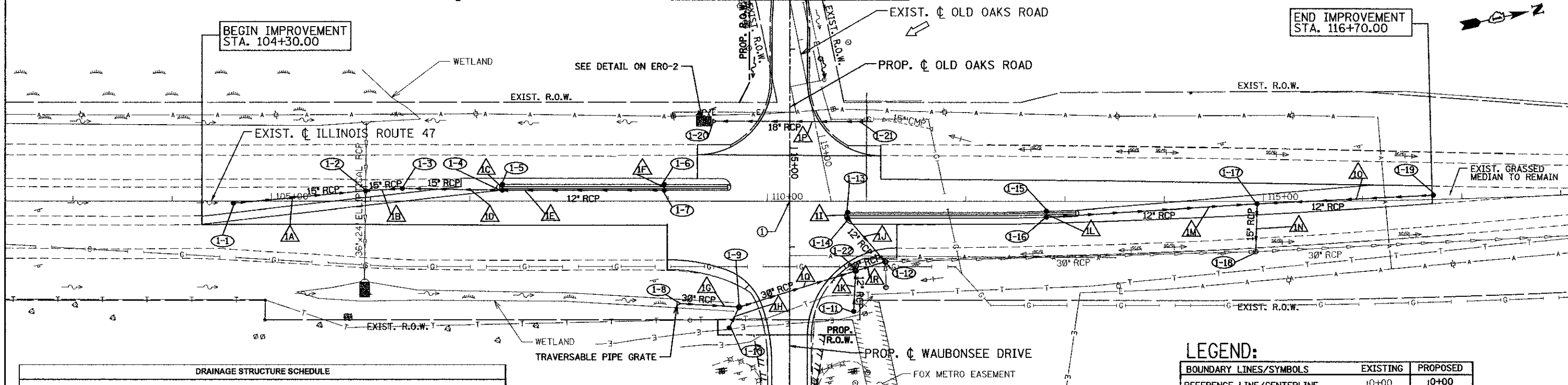


① WAUBONSEE DRIVE STA. 15+53.82 =
 ② ILLINOIS ROUTE 47 STA. 110+22.43

SEE SHEET DU-2 FOR CONTINUATION

END IMPROVEMENT
 STA. 116+70.00

BEGIN IMPROVEMENT
 STA. 104+30.00



DRAINAGE STRUCTURE SCHEDULE

STRUCTURE NO.	STRUCTURE TYPE	STATION	OFFSET	RIM ELEV.	INVERT (N)	INVERT (S)	INVERT (W)	INVERT (E)
1-1	CB TA 4 DIA 18G	104+61.79	2.04	RT 703.53	700.80			
1-2	CB TA 5 DIA 18G	105+95.02	10.57	LT 704.86	700.17	700.17		
1-3	CB TA 4 DIA 18G	106+31.88	12.84	LT 705.14	701.02	700.29		
1-4	CB TA 4 DIA 111V F&G	107+33.00	11.00	LT 705.09	701.34	701.34	701.98	
1-5	CB TA 4 DIA 124F&G	107+33.00	17.00	LT 705.73				702.01
1-6	CB TA 4 DIA 124F&G	108+95.95	17.00	LT 706.24				702.92
1-7	CB TA 4 DIA 111V F&G	108+95.95	11.00	LT 706.00		702.06	702.89	
1-8	END SECTIONS 30"	109+12.46	103.41	RT 700.14	700.14	700.14		698.38
1-9	MAN TA 5 DIA 11F CL	109+71.56	106.93	RT 702.86	698.11	698.11		698.38
1-10	CB TA 4 DIA 18G	109+61.60	128.11	RT 702.71		698.49		
1-11	CB TA 4 DIA 18G	110+77.24	111.23	RT 702.73		698.29		698.67
1-12	MAN TA 5 DIA 18G	111+16.85	60.87	RT 706.01	697.91	697.91		699.67
1-13	CB TA 4 DIA 111V F&G	110+81.00	11.00	RT 706.42			699.93	699.96
1-14	CB TA 4 DIA 124F&G	110+81.00	17.00	RT 706.67			699.93	698.15
1-15	CB TA 4 DIA 111V F&G	112+81.30	9.93	RT 706.97				700.15
1-16	CB TA 4 DIA 124F&G	112+81.30	15.93	RT 707.38	700.12		700.12	
1-17	CB TA 4 DIA 124F&G	114+93.85	2.38	RT 707.28	699.20	699.20		698.95
1-18	EXISTING STRUCTURE	114+92.31	50.51	RT 708.41	697.54	697.54	698.79	
1-19	CB TA 4 DIA 18G	116+71.53	4.30	LT 707.75	700.14			
1-20	END SECTIONS 18"	109+48.47	80.98	LT 702.39	702.39		704.20	
1-21	END SECTIONS 18"	110+82.36	80.50	LT 704.20				
1-22	MAN TA 5 DIA 11F CL	110+89.09	70.22	RT 705.35	697.99	697.99		698.12

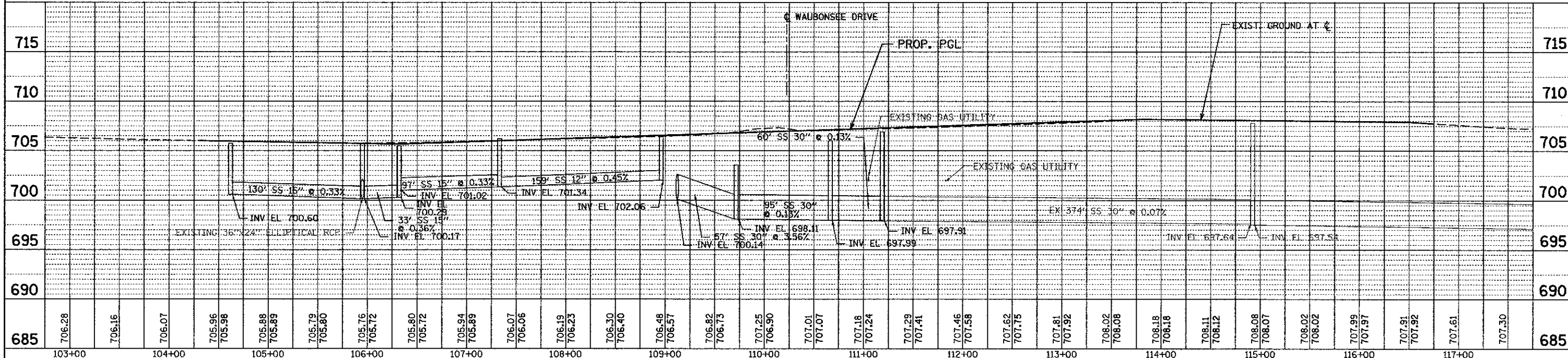
SEE SHEET DU-2 FOR CONTINUATION

STORM SEWER SCHEDULE

PIPE NO.	FROM	TO	LENGTH (FT)	DIA (IN)	TYPE	SLOPE (%)
1A	1-1	1-2	130	15	STORM SEW CL A 2 15	0.33
1B	1-3	1-2	33	15	STORM SEW CL A 1 15	0.36
1C	1-5	1-4	1	12	STORM SEW CL A 1 12	2.64
1D	1-4	1-3	97	15	STORM SEW CL A 1 15	0.33
1E	1-7	1-4	189	12	STORM SEW CL A 1 12	0.45
1F	1-8	1-7	2	12	STORM SEW CL A 1 12	1.32
1G	1-8	1-9	57	30	STORM SEW CL A 1 30	3.56
1H	1-10	1-9	20	12	STORM SEW CL A 2 12	0.55
1I	1-13	1-14	2	12	STORM SEW CL A 2 12	1.32
1J	1-14	1-12	54	12	STORM SEW CL A 2 12	0.44
1K	1-11	1-22	38	12	STORM SEW CL A 2 12	0.45
1L	1-15	1-18	2	12	STORM SEW CL A 2 12	1.32
1M	1-16	1-17	209	12	STORM SEW CL A 2 12	0.44
1N	1-17	1-18	44	15	STORM SEW CL A 2 15	0.36
1O	1-19	1-17	174	12	STORM SEW CL A 2 12	0.54
1P	1-21	1-20	144	18	STORM SEW CL A 1 18	1.26
1Q	1-9	1-22	124	30	STORM SEW CL A 2 30	0.10
1R	1-22	1-12	32	30	STORM SEW CL A 2 30	0.25

LEGEND:

BOUNDARY LINES/SYMBOLS	EXISTING	PROPOSED
REFERENCE LINE/CENTERLINE AND STATIONING	- 0+00-	- 0+00-
STORM SEWER	— — —	— — —
CATCH BASIN	○	●
MANHOLE	○	●
FLARED END SECTION	○	○
OPEN LID MANHOLE/INLET	○	○
SWALE	— — —	— — —
DITCH	— — —	— — —
WETLAND	— — —	— — —
RIPRAP	— — —	— — —
RIGHT OF WAY LINE	— — —	— — —
PERMANENT EASEMENT	— — —	— — —



DATE	
BY	
PLAN	
NO.	
DATE	
BY	
PROFILE	
NO.	

DATE	
BY	
PROFILE	
NO.	

PATRICK ENGINEERING INC. 4670 VARSITY DRIVE LISLE, IL 60532 patrickengineering.com	USER NAME = mpine@lisle.il	DESIGNED - KLF	REVISED - 4/16/2013	STATE OF ILLINOIS DEPARTMENT OF TRANSPORTATION	ILLINOIS ROUTE 47 AT WAUBONSEE DRIVE DRAINAGE PLAN AND PROFILE		F.A.P. RTE. 326	SECTION 11-00001-00-CH	COUNTY KANE	TOTAL SHEETS 55	SHEET NO. 15	
	PLOT CONFIG = PDFGray_Large.plt	DRAWN - KLF	REVISED -		SCALE: 1"=50'	SHEET NO. DU 1 OF 2	STA. TO STA.	FED. ROAD DIST. NO.	ILLINOIS FED. AID PROJECT	CONTRACT NO. 63829		
	PLOT SCALE = 1:50	CHECKED - EYC	REVISED -									
	PLOT DATE = 5/7/2013 4:04:19 PM	DATE - 3/25/2013	REVISED -									

Q:\WAUBONSEE\21258.013\0-bwng\PROJ\Shets\Drawn\5.DRA_01_IL_471.dgn