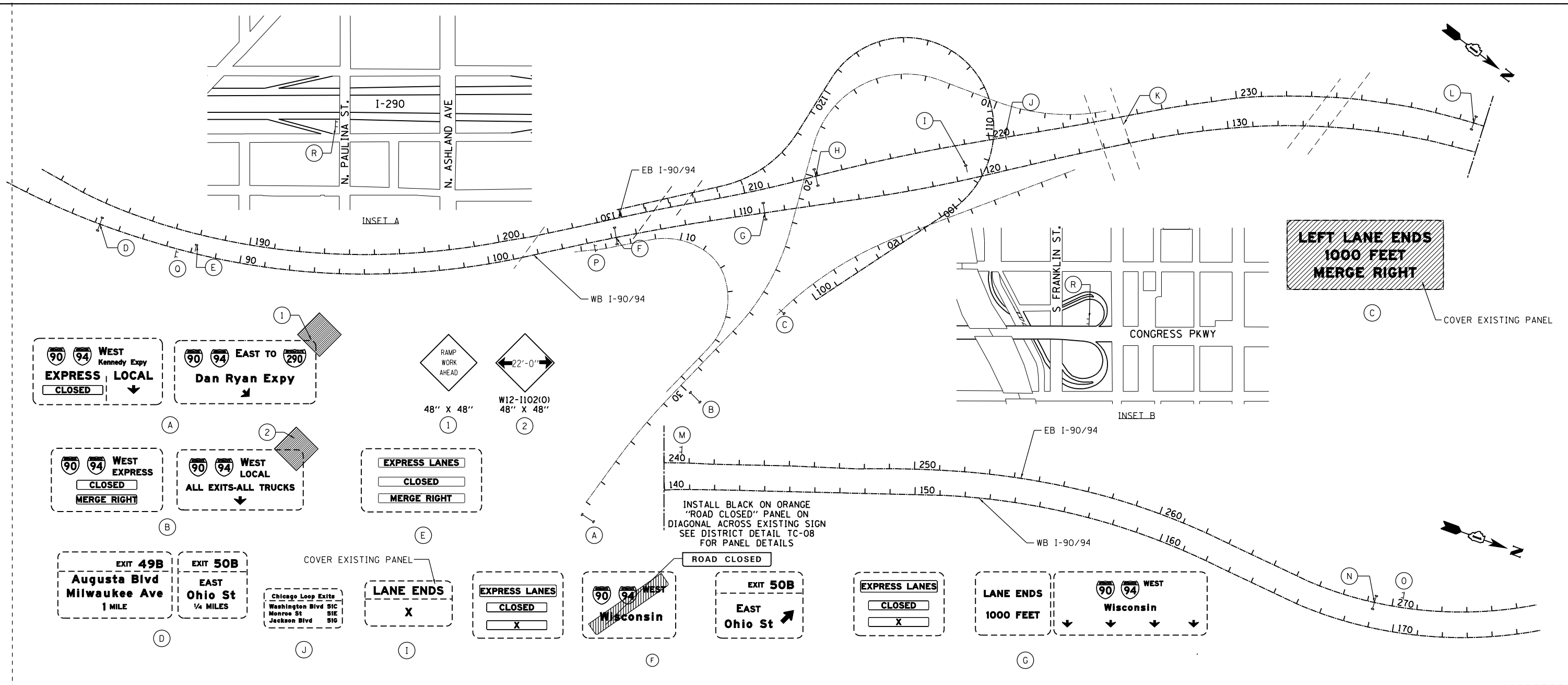


FILE NAME = \\collinsengr.com\1\pawarden\1\pawarden\DDCS\Y2000 - 134.ctb Ohio Street\I-90\Stage II\Substage 2C\stage2c.dgn



**LEFT LANE ENDS  
1000 FEET  
MERGE RIGHT**

COVER EXISTING PANEL

INSTALL BLACK ON ORANGE  
"ROAD CLOSED" PANEL ON  
DIAGONAL ACROSS EXISTING SIGN  
SEE DISTRICT DETAIL TC-08  
FOR PANEL DETAILS

**WEST Kennedy Expy**  
**EXPRESS LOCAL**  
CLOSED

**EAST TO Dan Ryan Expy**

**WEST EXPRESS**  
CLOSED  
MERGE RIGHT

**WEST LOCAL**  
ALL EXITS-ALL TRUCKS

**EXPRESS LANES**  
CLOSED  
MERGE RIGHT

**EXIT 49B**  
**Augusta Blvd**  
**Milwaukee Ave**  
1 MILE

**EXIT 50B**  
**EAST Ohio St**  
1/4 MILES

Chicago Loop Exits  
Washington Blvd 51C  
Monroe St 51E  
Jackson Blvd 51G

**LANE ENDS**  
X

**EXPRESS LANES**  
CLOSED  
X

**WEST Wisconsin**

**EXIT 50B**  
**EAST Ohio St**

**EXPRESS LANES**  
CLOSED  
X

**LANE ENDS**  
1000 FEET

**WEST Wisconsin**

**EXIT 51D**  
**WEST Madison St**  
3/4 MILE

**EXIT 51C**  
**EAST Washington Blvd**  
1/2 MILE

**EXIT 51B**  
**WEST Randolph St**  
1/4 MILE

**EXIT 50B**  
**EAST Ohio St**  
1 MILE

**EXIT 50A**  
**Ogden Ave**  
3/4 MILE

**EXIT 49A**  
**Division St**  
1200 N

**DO NOT ENTER**  
X

**EAST Ohio St**  
EXIT ONLY

**EAST Dan Ryan Expy**  
**Indiana**

**EXITS 51H-I**  
**West Suburbs Chicago Loop**  
EXIT ONLY

**EXIT 50B**  
**EAST Ohio St**  
800 N

**EXITS 51H-I**  
**West Suburbs Chicago Loop**  
1 1/2 MILES

**EXIT 50B**  
**EAST Ohio St**  
1/4 MILES

**EXIT 50A**  
**Ogden Ave**  
1200 W

**LEGEND:**

- EXISTING SIGN

- PROPOSED SIGN

- OVERHEAD OR CANTILEVER SIGN

- GROUND MOUNTED SIGN

NOTES:  
1. CONTRACTOR SHALL FIELD VERIFY EXISTING SIGN PANEL DIMENSIONS BEFORE ORDERING AND FABRICATING TEMPORARY SIGN PANELS AND OVERLAYS.

**COLLINS ENGINEERS**

USER NAME = rge11	DESIGNED -	REVISED -
PLOT SCALE = 400.000000' / in.	DRAWN -	REVISED -
PLOT DATE = 3/25/2013	CHECKED -	REVISED -
	DATE -	REVISED -

**STATE OF ILLINOIS  
DEPARTMENT OF TRANSPORTATION**

**TEMPORARY SIGNING PLAN  
STAGE II - SUBSTAGE 2C**

SCALE: SHEET NO. OF SHEETS STA. TO STA.

F.A.I. RT. 90/94	SECTION 0303-474HB-R	COUNTY COOK	TOTAL SHEETS 368	SHEET NO. 89
CONTRACT NO. 60F63				
FED. ROAD DIST. NO. 1 ILLINOIS FED. AID PROJECT				