

INDEX OF SHEETS

06-14-13 LETTING ITEM 194

STATE OF ILLINOIS

DEPARTMENT OF TRANSPORTATION

DIVISION OF HIGHWAYS

IDOT / IDNR STATEWIDE

LASALLE LAKE STATE FISH & WILDLIFE AREA

SITE IMPROVEMENTS
SECTION PARK ROADS

LASALLE COUNTY

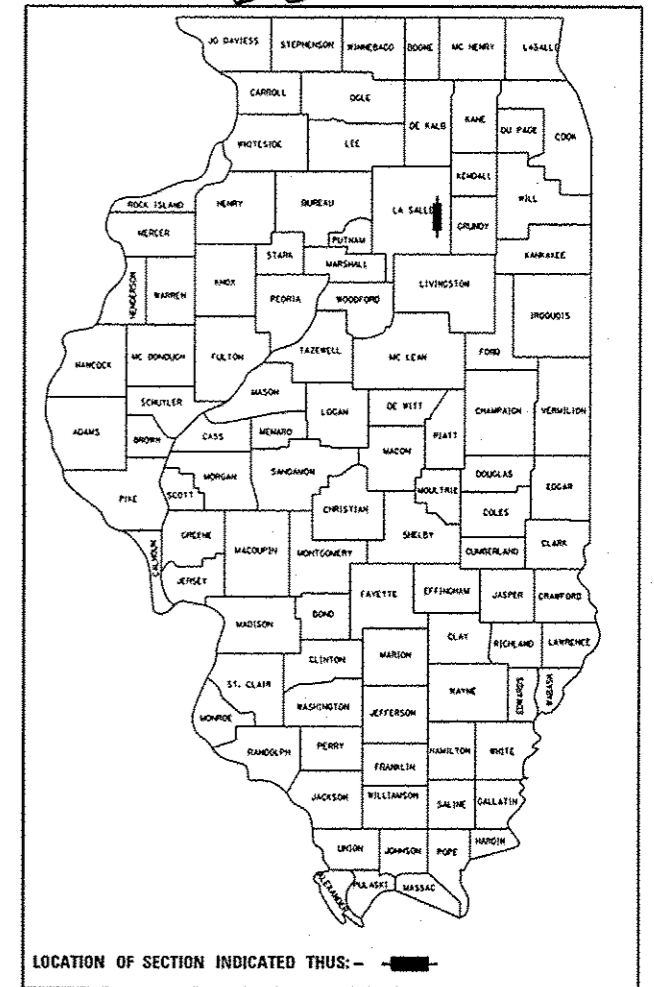
SECTION: LASALLE LAKE STATE PARK

IDNR PROJECT NO. 1-13-002

C-30-007-13

F.A.P. RTE.	SECTION	COUNTY	TOTAL SHEETS	SHEET NO.
N/A	PARK ROADS	LASALLE	20	1
FED. ROAD DIST. NO.	ILLINOIS	CONTRACT NO. 46254		
P-30-001-12				

D-3



LOCATION OF SECTION INDICATED THUS: -

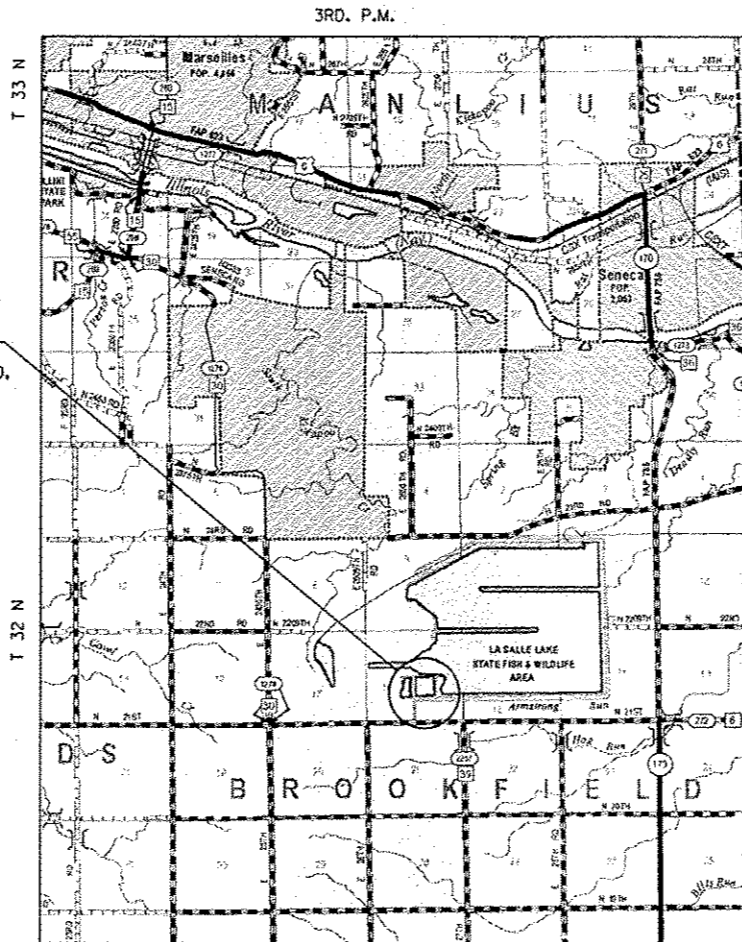
- 1 COVER SHEET
- 2 GENERAL NOTES & QUANTITY SCHEDULES
- 3-4 SUMMARY OF QUANTITIES
- 5 TYPICAL SECTIONS & PAVEMENT STRUCTURE DETAILS
- 6 SITE PLAN
- 7-12 ENTRANCE ROAD PLAN & PROFILES
- 13-15 PARKING LOT GRADING & STAKING PLAN SHEETS
- 16 DRAINAGE PLAN / EROSION CONTROL DETAILS
- 17-19 PARKING LOT PAVEMENT MARKING & SIGNING PLAN / DETAILS
- 20 MISCELLANEOUS DETAILS

HIGHWAY STANDARDS

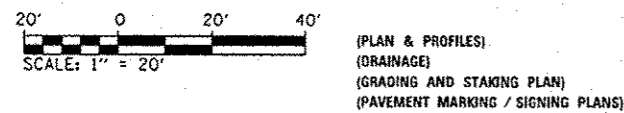
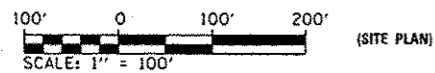
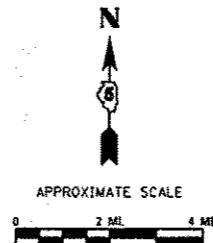
- 000001-06 STANDARD SYMBOLS, ABBREVIATIONS AND PATTERNS
- 001006 DECIMAL OF AN INCH AND OF A FOOT
- 280001-07 TEMPORARY EROSION CONTROL SYSTEMS
- 542301-03 PRECAST REINFORCED CONCRETE FLARED END SECTION
- 701001-02 OFF-RD OPERATIONS, 2L, 2W, MORE THAN 15' AWAY
- 701006-04 OFF-RD OPERATIONS, 2L, 2W, 15' TO 24" FROM PAVEMENT EDGE
- 701011-03 OFF-RD MOVING OPERATIONS, 2L, 2W, DAY ONLY
- 701901-02 TRAFFIC CONTROL DEVICES
- 720001-01 SIGN PANEL MOUNTING DETAILS
- 720006-03 SIGN PANEL ERECTION DETAILS
- 728001-01 TELESCOPING STEEL SIGN SUPPORT
- 780001-03 TYPICAL PAVEMENT MARKINGS
- BLR 21-9 TYPICAL APPLICATION OF TRAFFIC CONTROL DEVICES FOR CONSTRUCTION ON RURAL LOCAL HIGHWAYS
- BLR 22-7 TYPICAL APPLICATION OF TRAFFIC CONTROL DEVICES FOR CONSTRUCTION ON RURAL LOCAL HIGHWAYS

PROJECT LOCATION

THE PROPOSED PROJECT CONSISTS OF ENTRANCE ROAD, PARKING LOT & SITE IMPROVEMENTS AT THE IDNR LASALLE LAKE STATE FISH AND WILDLIFE AREA INCLUDING ROADWAY AND PARKING AREA EXPANSION, BITUMINOUS OVERLAYS, CULVERT AND DRAINAGE IMPROVEMENTS, PAVEMENT MARKING, SIGNING AND LANDSCAPING.



LOCATION MAP



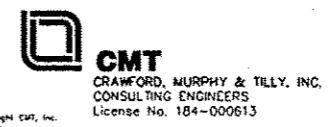
FULL SIZE PLANS HAVE BEEN PREPARED USING STANDARD ENGINEERING SCALES. REDUCED SIZED PLANS WILL NOT CONFORM TO STANDARD SCALES. IN MAKING MEASUREMENTS ON REDUCED PLANS, THE ABOVE SCALES MAY BE USED.

J.U.L.I.E.
JOINT UTILITY LOCATION INFORMATION FOR EXCAVATION
1-800-892-0123
OR 811

PROJECT ENGINEER: LANCE KIDD (217) 785-2933
CONTRACT NO. 46254



SIGNATURE: Matthew Overley
DATE SIGNED: 2/8/2013
LICENSE EXPIRATION DATE: 11/30/2013



STATE OF ILLINOIS
DEPARTMENT OF TRANSPORTATION
DIVISION OF HIGHWAYS

SUBMITTED May 10 2013
William R. Frey, Jr.
DEPUTY DIRECTOR OF HIGHWAYS, REGION ENGINEER

May 10 2013
John D. Baranzelli, PE, Jr.
ENGINEER OF DESIGN AND ENVIRONMENT

May 10 2013
Omair Osman, PE, Jr.
DIRECTOR OF HIGHWAYS, CHIEF ENGINEER

PRINTED BY THE AUTHORITY
OF THE STATE OF ILLINOIS

PAVING

STATION / LOCATION	EARTH EXCAVATION (CU YD)	PAVEMENT REMOVAL (SQ YD)	AGGREGATE BASE COURSE, TYP A (TON)	PREPARATION OF BASE (SQ YD)	BITUMINOUS MATERIALS (PRIME COAT) (GALLON)	A-3 SURFACE TREATMENT				HOT-MIX ASPHALT BINDER COURSE, IL-19.0, N50 (TON)	HOT-MIX ASPHALT SURFACE COURSE, MIX "C", N50 (TON)
						BITUMINOUS MATERIALS (PRIME COAT) (GALLON)	BITUMINOUS MATERIALS (COVER AND SEAL COATS) (GALLON)	COVER COAT AGGREGATE (TON)	SEAL COAT AGGREGATE (TON)		
N-S ENTRANCE ROAD											
20+66.16 - 25+00.00			364.9	1,455		509.3	1,527.9	29.2	14.6		
25+00.00 - 31+00.00			366.8	2,024		708.4	2,125.2	40.4	20.2		
31+00.00 - 34+46.07			234.9	1,109		388.2	1,164.6	22.2	11.1		
E-W ENTRANCE ROAD											
0+00.00 - 5+00.00			242.1	1,142		399.7	1,199.1	22.8	11.4		
5+00.00 - 11+00.00			302.9	1,493		522.6	1,567.8	29.8	14.9		
11+00.00 - 12+05.00			65.5	257		90.0	270.0	5.2	2.6		
MAIN PARKING LOT	249	188	2,962.3	12,454	5,355.2					1,569.2	1,046.2
SECONDARY PARKING LOT	10		590.5	2,844	1,222.9					358.3	238.9
TOTALS	259	188	5,129.9	22,778	6,578.1	2,618.2	7,854.6	149.6	74.8	1,927.5	1,285.1

GENERAL NOTES:

- UNLESS MODIFIED BY THE PROJECT SPECIFICATIONS, ALL WORK SHALL BE DONE IN ACCORDANCE WITH THE "STANDARD SPECIFICATIONS FOR ROAD AND BRIDGE CONSTRUCTION", ADOPTED BY THE ILLINOIS DEPARTMENT OF TRANSPORTATION ON JAN. 1, 2012; THE LATEST ADDITION OF THE "MANUAL ON UNIFORM TRAFFIC CONTROL DEVICES FOR STREETS AND HIGHWAYS"; AND THE "SUPPLEMENTAL SPECIFICATIONS AND RECURRING SPECIAL PROVISIONS" ADOPTED JAN. 1, 2013.
- THE LOCATIONS, SIZE, MATERIAL, DESCRIPTION OR TYPE OF EXISTING UNDERGROUND UTILITIES INDICATED ON THE PLANS ARE APPROXIMATE LOCATIONS BASED ON IN PART, INFORMATION SUPPLIED BY OTHERS AND IS NOT REPRESENTED AS BEING ACCURATE, SUFFICIENT OR COMPLETE. PRIOR TO THE START OF CONSTRUCTION, THE CONTRACTOR SHALL ARRANGE TO HAVE ALL UTILITIES INCLUDING WATER, GAS, ELECTRIC, STORM SEWER, SANITARY SEWER, TELEPHONE, AND CABLE T.V. LOCATED AND SUITABLY MARKED. SHOULD A UTILITY BE IN CONFLICT WITH THE PROPOSED CONSTRUCTION, THE OWNER'S REPRESENTATIVE SHALL BE NOTIFIED AT ONCE. THE CONTRACTOR SHALL AT MINIMUM CONTACT J.U.L.I.E. AT 1-800-892-0123 FOR UTILITY LOCATING.
- THE CONTRACTOR SHALL TAKE REASONABLE PRECAUTIONS TO PROTECT PUBLIC AND PRIVATE PROPERTY. IF AT ANY TIME, HE/SHE DAMAGES OR DESTROYS PUBLIC OR PRIVATE PROPERTY, THE CONTRACTOR SHALL, AT HIS OWN EXPENSE, RESTORE SUCH PROPERTY TO A CONDITION EQUAL TO THAT EXISTING BEFORE SUCH DAMAGE. PUBLIC ROADWAYS, PRIVATE ENTRANCES AND EMPLOYEE ENTRANCES SHALL REMAIN ACCESSIBLE AND FREE OF CONSTRUCTION DEBRIS. ANY MATERIAL TO BE STAGED OR STOCKPILED SHALL BE COORDINATED WITH THE OWNER'S REPRESENTATIVE.
- WHERE SECTION OR SUB-SECTION CORNERS OR PROPERTY MARKERS ARE ENCOUNTERED THE ENGINEER SHALL BE NOTIFIED BEFORE SUCH MARKERS ARE REMOVED. THE CONTRACTOR SHALL PROTECT AND PRESERVE ALL PROPERTY MARKERS UNTIL AN AUTHORIZED SURVEYOR HAS WITNESSED OR REFERENCED THEIR LOCATION.
- PLAN DIMENSIONS AND DETAILS RELATIVE TO EXISTING PLANS ARE SUBJECT TO NOMINAL CONSTRUCTION VARIATIONS. THE CONTRACTOR SHALL FIELD VERIFY EXISTING DIMENSIONS AND DETAILS AFFECTING NEW CONSTRUCTION AND MAKE NECESSARY APPROVED ADJUSTMENTS PRIOR TO CONSTRUCTION OR ORDERING OF MATERIALS. SUCH VARIATIONS SHALL NOT BE CAUSE FOR ADDITIONAL COMPENSATION FOR A CHANGE IN SCOPE OF WORK; HOWEVER, THE CONTRACTOR WILL BE PAID FOR THE QUANTITY ACTUALLY FURNISHED AT THE UNIT PRICE BID FOR THE WORK.
- GRADING SHALL BE DONE BY HAND AROUND LIGHT POLES, UTILITY POLES, SIGN POSTS, SHRUBS, TREES OR OTHER NATURAL OR MAN-MADE OBJECTS WHERE SHALLOW FILLS OR CUTS ARE ADJACENT TO THE ITEMS.
- THE CONTRACTOR SHALL NOTIFY THE RESIDENT ENGINEER AND THE ILLINOIS DEPARTMENT OF NATURAL RESOURCES SITE SUPERINTENDENT TED LOVE AT 815-357-1608/815-795-2448/815-795-4171 AT LEAST TWO WEEKS IN ADVANCE OF MOVING EQUIPMENT, MATERIALS, OR FORCES TO THE SITE.
- TREE REMOVALS SHOWN IN THE PLANS SHALL BE MARKED IN THE FIELD AND VERIFIED BY THE ENGINEER PRIOR TO REMOVAL BY THE CONTRACTOR. ALL REMAINING TREES SHALL BE PROTECTED BY THE CONTRACTOR FROM DAMAGE DUE TO HIS OPERATIONS.
- EXCESS EXCAVATION MAY BE DISPOSED OF WITHIN PARK BOUNDARIES AND A LOCATION APPROVED BY THE ENGINEER. THE CONTRACTOR SHALL SPECIFY TO THE ENGINEER, IN WRITING, HOW THE LANDSCAPE RESTORATION WILL BE ACCOMPLISHED. PLACEMENT OF FILL IN SUCH AREAS SHALL NOT COMMENCE UNTIL THE CONTRACTOR'S LANDSCAPE RESTORATION PLAN IS APPROVED BY THE ENGINEER AS STATED IN ARTICLE 202.03 OF THE STANDARD SPECIFICATIONS.
- SEEDING SHALL BE DONE ON ALL AREAS THAT ARE DISTURBED BY CONSTRUCTION OPERATIONS AS DIRECTED BY THE ENGINEER. SEEDING SHALL BE PAID FOR ONLY WITHIN THE PROPOSED CONSTRUCTION LIMITS. ALL AREAS DISTURBED BY THE CONTRACTOR OUTSIDE THE PROPOSED CONSTRUCTION LIMITS SHALL BE SEED, AS DIRECTED BY THE ENGINEER, AT THE CONTRACTOR'S EXPENSE.
- THE FOLLOWING RATES OF APPLICATION HAVE BEEN USED IN CALCULATING PLAN QUANTITIES:

GRANULAR MATERIALS	2.05 TONS / CU YD
BITUMINOUS SURFACE TREATMENTS:	
PRIME COAT	0.35 GAL / SQ YD
COVER & SEAL COAT	0.35 GAL / SQ YD
COVER COAT AGGREGATE	20 LB / SQ YD
SEAL COAT AGGREGATE	20 LB / SQ YD
HOT MIX ASPHALT PAVEMENT:	112 LBS/SY/IN
BITUMINOUS MATERIALS:	
PRIME COAT-ON PAVEMENT:	0.08 GAL/SY
PRIME COAT-ON AGGREGATE:	0.35 GAL/SY
- BARRICADES: THE CONTRACTOR SHALL PROVIDE AND INSTALL TWO (2) WEIGHTED SAND BAGS ON EACH TYPE I OR TYPE II BARRICADE USED - ONE (1) WEIGHTED SAND BAG ACROSS EACH BOTTOM RAIL.

PLANT LIST

TYPE	BOTANICAL NAME	COMMON NAME	SIZE	QUANTITY
SHADE TREE	ACER RUBRUM	RED MAPLE	3" BB	3
SHRUB	RHUS COPALLINA VAR LATIFOLIA MORTON	PRAIRIE FLAME SHINNING SUMAC	2' HEIGHT	6
SHRUB	JUNIPERUS HORIZONTALIS WILTONII	BLUE RUG JUNIPER	18" WIDTH	6

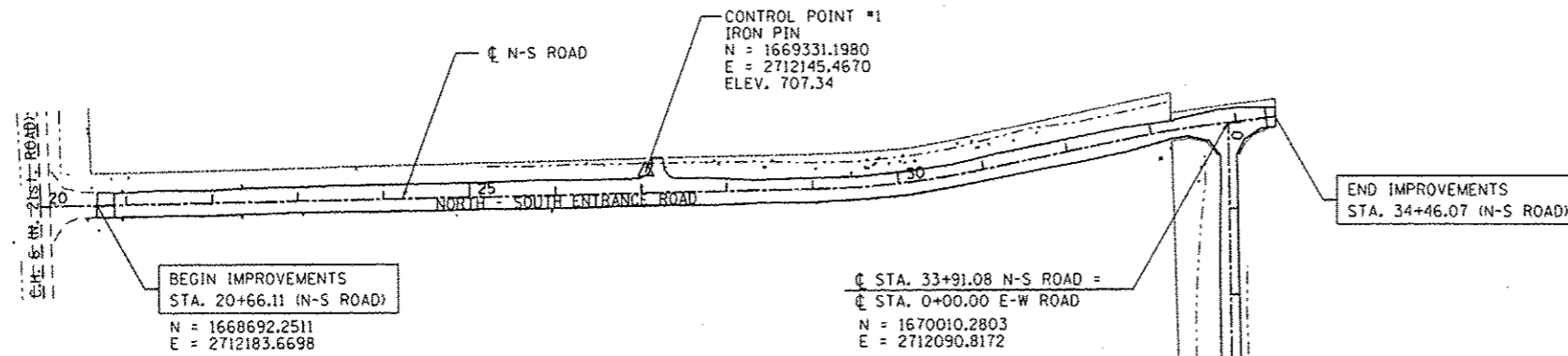
100% STATE

SUMMARY OF QUANTITIES		CONSTRUCTION CODE	
		0005	
CODE NO.	ITEM DESCRIPTION	UNIT	TOTAL QUANTITY
20100110	TREE REMOVAL (6 TO 15 UNITS DIAMETER)	UNIT	20
20200100	EARTH EXCAVATION	CU YD	259
21400100	GRADING AND SHAPING DITCHES	FOOT	635
28000305	TEMPORARY DITCH CHECKS	FOOT	40
28000400	PERIMETER EROSION BARRIER	FOOT	130
28000500	INLET AND PIPE PROTECTION	EACH	5
35100100	AGGREGATE BASE COURSE, TYPE A	TON	5,129.9
35800100	PREPARATION OF BASE	SQ YD	22,778
40300100	BITUMINOUS MATERIALS (PRIME COAT)	GALLON	2,618.2
40300300	BITUMINOUS MATERIALS (COVER AND SEAL COATS)	GALLON	7,854.6
40300500	COVER COAT AGGREGATE	TON	149.6
40300600	SEAL COAT AGGREGATE	TON	74.8
40600100	BITUMINOUS MATERIALS (PRIME COAT)	GALLON	6,578.1
40603080	HOT-MIX ASPHALT BINDER COURSE, IL-19.0, N50	TON	1,927.5

100% STATE

SUMMARY OF QUANTITIES		CONSTRUCTION CODE	
		0005	
CODE NO.	ITEM DESCRIPTION	UNIT	TOTAL QUANTITY
40603310	HOT-MIX ASPHALT SURFACE COURSE, MIX "C", N50	TON	1,285.1
42400300	PORTLAND CEMENT CONCRETE SIDEWALK 6 INCH	SQ FT	142
44000100	PAVEMENT REMOVAL	SQ YD	188
50105220	PIPE CULVERT REMOVAL	FOOT	43
542A0220	PIPE CULVERTS, CLASS A, TYPE 1 15"	FOOT	30
54213660	PRECAST REINFORCED CONCRETE FLARED END SECTIONS 15"	EACH	2
67000400	ENGINEER'S FIELD OFFICE, TYPE A	CAL MO	4
67100100	MOBILIZATION	L SUM	1
* 72000100	SIGN PANEL - TYPE 1	SQ FT	81.8
* 72400310	REMOVE SIGN PANEL - TYPE 1	SQ FT	76.5
* 72800100	TELESCOPING STEEL SIGN SUPPORT	FOOT	98
* 73000100	WOOD SIGN SUPPORT	FOOT	412
* 78001100	PAINT PAVEMENT MARKING - LETTERS AND SYMBOLS	SQ FT	18.4
* 78001110	PAINT PAVEMENT MARKING - LINE 4"	FOOT	8,960

*Specialty Items

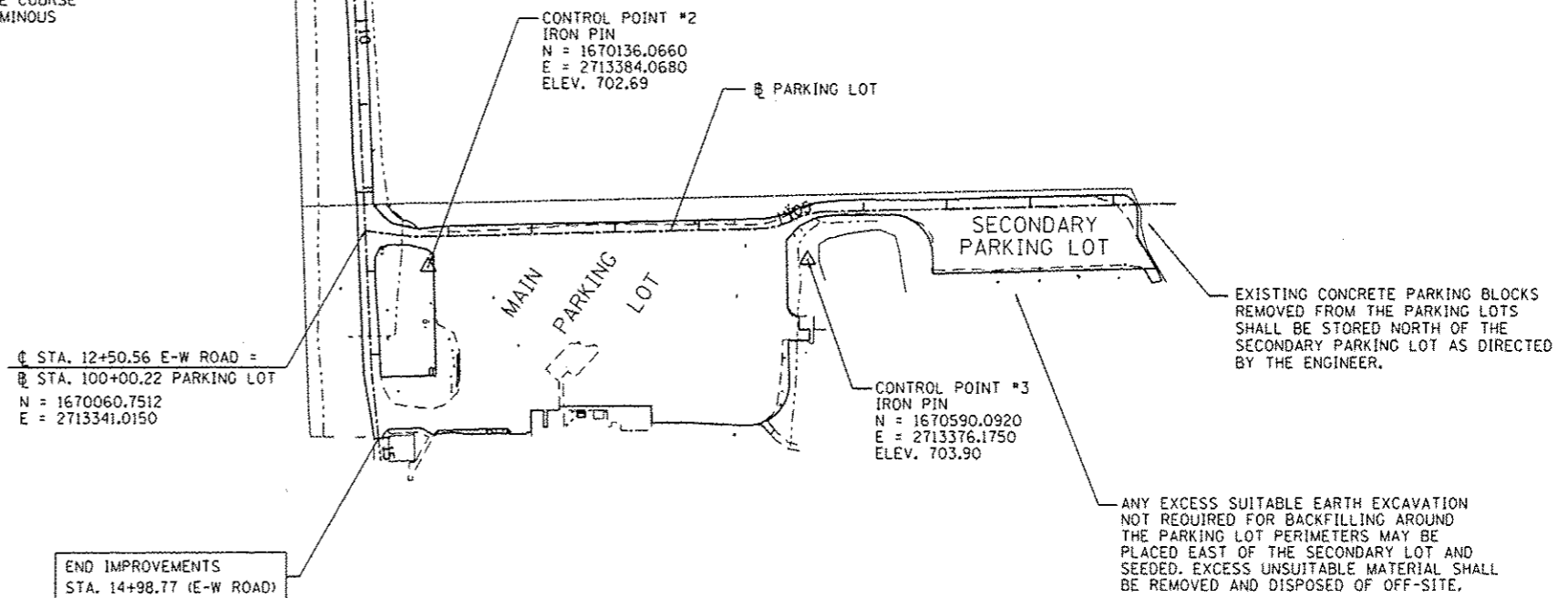


BENCHMARK LOCATIONS

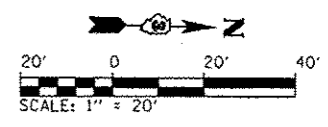
- BM 1
CHISELED "D" ON THE TOP AND CENTER OF THE OLD BOAT RAMP OR THE SOUTH RAMP.
ELEV. 701.87
- BM 2
CHISELED "X" ON THE NORTHWEST BOLT OF THE NORTHEAST RAILROAD CROSSING SIGNAL LOCATED WEST OF LASALLE LAKE ENTRANCE ROAD.
ELEV. 709.73

CONSTRUCTION SEQUENCE AND TRAFFIC CONTROL

1. IT IS ANTICIPATED THAT THE MAJORITY OF THE WORK SHALL BE COMPLETED UNDER TRAFFIC WHILE MAINTAINING ACCESS TO LASALLE LAKE FACILITIES. THE CONTRACTOR MAY REQUEST A ONE TO TWO WEEK FULL CLOSURE OF THE PARK SITE BETWEEN LATE JUNE AND THE MIDDLE OF AUGUST FOR FINAL GRADING AND PAVING OPERATIONS. THIS SHALL BE COORDINATED WITH IDOT & IDNR AT LEAST THREE WEEKS IN ADVANCE OF ANY CLOSURE.
2. TRAFFIC CONTROL SHALL BE PROVIDED AT ALL TIMES IN ACCORDANCE WITH THE IDOT HIGHWAY STANDARDS, THE STANDARD SPECIFICATIONS AND THE CONTRACT SPECIAL PROVISIONS.
3. THE EXISTING AGGREGATE SURFACE SHALL BE PREPARED AND THE ADDITIONAL AGGREGATE BASE COURSE FURNISHED AND PLACED ON THE NORTH-SOUTH AND EAST-WEST ENTRANCE ROAD PRIOR TO COMPLETING WORK ON THE PARKING LOTS TO ALLOW TIME FOR THE AGGREGATE BASE COURSE TO DRY AND BE COMPACTED BY CONSTRUCTION TRAFFIC PRIOR TO RECEIVING THE BITUMINOUS SURFACE TREATMENT.

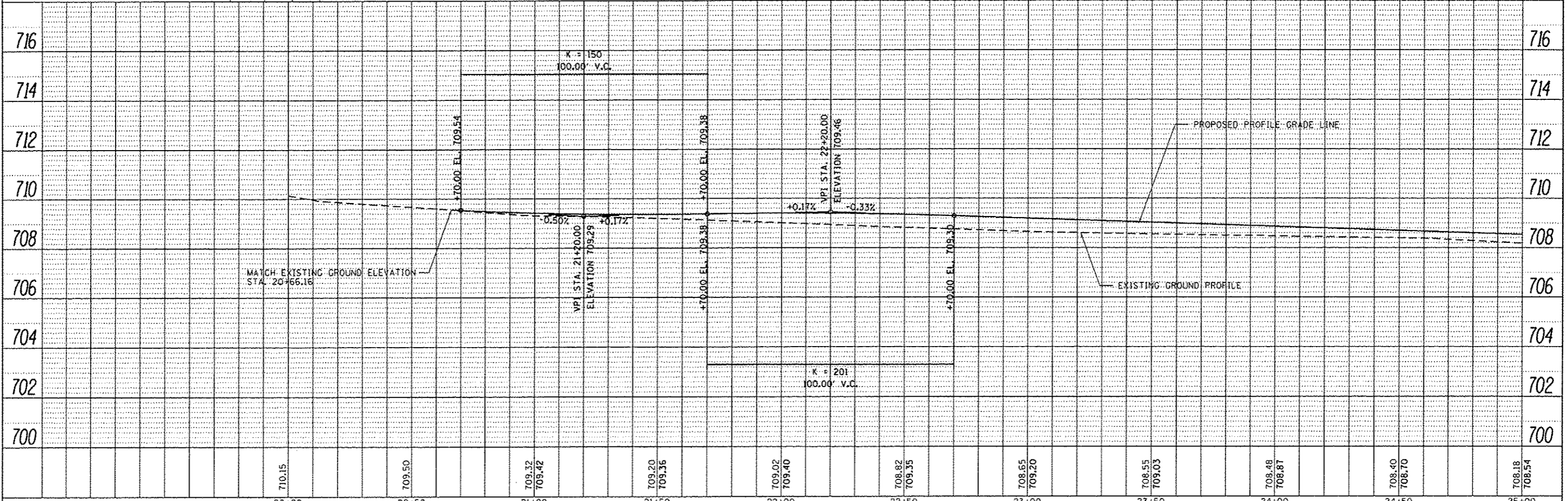
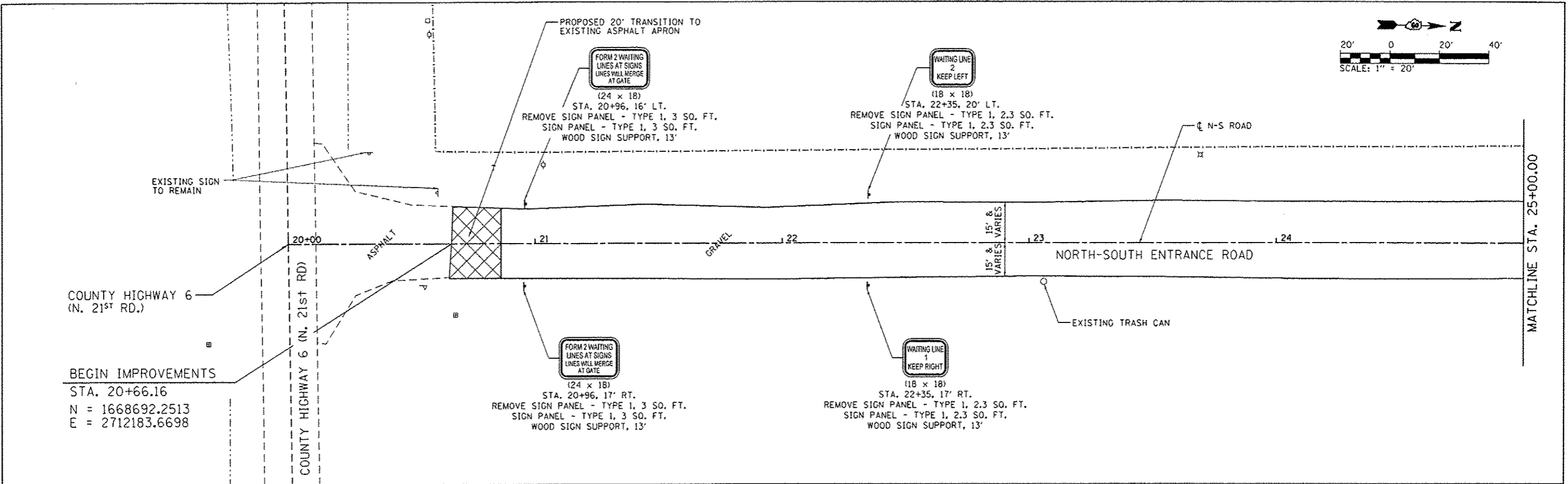


FILE NAME =	USER NAME = Matt Overbay	DESIGNED - MJO	REVISED -	STATE OF ILLINOIS DEPARTMENT OF TRANSPORTATION	SITE PLAN IDNR LASALLE LAKE STATE FISH & WILDLIFE AREA			F.A. RTE.	SECTION	COUNTY	TOTAL SHEETS	SHEET NO.
L:\IDOT\1106610\WD-9\0-e\1\CAD00_Sheets\06_SITE PLAN.dgn		DRAWN - GLD	REVISED -		N/A	PARKS ROADS	LASALLE	20	6			
Default	PLOT SCALE = 200.0000' / in.	CHECKED - SPH	REVISED -		SCALE: 1" = 200'			SHEET 1 OF 1 SHEETS STA. TO STA.			ILLINOIS FED. AID PROJECT CONTRACT NO. 46254	
	PLOT DATE = 2/11/2013	DATE - 2/8/2013	REVISED -									

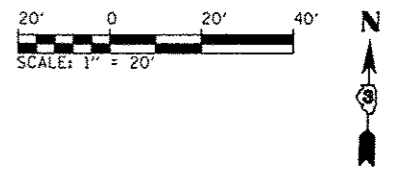


DATE	
BY	
PROJECT NO.	
DATE	
BY	
PROJECT NO.	
DATE	
BY	
PROJECT NO.	

DATE	
BY	
PROJECT NO.	
DATE	
BY	
PROJECT NO.	
DATE	
BY	
PROJECT NO.	

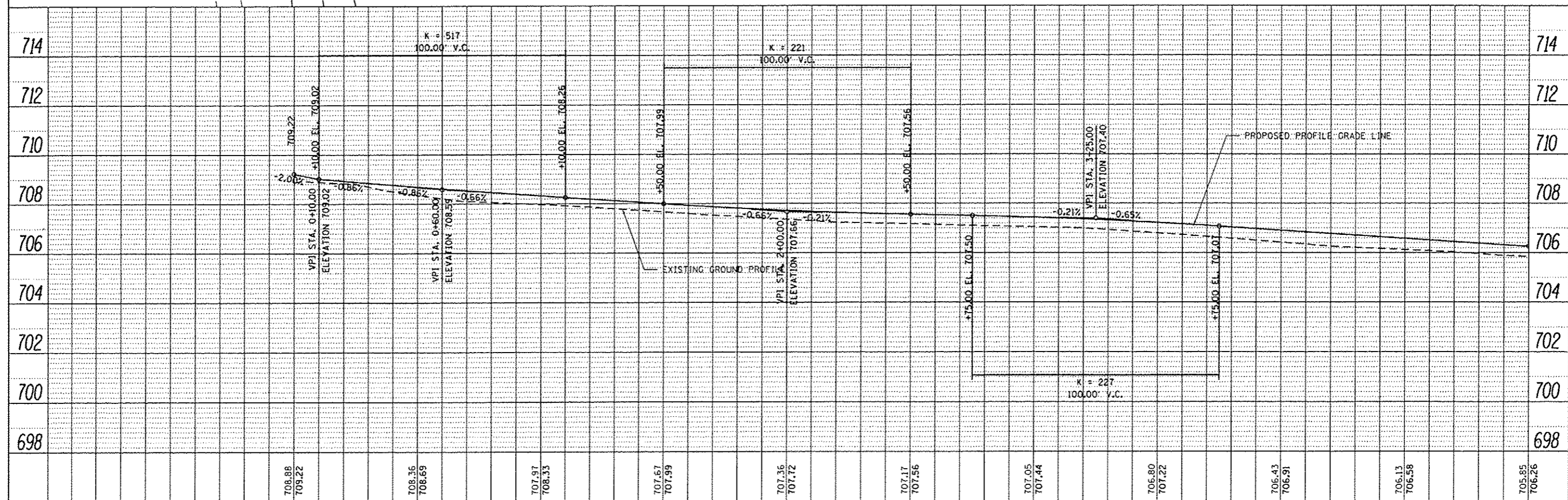
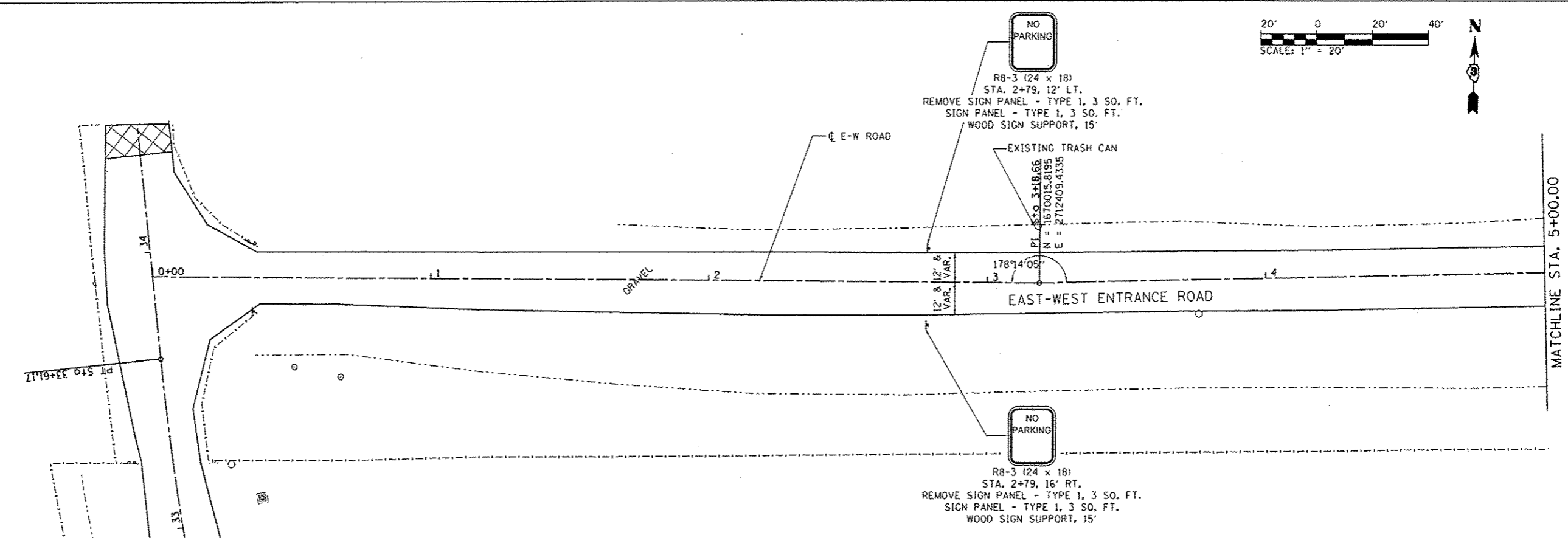


FILE NAME = L:\DOT\118661\B\W\9\1D\20\VC\200_Sheets\1007	USER NAME = Matt Overbay	DESIGNED - MJO	REVISED -	STATE OF ILLINOIS DEPARTMENT OF TRANSPORTATION	PLAN AND PROFILE NORTH-SOUTH ROAD IDNR LASALLE LAKE STATE FISH & WILDLIFE AREA				F.A. RTE. = N/A	SECTION = PARKS ROADS	COUNTY = LASALLE	TOTAL SHEETS = 20	SHEET NO. = 7
SHT_PLNPROF	PLOT SCALE = 10.0000' / in.	CHECKED - SPH	REVISED -		SCALE: 1" = 20'	SHEET 1 OF 3 SHEETS	STA. 20+00	TO STA. 25+00	ILLINOIS FED. AID PROJECT				
	PLOT DATE = 2/11/2013	DATE = 10/26/2012	REVISED -		CONTRACT NO. 46254								

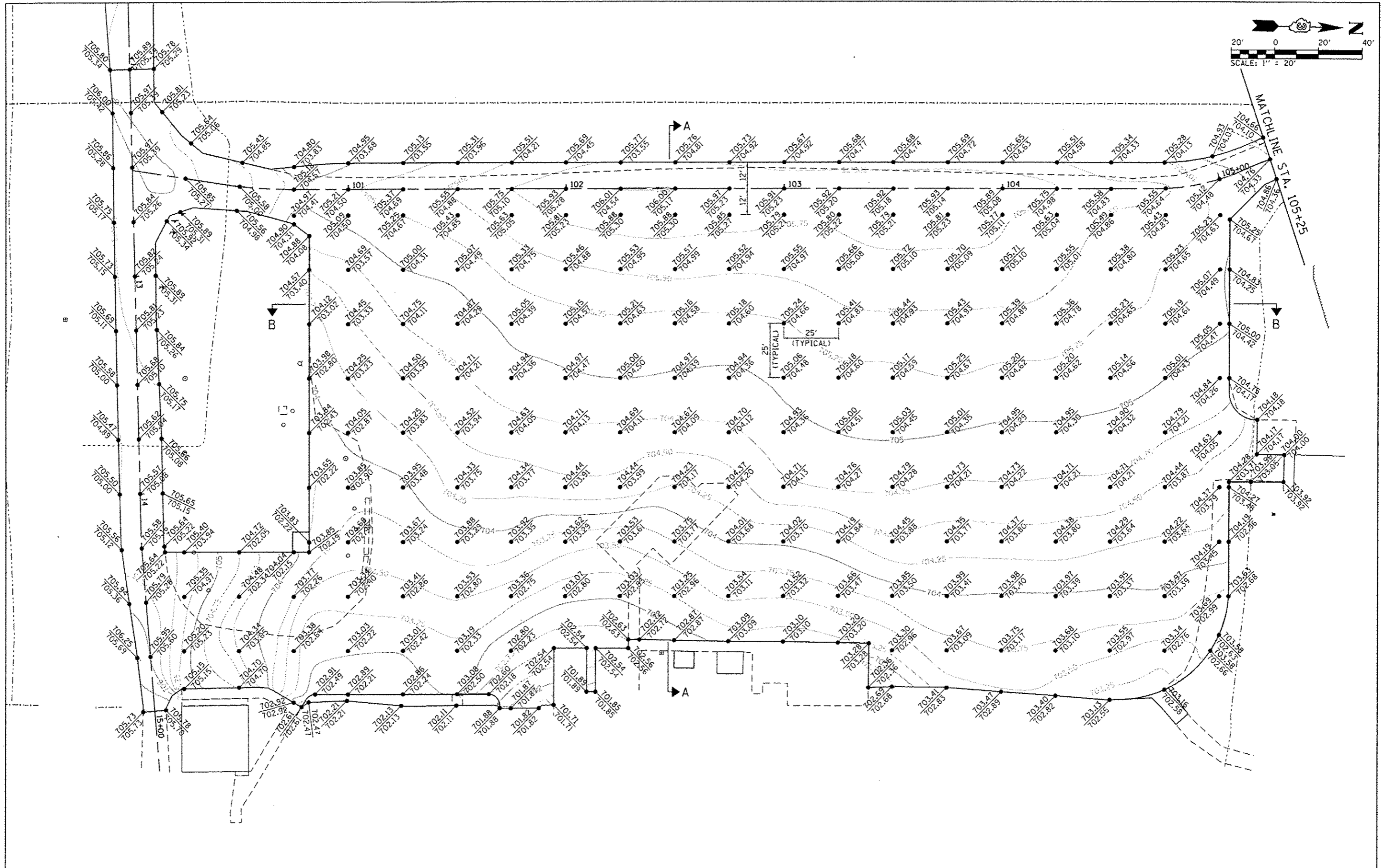
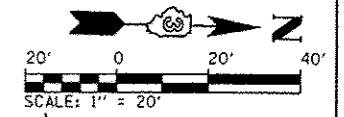


DATE	
BY	
DESIGNED	
DRAWN	
CHECKED	
DATE	
PROJECT	
NO.	
FILE NAME	

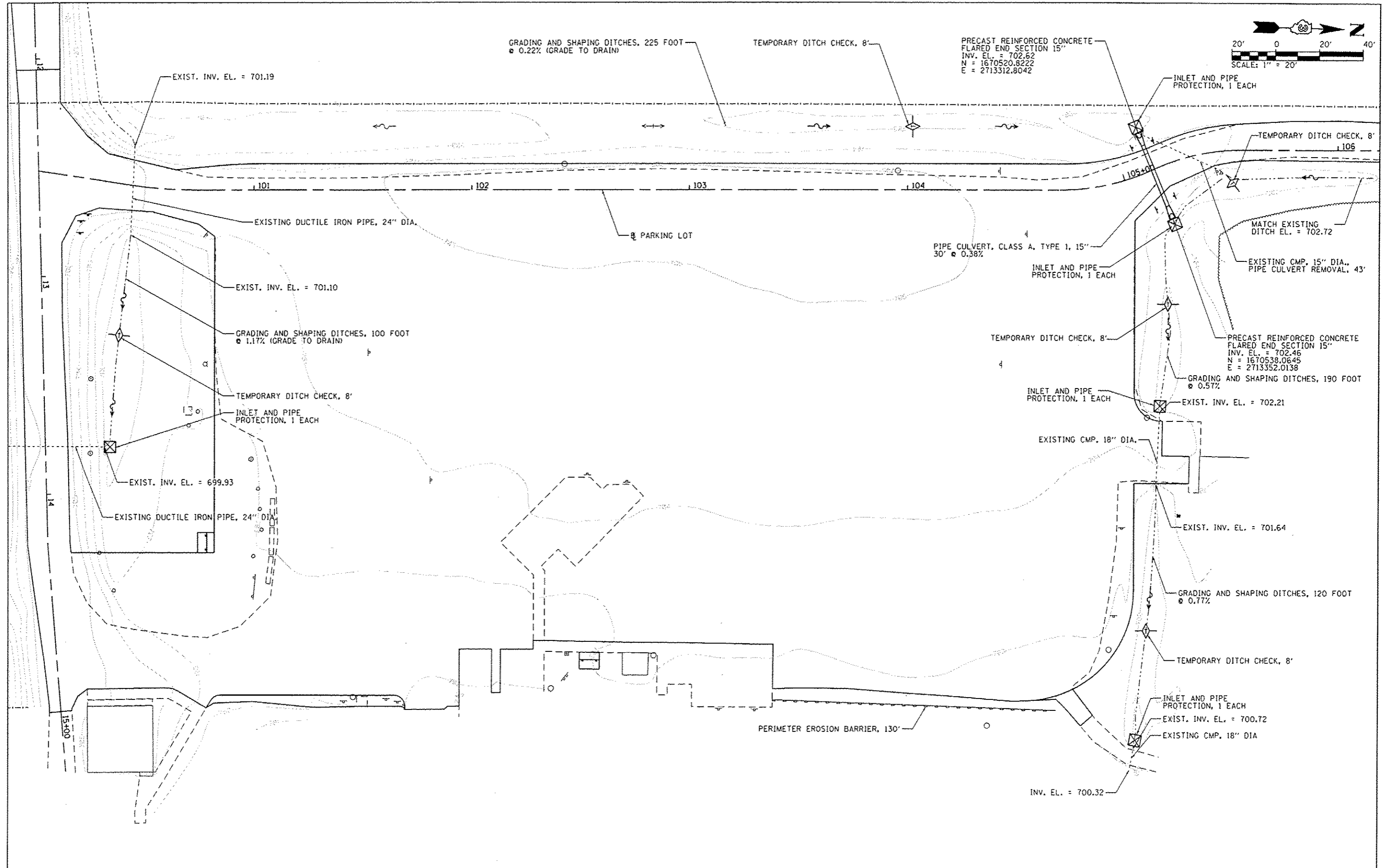
DATE	
BY	
DESIGNED	
DRAWN	
CHECKED	
DATE	
PROJECT	
NO.	
FILE NAME	



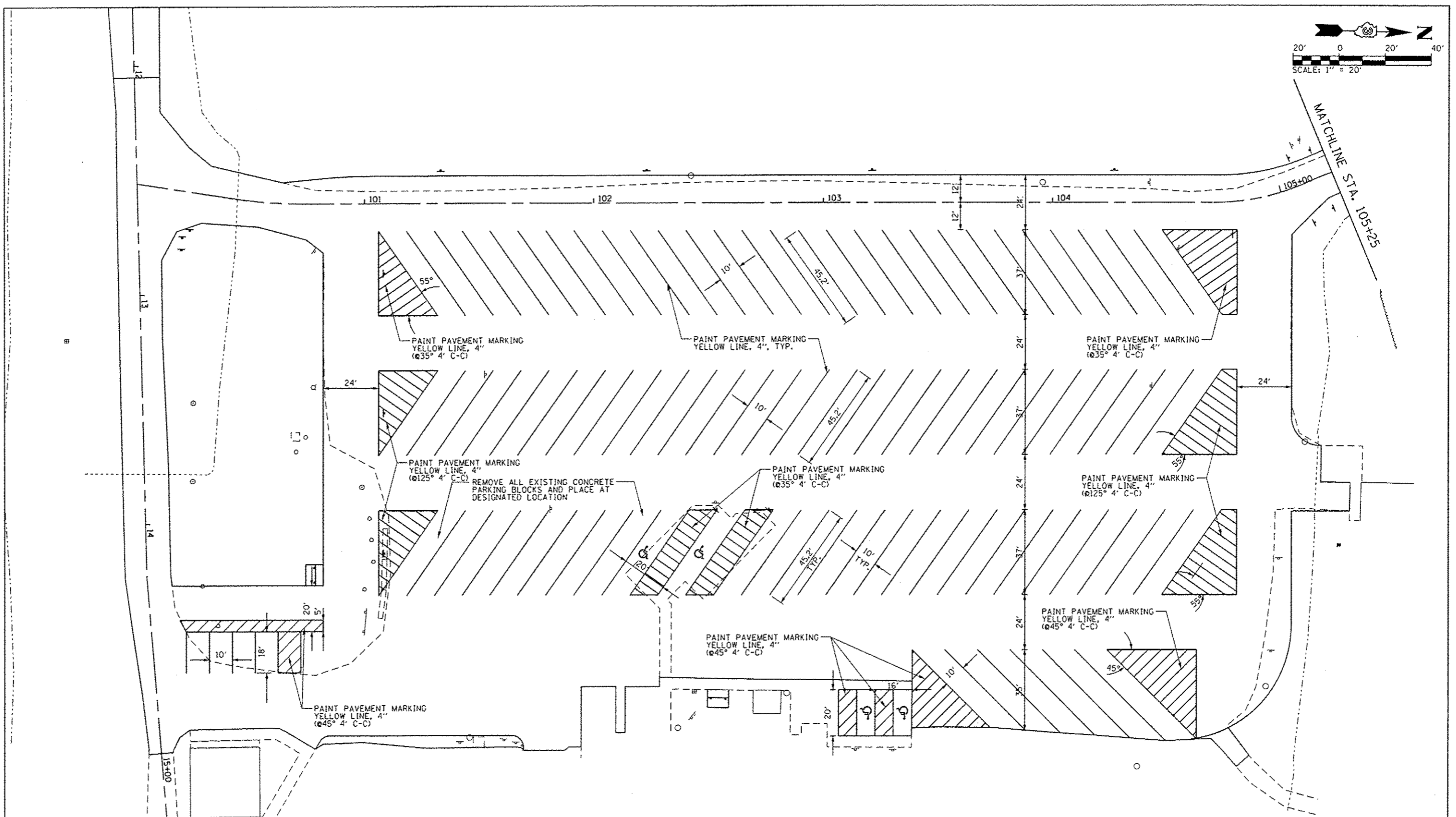
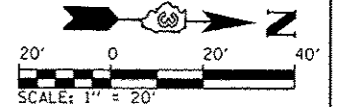
FILE NAME	USER NAME = Matt Overbay	DESIGNED - MJO	REVISED -	STATE OF ILLINOIS DEPARTMENT OF TRANSPORTATION	PLAN AND PROFILE EAST-WEST ROAD IDNR LASALLE LAKE STATE FISH & WILDLIFE AREA			F.A. RTE.	SECTION	COUNTY	TOTAL SHEETS	SHEET NO.
L:\1007\1180618\WD\7\Draw\VCADD_Sheets\010	MP-EW-0804.dgn	DRAWN - MJO	REVISED -		N/A	PARKS ROADS	LASALLE	20	10			
SMT_PLNPROF	PLOT SCALE = 40.0000' / in.	CHECKED - SPH	REVISED -		SCALE: 1" = 20' SHEET 1 OF 3 SHEETS STA. 0+00 TO STA. 5+00			CONTRACT NO. 46254				
	PLOT DATE = 2/11/2013	DATE - 10/26/2012	REVISED -		ILLINOIS FED. AID PROJECT							



FILE NAME : L:\DOT\11866\1\NO. 9\Draw\CADD_Sheets\BYPARKING LOT GRADING-STAGING.dgn	USER NAME : Matt Overbay	DESIGNED - BMB	REVISED -	STATE OF ILLINOIS DEPARTMENT OF TRANSPORTATION	MAIN PARKING LOT GRADING PLAN IDNR LASALLE LAKE STATE FISH & WILDLIFE AREA			F.A. RTE.	SECTION	COUNTY	TOTAL SHEETS	SHEET NO.
PLOT SCALE : 40.0000' / in.	PLOT DATE : 2/11/2013	DRAWN - GLD	REVISED -		SCALE: 1" = 20'	SHEET 1 OF 2 SHEETS	STA. 100+00 TO STA. 105+25	N/A	PARKS ROADS	LASALLE	20	13
		CHECKED - SPH	REVISED -		CONTRACT NO. 46254							
		DATE - 2/8/2013	REVISED -		ILLINOIS FED. AID PROJECT							



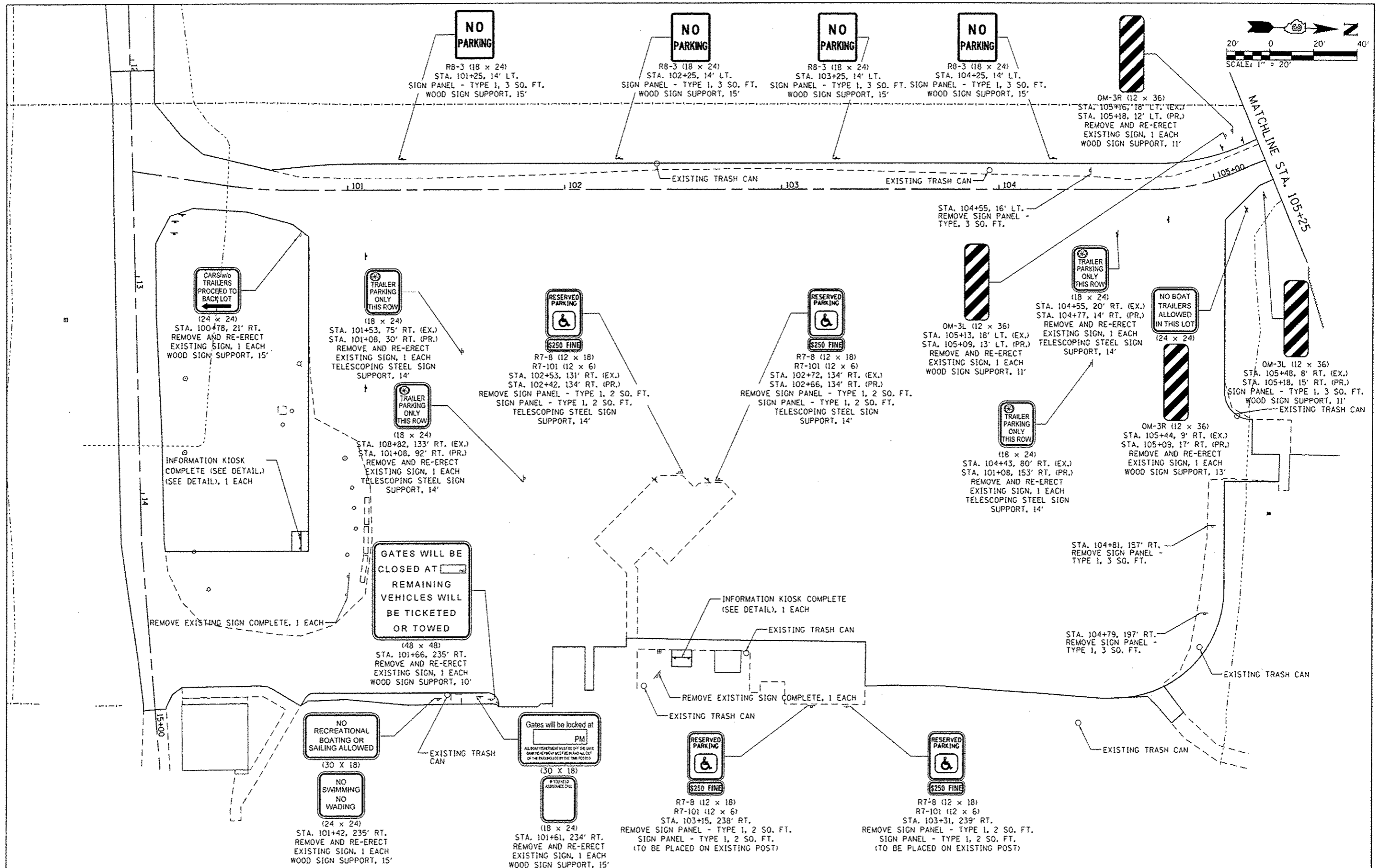
FILE NAME: L:\DOT\118061\10-9-10\1000_Sheets\1000_DRAINAGE_PLAN.dgn	USER NAME = Matt Overbey	DESIGNED - MJO	REVISED -	STATE OF ILLINOIS DEPARTMENT OF TRANSPORTATION	MAIN PARKING LOT DRAINAGE & EROSION CONTROL PLAN IDNR LASALLE LAKE STATE FISH & WILDLIFE AREA			F.A. RTE.	SECTION	COUNTY	TOTAL SHEETS	SHEET NO.
	PLOT SCALE = 48,0000 1/16" = 1'	DRAWN - MJO	REVISED -					N/A	PARKS ROADS	LASALLE	20	16
	PLOT DATE = 2/11/2013	CHECKED - SPH	REVISED -					CONTRACT NO. 46254				
	DATE - 2/8/2013	REVISED -	ILLINOIS FED. AID PROJECT									
Default				SCALE: 1" = 20'		SHEET 1 OF 2 SHEETS		STA. 100+00 TO STA. 105+25				



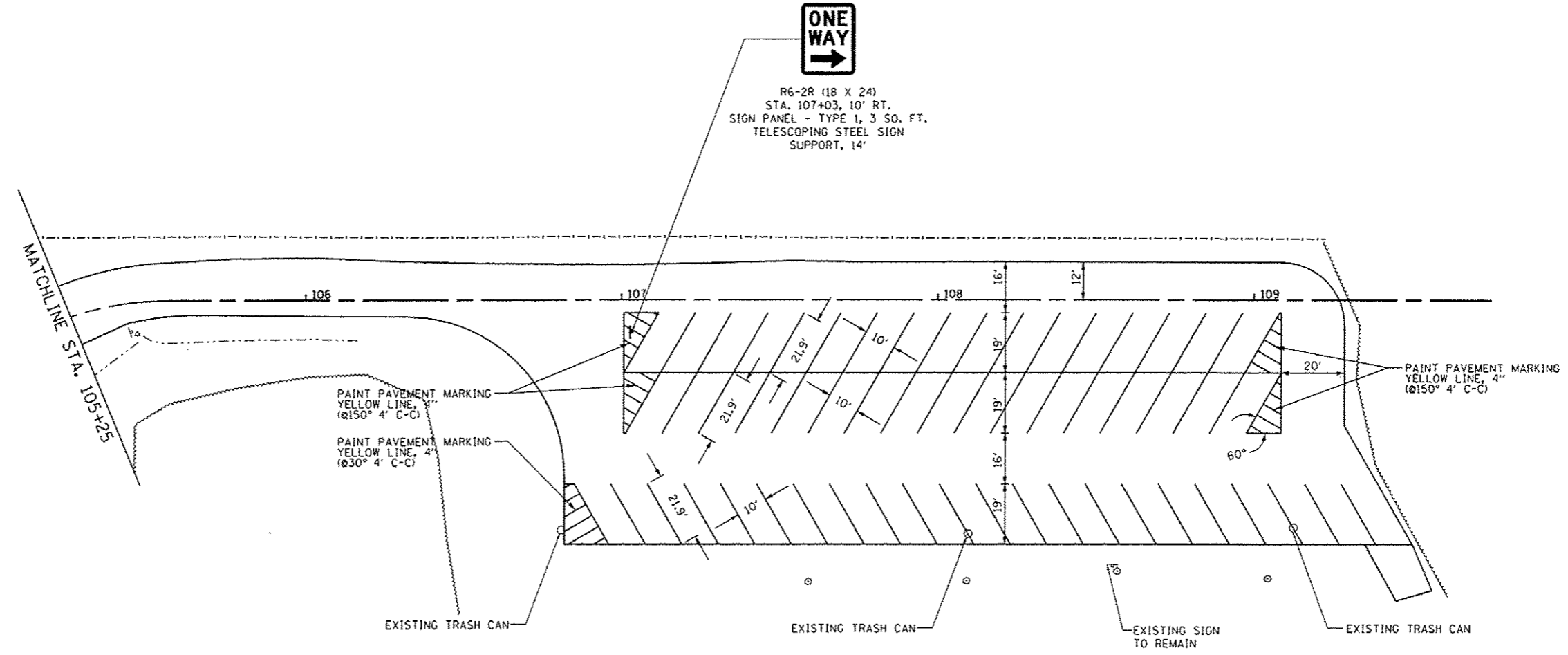
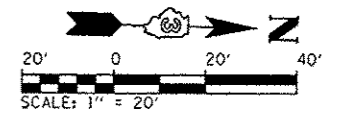
REMOVE ALL EXISTING CONCRETE PARKING BLOCKS AND PLACE AT DESIGNATED LOCATION

PARKING SUMMARY	
PROPOSED TRAILER SPACES =	86
ADA TRAILER SPACES =	2
PROPOSED CAR SPACES =	4
ADA CAR SPACES =	2
TOTAL =	94

FILE NAME = L:\1007\H86618\WD_9\Drawings\00_Sheets\01_PARKING LOT MARKING.dgn	USER NAME = Matt Overbay	DESIGNED - MJD	REVISED -	STATE OF ILLINOIS DEPARTMENT OF TRANSPORTATION	MAIN PARKING LOT PAVEMENT MARKING PLAN IDNR LASALLE LAKE STATE FISH & WILDLIFE AREA	F.A. RTE. =	SECTION	COUNTY	TOTAL SHEETS	SHEET NO.	
PLOT SCALE = 48.0000' / 1" (1/4")	CHECKED - SPH	REVISED -	N/A			PARKS ROADS	LASALLE	20	17		
PLOT DATE = 2/11/2013	DATE - 2/8/2013	REVISED -	SCALE: 1" = 20'			SHEET 1 OF 2 SHEETS		STA. 100+00 TO STA. 105+25		ILLINOIS FED. AID PROJECT	
						CONTRACT NO. 46254					



FILE NAME = L:\1007\1186618\WD\9-D-01\CAD\00_Sheets\03_PARKING LOT MARKING_SIGNING.dgn	USER NAME = Matt Overbay	DESIGNED - MJO	REVISED -	STATE OF ILLINOIS DEPARTMENT OF TRANSPORTATION	MAIN PARKING LOT SIGNING PLAN IDNR LASALLE LAKE STATE FISH & WILDLIFE AREA			F.A. RTE. =	SECTION =	COUNTY =	TOTAL SHEETS =	SHEET NO. =	
PLOT SCALE = 48.0000 ' / in.	CHECKED - SPH	REVISED -	REVISED -		SCALE: 1" = 20'	SHEET 1 OF 2 SHEETS	STA. 100+00 TO STA. 105+25	N/A	PARKS ROADS	LASALLE	20	18	
PLOT DATE = 2/11/2013	DATE = 2/8/2013	REVISED -	REVISED -										CONTRACT NO. 46254
													ILLINOIS FED. AID PROJECT



PARKING SUMMARY	
PROPOSED SPACES =	55
ADA SPACES =	0
TOTAL =	55

FILE NAME :	USER NAME :	DESIGNED :	REVISED :
L:\1007\106618\WD_9\Draw\CADD_Sheets\B\1_PARKING LOT MARKING_SECONDARY.dgn	Matt Overbey	-	-
		DRAWN :	REVISED :
		-	-
		CHECKED :	REVISED :
		-	-
		DATE :	REVISED :
		2/8/2013	-

**STATE OF ILLINOIS
DEPARTMENT OF TRANSPORTATION**

**SECONDARY PARKING LOT PAVEMENT MARKING & SIGNING PLAN
IDNR LASALLE LAKE STATE FISH & WILDLIFE AREA**

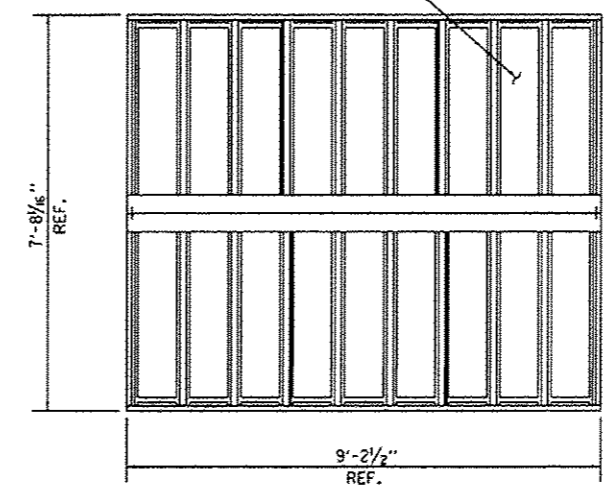
SCALE: 1" = 20' SHEET 2 OF 2 SHEETS STA. 105+25 TO STA. 109+45.98

F.A. RTE.	SECTION	COUNTY	TOTAL SHEETS	SHEET NO.
N/A	PARKS ROADS	LASALLE	20	19
CONTRACT NO. 46254			ILLINOIS FED. AID PROJECT	

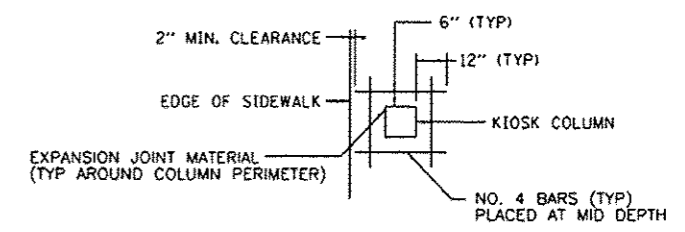
NOTES:

1. PROPOSED SIDEWALK SHALL BE CONSTRUCTED IN ACCORDANCE WITH CURRENT ADA REQUIREMENTS (NO SLOPE SHALL EXCEED 2% IN ANY DIRECTION).
2. EXPANSION JOINT MATERIAL AND REBAR SHALL BE PLACED AROUND THE KIOSK SUPPORTS WHERE THEY ARE ADJACENT TO THE PCC SIDEWALK (SEE DETAIL). COST INCIDENTAL TO INFORMATION KIOSK COMPLETE.

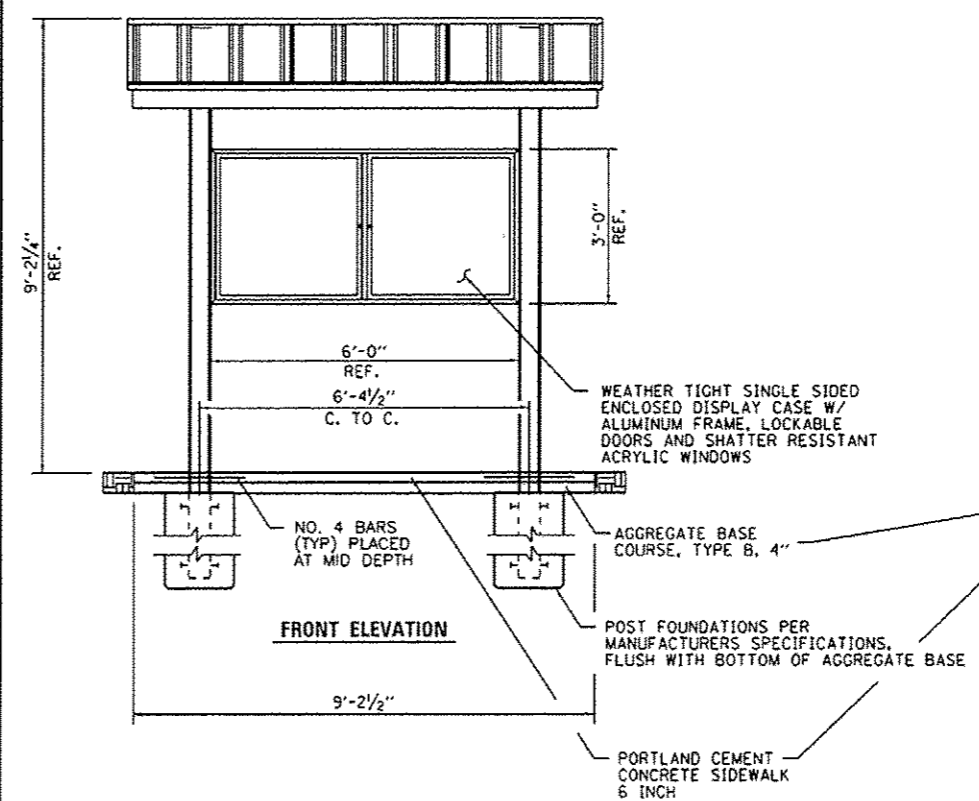
24 GA. GALVALUME COATED, PAINTED, STEEL ROOFING PANELS.



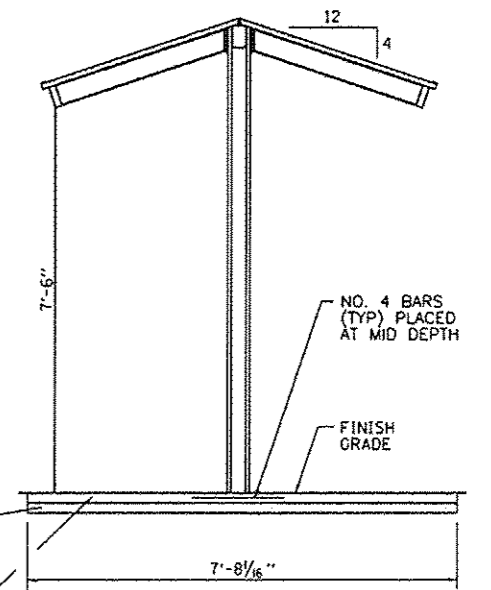
ROOF PLAN



COLUMN PLAN VIEW



FRONT ELEVATION



SIDE VIEW

TYPICAL KIOSK DETAILS

NO SCALE

FILE NAME *	USER NAME * Matt Overbay	DESIGNED - MJO	REVISED -
L:\DOT\1186618\WD_9\DOT\1186618\CADD_Sheets\020_MISC-DETAILS.dgn		DRAWN - GLD	REVISED -
Default	PLOT SCALE * 6.00000 ' / in.	CHECKED - SPH	REVISED -
	PLOT DATE * 2/11/2013	DATE - 2/8/2013	REVISED -

STATE OF ILLINOIS
DEPARTMENT OF TRANSPORTATION

MISCELLANEOUS DETAILS
IDNR LASALLE LAKE STATE FISH AND WILDLIFE AREA

F.A. RTE.	SECTION	COUNTY	TOTAL SHEETS	SHEET NO.
N/A	PARKS ROADS	LASALLE	20	20
CONTRACT NO. 46254			ILLINOIS FED. AID PROJECT	

SCALE: NTS SHEET OF SHEETS STA. TO STA.