

MODEL Default
FILE Name: 2020020020020200 - TOL College Ave Rehab04_DrawingIDENCAD_Sheet_04.dgn
PLT Name: 2020020020020200 - TOL College Ave Rehab04.dwg

				CONSTRUCTION CODE
				FEDERAL
				80% / 20%
CODE NO.	ITEM	UNIT	TOTAL QUANTITY	ROADWAY
				0004
				URBAN
20100500	TREE REMOVAL, ACRES	ACRE	0.25	0.25
20200100	EARTH EXCAVATION	CU YD	907	907
20400800	FURNISHED EXCAVATION	CU YD	108	108
20800150	TRENCH BACKFILL	CU YD	7	7
21001000	GEOTECHNICAL FABRIC FOR GROUND STABILIZATION	SQ YD	174	174
21101615	TOPSOIL FURNISH AND PLACE, 4"	SQ YD	2274	2274
25000110	SEEDING, CLASS 1A	ACRE	0.5	0.5
25000400	NITROGEN FERTILIZER NUTRIENT	POUND	45	45
25000500	PHOSPHORUS FERTILIZER NUTRIENT	POUND	45	45
25000600	POTASSIUM FERTILIZER NUTRIENT	POUND	45	45
25100115	MULCH, METHOD 2	ACRE	0.5	0.5
25100630	EROSION CONTROL BLANKET	SQ YD	2274	2274
28000250	TEMPORARY EROSION CONTROL SEEDING	POUND	232	232
28000305	TEMPORARY DITCH CHECKS	FOOT	16	16

* SPECIALTY ITEM



USER NAME	rstaley
PLOT SCALE	2.0000 ' / in.
PLOT DATE	5/8/2025

DESIGNED	KLM
DRAWN	DRR
CHECKED	ERB
DATE	11/15/2024

REVISED	05/19/2025
REVISED	
REVISED	
REVISED	

STATE OF ILLINOIS
DEPARTMENT OF TRANSPORTATION

SUMMARY OF QUANTITIES
COLLEGE AVENUE

SCALE: N.T.S.	SHEET 1 OF 7 SHEETS	STA.	TO STA.
---------------	---------------------	------	---------

F.A.U. RTE.	SECTION	COUNTY	TOTAL SHEETS	SHEET NO.
6352	20-00271-01-PV	McLEAN	48	3
CONTRACT NO. 91756				
ILLINOIS FED. AID PROJECT				

MODEL Default
FILE Name: 20-00271-01-02-00 - TOL College Ave Rehab04_DrawingIDENCAD_Sheets_Road_ILns0200271-01-02-00-en1500.dgn

				CONSTRUCTION CODE
				FEDERAL 80% / 20%
				ROADWAY
CODE NO.	ITEM	UNIT	TOTAL QUANTITY	0004
				URBAN
28000400	PERIMETER EROSION BARRIER	FOOT	766	766
28000500	INLET AND PIPE PROTECTION	EACH	6	6
28000510	INLET FILTERS	EACH	4	4
31101000	SUBBASE GRANULAR MATERIAL, TYPE B	TON	119	119
31101810	SUBBASE GRANULAR MATERIAL, TYPE B 12"	SQ YD	1749	1749
31200500	STABILIZED SUBBASE - HOT-MIX ASPHALT, 4"	SQ YD	1749	1749
35101800	AGGREGATE BASE COURSE, TYPE B 6"	SQ YD	279	279
40200500	AGGREGATE SURFACE COURSE, TYPE A 6"	SQ YD	511	511
40600275	BITUMINOUS MATERIALS (PRIME COAT)	POUND	4062	4062
40600290	BITUMINOUS MATERIALS (TACK COAT)	POUND	1030	1030
40600370	LONGITUDINAL JOINT SEALANT	FOOT	268	268
40603080	HOT-MIX ASPHALT BINDER COURSE, IL-19.0, N50	TON	235	235
40603230	POLYMERIZED HOT-MIX ASPHALT BINDER COURSE, IL-19.0, N50	TON	427	427
40604050	HOT-MIX ASPHALT SURFACE COURSE, IL-9.5, MIX "C", N50	TON	33	33

* SPECIALTY ITEM



USER NAME	■ rstaley
PLOT SCALE	■ 2.0000 ' / in.
PLOT DATE	■ 5/8/2025

DESIGNED	-	KLM
DRAWN	-	DRR
CHECKED	-	ERB
DATE	-	11/15/2024

REVISED	-	⚠ 05/19/2025
REVISED	-	
REVISED	-	
REVISED	-	

STATE OF ILLINOIS
DEPARTMENT OF TRANSPORTATION

SUMMARY OF QUANTITIES
COLLEGE AVENUE

SCALE: N.T.S.	SHEET 2 OF 7 SHEETS	STA.	TO STA.
---------------	---------------------	------	---------

F.A.U. RTE.	SECTION	COUNTY	TOTAL SHEETS	SHEET NO.
6352	20-00271-01-PV	McLEAN	48	4
CONTRACT NO. 91756				
		ILLINOIS	FED. AID PROJECT	

MODEL Default
FILE Name: 20-00271-01-0028-00 - TOL College Ave Rehab04_DrawingIDENCAD_Sheets_Rdroad_ILns0200828-00-en1500.dgn

				CONSTRUCTION CODE
				FEDERAL 80% / 20%
				ROADWAY
				0004
				URBAN
CODE NO.	ITEM	UNIT	TOTAL QUANTITY	
60108104	PIPE UNDERDRAINS, TYPE 1, 4"	FOOT	608	608
60221100	MANHOLES, TYPE A, 5'-DIAMETER, TYPE 1 FRAME, CLOSED LID	EACH	1	1
60500090	REMOVING INLETS TO MAINTAIN FLOW	EACH	1	1
60604400	COMBINATION CONCRETE CURB AND GUTTER, TYPE B-6.18	FOOT	674	674
60604900	COMBINATION CONCRETE CURB AND GUTTER, TYPE B-6.18 (VARIABLE WIDTH GUTTER FLAG)	FOOT	32	32
*	66900200	NON-SPECIAL WASTE DISPOSAL	CU YD	740
*	66900530	SOIL DISPOSAL ANALYSIS	EACH	2
*	66901001	REGULATED SUBSTANCES PRE-CONSTRUCTION PLAN	L SUM	1
*	66901003	REGULATED SUBSTANCES FINAL CONSTRUCTION REPORT	L SUM	1
*	66901006	REGULATED SUBSTANCES MONITORING	CAL DA	2
	67100100	MOBILIZATION	L SUM	1
*	72000100	SIGN PANEL - TYPE 1	SQ FT	60
	72400205	REMOVE AND RELOCATE SIGN PANEL ASSEMBLY - TYPE A	EACH	1
*	72800100	TELESCOPING STEEL SIGN SUPPORT	FOOT	104

* SPECIALTY ITEM



Farnsworth


GROUP

2709 McGRAW DRIVE

BLOOMINGTON, ILLINOIS 61704

(309) 863-8435 / info@f-w.com

USER NAME	■ rstaley	DESIGNED	- KLM
		DRAWN	- DRR
PLOT SCALE	■ 2.0000 " / in.	CHECKED	- ERB
PLOT DATE	■ 03/28/2025	DATE	- 03/28/2025

REVISED	-  05/19/2025
REVISED	-
REVISED	-
REVISED	-

STATE OF ILLINOIS
DEPARTMENT OF TRANSPORTATION

SUMMARY OF QUANTITIES
COLLEGE AVENUE

SCALE: N.T.S. SHEET 4 OF 7 SHEETS STA. TO STA.

F.A.U. RTE.	SECTION	COUNTY	TOTAL SHEETS	SHEET NO.
6352	20-00271-01-PV	McLEAN	48	6
CONTRACT NO. 91756				
ILLINOIS FED. AID PROJECT				

MODEL Default
FILE Name: 2020020028.00 - TOL College Ave Rehab04_DrawingIDENCAD_Sheets_Railroad Plans020028.00-sh-500.dgn


				CONSTRUCTION CODE	
				FEDERAL	
				80% / 20%	
				ROADWAY	
				0004	
				URBAN	
CODE NO.	ITEM	UNIT	TOTAL QUANTITY		
* 87301750	ELECTRIC CABLE IN CONDUIT, RAILROAD, NO. 14 3C	FOOT	161	161	
* 87301805	ELECTRIC CABLE IN CONDUIT, SERVICE, NO. 6 2 C	FOOT	103	103	
* 87301900	ELECTRIC CABLE IN CONDUIT, EQUIPMENT GROUNDING CONDUCTOR, NO. 6 1C	FOOT	122	122	
* 87502650	TRAFFIC SIGNAL POST, ALUMINUM 11 FT.	EACH	4	4	
* 87502700	TRAFFIC SIGNAL POST, ALUMINUM 16 FT.	EACH	1	1	
* 87800100	CONCRETE FOUNDATION, TYPE A	FOOT	12	12	
* 87900200	DRILL EXISTING HANDHOLE	EACH	6	6	
* 88102717	PEDESTRIAN SIGNAL HEAD, LED, 1-FACE, BRACKET MOUNTED WITH COUNTDOWN TIMER	EACH	6	6	
* 89500100	RELOCATE EXISTING SIGNAL HEAD	EACH	2	2	
* 89502215	MODIFY EXISTING CONTROLLER FOUNDATION	EACH	1	1	
* X0323071	SPARE FULL ACTUATED CONTROLLER, SPECIAL	EACH	1	1	
* X0326836	REMOVE AND REINSTALL VIDEO CAMERA AND EQUIPMENT	EACH	1	1	
* X2300023	TIMBER RAILING	FOOT	115	115	
X4024000	TEMPORARY ACCESS (FIELD ENTRANCE)	EACH	1	1	
X5427602	REMOVE EXISTING FLARED END SECTION	EACH	1	1	

* SPECIALTY ITEM



USER NAME	= rstaley
PLOT SCALE	= 2.0000 ' / in.
PLOT DATE	= 5/28/2025

DESIGNED -	KLM
DRAWN -	DRR
CHECKED -	ERB
DATE -	11/15/2024

REVISED -	 05/19/2025
REVISED -	
REVISED -	
REVISED -	

STATE OF ILLINOIS
DEPARTMENT OF TRANSPORTATION

SUMMARY OF QUANTITIES
COLLEGE AVENUE

SCALE: N.T.S.	SHEET 6 OF 7 SHEETS	STA.	TO STA.
---------------	---------------------	------	---------

F.A.U. RTE.	SECTION	COUNTY	TOTAL SHEETS	SHEET NO.
6352	20-00271-01-PV	McLEAN	48	8
CONTRACT NO. 91756				
ILLINOIS FED. AID PROJECT				

MODEL: Default
FILE NAME: 20-00271-01-02-20-00 - TOL College Ave Rehabilitation-DEN/CAD_Sheets_earthroad - I:\ms02\00271-01-02-20-00-en15-schedules - Roadway.dgn

EARTHWORK SCHEDULE									
LOCATION			A	B	C	D	E	F	G
			20200100					20400800	
			EARTH EXCAVATION	ESTIMATED EXISTING TOPSOIL RESULTING FROM EARTH EXCAVATION (TO BE HAULED OFFSITE)	ESTIMATED EARTH EX MATERIAL FOR EMBANKMENT	EARTH EXCAVATION ADJUSTED FOR SHRINKAGE (25%)	ESTIMATED FILL EMBANKMENT	FURNISHED EXCAVATION	ESTIMATED WASTE OF TOPSOIL
STATION	TO	STATION	CU YD	CU YD	CU YD	CU YD	CU YD	CU YD	CU YD
COLLEGE AVE									
81+50.0	TO	85+50.0	907	334	567	425	520	108	334
PROJECT TOTALS			907	334	567	425	520	108	334

- NOTES:
- CUT END AREAS SHOWN ON THE CROSS SECTIONS INCLUDES AGGREGATE BASE & AGGREGATE SHOULDERS AND EXISTING TOPSOIL WITHIN EXCAVATION LIMIT SHOWN ON CROSS SECTIONS. CUT END AREAS DO NOT INCLUDE EXISTING HMA SURFACE OR CONCRETE SURFACE.
 - FILL END AREAS SHOWN ON THE CROSS SECTIONS ARE TO TOP OF EMBANKMENT GRADE AND DO NOT INCLUDE AREA OF NEW TOPSOIL PLACEMENT.
 - ESTIMATE 25% SHRINKAGE FACTOR.
 - ROADWAY EARTHWORK SCHEDULE IS SHOWN FOR INFORMATION ONLY.

EROSION CONTROL SCHEDULE							
LOCATION			MULCH, METHOD 2	TEMPORARY EROSION CONTROL SEEDING	TEMPORARY DITCH CHECKS	PERIMETER EROSION BARRIER	EROSION CONTROL BLANKET
			25100115	28000250	28000305	28000400	25100630
FROM	TO	LT/RT	ACRE	POUND	FOOT	FOOT	SQ YD
COLLEGE AVE							
81+50.0	85+50.0	LT/RT	0.50	232	16	766	2,274
TOTAL			0.50	232	16	766	2,274

NOTE: SEE THE ROADWAY DRAINAGE STRUCTURE SCHEDULE FOR LOCATIONS AND QUANTITIES FOR INLET AND PIPE PROTECTION AND INLET FILTERS.

LANDSCAPE REMOVAL				
LOCATION				20100500 TREE REMOVAL, ACRES
				ACRE
FROM	OFFSET	TO	OFFSET	ACRE
COLLEGE AVE				
82+61.0	LT	83+41.6	LT	0.10
82+80.4	RT	84+20.7	RT	0.15
TOTAL				0.25

LANDSCAPE SCHEDULE							
ROAD	FROM	TO	21101615	25000110	25000400	25000500	25000600
			TOPSOIL FURNISH AND PLACE, 4"	SEEDING, CLASS 1A	NITROGEN FERTILIZER NUTRIENT	PHOSPHORUS FERTILIZER NUTRIENT	POTASSIUM FERTILIZER NUTRIENT
	STATION	STATION	SQ YD	AC	POUND	POUND	POUND
COLLEGE AVE	81+50.0	85+50.0	2,274	0.50	45	45	45
TOTAL			2,274	0.50	45	45	45

AGGREGATE SCHEDULE								
LOCATION			21001000	31101000	31101810	31200500	35101800	40200500
			GEOTECHNICAL FABRIC FOR GROUND STABILIZATION	SUBBASE GRANULAR MATERIAL, TYPE B	SUBBASE GRANULAR MATERIAL, TYPE B 12"	STABILIZED SUBBASE - HOT-MIX ASPHALT, 4"	AGGREGATE BASE COURSE, TYPE B 6"	AGGREGATE SURFACE COURSE, TYPE A 6"
FROM	TO	LT/RT	SQ YD	TON	SQ YD	SQ YD	SQ YD	SQ YD
81+50.0	85+50.0	LT/RT	174	119	1,749	1,749	279	511
TOTAL			174	119	1,749	1,749	279	511

HMA PAVEMENT SCHEDULE										
LOCATION			40600275	40600290	40600370	40603080	40603230	40604050	40604160	44201803
			BITUMINOUS MATERIALS (PRIME COAT)	BITUMINOUS MATERIALS (TACK COAT)	LONGITUDINAL JOINT SEALANT	HOT-MIX ASPHALT BINDER COURSE, IL-19.0, N50	POLYMERIZED HOT-MIX ASPHALT BINDER COURSE, IL-19.0, N50	HOT-MIX ASPHALT SURFACE COURSE, IL-9.5, MIX "C", N50	POLYMERIZED HOT-MIX ASPHALT SURFACE COURSE, IL-9.5, MIX "D", N50	CLASS D PATCHES, TYPE II, 13"
FROM	TO	LT/RT	POUND	POUND	FOOT	TON	TON	TON	TON	SQ YD
COLLEGE AVE										
81+50.0	85+50.0	LT/RT	4,062	1,030	268	235	427	33	171	44
TOTAL			4,062	1,030	268	235	427	33	171	44

ROADWAY REMOVAL SCHEDULE				
LOCATION			44000100	44000500
			PAVEMENT REMOVAL	COMBINATION CURB AND GUTTER REMOVAL
FROM	TO	LT/RT	SQ YD	FOOT
COLLEGE AVE				
81+50.0	84+22.6	LT/RT	1,670	710
TOTAL			1,670	710

PORTLAND CEMENT CONCRETE SCHEDULE						
LOCATION			42001300	42400300	60604400	60604900
			PROTECTIVE COAT	PORTLAND CEMENT CONCRETE SIDEWALK 6 INCH	COMBINATION CONCRETE CURB AND GUTTER, TYPE B-6.18	COMBINATION CONCRETE CURB AND GUTTER, TYPE B-6.18 (VARIABLE WIDTH GUTTER FLAG)
FROM	TO	LT/RT	SQ YD	SQ FT	FOOT	FOOT
COLLEGE AVE						
81+50.0	85+50.0	LT/RT	454	2,310.0	674.0	32.0
TOTAL			454	2,310.0	674.0	32.0

ROADWAY ADJUSTMENT SCHEDULE			
LOCATION		56109210	X8140115
		WATER VALVES TO BE ADJUSTED	HANDHOLE TO BE ADJUSTED
STATION	OFFSET	EACH	EACH
81+53.0	26.5' RT		1
81+91.0	42.8' RT	1	
83+58.5	41.8' RT	1	
TOTAL		2	1

ROADWAY MISCELLANEOUS ITEMS				
LOCATION			42400800	X2300023
			DETECTABLE WARNINGS	TIMBER RAILING
FROM	TO	LT/RT	SQ FT	FOOT
COLLEGE AVE				
82+40.0	83+50.0	LT		115
82+01.1		LT	20	
82+13.0		RT	10	
82+35.8		LT	20	
82+47.8		RT	10	
83+65.5		LT	59	
83+98.7		RT	18	
84+65.5		LT	24	
84+81.2		LT	10	
84+95.5		RT	10	
85+03.8		RT	10	
TOTAL			191	115

SIGNAGE SCHEDULE								
STATION	OFFSET	ALIGNMENT/DIRECTION	LEGEND/DESCRIPTION	W(IN)	H(IN)	72000100	72400205	72800100
						SIGN PANEL - TYPE 1	REMOVE AND RELOCATE SIGN PANEL ASSEMBLY - TYPE A	TELESCOPING STL SIGN SIGN SUPPORT
						(SQ FT)	(EACH)	PAY LENGTH (FT)
80+76	28' RT	PR COLLEGE AVE	W10-1 GRADE CROSSING	36		7		15
81+56	22' LT	PR COLLEGE AVE	W10-1 GRADE CROSSING	24		3		12
81+65	37' RT	PR COLLEGE AVE	W10-1 GRADE CROSSING	24		3		12
82+83	37' LT	PR COLLEGE AVE	W10-1 GRADE CROSSING	24		3		12
82+99	32' RT	PR COLLEGE AVE	W10-1 GRADE CROSSING	24		3		12
83+35	29.5' LT	PR COLLEGE AVE	W10-1 GRADE CROSSING	36		7		15
82+01	23' RT	PR COLLEGE AVE	R8-8	24	30		1	13
82+50	23' RT	PR COLLEGE AVE	R8-8	24	30	5		13
83+69	47' RT	PR COLLEGE AVE	W10-I101	18	24	3		
84+01	52' RT	PR COLLEGE AVE	W10-I101	18	24	3		
84+69	60' LT	PR COLLEGE AVE	W10-I101	18	24	3		
84+87	40' LT	PR COLLEGE AVE	W10-I101	18	24	3		
84+98	67' RT	PR COLLEGE AVE	W10-I101	18	24	3		
85+09	53' RT	PR COLLEGE AVE	W10-I101	18	24	3		
83+69	11' LT	PR COLLEGE AVE	W25-2	24	30	5		
83+78	37' RT	PR COLLEGE AVE	W25-2	24	30	5		
TOTAL						60	1	104

PAVEMENT MARKING REMOVAL SCHEDULE						
FROM		TO		ALIGNMENT	DESCRIPTION	78300202
						PAVEMENT MARKING REMOVAL - WATER BLASTING
STATION	OFFSET	STATION	OFFSET			SQ FT
727+26.2	8.4' RT	727+26.2	4.9' LT	WHITE OAK	STOP BAR	27
727+14.1	5.7' LT	727+14.1	12.4' LT	WHITE OAK	STOP BAR	25
727+14.8	18.8' LT	727+25.6	29.9' LT	WHITE OAK	STOP BAR	31
727+27.2	7.4' RT	727+36.6	7.4' RT	WHITE OAK	DOUBLE YELLOW	8
727+13.2	5.3' LT	727+36.6	6.5' LT	WHITE OAK	6" SOLID WHITE	11
727+45.3	1.3' RT	-	-	WHITE OAK	LEFT TURN ARROW	16
725+86.9	7.1' RT	725+86.9	19.4' RT	WHITE OAK	STOP BAR	25
84+74.3	9.5' LT	84+82.6	23.2' LT	COLLEGE AVE	STOP BAR	27
84+82.6	23.2' LT	84+82.6	33.9' LT	COLLEGE AVE	STOP BAR	29
84+86.8	2.7' RT	84+86.8	8.6' LT	COLLEGE AVE	STOP BAR	23
84+75.1	9.5' LT	85+98.5	7.1' RT	COLLEGE AVE	6" SOLID WHITE	62
84+85.4	3.3' RT	00+00.0	7.4' LT	COLLEGE AVE	DOUBLE YELLOW	228
84+85.4	6.2' RT	00+00.0	8.0' RT	COLLEGE AVE	DOUBLE YELLOW	228
84+85.4	RT	87+14.6	LT/RT	COLLEGE AVE	45 DEGREE DIAGONAL	78
85+08.8	1.1' LT	-	-	COLLEGE AVE	LEFT TURN ARROW	16
85+80.2	0.1' RT	-	-	COLLEGE AVE	LEFT TURN ARROW	16
TOTALS						850

MODEL Default
FILE Name: 202002030028.00 - TOL College Ave Rehabilitation DrawingsDGN/CAD Sheets - gdrad - Plans020028.00-en5-schedules - Roadway.dgn



USER NAME	■ rstaley	DESIGNED	- KLM	REVISED	- 05/19/2025
		DRAWN	- DRR	REVISED	-
PLOT SCALE	■ 2.0000 " / in.	CHECKED	- ERB	REVISED	-
PLOT DATE	■ 03/28/2025	DATE	- 03/28/2025	REVISED	-

STATE OF ILLINOIS
DEPARTMENT OF TRANSPORTATION

SCHEDULE OF QUANTITIES
COLLEGE AVENUE

SCALE: N.T.S. SHEET 3 OF 5 SHEETS STA. TO STA.

F.A.U. RTE.	SECTION	COUNTY	TOTAL SHEETS	SHEET NO.
6352	20-00271-01-PV	McLEAN	48	14
CONTRACT NO. 91756				
ILLINOIS FED. AID PROJECT				

MODEL Default
FILE Name: 202002002028.00 - TOL College Ave Rehabilitation_DrawingIDENCAD_Sheet_Railroad_Runs02002028.00-en15-schedules - Roadway.dgn

PAVEMENT MARKING SCHEDULE													
FROM		TO		ALIGNMENT	DESCRIPTION	78000100	78000400	78000500	78000600	78000650	78008300	78008330	78008350
						THERMOPLASTIC PAVEMENT MARKING - LETTERS AND SYMBOLS	THERMOPLASTIC PAVEMENT MARKING - LINE 6"	THERMOPLASTIC PAVEMENT MARKING - LINE 8"	THERMOPLASTIC PAVEMENT MARKING - LINE 12"	THERMOPLASTIC PAVEMENT MARKING - LINE 24"	POLYUREA PAVEMENT MARKING TYPE II - LETTERS AND SYMBOLS	POLYUREA PAVEMENT MARKING TYPE II - LINE 6"	POLYUREA PAVEMENT MARKING TYPE II - LINE 12"
STATION	OFFSET	STATION	OFFSET			SQ FT	FOOT	FOOT	FOOT	FOOT	SQ FT	FOOT	FOOT
81+50.4				COLLEGE AVE	LEFT ARROW	16							
82+76.6				COLLEGE AVE	LEFT ARROW	16							
83+53.2				COLLEGE AVE	LEFT ARROW	16							
85+17.7				COLLEGE AVE	LEFT ARROW	16							
85+65.4				COLLEGE AVE	LEFT ARROW	16							
86+13.0				COLLEGE AVE	LEFT ARROW						16		
82+00.9				COLLEGE AVE	STOP BAR					23			
82+43.0				COLLEGE AVE	STOP BAR					11			
83+72.2				COLLEGE AVE	STOP BAR					12			
83+80.8	6' RT			COLLEGE AVE	STOP BAR					23			
84+95.8	8' LT			COLLEGE AVE	STOP BAR					20			
84+98.7				COLLEGE AVE	STOP BAR					12			
84+98.7	4' RT	85+98.0	4' RT	COLLEGE AVE	YELLOW ON 45° ANGLE (20' SPACING)				24				
85+98.0	4' RT	87+17.2	22' RT	COLLEGE AVE	YELLOW ON 45° ANGLE (20' SPACING)								64
80+97.0	6' LT	83+72.2	6' LT	COLLEGE AVE	SOLID DOUBLE YELLOW		554						
84+98.7	4' RT	84+98.7	8' RT	COLLEGE AVE	SOLID DOUBLE YELLOW		8						
84+98.7	8' RT	85+98.0	8' RT	COLLEGE AVE	SOLID DOUBLE YELLOW		200						
85+98.0	8' RT	87+13.0	8' RT	COLLEGE AVE	SOLID DOUBLE YELLOW							226	
84+98.7	4' RT	85+98.0	4' RT	COLLEGE AVE	SOLID DOUBLE YELLOW		200						
85+98.0	4' RT	86+13.0	4' RT	COLLEGE AVE	SOLID DOUBLE YELLOW							28	
86+13.0	4'RT	87+13.0	7.4' LT	COLLEGE AVE	SOLID DOUBLE YELLOW							202	
81+47.0	6' RT	83+80.8	6' RT	COLLEGE AVE	SOLID WHITE		233						
84+95.8	8' LT	85+98.0	8' LT	COLLEGE AVE	SOLID WHITE		104						
85+98.0	8' LT	86+13.0	8' LT	COLLEGE AVE	SOLID WHITE							15	
84+78.9	36.6' LT	85+00.2	49.8' RT	COLLEGE AVE	WHITE CROSSWALK		89						
84+85.7	33.1' LT	85+05.3	45.0' RT	COLLEGE AVE	WHITE CROSSWALK		80						
83+20.0				COLLEGE AVE	RAIL ROAD CROSSING	100							
82+00.9		82+46.0		COLLEGE AVE	RAIL ROAD CROSSING (WHITE ON 45°)		300						
82+46.0				COLLEGE AVE	RAIL ROAD CROSSING			23					
81+76.9				COLLEGE AVE	RAIL ROAD CROSSING (BIKE PATH)	100							
82+64.1				COLLEGE AVE	RAIL ROAD CROSSING (BIKE PATH)	100							
82+00.3				COLLEGE AVE	RAIL ROAD CROSSING (SIDEWALK)						50		
82+63.7				COLLEGE AVE	RAIL ROAD CROSSING (SIDEWALK)						50		
727+55.6				WHITE OAK RD	LEFT ARROW	16.0							
725+87.1	34.6' RT	725+94.0	27.5' RT	WHITE OAK RD	STOP BAR					10			
725+94.0	27.5' RT	725+94.0	7.0' RT	WHITE OAK RD	STOP BAR					22			
727+36.6				WHITE OAK RD	STOP BAR					31			
725+86.9	7' RT	725+94.0	7' RT	WHITE OAK RD	SOLID WHITE		7						
725+96.6	47.1' RT	726+06.5	30.8' LT	WHITE OAK RD	WHITE CROSSWALK		79						
726+03.6	71' RT	726+17.2	35.3' LT	WHITE OAK RD	WHITE CROSSWALK		107						
726+89.2	49.9' RT	727+27.0	29.6' LT	WHITE OAK RD	WHITE CROSSWALK		88						
726+98.5	44.4' RT	727+31.8	25.7' LT	WHITE OAK RD	WHITE CROSSWALK		77						
TOTALS						396	2,126	23	24	164	116	471	64

③ EX PERMANENT EASEMENT
PER ROAD CONSTRUCTION
DRAWINGS DATED JUNE 6, 1986
ICC DOCKET #: T1986-0106

PAVEMENT
IMPROVEMENTS
BEGIN
STA 81+50.00

EX WORKING EASEMENT
PER ROAD CONSTRUCTION DRAWINGS
DATED JUNE 6, 1986
ICC DOCKET #: T1986-0106

PAVEMENT IMPROVEMENTS END STA 84+22.64	
---	--

④ PR AGGREGATE SURFACE COURSE,
TYPE A, 6" (4'X6')

KRUGER ROBERT T
14-30-100-008

- MULTI-USE PATH
IMPROVEMENTS
STA 85+50.00

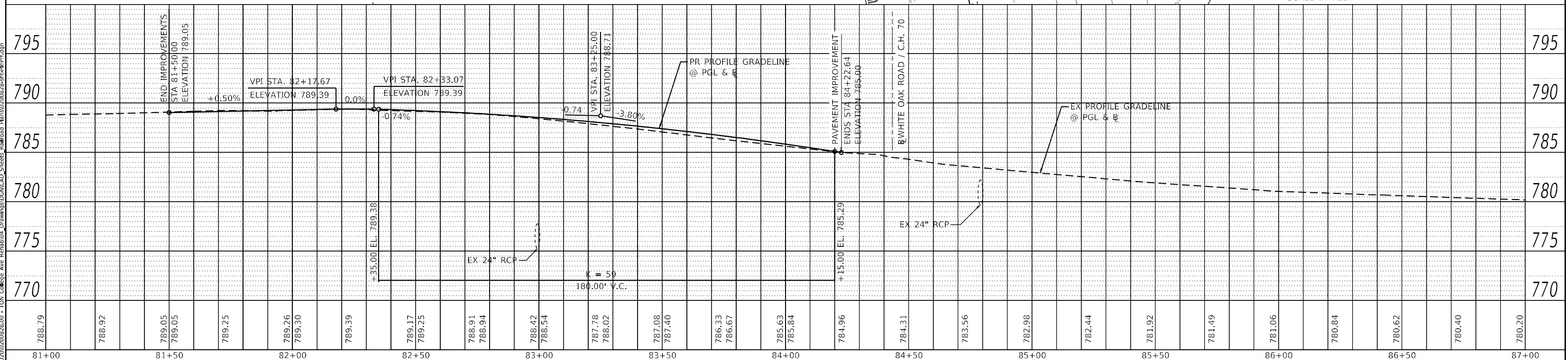
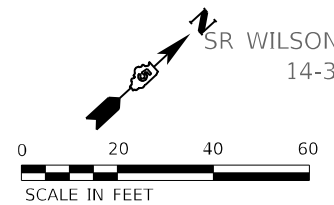
W COLLEGE AVENUE

SR WILSON CONSTRUCTION
14-30-300-406

INTERCHANGE CITY WEST
14-30-376-016


NOTE:
SEE DRAINAGE PLAN AND PROFILE
SHEETS FOR EXISTING & PROPOSED
STORM SEWER SYSTEM INFORMATION.

STA 84-
139.6' R



USER NAME	■ rstaley
PLOT SCALE	■ 40.000
PLOT DATE	■ 5/8/20

DESIGNED	-	KLM
DRAWN	-	JJO,
CHECKED	-	ERB
DATE	-	11/1

REVISED	-	 05/19/2025
REVISED	-	
REVISED	-	
REVISED	-	

**STATE OF ILLINOIS
DEPARTMENT OF TRANSPORTATION**

PLAN AND PROFILE COLLEGE AVENUE

SCALE: 1" = 20'	SHEET 1 OF 1 SHEETS	STA. 81+50.00 TO STA. 84+22.64
-----------------	---------------------	--------------------------------

F.A.U. RTE.	SECTION	COUNTY	TOTAL SHEETS	SHEET NO.
6352	20-00271-01-PV	McLEAN	48	20
		CONTRACT NO. 91756		
ILLINOIS		FED. AID PROJECT		

③ EX PERMANENT EASEMENT
PER ROAD CONSTRUCTION
DRAWINGS DATED JUNE 6, 1986
ICC DOCKET #: T1986-0106

EX WORKING EASEMENT
PER ROAD CONSTRUCTION DRAWINGS
DATED JUNE 6, 1986
ICC DOCKET #: T1986-0106

KRUGER ROBERT T
14-30-100-008

W COLLEGE AVENUE

SR WILSON CONSTRUCTION
14-30-300-406

INTERCHANGE CITY WEST
14-30-376-016

PR RR BUNGALOW —/—
(TO BE FURNISH AND
INSTALLED BY OTHERS)

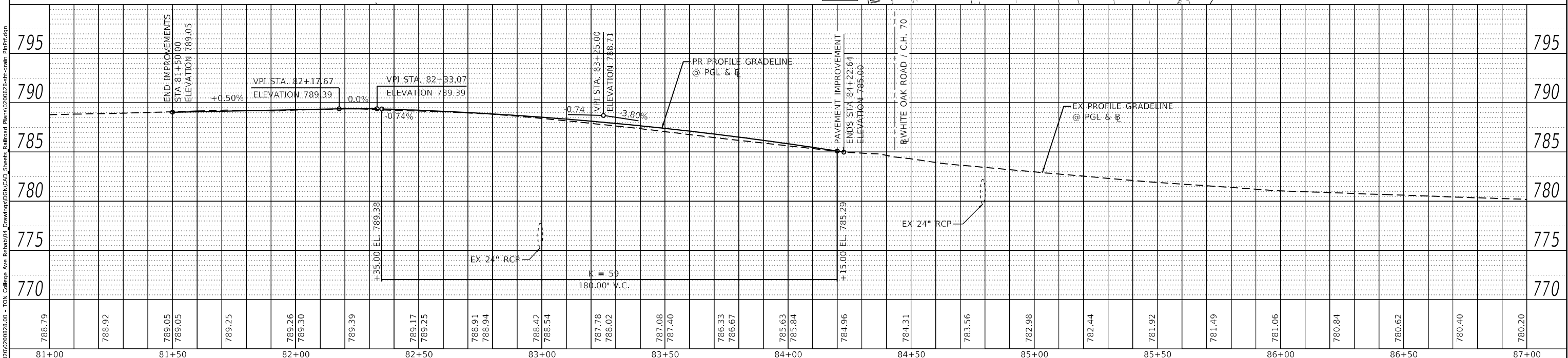
LEGEND

CLASS D PATCHES, 13"

NOTE: SEE CROSS SECTIONS FOR PR DRAINAGE SWALE INFORMATION

STA 84+40
139.6' RT

0 20 40 60
SCALE IN FEET



STATE OF ILLINOIS
DEPARTMENT OF TRANSPORTATION

**DRAINAGE PLAN AND PROFILE
COLLEGE AVENUE**

SCALE: 1" = 20'	SHEET 1 OF 1 SHEETS	STA. 81+50.00 TO STA. 84+22.64
-----------------	---------------------	--------------------------------

F.A.U. RTE.	SECTION	COUNTY	TOTAL SHEETS	SHEET NO.
6352	20-00271-01-PV	McLEAN	48	21
		CONTRACT NO. 91756		
		ILLINOIS	FED. AID PROJECT	

MODEL: Default
FILE NAME: J-20

 **Farnsworth**
GROUP

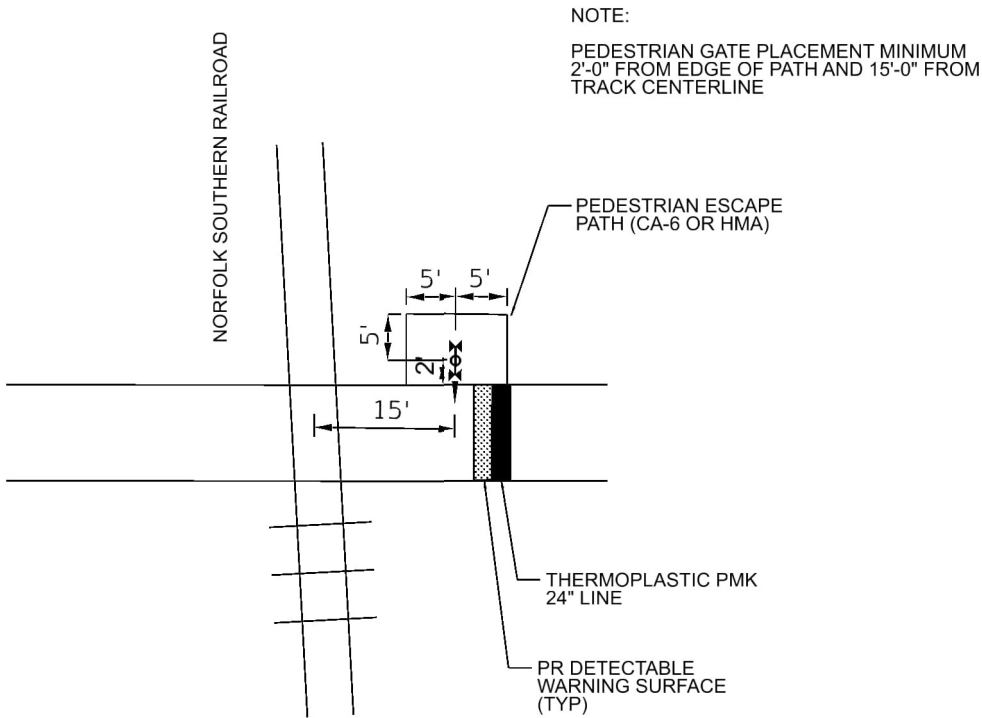
2709 McGRAW DRIVE
BLOOMINGTON, ILLINOIS 61704
(309) 863-8435 / info@f-w.com

USER NAME	dreimer	DESIGNED	KLM	REVISED	05/19/2025
		DRAWN	JJO, DRR	REVISED	
PLOT SCALE	40.0000 "/ in.	CHECKED	ERB	REVISED	
PLOT DATE	5/2/2025	DATE	11/15/2024	REVISED	

NOTES:

1. SIDEWALK AND MULTI-USE PATH TO BE ADA COMPLIANT. ADA DETAILS TO BE PROVIDED IN FUTURE PLANS.
2. PRIOR TO COMMENCING WORK, THE CONTRACTOR MUST REQUEST FROM THE RAILROAD AND FOLLOW THE LATEST VERSION OF THE "SPECIAL PROVISIONS FOR PROTECTION OF RAILWAY INTERESTS."
3. ALL UTILITY INSTALLATIONS OR RELOCATIONS ON NORFOLK SOUTHERN RIGHT-OF-WAY THAT ARE REQUIRED IN CONJUNCTION WITH THIS PROJECT CAN BE INSTALLED OR RELOCATED AS PART OF THE PROJECT PROVIDED THE CONSTRUCTION IS PERFORMED BY THE PROJECT CONTRACTOR OR PROJECT CONTRACTOR S SUB-CONTRACTOR. HOWEVER, THE UTILITY MUST SUBMIT AN APPLICATION FOR THE INSTALLATION OR RELOCATION FOR APPROPRIATE HANDLING FOR LICENSE AGREEMENT AND APPLICABLE FEES. FOR UTILITY APPLICATIONS GO TO: WWW.NSCORP.COM > REAL ESTATE > NS SERVICES > WIRE, PIPELINE, AND FIBER OPTICS PROJECTS. NOTE: LICENSE AGREEMENT MUST BE EXECUTED PRIOR TO UTILITY BEING INSTALLED OR RELOCATED.
4. ONE CALL SERVICES DO NOT LOCATE BURIED RAILROAD SIGNAL AND COMMUNICATIONS LINES. THE CONTRACTOR SHALL CONTACT THE RAILROAD S REPRESENTATIVE SEVEN (7) DAYS IN ADVANCE OF THOSE PLACES WHERE EXCAVATION, PILE DRIVING, OR HEAVY LOADS MAY DAMAGE RAILROAD UNDERGROUND LINES ON RAILROAD PROPERTY. UPON REQUEST FROM THE CONTRACTOR OR AGENCY, RAILROAD SIGNAL FORCES WILL LOCATE AND PAINT MARK OR FLAG RAILROAD UNDERGROUND SIGNAL, COMMUNICATION, AND POWER LINES IN THE AREA TO BE DISTURBED FOR THE CONTRACTOR. THE CONTRACTOR SHALL AVOID EXCAVATION OR OTHER DISTURBANCE OF THESE LINES WHICH ARE CRITICAL TO THE SAFETY OF THE RAILROAD AND THE PUBLIC. IF DISTURBANCE OR EXCAVATION IS REQUIRED NEAR A BURIED RAILROAD SIGNAL, COMMUNICATION, OR POWER LINE, THE LINE SHALL BE POTHOLED MANUALLY WITH CAREFUL HAND EXCAVATION BY THE CONTRACTOR AND PROTECTED BY THE CONTRACTOR DURING THE COURSE OF THE DISTURBANCE UNDER THE SUPERVISION AND DIRECTION OF A RAILROAD SIGNAL REPRESENTATIVE.
5. ALL WORK ON, OVER, UNDER, OR ADJACENT TO NORFOLK SOUTHERN RIGHT-OF-WAY SHALL BE DONE IN ACCORDANCE WITH THE NORFOLK SOUTHERN "PUBLIC PROJECT MANUAL".
6. FOLLOWING INSTALLATION OF THE TRACK AND RUBBER FLANGEWAYS TO THE FINAL LINE AND GRADE, THE CONTRACTOR SHOULD BE PREPARED TO PAVE UP TO 6' FROM THE TRACK CENTERLINE, OR AS OTHERWISE DIRECTED BY THE RAILROAD REPRESENTATIVE.
7. PROPOSED PROJECT WILL NOT CHANGE THE QUANTITY AND/OR CHARACTER OF THE FLOW ON THE RAILWAY'S RIGHT-OF-WAY OR IN THE DITCHES AND DRAINAGE STRUCTURES.


1



TYPICAL PEDESTRIAN CROSSING DETAIL

MODEL: Default
FILE: 130951039_Fernsworth College AvenueCulPlan_Sheet120250313_Updated_Crossing Files120028.00_Design_Railroad_v2.dgn

wsp
WSP USA Inc.
38 N. LA SALLE STREET
SUITE 4200
CHICAGO, IL 60602
TEL: (312) 782-0159
FAX: (312) 782-1684

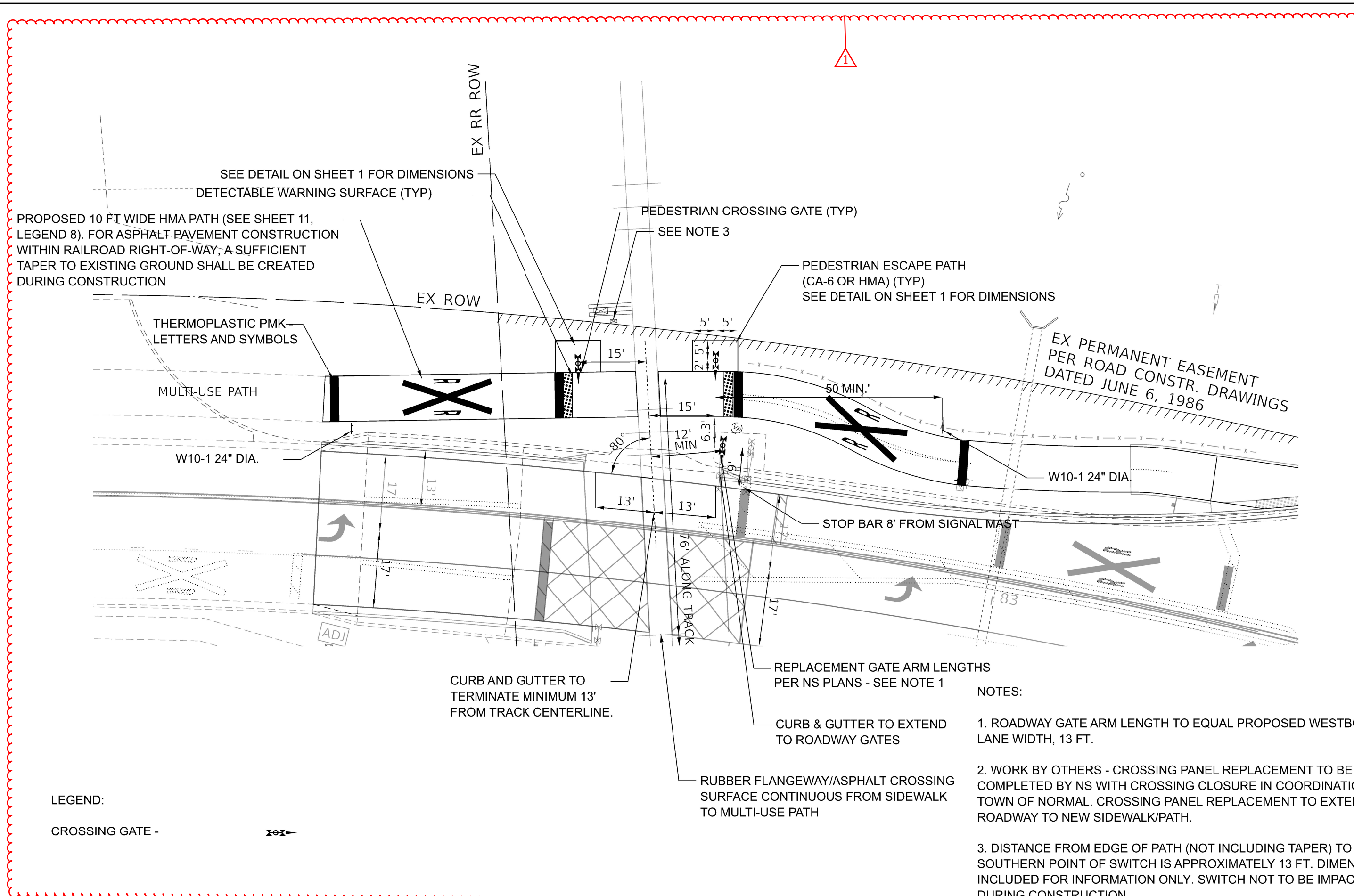
USER NAME = USMM700138	DESIGNED -	REVISED -  05/19/2025
	DRAWN -	REVISED -
PLOT SCALE = 20.0000" / in.	CHECKED -	REVISED -
PLOT DATE = 03/28/2025	DATE - 03/28/2025	REVISED -

STATE OF ILLINOIS
DEPARTMENT OF TRANSPORTATION

WEST COLLEGE AVENUE (480171Y)
GRADE CROSSING EXHIBIT SHEET 1 OF 3 - GENERAL NOTES AND DETAILS
APRIL 8, 2024

SCALE: 1" = 20' SHEET OF SHEETS STA. TO STA.

F.A.U. RTE.	SECTION	COUNTY	TOTAL SHEETS	SHEET NO.
6352	20-00271-00-PV	McLEAN	48	22
CONTRACT NO. 91756				
ILLINOIS FED. AID PROJECT				

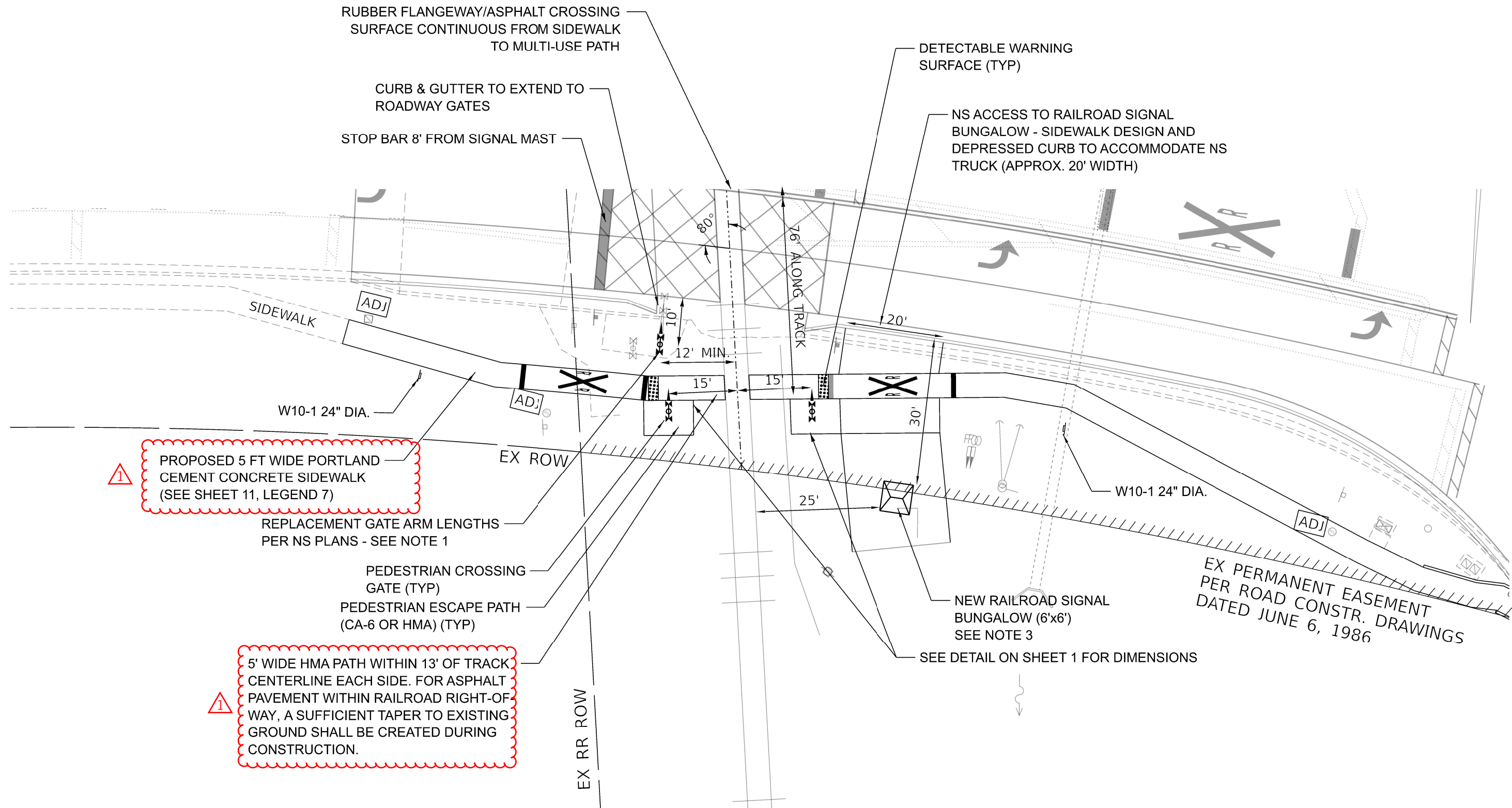


LEGEND:
CROSSING GATE -

- NOTES:
- 1. ROADWAY GATE ARM LENGTH TO EQUAL PROPOSED WESTBOUND LANE WIDTH, 13 FT.
 - 2. WORK BY OTHERS - CROSSING PANEL REPLACEMENT TO BE COMPLETED BY NS WITH CROSSING CLOSURE IN COORDINATION WITH TOWN OF NORMAL. CROSSING PANEL REPLACEMENT TO EXTEND FROM ROADWAY TO NEW SIDEWALK/PATH.
 - 3. DISTANCE FROM EDGE OF PATH (NOT INCLUDING TAPER) TO SOUTHERN POINT OF SWITCH IS APPROXIMATELY 13 FT. DIMENSION INCLUDED FOR INFORMATION ONLY. SWITCH NOT TO BE IMPACTED DURING CONSTRUCTION.

MODEL Default
FILE Name: 2025001039 - Farnsworth - Normal College Ave@9.0 - Technical@9.1 - Grade Crossing@2025001039 08-SHT Design Railroad 2025001039.dgn

<div></div> <div>WSP USA Inc. 30 N. LASALLE STREET SUITE 4200 CHICAGO, IL 60602 TEL: (312) 782-8150 FAX: (312) 782-1684</div>	USER NAME = USMM700138		DESIGNED - YW	REVISED -  05/19/2025	<div>STATE OF ILLINOIS</div> <div>DEPARTMENT OF TRANSPORTATION</div>	<div>WEST COLLEGE AVENUE (480171Y)</div> <div>GRADE CROSSING EXHIBIT SHEET 2 OF 3 - PROPOSED 10FT MULTI-USE PATH</div>					RTE.		COUNTY	TOTAL SHEETS	SHEET NO.
	PLOT SCALE = 20.0000' / in.		DRAWN - YW	REVISOR -							6352	20-00271-00-PV	McLEAN	48	23
	PLOT DATE = 5/2/2025		CHECKED - KSD	REVISED -		CONTRACT NO. 91756									
	DATE = 07/29/2024		REVISOR -	SCALE: 1" = 20'		SHEET	OF 15 SHEETS	STA.	TO STA.						



LEGEND:

CROSSING GATE -



RAILROAD CANT. MAST ARM -



NOTES:

1. ROADWAY GATE ARM LENGTH TO EQUAL PROPOSED EASTBOUND LANE WIDTH, 13 FEET, PLUS 90% OF LEFT TURN LANE, 12 FEET.
2. WORK BY OTHERS - CROSSING PANEL REPLACEMENT TO BE COMPLETED BY NS WITH CROSSING CLOSURE IN COORDINATION WITH TOWN OF NORMAL. CROSSING PANEL REPLACEMENT TO EXTEND FROM ROADWAY TO NEW SIDEWALK/PATH.
3. SIGNAL BUNGALOW 25 FEET OFF NEAREST RAIL AND 30 FEET OFF FACE OF CURB PER MUTCD 8D.01.

MODEL Default: 103901039 - Farnsworth - Normal College Ave19.0 - Technical19.1 - Grade Crossing20250313 - Xing UpdatesCADD0200228.08-SHT Design Railroad 20250427.dgn



USER NAME = USMM700138	DESIGNED - YW	REVISED - 05/19/2025
DRAWN - YW	REVISED -	
PLOT SCALE = 20.0000" / in.	CHECKED - KSD	REVISED -
PLOT DATE = 5/2/2025	DATE - 07/29/2024	REVISED -


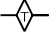
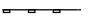
STATE OF ILLINOIS
DEPARTMENT OF TRANSPORTATION

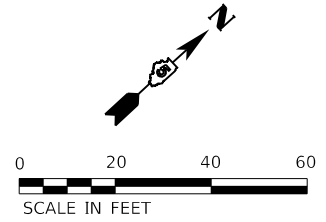
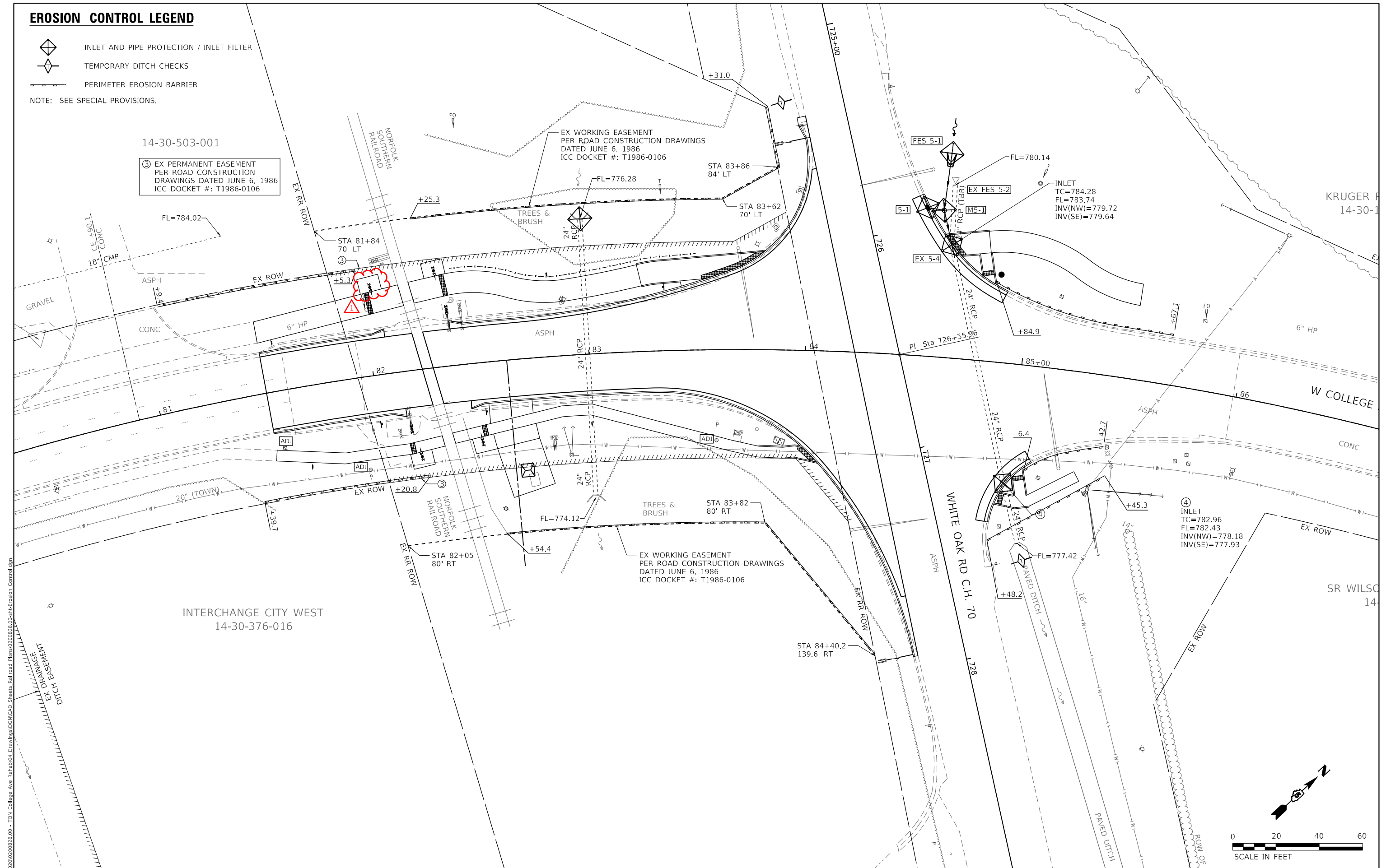
WEST COLLEGE AVENUE (480171Y)
GRADE CROSSING EXHIBIT SHEET 3 OF 3 - PROPOSED 5FT SIDEWALK

SCALE: 1" = 20' SHEET OF 15 SHEETS STA. TO STA.

RTE.	COUNTY	TOTAL SHEETS	SHEET NO.
6352	McLEAN	48	24
CONTRACT NO. 91756			
ILLINOIS FED. AID PROJECT			

EROSION CONTROL LEGEND


-  INLET AND PIPE PROTECTION / INLET FILTER
-  TEMPORARY DITCH CHECKS
-  PERIMETER EROSION BARRIER
- NOTE: SEE SPECIAL PROVISIONS.



MODEL Default: 202202020028.00 - TON College Ave Rehabilit404 Drawings\DWG\CAD Sheets - Railroad Plans\202202020028.00-eh-Erosion Control.dgn
FILE Name: 202202020028.00 - TON College Ave Rehabilit404 Drawings\DWG\CAD Sheets - Railroad Plans\202202020028.00-eh-Erosion Control.dgn

**Farnsworth**
GROUP

2709 McGRAW DRIVE
BLOOMINGTON, ILLINOIS 61704
(309) 663-8435 / info@f-w.com

USER NAME = rstaley	DESIGNED - KLM	REVISED -  05/19/2025
	DRAWN - DRR	REVISED -
	CHECKED - ERB	REVISED -
	DATE - 11/15/2024	REVISED -
PLOT SCALE = 40,0000 ' / in.		
PLOT DATE = 5/19/2025		

STATE OF ILLINOIS
DEPARTMENT OF TRANSPORTATION

EROSION CONTROL PLAN
COLLEGE AVENUE

SCALE: 1" = 20' SHEET 1 OF 1 SHEETS STA. 81+50.00 TO STA. 84+22.64

F.A.U. RTE.	SECTION	COUNTY	TOTAL SHEETS	SHEET NO.
6352	20-00271-01-PV	McLEAN	48	25
CONTRACT NO. 91756				
ILLINOIS FED. AID PROJECT				

LEGEND

- ① POLYUREA PAVEMENT MARKING TYPE II - LINE 6" (SOLID WHITE)
② POLYUREA PAVEMENT MARKING TYPE II - LINE 6" (SOLID DOUBLE YELLOW, WITH 6" GAP)
③ POLYUREA PAVEMENT MARKING TYPE II - LINE 12" (SOLID YELLOW 45° DIAGONALS @ 20' SPACING INTERVALS)
④ POLYUREA PAVEMENT MARKING TYPE II - LETTERS AND SYMBOLS
⑤ THERMOPLASTIC PAVEMENT MARKING - LINE 6" (SOLID WHITE)
⑥ THERMOPLASTIC PAVEMENT MARKING - LINE 6" (SOLID DOUBLE YELLOW, WITH 6" GAP)
⑦ THERMOPLASTIC PAVEMENT MARKING - LINE 12" (SOLID YELLOW 45° DIAGONALS @ 20' SPACING INTERVALS)
⑧ THERMOPLASTIC PAVEMENT MARKING - LINE 24" (SOLID WHITE STOP BAR)
⑨ THERMOPLASTIC PAVEMENT MARKING - LETTERS AND SYMBOLS (LARGE SIZE)
⑩ THERMOPLASTIC PAVEMENT MARKING - LINE 8" (SOLID WHITE)
⑪ THERMOPLASTIC PAVEMENT MARKING - LINE 6" (SOLID WHITE 45° DIAGONALS @ 8" SPACING INTERVALS)

(A) W10-1 24" DIA



(C) W10-1101 18"x24"



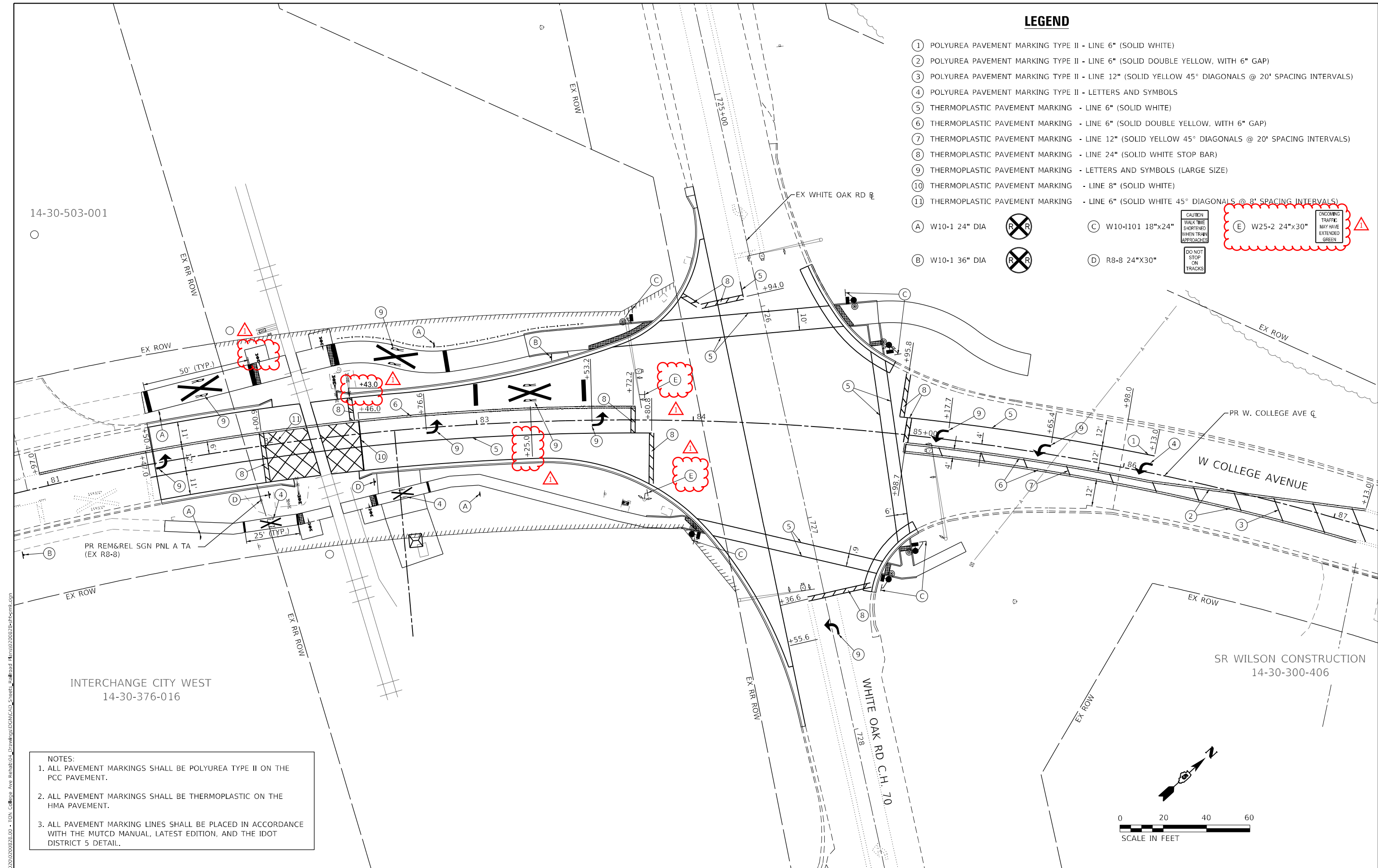
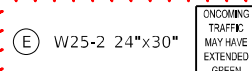
(E) W25-2 24"x30"



(B) W10-1 36" DIA



(D) R8-8 24"x30"



- NOTES:
1. ALL PAVEMENT MARKINGS SHALL BE POLYUREA TYPE II ON THE PCC PAVEMENT.
 2. ALL PAVEMENT MARKINGS SHALL BE THERMOPLASTIC ON THE HMA PAVEMENT.
 3. ALL PAVEMENT MARKING LINES SHALL BE PLACED IN ACCORDANCE WITH THE MUTCD MANUAL, LATEST EDITION, AND THE IDOT DISTRICT 5 DETAIL.

Farnsworth GROUP
2709 McGRAW DRIVE
BLOOMINGTON, ILLINOIS 61704
(309) 963-8435 / info@f-w.com

USER NAME - rstaley
DESIGNED - KLM
DRAWN - DRR
PLOT SCALE - 40,0000 ' / in.
PLOT DATE - 5/8/2025
CHECKED - ERB
DATE - 11/15/2024

REVISED - 05/19/2025
REVISED -
REVISED -
REVISED -

STATE OF ILLINOIS
DEPARTMENT OF TRANSPORTATION

PAVEMENT MARKING AND SIGNING PLAN
COLLEGE AVENUE

SCALE: 1" = 20' SHEET 1 OF 1 SHEETS STA. 81+50.00 TO STA. 84+22.64

F.A.U. RTE.	SECTION	COUNTY	TOTAL SHEETS	SHEET NO.
6352	20-00271-01-PV	McLEAN	48	27
CONTRACT NO. 91756				
ILLINOIS FED. AID PROJECT				

LANDSCAPING LEGEND

- TOPSOIL FURNISH AND PLACE, 4":
SEEDING CLASS 1A:
EROSION CONTROL BLANKET
- AGGREGATE SURFACE COURSE, TY A 6"

14-30-503-001

KRUGER ROBERT T
14-30-100-008

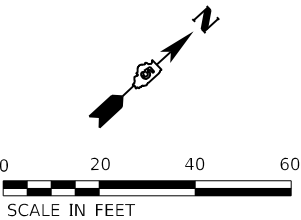
INTERCHANGE CITY WEST
14-30-376-016

SR WILSON CONSTRUCTION
14-30-300-406

STATE OF ILLINOIS
DEPARTMENT OF TRANSPORTATION

LANDSCAPING PLAN
COLLEGE AVENUE

SCALE: 1" = 20' SHEET 1 OF 1 SHEETS STA. 81+50.00 TO STA. 84+22.64



Farnsworth
GROUP
2709 McGRAW DRIVE
BLOOMINGTON, ILLINOIS 61704
(309) 963-8435 / info@f-w.com

USER NAME	rstakey
DESIGNED	KLM
DRAWN	DRR
CHECKED	ERB
DATE	11/15/2024
PLOT SCALE	40,0000' / in.
PLOT DATE	5/8/2025

REVISED	05/19/2025
REVISED	
REVISED	
REVISED	

F.A.U. RTE.	SECTION	COUNTY	TOTAL SHEETS	SHEET NO.
6352	20-00271-01-PV	McLEAN	48	28
CONTRACT NO. 91756				
ILLINOIS FED. AID PROJECT				

TRAFFIC SIGNAL GENERAL NOTES:

1. THESE IMPROVEMENTS SHALL BE CONSTRUCTED IN ACCORDANCE WITH THE PLANS, SPECIFICATIONS, AND "STANDARD SPECIFICATIONS FOR ROAD AND BRIDGE CONSTRUCTION", ILLINOIS DEPARTMENT OF TRANSPORTATION, ADOPTED JANUARY 1, 2022.
2. THE LOCATION OF ALL UTILITIES SHALL BE FIELD VERIFIED BY THE CONTRACTOR BEFORE INSTALLATION OF ANY TRAFFIC SIGNAL COMPONENTS.
3. CONTRACTOR SHALL COORDINATE WITH RESIDENT ENGINEER AND ENGINEER OF RECORD WITH ANY PROPOSED OR NEEDED POST FOUNDATION LOCATION CHANGES PRIOR TO INSTALLATION.
4. ALL SURPLUS MATERIALS SHALL BE DISPOSED OF IN ACCORDANCE WITH ARTICLE 202.03 OF THE STANDARD SPECIFICATIONS.
5. NO ADDITIONAL COMPENSATION SHALL BE ALLOWED FOR PLACING CONDUIT AT GREATER THAN 2 FT. MINIMUM DEPTH TO AVOID OBSTACLES SUCH AS UNDERGROUND UTILITIES.
6. THE CONTRACTOR IS RESPONSIBLE FOR THE COST OF UNCOVERING OR HAND-DIGGING AROUND UTILITIES AS NECESSARY. NO ADDITIONAL COMPENSATION WILL BE ALLOWED.
7. ALL PROPOSED TRAFFIC SIGNAL POSTS SHALL BE GROUNDED IN ACCORDANCE WITH NEC REQUIREMENTS.
8. ALL AREAS DISTURBED FOR TRAFFIC SIGNAL CONSTRUCTION SHALL BE RESTORED TO THEIR EXISTING CONDITION IN ACCORDANCE WITH THE STANDARD SPECIFICATIONS AND THE PROJECT SPECIFICATIONS.
9. THE BOTTOM OF PEDESTRIAN SIGNAL HEADS SHALL MAINTAIN AN 8 FT CLEARANCE FROM THE FINISHED GROUND.
10. CONDUIT LOCATIONS SHOWN ON PLANS ARE DIAGRAMMATIC IN NATURE AND MAY BE VARIED TO SUIT FIELD CONDITIONS. CONTRACTOR SHALL SUBMIT ALL SUCH REQUESTS TO THE ENGINEER FOR REVIEW.
11. BACKFILL MATERIAL UNDER PROPOSED ROADWAY PAVEMENT, CURB AND GUTTER, SIDEWALK, AND TRAIL PAVEMENT FOR TRENCH AND BACKFILL SHALL BE CONTROLLED LOW-STRENGTH MATERIAL AND SHALL BE INCLUDED IN THE UNIT PRICE FOR CONDUIT.
12. ALL BRACKET MOUNTED HEADS SHALL BE MOUNTED SO THAT NO PART OF THE SIGNAL HEAD SHALL BE WITHIN 2 FEET OF THE FACE OF CURB.
13. ALL THREADS OR BOLTS USED IN ASSEMBLY OF TRAFFIC SIGNAL COMPONENTS SHALL BE COATED WITH A NON-LEAD BASED ANTI-SEIZE COMPOUND PRIOR TO ASSEMBLY.

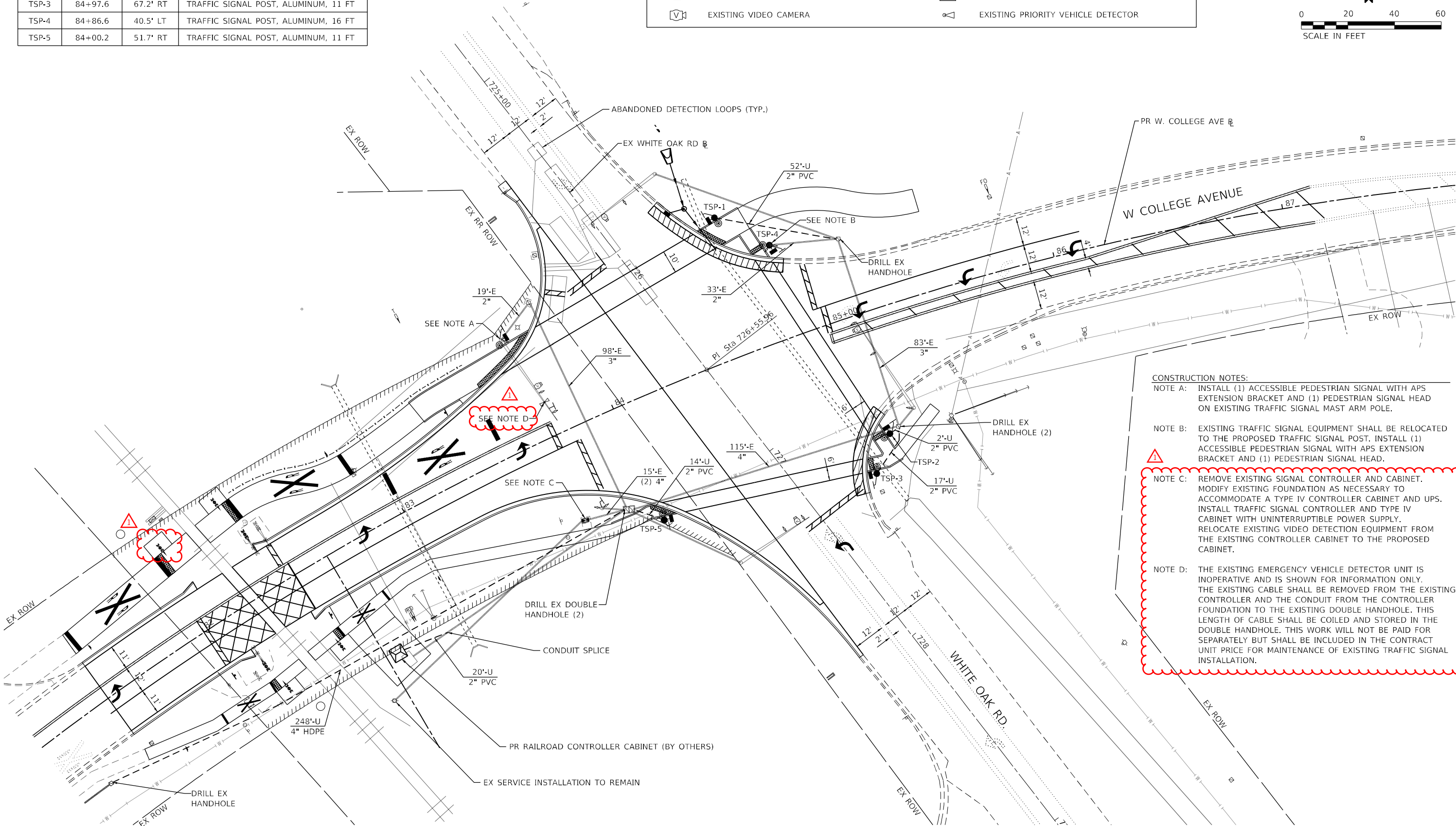
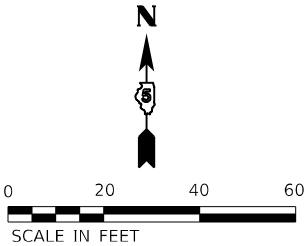
TRAFFIC SIGNAL QUANTITIES					
PAY ITEM NO.	ITEM	UNIT	COLLEGE AVE & WHITE OAK	INTERCONNECT	TOTAL PROJECT QUANTITY
			QUANTITY	QUANTITY	
81028350	UNDERGROUND CONDUIT, PVC, 2" DIA.	FOOT	91		91
85000200	MAINTENANCE OF EXISTING TRAFFIC SIGNAL INSTALLATION	EACH	1		1
86200200	UNINTERRUPTABLE POWER SUPPLY, STANDARD	EACH	1		1
87300925	ELECTRIC CABLE IN CONDUIT, TRACER, NO. 14 1C	FOOT		161	161
87301225	ELECTRIC CABLE IN CONDUIT, SIGNAL NO. 14 3C	FOOT	2,480		2,480
87301750	ELECTRIC CABLE IN CONDUIT, RAILROAD, NO. 14 3C	FOOT	161		161
87301805	ELECTRIC CABLE IN CONDUIT, SERVICE, NO. 6 2 C	FOOT	103		103
87301900	ELECTRIC CABLE IN CONDUIT, EQUIPMENT GROUNDING CONDUCTOR, NO. 6 1C	FOOT	122		122
87502650	TRAFFIC SIGNAL POST, ALUMINUM 11 FT.	EACH	4		4
87502700	TRAFFIC SIGNAL POST, ALUMINUM 16 FT.	EACH	1		1
87800100	CONCRETE FOUNDATION, TYPE A	FOOT	12		12
87900200	DRILL EXISTING HANDHOLE	EACH	4	2	6
88102717	PEDESTRIAN SIGNAL HEAD, LED, 1-FACE, BRACKET MOUNTED WITH COUNTDOWN TIMER	EACH	6		6
89502215	MODIFY EXISTING CONTROLLER FOUNDATION	EACH	1		1
89500100	RELOCATE EXISTING SIGNAL HEAD	EACH	2		2
X0323071	SPARE FULL ACTUATED CONTROLLER, SPECIAL	EACH	1		1
X0326836	REMOVE AND REINSTALL VIDEO CAMERA AND EQUIPMENT	EACH	1		1
X8100105	CONDUIT SPLICE	EACH	1		1
X8108242	UNDERGROUND CONDUIT, HDPE, 4" DIA.	FOOT		248	248
X8140115	HANDHOLE TO BE ADJUSTED	EACH	1		1
X8570226	FULL-ACTUATED CONTROLLER AND TYPE IV CABINET, SPECIAL	EACH	1		1
X8710103	ETHERNET SWITCH	EACH	1		1
X8760002	APS EXTENSION BRACKET	EACH	2		2
X8760200	ACCESSIBLE PEDESTRIAN SIGNALS	EACH	6		6
X8950105	REMOVE EXISTING TRAFFIC CONTROLLER AND CABINET	EACH	1		1



MODEL Default
FILE Name: 202002020028-00 - TDH College Ave Rehab04_DrawingIDEN/CAD_Sheets_Roadroad - Rns02002002028-01-15_Notes.dgn

TRAFFIC SIGNAL POST DATA			
NO.	STATION	OFFSET	DESCRIPTION
TSP-1	84+69.3	59.6' LT	TRAFFIC SIGNAL POST, ALUMINUM, 11 FT
TSP-2	85+10.5	54.6' RT	TRAFFIC SIGNAL POST, ALUMINUM, 11 FT
TSP-3	84+97.6	67.2' RT	TRAFFIC SIGNAL POST, ALUMINUM, 11 FT
TSP-4	84+86.6	40.5' LT	TRAFFIC SIGNAL POST, ALUMINUM, 16 FT
TSP-5	84+00.2	51.7' RT	TRAFFIC SIGNAL POST, ALUMINUM, 11 FT

TRAFFIC SIGNALS LEGEND			
	EXISTING SIGNAL HEAD WITH BACKPLATE		PROPOSED ACCESSIBLE PEDESTRIAN SIGNAL
	PROPOSED TRAFFIC SIGNAL POST		PROPOSED PEDESTRIAN SIGNAL HEAD
	PROPOSED CONDUIT		EXISTING SERVICE INSTALLATION
	EXISTING HANDHOLE		PROPOSED TRAFFIC SIGNAL CONTROLLER
	EXISTING VIDEO CAMERA		EXISTING PRIORITY VEHICLE DETECTOR



CONSTRUCTION NOTES:	
NOTE A:	INSTALL (1) ACCESSIBLE PEDESTRIAN SIGNAL WITH APS EXTENSION BRACKET AND (1) PEDESTRIAN SIGNAL HEAD ON EXISTING TRAFFIC SIGNAL MAST ARM POLE.
NOTE B:	EXISTING TRAFFIC SIGNAL EQUIPMENT SHALL BE RELOCATED TO THE PROPOSED TRAFFIC SIGNAL POST. INSTALL (1) ACCESSIBLE PEDESTRIAN SIGNAL WITH APS EXTENSION BRACKET AND (1) PEDESTRIAN SIGNAL HEAD.
NOTE C:	REMOVE EXISTING SIGNAL CONTROLLER AND CABINET. MODIFY EXISTING FOUNDATION AS NECESSARY TO ACCOMMODATE A TYPE IV CONTROLLER CABINET AND UPS. INSTALL TRAFFIC SIGNAL CONTROLLER AND TYPE IV CABINET WITH UNINTERRUPTIBLE POWER SUPPLY. RELOCATE EXISTING VIDEO DETECTION EQUIPMENT FROM THE EXISTING CONTROLLER CABINET TO THE PROPOSED CABINET.
NOTE D:	THE EXISTING EMERGENCY VEHICLE DETECTOR UNIT IS INOPERATIVE AND IS SHOWN FOR INFORMATION ONLY. THE EXISTING CABLE SHALL BE REMOVED FROM THE EXISTING CONTROLLER AND THE CONDUIT FROM THE CONTROLLER FOUNDATION TO THE EXISTING DOUBLE HANDHOLE. THIS LENGTH OF CABLE SHALL BE COILED AND STORED IN THE DOUBLE HANDHOLE. THIS WORK WILL NOT BE PAID FOR SEPARATELY BUT SHALL BE INCLUDED IN THE CONTRACT UNIT PRICE FOR MAINTENANCE OF EXISTING TRAFFIC SIGNAL INSTALLATION.

MODEL: Default
FILE NAME: 20250203002020.00 - TDV College Ave Rehabilitation-DEN/CAD_Sheet- railroad_Runs020020202020-15_Signal Layout-White Oak.dgn

Farnsworth GROUP
2709 McGRAW DRIVE
BLOOMINGTON, ILLINOIS 61704
(309) 963-8435 / info@f-w.com

USER NAME	rstaley
DESIGNED	JSG
DRAWN	DRR
CHECKED	RMM
DATE	11/15/2024
PLOT SCALE	40,0000' / in.
PLOT DATE	5/8/2025

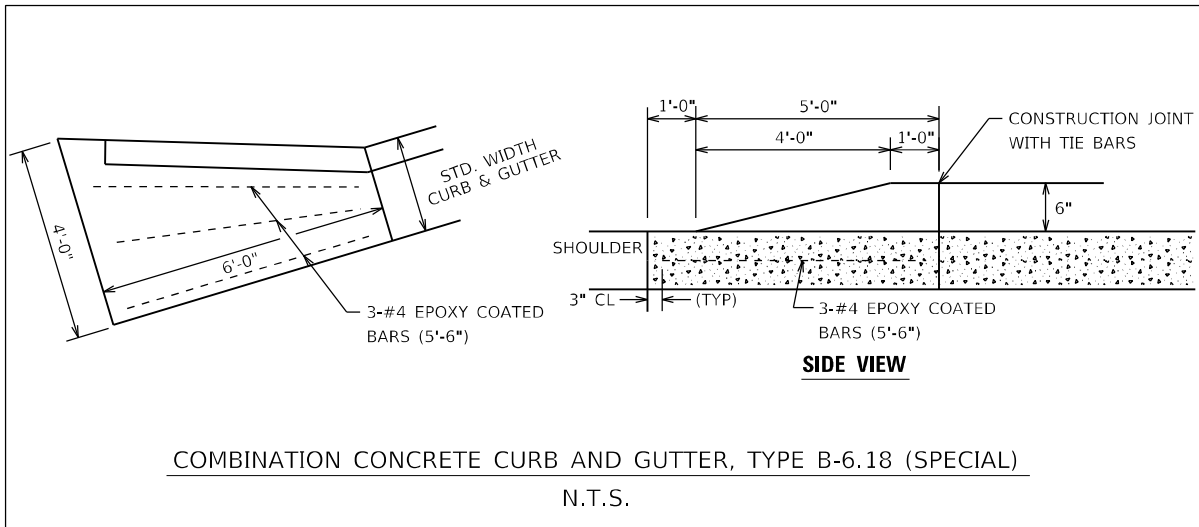
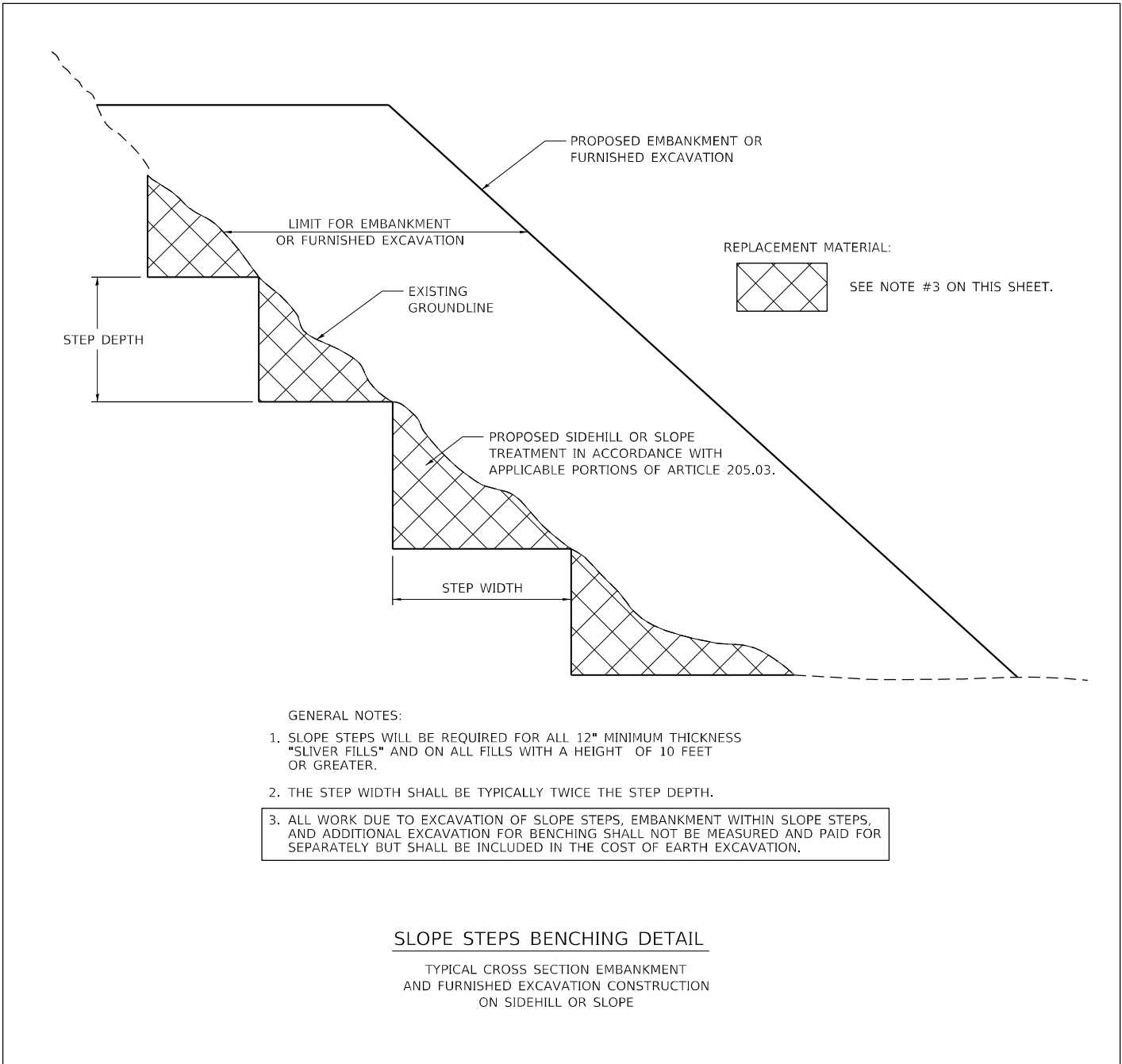
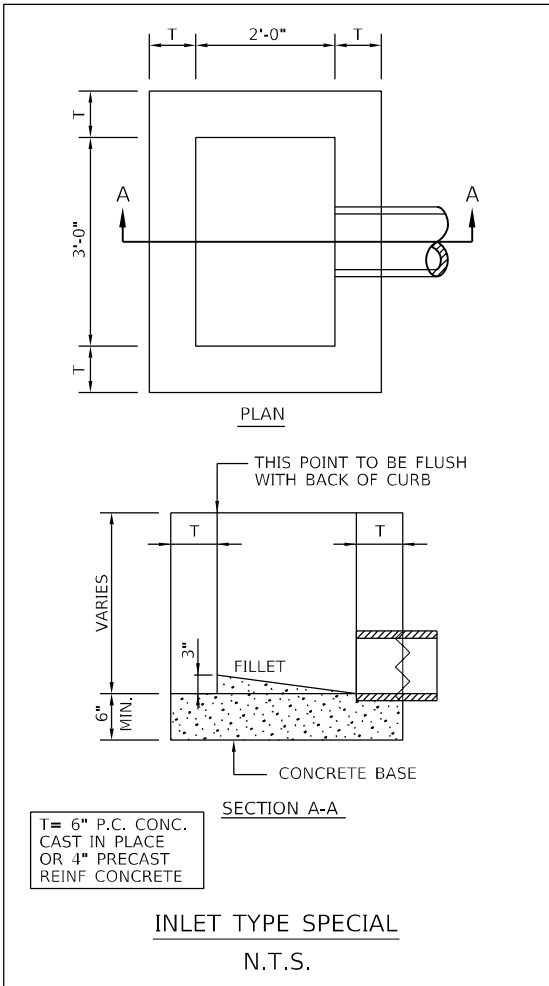
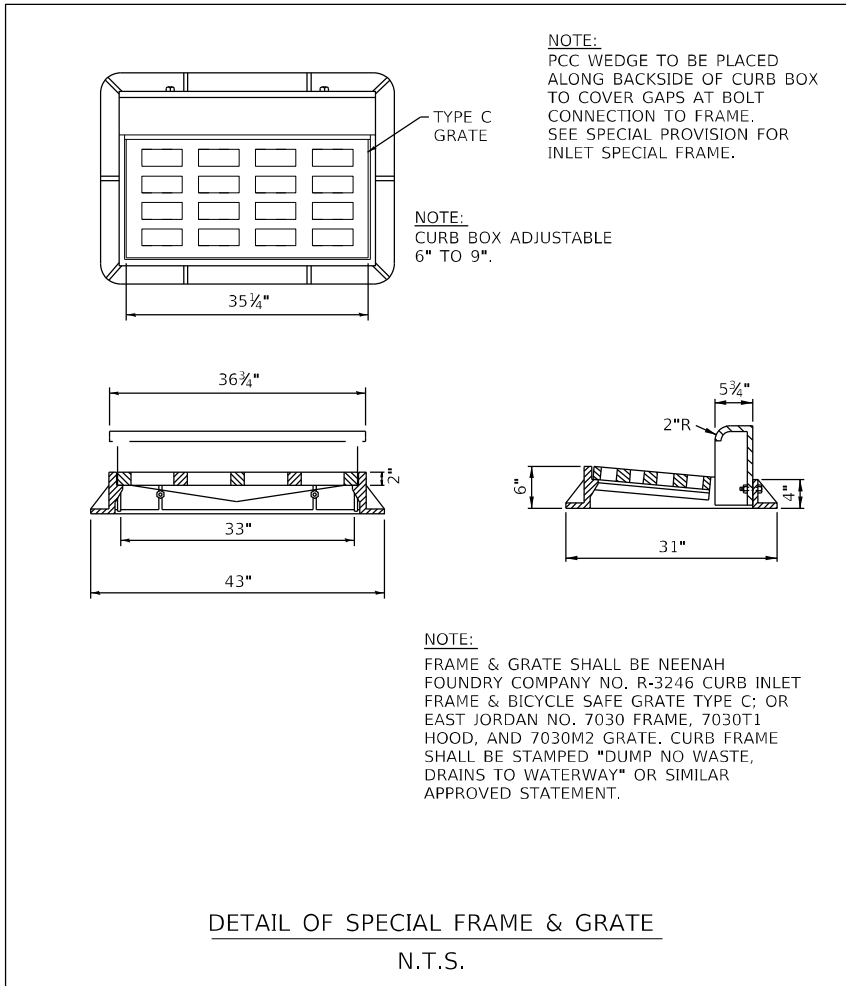
REVISED	05/19/2025
REVISED	
REVISED	
REVISED	

STATE OF ILLINOIS
DEPARTMENT OF TRANSPORTATION

TRAFFIC SIGNAL INSTALLATION PLAN
COLLEGE AVENUE & WHITE OAK ROAD

SCALE: 1"=20' SHEET 1 OF 1 SHEETS STA. TO STA.

F.A.U. RTE.	SECTION	COUNTY	TOTAL SHEETS	SHEET NO.
6352	20-00271-01-PV	McLEAN	48	37
CONTRACT NO. 91756				
ILLINOIS FED. AID PROJECT				



MODEL Detail
FILE Name: 202002280028.00 - IDN College Ave Rehabilitation_DrawingIDNCAID_Sheet: e41road - I:\ns02\00280028.00\enferlec_details.dgn

FINAL	SURVEYED	BY	DATE
SURVEY	PLOTTED		
NOTE BOOK	TEMPLATE		
NO.	AREAS CHECKED		

ORIGINAL	SURVEYED	BY	DATE
SURVEY	PLOTTED		
NOTE BOOK	TEMPLATE		
NO.	AREAS CHECKED		

MODEL: Default
FILE NAME: J:\2020\20200228.00 - Ton College Ave Rehabilitation\Drawings\CD\Cross Sections\College Ave



USER NAME	rstaley
DESIGNED	KLM / JJO
DRAWN	JJO
PLOT SCALE	20.0000' / in.
PLOT DATE	5/8/2025

REVIS	05/19/2025
REVIS	
REVIS	
REVIS	

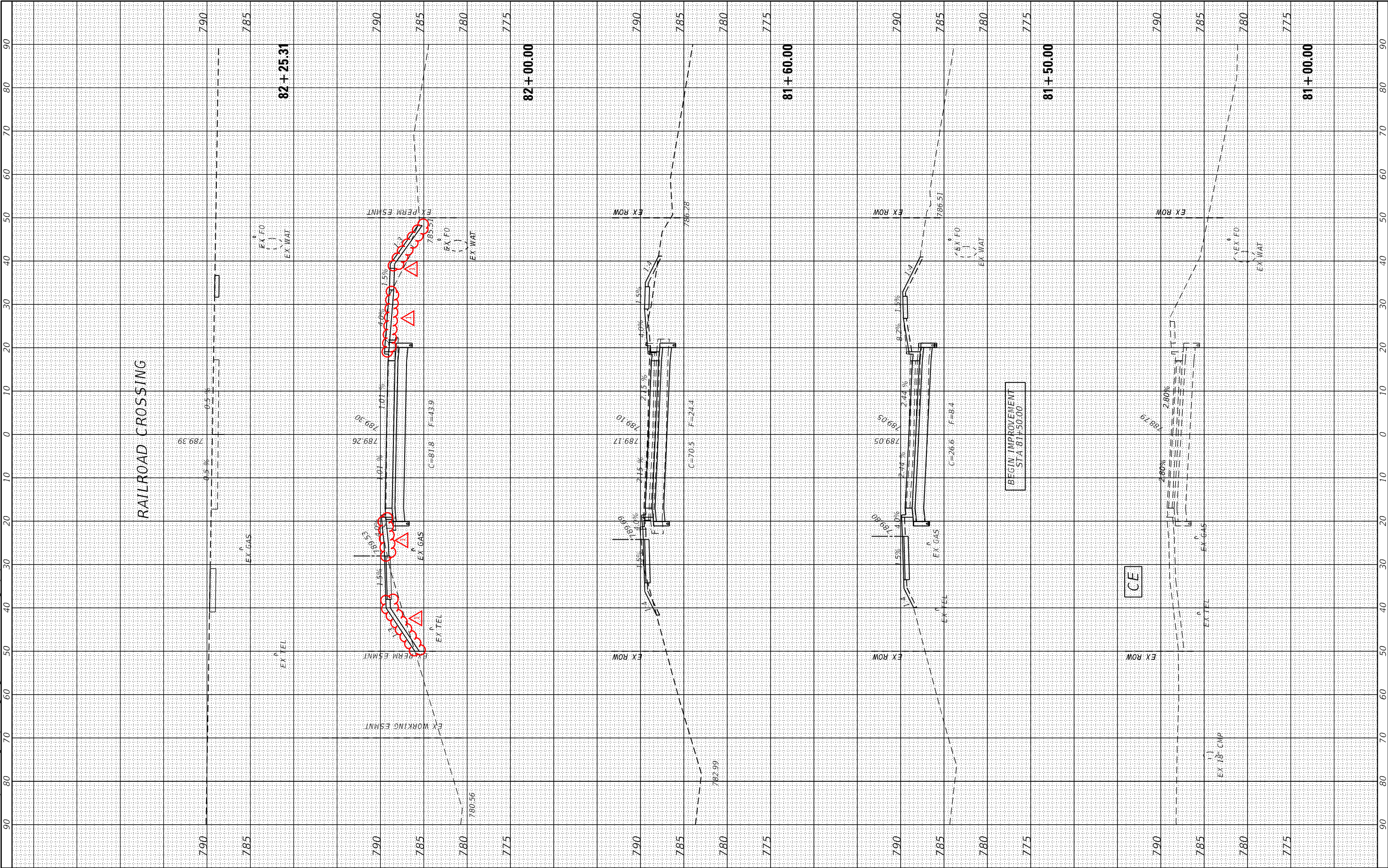
REVIS	05/19/2025
REVIS	
REVIS	
REVIS	

STATE OF ILLINOIS
DEPARTMENT OF TRANSPORTATION

CROSS SECTIONS
COLLEGE AVENUE

SCALE: H1:10 / V1:5 SHEET 1 OF 3 SHEETS STA. : 81+00.00 TO STA. : 82+25.31

F.A.U. RTE.	SECTION	COUNTY	TOTAL SHEETS	SHEET NO.
6352	20-00271-01-PV	McLEAN	48	46
CONTRACT NO. 91756				
ILLINOIS FED. AID PROJECT				



FINAL SURVEY NO.	SURVEYED PLOTTED NOTE BOOK AREAS CHECKED	BY	DATE

ORIGINAL SURVEY NO.	SURVEYED PLOTTED NOTE BOOK AREAS CHECKED	BY	DATE

MODEL: Default
FILE NAME: J:\2020\02\0002828.00 - Ton College Ave Rehabilitation\Drawings\CD\0282828_College Ave.dwg
PLT: J:\2020\02\0002828.00 - Ton College Ave Rehabilitation\Drawings\CD\0282828_College Ave.dwg



USER NAME	rstaley
PLOT SCALE	20.0000' / in.
PLOT DATE	5/8/2025

DESIGNED	KLM / JJO
DRAWN	JJO
CHECKED	ERB
DATE	11/15/2024

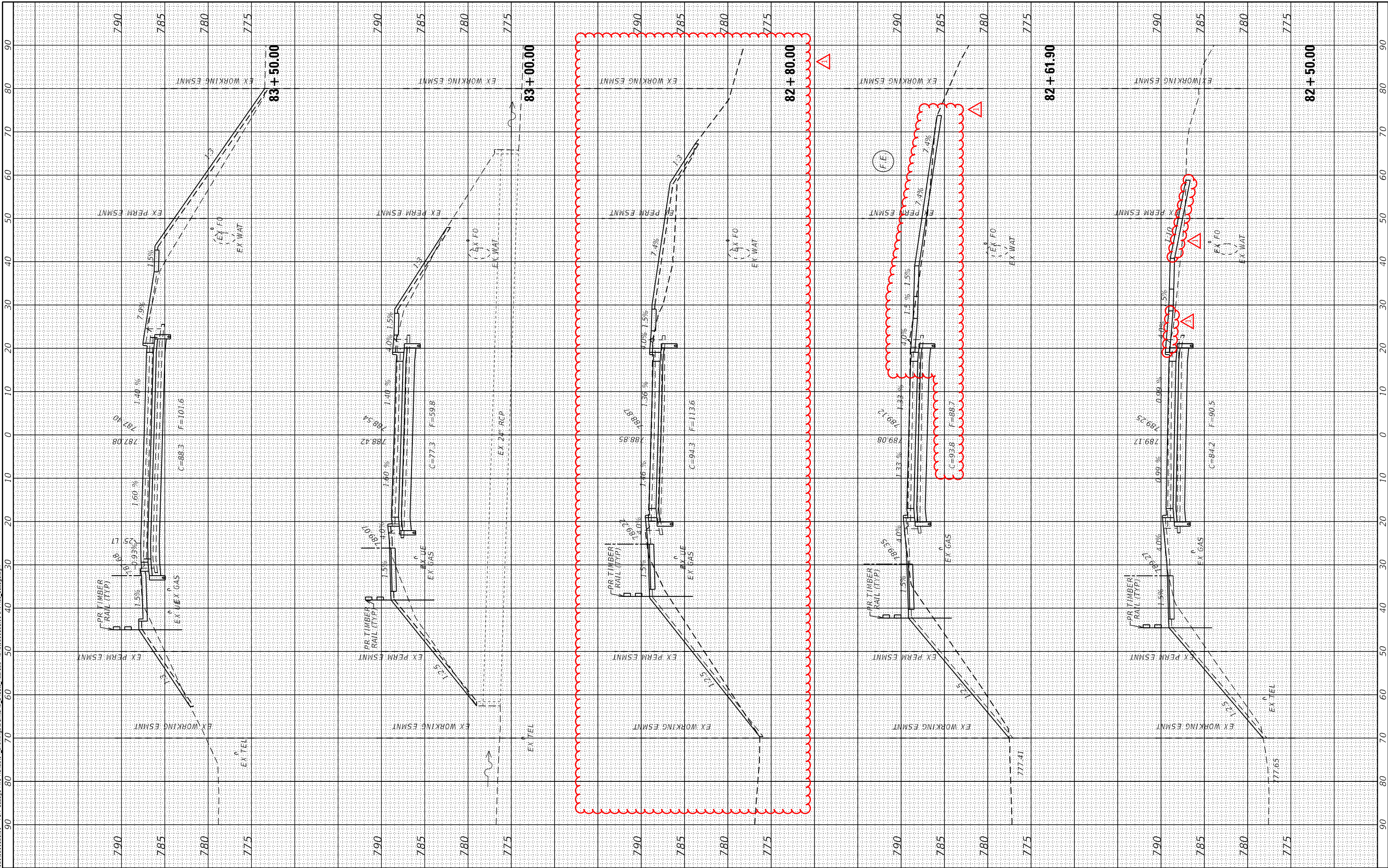
REVISED	05/19/2025
REVISED	
REVISED	
REVISED	

STATE OF ILLINOIS
DEPARTMENT OF TRANSPORTATION

CROSS SECTIONS
COLLEGE AVENUE

SCALE: H1:10 / V1:5
SHEET 2 OF 3 SHEETS
STA. 82+50.00 TO STA. 84+00.00

F.A.U. RTE.	SECTION	COUNTY	TOTAL SHEETS	SHEET NO.
6352	20-00271-01-PV	McLEAN	48	47
CONTRACT NO. 91756				
ILLINOIS FED. AID PROJECT				



FINAL SURVEY NOTE BOOK NO.	SURVEYED PLOTTED TEMPLATE AREAS CHECKED	BY	DATE

ORIGINAL SURVEY NOTE BOOK NO.	SURVEYED PLOTTED TEMPLATE AREAS CHECKED	BY	DATE

MODEL: Default
FILE NAME: J:\2020\20200228.00 - TON College Ave Renovation.dwg
PLOT DATE: 03/28/2025
PLOT SCALE: 20.0000' / in.
PLOT DATE: 03/28/2025



USER NAME	rstaley
DESIGNED	- KLM / JJO
DRAWN	- JJO
CHECKED	- ERB
DATE	- 03/28/2025

REVISED	- 05/19/2025
REVISED	-
REVISED	-
REVISED	-

STATE OF ILLINOIS
DEPARTMENT OF TRANSPORTATION

CROSS SECTIONS
COLLEGE AVENUE

SCALE: H1:10 / V1:5 SHEET 3 OF 3 SHEETS STA. 84+22.64 TO STA. 84+43.38

F.A.U. RTE.	SECTION	COUNTY	TOTAL SHEETS	SHEET NO.
6352	20-00271-01-PV	McLEAN	48	48
CONTRACT NO. 91756				
ILLINOIS FED. AID PROJECT				

