

STATE OF ILLINOIS  
DEPARTMENT OF TRANSPORTATION

F.A.P. RTE.	SECTION	COUNTY	TOTAL SHEETS	SHEET NO.
VAR.	2025-1065-TR	VARIOUS	24	1
		ILLINOIS	CONTRACT NO. 62Y10	

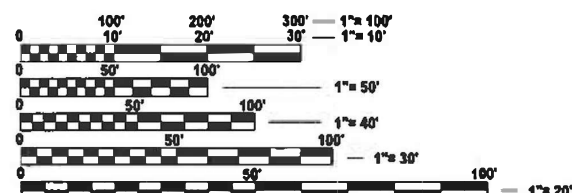
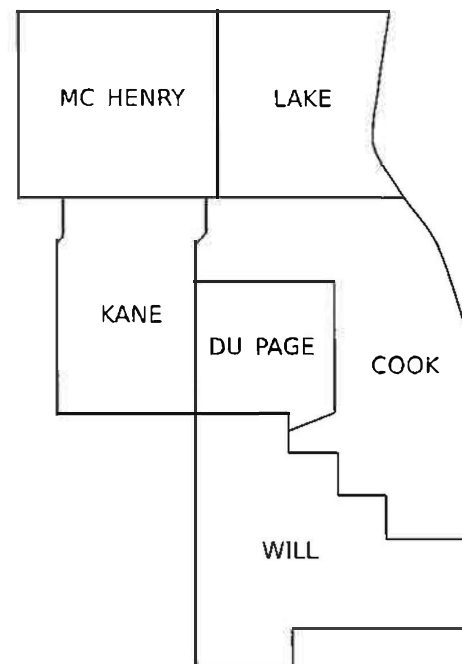
FOR INDEX OF SHEETS, SEE SHEET NO. 2

IMPROVEMENTS ARE AT VARIOUS LOCATIONS  
WITHIN DISTRICT ONE

# PROPOSED HIGHWAY PLANS

VARIOUS COUNTIES  
SECTION 2025-1064-TR  
DEAD TREE REMOVAL  
DISTRICTWIDE

C-91-186-25



FULL SIZE PLANS HAVE BEEN PREPARED USING STANDARD  
ENGINEERING SCALES. REDUCED SIZED PLANS WILL NOT  
CONFORM TO STANDARD SCALES. IN MAKING MEASUREMENTS  
ON REDUCED PLANS, THE ABOVE SCALES MAY BE USED.

J.U.L.I.E.  
JOINT UTILITY LOCATION INFORMATION FOR EXCAVATION  
1-800-892-0123  
OR 811

PROJECT ENGINEER: MELISSA DEL ROSARIO (847) 705-4391  
PROJECT MANAGER: GIOVANNA ZAFFINA (847) 705-4171

CONTRACT NO. 62Y10

GROSS LENGTH = X.XX FT. = X.XXX MILE  
NET LENGTH = X.XX FT. = X.XXX MILE

STATE OF ILLINOIS  
DEPARTMENT OF TRANSPORTATION

SUBMITTED March 25, 2025  
[Signature] REGIONAL ENGINEER

May 9, 2025  
[Signature] ENGINEER OF DESIGN AND ENVIRONMENT

May 9, 2025  
[Signature] DIRECTOR OF HIGHWAYS PROJECT IMPLEMENTATION

PRINTED BY THE AUTHORITY  
OF THE STATE OF ILLINOIS

INDEX OF SHEETS

STATE STANDARDS

GENERAL NOTES

SHEET NO.

DESCRIPTION

STANDARD NO.

DESCRIPTION

1	TITLE SHEET
2	INDEX OF SHEETS, STATE STANDARDS, AND GENERAL NOTES
3	SUMMARY OF QUANTITIES
4	LOCATION AND WORK SCHEDULE
5	LOCATION BASED WORK OVERVIEW
6-19	LOCATION MAPS
20	DEAD TREE REMOVAL SAMPLE WORK ORDER
21	DEAD TREE REMOVAL STUMP DETAILS
22	PRUNING FOR SAFETY AND EQUIPMENT CLEARANCE DETAIL
23	TRAFFIC CONTROL AND PROTECTION FOR SIDE ROADS, INTERSECTIONS, & DRIVEWAYS (TC-10)
24	TRAFFIC CONTROL DETAIL FOR FREEWAY SHOULDER CLOSURES AND PARTIAL RAMP CLOSURE (TC-17)

701001-02	OFF-ROAD OPERATIONS, 2L, 2W, MORE THAN 15' AWAY
701006-05	OFF-ROAD OPERATIONS, 2L, 2W, 15' TO 24" FROM PAVEMENT EDGE
701106-02	OFF-ROAD OPERATIONS, MORE THAN 15' AWAY
701201-05	LANE CLOSURE, 2L, 2W, DAY ONLY, FOR SPEEDS ≥ 45 MPH
701301-04	LANE CLOSURE, 2L, 2W, SHORT TIME OPERATIONS
701311-03	LANE CLOSURE, 2L, 2W MOWING OPERATIONS - DAY ONLY
701421-08	LANE CLOSURE, MULTILANE, DAY OPERATION ONLY, FOR SPEEDS ≥ 45 MPH TO 55MPH
701422-10	LANE CLOSURE, MULTILANE, FOR SPEEDS ≥ 45 MPH TO 55 MPH
701427-05	LANE CLOSURE, MULTILANE, INTERMITTENT OR MOVING OPERATION, FOR SPEEDS ≤ 40 MPH
701501-06	URBAN LANE CLOSURE, 2L, 2W, UNDIVIDED
701502-09	URBAN LANE CLOSURE, 2L, 2W, BI-DIRECTIONAL LEFT TURN LANE
701601-09	URBAN LANE CLOSURE, MULTILANE, 1W OR 2W WITH NON-TRAVERSABLE MEDIAN
701606-10	URBAN SINGLE LANE CLOSURE, MULTILANE, 2W WITH MOUNTABLE MEDIAN
701611-01	URBAN HALF CLOSURE, MULTILANE, 2W WITH MOUNTABLE MEDIAN
701701-10	URBAN LANE CLOSURE, MULTILANE INTERSECTION
701801-06	SIDEWALK, CORNER OR CROSSWALK CLOSURE
701901-10	TRAFFIC CONTROL DEVICES
701101-05	OFF-RD OPERATIONS, MULTILANE, 15' TO 24" FROM PAVEMENT EDGE
701426-09	LANE CLOSURE, MULTILANE, INTERMITTENT OR MOVING OPER., FOR SPEEDS ≥ 45 MPH

BEFORE STARTING ANY EXCAVATION, THE CONTRACTOR SHALL CALL "JULIE AT (800) 892-0123 OR 811 FOR FIELD LOCATIONS OF BURIED ELECTRIC, TELEPHONE AND GAS FACILITIES, (48 HOURS NOTIFICATION IS REQUIRED).

THE CONTRACTOR WILL NOT BE ALLOWED TO SET UP A YARD OR FIELD OFFICE ON STATE PROPERTY WITHOUT WRITTEN PERMISSION FROM THE DEPARTMENT.

IT SHALL BE THE CONTRACTOR'S RESPONSIBILITY TO VERIFY ALL CONDITIONS EXISTING IN THE FIELD PRIOR TO STARTING WORK ORDERS.

THE CONTRACTOR SHALL CONTACT KALPANA KANNAN-HOSADURGA, DISTRICT ONE TRAFFIC CONTROL SUPERVISOR AT KALPANA.KANNAN-HOSADURGA@ILLINOIS.GOV.A MINIMUM OF (72) HOURS IN ADVANCE OF BEGINNING WORK.

THE CONTRACTOR SHALL REQUEST AND GAIN APPROVAL FROM THE ILLINOIS DEPARTMENT OF TRANSPORTATION'S EXPRESSWAY TRAFFIC OPERATIONS ENGINEER AT WWW.IDOTLCS.COM TWENTY-FORU (24) HOURS IN ADVANCE OF ALL DAILY LANE, RAMP, AND SHOULDER CLOSURES AND (7) DAYS IN ADVANCE OF ALL PERMANENT AND WEEKEND CLOSURES ON FREEWAYS AND/OR EXPRESSWAYS IN DISTRICT ONE. THIS ADVANCE NOTIFICATION IS CALCULATED BASED ON WORK WEEK OF MONDAY THROUGH FRIDAY AND SHALL NO INCLUDE WEEKENDS OR HOLIDAYS.

THE CONTRACTOR SHALL BE REQUIRED TO PROVIDE ACCESS TO ABUTTING PROPERTY AT ALL TIMES DURING THE CONSTRUCTION OF THIS PROJECT.

THE CONTRACTOR SHALL USE CARE IN TREE REMOVAL OPERATIONS NEAR ANY AND ALL EXISTING ITEMS THAT WILL NOT BE REMOVED. ANY DAMAGE DONE TO EXISTING ITEMS BY THE CONTRACTOR SHALL BE REPAIRED AT THE CONTRACTOR'S OWN EXPENSE TO THE SATISFACTION OF THE ENGINEER.

THE CONTRACTOR SHALL MAINTAIN PEDESTRIAN ACCESS AT ALL TIMES DURING CONSTRUCTION.

THE CONSTRUCTION LIMITS WILL BE STAKED AND APPROVED BY THE ENGINEER PRIOR TO COMMENCING CONSTRUCTION. THE CONSTRUCTION LIMITS MAY BE ADJUSTED BY THE ENGINEER TO PRESERVE TREES AND NO ADDITIONAL COM-PENSATION WILL BE PAID TO THE CONTRACTOR FOR CHANGES IN CONSTRUCTION LIMITS.

DURING CONSTRUCTION OPERATIONS, WHEN ANY LOOSE MATERIAL IS DEPOSITED IN THE FLOW LINE OF DITCHES, GUTTERS, OR DRAINAGE STRUCTURES SO THAT THE NATURAL FLOW OF WATER IS OBSTRUCTED, THE MATERIAL SHALL BE REMOVED AT THE CLOSE OF EACH WORKING DAY. THIS WORK IS CONSIDERED AS PART OF CLEAN-UP.

TO AVOID IMPACTS TO THE STATE AND FEDERALLY-THREATENED NORTHERN LONG-EARED BAT (MYOTIS SEPTENTRIONALIS) AND ITS HABITAT, CLEARING OF POTENTIAL HABITAT TREES SHALL NOT BE PERMITTED FROM APRIL 1ST THROUGH OCTOBER 31ST. THE ENGINEER SHALL HAVE THE FINAL DETERMINATION OF TREE REMOVAL.

DO NOT SCALE PLANS FOR CONSTRUCTION DIMENSIONS.

THE CONTRACTOR SHALL ADHERE TO ARTICLE 107.23 OF THE CURRENT IDOT STANDARD SPECIFICATIONS BOOK.

WHEN HERBICIDE WORK IS SPECIFIED AND AUTHORIZED, THE CONTRACTOR SHALL HAVE A LICENSED APPLICATOR ON THE WORK SITE TO PERFORM SAID WORK UNDER THE DIRECT SUPERVISION OF THE RESIDENT ENGINEER.

TREE REMOVAL PLANS WILL BE GIVEN AT THE PRECONSTRUCTION MEETING.

MODEL: GenNotesSh05 [Sheet]  
FILE NAME: c:\pw\_work\idot\delrosarios\1090999\0111525-sh1-gennote.dgn

	USER NAME = melissa.delrosario	DESIGNED -	REVISED -	STATE OF ILLINOIS DEPARTMENT OF TRANSPORTATION	INDEX OF SHEETS, STATE STANDARDS, AND GENERAL NOTES				F.A RTE.	SECTION	COUNTY	TOTAL SHEETS	SHEET NO.
		DRAWN -	REVISED -						VAR	2025-1065-TR	VAR	24	2
	PLOT SCALE = 0.16666633 ' / in.	CHECKED -	REVISED -						CONTRACT NO. 62Y10				
	PLOT DATE = 5/7/2025	DATE -	REVISED -		SCALE:	SHEET	OF 24 SHEETS	STA.	TO STA.	ILLINOIS FED. AID PROJECT			



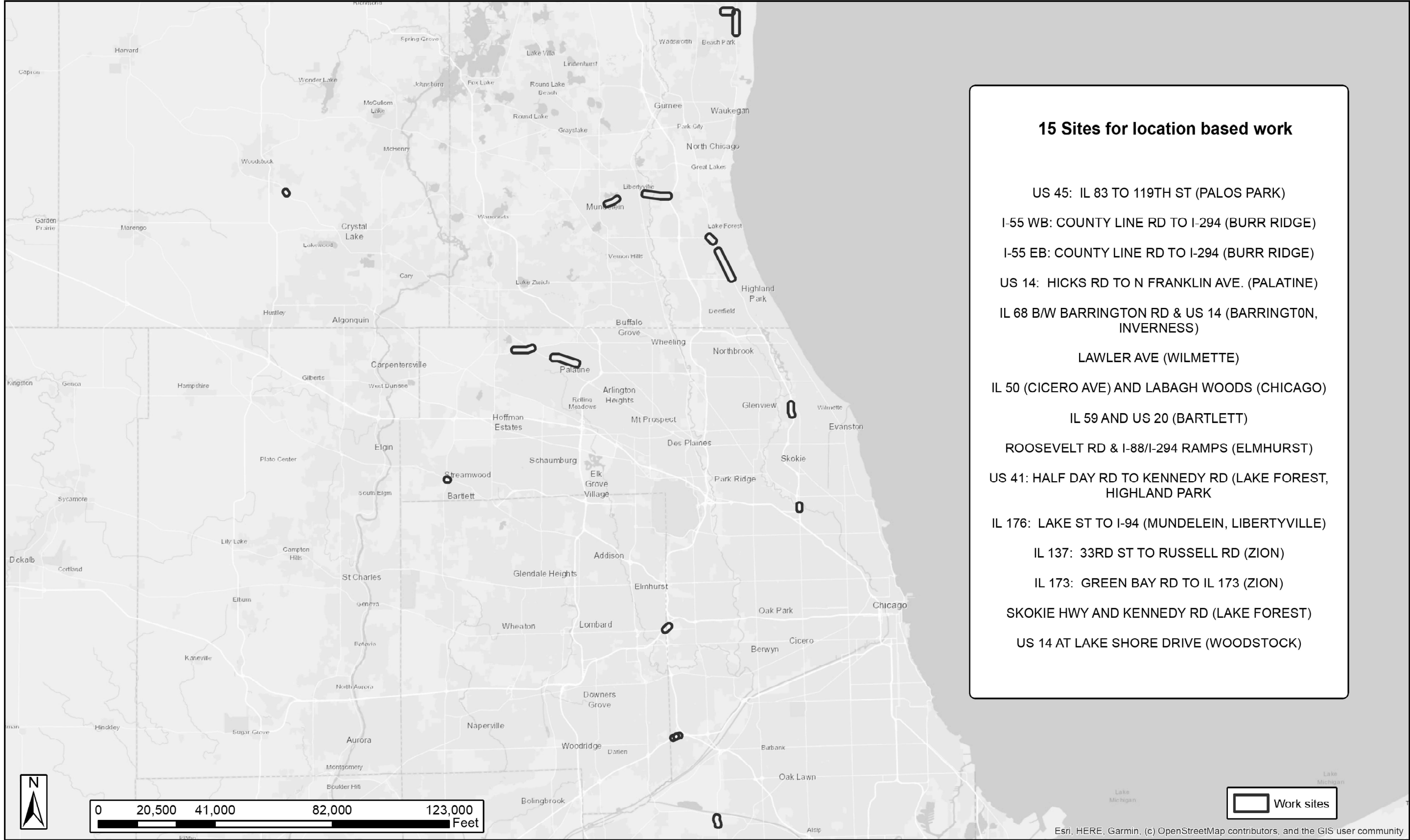
MODEL: SQ001 [Sheet]  
FILE NAME: c:\p\\_work\pwt\illinois.gov\id109099\ID111525-sh-SQ.dgn

SUMMARY OF QUANTITIES					TYPE      CODE					
					URBAN	URBAN	URBAN	URBAN	URBAN	URBAN
					ROADWAY					
					100% STATE					
	Code No.	Item	Unit	Total Quantity	0031					
	20100110	TREE REMOVAL (6 TO 15 UNITS DIAMETER)	UNIT	1667	1667	0	0			
	20100210	TREE REMOVAL (OVER 15 UNITS DIAMETER)	UNIT	1274	1274	0	0			
	20101300	TREE PRUNING (1 TO 10 INCH DIAMETER)	EACH	10	10	0	0			
	20101350	TREE PRUNING (OVER 10 INCH DIAMETER)	EACH	80	80	0	0			
	67100100	MOBILIZATION	L SUM	1	1	0	0			
	X2010100	TREE LIMB REMOVAL (4 TO 10 INCHES DIAMETER)	EACH	21	21	0	0			
	X2010101	TREE LIMB REMOVAL (4 TO 10 INCHES DIAMETER), EXPEDITED	EACH	1	1	0	0			
	X2010106	TREE REMOVAL (UNDER 6 UNITS DIAMETER)	UNIT	200	200	0	0			
	X2010110	TREE REMOVAL (6 TO 15 UNITS DIAMETER) EXPEDITED	UNIT	225	225	0	0			
	X2010200	TREE LIMB REMOVAL (OVER 10 INCHES DIAMETER)	EACH	10	10	0	0			
	X2010201	TREE LIMB REMOVAL (OVER 10 INCHES DIAMETER), EXPEDITED	EACH	6	6	0	0			
	X2010210	TREE REMOVAL (OVER 15 UNITS DIAMETER), EXPEDITED	UNIT	200	200	0	0			
	X2010305	TREE PRUNING (SPECIAL)	UNIT	50	50	0	0			
	X2010310	TREE REMOVAL (SPECIAL)	UNIT	5	5	0	0			
	X2010350	TREE REMOVAL, ACRES (SPECIAL)	ACRE	14	14	0	0			
	X2010400	STUMP REMOVAL ONLY	UNIT	109	109	0	0			
	X2010514	SELECTIVE CLEARING	ACRE	0.5	0.5	0	0			
	X2010516	SELECTIVE CLEARING	UNIT	173	173	0	0			
	X2011300	TREE PRUNING (1 TO 10 INCH DIAMETER), EXPEDITED	EACH	1	1	0	0			
	X2011350	TREE PRUNING (OVER 10 INCH DIAMETER), EXPEDITED	EACH	1	1	0	0			
	X2100002	PRUNING FOR SAFETY AND EQUIPMENT CLEARANCE	UNIT	60	60	0	0			

	USER NAME    =    jacek.ejmont		DESIGNED   -	REVISED   -	STATE OF ILLINOIS DEPARTMENT OF TRANSPORTATION	SUMMARY OF QUANTITIES			F.A. RTE.	SECTION	COUNTY	TOTAL SHEETS	SHEET NO.
			DRAWN       -	REVISED   -					VAR	2025-1065-TR	VAR	24	3
	PLOT SCALE    =    \$SCALE\$		CHECKED   -	REVISED   -					CONTRACT NO. 62Y10				
	PLOT DATE       =    3/25/2025		DATE           -	REVISED   -		SCALE:	SHEET	OF   24   SHEETS	STA.	TO STA.	ILLINOIS   FED. AID PROJECT		

MODEL: Schedule03 (Sheet)  
FILE NAME: c:\pwworking\illinois.gov\_jacek.ejmont\11625-sht-schedule.dgn

DESCRIPTION	UNIT OF MEASUREMENT	LOCATIONS																
		SOUTH COOK			NORTH COOK						LAKE					MCHENRY		
		US 45: IL 83 TO 119TH ST (PALOS PARK)	I-55: COUNTY LINE RD TO I-294 (BURR RIDGE)	I-55: COUNTY LINE RD TO I-294 (BURR RIDGE)	US 14: HICKS RD TO N FRANKLIN AVE. (PALATINE)	IL 68 B/W BARRINGTON RD & US 14 (BARRINGTON, INVERNESS)	LAWLER AVE (WILMETTE)	IL 50 (CICERO AVE) AND LABAGH WOODS (CHICAGO)	IL 59 AND US 20 (BARTLETT)	ROOSEVELT RD & I-88/I- 294 RAMPS (ELMHURST)	US 41: HALF DAY RD TO KENNEDY RD (LAKE FOREST, HIGHLAND PARK	IL 176: LAKE ST TO I-94 (MUNDELEIN, LIBERTYVILLE)	IL 137: 33RD ST TO RUSSELL RD (ZION)	IL 173: GREEN BAY RD TO IL 173 (ZION)	SKOKIE HWY AND KENNEDY RD (LAKE FOREST)	US 14 AT LAKE SHORE DRIVE (WOODSTOCK)		
TREE REMOVAL (6 TO 15 UNITS DIAMETER)	UNIT				8.2	56.6	251.4			56.45	23.2			33.5				
TREE REMOVAL (6 TO 15 UNITS DIAMETER), EXPEDITED	UNIT																	
TREE REMOVAL (OVER 15 UNITS DIAMETER)	UNIT				54.5	54.7	74.9							63				
TREE REMOVAL (OVER 15 UNITS DIAMETER), EXPEDITED	UNIT																	
TREE REMOVAL (UNDER 6 UNITS DIAMETER)	UNIT						98.8							5.1				
TREE REMOVAL (SPECIAL)	UNIT																	
TREE REMOVAL, ACRES (SPECIAL)	ACRE	5.28	2.36	3.16		0.51					0.25				0.401			
SELECTIVE CLEARING	ACRE																	
SELECTIVE CLEARING	UNIT					15.1	4.08	28	12.5	20	19	19			12	12		
TREE LIMB REMOVAL (4 TO 10 INCHES DIAMETER)	EACH					8	5				2			1				
TREE LIMB REMOVAL (4 TO 10 INCHES DIAMETER), EXPEDITED	EACH																	
TREE LIMB REMOVAL (OVER 10 INCHES DIAMETER)	EACH						2											
TREE LIMB REMOVAL (OVER 10 INCHES DIAMETER), EXPEDITED	EACH																	
STUMP REMOVAL ONLY	UNIT																	
TREE PRUNING (1 TO 10 INCH DIAMETER)	EACH						1						2					
TREE PRUNING (OVER 10 INCH DIAMETER)	EACH					3	1						67					
TREE PRUNING (1 TO 10 INCH DIAMETER), EXPEDITED	EACH																	
TREE PRUNING (OVER 10 INCH DIAMETER), EXPEDITED	EACH																	
TREE PRUNING (SPECIAL)	UNIT																	
PRUNING FOR SAFETY AND EQUIPMENT CLEARANCE	UNIT				19.51	9.41	5.48				0.6	11	6.3	2.43				
NOTE: THE SPECIFIED QUANTITIES FOR EACH LOCATION ARE ESTIMATED. PAYMENT WILL BE MADE ONLY FOR ACTUAL QUANTITIES MEASURED AND ACCEPTED AS SATISFACTORY BY THE ENGINEER.																		
		USER NAME = jacek.ejmont	DESIGNED -	REVISED -	STATE OF ILLINOIS DEPARTMENT OF TRANSPORTATION					LOCATION AND WORK SCHEDULE				F.A. RTE.	SECTION	COUNTY	TOTAL SHEETS	SHEET NO.
			DRAWN -	REVISED -										VAR	2025-1065-TR	VAR	24	4
		PLOT SCALE = \$9CALC\$	CHECKED -	REVISED -										CONTRACT NO. 62Y10				
		PLOT DATE = 3/25/2025	DATE -	REVISED -						SCALE:	SHEET	OF 24	SHEETS	STA.	TO STA.	ILLINOIS   FED. AID PROJECT		



**15 Sites for location based work**

- US 45: IL 83 TO 119TH ST (PALOS PARK)
- I-55 WB: COUNTY LINE RD TO I-294 (BURR RIDGE)
- I-55 EB: COUNTY LINE RD TO I-294 (BURR RIDGE)
- US 14: HICKS RD TO N FRANKLIN AVE. (PALATINE)
- IL 68 B/W BARRINGTON RD & US 14 (BARRINGTON, INVERNESS)
- LAWLER AVE (WILMETTE)
- IL 50 (CICERO AVE) AND LABAGH WOODS (CHICAGO)
- IL 59 AND US 20 (BARTLETT)
- ROOSEVELT RD & I-88/I-294 RAMPS (ELMHURST)
- US 41: HALF DAY RD TO KENNEDY RD (LAKE FOREST, HIGHLAND PARK)
- IL 176: LAKE ST TO I-94 (MUNDELEIN, LIBERTYVILLE)
- IL 137: 33RD ST TO RUSSELL RD (ZION)
- IL 173: GREEN BAY RD TO IL 173 (ZION)
- SKOKIE HWY AND KENNEDY RD (LAKE FOREST)
- US 14 AT LAKE SHORE DRIVE (WOODSTOCK)

MODEL: Location Overview [Sheet]  
FILE NAME: c:\p\work\62y10\illinois.gov\62y10\62y10-111625-sht-details.dgn

USER NAME	= jacek.ejmont	DESIGNED	-	REVISED	-
		DRAWN	-	REVISED	-
		CHECKED	-	REVISED	-
PLOT DATE	= 3/25/2025	DATE	-	REVISED	-

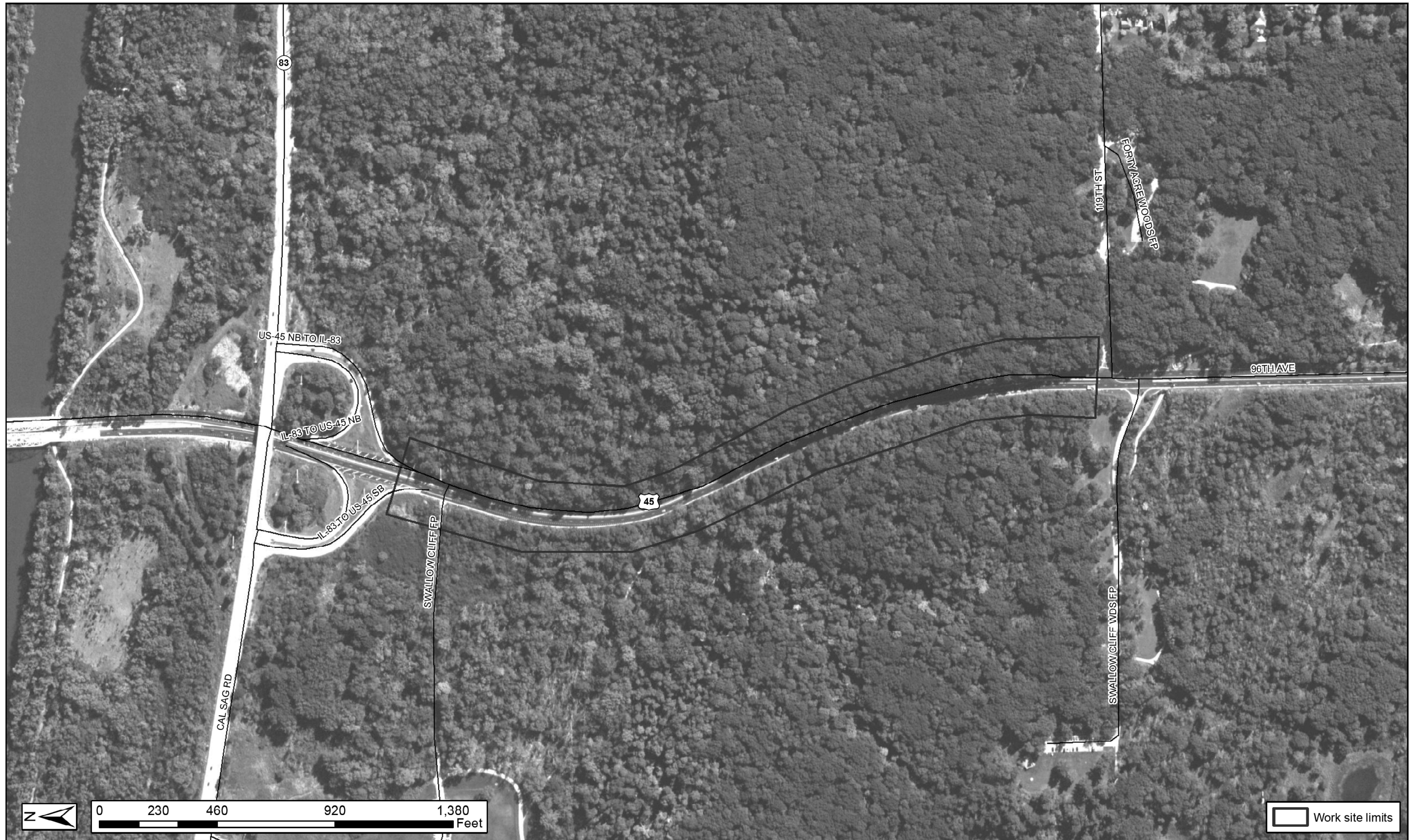
**STATE OF ILLINOIS  
DEPARTMENT OF TRANSPORTATION**

**62Y10 LOCATION BASED WORK OVERVIEW**

SCALE: SHEET 5 OF 24 SHEETS STA. TO STA.

F.A. RTE	SECTION	COUNTY	TOTAL SHEETS	SHEET NO.
VAR	2025-1065-TR	VAR	24	5
CONTRACT NO. 62Y10				
ILLINOIS FED. AID PROJECT				

MODEL: Location1 [Sheet]  
FILE NAME: c:\pwworking\illinois.gov\_jack.ejmont\illinois.gov\1090990D111525-shd-details.dgn



PLOT DATE = 3/25/2025	USER NAME = jack.ejmont	DESIGNED -	REVISED -
		DRAWN -	REVISED -
		CHECKED -	REVISED -
	DATE -		REVISED -

STATE OF ILLINOIS  
DEPARTMENT OF TRANSPORTATION

LOCATION MAP: US 45: IL 83 TO 119TH ST.  
(PALOS PARK)

SCALE: SHEET 6 OF 24 SHEETS STA. TO STA.

F.A. RTE.	SECTION	COUNTY	TOTAL SHEETS	SHEET NO.
VAR	2025-1065-TR	VAR	24	6
CONTRACT NO. 62Y10				
ILLINOIS FED. AID PROJECT				



MODEL: Location2 [Sheet]  
FILE NAME: c:\pwworking\illinois.gov\1090990D\11625-shd-details.dgn



USER NAME	= jacek.ejmont	DESIGNED	-	REVISED	-
		DRAWN	-	REVISED	-
		CHECKED	-	REVISED	-
PLOT DATE	= 3/25/2025	DATE	-	REVISED	-

STATE OF ILLINOIS  
DEPARTMENT OF TRANSPORTATION

LOCATION MAP: I-55: COUNTY LINE RD. TO I-294  
(BURR RIDGE)

SCALE: SHEET 7 OF 24 SHEETS STA. TO STA.

F.A. RTE.	SECTION	COUNTY	TOTAL SHEETS	SHEET NO.
VAR	2025-1065-TR	VAR	24	7
CONTRACT NO. 62Y10				
ILLINOIS FED. AID PROJECT				



MODEL: Location3 [Sheet]  
FILE NAME: c:\pw\work\pawd\illinois.gov\_jack.ejmont\illinois.gov\1090990D111625-sht-details.dgn



USER NAME = jacek.ejmont	DESIGNED -	REVISED -
	DRAWN -	REVISED -
	CHECKED -	REVISED -
PLOT DATE = 3/25/2025	DATE -	REVISED -

STATE OF ILLINOIS  
DEPARTMENT OF TRANSPORTATION

LOCATION MAP: US 14: HICKS RD TO N. FRANKLIN AVE.  
(PALATINE)

SCALE: SHEET 8 OF 24 SHEETS STA. TO STA.

FA RTE	SECTION	COUNTY	TOTAL SHEETS	SHEET NO.
VAR	2025-1065-TR	VAR	24	8
CONTRACT NO. 62Y10				
ILLINOIS FED. AID PROJECT				



MODEL: Location4 [Sheet]  
FILE NAME: c:\pw\work\pwwd\illinois.gov\1090890D\11625-sht-details.dgn



USER NAME	= jacek.ejmont	DESIGNED	-	REVISED	-
		DRAWN	-	REVISED	-
		CHECKED	-	REVISED	-
PLOT DATE	= 3/25/2025	DATE	-	REVISED	-

STATE OF ILLINOIS  
DEPARTMENT OF TRANSPORTATION

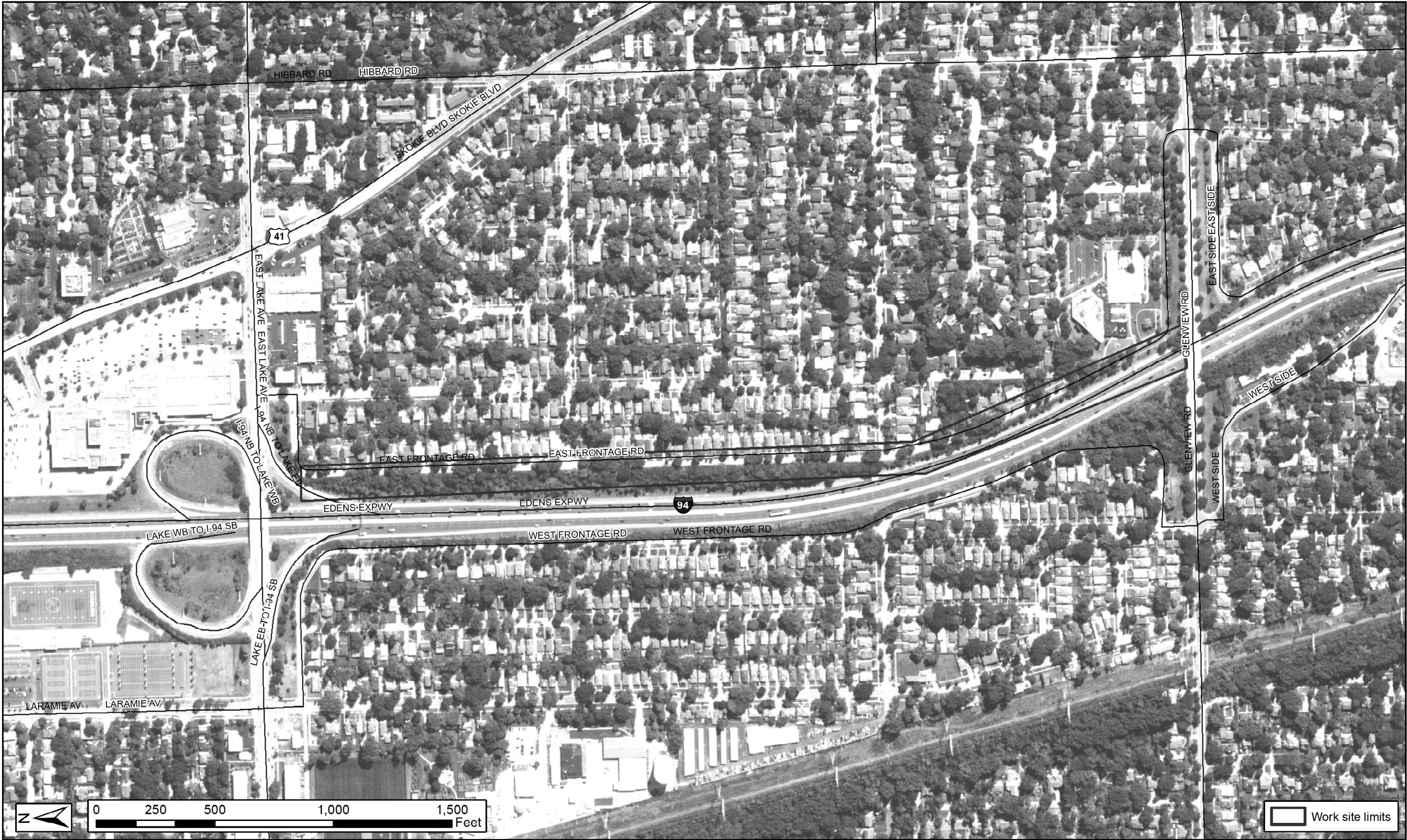
LOCATION MAP: IL 68 BETWEEN BARRINGTON RD. & US 14  
(BARRINGTON, INVERNESS)

SCALE: SHEET 9 OF 24 SHEETS STA. TO STA.

F.A. RTE.	SECTION	COUNTY	TOTAL SHEETS	SHEET NO.
VAR	2025-1065-TR	VAR	24	9
CONTRACT NO. 62Y10				
ILLINOIS FED. AID PROJECT				



MODEL: Locations5 [Sheet]  
FILE NAME: c:\pw\work\pwwd\illinois.gov\1090990D\11625-shd-details.dgn



USER NAME	= jacek.ejmont	DESIGNED	-	REVISED	-
		DRAWN	-	REVISED	-
		CHECKED	-	REVISED	-
PLOT DATE	= 3/25/2025	DATE	-	REVISED	-

STATE OF ILLINOIS  
DEPARTMENT OF TRANSPORTATION

LOCATION MAP: LAWLER AVENUE  
(WILMETTE)

SCALE: SHEET 10 OF 24 SHEETS STA. TO STA.

FA RTE	SECTION	COUNTY	TOTAL SHEETS	SHEET NO.
VAR	2025-1065-TR	VAR	24	10
CONTRACT NO. 62Y10				
ILLINOIS FED. AID PROJECT				



MODEL: Locations (Sheet)  
FILE NAME: c:\pw\work\pwt\illinois.gov\1090990D\11625-sht-details.dgn



USER NAME	= jacek.ejmont	DESIGNED	-	REVISED	-
		DRAWN	-	REVISED	-
		CHECKED	-	REVISED	-
PLOT DATE	= 3/25/2025	DATE	-	REVISED	-

STATE OF ILLINOIS  
DEPARTMENT OF TRANSPORTATION

LOCATION MAP: IL 50 (CICERO AVE.) AND LABAGH WOODS  
(CHICAGO)

SCALE: SHEET 11 OF 24 SHEETS STA. TO STA.

F.A. RTE.	SECTION	COUNTY	TOTAL SHEETS	SHEET NO.
VAR	2025-1065-TR	VAR	24	11
CONTRACT NO. 62Y10				
ILLINOIS FED. AID PROJECT				



MODEL: Location7 [Sheet]  
FILE NAME: c:\pwworking\illinois.gov\jacek.ejmont\1090990D111525-shd-details.dgn



USER NAME	= jacek.ejmont	DESIGNED	-	REVISED	-
		DRAWN	-	REVISED	-
		CHECKED	-	REVISED	-
PLOT DATE	= 3/25/2025	DATE	-	REVISED	-

STATE OF ILLINOIS  
DEPARTMENT OF TRANSPORTATION

LOCATION MAP: IL 59 AND US 20  
(BARTLETT)

SCALE: SHEET 12 OF 24 SHEETS STA. TO STA.

F.A. RTE.	SECTION	COUNTY	TOTAL SHEETS	SHEET NO.
VAR	2025-1065-TR	VAR	24	12
CONTRACT NO. 62Y10				
ILLINOIS FED. AID PROJECT				





MODEL: Locations8 [Sheet]  
FILE NAME: c:\p\work\p\work\illinois.gov\jacek.ejmont\11030990D\11030990D-sht-details.dgn

USER NAME	= jacek.ejmont	DESIGNED	-	REVISED	-
		DRAWN	-	REVISED	-
		CHECKED	-	REVISED	-
PLOT DATE	= 3/25/2025	DATE	-	REVISED	-

STATE OF ILLINOIS  
DEPARTMENT OF TRANSPORTATION

LOCATION MAP: ROOSEVELT RD. AND I-88/I-294 RAMPS  
(ELMHURST)

SCALE: SHEET 13 OF 24 SHEETS STA. TO STA.

FA RTE	SECTION	COUNTY	TOTAL SHEETS	SHEET NO.
VAR	2025-1065-TR	VAR	24	13
CONTRACT NO. 62Y10				
ILLINOIS FED. AID PROJECT				



MODEL: Location9 [Sheet]  
FILE NAME: c:\p\work\p\work\illinois.gov\1090990D\111625-sht-details.dgn



USER NAME	= jacek.ejmont	DESIGNED	-	REVISED	-
		DRAWN	-	REVISED	-
		CHECKED	-	REVISED	-
PLOT DATE	= 3/25/2025	DATE	-	REVISED	-

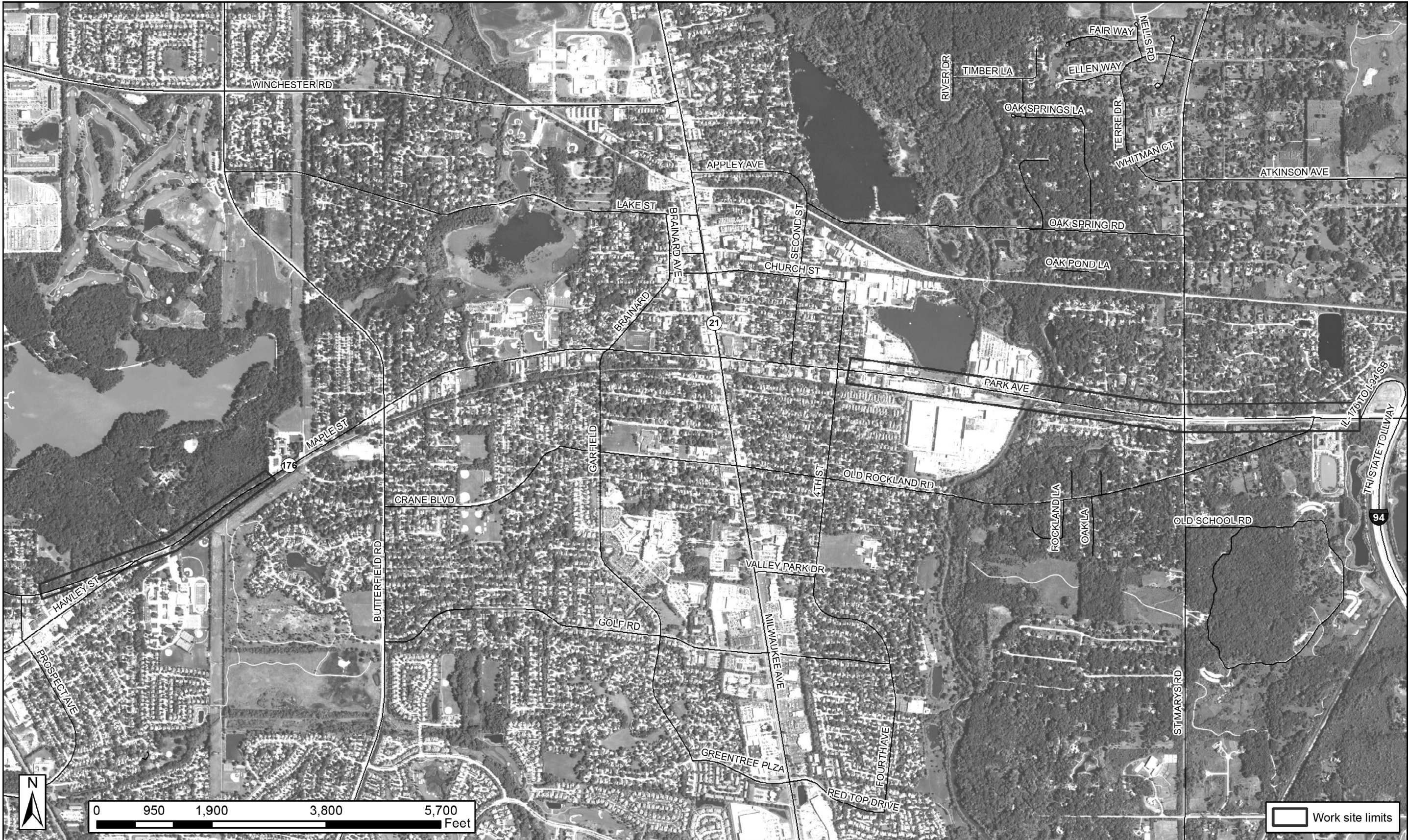
STATE OF ILLINOIS  
DEPARTMENT OF TRANSPORTATION

LOCATION MAP: US 41: HALF DAY RD. TO KENNEDY RD.  
(LAKE FOREST, HIGHLAND PARK)

SCALE: SHEET 14 OF 24 SHEETS STA. TO STA.

F.A. RTE.	SECTION	COUNTY	TOTAL SHEETS	SHEET NO.
VAR	2025-1065-TR	VAR	24	14
CONTRACT NO. 62Y10				
ILLINOIS FED. AID PROJECT				





MODEL: Location10 (Sheet)  
FILE NAME: c:\p\work\p\work\illinois.gov\_jack.ejmont\illinois.gov\1090990D111525-shd-details.dgn

USER NAME = jack.ejmont	DESIGNED -	REVISED -
	DRAWN -	REVISED -
	CHECKED -	REVISED -
PLOT DATE = 3/25/2025	DATE -	REVISED -

STATE OF ILLINOIS  
DEPARTMENT OF TRANSPORTATION

LOCATION MAP: IL 176: IL 21 to I-94 (MUNDELEIN, LIBERTYVILLE)			
SCALE:	SHEET 15	OF 24 SHEETS	STA. TO STA.

FA RTE	SECTION	COUNTY	TOTAL SHEETS	SHEET NO.
VAR	2025-1065-TR	VAR	24	15
CONTRACT NO. 62Y10				
ILLINOIS   FED. AID PROJECT				





MODEL: Location11 [Sheet]  
FILE NAME: c:\pwworking\illinois.gov\jacek.ejmont\11090990D111625-shd-details.dgn

USER NAME	= jacek.ejmont	DESIGNED	-	REVISED	-
		DRAWN	-	REVISED	-
		CHECKED	-	REVISED	-
PLOT DATE	= 3/25/2025	DATE	-	REVISED	-

STATE OF ILLINOIS  
DEPARTMENT OF TRANSPORTATION

LOCATION MAP: IL 137: 33RD STREET TO RUSSELL ROAD  
(ZION)

SCALE: SHEET 16 OF 24 SHEETS STA. TO STA.

F.A. RTE.	SECTION	COUNTY	TOTAL SHEETS	SHEET NO.
VAR	2025-1065-TR	VAR	24	16
CONTRACT NO. 62Y10				
ILLINOIS FED. AID PROJECT				



MODEL: Location12 (Sheet)  
FILE NAME: c:\pw\work\pwt\illinois.gov\jacek.ejmont\111625-sht-details.dgn



USER NAME	= jacek.ejmont	DESIGNED	-	REVISED	-
		DRAWN	-	REVISED	-
		CHECKED	-	REVISED	-
PLOT DATE	= 3/25/2025	DATE	-	REVISED	-

STATE OF ILLINOIS  
DEPARTMENT OF TRANSPORTATION

LOCATION MAP: IL 173: GREEN BAY RD. TO IL 173 (ZION)			
SCALE:	SHEET 17	OF 24	SHEETS
	STA.		TO STA.

F.A. RTE.	SECTION	COUNTY	TOTAL SHEETS	SHEET NO.
VAR	2025-1065-TR	VAR	24	17
CONTRACT NO. 62Y10				
ILLINOIS   FED. AID PROJECT				





MODEL: Location13 (Sheet)  
FILE NAME: c:\p\work\p\work\illinois.gov\1090890D111625-shd-details.dgn

USER NAME	= jacek.ejmont	DESIGNED	-	REVISED	-
		DRAWN	-	REVISED	-
		CHECKED	-	REVISED	-
PLOT DATE	= 3/25/2025	DATE	-	REVISED	-

STATE OF ILLINOIS  
DEPARTMENT OF TRANSPORTATION

LOCATION MAP: SKOKIE HIGHWAY AND KENNEDY ROAD  
(LAKE FOREST)

SCALE: SHEET 18 OF 24 SHEETS STA. TO STA.

F.A. RTE.	SECTION	COUNTY	TOTAL SHEETS	SHEET NO.
VAR	2025-1065-TR	VAR	24	18
CONTRACT NO. 62Y10				
ILLINOIS FED. AID PROJECT				



MODEL: Location14 (Sheet)  
FILE NAME: c:\pw\_workspace\illinois.gov\1090890D111625-shd-details.dgn



USER NAME	= jacek.ejmont	DESIGNED	-	REVISED	-
		DRAWN	-	REVISED	-
		CHECKED	-	REVISED	-
PLOT DATE	= 3/25/2025	DATE	-	REVISED	-

STATE OF ILLINOIS  
DEPARTMENT OF TRANSPORTATION

LOCATION MAP: US 14 AT LAKE SHORE DRIVE  
(WOODSTOCK)

SCALE: SHEET 19 OF 24 SHEETS STA. TO STA.

F.A. RTE.	SECTION	COUNTY	TOTAL SHEETS	SHEET NO.
VAR	2025-1065-TR	VAR	24	19
CONTRACT NO. 62Y10				
ILLINOIS FED. AID PROJECT				



**Illinois Department  
of Transportation**

**CONTRACT**  
**62Y10**

WORK  
ORDER  
NUMBER:

PAGE: \_\_\_\_\_ of \_\_\_\_\_

Team Section

Field Work By:	
Prepared By:	

Standard - 30 Day	
Completion Date	

Cook		DuPage		Kane	
Lake		McHenry		Will	

Marked Route: \_\_\_\_\_ Municipality: \_\_\_\_\_ Side of Road: \_\_\_\_\_

Location: \_\_\_\_\_

TREE REMOVAL BY AREA	LOCATION	MEASUREMENTS			PRUNING FOR SAFETY & EQUIP. CLEAR. UNIT - (100 LF)	SELECTIVE CLEARING (X2010510) UNIT - (1000 SF)	SELECTIVE CLEARING (X2010514) ACRE	TREE REMOVAL SPECIAL (X2010310) UNIT - (1000 SF)	TREE REMOVAL, ACRES (SPECIAL) (X2010350) ACRE
		WIDTH	LENGTH	TOTAL AREA					
SHEET TOTAL									
GRAND TOTAL									

Special Instructions: \_\_\_\_\_

Reason for Removal:

<b>AUTHORIZATION OF WORK</b>	
IDOT Resident Engineer/Technician Signature	
Date Work Order Issued	Contractor Signature
<b>OFFICE USE ONLY</b>	
INITIAL(S)	DATE
Measured in place by:	_____
Calculated by:	_____
Checked by:	_____

<p align="center"><b>CERTIFICATION OF COMPLETED WORK</b></p>	
<p align="center">Contractor Signature</p>	
<p align="center">Date Work Order Completed</p>	
<p align="center"><b>INSPECTION AND ACCEPTANCE OF COMPLETED WORK</b></p>	
<p align="center">Inspector Signature</p>	
<p align="center">Date Work Ordered Inspected and Accepted</p>	
<p align="center"><b>This is to certify that the work has been completed.</b></p>	



**Illinois Department  
of Transportation**

**CONTRACT  
62Y10**

WORK  
ORDER  
NUMBER:

PAGE: \_\_\_\_\_ of \_\_\_\_\_

Team Section

Field Work By:	
Prepared By:	

Standard - 30 Day	
Completion Date	

Cook		DuPage		Kane	
Lake		McHenry		Will	

Expedited - 48 hour	
---------------------	--

Marked Route: \_\_\_\_\_ Municipality: \_\_\_\_\_ Side of Road: \_\_\_\_\_

Location: \_\_\_\_\_

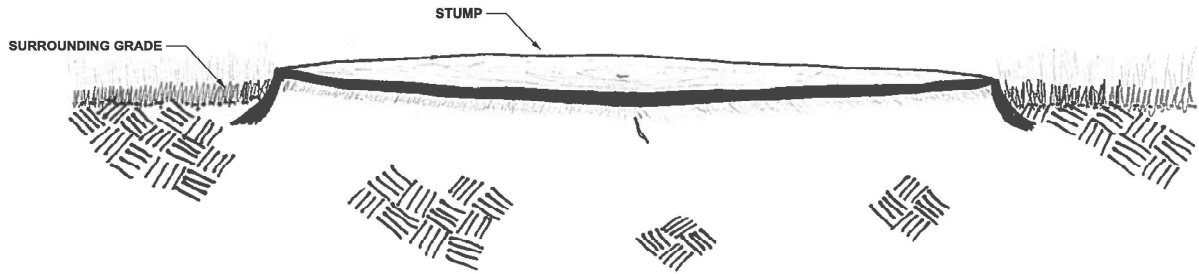
TREE REMOVAL BY UNIT	TREE #	LIMB REMOVAL		TREE REMOVAL				TREE PRUNING		
		4" - 10" (X2010100) EACH	>10" (X2010200) EACH	Under 6" Diameter (X2010106) UNIT (DIA)	6"-15" (20100110) UNIT (DIA)	> 15" (20100210) UNIT (DIA)	STUMP REMOVAL ONLY (X2010400) UNIT (DIA)	1" - 10" (20101300) UNIT (DIA)	> 10" (20101350) UNIT (DIA)	SPECIAL (X2010305) UNIT (DIA)
SHEET TOTAL										
GRAND TOTAL										

**Special Instructions:** \_\_\_\_\_

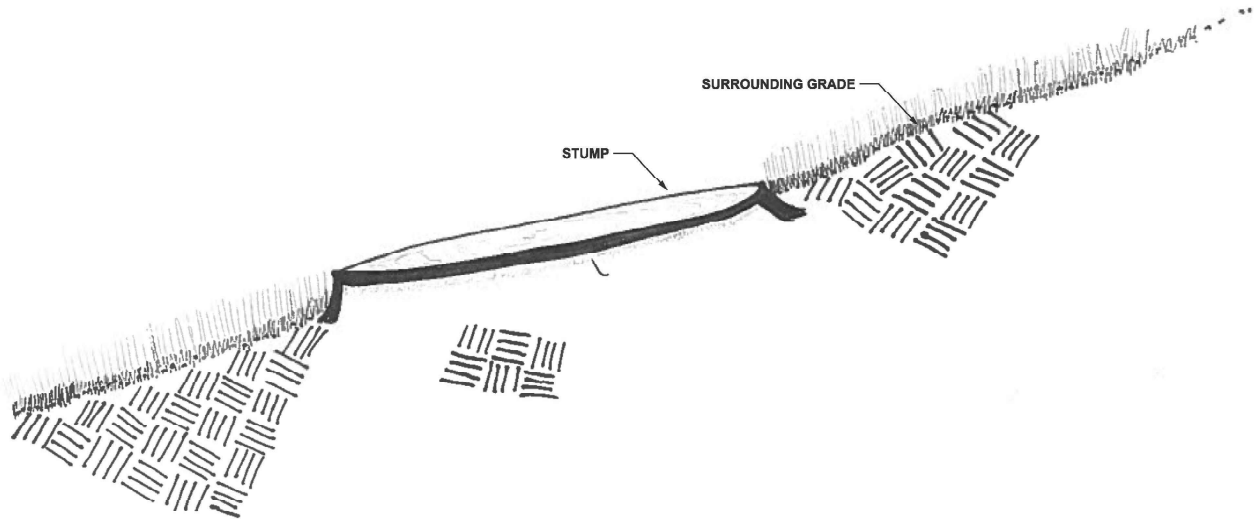
Reason for Removal: \_\_\_\_\_

AUTHORIZATION OF WORK	
IDOT Resident Engineer/Technician Signature	
Date Work Order Issued	Contractor Signature
OFFICE USE ONLY	
INITIAL(S)	DATE
Measured in place by:	_____
Calculated by:	_____
Checked by:	_____

<b>CERTIFICATION OF COMPLETED WORK</b>
<div style="border-bottom: 1px solid black; height: 1.2em; margin-bottom: 5px;"></div> <div style="border-bottom: 1px solid black; height: 1.2em; margin-bottom: 5px;"></div>
Contractor Signature
<div style="border-bottom: 1px solid black; height: 1.2em; margin-bottom: 5px;"></div> <div style="border-bottom: 1px solid black; height: 1.2em; margin-bottom: 5px;"></div>
Date Work Order Completed
<b>INSPECTION AND ACCEPTANCE OF COMPLETED WORK</b>
<div style="border-bottom: 1px solid black; height: 1.2em; margin-bottom: 5px;"></div> <div style="border-bottom: 1px solid black; height: 1.2em; margin-bottom: 5px;"></div>
Inspector Signature
<div style="border-bottom: 1px solid black; height: 1.2em; margin-bottom: 5px;"></div> <div style="border-bottom: 1px solid black; height: 1.2em; margin-bottom: 5px;"></div>
Date Work Ordered Inspected and Accepted
<b>This is to certify that the work has been completed.</b>



**STUMP CUT FLUSH AT A HORIZONTAL PLANE**  
NOTE: STUMPS SHALL BE CUT LESS THAN 2" OF THE SURROUNDING GRADE

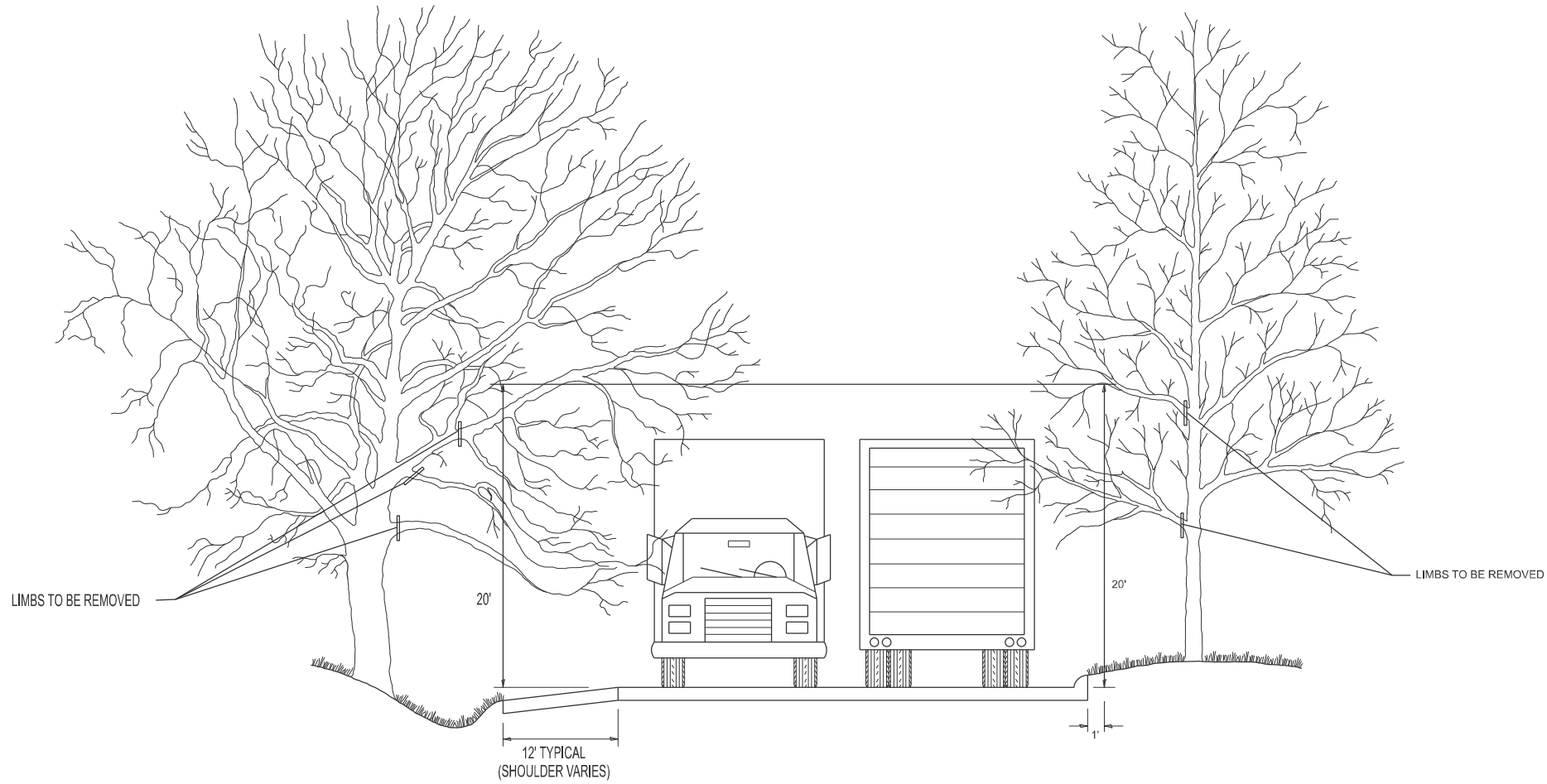


**STUMP CUT FLUSH ON A SLOPE**  
NOTE: STUMPS SHALL BE CUT LESS THAN 2" OF THE SURROUNDING GRADE

MODEL: Stump Detail [Sheet]  
FILE NAME: c:\p\work\p\work\illinois.gov\_jack.ejmont@illinois.gov\_jack.ejmont\11625-shrlandscp.dgn

	USER NAME = jack.ejmont	DESIGNED -	REVISED -	STATE OF ILLINOIS DEPARTMENT OF TRANSPORTATION	DEAD TREE REMOVAL STUMP DETAILS			F.A. RTE.	SECTION	COUNTY	TOTAL SHEETS	SHEET NO.
		DRAWN -	REVISED -					VAR	2025-1065-TR	VAR	24	21
	PLOT SCALE = \$SCALE\$	CHECKED -	REVISED -					CONTRACT NO. 62Y10				
	PLOT DATE = 3/25/2025	DATE -	REVISED -		SCALE:	SHEET	OF 24 SHEETS	STA.	TO STA.	ILLINOIS   FED. AID PROJECT		

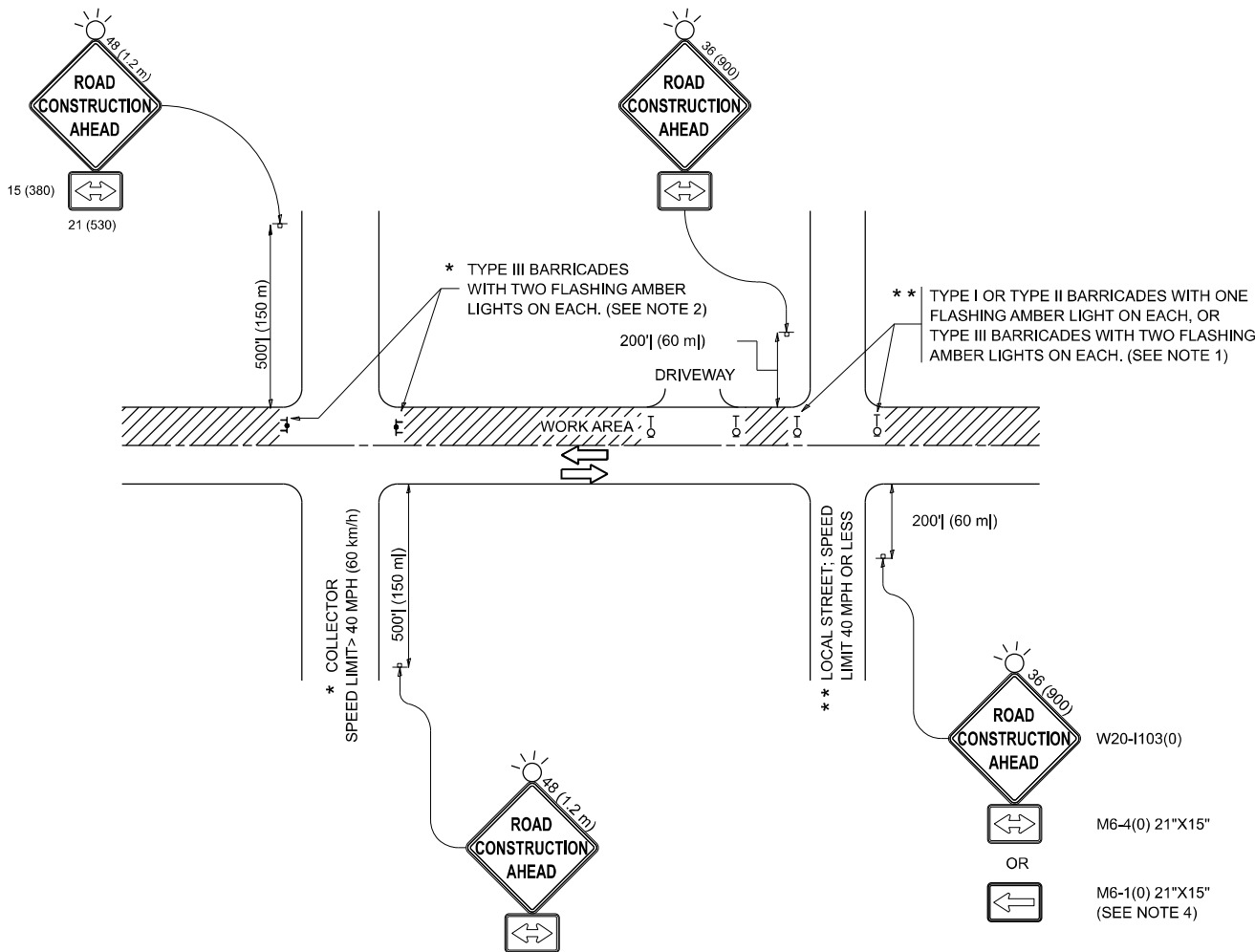
MODEL: BM-20 [Sheet]  
FILE NAME: c:\pw\_work\pwrtd\illinois.gov\_jacek.ejmont@illinois.gov\d1090884\111525-shr-DieSids.dgn



	USER NAME = jacek.ejmont	DESIGNED -	REVISED - R. BORO 10-31-06	STATE OF ILLINOIS DEPARTMENT OF TRANSPORTATION	PRUNING FOR SAFETY AND EQUIPMENT CLEARANCE			F.A. RTE.	SECTION	COUNTY	TOTAL SHEETS	SHEET NO.
		DRAWN -	REVISED -					VAR	2025-1065-TR	VAR	24	22
		CHECKED -	REVISED -		BM-20			CONTRACT NO. 62Y10				
	PLOT DATE = 3/25/2025	DATE -	REVISED -		SCALE: NONE	SHEET 1	OF 1 SHEETS	STA.	TO STA.	ILLINOIS FED. AID PROJECT		



MODEL: tc-10 [Sheet]  
FILE NAME: c:\p\work\pwt\illinois.gov\jacek.ejmont@illinois.gov\d1090884\D111525-sh1-Dls\Std.dgn



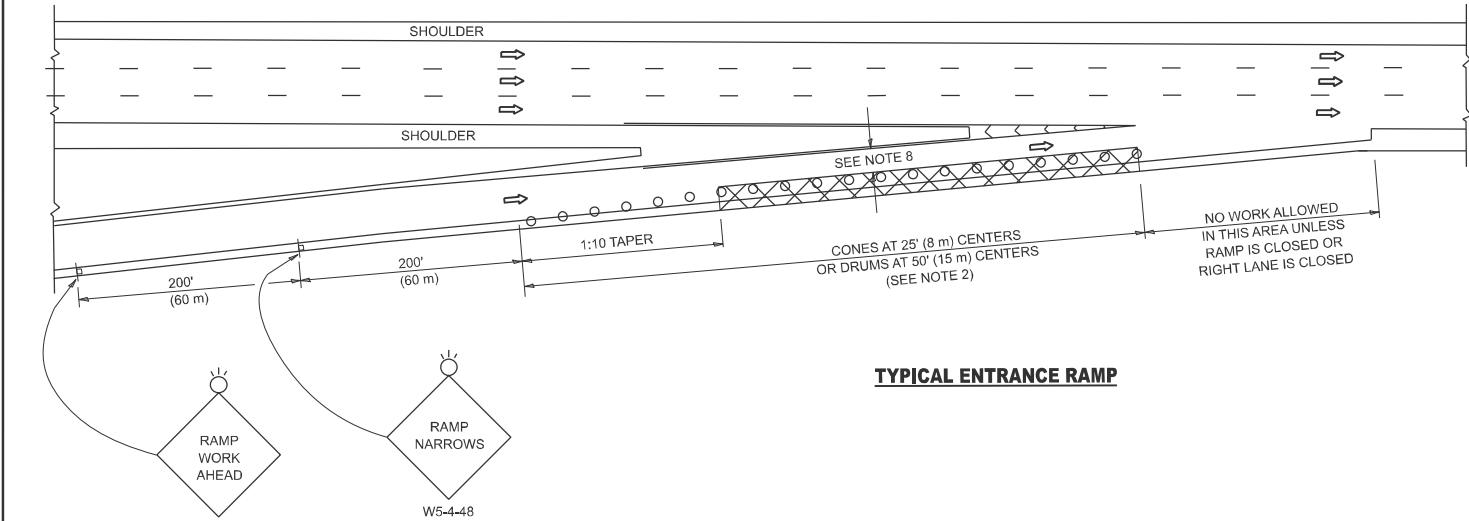
NOTES:

- SIDE ROAD WITH A SPEED LIMIT OF 40 MPH (60 km/h) OR LESS AS SHOWN ON THE DRAWING AND AS DIRECTED BY THE ENGINEER:
  - ONE "ROAD CONSTRUCTION AHEAD" SIGN 36 x 36 (900x900) WITH A FLASHER MOUNTED ON IT APPROXIMATELY 200' (60 m) IN ADVANCE OF THE MAIN ROUTE.
  - THE CLOSED PORTION OF THE MAIN ROUTE SHALL BE PROTECTED BY BLOCKING WITH TYPE I, TYPE II OR TYPE III BARRICADES, 1/3 OF THE CROSS SECTION OF THE CLOSED PORTION.
- SIDE ROAD WITH A SPEED LIMIT GREATER THAN 40 MPH (60 km/h) AS SHOWN ON THE DRAWING AND AS DIRECTED BY THE ENGINEER:
  - ONE "ROAD CONSTRUCTION AHEAD" SIGN 48 x 48 (1.2 m x 1.2 m) WITH A FLASHER MOUNTED ON IT APPROXIMATELY 500' (150 m) IN ADVANCE OF THE MAIN ROUTE.
  - THE CLOSED PORTION OF THE MAIN ROUTE SHALL BE PROTECTED BY BLOCKING WITH TYPE III BARRICADES, 1/2 OF THE CROSS SECTION OF THE CLOSED PORTION.
- CONES MAY BE SUBSTITUTED FOR BARRICADES OR DRUMS AT HALF THE SPACING DURING DAY OPERATIONS. CONES SHALL BE A MINIMUM OF 28 (710) IN HEIGHT.
- WHEN THE SIDE ROAD LIES BETWEEN THE BEGINNING OF THE MAINLINE SIGNING AND THE WORK ZONE, A SINGLE HEADED ARROW (M6-1) SHALL BE USED IN LIEU OF THE DOUBLE HEADED ARROW (M6-4).
- WHEN WORK IS BEING PERFORMED ON A SIDE ROAD OR DRIVEWAY, FOLLOW THE APPLICABLE STANDARD(S). THE DIRECTIONAL ARROW (M6-1 OR M6-4) SHALL BE COVERED OR REMOVED WHEN NO LONGER CONSISTENT WITH THE TRAFFIC CONTROL SET-UP.
- ADVANCE WARNING SIGNS ARE TO BE OMITTED ON DRIVEWAYS UNLESS OTHERWISE SPECIFIED IN THE PLANS OR BY THE ENGINEER.
- THE TRAFFIC CONTROL AND PROTECTION FOR SIDE ROADS, INTERSECTIONS, AND DRIVEWAYS SHALL BE INCLUDED IN THE COST OF SPECIFIED TRAFFIC CONTROL STANDARDS OR ITEMS.

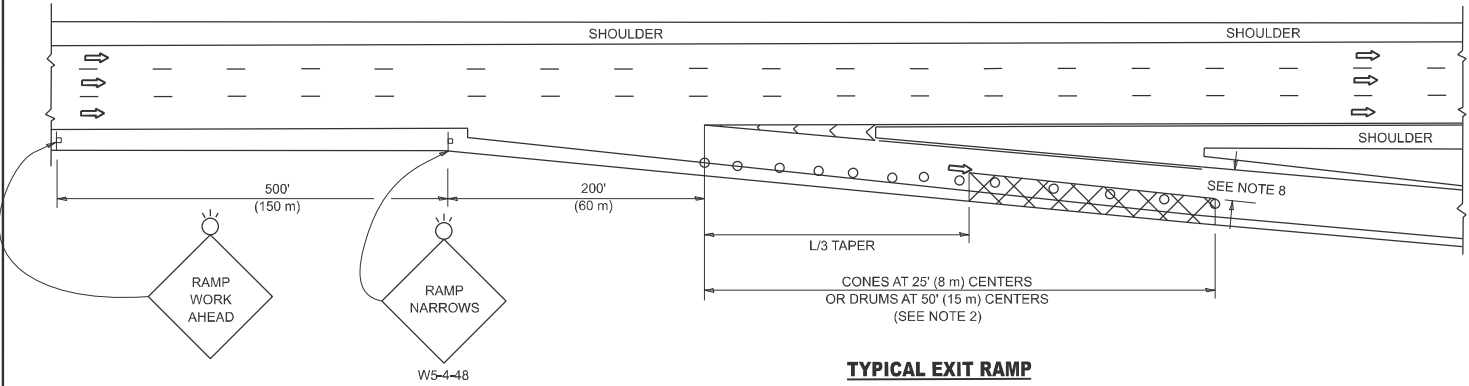
All dimensions are in inches (millimeters) unless otherwise shown.

	USER NAME = jacek.ejmont	DESIGNED - L.H.A.	REVISED - T. RAMMACHER 01-06-00	STATE OF ILLINOIS DEPARTMENT OF TRANSPORTATION	TRAFFIC CONTROL AND PROTECTION FOR SIDE ROADS, INTERSECTIONS, AND DRIVEWAYS				F.A. RTE.	SECTION	COUNTY	TOTAL SHEETS	SHEET NO.
		DRAWN -	REVISED - A. SCHUETZE 07-01-13						VAR	2025-1065-TR	VAR	24	23
		CHECKED -	REVISED - A. SCHUETZE 09-15-06		TC-10				CONTRACT NO. 62Y10				
	PLOT DATE = 3/25/2025	DATE - 06-89	REVISED - D. SENDERAK 05-03-24		SCALE:	SHEET	OF	SHEETS	STA.	TO STA.	ILLINOIS FED. AID PROJECT		

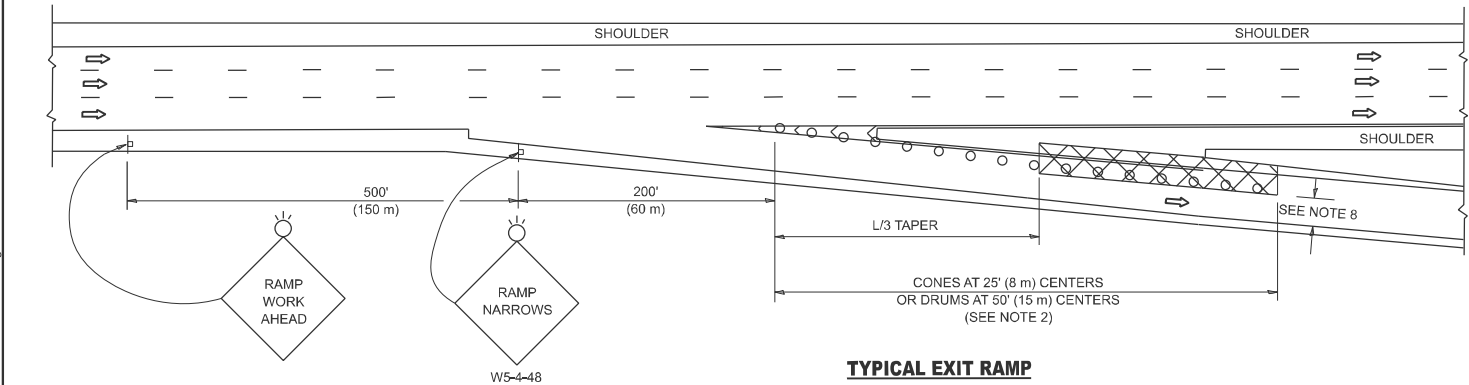
PARTIAL RAMP CLOSURE DETAILS



TYPICAL ENTRANCE RAMP



TYPICAL EXIT RAMP



TYPICAL EXIT RAMP

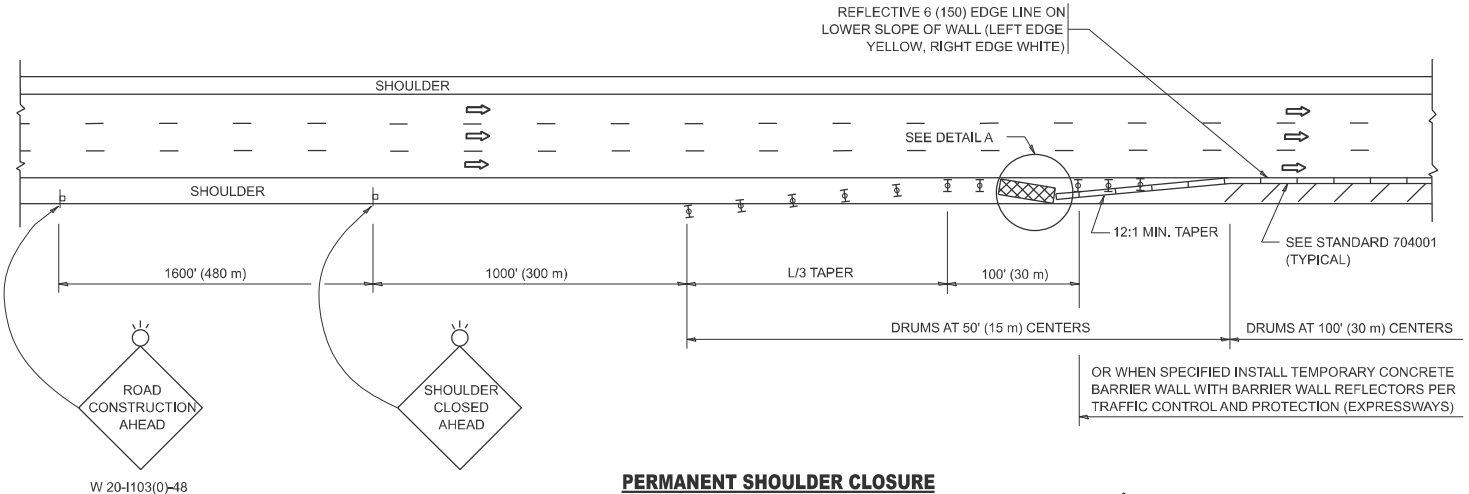
SYMBOLS

- ACTIVE WORK AREA
- SIGN ON PORTABLE OR PERMANENT SUPPORT
- FLAGGER WITH CONTROL SIGN
- TYPE II BARRICADE OR DRUM
- CONE, DRUM OR BARRICADE
- IMPACT ATTENUATOR OF TYPE AND TEST LEVEL SPECIFIED

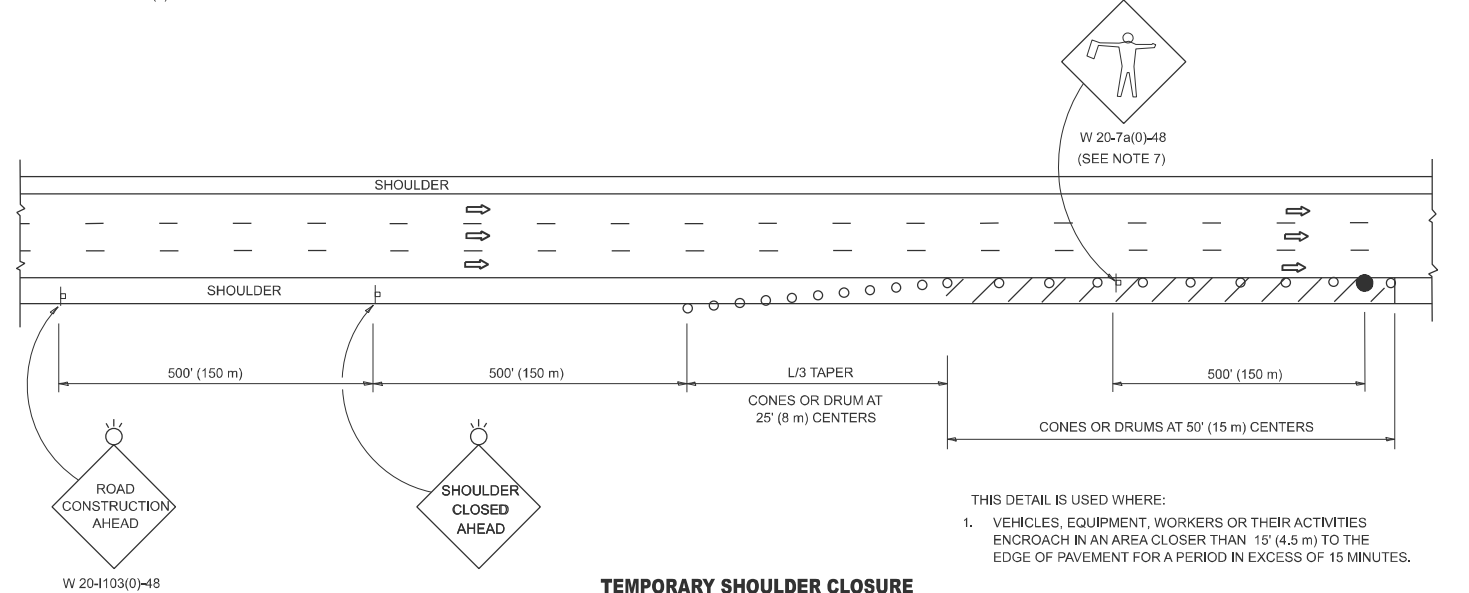
GENERAL NOTES:

- THE "L" DISTANCE EQUALS:  
SPEED LIMIT FORMULAS  
45 mph (80 km/h) METRIC ENGLISH  
OR GREATER: L=0.65(W)(S) L=(W)(S)  
W = WIDTH OF OFFSET IN FEET (METERS)  
S = NORMAL POSTED SPEED MPH (KM/H)
- TYPE II BARRICADES OR DRUMS ARE REQUIRED FOR ALL NIGHTTIME CLOSURES. TYPE II BARRICADES OR DRUMS WITH MONODIRECTIONAL STEADY BURN LIGHTS ARE REQUIRED FOR DELINEATING OBSTACLES, EXCAVATIONS, OR HAZARDS EXCEEDING 100 FT (30m) IN LENGTH AT NIGHT.
- ALL SIGNS SHALL BE POST MOUNTED IF THE CLOSURE TIME EXCEEDS FOUR DAYS.
- FLASHING LIGHTS SHALL BE USED DURING THE HOURS OF DARKNESS AND SHALL BE INSTALLED ABOVE THE FIRST TWO SETS OF SIGNS.

SHOULDER CLOSURE DETAILS

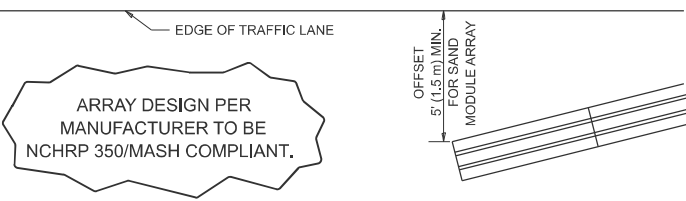


PERMANENT SHOULDER CLOSURE



TEMPORARY SHOULDER CLOSURE

- THIS DETAIL IS USED WHERE:
- VEHICLES, EQUIPMENT, WORKERS OR THEIR ACTMTIES ENCROACH IN AN AREA CLOSER THAN 15' (4.5 m) TO THE EDGE OF PAVEMENT FOR A PERIOD IN EXCESS OF 15 MINUTES.



DETAIL "A"  
IMPACT ATTENUATOR, TEMPORARY  
(SEE NOTE 5)

- THE IMPACT ATTENUATOR, TEMPORARY IS NOT REQUIRED WHEN THE TEMPORARY CONCRETE BARRIER WALL IS PROTECTED BY OR IS TIED INTO THE EXISTING GUARDRAIL. IF OFFSET IS LESS THAN 5 FEET USE NARROW USE TYPE DEVICE TO MEET NCHRP350/MASH.
- AUTHORIZATION FROM THE DISTRICT'S BUREAU OF TRAFFIC IS REQUIRED FOR ALL FREEWAY CLOSURES.
- THE FLAGGER AND FLAGGER SIGN ARE REQUIRED AT THE ABOVE WORK SITES WHEN:  
a. FOUR OR MORE WORK VEHICLES ENTER THE TRAFFIC LANES IN A ONE HOUR PERIOD.  
b. THE WORK AVTIVITY REQUIRES FREQUENT ENCROACHMENT INTO THE LANE OPEN TO TRAFFIC.  
THE FLAGGER SHALL BE STATIONED APPROXIMATELY 100' (30 m) TO 200' (60 m) IN ADVANCE OF THE WORKERS.
- 12' MIN. WIDTH TANGENT SECTION  
16' MIN. WIDTH CURVE SECTION.
- TEMPORARY SHOULDER AND NON-SYSTEM INTERCHANGE PARTIAL RAMP CLOSURES ARE ALLOWED WEEKDAYS BETWEEN 9:00 A.M. AND 3:00 P.M. AND BETWEEN 7:00 P.M. AND 5:00 A.M. OR AS APPROVED BY THE EXPRESSWAY TRAFFIC OPERATIONS ENGINEER. PERMANENT SHOULDER AND PARTIAL RAMP CLOSURES WILL ONLY BE PERMITTED IF CALLED FOR IN THE PLANS OR AS APPROVED BY THE EXPRESSWAY OPERATIONS ENGINEER.

ALL DIMENSIONS ARE IN INCHES (MILLIMETERS) UNLESS OTHERWISE SHOWN.

MODEL: TC 17 [Sheet]  
FILE NAME: c:\p\work\illinois.gov\jacek.ejmont\illinois.gov\109084\111525-sh-DisStds.dgn

PLOT DATE	USER NAME	DESIGNED	REVISED
	= jacek.ejmont	-	- M.D. 06-13
		DRAWN	- M.D. 01-18
		CHECKED	- M.D. 10-20
	DATE	- 11-96	REVISED - D.S. 05-24

STATE OF ILLINOIS  
DEPARTMENT OF TRANSPORTATION

TRAFFIC CONTROL DETAILS FOR FREEWAY  
SHOULDER CLOSURES AND PARTIAL RAMP CLOSURES

SCALE: NONE SHEET 1 OF 1 SHEETS STA. TO STA.

F.A. RTE.	SECTION	COUNTY	TOTAL SHEETS	SHEET NO.
VAR	2025-1065-TR	VAR	24	24
TC-17		CONTRACT NO. 62Y10		
ILLINOIS		FED. AID PROJECT		