

- ### CONSTRUCTION PHASE NOTES
1. THE CONTRACTOR SHALL GIVE THE AIRPORT SEVEN (7) DAY NOTICE PRIOR TO STARTING ANY PHASE IN ORDER TO ALLOW NOTIFICATIONS TO BE MADE TO TENANTS.
 2. THE CONTRACTOR SHALL ACCESS THE SITE THROUGH THE EXISTING BITUMINOUS MILLINGS ROAD AND THE EXISTING DOUBLE SWING GATE.
 3. THE CONTRACTOR SHALL INSTALL A PAD-LOCK WITHIN THE CHAIN FOR THE DOUBLE SWING ACCESS GATE AND SHALL GIVE A KEY TO THE RESIDENT ENGINEER.
 4. THE CONTRACTOR SHALL LOCK THIS GATE AT THE END OF EACH WORKING DAY.
 5. RUNWAY 18/36 SHALL REMAIN OPEN FOR THE ENTIRE DURATION OF THE PROJECT.
 6. TAXIWAY A SHALL ONLY BE CLOSED DURING WORK IN PHASE 1 CRITICAL AREAS.
 7. CONSTRUCTION ACTIVITIES WILL INCLUDE PAVEMENT MILLING, PAVEMENT REMOVALS, PAVEMENT CONSTRUCTION, PAVEMENT MARKING AND TURFING.
 8. BEFORE MOVING TO THE NEXT PHASE, ALL WORK INVOLVING PAVEMENT MILLING AND PAVEMENT CONSTRUCTION SHALL BE COMPLETED WITHIN EACH PHASE.
 9. CONTRACTOR'S EQUIPMENT SHALL BE RESTRICTED TO 15' MAXIMUM HEIGHT WHEN ACCESSING THE APRON. DELIVERY VEHICLES AND EQUIPMENT GREATER THAN 15' WILL REQUIRE THE CONTRACTOR TO COORDINATE WITH THE AIRPORT THROUGH THE RESIDENT ENGINEER TO ENSURE THAT THE RUNWAY 27R APPROACH SURFACE REMAINS PROTECTED. MAXIMUM EQUIPMENT HEIGHT DURING CONSTRUCTION SHALL BE 25'.
 10. CONTRACTOR SHALL PLACE HIGH PROFILE/FLASHER BARRICADES AS SHOWN DURING THE CLOSURE OF TAXIWAY A ONLY.
 11. TAXIWAY A SHALL ONLY BE CLOSED DURING WORK HOURS WHEN WORK IS WITHIN THE TAXIWAY OBJECT FREE AREA.
 12. WORK WITHIN THE PHASE 1 AND PHASE 2 CRITICAL AREAS SHALL BE EXPEDITED.
 13. ACCESS TO THE FUEL FARM SHALL BE MAINTAINED AS DETERMINED NECESSARY BY THE AIRPORT.

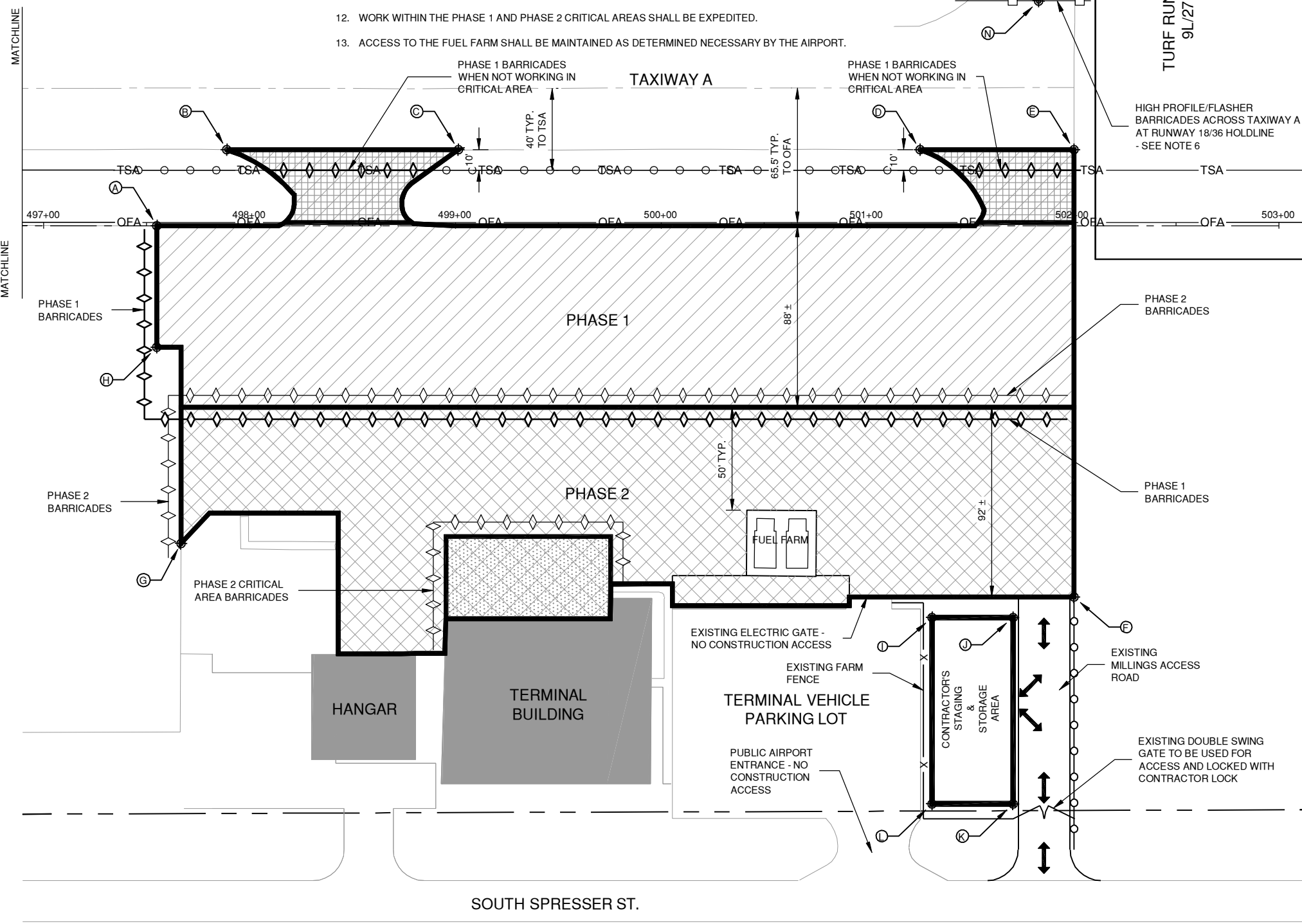
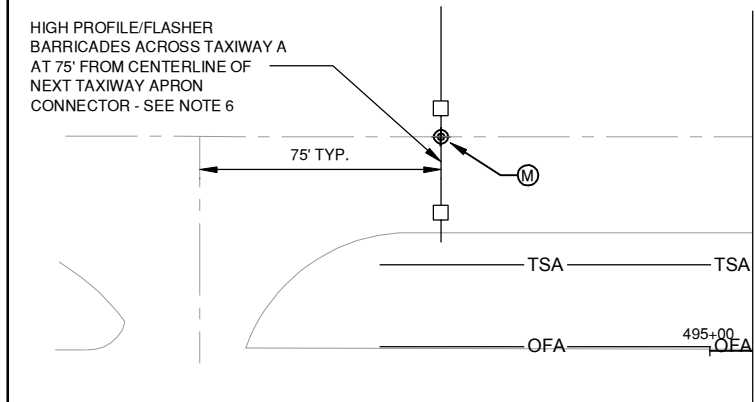
FILE: TAZ-4342-GC002.dwg
 UPDATE BY: Andrew Huebner
 PLOT DATE: 5/1/2014 9:37 AM

TAZ-V-AL
 KEYMAP
 TAZ-1305001-C-SPAL

TA006

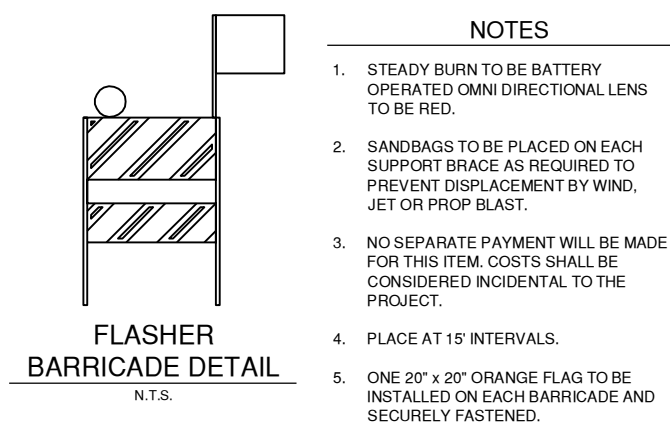
REVISIONS		
NUMBER	BY	DATE

0 1 2
 THIS BAR IS EQUAL TO 2' AT FULL SCALE (34x22).



CRITICAL POINT TABLE

POINT	LATITUDE	LONGITUDE	ELEVATION
A	N 039° 32' 11.8359"	W 089° 19' 34.9273"	614.20
B	N 039° 32' 12.1671"	W 089° 19' 35.4038"	615.50
C	N 039° 32' 13.2777"	W 089° 19' 35.4216"	615.50
D	N 039° 32' 15.4949"	W 089° 19' 35.4544"	615.00
E	N 039° 32' 16.2338"	W 089° 19' 35.4668"	615.00
F	N 039° 32' 16.2592"	W 089° 19' 32.6938"	614.30
G	N 039° 32' 11.9688"	W 089° 19' 32.9601"	614.70
H	N 039° 32' 11.8428"	W 089° 19' 34.1735"	614.30
I	N 039° 32' 15.5796"	W 089° 19' 32.5561"	616.00
J	N 039° 32' 15.9679"	W 089° 19' 32.5621"	616.00
K	N 039° 32' 15.9784"	W 089° 19' 31.4066"	616.00
L	N 039° 32' 15.5902"	W 089° 19' 31.4007"	616.00
M	N 039° 32' 08.4775"	W 089° 19' 35.7310"	617.00
N	N 039° 32' 16.0561"	W 089° 19' 36.3859"	615.00



- ### NOTES
1. STEADY BURN TO BE BATTERY OPERATED OMNI DIRECTIONAL LENS TO BE RED.
 2. SANDBAGS TO BE PLACED ON EACH SUPPORT BRACE AS REQUIRED TO PREVENT DISPLACEMENT BY WIND, JET OR PROP BLAST.
 3. NO SEPARATE PAYMENT WILL BE MADE FOR THIS ITEM. COSTS SHALL BE CONSIDERED INCIDENTAL TO THE PROJECT.
 4. PLACE AT 15' INTERVALS.
 5. ONE 20" x 20" ORANGE FLAG TO BE INSTALLED ON EACH BARRICADE AND SECURELY FASTENED.

TAYLORVILLE MUNICIPAL AIRPORT
 TAYLORVILLE, ILLINOIS

REHABILITATE NORTH PORTION OF AIRCRAFT PARKING APRON CONSTRUCTION ACTIVITY PLAN

© Copyright CMT, Inc.
 CMT
 CRAWFORD, MURPHY & TULLY, INC.
 CONSULTING ENGINEERS
 License No. 184-000618

DESIGN BY: AJH
 DRAWN BY: CMT
 CHECKED BY: CBG
 APPROVED BY: CET
 DATE: APRIL 18, 2014
 JOB No: 13050-01
 IL. PROJ. NO. TAZ-4342
 SBC NO. 3-17-SBGP-XX
 SHEET 03 OF 14 SHEETS

K:\Taylorville\1305001\Draw\Sheets