

# CONSTRUCTION PLANS FOR TAYLORVILLE MUNICIPAL AIRPORT

CITY OF TAYLORVILLE  
TAYLORVILLE, ILLINOIS

ILLINOIS PROJECT TAZ - 4342  
S.B.G. PROJECT 3-17-SBGP-XX

REHABILITATE NORTH PORTION OF  
AIRCRAFT PARKING APRON

SUMMARY OF QUANTITIES			
ITEM NO.	Description	UNIT	QUANTITY
AR150510	ENGINEER'S FIELD OFFICE	LS	1
AR150520	MOBILIZATION	LS	1
AR152410	UNCLASSIFIED EXCAVATION	CY	40
AR152511	SUBGRADE REPAIR	SY	500
AR161900	REMOVE CLASS C FENCE	LF	85
AR162504	CLASS E FENCE 4'	LF	85
AR162570	DETECTOR LOOP	LS	1
AR201660	BITUMINOUS CRACK REPAIR	LF	1,000
AR201672	CRACK CONTROL FABRIC	LF	2,600
AR209606	CRUSHED AGG. BASE COURSE - 6"	SY	500
AR401610	BITUMINOUS SURFACE COURSE	TON	1,055
AR401650	BITUMINOUS PAVEMENT MILLING	SY	8,100
AR401655	BUTT JOINT CONSTRUCTION	SY	500
AR501506	6" PCC PAVEMENT	SY	356
AR501900	REMOVE PCC PAVEMENT	SY	356
AR510510	TIE DOWN	EA	18
AR510900	REMOVE TIE DOWN	EA	20
AR602510	BITUMINOUS PRIME COAT	GAL	60
AR603510	BITUMINOUS TACK COAT	GAL	1,380
AR620520	PAVEMENT MARKING-WATERBORNE	SF	1,415
AR620525	PAVEMENT MARKING-BLACK BORDER	SF	1,025
AR901510	SEEDING	AC	0.12
AR908525	KNITTED STRAW MAT	SY	565

SHEET LIST TABLE	
Sheet Number	Sheet Title
01	COVER SHEET
02	SITE PLAN
03	CONSTRUCTION ACTIVITY PLAN
04	CONSTRUCTION SAFETY PHASING PLAN NOTES
05	EXISTING CONDITIONS AND REMOVALS
06	TYPICAL SECTIONS 1
07	TYPICAL SECTIONS 2
08	PROPOSED IMPROVEMENTS
09	PROPOSED STAKING PLAN
10	PAVEMENT MARKING & TURFING PLAN
11	MISCELLANEOUS DETAILS 1
12	MISCELLANEOUS DETAILS 2
13	MISCELLANEOUS DETAILS 3
14	MISCELLANEOUS DETAILS 4

APRIL 18, 2014

4/28/14  
  
 ANDREW HUEBNER  
 062.065232  
 LICENSED PROFESSIONAL ENGINEER  
 OF ILLINOIS  
 EXPIRES: 11/30/15

**811** Know what's Below. Call before you dig.  
 J.U.L.I.E. JOINT UTILITY LOCATING INFORMATION FOR EXCAVATORS  
 www.illinois1call.com

THE LOCATION, SIZE AND TYPE OF MATERIAL OF EXISTING UNDERGROUND UTILITIES INDICATED ON THE PLANS IS NOT REPRESENTED AS BEING ACCURATE, SUFFICIENT OR COMPLETE. IT SHALL BE THE CONTRACTOR'S RESPONSIBILITY TO DETERMINE ACTUAL LOCATIONS OF ALL SUCH FACILITIES, INCLUDING SERVICE CONNECTORS TO UNDERGROUND UTILITIES. PRIOR TO CONSTRUCTION, THE CONTRACTOR SHALL NOTIFY UTILITY COMPANIES OF HIS OPERATIONAL PLANS, OBTAIN FROM RESPECTIVE UTILITY COMPANIES DETAILED INFORMATION AND ASSISTANCE RELATIVE TO THE LOCATION OF THEIR FACILITIES AND THE WORKING SCHEDULE OF THE COMPANIES FOR REMOVAL OR ADJUSTMENT WHERE REQUIRED. IN THE EVENT AN UNEXPECTED UTILITY INTERFERENCE IS ENCOUNTERED DURING CONSTRUCTION, THE CONTRACTOR SHALL IMMEDIATELY NOTIFY THE UTILITY COMPANY OF JURISDICTION AND THE ONE-CALL NOTICE SYSTEM. THE ENGINEER SHALL ALSO BE IMMEDIATELY NOTIFIED, ANY SUCH UTILITY OR SERVICES SHALL BE RESTORED TO SERVICE AT ONCE AND PAID FOR BY THE CONTRACTOR AT NO ADDITIONAL COST TO THE CONTRACT.

CALL J.U.L.I.E. FOR UTILITY INFORMATION AT 811.

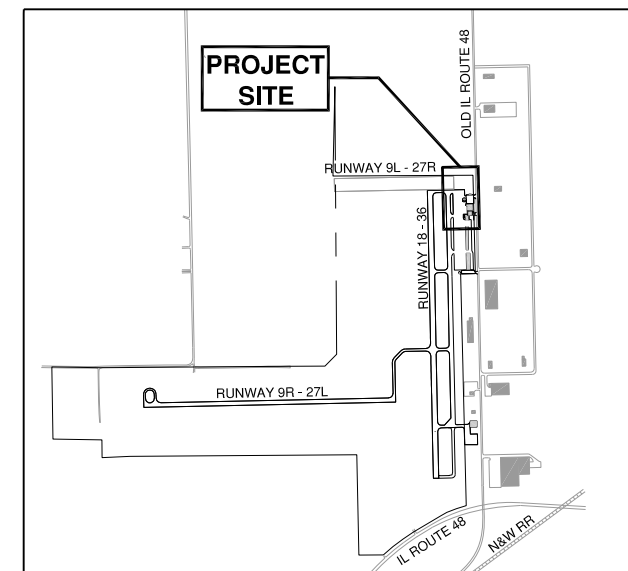
DESIGN INFORMATION  
 GEOMETRIC CRITERIA  
 AIRPLANE DESIGN GROUP II  
 TAXIWAY DESIGN GROUP II  
 PAVEMENT DESIGN CRITERIA  
 AIRCRAFT SINGLE WHEEL GEAR  
 DEPARTURE WEIGHT = 12,500 LBS.  
 100 ANNUAL DEPARTURES

CALL J.U.L.I.E.  
 BEFORE EXCAVATING  
 1-800-892-0123

TOWNSHIP: 13 NORTH  
 RANGE: 2 WEST OF THE 4TH P.M.  
 SECTION: 32  
 COUNTY: CHRISTIAN  
 CIVIL TOWNSHIP: TAYLORVILLE



LOCATION MAP



SITE PLAN

CITY OF TAYLORVILLE  
 TAYLORVILLE MUNICIPAL AIRPORT  
 TAYLORVILLE, ILLINOIS

APPROVED: MAYOR  
 DATE: 4/15/14

APPROVED: CITY CLERK  
 DATE: 4/15/14

CMT  
 CRAWFORD MURPHY & TILLY, INC.  
 CONSULTING ENGINEERS  
 ■ SPRINGFIELD, IL ■ AURORA, IL ■ ST. LOUIS, MO

SUBMITTED BY:   
 DATE: 4/28/14

CMT JOB NUMBER 13050-01