

STATE OF ILLINOIS  
DEPARTMENT OF TRANSPORTATION  
DIVISION OF HIGHWAYS

**PLANS FOR PROPOSED  
SURFACE TRANSPORTATION  
RURAL PROGRAM**

FAYETTE COUNTY  
F.A.S. 651 /C.H. 14  
SECTION 10-00121-00-RS  
RESURFACING  
PROJECT RS-0561 (104)  
JOB #C-97-072-14

ROUTE NO.	SECTION	COUNTY	TOTAL SHEETS	SHEET NO.
C.H. 14	10-00121-00-RS	FAYETTE	24	1
FED. ROAD DIST. NO.	ILLINOIS	CONTRACT NO. 95741		

**INDEX OF SHEETS**

**SHEET NO. DESCRIPTION**

- 1. COVER SHEET
- 2. GENERAL NOTES, STANDARDS, AND MIXTURE REQUIREMENTS
- 3. SUMMARY OF QUANTITIES
- 4. TYPICAL SECTIONS
- 5.-6. SCHEDULE OF QUANTITIES
- 7. ALIGNMENT, TIES, & BENCHMARKS
- 8.-11. PLAN SHEETS
- 12. PLAN & PROFILE
- 13. ENTRANCE DETAIL SHEET
- 14. GUARDRAIL DETAIL SHEET
- 15.-19. CROSS SECTIONS
- 20.-24. STRUCTURE PLANS



FUNCTIONAL CLASSIFICATION: LOCAL ROAD (250-400 ADT)  
DESIGN SPEED: 40 MPH  
DESIGN TRAFFIC: 375 ADT (2015)

**UTILITIES**

FAYETTE COUNTY WATER COMPANY  
RR 1 BOX 71A  
BROWNSTOWN, IL 62418  
DENNY BUCHANAN 618-347-2430

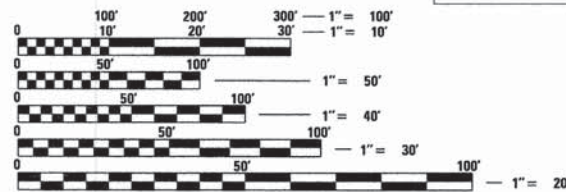
FRONTIER COMMUNICATIONS  
105 MULBERRY  
NORMAL, IL 61761  
MARK BURKS 217-854-2222

VILLAGE OF HERRICK  
5 BROADWAY  
HERRICK, IL 62431  
P.J. GOUR 618-428-5592

AMEREN IP (SOUTH)  
1050 WEST BOULEVARD  
BELLEVILLE, IL 62221  
MARTIN FULLER 618-236-6281

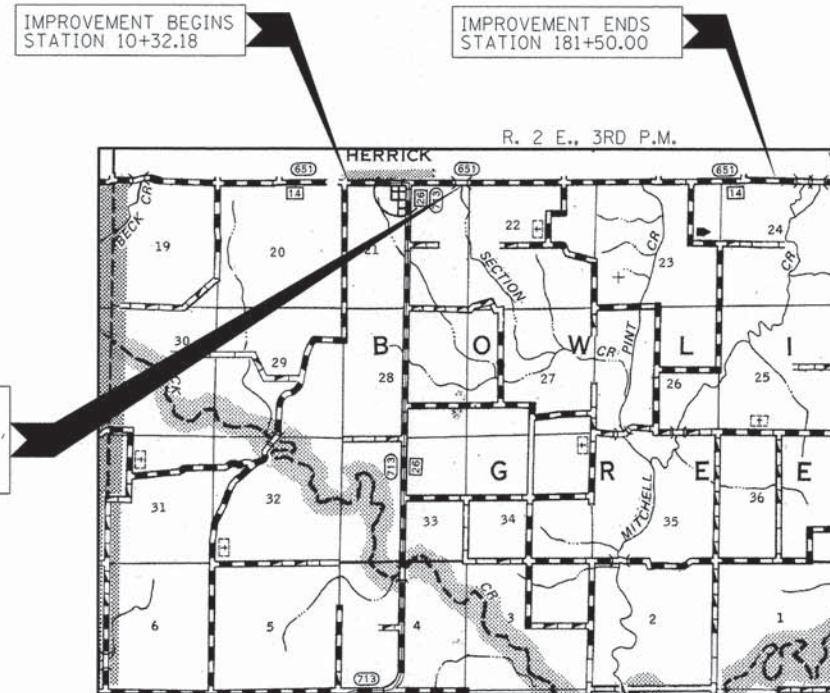
ILLINOIS CONSOLIDATED TELEPHONE  
121 S 17TH. STREET  
MATTOON, IL 61938  
WES CHAMBERS 217-235-3355

MEDIACOM  
DEL LINGAFELTER 217-348-5533



FULL SIZE PLANS HAVE BEEN PREPARED USING STANDARD ENGINEERING SCALES. REDUCED SIZED PLANS WILL NOT CONFORM TO STANDARD SCALES. IN MAKING MEASUREMENTS ON REDUCED PLANS, THE ABOVE SCALES MAY BE USED.

**CONTRACT NO. 95741**



**LOCATION MAP**

APPROXIMATE SCALE: 0 1 MILE

NET LENGTH OF SECTION = 17117.82 FEET = 3.242 MILES  
GROSS LENGTH OF SECTION = 17117.82 FEET = 3.242 MILES

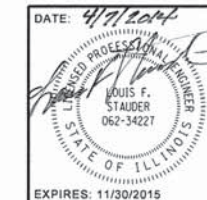
**WARNING**

**ILLINOIS DEPARTMENT OF TRANSPORTATION**

APPROVED: 4-8 2014  
*Walter A. M...*  
COUNTY ENGINEER

PASSED: 4/14 2014  
*Maureen E. K...*  
DISTRICT SEVEN ENGINEER OF LOCAL ROADS & STREETS

Releasing For Bid Based on Limited Review: 4/14 2014  
*Roger L. Diebel...*  
DEPUTY DIRECTOR OF HIGHWAYS  
REGION FOUR ENGINEER  
STATE OF ILLINOIS  
DEPARTMENT OF TRANSPORTATION



**HAMPTON, LENZINI AND RENWICK, INC.**  
CIVIL ENGINEERS • STRUCTURAL ENGINEERS • LAND SURVEYORS  
**HLR**  
3085 STEVENSON DRIVE, SUITE 201  
SPRINGFIELD, ILLINOIS 62703  
217.546.3400 www.hlrengineering.com

**GENERAL NOTES**

1 ALL CONSTRUCTION SHALL BE DONE IN ACCORDANCE WITH THE STATE OF ILLINOIS "STANDARD SPECIFICATIONS FOR ROAD AND BRIDGE CONSTRUCTION, ADOPTED JANUARY 1, 2012," THESE PLANS AND THE SPECIAL PROVISIONS INCLUDED IN THE CONTRACT DOCUMENTS.

2 THE ELEVATIONS SHOWN ON THE PLANS ARE AN ASSUMED DATUM AND ARE NOT U.S.G.S. DATUM.

3 THE LOCATIONS OF EXISTING GAS MAINS, ELECTRIC POWER LINES, TELEPHONE LINES AND OTHER UTILITIES AS SHOWN ON THE PLANS ARE BASED ON CAREFUL FIELD INVESTIGATION AND THE BEST INFORMATION AVAILABLE, BUT THE LOCATIONS ARE NOT GUARANTEED. IT SHALL BE THE CONTRACTOR'S RESPONSIBILITY TO ASCERTAIN THEIR EXACT LOCATION FROM THE INDIVIDUAL UTILITY COMPANIES AND BY FIELD INSPECTION.

4 THE AREA TO BE SEEDED SHALL CONSIST OF ALL DISTURBED EARTH SURFACES WITHIN THE RIGHT OF WAY OR AS DIRECTED BY THE ENGINEER.

**SEEDING, CLASS 2A (SPECIAL) = 0.25 ACRES**

5 THE FOLLOWING RATES OF APPLICATION HAVE BEEN USED IN CALCULATING PLAN QUANTITIES:

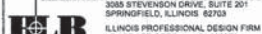
BITUMINOUS MATERIALS (PRIME COAT)	0.1 GAL/SQ.YD.
AGGREGATE (PRIME COAT)	4 LBS/SQ.YD.
HMA SURFACE & BINDER COURSE	112 LBS/SQ.YD./INCH THICKNESS
AGGREGATE SHOULDER WEDGE, TYPE B	2.05 TON/CU.YD.

**HIGHWAY STANDARDS:**

- 000001-06 STANDARD SYMBOLS, ABBREVIATIONS, AND PATTERNS
- 442201-03 CLASS C AND D PATCHES
- 630001-10 STEEL PLATE BEAM GUARDRAIL
- 630301-06 SHOULDER WIDENING FOR TYPE 1, (SPECIAL) GUARDRAIL TERMINALS
- 631032-08 TRAFFIC BARRIER TERMINAL, TYPE 6A
- 635006-03 REFLECTOR AND TERMINAL MARKER PLACEMENT
- 635011-02 REFLECTOR MARKER AND MOUNTING DETAILS
- 701011-03 OFF-ROAD MOVING OPERATIONS 2L, 2W, DAY ONLY
- 701201-04 LANE CLOSURE, 2L, 2W, DAY ONLY, FOR SPEEDS > 45 MPH
- 701306-03 LANE CLOSURE, 2L, 2W, SLOW MOVING OPERATIONS  
- DAY ONLY FOR SPEEDS > 45 MPH
- 701311-03 LANE CLOSURE, 2L, 2W, MOVING OPERATIONS, DAY ONLY
- 701336-06 LANE CLOSURE, 2L, 2W, WORK AREAS IN SERIES, FOR SPEEDS > 45 MPH
- 701901-03 TRAFFIC CONTROL DEVICES
- 780001-04 TYPICAL PAVEMENT MARKINGS
- BLR 21-9 TYPICAL APPLICATION OF TRAFFIC CONTROL;  
DEVICES FOR CONSTRUCTION ON RURAL LOCAL HIGHWAYS

MIXTURE REQUIREMENTS	
LOCATION(S):	F.A.S. 651 / C.H.14
MIXTURE USE(S):	HOT-MIX ASPHALT SURFACE COURSE
AC/PG:	PG 64-22
RAP % (MAX):	SEE BDE 80306
DESIGN AIR VOIDS:	4% @ Ndes 50
MIXTURE COMPOSITION: (GRADATION MIXTURE):	IL 9.5 OR IL 12.5
FRICITION AGGREGATE:	MIXTURE C
MIXTURE WEIGHTS:	112 LBS./SQ. YD. / INCH

MIXTURE REQUIREMENTS	
LOCATION(S):	F.A.S. 651 / C.H.14
MIXTURE USE(S):	HOT-MIX ASPHALT BINDER COURSE
AC/PG:	HOT-MIX ASPHALT BINDER COURSE
RAP % (MAX):	PG 64-22
DESIGN AIR VOIDS:	SEE BDE 80306
MIXTURE COMPOSITION: (GRADATION MIXTURE):	4% @ Ndes 50 IL 19.0
FRICITION AGGREGATE:	NONE
MIXTURE WEIGHTS:	112 LBS./SQ. YD. / INCH THICKNESS

FILE NAME = 138257-shr-notes-seoRS.dgn	USER NAME =	DESIGNED - L.F.S.	REVISED -	<b>STATE OF ILLINOIS FAYETTE COUNTY HIGHWAY DEPARTMENT</b>	<b>GENERAL NOTES, STANDARDS AND MIXTURE REQUIREMENTS</b>	C.H.	SECTION	COUNTY	TOTAL SHEETS	SHEET NO.	
 HAMPTON, LENZINI AND RENWICK, INC. 3085 STEVENSON DRIVE, SUITE 201 SPRINGFIELD, ILLINOIS 62763 ILLINOIS PROFESSIONAL DESIGN FIRM LS / FR / SE CORP. 58-00089	PLOT SCALE =	DRAWN - L.G.C.	REVISED -			14	10-00121-00-RS	FAYETTE	24	2	
	PLOT DATE = 4/7/2014	CHECKED - S.W.M.	REVISED -			CONTRACT NO. 95741					
		DATE - 04/04/14	REVISED -			SCALE:	SHEET NO.	OF	SHEETS	STA.	TO STA.

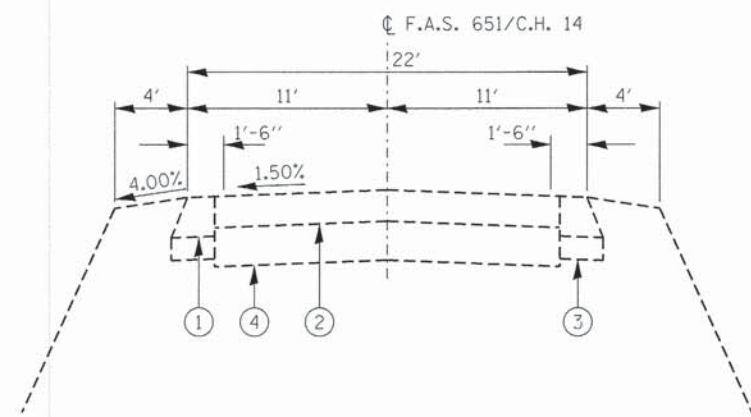
SUMMARY OF QUANTITIES						
ITEM #	CODE #	ITEM	UNIT	TOTAL QUANTITY	ROADWAY QUANTITY	SN 026-3344 QUANTITY
1	20400800	FURNISHED EXCAVATION	CU YD	113	113	
2	40600100	BITUMINOUS MATERIALS (PRIME COAT)	GALLON	4169	4169	
3	40600300	AGGREGATE (PRIME COAT)	TON	83	83	
4	40600982	HOT-MIX ASPHALT SURFACE REMOVAL - BUTT JOINT	SQ YD	96	96	
5	40600990	TEMPORARY RAMP	SQ YD	96	96	
6	40603080	HOT-MIX ASPHALT BINDER COURSE, IL-19.0, N50	TON	3495	3495	
7	40603310	HOT-MIX ASPHALT SURFACE COURSE, MIX "C", N50	TON	3516	3495	21
8	40800050	INCIDENTAL HOT-MIX ASPHALT SURFACING	TON	186	186	
9	44000161	HOT-MIX ASPHALT SURFACE REMOVAL, 3"	SQ YD	43070	43070	
10	44201773	CLASS D PATCHES, TYPE I, 11 INCH	SQ YD	4	4	
11	44201777	CLASS D PATCHES, TYPE II, 11 INCH	SQ YD	8	8	
12	44201781	CLASS D PATCHES, TYPE III, 11 INCH	SQ YD	18	18	
13	44201783	CLASS D PATCHES, TYPE IV, 11 INCH	SQ YD	775	775	
14	44300100	AREA REFLECTIVE CRACK CONTROL TREATMENT	SQ YD	805	805	
15	44300200	STRIP REFLECTIVE CRACK CONTROL TREATMENT	FOOT	17057	17057	
16	48102100	AGGREGATE WEDGE SHOULDER, TYPE B	TON	2590	2590	
17	50400505	PRECAST PRESTRESSED CONCRETE DECK BEAMS (27" DEPTH)	SQ FT	481		481
* 18	50901050	STEEL RAILING, TYPE SM	FOOT	121		121
19	58100200	WATERPROOFING MEMBRANE SYSTEM	SQ YD	191		191
* 20	63000001	STEEL PLATE BEAM GUARDRAIL, TYPE A, 6 FOOT POSTS	FOOT	62.5	62.5	

^ SEE SPECIAL PROVISIONS

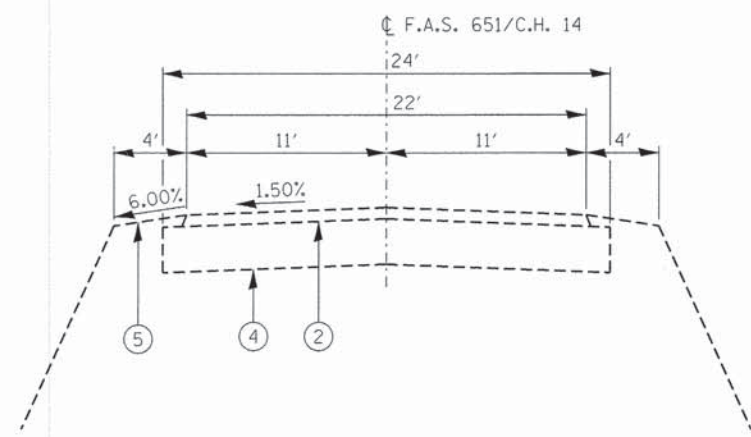
SUMMARY OF QUANTITIES						
ITEM #	CODE #	ITEM	UNIT	TOTAL QUANTITY	ROADWAY QUANTITY	SN 026-3344 QUANTITY
* 21	63100087	TRAFFIC BARRIER TERMINAL, TYPE 6A	EACH	4	4	
* 22	63100167	TRAFFIC BARRIER TERMINAL, TYPE 1 (SPECIAL) TANGENT	EACH	3	3	
* 23	63200310	GUARDRAIL REMOVAL	FOOT	84	84	
24	67100100	MOBILIZATION	L SUM	1	1	
25	70100450	TRAFFIC CONTROL AND PROTECTION, STANDARD 701201	L SUM	1	1	
26	70100460	TRAFFIC CONTROL AND PROTECTION, STANDARD 701306	L SUM	1	1	
27	70100600	TRAFFIC CONTROL AND PROTECTION, STANDARD 701336	L SUM	1	1	
28	70101830	TRAFFIC CONTROL AND PROTECTION, STANDARD BLR 21	L SUM	1	1	
29	70300100	SHORT TERM PAVEMENT MARKING	FOOT	3424	3424	
* 30	78001110	PAINT PAVEMENT MARKING - LINE 4"	FOOT	48439	48439	
* 31	78200410	GUARDRAIL MARKERS, TYPE A	EACH	10	10	
* 32	78201000	TERMINAL MARKER - DIRECT APPLIED	EACH	3	3	
^ 33	X0320047	REMOVAL OF EXISTING PRECAST PRESTRESSED CONCRETE DECK BEAMS	SQ FT	481		481
^ 34	X2020110	GRADING AND SHAPING SHOULDERS	UNIT	684	684	
^ 35	X2501020	SEEDING, CLASS 2A (SPECIAL)	ACRE	0.25	0.25	
* ^ 36	X6330725	STEEL PLATE BEAM GUARDRAIL (SHORT RADIUS)	FOOT	25	25	
^ 37	Z0004556	HOT-MIX ASPHALT SURFACE REMOVAL (DECK)	SQ YD	191		191
^ 38	Z0012754	STRUCTURAL REPAIR OF CONCRETE (DEPTH EQUAL TO OR LESS THAN 5 INCHES)	SQ FT	50		50
^ 39	Z0032700	KEYWAY REPAIR	FOOT	361		361

^ SEE SPECIAL PROVISIONS

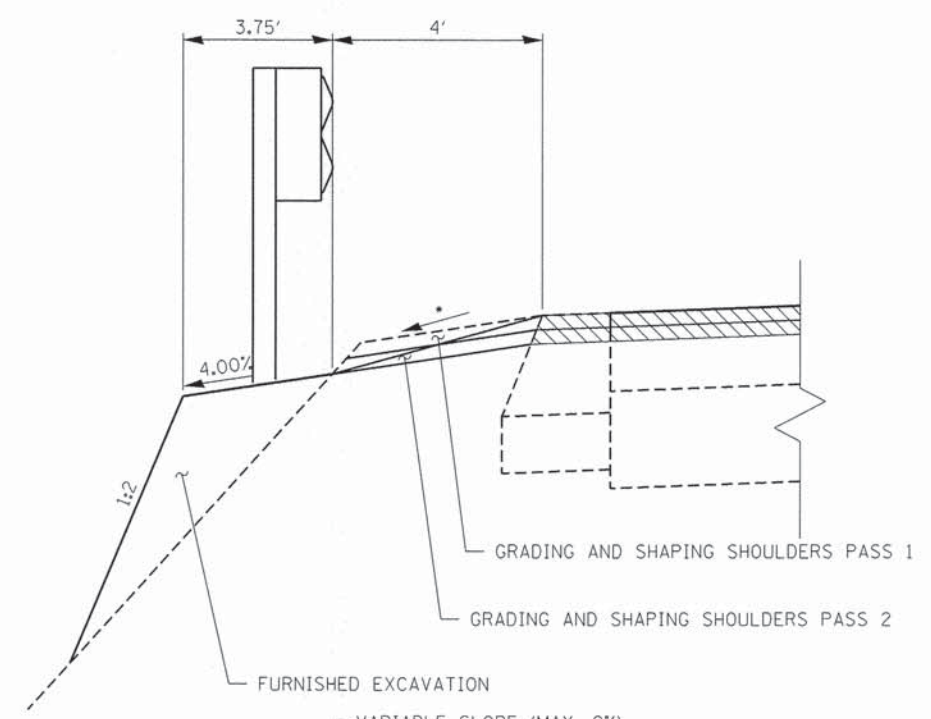
\* SPECIALTY ITEMS



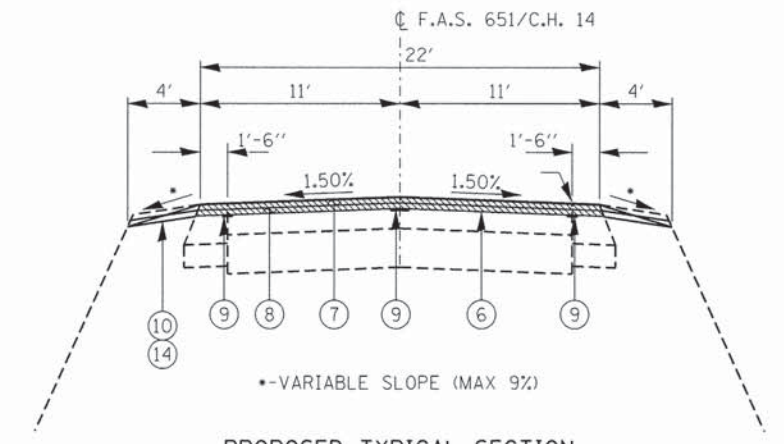
**EXISTING TYPICAL SECTION**  
 STA. 10+32.18 TO STA. 39+95.83  
 STA. 40+57.33 TO STA. 181+26.00



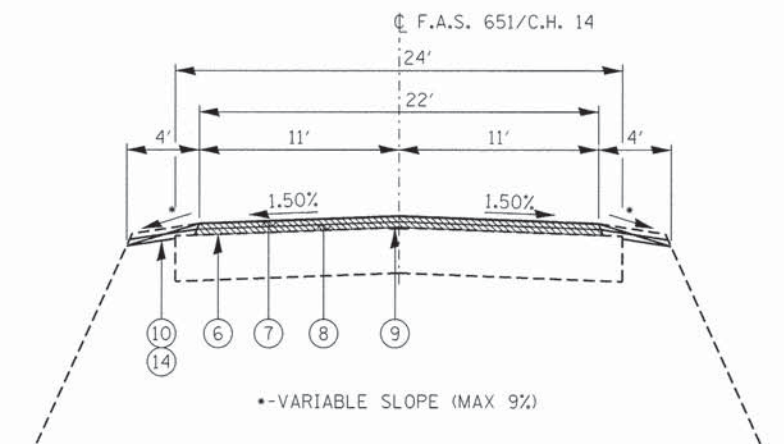
**EXISTING TYPICAL SECTION**  
 STA. 181+26.00 TO STA. 181+50.00



**PROPOSED TRAFFIC BARRIER TERMINAL  
 OR STEEL PLATE BEAM GUARDRAIL  
 TYPE A 6' POSTS**  
 RT. STA. 38+74.54 TO RT. STA. 39+96.42  
 LT. STA. 38+99.54 TO LT. STA. 39+96.42  
 RT. STA. 40+56.75 TO RT. STA. 41+25.00  
 LT. STA. 40+56.75 TO LT. STA. 41+78.63



**PROPOSED TYPICAL SECTION**  
 STA. 10+32.18 TO STA. 39+95.83  
 STA. 40+57.33 TO STA. 181+26.00



**PROPOSED TYPICAL SECTION**  
 STA. 181+26.00 TO STA. 181+50.00

- LEGEND**
- ① EXISTING HMA (THICKNESS 10.5"±)
  - ② EXISTING HMA (THICKNESS 8.25"±)
  - ③ EXISTING AGGREGATE BASE COURSE (THICKNESS 6"±)
  - ④ EXISTING AGGREGATE BASE COURSE (THICKNESS 8"±)
  - ⑤ EXISTING EARTH SHOULDER
  - ⑥ HOT-MIX ASPHALT SURFACE REMOVAL 3"
  - ⑦ HOT-MIX ASPHALT SURFACE COURSE, MIX C, N50 (THICKNESS 1.5")
  - ⑧ HOT-MIX ASPHALT BINDER COURSE, IL 19.0, N50 (THICKNESS 1.5")
  - ⑨ STRIP REFLECTIVE CRACK CONTROL TREATMENT
  - ⑩ AGGREGATE WEDGE SHOULDER, TYPE B
  - ⑪ BRIDGE APPROACH PAVEMENT
  - ⑫ SUB-BASE GRANULAR MATERIAL, TYPE B, 4"
  - ⑬ BRIDGE APPROACH PAVEMENT CONNECTOR (FLEXIBLE)
  - ⑭ GRADING AND SHAPING SHOULDERS

FILE NAME : 130257-sht-typsections.dgn	USER NAME :	DESIGNED - L.F.S.	REVISED -	<b>STATE OF ILLINOIS FAYETTE COUNTY HIGHWAY DEPARTMENT</b>	<b>TYPICAL CROSS SECTIONS F.A.S. 651 / C.H. 14</b>	F.A.S.	SECTION	COUNTY	TOTAL SHEETS	SHEET NO.	
HAMPTON, LENZINI AND RENWICK, INC. 3040 STEVENSON DRIVE, SUITE 201 SPRINGFIELD, ILLINOIS 62763 ILLINOIS PROFESSIONAL DESIGN FIRM LS / PE / SE CORP. 184.000289	PLOT SCALE :	DRAWN - T.W.K.	REVISED -			651	10-00121-00-RS	FAYETTE	24	4	
	PLOT DATE : 4/7/2014	CHECKED - S.W.M.	REVISED -			CONTRACT NO. 95741					
		DATE - 04/04/14	REVISED -			ILLINOIS FED. AID PROJECT					

GUARDRAIL SCHEDULE							
LOCATION	STEEL PLATE BEAM GUARD RAIL TYPE A 6 FOOT POSTS	STEEL PLATE BEAM GUARD RAIL (SHORT RADIUS)	TRAFFIC BARRIER TERMINAL TYPE 6A	TRAFFIC BARRIER TERMINAL TYPE 1 SPECIAL (TANGENT)	GUARD RAIL REMOVAL	TERMINAL MARKER DIRECT APPLIED	GUARDRAIL MARKERS TYPE A
	63000001	X6330725	63100087	63100167	63200310	78201000	78200410
FAS 651\CH14 FAYETTE CO	FOOT	FOOT	EACH	EACH	FOOT	EACH	EACH
SEC 10-00121-00-RS							
RT. STA 38+74.54 TO RT. STA 39+98.92	25		1	1	19	1	
LT. STA 38+99.54 TO LT. STA 39+98.92			1	1	23	1	
RT. STA 40+54.25 TO RT. STA 41+25	12.5	25	1		22		
LT. STA 40+54.25 TO LT. STA 41+78.62	25		1	1	20	1	
RT. STA 38+74.54 TO RT. STA 41+25							5
LT. STA 38+99.54 TO LT. STA 41+78.63							5
SUBTOTAL SEC 10-00121-00-RS	62.5	25	4	3	84	3	10
PROJECT TOTAL	62.5	25	4	3	84	3	10

CLASS D PATCHES 11 INCH					
LOCATION	WTDH FEET	TYPE I	TYPE II	TYPE III	TYPE IV
		44201773 SQ YD	44201777 SQ YD	44201781 SQ YD	44201783 SQ YD
FAS 651\CH14 FAYETTE CO					
SECTION 10-00121-00-RS					
LOCATION 1* LT. STA 10+49 TO LT. STA 10+84	10				39
LOCATION 2* LT. STA 10+84 TO LT. STA 11+16	5			18	
LOCATION 3* RT. STA 16+62 TO RT. STA 17+16	5				30
LOCATION 4* LT. STA 17+22 TO LT. STA 17+97	5				42
LOCATION 5* LT. STA 38+81 TO LT. STA 39+27	6				31
LOCATION 6* LT. STA 39+27 TO LT. STA 39+96	11				84
LOCATION 7* RT. STA 39+45 TO RT. STA 39+96	11				62
LOCATION 8* LT. STA 75+97 TO LT. STA 76+48	8				45
LOCATION 9* LT. STA 76+48 TO LT. STA 78+80	11				284
LOCATION 10* RT. STA 77+44 TO RT. STA 78+36	5				51
LOCATION 11* LT. STA 115+01 TO LT. STA 115+19	4		8		
LOCATION 12* LT. STA 125+42 TO LT. STA 126+04	5				34
LOCATION 13* RT. STA 143+56 TO RT. STA 143+65	4	4			
LOCATION 14* LT. STA 159+07 TO LT. STA 161+26	3				73
TOTAL SECTION 10-00121-00-RS		4	8	18	775
* LOCATION TO BE DETERMINED BY ENGINEER					
TOTAL		4	8	18	775

PAVEMENT MARKING SCHEDULE				
LOCATION	PAINT PAVEMENT MARKING			SHORT TERM PAVEMENT MARKING
	PERMANENT			
	4" SINGLE WHITE EDGE LINE	4" SKIP DASH CENTERLINE	4" SINGLE YELLOW CENTERLINE	
	78001110 FOOT	78001110 FOOT	78001110 FOOT	70300100 FOOT
FAS 651\CH14 FAYETTE CO				
SEC 10-00121-00-RS				
RT. STA 10+32 TO RT. STA 181+50	17218			
CL. STA 10+32 TO CL. STA 181+50		3995	10008	3424
LT. STA 10+32 TO LT. STA 181+50	17218			
TOTAL SEC 10-00121-00-RS	34436	3995	10008	3424
TOTAL PROJECT		48439		3424

EARTHWORK SUMMARY						
LOCATION	EARTH EXCAVATION	SHRINKAGE FACTOR	% USED	EARTH EXCAVATION ADJUSTED FOR SHRINKAGE(25%)	EMBANKMENT REQUIRED	EARTHWORK BALANCE WASTE (+) OR SHORTAGE (-)
	20200100					
	CUBIC YARD			CUBIC YARD	CUBIC YARD	CUBIC YARD
FAS 651\CH14 FAYETTE CO						
SECTION 10-00121-00-RS						
STA 10+32.18 TO STA 39+95.83	0	25.00%	100.00%	0	94	-94
STA 40+57.33 TO STA 181+50	0	25.00%	100.00%	0	19	-19
TOTAL	0			0	113	-113
20400800 FURNISHED EXCAVATION					113	CU.YD.

ROADWAY SCHEDULE												
LOCATION	BITUMINOUS MATERIALS (PRIME COAT) TACK COAT	AGGREGATE (PRIME COAT)	HOT-MIX ASPHALT BINDER COURSE IL-19.0, N50	HOT-MIX ASPHALT SURFACE REMOVAL BUTT JOINT	TEMPORARY RAMP	HOT-MIX ASPHALT SURFACE COURSE MIX "C", N50	INCIDENTAL HOT-MIX ASPHALT SURFACING	HOT-MIX ASPHALT SURFACE REMOVAL 3"	AREA REFLECTIVE CRACK CONTROL TREATMENT	STRIP REFLECTIVE CRACK CONTROL TREATMENT	AGGREGATE WEDGE SHOULDER TYPE B	GRADING AND SHAPING SHOULDERS
	40600100 GAL	40600300 TON	40603080 TON	40600982 SQ YD	40600990 SQ YD	40603310 TON	40800050 TON	44000161 SQ YD	44300100 SQ YD	44300200	48102100 TON	X2020110 UNIT
FAS 651\CH14 FAYETTE CO												
SECTION 10-00121-00-RS												
STA 10+32.18 TO STA 39+95.83	724	14	805	48	48	805		7,196	306	2,964	450	120
STA 40+57.33 TO STA 181+50	3,445	69	2,690	48	48	2,690		34,400	499	14,093	2,140	564
ENTRANCES							186	1,474				
TOTAL	4169	83	3495	96	96	3495	186	43070	805	17057	2590	684

ENTRANCE SUMMARY							
CL STATION	LOC	TYPE	EXISTING		PROPOSED		
			SURFACE	WIDTH	INC HMA SURF	HMA SURF REM	WIDTH
					TON	SQ YD	
10+21.18	RT	SR (30'R)	O&C	22	3	21	22
10+21.18	LT	SR (30'R)	O&C	24	3	21	24
11+18.17	RT	MB					
11+41.50	LT	PE	AGG	10	1	8	10
11+94.14	RT	ALLEY	AGG	15	1	11	15
11+94.14	LT	ALLEY	EARTH	10	1	8	10
12+15.21	RT	PE	AGG	14	1	11	14
12+51.56	RT	MB					
12+92.08	LT	PE	AGG	15	1	11	15
12+98.85	RT	MB					
13+56.49	LT	SR ADAMS AVE (20'R)	O&C	17	7	57	17
13+56.49	RT	SR ADAMS AVE (25'R)	O&C	15	9	71	15
13+92.04	RT	MB					
14+28.73	RT	MB					
14+55.42	LT	PE	O&C	14	1	11	14
15+15.07	RT	ALLEY	EARTH	12	1	9	12
15+15.07	LT	ALLEY	HMA	14	1	11	14
15+53.44	LT	PE	HMA	11	1	9	11
15+46.54	RT	MB					
15+55.31	RT	MB					
15+77.94	RT	PE	AGG	15	1	11	15
16+72.90	LT	SR EAST ST. (25'R & 40'R)	O&C	20	18	142	20
17+06.60	RT	SR EAST ST. (60'R & 45'R)	O&C	22	35	281	22
18+88.11	LT	PE	AGG	14	1	11	14
21+16.70	LT	PE	AGG	32	3	21	32
21+88.83	RT	PE	AGG	18	2	13	18
22+97.88	RT	FE	EARTH	16	2	12	16
23+25.05	LT	SR SUTTON AVE (15'R)	O&C	18	5	41	18
26+55.86	LT	CE	AGG	36	3	23	36
29+81.10	LT	SR BURRIS AVE (25'R)	O&C	17	10	77	17
36+12.81	RT	FE	EARTH	16			16
38+64.18	LT	FE	EARTH	16			16
41+40.00	RT	FE	EARTH	16			16
46+21.79	RT	PE	AGG	18	2	13	18
46+43.73	RT	MB					
50+28.13	LT	PE	AGG	12	1	9	12
51+70.57	LT	PE	CONC	22	2	15	22
52+87.19	LT	PE	EARTH	12	1	9	12
53+99.48	LT	PE	EARTH	14	1	11	14
56+13.51	LT	FE	AGG	11	1	9	11
56+51.41	RT	FE	EARTH	16			16
57+57.33	RT	PE	AGG	28	2	18	28
57+59.98	LT	PE	AGG	18	2	13	18
58+96.23	LT	FE	AGG	14			14
59+85.18	RT	FE	EARTH	16			16
63+39.64	RT	PE	AGG	22	2	15	22
63+67.56	RT	MB					
64+70.25	RT	MB					
64+81.00	LT	PE	O&C	18	2	13	18
82+06.89	RT	FE	EARTH	16			16
82+11.22	LT	FE	EARTH	16			16
82+89.10	RT	SR CR1575E (30'R & 22'R)	O&C	18	12	93	18
82+92.40	LT	SR CR1575E (22'R & 30'R)	O&C	18	12	93	18
84+28.00	LT	PE	AGG	14	1	11	14
85+21.00	LT	PE	AGG	12	1	9	12
96+44.61	RT	FE	AGG	16			16

ENTRANCE SUMMARY							
CL STATION	LOC	TYPE	EXISTING		PROPOSED		
			SURFACE	WIDTH	INC HMA SURF	HMA SURF REM	WIDTH
					TON	SQ YD	
102+53.79	LT	PE	AGG	18	2	13	18
102+66.27	RT	MB					
104+24.26	FE	LT	EARTH	16			16
104+80.12	RT	MB					
104+84.62	LT	PE	AGG	18	2	13	18
106+29.25	LT	FE	AGG	14	1	11	14
109+49.50	RT	FE	EARTH	16			16
116+23.65	LT	PE	AGG	24	2	16	24
121+28.49	RT	FE	EARTH	16			16
122+50.38	LT	SR1650E (25'R & 20'R)	O&C	15	8	66	15
135+76.10	RT	SR 1675 (20'R)	O&C	19	8	61	19
135+77.39	LT	FE	EARTH	16			16
143+50.18	RT	FE	EARTH	16			16
144+56.54	LT	FE	EARTH	16			16
153+28.40	RT	FE	AGG	24			24
157+15.49	LT	SR 1125 E (20' R)	GRAVEL	12	6	46	12
157+78.90	RT	FE	EARTH	16			16
165+97.29	LT	FE	EARTH	16			16
169+28.40	RT	FE	EARTH	16			16
175+07.34	RT	PE	AGG	17	2	12	17
179+33.00	LT	FE	AGG	20	2	14	20
TOTAL					186	1474	

FILE NAME = 130257-sht-schedule-secRS.dwg USER NAME =  
**HAMPTON, LENZINI AND RENWICK, INC.**  
 3045 STEVENSON DRIVE, SUITE 201  
 SPRINGFIELD, ILLINOIS 62703  
 ILLINOIS PROFESSIONAL DESIGN FIRM  
 LS / PE / SE CORP. 134-000959

DESIGNED - L.F.S. REVISED -  
 DRAWN - L.G.C. REVISED -  
 CHECKED - S.W.M. REVISED -  
 DATE - 04/04/14 REVISED -

**STATE OF ILLINOIS  
 FAYETTE COUNTY HIGHWAY DEPARTMENT**

**SCHEDULE OF QUANTITIES**

SCALE: SHEET NO. OF SHEETS STA. TO STA.

C.H.	SECTION	COUNTY	TOTAL SHEETS	SHEET NO.
14	10-00121-00-RS	FAYETTE	24	6
CONTRACT NO. 95741			ILLINOIS FED. AID PROJECT	

BENCHMARKS

BM 18 NE BOLT ON FIRE HYDRANT AT SW CORNER OF CH14 AND CH26(1450E RD)  
32.95' RT. STA. 16+51.50 ELEVATION 601.87

BM 17 NE BOLT ON FIRE HYDRANT AT NW CORNER OF CH 14 AND BURRIS AVE  
35.83' LT. STA. 29+59.61 ELEVATION 594.69

BM 16 RR SPIKE IN POWER POLE WEST OF SN 026-3344(E) NORTH SIDE OF CH14  
46.37' LT. STA.38+82.62 ELEVATION 547.76

BM 15 CROSS NOTCH SQUARE ON NW WINGWALL OF SN 026-3344(E)  
14.95' LT. STA.39+96.85 ELEVATION 553.91

BM 14 MAG NAIL ON CENTERLINE OF CH 14 AT STA 49+97.17  
ELEVATION 580.09

BM 13 MAG NAIL ON CENTERLINE OF CH 14 AT STA 59+97.17  
ELEVATION 585.44

BM 12 MAG NAIL ON CENTERLINE OF CH 14 AT STA 69+97.21  
ELEVATION 591.64

BM 11 MAG NAIL ON CENTERLINE OF CH 14 AT STA 79+97.23  
ELEVATION 598.53

BM 10 MAG NAIL ON CENTERLINE OF CH 14 AT STA 89+97.23  
ELEVATION 591.56

BM 9 MAG NAIL ON CENTERLINE OF CH 14 AT STA 99+97.18  
ELEVATION 581.93

BM 8 CROSS NOTCH SQUARE ON HEADWALL OF 10' X 6' BOX CULVERT ON NORTH SIDE OF CH14 WEST OF SHELBY COUNTY TWP RD 1050E  
23.59' LT. STA.115+18.05 ELEVATION 556.85

BM 7 IRON ROD AT N 1/4 X SECTION 23-8-2 NEAR CENTERLINE OF CH14 AT STA 122+49.90  
ELEVATION 568.36

BM 6 CROSS NOTCH SQUARE ON TOP OF HEADWALL AT SE CORNER OF TWP 1675E RD AND CH14  
25.73' RT. STA.135+87.76 ELEVATION 560.32

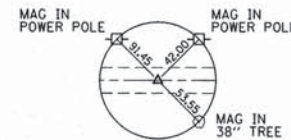
BM 5 MAG NAIL ON CENTERLINE OF CH 14 AT STA 152+50  
ELEVATION 580.83

BM 4 MAG NAIL ON CENTERLINE OF CH 14 AT STA 165+00  
ELEVATION 568.95

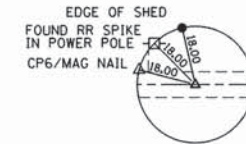
BM 3 RR SPIKE IN POWER POLE WEST OF SN 026-3261(E) SOUTH SIDE OF CH14  
48.68' RT. STA.183+00.65 ELEVATION 523.44

BM 2 CROSS NOTCH SQUARE ON SE WINGWALL OF SN 026-3261  
12.10' RT. STA.185+23.10 ELEVATION 531.01

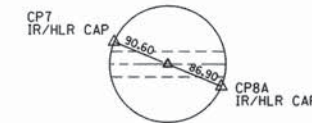
BM 1 SQUARE CUT IN TOP OF WINGWALL OF LARGE BOX CULVERT SN026-5000 EAST OF MITCHELL CREEK S SIDE OF CH14  
25.75' LT. STA.186+96.50 ELEVATION 526.17



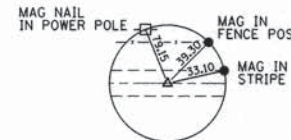
P.O.T. STA. 10+21.18  
MAG NAIL (SET)  
N. 929009.17  
E. 1799680.05



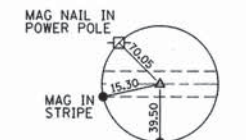
P.I. STA. 24+32.40  
MAG NAIL (SET)  
N. 929019.35  
E. 801091.24



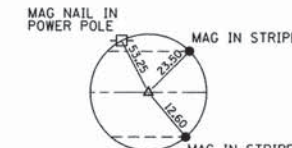
P.I. STA. 40+26.58  
MAG NAIL (SET)  
N. 929025.57  
E. 8026685.40



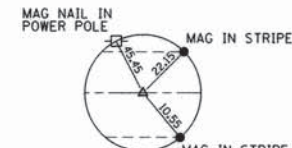
P.O.T. STA. 49+97.17  
MAG NAIL (SET)  
N. 929028.29  
E. 803655.99



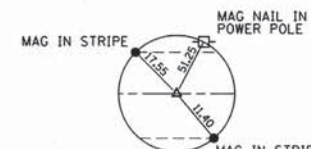
P.O.T. STA. 59+97.17  
MAG NAIL (SET)  
N. 929031.11  
E. 804655.99



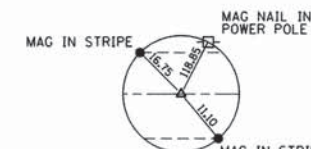
P.O.T. STA. 69+97.21  
MAG NAIL (SET)  
N. 929033.99  
E. 805656.03



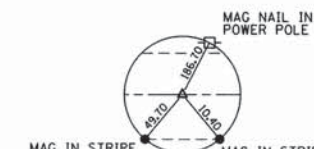
P.O.T. STA. 79+97.23  
MAG NAIL (SET)  
N. 929036.77  
E. 806656.04



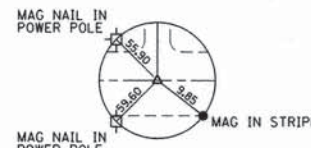
P.O.T. STA. 89+97.23  
MAG NAIL (SET)  
N. 929039.57  
E. 807656.03



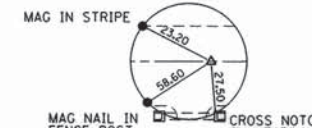
P.O.T. STA. 99+97.18  
MAG NAIL (SET)  
N. 929042.46  
E. 808655.98



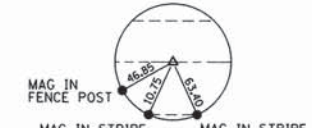
P.O.T. STA. 109+97.19  
MAG NAIL (SET)  
N. 929045.21  
E. 809655.99



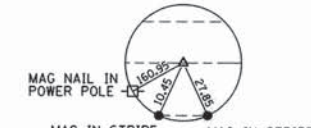
P.I. STA. 122+49.87  
MAG NAIL (SET)  
N. 929048.77  
E. 810908.66



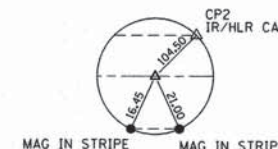
P.O.T. STA. 135+97.17  
MAG NAIL (SET)  
N. 929052.46  
E. 812255.96



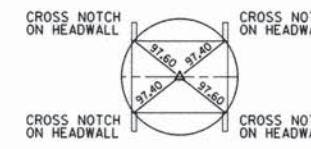
P.O.T. STA. 152+50.00  
MAG NAIL (SET)  
N. 929057.00  
E. 813908.78



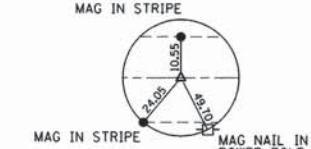
P.O.T. STA. 165+00.00  
MAG NAIL (SET)  
N. 929060.47  
E. 815158.80



P.O.T. STA. 178+50.00  
MAG NAIL (SET)  
N. 929064.18  
E. 816508.75



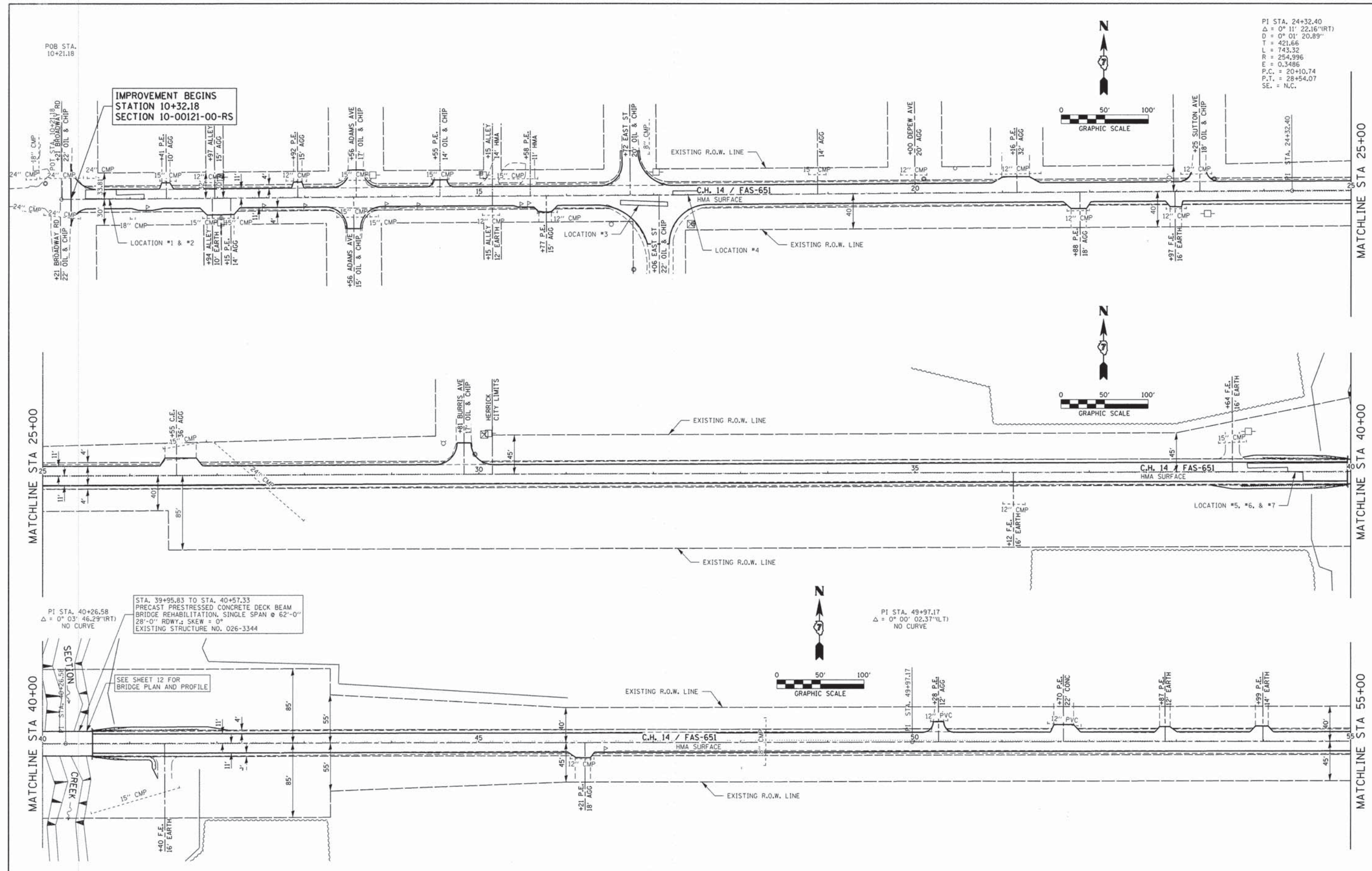
P.O.T. STA. 184+23.40  
MAG NAIL (SET)  
N. 929065.75  
E. 817082.17



P.O.T. STA. 192+00.00  
MAG NAIL (SET)  
N. 929067.89  
E. 817858.73



FILE NAME : 130257-sht-ties.dgn	USER NAME :	DESIGNED - L.F.S.	REVISED -	<b>STATE OF ILLINOIS FAYETTE COUNTY HIGHWAY DEPARTMENT</b>	<b>BENCHMARKS &amp; ALIGNMENT TIES</b>	C.H.	SECTION	COUNTY	TOTAL SHEETS	SHEET NO.
HAMPTON, LENZINI AND RENWICK, INC. 3840 STEVENSON DRIVE, SUITE 201 SPRINGFIELD, ILLINOIS 62761 ILLINOIS PROFESSIONAL DESIGN FIRM LS / PE / SE CORP. 184.000889	DRAWN - L.G.C.	REVISED -	14			10-00121-00-RS	FAYETTE	24	7	
PLOT SCALE :	CHECKED - S.W.M.	REVISED -	CONTRACT NO. 95741							
PLOT DATE : 4/7/2014	DATE - 04/04/14	REVISED -	ILLINOIS FED. AID PROJECT							
				SCALE: SHEET NO. OF SHEETS STA. 10+21.18 TO STA. 192+00.00						



PI STA. 24+32.40  
 $\Delta = 0^\circ 11' 22.16''$ (RT)  
 $D = 0^\circ 01' 20.89''$   
 $T = 421.66$   
 $L = 743.32$   
 $R = 254,996$   
 $E = 0.3486$   
 $P.C. = 20+10.74$   
 $P.T. = 28+54.07$   
 $SE. = N.C.$

IMPROVEMENT BEGINS  
 STATION 10+32.18  
 SECTION 10-00121-00-RS

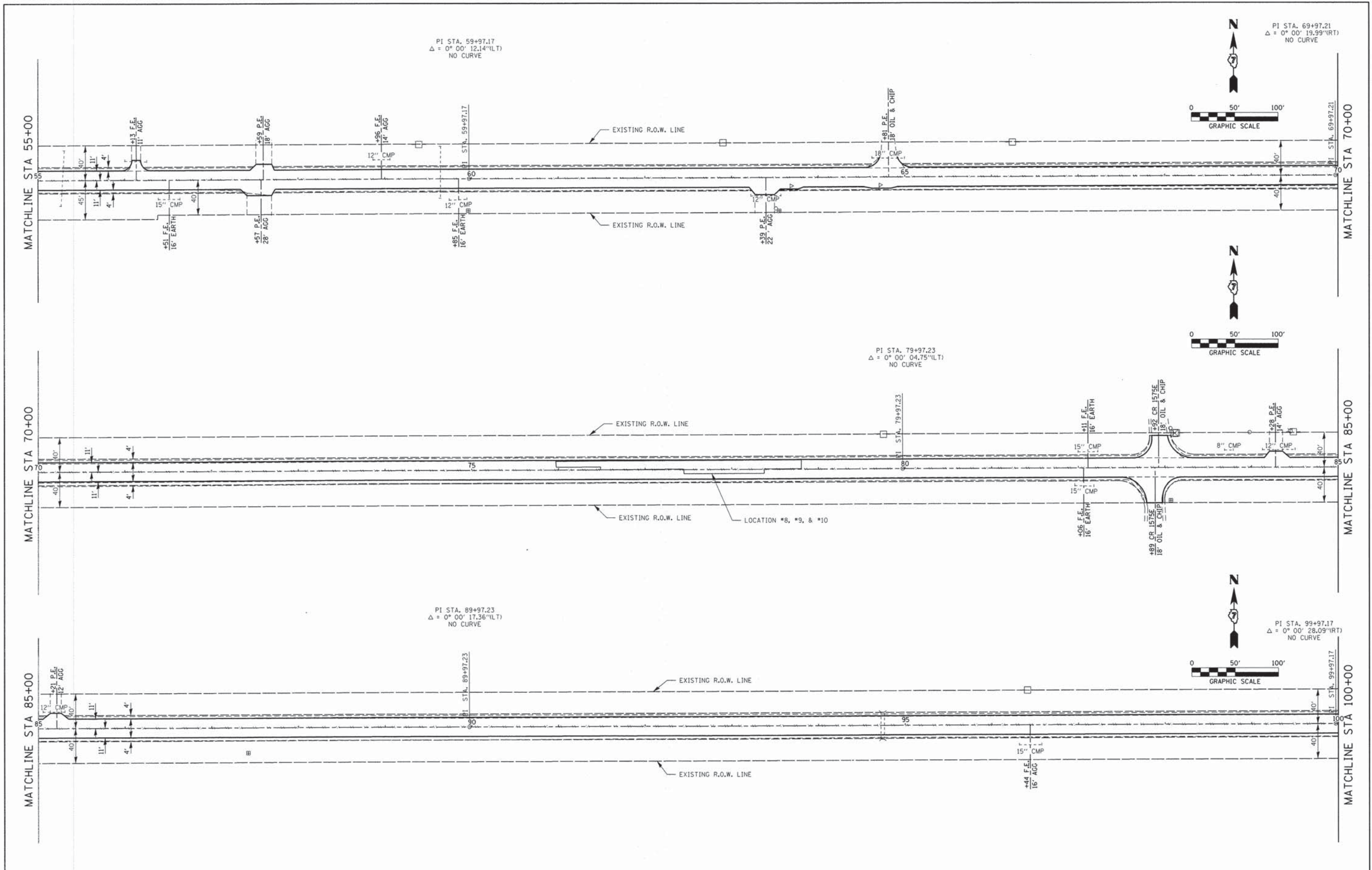
STA. 39+95.83 TO STA. 40+57.33  
 PRECAST PRESTRESSED CONCRETE DECK BEAM  
 BRIDGE REHABILITATION, SINGLE SPAN @ 62'-0"  
 28'-0" ROWY., SKEW = 0°  
 EXISTING STRUCTURE NO. 026-3344

PI STA. 40+26.58  
 $\Delta = 0^\circ 03' 46.29''$ (RT)  
 NO CURVE

PI STA. 49+97.17  
 $\Delta = 0^\circ 00' 02.37''$ (LT)  
 NO CURVE

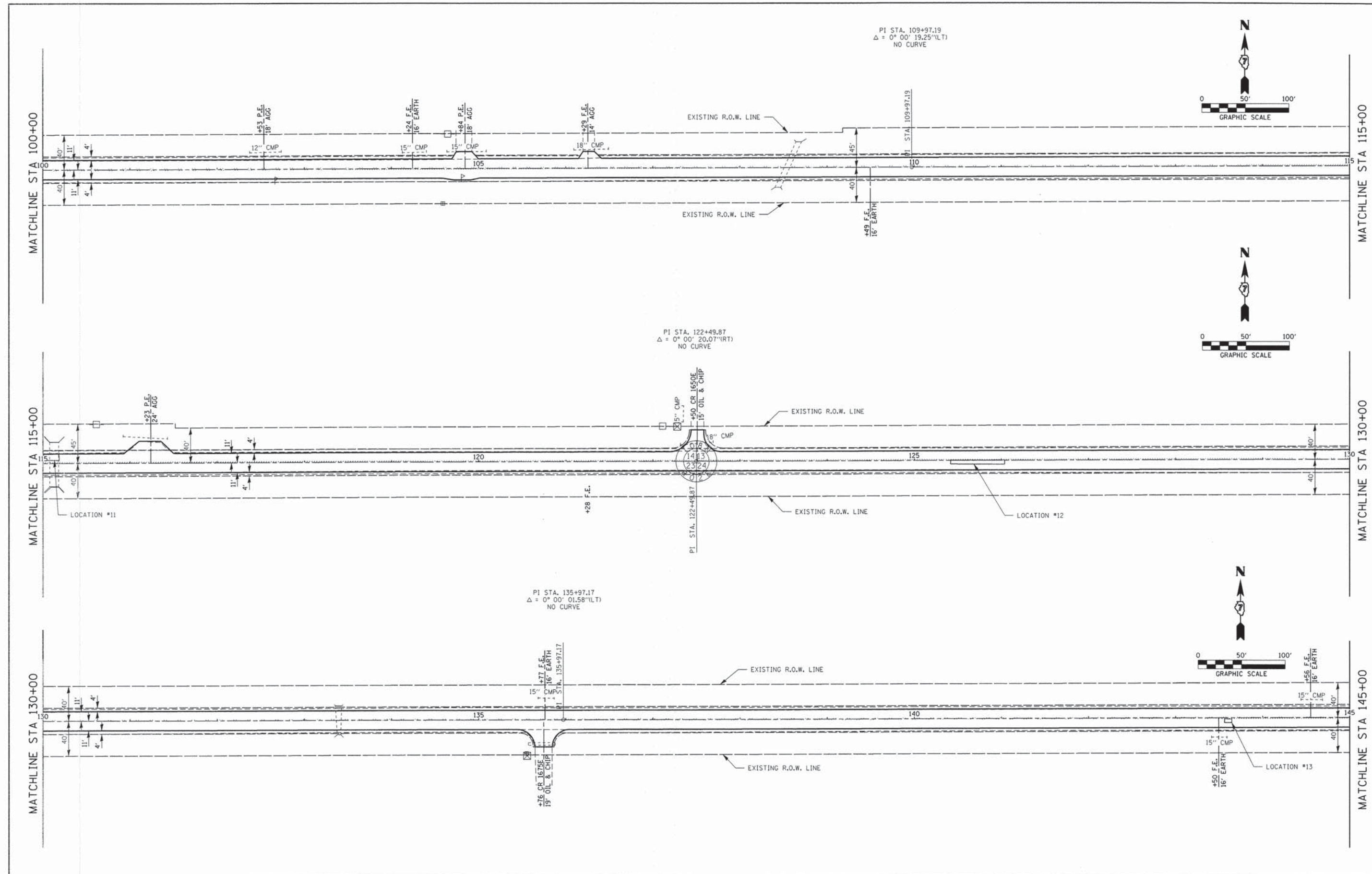
FILE NAME = 130257-sht-resurface.dgn	USER NAME =	DESIGNED - L.F.S.	REVISED -	<b>STATE OF ILLINOIS FAYETTE COUNTY HIGHWAY DEPARTMENT</b>	<b>PLAN C.H. 14 / 3300 N</b>	FAS	SECTION	COUNTY	TOTAL SHEETS	SHEET NO.	
HAMPTON, LENZINI AND RENWICK, INC. 3305 STEVENSON DRIVE, SUITE 201 SPRINGFIELD, ILLINOIS 62703 ILLINOIS PROFESSIONAL DESIGN FIRM L3 / PC / SE CORP. 184.000959	PLOT SCALE =	DRAWN - L.G.C.	REVISED -			651	10-00121-00-RS	FAYETTE	24	8	
PLOT DATE = 4/7/2014	DATE - 04/04/14	CHECKED - S.W.M.	REVISED -			CONTRACT NO. 95741		ILLINOIS FED. AID PROJECT			
		DATE - 04/04/14	REVISED -			SCALE: 1:50	SHEET NO. OF SHEETS	STA. 10+00.00 TO STA. 55+00.00			





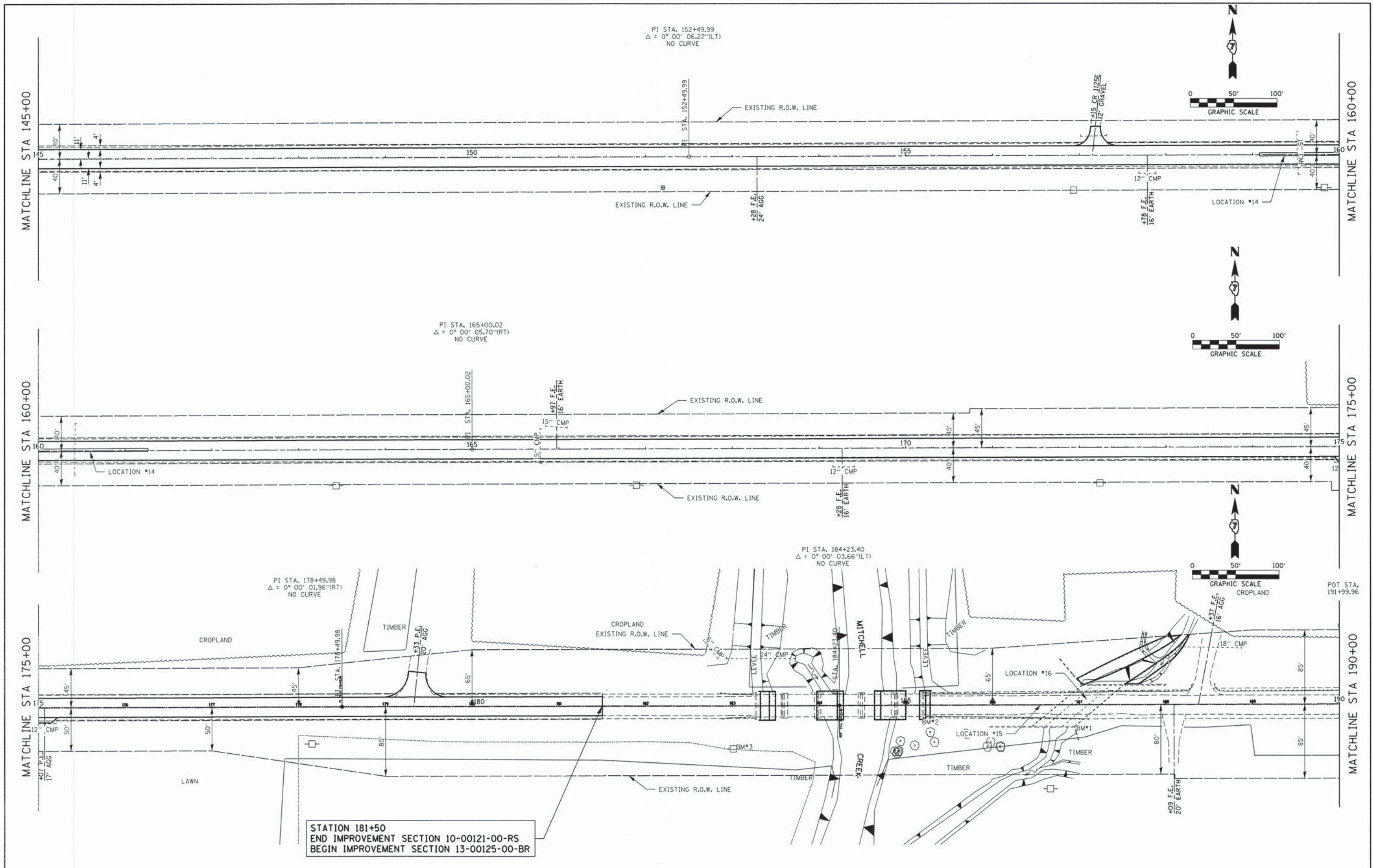
FILE NAME = 130257-sh1-resurface.dgn	USER NAME =	DESIGNED - L.F.S.	REVISED -	<b>STATE OF ILLINOIS FAYETTE COUNTY HIGHWAY DEPARTMENT</b>	<b>PLAN C.H. 14 /3300 N</b>	FAS	SECTION	COUNTY	TOTAL SHEETS	SHEET NO.	
<b>HAMPTON, LENZINI AND RENWICK, INC.</b> 2040 STEVENSON DRIVE, SUITE 201 BROOKFIELD, ILLINOIS 60513 ILLINOIS PROFESSIONAL DESIGN FIRM LS / PE / SE COMP. 194.00099	PLOT SCALE =	DRAWN - L.G.C.	REVISED -			651	10-00121-00-RS	FAYETTE	24	9	
PLOT DATE = 4/7/2014	DATE - 04/04/14	CHECKED - S.W.M.	REVISED -			CONTRACT NO. 95741					
		DATE - 04/04/14	REVISED -			ILLINOIS FED. AID PROJECT					

SCALE: 50 SHEET NO. OF SHEETS STA. 55+00.00 TO STA. 100+00.00



FILE NAME = 130257-sht-resurf.dgn	USER NAME =	DESIGNED - L.F.S.	REVISED -	<b>STATE OF ILLINOIS FAYETTE COUNTY HIGHWAY DEPARTMENT</b>	<b>PLAN C.H. 14 / 3300 N</b>	FAS	SECTION	COUNTY	TOTAL SHEETS	SHEET NO.	
<b>HAMPTON, LENZINI AND RENWICK, INC.</b> 3060 STEVENSON DRIVE, SUITE 201 SPRINGFIELD, ILLINOIS 62763 ILLINOIS PROFESSIONAL DESIGN FIRM LS / PE / SE COMP. 184.000000	PLOT SCALE =	DRAWN - L.G.C.	REVISED -			651	10-00121-00-RS	FAYETTE	24	10	
PLOT DATE = 4/7/2014	DATE - 04/04/14	CHECKED - S.W.M.	REVISED -			CONTRACT NO. 95741					
						ILLINOIS FED. AID PROJECT					

SCALE: 50 SHEET NO. OF SHEETS STA. 100+00.00 TO STA. 145+00.00



STATION 181+50  
 END IMPROVEMENT SECTION 10-00121-00-RS  
 BEGIN IMPROVEMENT SECTION 13-00125-00-BR

FILE NAME = 130257-shr-resurface.dgn	USER NAME =
<b>HAMPTON, LENZINI AND RENWICK, INC.</b> <small>3045 STEVENSON DRIVE, SUITE 201      SPRINGFIELD, ILLINOIS 62783      ILLINOIS PROFESSIONAL DESIGN FIRM      L3 / PE / SE CORP. 194.003989</small>	PLOT SCALE =
	PLOT DATE = 4/7/2014

DESIGNED - L.F.S.	REVISED -
DRAWN - L.G.C.	REVISED -
CHECKED - S.W.M.	REVISED -
DATE - 04/04/14	REVISED -

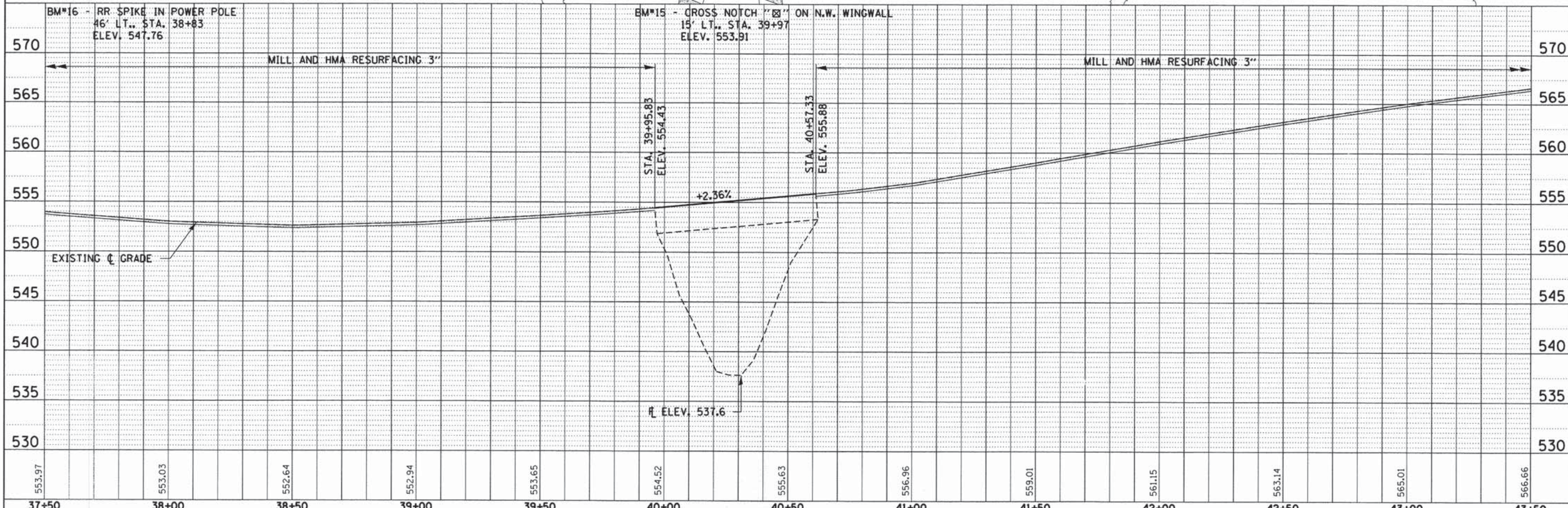
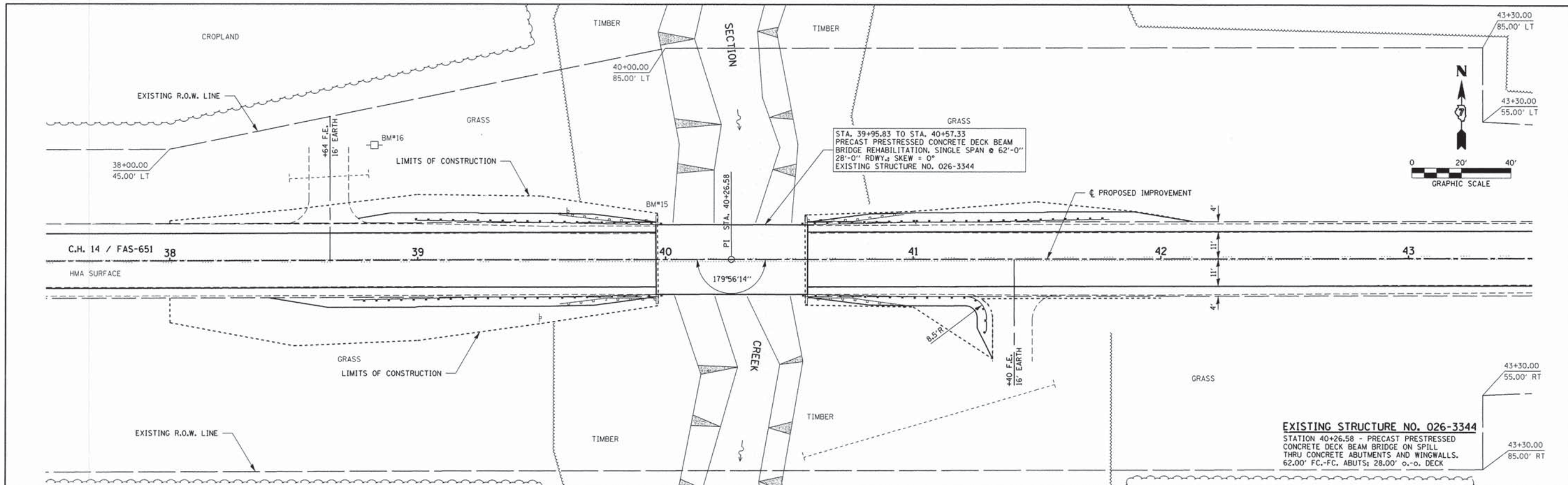
**STATE OF ILLINOIS  
 FAYETTE COUNTY HIGHWAY DEPARTMENT**

<b>PLAN C.H. 14 / 3300 N</b>	
SCALE: 50	SHEET NO. OF SHEETS STA. 100+00.00 TO STA. 145+00.00

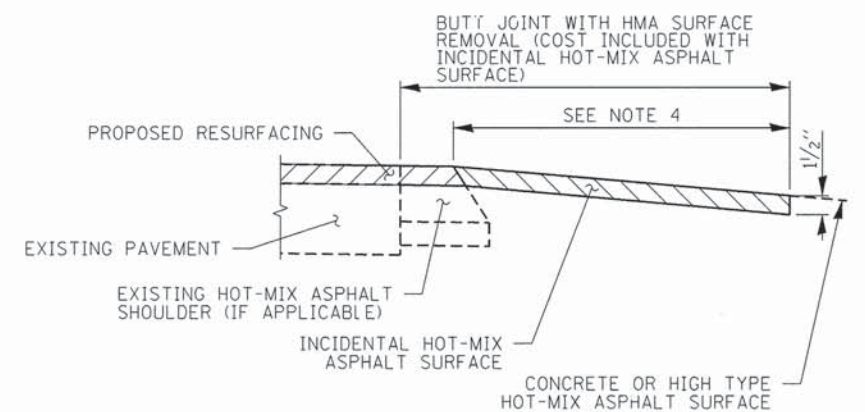
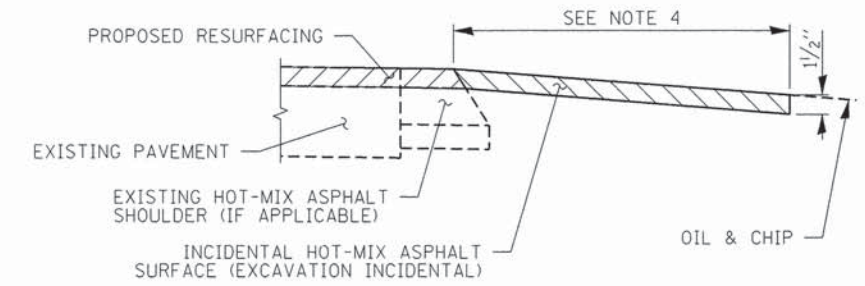
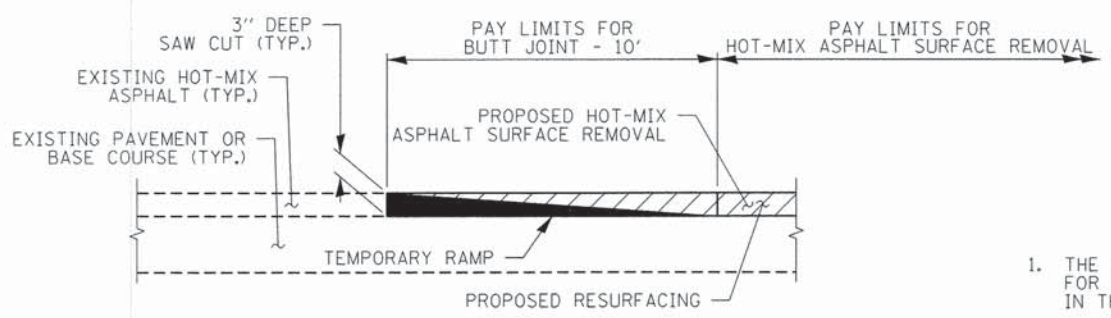
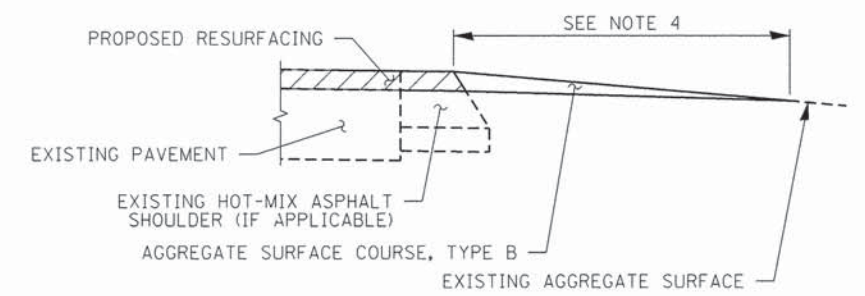
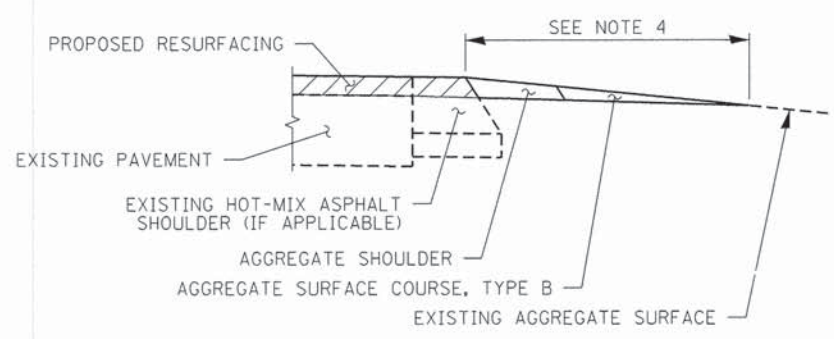
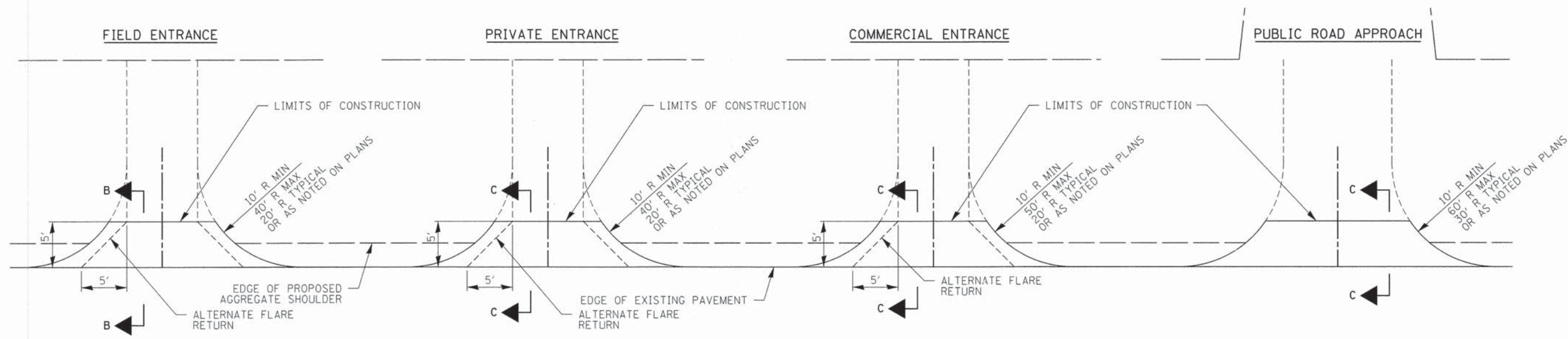
FAS	SECTION	COUNTY	TOTAL SHEETS	SHEET NO.
651	10-00121-00-RS	FAYETTE	24	11
CONTRACT NO. 95741				
ILLINOIS FED. AID PROJECT				

DATE	
BY	
SURVEYED	
GRADES CHECKED	
ALIGNED	
NOTED	
STRUCTURE	
NOTATIONS	
CHKD	
NO.	
PLAN	
NOTE BOOK	
NO.	
NO.	
NO.	

DATE	
BY	
SURVEYED	
GRADES CHECKED	
ALIGNED	
NOTED	
STRUCTURE	
NOTATIONS	
CHKD	
NO.	
PROFILE	
NOTE BOOK	
NO.	
NO.	



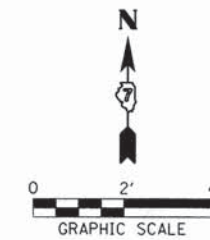
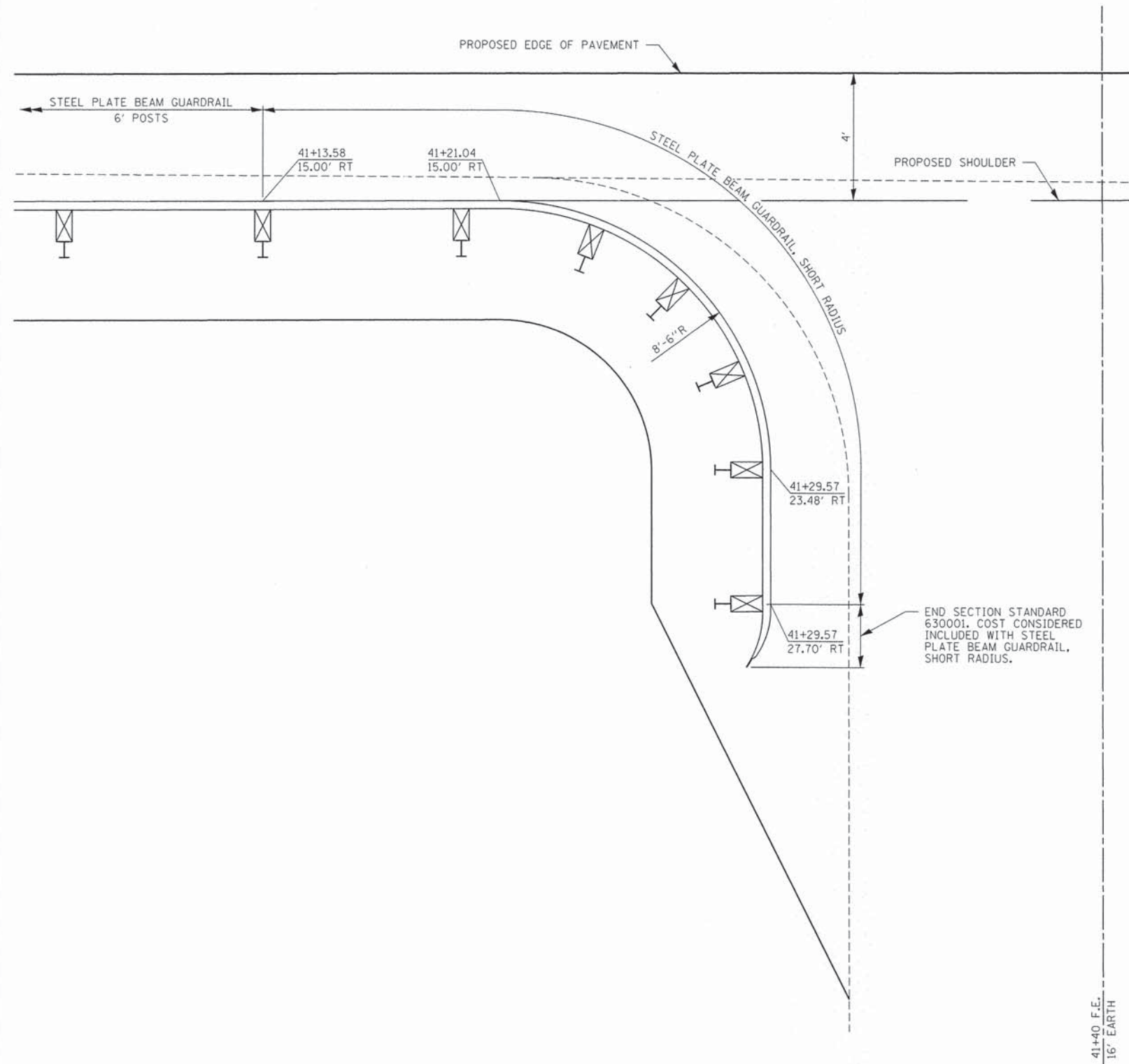
FILE NAME = 130257-sh1-p&g.dgn	USER NAME =	DESIGNED - J.W.F.	REVISED -	<p align="center"><b>STATE OF ILLINOIS</b> <b>FAYETTE COUNTY HIGHWAY DEPARTMENT</b></p>	<p align="center"><b>PLAN &amp; PROFILE</b> <b>C.H. 14 / 3000N</b></p>	C.H.	SECTION	COUNTY	TOTAL SHEETS	SHEET NO.
<b>HAMPTON, LENZINI AND RENWICK, INC.</b> 3005 STEVENSON DRIVE, SUITE 201 SPRINGFIELD, ILLINOIS 62703 ILLINOIS PROFESSIONAL DESIGN FIRM L.S. / P.E. / S.E. / C.O.P.E. / 184-000089		DRAWN - L.G.C.	REVISED -			14	10-00121-00-RS	FAYETTE	24	12
PLOT SCALE =		CHECKED - S.W.M.	REVISED -			CONTRACT NO. 95741				
PLOT DATE = 4/7/2014		DATE - 04/04/14	REVISED -			ILLINOIS FED. AID PROJECT				



**NOTES**

1. THE COST OF THE ASPHALT MATERIALS, AND AGGREGATE (PRIME COAT) FOR ENTRANCES AND PUBLIC ROADS AND APPROACHES SHALL BE INCLUDED IN THE PAY ITEM, INCIDENTAL HOT-MIX ASPHALT SURFACING.
2. THE COST OF EXCAVATION IS INCLUDED IN THE PAY ITEM, INCIDENTAL HOT-MIX ASPHALT SURFACING.
3. IF THERE IS NOT HOT-MIX ASPHALT SHOULDER THEN THE ENTRANCE TAPER STARTS AT THE EDGE OF EXISTING PAVEMENT
4. LENGTH = 5' UNLESS OTHERWISE NOTED ON PLANS.

FILE NAME = 138257-shr-ent-detail.dgn	USER NAME =	DESIGNED - L.F.S.	REVISED -	<b>STATE OF ILLINOIS FAYETTE COUNTY HIGHWAY DEPARTMENT</b>	<b>ENTRANCE DETAILS F.A.S. 651 / C.H. 14</b>			F.A.S.	SECTION	COUNTY	TOTAL SHEETS	SHEET NO.
HAMPTON, LENZINI AND RENWICK, INC. 3045 STEVENSON DRIVE, SUITE 201 SPRINGFIELD, ILLINOIS 62703	PLOT SCALE =	DRAWN - T.W.K.	REVISED -		651	10-00121-00-R5	FAYETTE	24	13			
ILLINOIS PROFESSIONAL DESIGN FIRM L.L.P. / P.E. / S.E. CORP. 184.000908	PLOT DATE = 4/7/2014	CHECKED - S.W.M.	REVISED -		CONTRACT NO. 95741			ILLINOIS FED. AID PROJECT				
		DATE - 04/04/14	REVISED -		SCALE: NONE	SHEET NO.	OF SHEETS	STA.	TO STA.			



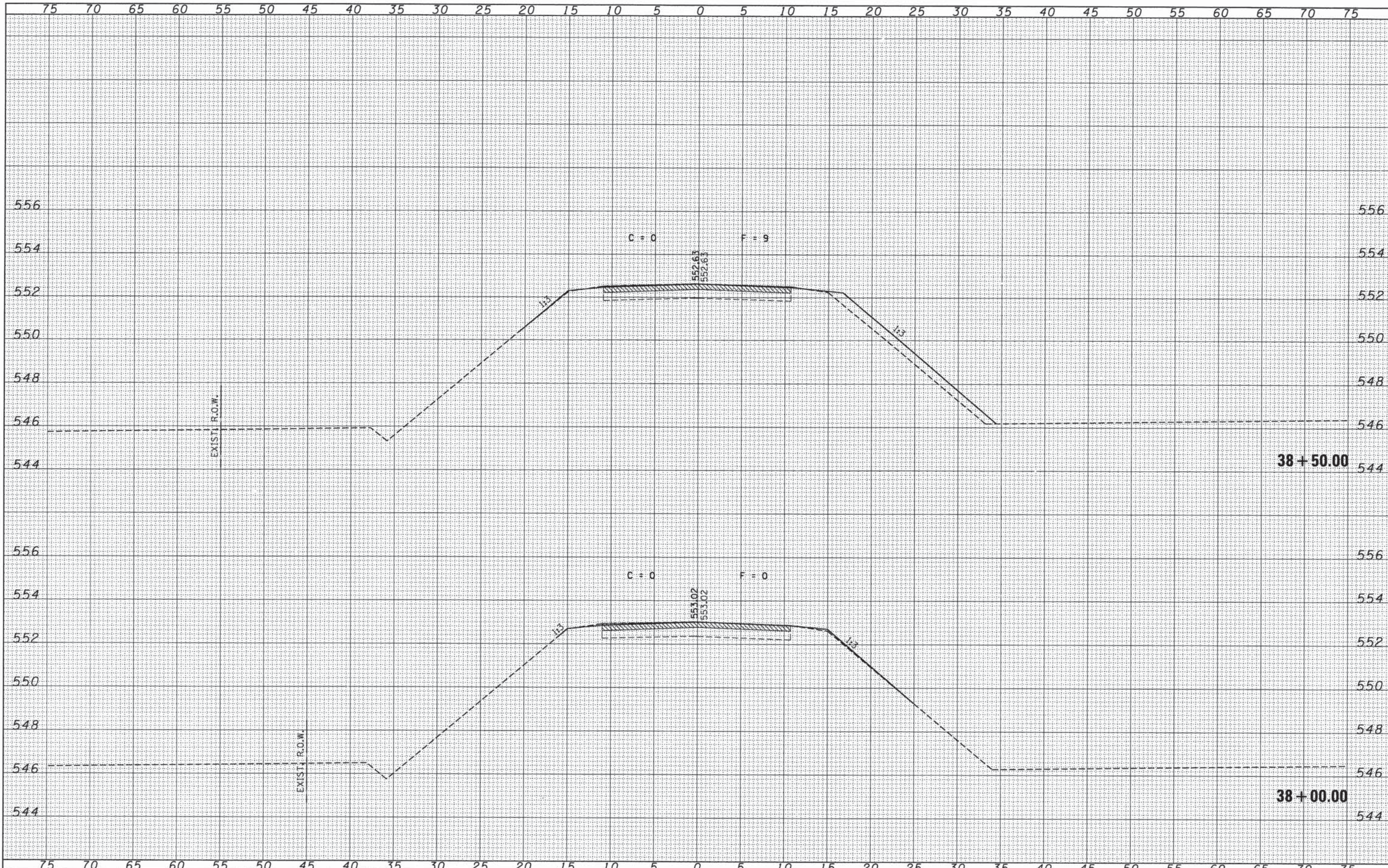
FILE NAME = 138257-sht-gr-detail.dgn	USER NAME =	DESIGNED - L.F.S.	REVISED -	<b>STATE OF ILLINOIS FAYETTE COUNTY HIGHWAY DEPARTMENT</b>	<b>GUARDRAIL DETAILS F.A.S. 651 / C.H. 14</b>	F.A.S.	SECTION	COUNTY	TOTAL SHEETS	SHEET NO.	
<b>HAMPTON, LENZINI AND RENWICK, INC.</b> 3085 STEVENSON DRIVE, SUITE 201 SPRINGFIELD, ILLINOIS 62763 ILLINOIS PROFESSIONAL DESIGN FIRM L.S. / P.E. / S.E. CORP. 184.000989	PLOT SCALE =	DRAWN - T.W.K.	REVISED -			651	10-00121-00-RS	FAYETTE	24	14	
PLOT DATE = 4/7/2014	DATE = 04/04/14	CHECKED - S.W.M.	REVISED -			CONTRACT NO. 95741					
						ILLINOIS FED. AID PROJECT					

41+40 F.E.  
16' EARTH

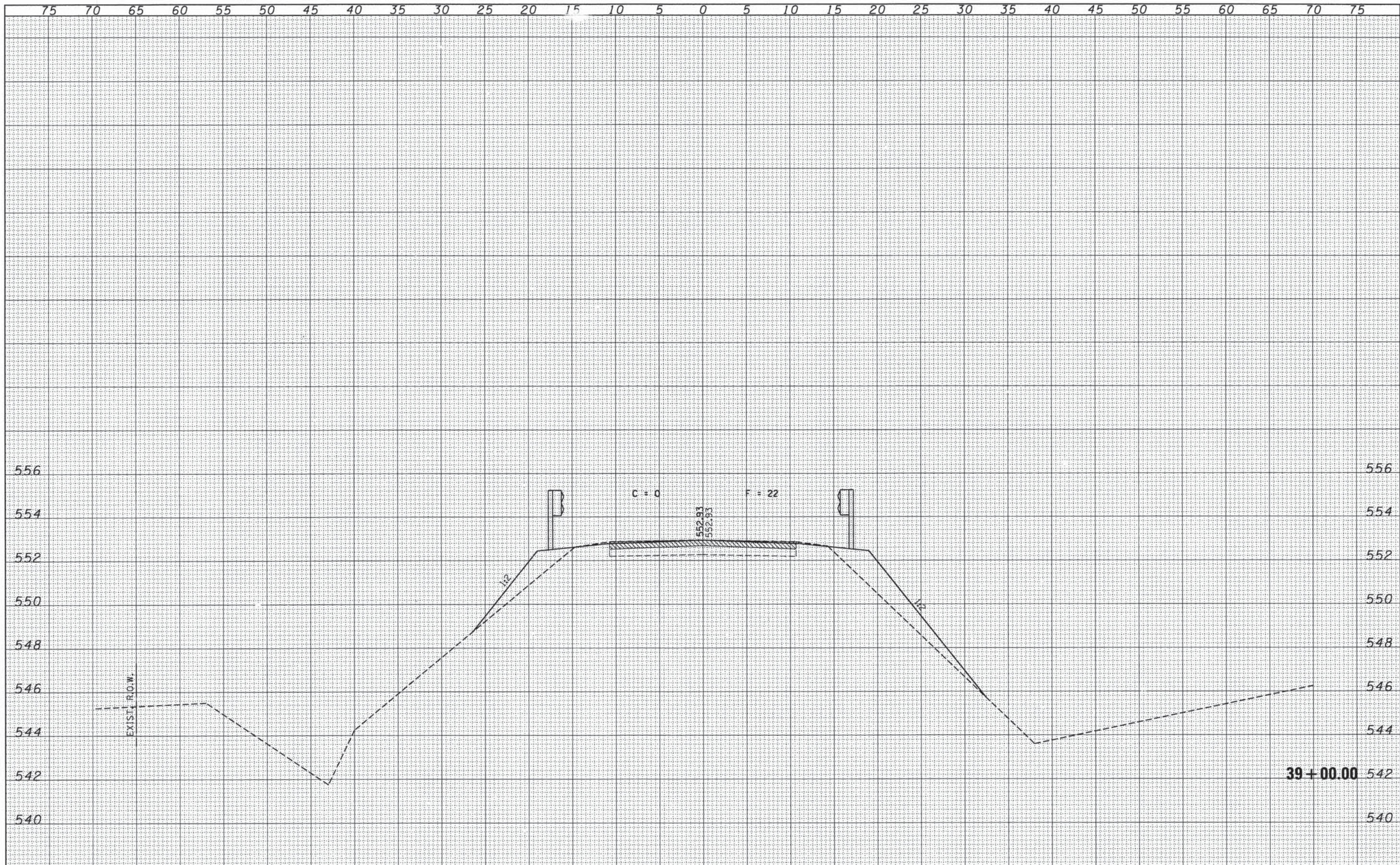
SCALE: 1:2 SHEET NO. OF SHEETS STA. TO STA.

DATE	
BY	
SURVEYED	
PLOTTED	
TEMPLATE	
AREAS CHECKED	
FINAL SURVEY	
NOTE BOOK	
NO.	

DATE	
BY	
SURVEYED	
PLOTTED	
TEMPLATE	
AREAS CHECKED	
ORIGINAL SURVEY	
NOTE BOOK	
NO.	



FILE NAME = 130257-sh1-axs-secRS.dgn	USER NAME =	DESIGNED - J.W.F.	REVISED -	<b>STATE OF ILLINOIS</b> <b>FAYETTE COUNTY HIGHWAY DEPARTMENT</b>	<b>STATION CROSS SECTIONS</b> <b>F.A.S. 651 / C.H. 14</b>		C.H.	SECTION	COUNTY	TOTAL SHEETS	SHEET NO.	
<b>HAMPTON, LENZINI AND RENWICK, INC.</b>		DRAWN - T.W.K.	REVISED -		14	10-00121-00-RS	FAYETTE	24	15	CONTRACT NO. 95741		
<b>ILLINOIS PROFESSIONAL DESIGN FIRM</b>	PLOT SCALE =	CHECKED - L.F.S.	REVISED -		SCALE: 5H:2V		SHEET NO. OF SHEETS		STA. 38+00.00 TO STA. 38+50.00		[ILLINOIS] FED. AID PROJECT	
1300 STEVENSON DRIVE, SUITE 301 SPRINGFIELD, ILLINOIS 62763 ILLINOIS PROFESSIONAL DESIGN FIRM L.S./P.E./S.E. CORP. 184-000893	PLOT DATE = 4/8/2014	DATE - 004/04/14	REVISED -									

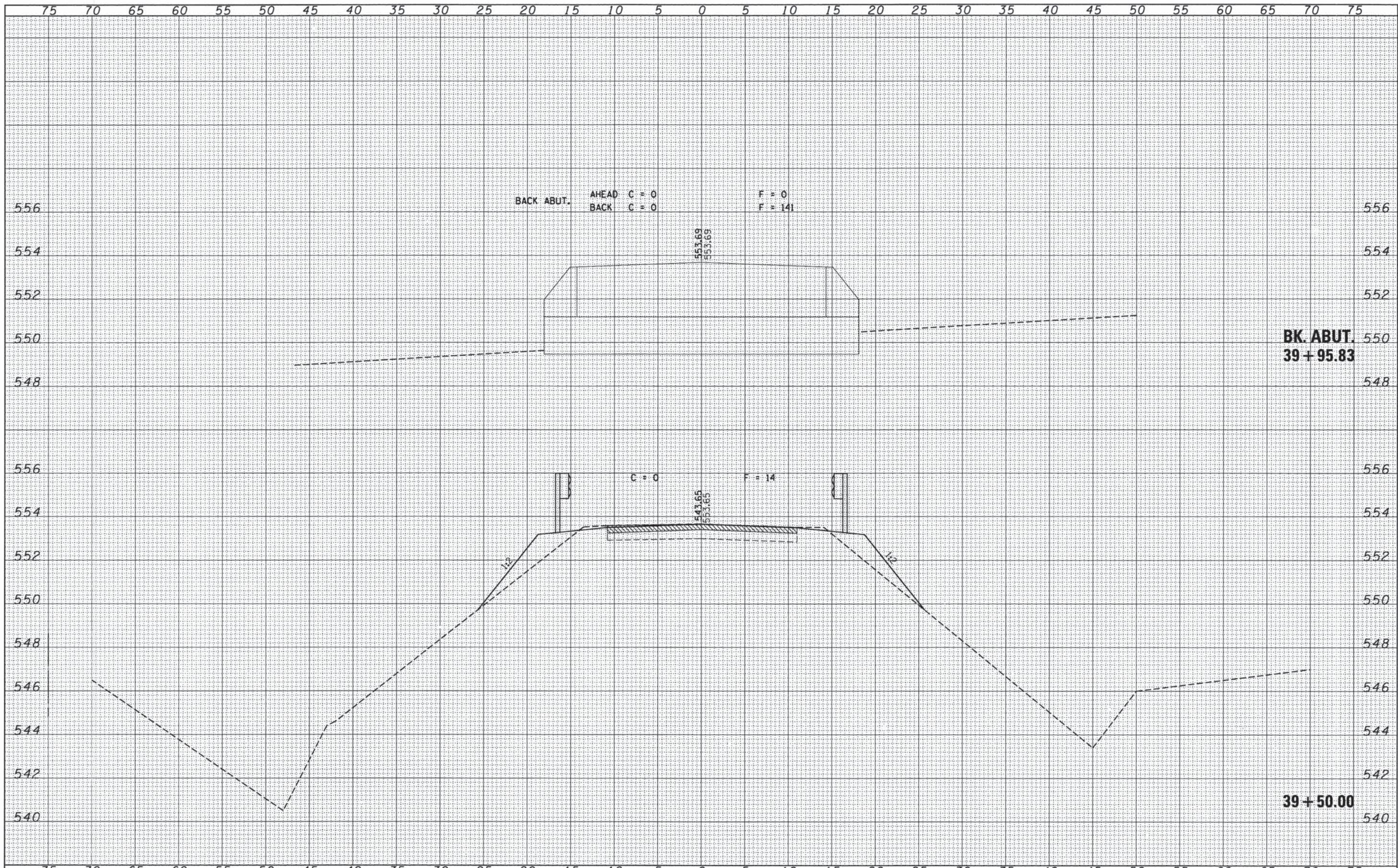


DATE	
BY	
FINAL SURVEY	
CHECKED	
PROF. PLOTTED	
TEMPLATE	
AREAS	
AREAS CHECKED	
NOTE BOOK	
NO.	

DATE	
BY	
ORIGINAL SURVEY	
CHECKED	
PROF. PLOTTED	
TEMPLATE	
AREAS	
AREAS CHECKED	
NOTE BOOK	
NO.	

FILE NAME = 138257-sht*sss-secRS.dgn	USER NAME =	DESIGNED - J.W.F.	REVISED -	<b>STATE OF ILLINOIS</b> <b>FAYETTE COUNTY HIGHWAY DEPARTMENT</b>	<b>STATION CROSS SECTIONS</b>				
<b>HAMPTON, LENZINI AND RENWICK, INC.</b>		DRAWN - T.W.K.	REVISED -		C.H.	SECTION	COUNTY	TOTAL SHEETS	SHEET NO.
1000 STEVENSON DRIVE, SUITE 201 SPRINGFIELD, ILLINOIS 62703	PLOT SCALE =	CHECKED - L.F.S.	REVISED -		14	10-00121-00-RS	FAYETTE	24	16
ILLINOIS PROFESSIONAL DESIGN FIRM LS / PE / SE CORP. 184-00089	PLOT DATE = 4/8/2014	DATE - 004/04/14	REVISED -		CONTRACT NO. 95741				
				SCALE: 5H:2V				SHEET NO. OF SHEETS STA. 39+00.00 TO STA. 39+00.00	
				ILLINOIS FED. AID PROJECT					





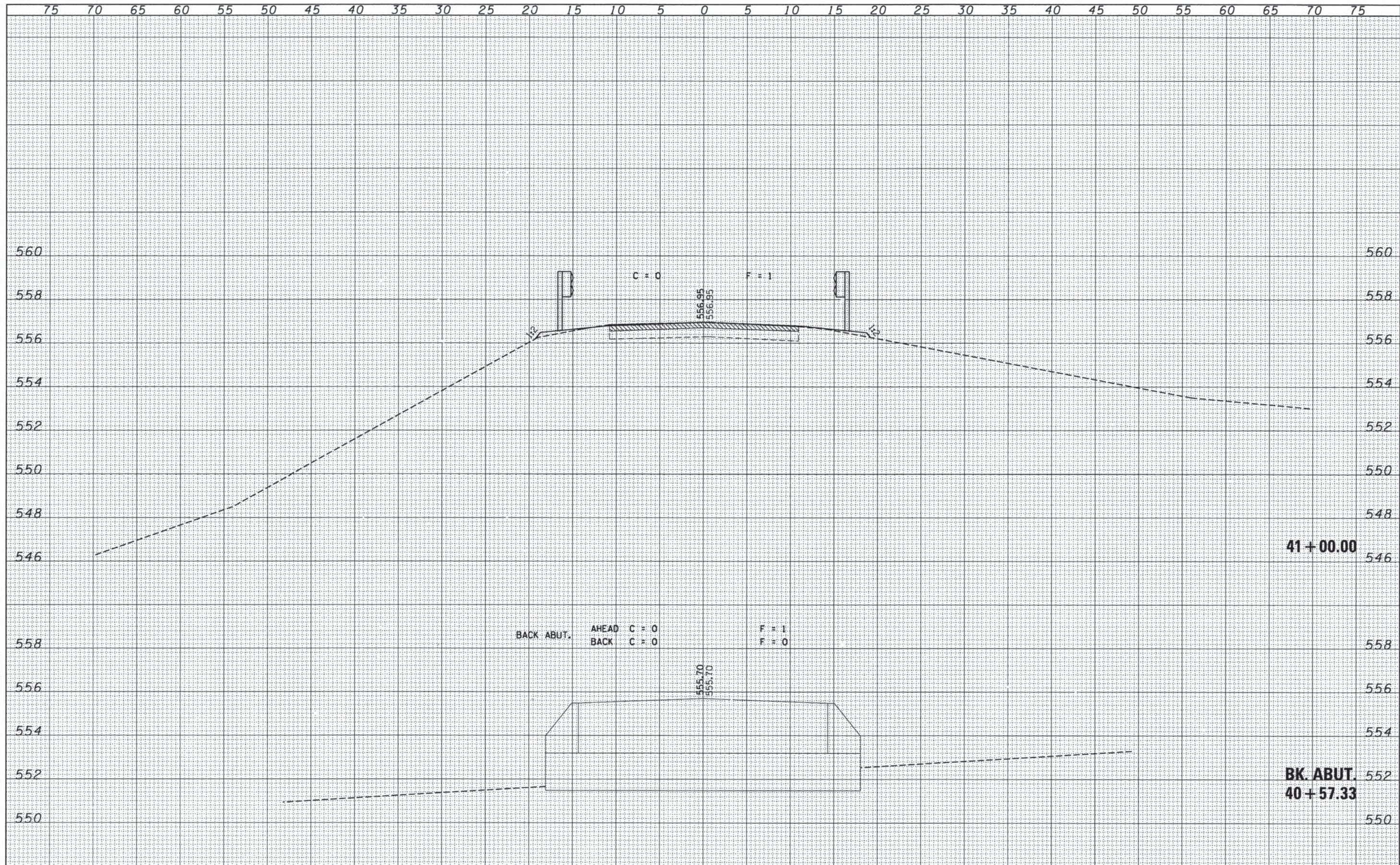
DATE	
BY	
FINAL SURVEY	
SURVEYED	
PLOTTED	
DATE	
AREAS CHECKED	
NO.	

DATE	
BY	
ORIGINAL SURVEY	
SURVEYED	
PLOTTED	
DATE	
AREAS CHECKED	
NO.	

FILE NAME = 130257-sht-axs-secRS.dgn	USER NAME =	DESIGNED - J.W.F.	REVISED -	<b>STATE OF ILLINOIS</b> <b>FAYETTE COUNTY HIGHWAY DEPARTMENT</b>	<b>STATION CROSS SECTIONS</b> <b>F.A.S. 651 / C.H. 14</b>		C.H.	SECTION	COUNTY	TOTAL SHEETS	SHEET NO.	
<b>HAMPTON, LENZINI AND RENWICK, INC.</b>		DRAWN - T.W.K.	REVISED -		14	10-00121-00-RS	FAYETTE	24	17	CONTRACT NO. 95741		
3008 STEVENSON DRIVE, SUITE 201 SPRINGFIELD, ILLINOIS 62703		CHECKED - L.F.S.	REVISED -		SCALE: 5H:2V	SHEET NO.	OF	SHEETS	STA. 39+50.00	TO STA. 39+97.00	ILLINOIS FED. AID PROJECT	
ILLINOIS PROFESSIONAL DESIGN FIRM L.S./P.E. / S.E. COMP. 184-00999		DATE - 004/04/14	REVISED -									

DATE	
BY	
SURVEYED	
TEMPLATE	
AREAS	
AREAS CHECKED	
NO.	

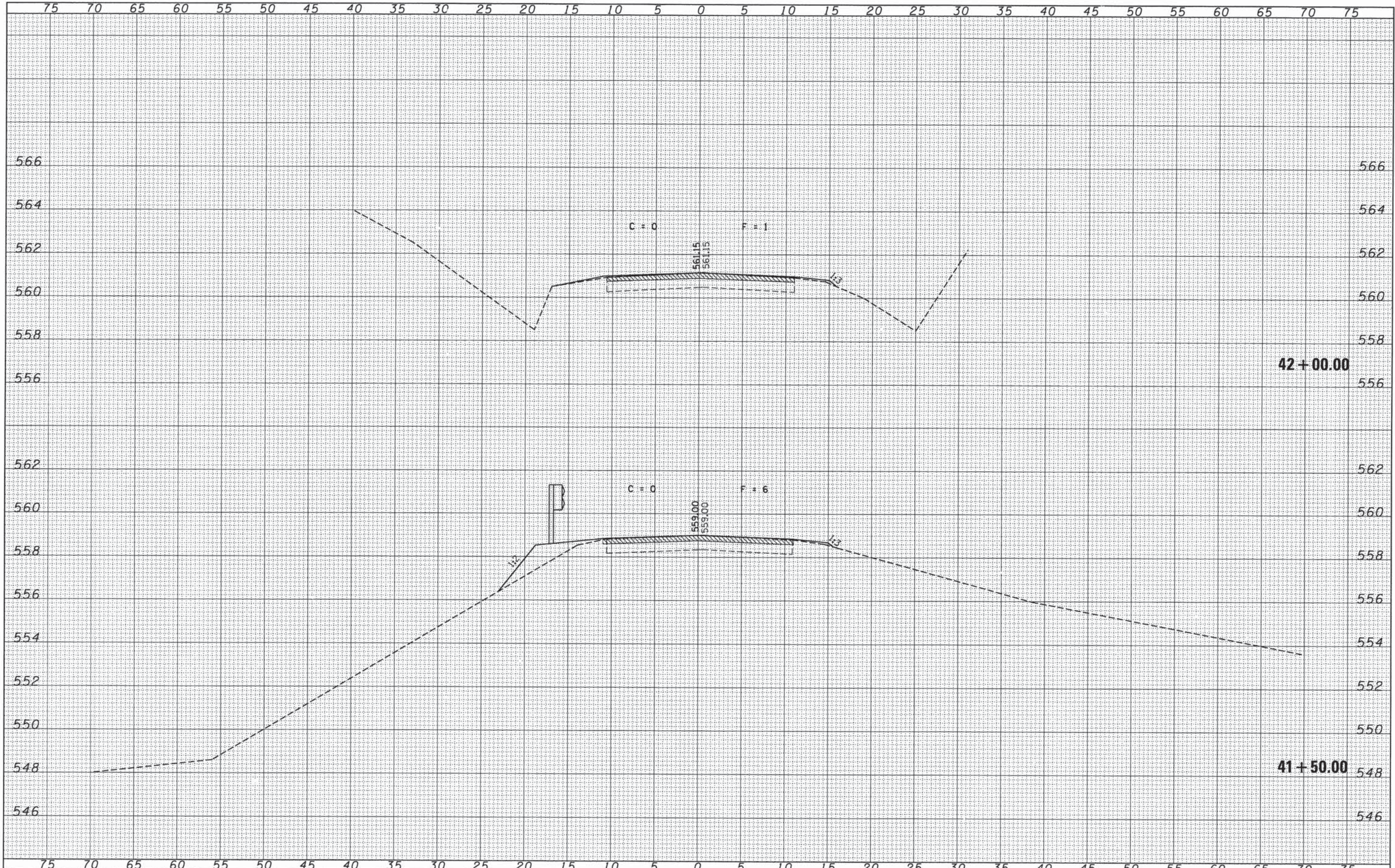
DATE	
BY	
ORIGINAL SURVEY	
NOTE BOOK	
AREAS CHECKED	
NO.	



FILE NAME = 130257-ah1-sxs-secrs.dgn	USER NAME =	DESIGNED - J.W.F.	REVISED -	<b>STATE OF ILLINOIS</b> <b>FAYETTE COUNTY HIGHWAY DEPARTMENT</b>	<b>STATION CROSS SECTIONS</b> <b>F.A.S. 651 / C.H. 14</b>		C.H.	SECTION	COUNTY	TOTAL SHEETS	SHEET NO.
HAMPTON, LENZINI AND RENWICK, INC.		DRAWN - T.W.K.	REVISED -		14	10-00121-00-RS	FAYETTE	24	18	CONTRACT NO. 95741	
550 STEVENSON DRIVE, SUITE 201		CHECKED - L.F.S.	REVISED -		SCALE: 5H:2V	SHEET NO.	OF SHEETS	STA. 40+57.00	TO STA. 41+00.00	[ILLINOIS] FED. AID PROJECT	
SPRINGFIELD, ILLINOIS 62783		DATE - 004/04/14	REVISFD -								

DATE	
BY	
FINAL SURVEY	
PLOTTED	
NOTE BOOK	
AREAS CHECKED	
NO.	

DATE	
BY	
ORIGINAL SURVEY	
PLOTTED	
NOTE BOOK	
AREAS CHECKED	
NO.	



FILE NAME = 130257-sht-axs-secRS.dgn	USER NAME =	DESIGNED - J.W.F.	REVISED -	<b>STATE OF ILLINOIS</b> <b>FAYETTE COUNTY HIGHWAY DEPARTMENT</b>	<b>STATION CROSS SECTIONS</b> <b>F.A.S. 651 / C.H. 14</b>		C.H.	SECTION	COUNTY	TOTAL SHEETS	SHEET NO.
<b>HAMPTON, LENZINI AND RENWICK, INC.</b> <small>505 STEVENSON DRIVE, SUITE 201          SPRINGFIELD, ILLINOIS 62703</small>		DRAWN - T.W.K.	REVISED -		14	10-00121-00-RS	FAYETTE	24	19	<b>CONTRACT NO. 95741</b>	
<b>ILLINOIS PROFESSIONAL DESIGN FIRM</b> <small>L.L. PEI &amp; ASSOCIATES, INC.</small>		CHECKED - L.F.S.	REVISED -		SCALE: 5H:2V	SHEET NO.	OF SHEETS	STA. 41+50.00	TO STA. 42+00.00	ILLINOIS FED. AID PROJECT	
PLOT DATE = 4/8/2014		DATE - 004/04/14	REVISED -								

EXISTING STRUCTURE: Structure NO. 026-3344; Built in 1984, 2 lane, single span bridge with 27" P.P.C.D.B. Superstructure on metal shell pile bent abutments. 61'-6" Bk.-Bk. abuts. and 28'-0" o.-o. deck.

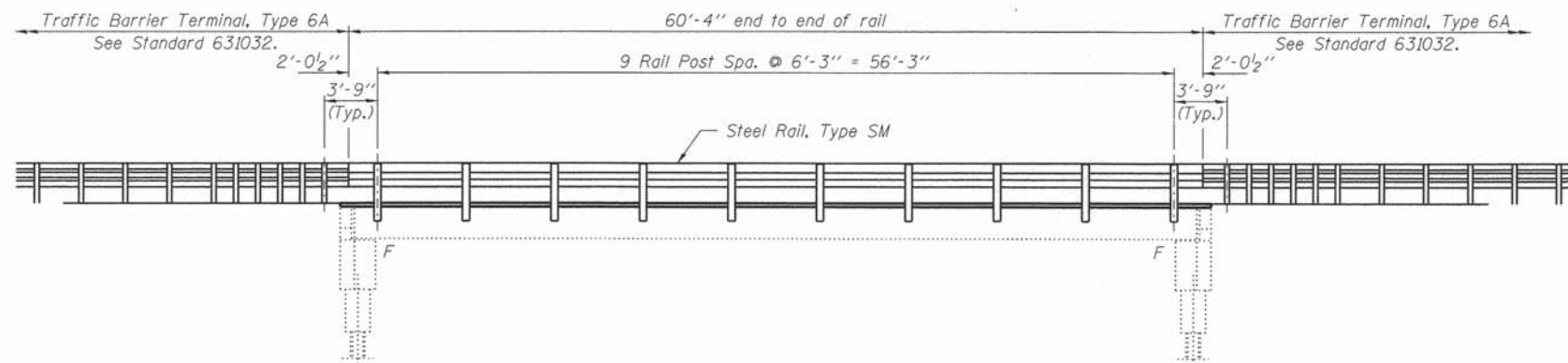
The road will be closed to traffic.

**GENERAL NOTES**

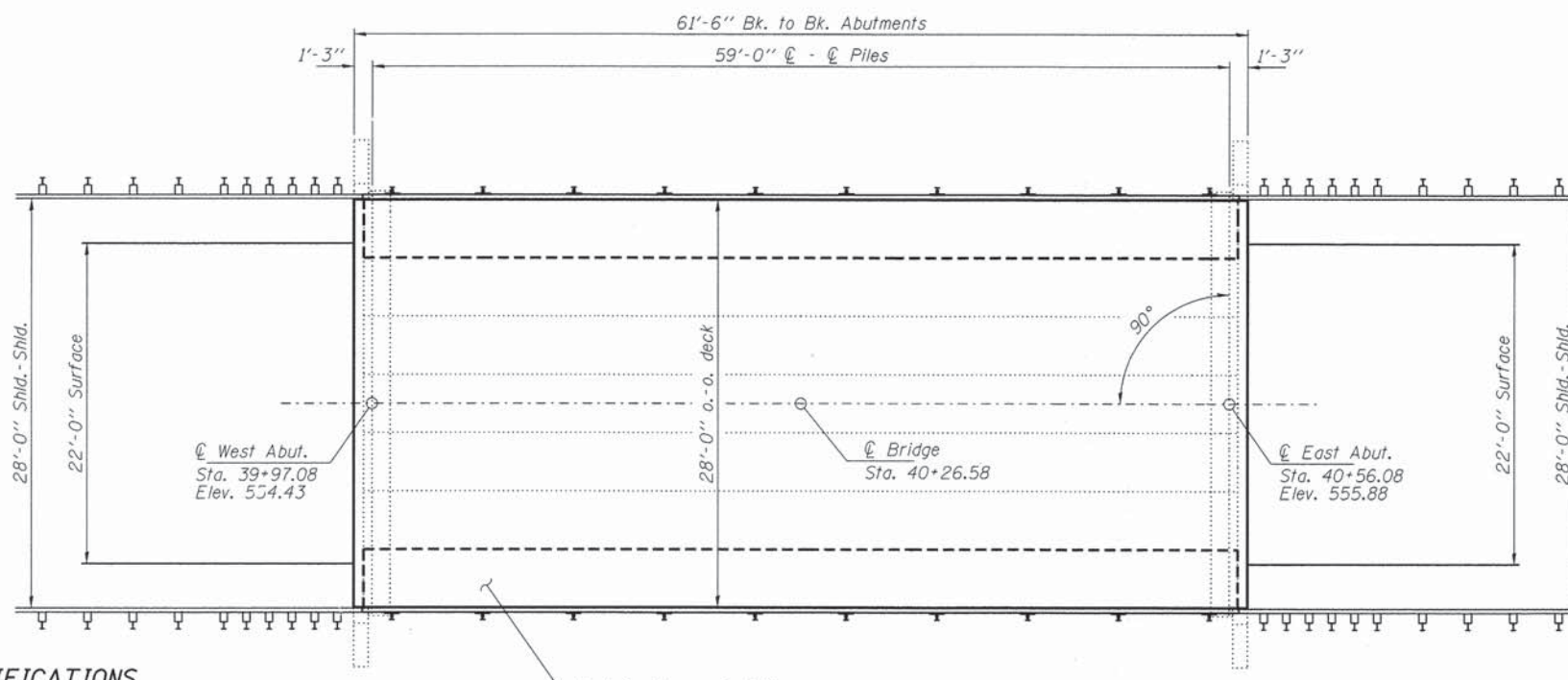
Plan dimensions and details relative to existing structure have been taken from existing plans and are subject to nominal construction variations. It shall be the Contractor's responsibility to verify such dimensions and details in the field and make necessary approved adjustments prior to construction or ordering of materials. Such variations shall not be cause for additional compensation for a change in the scope of the work, however, the Contractor will be paid for the quantity actually furnished at the unit price bid for the work.

The location and extent of repair items are based on visual observations made during field inspections and are not guaranteed to be accurate or all inclusive. The locations, extent of repair, and quality of repair shall be verified by the Engineer.

Delaminated areas in the surface of the PPC deck beams shall be repaired as per item Structural Repair of Concrete.



**ELEVATION**



**PLAN**

**PROPOSED DESIGN SPECIFICATIONS**

2012 AASHTO LRFD Bridge Design Specifications, 6th Edition with all applicable interims.

**LOADING HL-93**

Allow 50#/sq. ft. for future wearing surface.

**DESIGN STRESSES**

**FIELD UNITS**

$f'_c = 3,500$  psi  
 $f_y = 60,000$  psi (Reinf.)

**PRECAST PRESTRESSED UNITS**

$f'_c = 6,000$  psi  
 $f'_{ci} = 5,000$  psi  
 $f_{pu} = 270,000$  psi ( $\frac{1}{2}$ " low lax. strands)  
 $f_{pbt} = 201,960$  psi ( $\frac{1}{2}$ " low lax. strands)  
 $f_y = 60,000$  psi (Reinf.)

**EXISTING DESIGN SPECIFICATIONS**

1977 AASHTO LFD Design Edition 1980 interims.

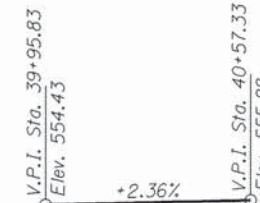
**LOADING HS 20-44**

I certify that to the best of my knowledge, information and belief, this beam replacement design is structurally adequate for the design loading shown on the plans. The design is an economical one for the style of structure and complies with requirements of the current "AASHTO LRFD Specifications."

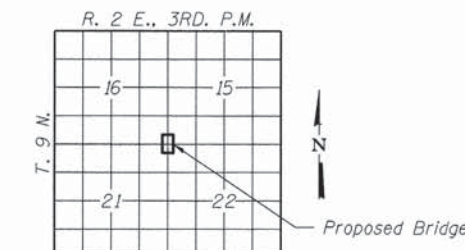
*Steven W. Megginson* 04/02/2014  
ILLINOIS STRUCTURAL ENGINEER NO. 081-6064



Expires 11-30-2014



**PROFILE GRADE**



**LOCATION SKETCH**

**INDEX OF STRUCTURE SHEETS**

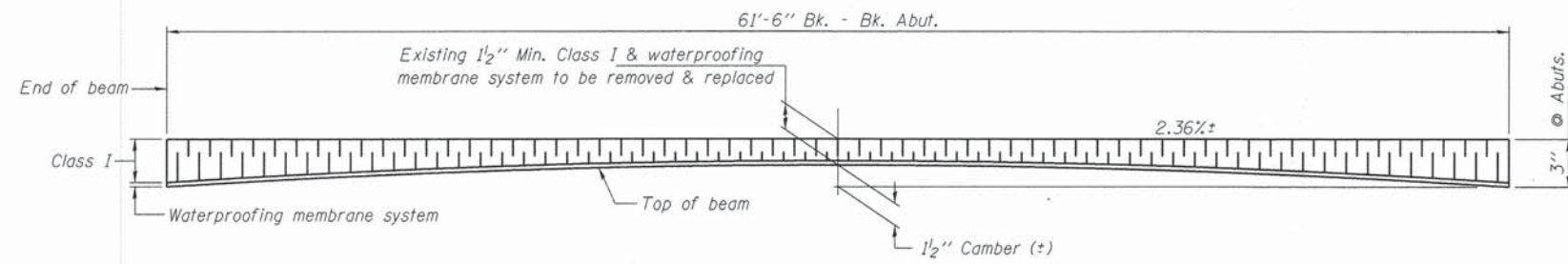
1. General Plan & Elevation
2. Superstructure Details
3. 27"x48" PPC Deck Beams
4. 27"x48" PPC Deck Beam Details
5. Steel Railing, Type SM

**TOTAL BILL OF MATERIAL**

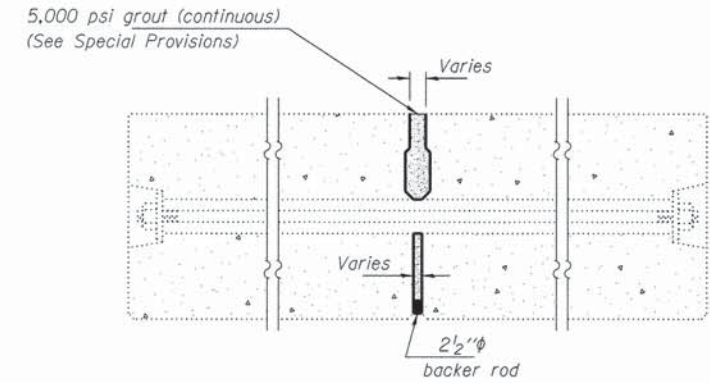
ITEM	UNIT	SUPER	SUB	TOTAL
HMA Surface Removal Deck	Sq. Yd.	191		191
Hot Mix Asphalt Surface Course, Mix C, N50	Ton	21		21
Precast Prestressed Concrete Deck Beams (27" Depth)	Sq. Ft.	481		481
Waterproofing Membrane System	Sq. Yd.	191		191
Keyway Repair	Foot	361		361
Structural Repair of Concrete (Depth Equal to or Less Than 5")	Sq. Ft.		50	50
Removal of Existing PPC Deck Beams	Sq. Ft.	481		481
Steel Railing, Type SM	Foot	121		121

**GENERAL PLAN & ELEVATION**  
**C.H. 14 / FAS 651**  
**OVER SECTION CREEK**  
**SECTION 10-00121-00-RS**  
**FAYETTE COUNTY**  
**STATION 40+26.58**  
**STRUCTURE NO. 026-3344**

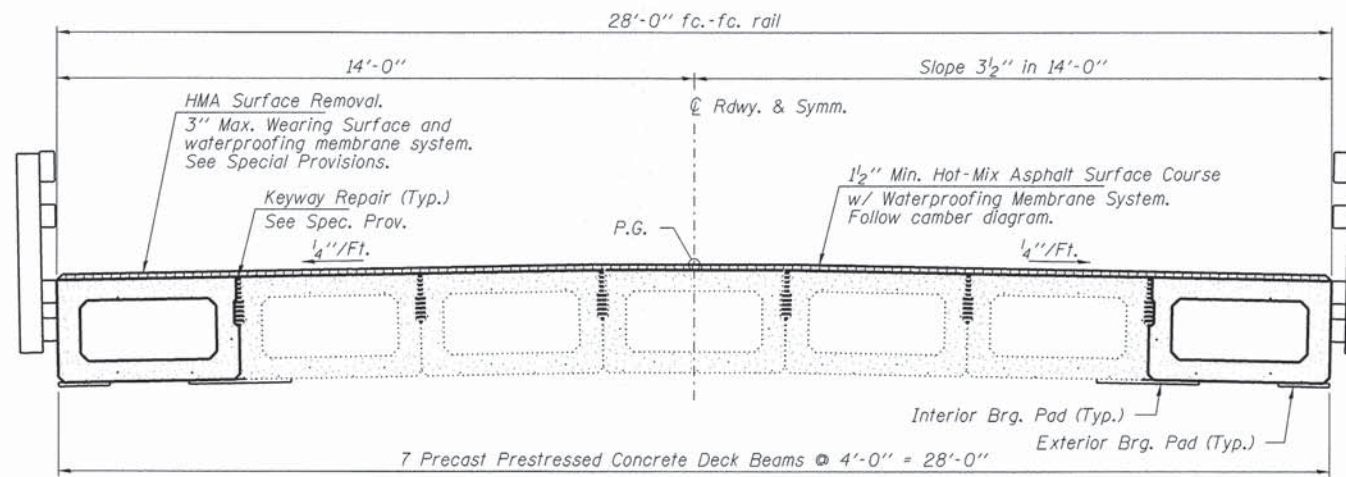
FILE NAME = 138257-sht-bridge-026-3344.dwg	DRAWN - R.D.H.	DESIGNED - L.A.P.	CHECKED - S.W.M.	REVISIONS	STATE OF ILLINOIS FAYETTE COUNTY HIGHWAY DEPARTMENT	GENERAL PLAN & ELEVATION STRUCTURE NO. 026-3344	SHEET NO. 1 OF 5 SHEETS	C.H.	SECTION	COUNTY	TOTAL SHEETS	SHEET NO.
HAMPTON, LENZINI AND RENWICK, INC. 3500 STEVENSON DRIVE, SUITE 201 SPRINGFIELD, ILLINOIS 62703 ILLINOIS PROFESSIONAL DESIGN FIRM LS / PE / SE CORP. 184.000950	PLOT SCALE =	CHECKED - S.W.M.	REVISIONS	14				10-00121-00-RS	FAYETTE	24	20	
	PLOT DATE = 4/7/2014							CONTRACT NO. 95741				



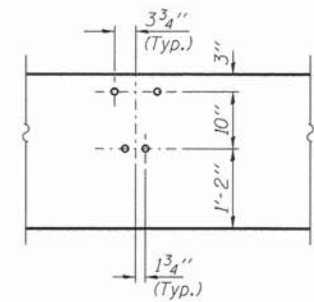
**CAMBER DIAGRAM**



**LONGITUDINAL KEYWAY REPAIR DETAIL**

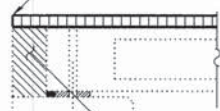


**PROPOSED BRIDGE CROSS SECTION**  
(Looking East)



**RAIL INSERT**

1/4" x 3/4" Bridge Relief Joint Sealer (Full Width) See Special Provisions.



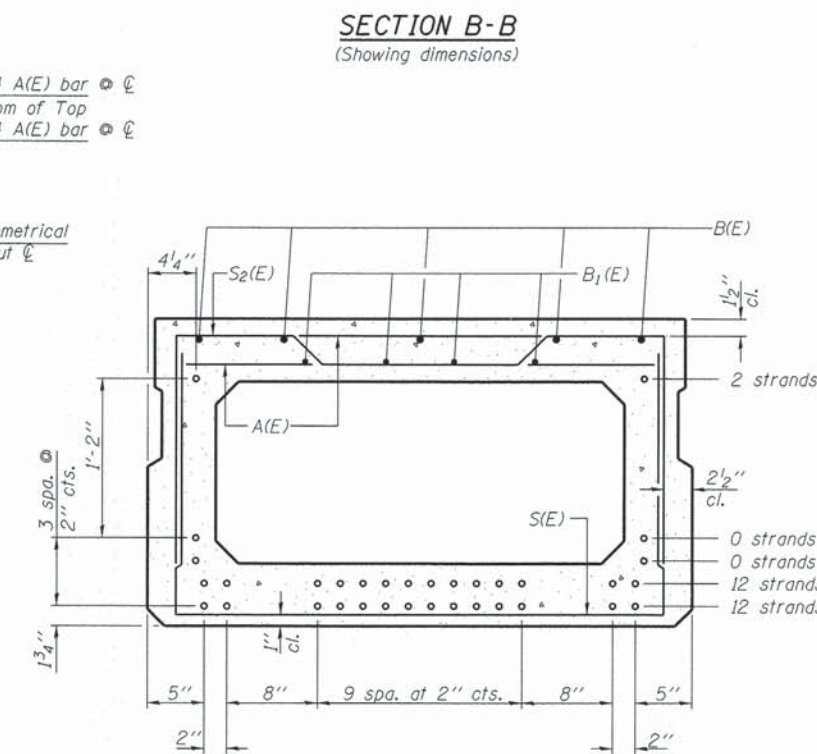
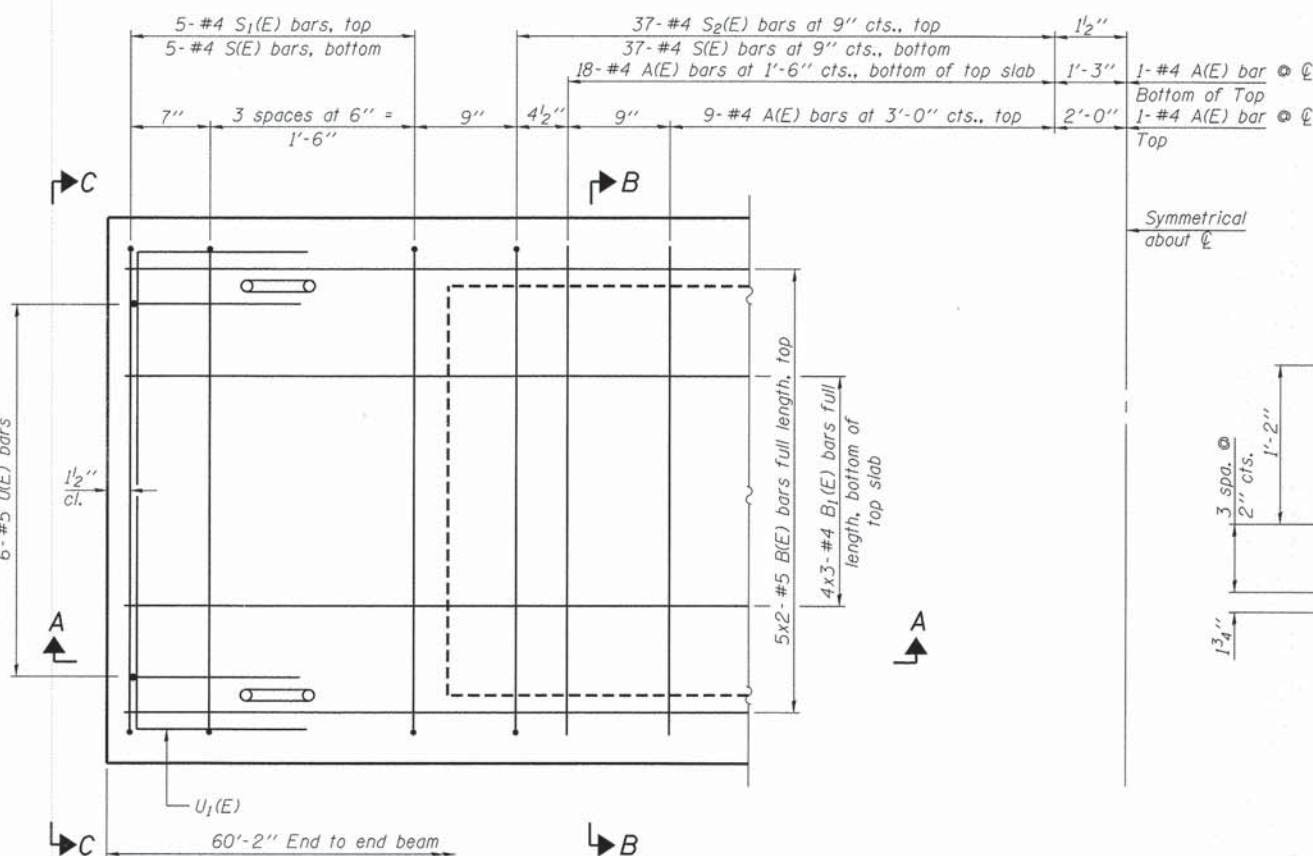
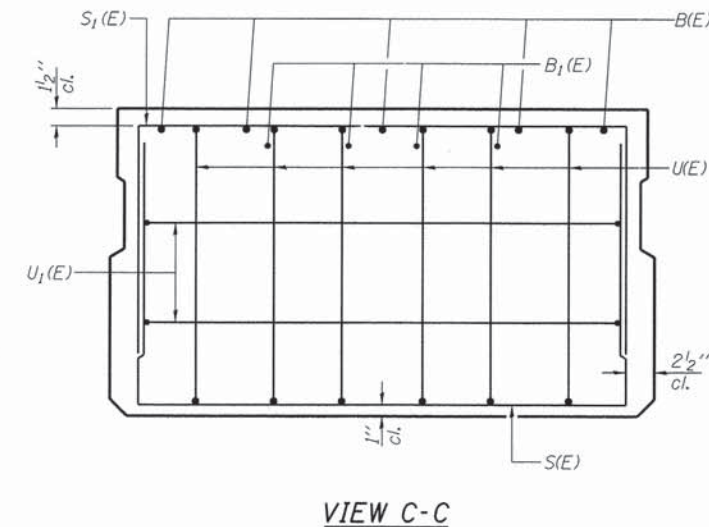
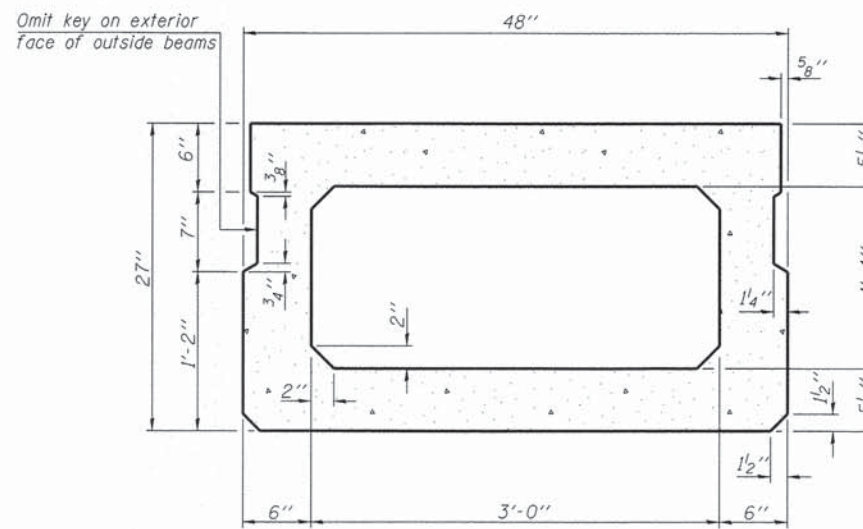
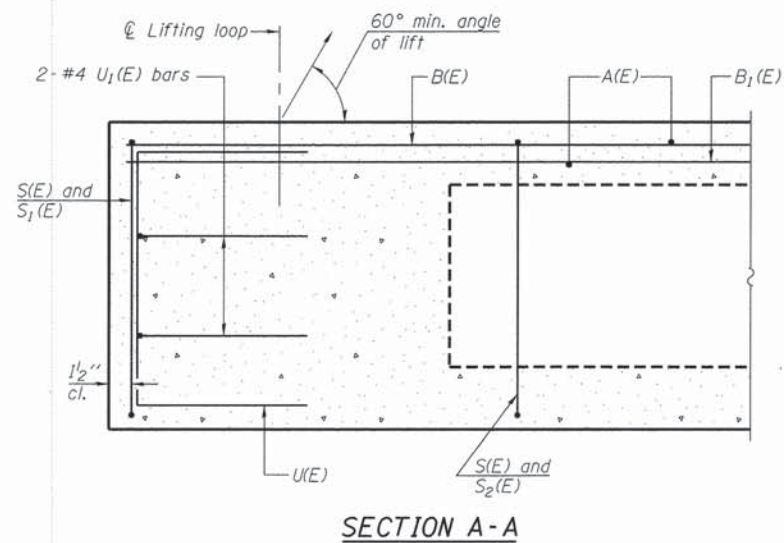
Contractor shall repair damaged or replace concrete backwall and wing. Cost included with PPC Deck Beams.

**SECTION AT ABUTMENTS**

© Rt. L's

**BILL OF MATERIAL**

HMA Surface Removal Deck	Sq. Yd.	191
Hot-Mix Asphalt Surface Course, Mix C, N50	Tons	21
Waterproofing Membrane System	Sq. Yd.	191
Keyway Repair	Foot	361
Structural Repair of Concrete (Depth Equal to or Less Than 5")	Sq. Ft.	50



**SECTION B-B**  
(Showing reinforcement and permissible strand locations)  
Note: Place the number of strands specified in each row symmetrically about the centerline of beam in the permissible strand locations shown.

**BAR LIST**  
**ONE BEAM ONLY**

(For information only)

Bar	No.	Size	Length	Shape
A(E)	56	#4	3'-7"	—
B(E)	10	#5	31'-3"	—
B1(E)	12	#4	21'-4"	—
S(E)	84	#4	7'-5"	U
S1(E)	10	#4	6'-11"	U
S2(E)	74	#4	7'-2"	U
U(E)	12	#5	4'-6"	U
U1(E)	4	#4	6'-0"	U

Note: See sheet 4 of 5 for additional details and Bill of Material.

Notes:  
Spacing of S(E) and S2(E) bars may be adjusted up to 4" in the immediate area of the transverse tie diaphragms to miss the block outs for the transverse ties.  
Bars indicated thus 4x3-#4 etc. indicates 4 lines of bars with 3 lengths per line.

**MINIMUM BAR LAP**  
#4 bar = 2'-0"  
#5 bar = 2'-6"

PD-2748-0

7-1-10

FILE NAME = 138257-shr-bridge-026-3344.dwg	DESIGNED - L.A.P.	REVISIONS -
HAMPTON, LENZINI AND RENWICK, INC. 3088 STEVENSON DRIVE, SUITE 201 SPRINGFIELD, ILLINOIS 62703	CHECKED - S.W.M.	REVISIONS -
ILLINOIS PROFESSIONAL DESIGN FIRM L8 / PE / SE CORP. 184.000889	DRAWN - R.D.H.	REVISIONS -
PLOT SCALE =	CHECKED - S.W.M.	REVISIONS -
PLOT DATE = 4/7/2014		

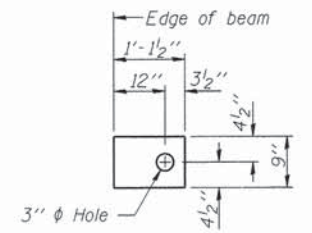
**STATE OF ILLINOIS**  
**FAYETTE COUNTY HIGHWAY DEPARTMENT**

**27" x 48" PPC DECK BEAM**  
**STRUCTURE NO. 026-3344**

SHEET NO. 3 OF 5 SHEETS

C.J.H.	SECTION	COUNTY	TOTAL SHEETS	SHEET NO.
14	10-00121-00-RS	FAYETTE	24	22
			CONTRACT NO. 9574i	

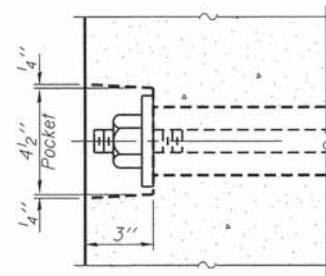
[ILLINOIS] FED. AID PROJECT



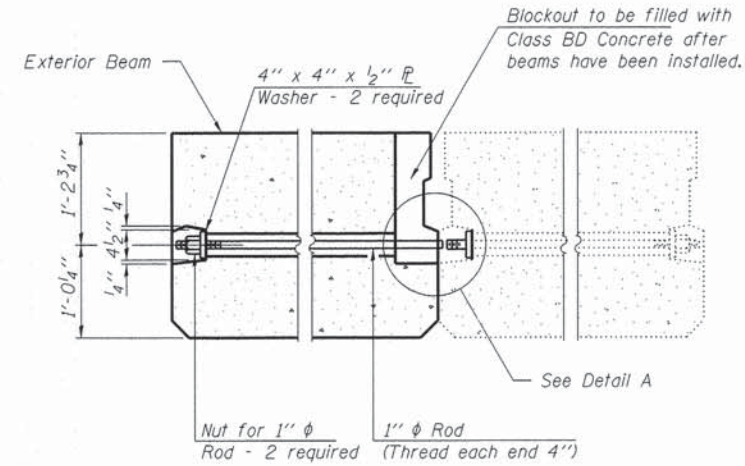
**FABRIC BEARING PAD**  
(Exterior - 8 req'd)

**FIXED**

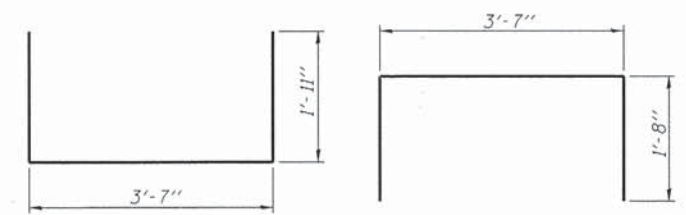
Notes:  
All bearing pads shall be 1" thick.  
Omit holes when using expansion bearings.  
Expansion bearing pad shall be bonded to the substructure.



**SECTION A-A**

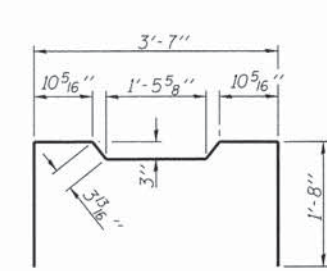


**TRANSVERSE TIE ASSEMBLY**  
Cost included with PPC Deck Beams

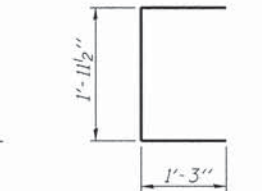


**BAR S(E)**

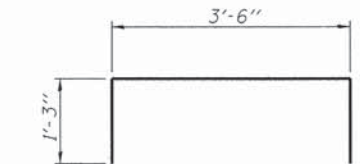
**BAR S1(E)**



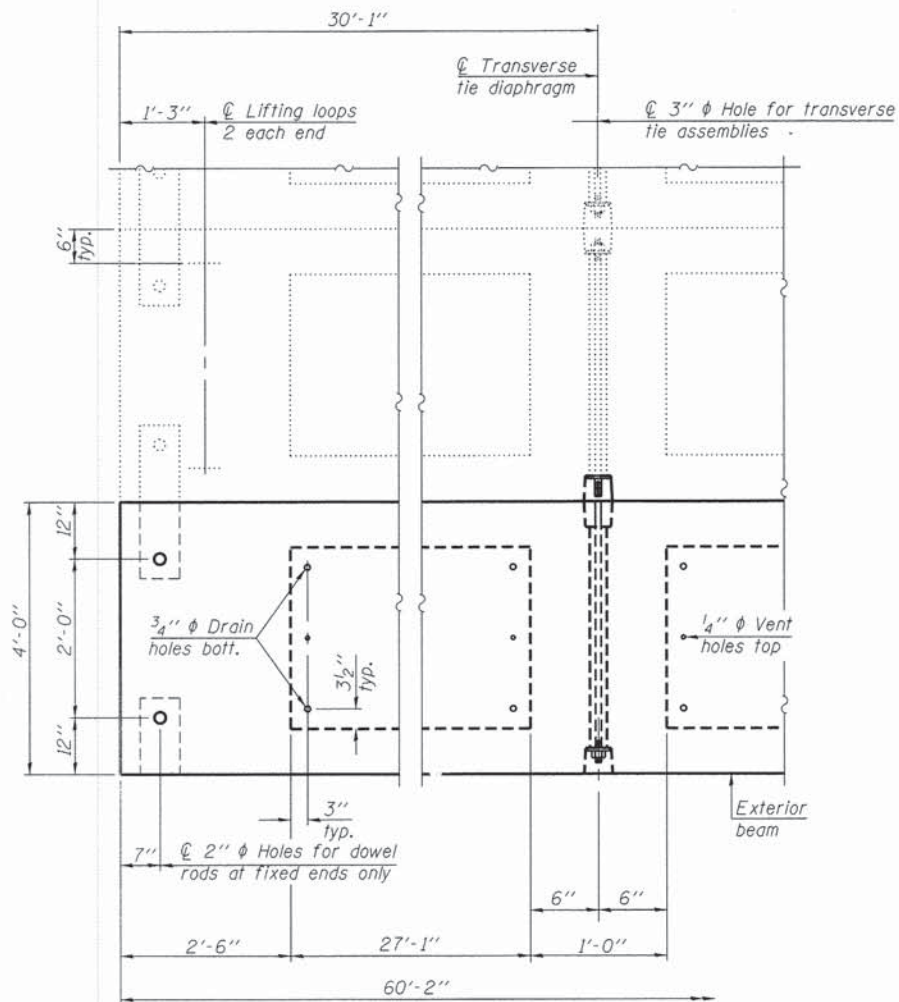
**BAR S2(E)**



**BAR U(E)**

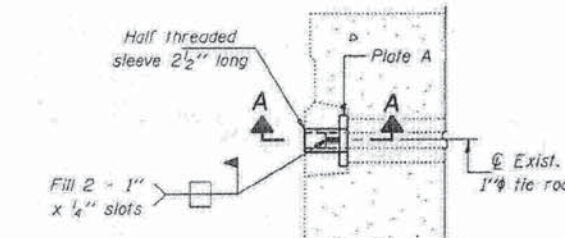


**BAR U1(E)**

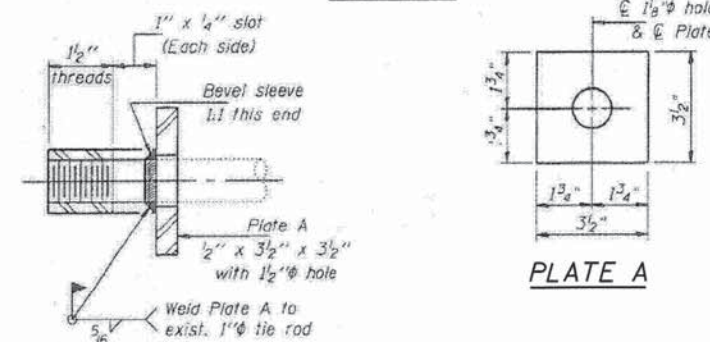


**PLAN VIEW**

Note: Connect beams in pairs with the transverse tie configuration shown.



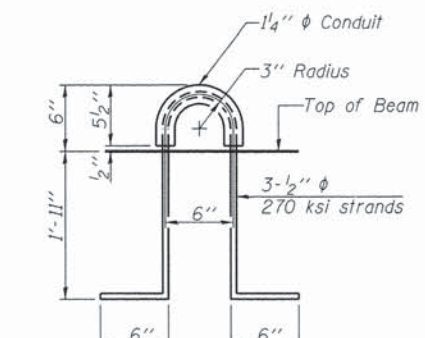
**DETAIL A**



**SECTION A-A**  
(2 req'd)

**TRANSVERSE TIE COUPLER**

The cost of fabricating and installing the Transverse Tie Coupler shall be included in the item Precast Prestressed Concrete Deck Beams.



**LIFTING LOOP DETAIL**

**NOTES**

- Prestressing steel shall be uncoated high strength, low relaxation 7-wire strand, Grade 270. The nominal diameter shall be 1/2" and the nominal cross-sectional area shall be 0.153 sq. in.
- The 1" diameter rods in the transverse tie assembly shall be tightened to a snug fit and the threads set. Pockets on exterior faces of bridge shall be filled with grout after transverse tie assembly is in place.
- Reinforcement bars shall conform to ASTM A 706, Grade 60. (See Special Provisions).
- Two 1/8" fabric adjusting shims of the dimensions of the exterior bearing pad shall be provided for each bearing pad location.
- A minimum 2 1/2" diameter lifting pin shall be used to engage the lifting loops during handling.
- Corrosion Inhibitor, per Article 1020.05(b)(12) and 1021.07 of the Standard Specifications, shall be used in the concrete for precast prestressed concrete deck beams.
- Compressive strength of prestressed concrete, f'c, shall be 6000 psi.
- Compressive strength of prestressed concrete at release, f'ci, shall be 5000 psi.
- Reinforcement bars designated (E) shall be epoxy coated.

**BILL OF MATERIAL**

Precast Prestressed Conc. Deck Bms. (27" depth)	Sq. Ft.	481
---	---------	-----

PD-2748-OD 7-1-10

FILE NAME = 138257-shr-bridge-026-3344	DESIGNED - L.A.P.	REVISED -
HAMPTON, LENZINI AND RENWICK, INC.	CHECKED - S.W.M.	REVISED -
3608 STEVENSON DRIVE, SUITE 201	DRAWN - R.D.H.	REVISED -
SPRINGFIELD, ILLINOIS 62703	CHECKED - S.W.M.	REVISED -
ILLINOIS PROFESSIONAL DESIGN FIRM		
LR / PE / SE / COPIP 184.002989		

**STATE OF ILLINOIS**  
**FAYETTE COUNTY HIGHWAY DEPARTMENT**

**27" x 48" PPC DECK BEAM DETAILS**  
**STRUCTURE NO. 026-3344**

SHEET NO. 4 OF 5 SHEETS

C.H.	SECTION	COUNTY	TOTAL SHEETS	SHEET NO.
14	10-00121-00-RS	FAYETTE	24	23
CONTRACT NO. 95741			ILLINOIS FED. AID PROJECT	

