

INDEX OF SHEETS

- SHEET 1. COVER SHEET
- SHEET 2. TYPICAL CROSS SECTION, SUMMARY OF QUANTITIES, STRUCTURAL DESIGN, BITUMINOUS MIXTURE TABLE
- SHEET 3. TYPICAL ENTRANCE DETAIL, MAILBOX DETAILS, SIDE ROAD RETURN, GENERAL NOTES

STANDARDS

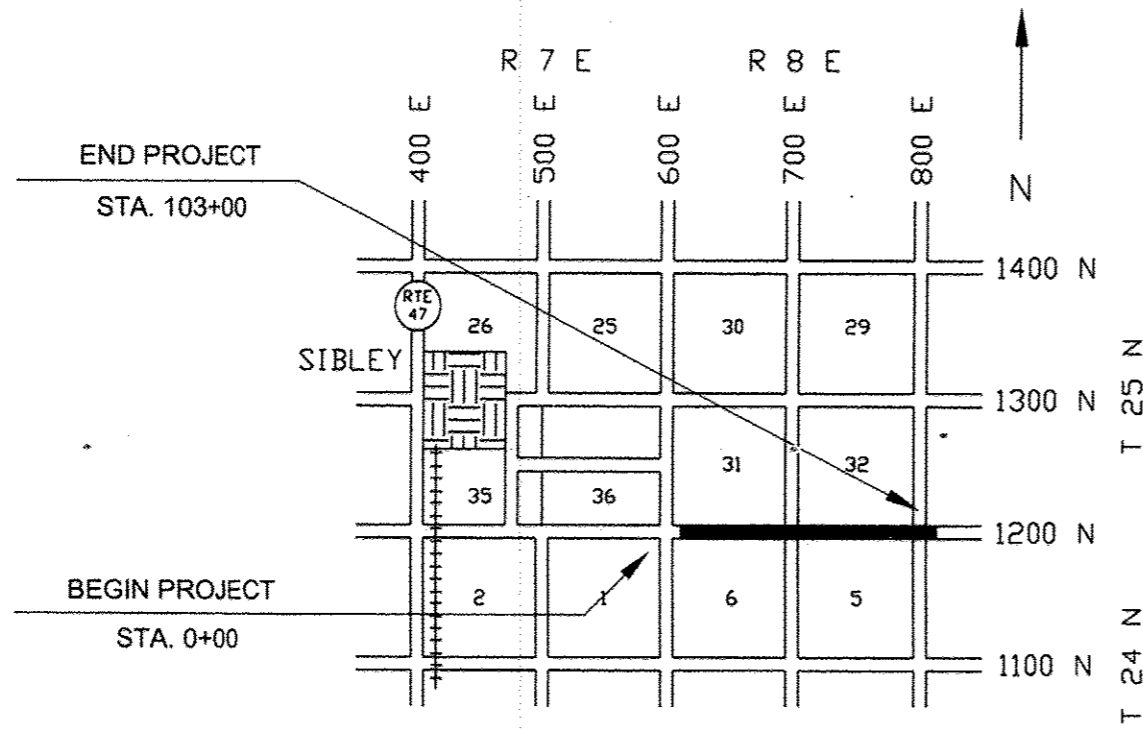
- 701301-04 LANE CLOSURE 2 LANE, 2 WAY, SHORT TIME OPERATIONS
- 701306-03 LANE CLOSURE 2 LANE, 2 WAY, SLOW MOVING OPERATIONS - DAY ONLY FOR SPEEDS ≥ 45 MPH
- 701311-03 LANE CLOSURE 2 LANE, 2 WAY, MOVING OPERATIONS - DAY ONLY
- 701901-03 TRAFFIC CONTROL DEVICES
- 780001-04 TYPICAL PAVEMENT MARKINGS

STATE OF ILLINOIS
DEPARTMENT OF TRANSPORTATION
DIVISION OF HIGHWAYS

**PLANS FOR
PROPOSED LOCAL AGENCY IMPROVEMENT
FEDERAL-AID SECONDARY PROJECT**

C.H. 3 (MELVIN - SIBLEY ROAD)
F.A.S. ROUTE 341 SECTION 15-00120-00-RS FORD COUNTY
PROJECT RS- 0341(112)
JOB NO. C-93-068-13

FAS NO	SECTION	COUNTY	TOTAL SHEETS	SHEET NO.
341	15-00120-00-RS		3	1
PROJECT RS - 0341(112) CONTRACT # 87564				



NOT TO SCALE

GROSS LENGTH = 10300' = 1.951 MI.

NET LENGTH = 10300' = 1.951 MI.

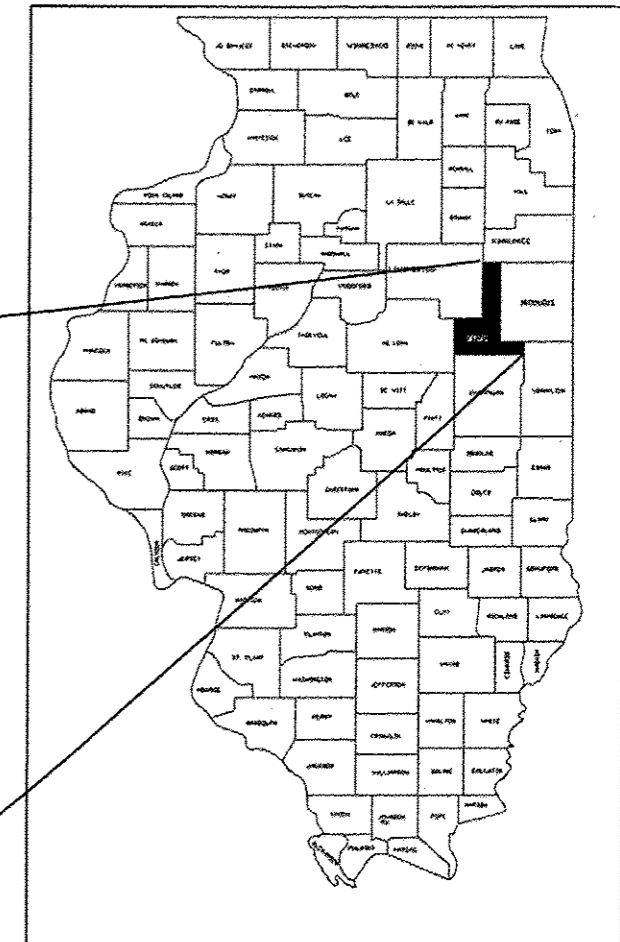
PREVIOUS CONSTRUCTION BY SECTION NUMBERS
16Q-2 AND 87-00056-00-WR

FUNCTIONAL CLASSIFICATION: MAJOR COLLECTOR

Gregory L. Perkinson
ILLINOIS PROFESSIONAL NO. 062-035801

EXPIRES 11-30-2015

CURRENT (2014) ADT = 300 - 88% PC
9% SU
3% MU
DESIGN ADT (2024) = 350
DESIGN SPEED = 50 MPH



THE ACCEPTANCE OF THIS PROJECT IS BASED ON THE MINIMUM DESIGN CRITERIA UNDER 3R GUIDELINES.

APPROVED	MARCH 24, 2014 <i>Gregory L. Perkinson</i> FORD COUNTY, COUNTY ENGINEER
PASSED	4/7/2014 <i>David R. E. O.</i> DISTRICT 3 ENGINEER OF LOCAL ROADS & STREETS
Releasing for Bid Based on Limited Review	4/7/2014 <i>Paul A. Lutz</i> DEPUTY DIRECTOR OF HIGHWAYS, REGION 2 ENGINEER STATE OF ILLINOIS DEPARTMENT OF TRANSPORTATION

UTILITIES

UTILITIES ON THIS SECTION AT VARIOUS LOCATIONS INCLUDES TO THE BEST OF OUR KNOWLEDGE:

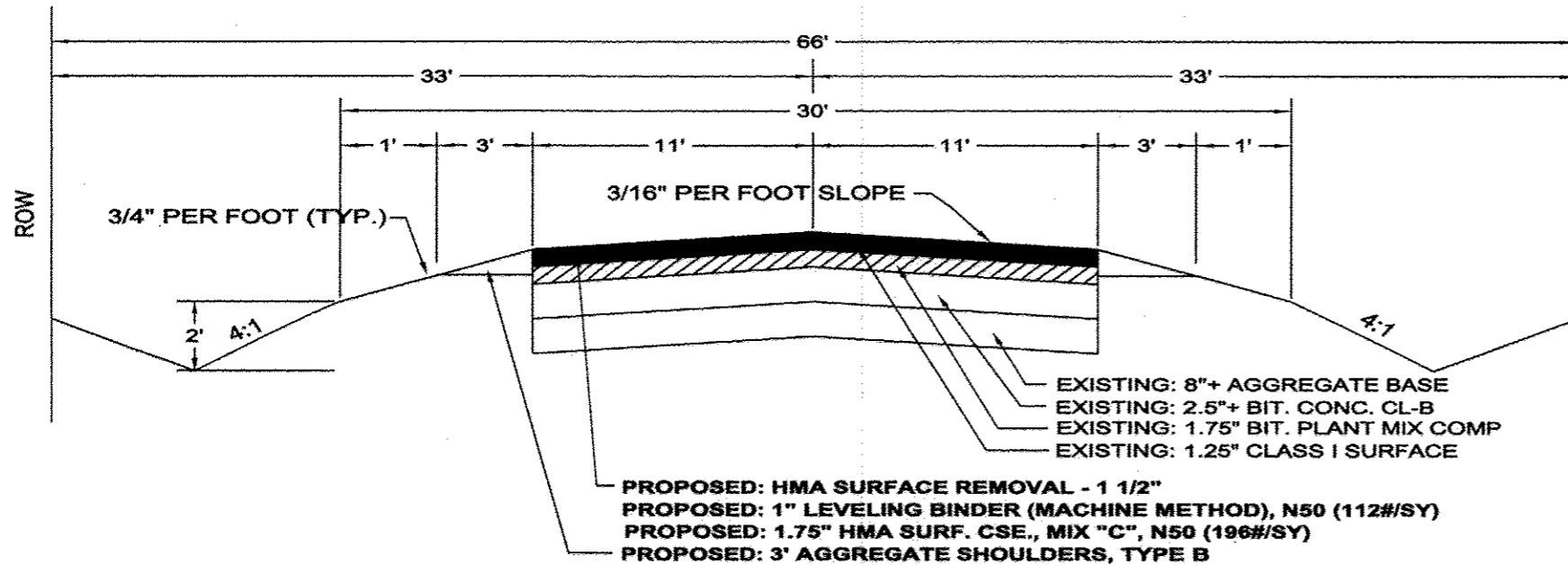
FRONTIER TELEPHONE COMPANY (UNDERGROUND)
OVERHEAD POWER - EASTERN ILLINI
PIPELINES: PEOPLES GAS, MOBILE PETROLEUM, MID-AMERICA NGL

CONTRACTORS OR SUBCONTRACTORS SHALL CONTACT J.U.L.I.E. (1-800-892-0123) AT LEAST 72 HOURS PRIOR TO ANY EXCAVATION FOR UTILITIES LOCATION

JOB NO. C-93-068-13
CONTRACT NO. 87564

TYPICAL CROSS SECTION
SECTION 15-00120-00-RS (MELVIN- SIBLEY ROAD)
STATION 0+00 TO 103+00

FAS NO	SECTION	COUNTY	TOTAL SHEETS	SHEET NO.
341	15-00120-00-RS		3	2
PROJECT RS-0341(112)				
CONTRACT # 87564				



STRUCTURAL DESIGN
STA. 0+00 TO STA. 103+00
SEC. 15-00120-00-RS

STRUCTURAL DESIGN TRAFFIC YEAR	2024
CURRENT A.D.T.	300
A.D.T. 2024	350
P.V.	308
S.U.	31
M.U.	11
CLASS	IV
MINIMUM SOIL SUPPORT IBV	3
TRAFFIC FACTOR	0.012
Dt REQUIRED	2.10

EXISTING BASE:

8" + AGGREGATE BASE	8" X 0.06 = 0.48
2.5" BIT PLANT MIX (LA)	2.5" X 0.12 = 0.30
1.75" BIT. CONC MIXTURE COMPLETE	1.75" X 0.23 = 0.40
1.25" BIT. CONC CL I (POST 1955)	1.25" X 0.30 = 0.38
SUBTOTAL EXISTING	1.56
PROPOSED:	-
COLD MILL 1.5" EXISTING SURFACE	1.5" X -0.30 = -0.45
1" LEVEL BINDER (MM) , IL-9.5FG, N50	1" X 0.40 = 0.40
1.75" HMA SURF. CSE., MIX "C", N50	1.75" X 0.40 = 0.70
Dt TOTAL	2.21

SUMMARY OF QUANTITIES

CONSTRUCTION TYPE CODE 0005

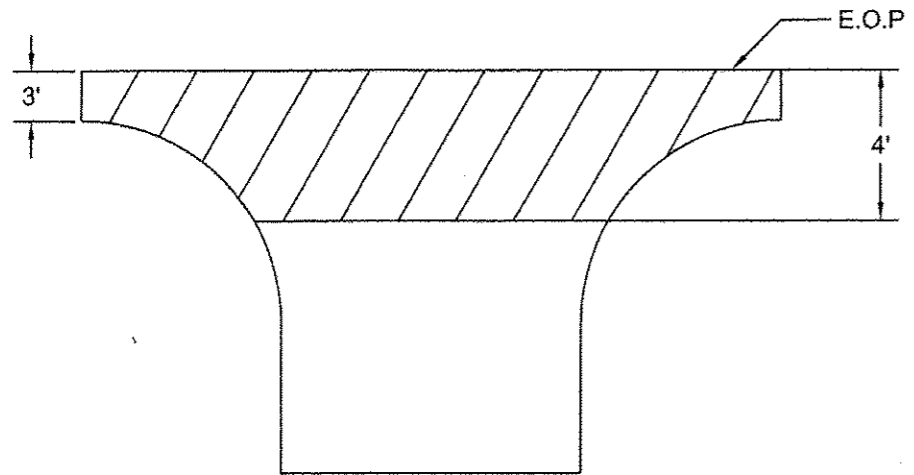
CODE NO.	ITEM	UNIT	QUANTITY
* 40600627	LEVELING BINDER (MACHINE METHOD), IL-9.5FG, N50	TON	1,425
40600990	TEMPORARY RAMP	SQ YD	30
40603310	HOT- MIX ASPHALT SURFACE COURSE, MIX "C", N50	TON	2,500
40800050	INCIDENTAL HOT-MIX ASPHALT SURFACING	TON	50
44000155	HOT-MIX ASPHALT SURFACE REMOVAL, 1-1/2"	SQ YD	26,245
* 48101200	AGGREGATE SHOULDERS, TYPE B	TON	680
67100100	MOBILIZATION	L SUM	1
70100460	TRAFFIC CONTROL AND PROTECTION, STANDARD 701306	L SUM	1
70300100	SHORT TERM PAVEMENT MARKING	FOOT	2,060
# 78001110	PAINT PAVEMENT MARKING - LINE 4"	FOOT	4,820
* X4060110	BITUMINOUS MATERIALS (PRIME COAT) - POUND	POUND	17,465

* INDICATES SEE SPECIAL PROVISIONS
INDICATES SPECIALTY ITEM

BITUMINOUS MIXTURE TABLE

	HMA LEVEL BINDER	HMA SURFACE	INCIDENTAL HMA
PG GRADE	PG 64-22	PG 64-22	PG 64-22
DESIGN AIR VOIDS	4.0 % @ N50	4.0 % @ N50	4.0 % @ N50
MIX COMPOSITION	IL-9.5FG	IL 9.5	IL 9.5
FRICTION AGGREGATE		MIXTURE "C"	MIXTURE "C"
DENSITY CONTROL METHOD	SATISFACTION OF ENG.	CORRELATION	SATISFACTION OF ENG.

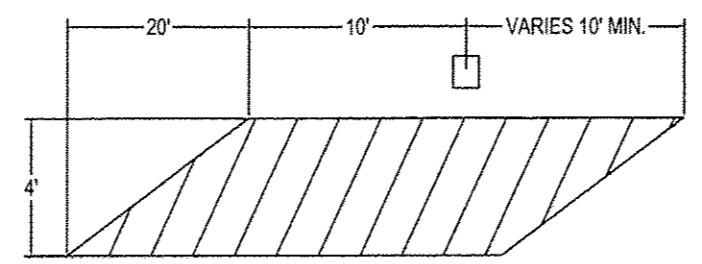
FAS NO.	SECTION	COUNTY	TOTAL SHEETS	SHEET NO.
341	15-00120-00-RS		3	3
PROJECT RS-0341(112)				
CONTRACT # 87564				



TYPICAL FIELD & PRIVATE ENTRANCE

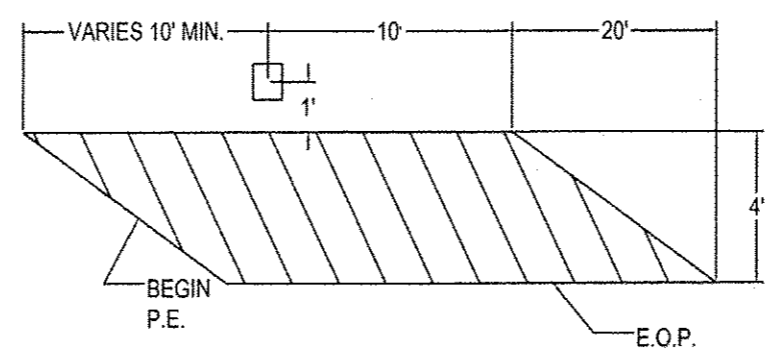
19 EACH

LT. STA.	RT. STA.	RT. STA.
21+90	7+50	60+84
25+05	16+15	62+80
35+16	21+90	85+10
38+86	35+92	87+10 (2)
88+19	37+84	88+75 (2)
	39+53	93+85



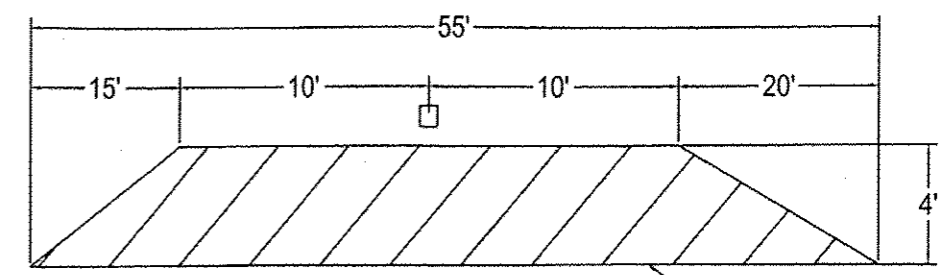
TYPICAL MAILBOX FOLLOWING

0 EACH



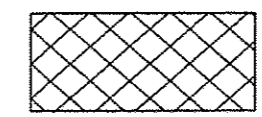
TYPICAL MAILBOX LEAD IN

1 EACH
37+50 RT.

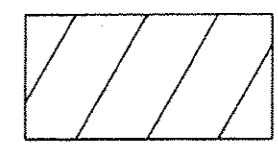


TYPICAL MAILBOX TURN OUT

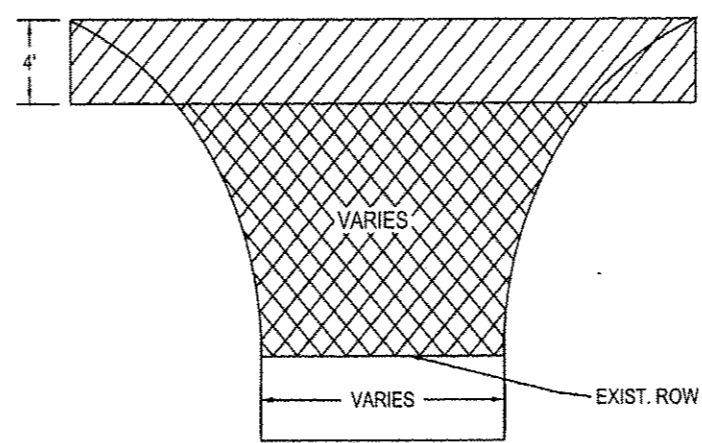
0 EACH



AREA TO BE PAID AS
INCIDENTAL BITUMINOUS SURFACING



AREA TO BE CONSTRUCTED
DURING MAINLINE PAVING OPERATIONS
SLOPE = 3/4" PER FOOT



TYPICAL SIDE ROAD RETURN

4 EACH
STA. 49+20 RT & LT
STA. 102+10 RT & LT

NOTES

1. USE SAME MAINLINE MATERIAL FOR SIDE ROAD RETURNS, FIELD & PRIVATE ENTRANCES, AND MAILBOXES.
2. AGGREGATE SHOULDERS TO BE PLACED BEHIND SIDE ROAD RETURNS, FIELD & PRIVATE ENTRANCES, AND MAILBOXES AS DIRECTED BY THE ENGINEER.
3. SHORT TERM PAVEMENT MARKINGS TO BE REMOVED BY FORD COUNTY PERSONNEL.
4. THE FOLLOWING APPLICATION RATES HAVE BEEN ASSUMED IN CALCULATING QUANTITIES:

AGGREGATE SHOULDERS	2.00 TON / CU YD
BIT MATL (PR CT)	0.05 LBS / SQ FT
HOT MIX ASPHALT	112 # / SQ YD / INCH
SHORT TERM PVMT MKING	4 FT / 40 FT OF APPL.