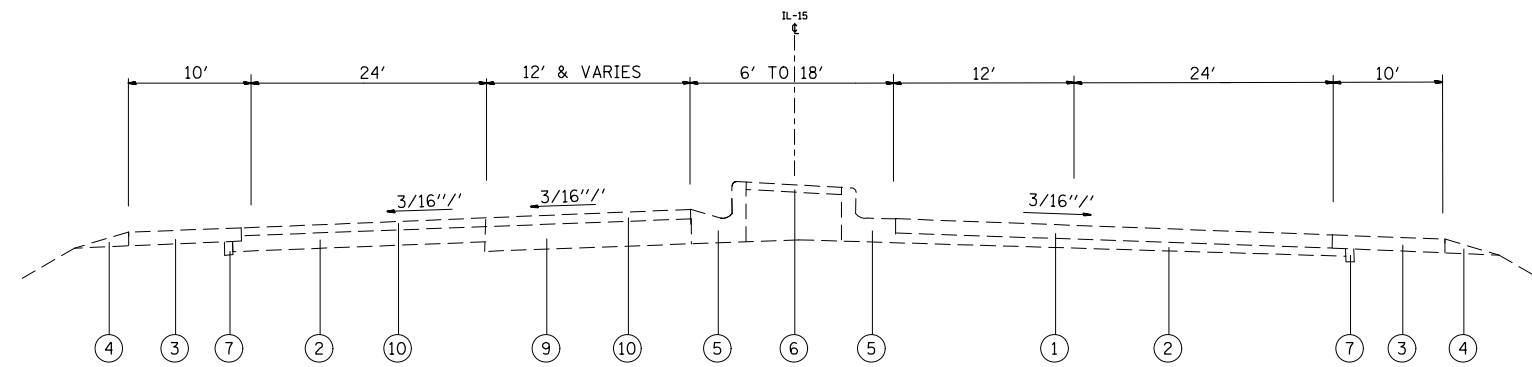
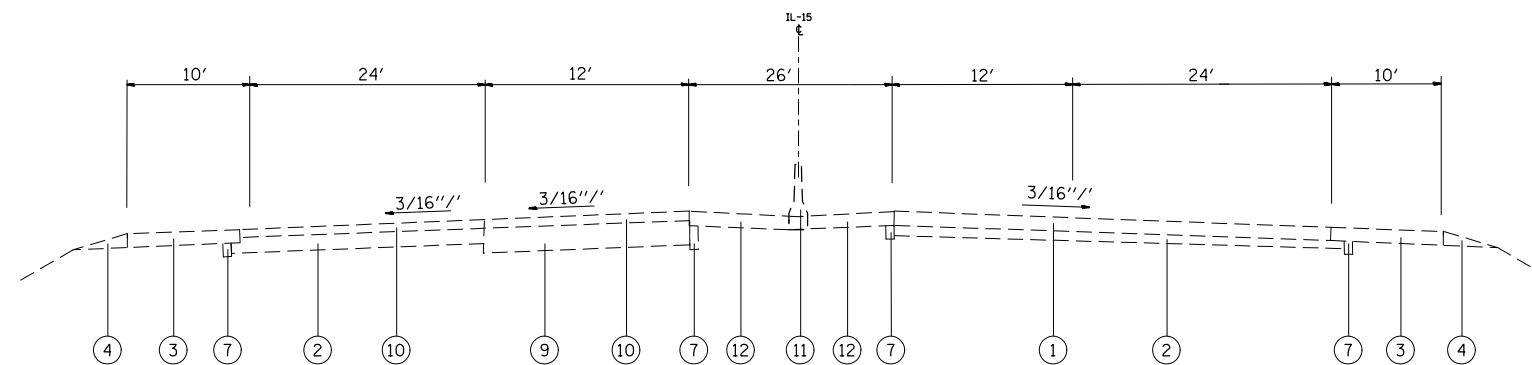


**LEGEND**

- ① EXISTING CONTINUOUS REINFORCED PCC PAVEMENT, 9"
- ② EXISTING STABILIZED SUB-BASE, 4"
- ③ EXISTING HMA SHOULDER, 9"
- ④ EXISTING AGGREGATE SHOULDER, TYPE B
- ⑤ EXISTING COMBINATION CONCRETE CURB AND GUTTER, TYPE B-9, 24
- ⑥ EXISTING CONCRETE MEDIAN SURFACE, 4"
- ⑦ EXISTING PIPE UNDERDRAIN, 4"
- ⑧ EXISTING CONCRETE MEDIAN, TYPE C-4
- ⑨ EXISTING PCC BASE COURSE, 13"
- ⑩ EXISTING HMA SURFACE COURSE, MIX D, CLASS I 1 1/2"
- ⑪ EXISTING CONCRETE BARRIER
- ⑫ EXISTING PCC BASE COURSE 9"



**EXISTING TYPICAL IL ROUTE 15**  
MILE MARKER 0.3 TO MILE MARKER 0.6



**EXISTING TYPICAL IL ROUTE 15**  
MILE MARKER 0.6 TO MILE MARKER 1.8

FILE NAME =	USER NAME = lagemannge	DESIGNED -	REVISED -
ct:\pwork\pwork\lagemannge\d0388138\0876H25-sht-plan.dgn		DRAWN -	REVISED -
	PLOT SCALE = 100.0000' / 1in.	CHECKED -	REVISED -
	PLOT DATE = 4/15/2014	DATE -	REVISED -

**STATE OF ILLINOIS**  
**DEPARTMENT OF TRANSPORTATION**

**EXISTING TYPICAL SECTIONS**

SCALE: SHEET NO. OF SHEETS STA. TO STA.

F.A.P. RTE.	SECTION	COUNTY	TOTAL SHEETS	SHEET NO.
•	29-1-1, (31,410,410-1)I-1	ST. CLAIR	17	8
			CONTRACT NO. 76H25	
FED. ROAD DIST. NO.		ILLINOIS FED. AID PROJECT		