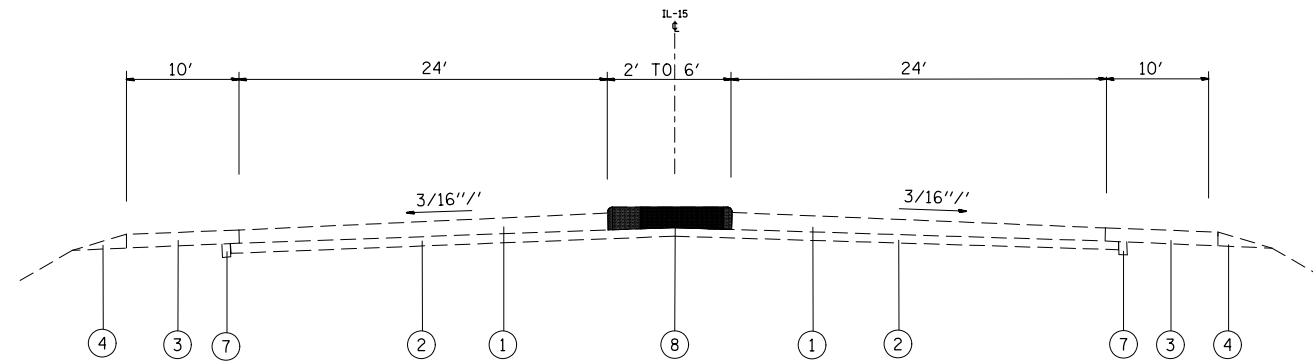
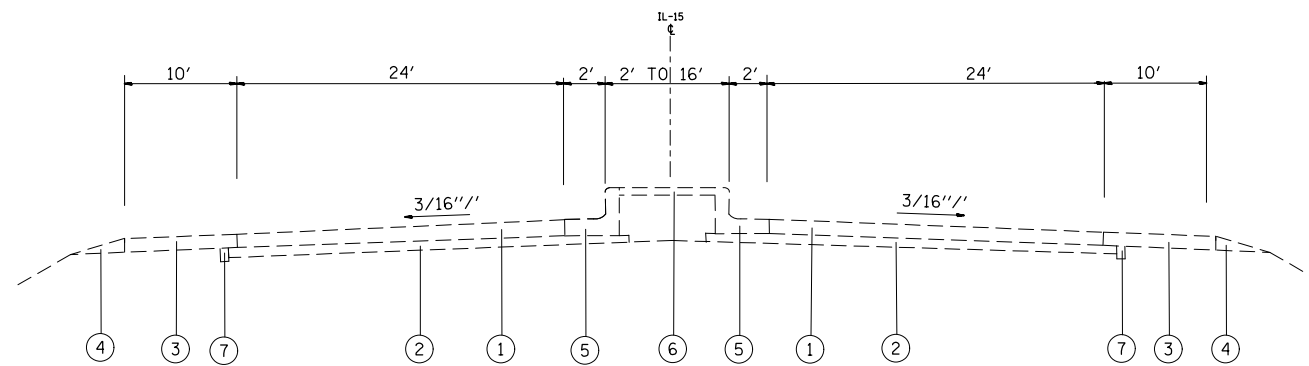


LEGEND

- ① EXISTING CONTINUOUS REINFORCED PCC PAVEMENT, 9"
- ② EXISTING STABILIZED SUB-BASE, 4"
- ③ EXISTING HMA SHOULDER, 9"
- ④ EXISTING AGGREGATE SHOULDER, TYPE B
- ⑤ EXISTING COMBINATION CONCRETE CURB AND GUTTER, TYPE B-9, 24
- ⑥ EXISTING CONCRETE MEDIAN SURFACE, 4"
- ⑦ EXISTING PIPE UNDERDRAIN, 4"
- ⑧ EXISTING CONCRETE MEDIAN, TYPE C-4
- ⑨ EXISTING PCC BASE COURSE, 13"
- ⑩ EXISTING HMA SURFACE COURSE, MIX D, CLASS I 1 1/2"
- ⑪ EXISTING CONCRETE BARRIER
- ⑫ EXISTING PCC BASE COURSE 9"



EXISTING TYPICAL IL ROUTE 15
MILE MARKER 0.0 TO MILE MARKER 0.1



EXISTING TYPICAL IL ROUTE 15
MILE MARKER 0.1 TO MILE MARKER 0.3

* FAP 103674

FILE NAME =	USER NAME = lagemannge	DESIGNED -	REVISED -
et:\pwork\work\pwork\lagemannge\10388138\0876H25-sht-plan.dgn		DRAWN -	REVISED -
	PLOT SCALE = 100.0000' / 1in.	CHECKED -	REVISED -
	PLOT DATE = 4/15/2014	DATE -	REVISED -

STATE OF ILLINOIS
DEPARTMENT OF TRANSPORTATION

EXISTING TYPICAL SECTIONS

SCALE: SHEET NO. 1 OF 13 SHEETS STA. TO STA.

F.A.P. RTE.	SECTION	COUNTY	TOTAL SHEETS	SHEET NO.
•	29-I-1, (31,410,410-1)-1	ST. CLAIR	17	7
CONTRACT NO. 76H25				
FED. ROAD DIST. NO.	ILLINOIS	FED. AID PROJECT		