

06-13-14 LETTING ITEM 242

F.A. RTE.	SECTION	COUNTY	TOTAL SHEETS	SHEET NO.
* VA	***	**	17	1
			ILLINOIS CONTRACT NO.	72G82

* D6 CABLE/GUARDRAIL 2015
** VAR

D-96-053-14

STATE OF ILLINOIS
DEPARTMENT OF TRANSPORTATION
DIVISION OF HIGHWAYS

**PROPOSED
HIGHWAY PLANS**

VARIOUS ROUTES
SECTION D6 CABLE /GUARDRAIL 2015
SAFETY ITEM REPAIR
VARIOUS COUNTIES IN D6

C-96-053-14

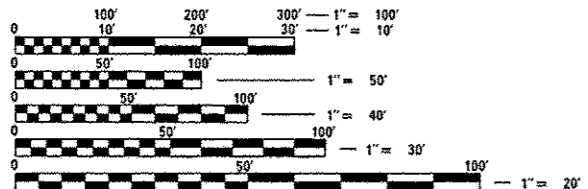
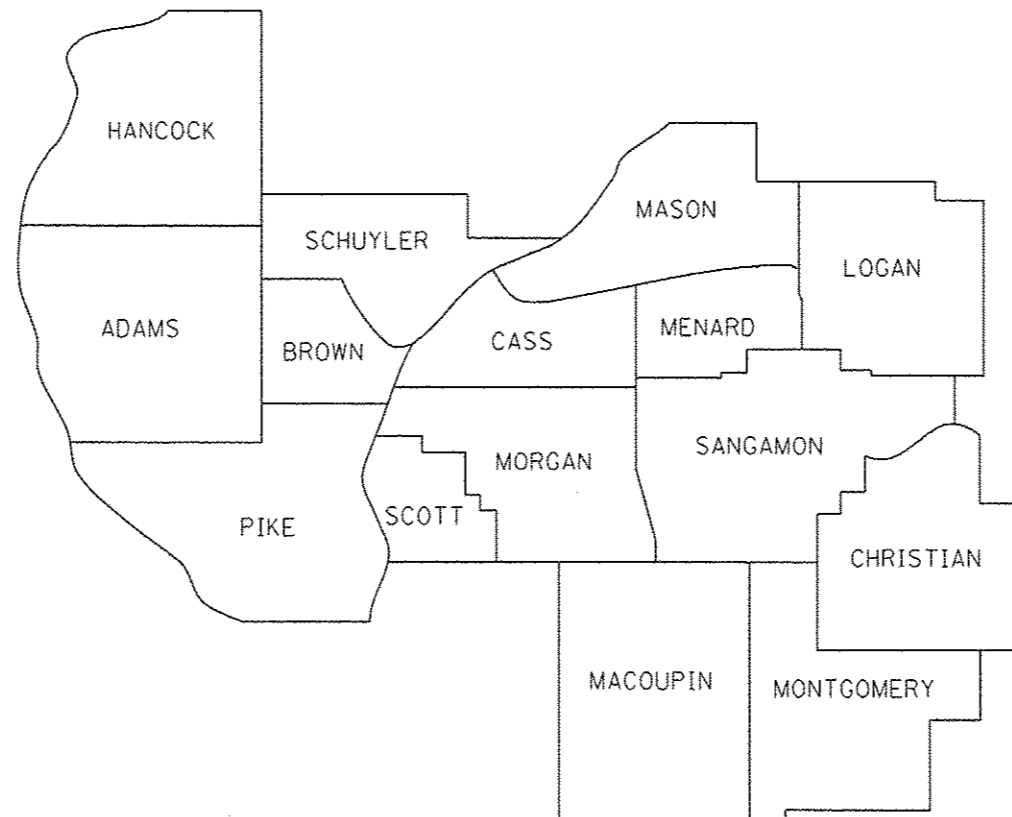
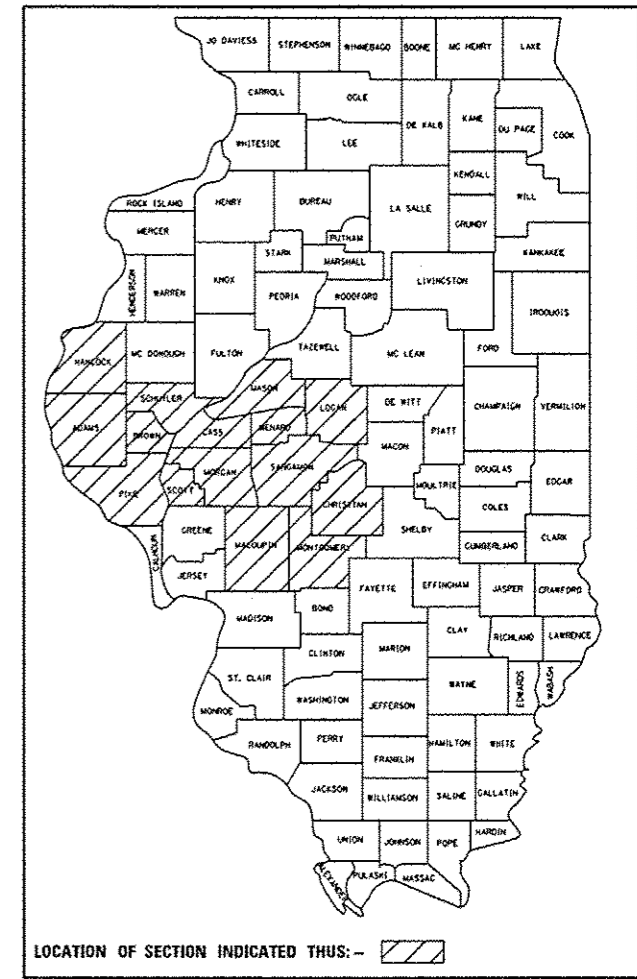
INDEX OF SHEETS

- 1 COVERSHEET
- 2 GENERAL NOTES
- 3-5 SUMMARY OF QUANTITIES
- 6-16 PRE-MGS HIGHWAY STANDARDS
- 17 CABLE GUARD MARKER DETAIL

FOR LIST OF STANDARDS, SEE SHEET NO. 2

NOTE:

SECTION D6 CABLE /GUARDRAIL 2015
CONSISTS OF REPAIR OF DAMAGED
GUARDRAIL AND OTHER ITEM AS
DIRECTED BY THE ENGINEER ON
VARIOUS ROUTES IN IDOT DISTRICT
SIX UNDER STATE JURISDICTION



FULL SIZE PLANS HAVE BEEN PREPARED USING STANDARD
ENGINEERING SCALES. REDUCED SIZED PLANS WILL NOT
CONFORM TO STANDARD SCALES. IN MAKING MEASUREMENTS
ON REDUCED PLANS, THE ABOVE SCALES MAY BE USED.

J.U.L.I.E.
JOINT UTILITY LOCATION INFORMATION FOR EXCAVATION
1-800-892-0123
OR 811

PROJECT ENGINEER VINCE MADONIA 217-785-9046
TEAM ENGINEER JAY EDWARDS 217-785-5321

CONTRACT NO. 72G82

STATE OF ILLINOIS
DEPARTMENT OF TRANSPORTATION
DIVISION OF HIGHWAYS

SUBMITTED March 22 20 14
Roger Z. Osman
DEPUTY DIRECTOR OF HIGHWAYS, REGION ENGINEER

May 9 20 14
John D. Baranzelli PE
ENGINEER OF DESIGN AND ENVIRONMENT

May 9 20 14
Omer Osman PE
DIRECTOR OF HIGHWAYS, CHIEF ENGINEER

PRINTED BY THE AUTHORITY
OF THE STATE OF ILLINOIS

HIGHWAY STANDARDS

STANDARD NO.	TITLE
630001-10	STEEL PLATE BEAM GUARDRAIL
630301-06	SHOULDER WIDENING FOR TYPE 1 (SPECIAL) GUARDRAIL TERMINALS
631011-09	TRAFFIC BARRIER TERMINAL, TYPE 2
631026-05	TRAFFIC BARRIER TERMINAL, TYPE 5
631031-12	TRAFFIC BARRIER TERMINAL, TYPE 6
635006-03	REFLECTOR AND TERMINAL MARKER PLACEMENT
643001-02	SAND MODULE IMPACT ATTENUATORS
664001-02	CHAIN LINK FENCE
665001-02	WOVEN WIRE FENCE
701001-02	OFF-ROAD OPERATIONS, 2L, 2W, MORE THAN 15' (4.5 M) AWAY
701006-05	OFF-ROAD OPERATIONS, 2L, 2W, 15' (4.5 M) TO 24" (600 MM) FROM PAVEMENT EDGE
701101-04	OFF-ROAD OPERATIONS, MULTILANE, 15' (4.5 M) TO 24" (600 MM) FROM PAVEMENT EDGE
701106-02	OFF-ROAD OPERATIONS, MULTILANE, MORE THAN 15' (4.5 M) AWAY
701201-04	LANE CLOSURE, 2L, 2W, DAY ONLY, FOR SPEEDS > 45 MPH
701301-04	LANE CLOSURE, 2L, 2W, SHORT TIME OPERATIONS
701400-07	APPROACH TO LANE CLOSURE, FREEWAY/EXPRESSWAY
701406-08	LANE CLOSURE, FREEWAY/EXPRESSWAY, DAY OPERATIONS ONLY
701411-08	LANE CLOSURE, MULTILANE, AT ENTRANCE OR EXIT RAMP, FOR SPEEDS > 45 MPH
701421-06	LANE CLOSURE, MULTILANE, DAY OPERATIONS ONLY, FOR SPEEDS > 45 MPH TO 55 MPH
701422-06	LANE CLOSURE, MULTILANE, FOR SPEEDS > 45 MPH TO 55 MPH
701426-06	LANE CLOSURE, MULTILANE, INTERMITTENT OR MOVING OPERATION, FOR SPEEDS ≥ 45 MPH
701427-02	LANE CLOSURE, MULTILANE, INTERMITTENT OR MOVING OPERATION, FOR SPEEDS < 40 MPH
701456-03	PARTIAL EXIT RAMP CLOSURE FREEWAY/EXPRESSWAY
701501-06	URBAN LANE CLOSURE, 2L, 2W, UNDIVIDED
701502-06	URBAN LANE CLOSURE, 2L, 2W, WITH BIDIRECTIONAL LEFT TURN LANE
701601-09	URBAN LANE CLOSURE, MULTILANE, 1W OR 2W WITH NONTRAVERSABLE MEDIAN
701602-07	URBAN LANE CLOSURE, MULTILANE, 2W WITH BIDIRECTIONAL LEFT TURN LANE
701606-09	URBAN LANE CLOSURE, MULTILANE, 2W WITH MOUNTABLE MEDIAN
701701-09	URBAN LANE CLOSURE, MULTILANE INTERSECTION
701901-03	TRAFFIC CONTROL DEVICES
701428	

GENERAL NOTES

ALL DISTURBED AREAS CAUSED BY THE CONTRACTOR'S OPERATIONS SHALL BE GRADED AND SEEDED WITH CLASS 2 ROADSIDE MIXTURE AND FERTILIZED AS STATED IN SECTION 250 OF THE STANDARD SPECIFICATIONS. COST SHALL BE CONSIDERED INCLUDED IN THE UNIT COST OF THE WORK BEING PERFORMED.

REMOVAL OF DAMAGED IMPACT ATTENUATORS SHALL BE INCLUDED IN THE COST OF THE IMPACT ATTENUATOR BEING INSTALLED.

REMOVAL AND DISPOSAL OF DAMAGED FENCE SHALL BE INCLUDED IN THE COST OF THE FENCE BEING INSTALLED.

DISTRICT SIX	
EXAMINED <u>03/19</u>	20 <u>14</u>
<i>Michael Abbott / Eric Roger LeNoble</i>	
OPERATIONS ENGINEER	

EXAMINED <u>March 10</u>	20 <u>14</u>
<i>2RML</i>	
PROGRAM DEVELOPMENT ENGINEER	

EXAMINED <u>MARCH 10</u>	20 <u>14</u>
<i>Tommy L...</i>	
PROJECT IMPLEMENTATION ENGINEER	

FILE NAME *	USER NAME * perarava	DESIGNED -	REVISED -	STATE OF ILLINOIS DEPARTMENT OF TRANSPORTATION	GENERAL NOTES			F.A.* RTE.	SECTION	COUNTY	TOTAL SHEETS	SHEET NO.	
c:\pr\work\pilot\perarava\d8081776\067	C02-ehg-gennata.dgn	DRAWN -	REVISED -					* VA	***	**	17	2	
Default	PLOT SCALE * 100.0000 ' / in.	CHECKED -	REVISED -		SCALE:	SHEET	OF	SHEETS	STA.	TO STA.	[ILLINOIS] FED. AID PROJECT		
	PLOT DATE * Mar-27-2014 11:40:32AM	DATE -	REVISED -		*** 06 CABLE/GUARDRAIL 2015 ** VAR								

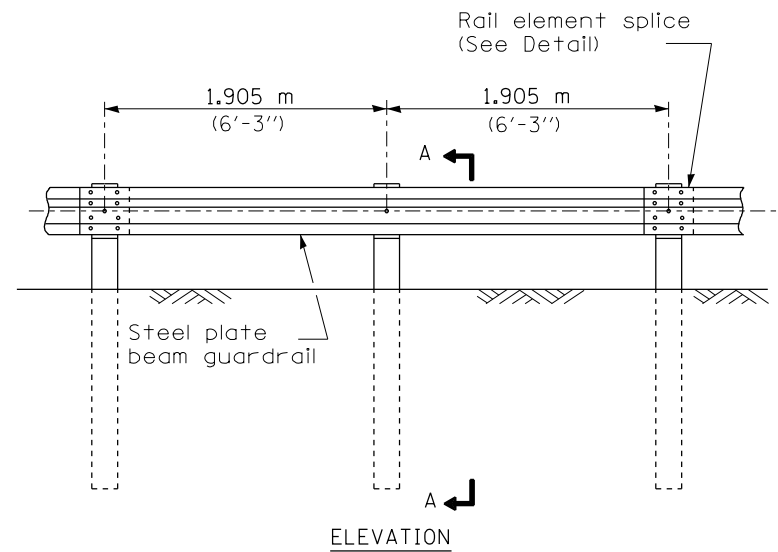
				100% STATE		
				CONSTRUCTION CODE		
CODE			TOTAL	REGULAR PROGRAM	MCHD	STATEWIDE HIGH-TENSION CABLE RAIL REPAIR
				6-00664-0300	6-00664-9996	0-01845-6001
				ROADWAY	ROADWAY	ROADWAY
				0021	0021	0021
				07A0E,01	07M0E,01	07A0E,02
6300001	STEEL PLATE BEAM GUARDRAIL, TYPE A, 6 FOOT POSTS	FOOT	350	200	150	
6300003	STEEL PLATE BEAM GUARDRAIL, TYPE A, 9 FOOT POSTS	FOOT	200	150	50	
6310045	TRAFFIC BARRIER TERMINAL, TYPE 2	EACH	1		1	
6310070	TRAFFIC BARRIER TERMINAL, TYPE 5	EACH	1		1	
6310085	TRAFFIC BARRIER TERMINAL, TYPE 6	EACH	1		1	
63100167	TRAFFIC BARRIER TERMINAL, TYPE 1 (SPECIAL) TANGENT	EACH	14	7	7	
63100169	TRAFFIC BARRIER TERMINAL, TYPE 1 (SPECIAL) FLARED	EACH	1		1	
63200310	GUARDRAIL REMOVAL	FOOT	900	750	150	
64300450	IMPACT ATTENUATORS (NON-REDIRECTIVE), TEST LEVEL 3	EACH	2	2		
64401300	HIGH TENSION CABLE MEDIAN BARRIER TERMINALS	EACH	1			1
66400105	CHAIN LINK FENCE, 4'	FOOT	300	200	100	
66500105	WOVEN WIRE FENCE, 4'	FOOT	300	100	200	
67100100	MOBILIZATION	L SUM	1	0.3	0.4	0.3
70100420	TRAFFIC CONTROL AND PROTECTION, STANDARD 701411	EACH	3	1	2	

FILE NAME :	USER NAME : sporkag	DESIGNED -	REVISED -	STATE OF ILLINOIS DEPARTMENT OF TRANSPORTATION	SUMMARY OF QUANTITIES			F.A. RTE.	SECTION	COUNTY	TOTAL SHEETS	SHEET NO.
\\psu-work\psidoc\sporkag\0301775\067202-sht-500.dgn		DRAWN -	REVISED -					* VA	***	**	17	3
Default	PLOT SCALE * 100.0000' / 1" /	CHECKED -	REVISED -		SCALE: SHEET OF SHEETS STA. TO STA.			ILLINOIS FED. AID PROJECT				
	PLOT DATE * Mar-27-2014 02:17:55PM	DATE -	REVISED -					CONTRACT NO. 72082				

				100% STATE		
				CONSTRUCTION CODE		
CODE			TOTAL	REGULAR PROGRAM	MCHD	STATEWIDE HIGH-TENSION CABLE RAIL REPAIR
				6-00664-0300	6-00664-9996	0-01845-6001
				ROADWAY	ROADWAY	ROADWAY
				0021	0021	0021
78200410	GUARDRAIL MARKERS, TYPE A	EACH	300	150	150	
78201000	TERMINAL MARKER - DIRECT APPLIED	EACH	32	15	17	
Z0008759	CALL OUT	EACH	26	16	10	
Z0008760	EMERGENCY WORK CALL OUT	EACH	25	4	8	13
Z0052000	REPAIR STEEL PLATE BEAM GUARDRAIL, TYPE A	FOOT	750	500	250	
Z0052410	REPAIR TRAFFIC BARRIER TERMINAL, TYPE 1 SPECIAL (TANGENT)	EACH	45	22	23	
Z0052415	REPAIR TRAFFIC BARRIER TERMINAL, TYPE 1 SPECIAL (FLARED)	EACH	1		1	
Z0052600	REPAIR TRAFFIC BARRIER TERMINAL, TYPE 2	EACH	1		1	
Z0053000	REPAIR TRAFFIC BARRIER TERMINAL, TYPE 5	EACH	1		1	
Z0053200	REPAIR TRAFFIC BARRIER TERMINAL, TYPE 6	EACH	1		1	
X0325231	CABLE GUARD MARKER	EACH	300		50	250
X0325899	REPAIR HIGH TENSION CABLE (GIBRALTAR)	FOOT	850		200	650
X0325900	REPAIR HIGH TENSION BARRIER TERMINAL (GIBRALTAR)	EACH	3		1	2
X0325901	REPAIR POSTS (GIBRALTAR)	EACH	140		40	100

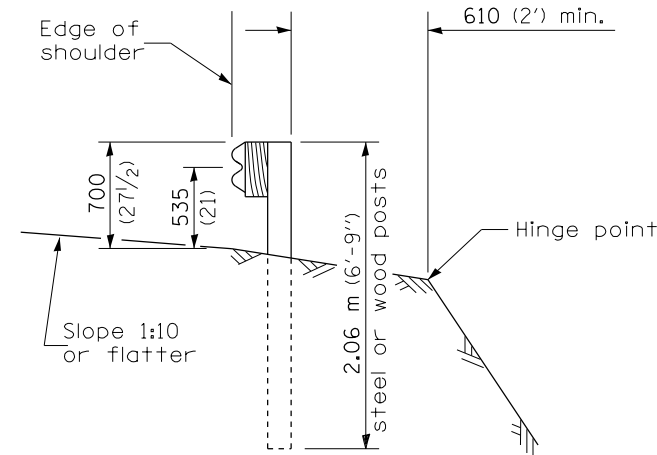
2013 05 14

				100% STATE		
				CONSTRUCTION CODE		
CODE			TOTAL	REGULAR PROGRAM	MCHD	STATEWIDE HIGH-TENSION CABLE RAIL REPAIR
				6-00664-0300	6-00664-9996	0-01845-6001
				ROADWAY	ROADWAY	ROADWAY
				0021	0021	0021
X0325902	REMOVE AND REPLACE POSTS (GIBALTAR)	EACH	125		60	65
X0327490	REPAIR HIGH TENSION CABLE (NU-CABLE)	FOOT	150		50	100
X0327491	REPAIR POSTS (NU-CABLE)	EACH	57		15	42
X0327492	REMOVE AND REPLACE POSTS (NU-CABLE)	EACH	80		30	50
X0327493	REPAIR HIGH TENSION BARRIER TERMINAL (NU-CABLE)	EACH	3		1	2
X6431220	REMOVE AND REPLACE IMPACT ATTENUATOR SAND MODULE	EACH	20	10	10	
X7011834	TRAFFIC CONTROL AND PROTECTION, CALL OUT WORK	EACH	18		9	9
X7011836	TRAFFIC CONTROL AND PROTECTION, FREEWAY/EXPRESSWAY, CALL OUT WORK	EACH	38	9	9	20

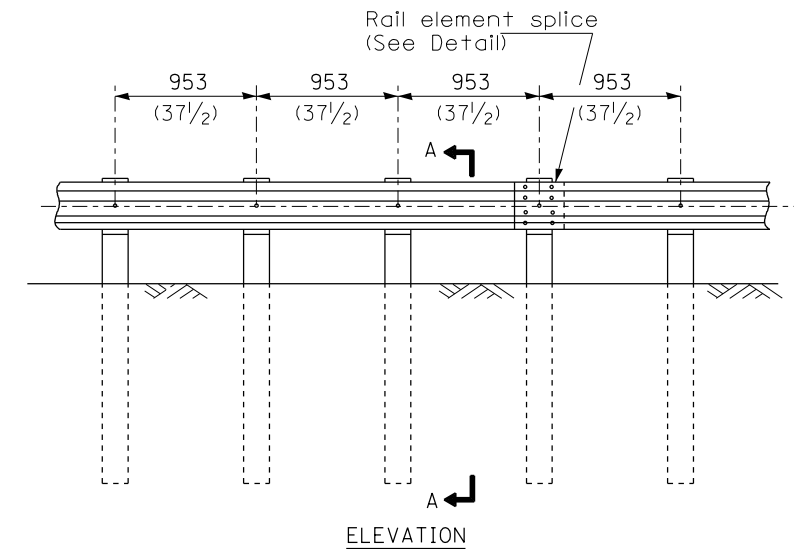


TYPE A

1.905 m (6'-3") Typical post spacing

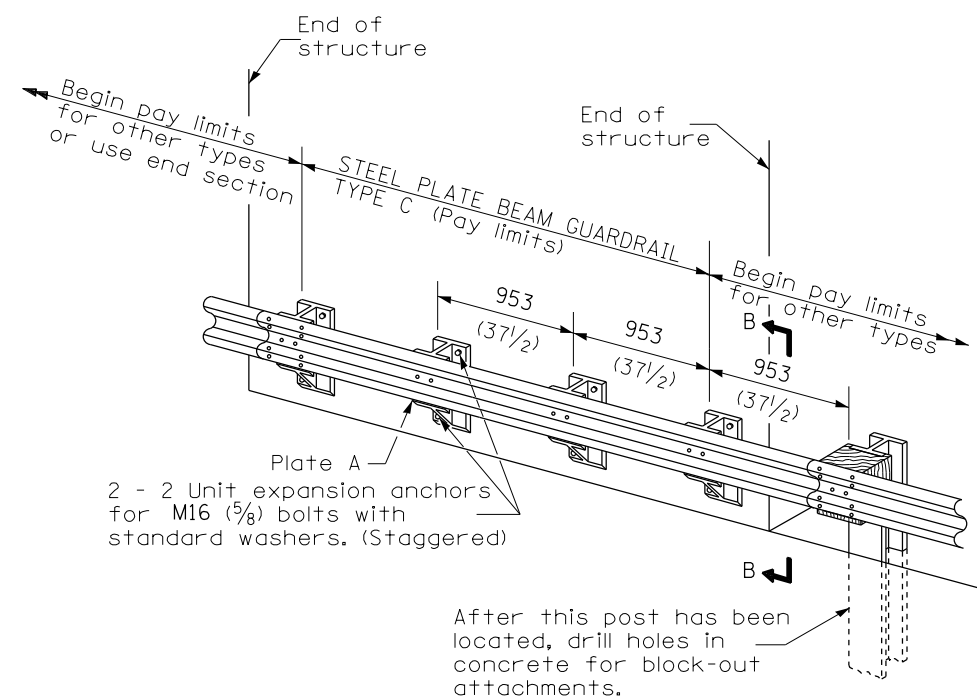


SECTION A-A



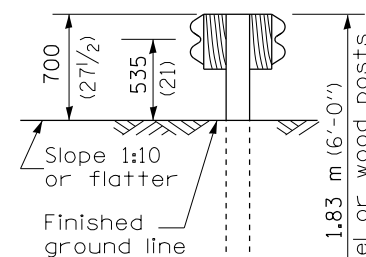
TYPE B

953 (37 1/2) Closed post spacing

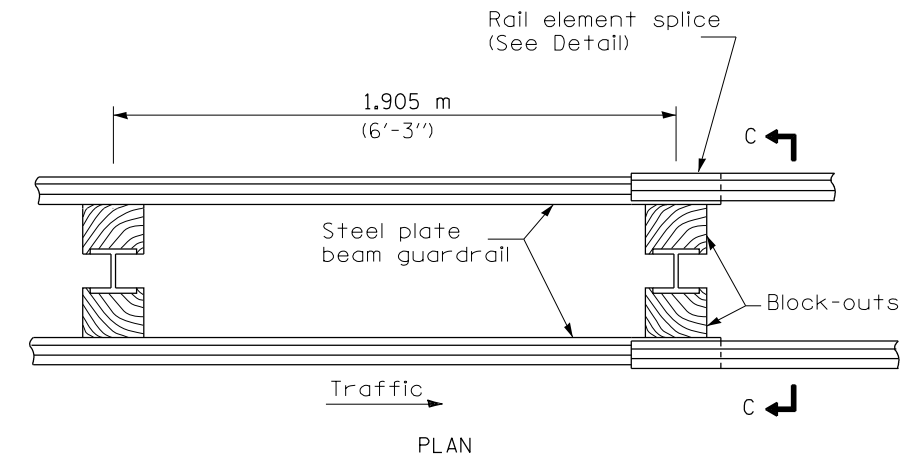


TYPE C

953 (37 1/2) Block-out spacing

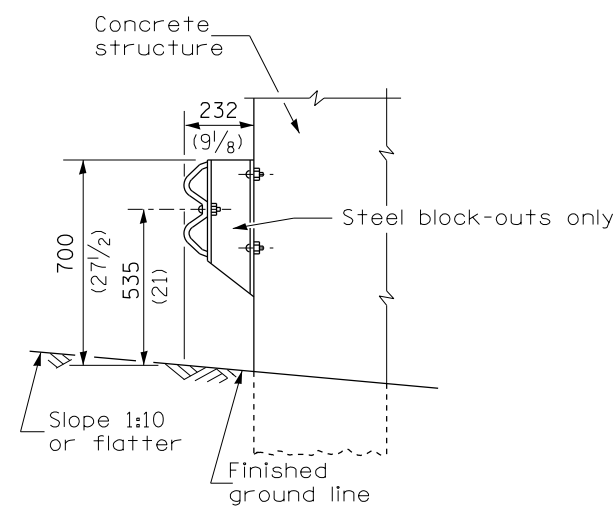


SECTION C-C



TYPE D

Double steel plate beam guardrail
1.905 m (6'-3") typical post spacing



SECTION B-B

GENERAL NOTES

All slope ratios are expressed as units of vertical displacement to units of horizontal displacement (V:H).

All dimensions are in millimeters (inches) unless otherwise shown.

FILE NAME =	USER NAME = sparksgw	DESIGNED -	REVISED -
ct:\pw\work\p\idot\sparksgw\0381776\0672082-sht-630001-06-SteelPlateBeamGrdrail.dgn		DRAWN -	REVISED -
Default	PLOT SCALE = 26.0000 ' / in.	CHECKED -	REVISED -
	PLOT DATE = Mar-27-2014 02:18:50PM	DATE -	REVISED -

**STATE OF ILLINOIS
DEPARTMENT OF TRANSPORTATION**

**PRE-MGS HIGHWAY STANDARD 630001-06
STEEL PLATE BEAM GUARDRAIL
EFFECTIVE 4-1-06**

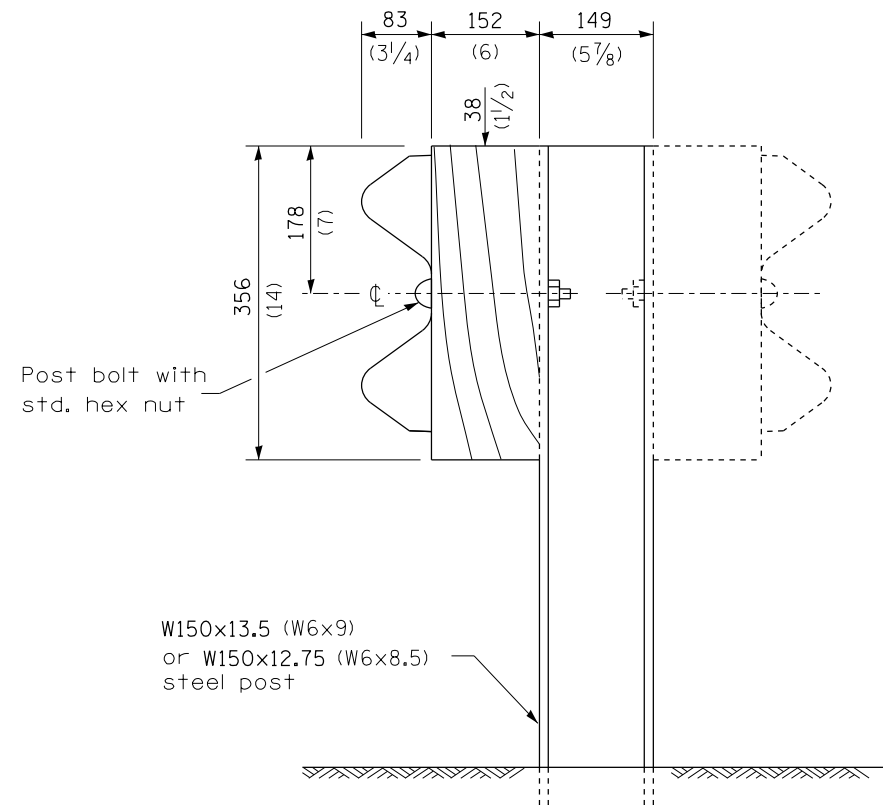
(SHEET 1 OF 4)

F.A. RTE.	SECTION	COUNTY	TOTAL SHEETS	SHEET NO.
VA	17	6
CONTRACT NO. 72G82			ILLINOIS FED. AID PROJECT	

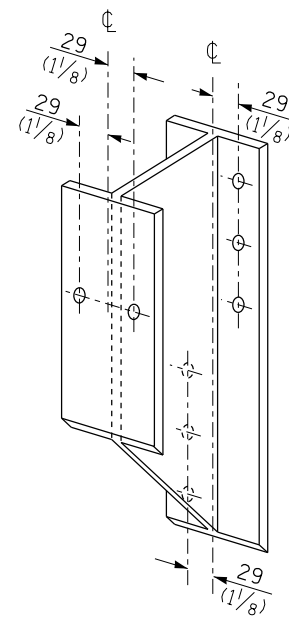
SCALE: SHEET OF SHEETS STA. TO STA.

*** D6 CABLE/GUARDRAIL 2015

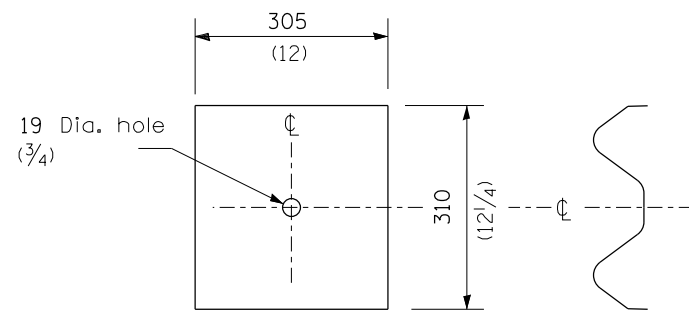
.. VAR



STEEL POST CONSTRUCTION



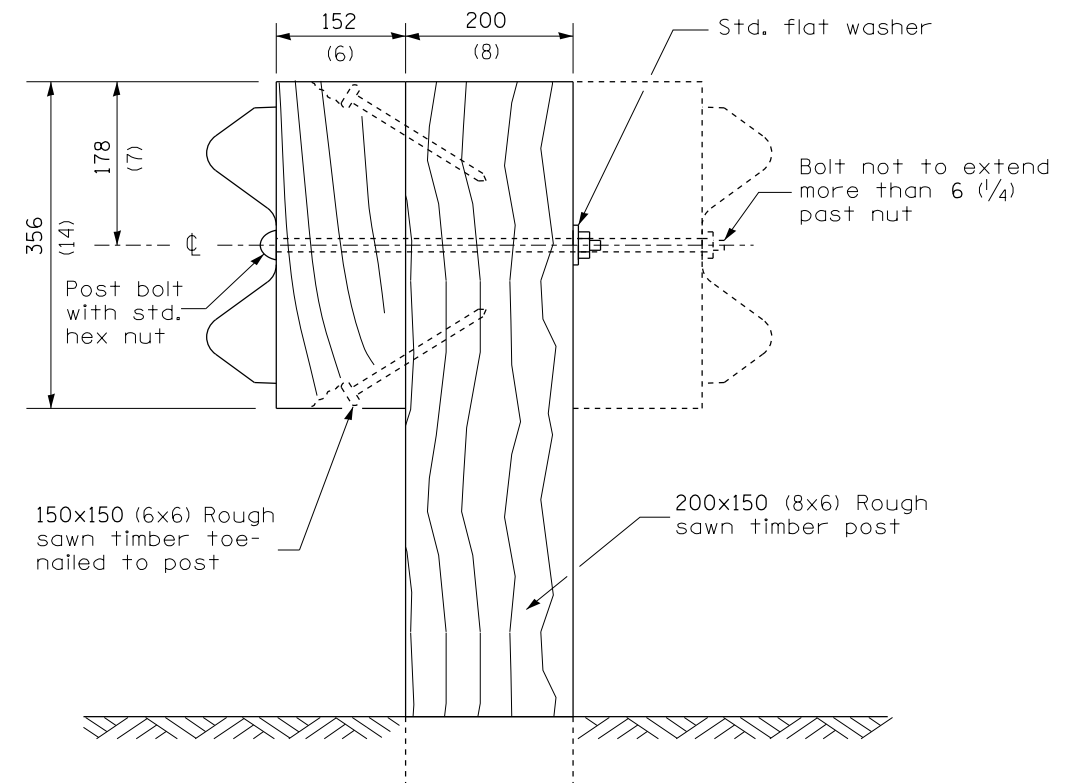
STEEL BLOCK-OUT DETAIL



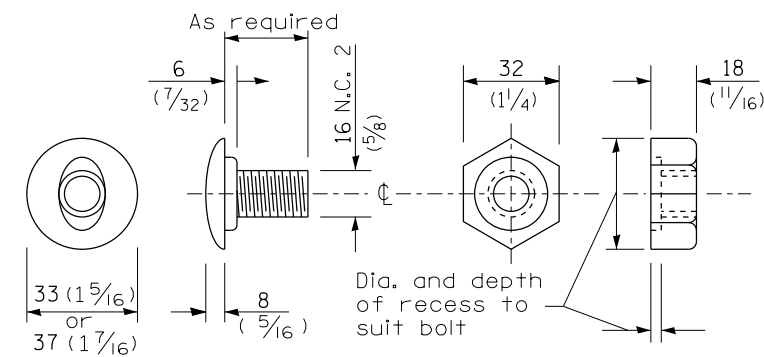
NOTE

Plate A shall be placed between rail element and block-out at non-splice mounting points only when steel block-outs are used.

PLATE A



WOOD POST CONSTRUCTION



POST OR SPLICE BOLT & NUT

FILE NAME =	USER NAME = sparksgw	DESIGNED -	REVISED -
ct:\pw\work\p\id\sparksgw\0381776\0672082-sht-630001-06-SteelPlateBeamGrdrail.dgn		DRAWN -	REVISED -
Default	PLOT SCALE = 26.0000 ' / in.	CHECKED -	REVISED -
	PLOT DATE = Mar-27-2014 02:18:50PM	DATE -	REVISED -

**STATE OF ILLINOIS
DEPARTMENT OF TRANSPORTATION**

**PRE-MGS HIGHWAY STANDARD 630001-06
STEEL PLATE BEAM GUARDRAIL
EFFECTIVE 4-1-06** (SHEET 2 OF 4)

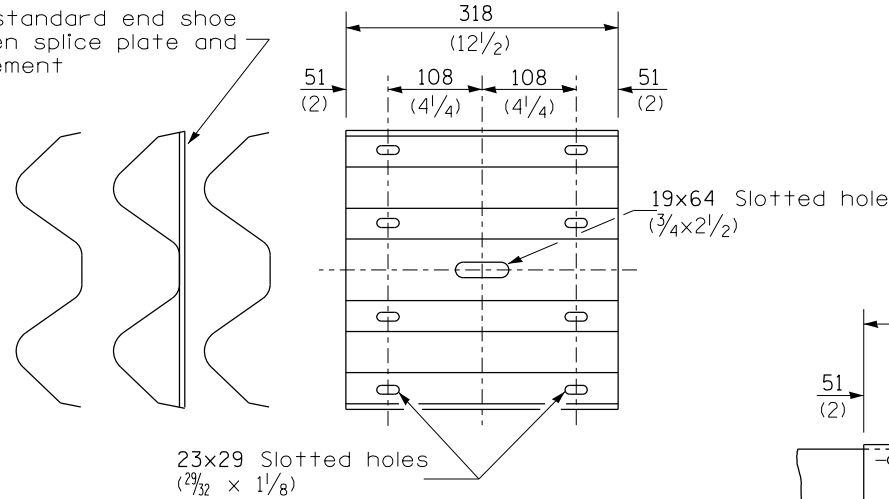
F.A. RTE.	SECTION	COUNTY	TOTAL SHEETS	SHEET NO.
• VA	•••	••	17	7
ILLINOIS FED. AID PROJECT			CONTRACT NO. 72G82	

SCALE: SHEET OF SHEETS STA. TO STA.

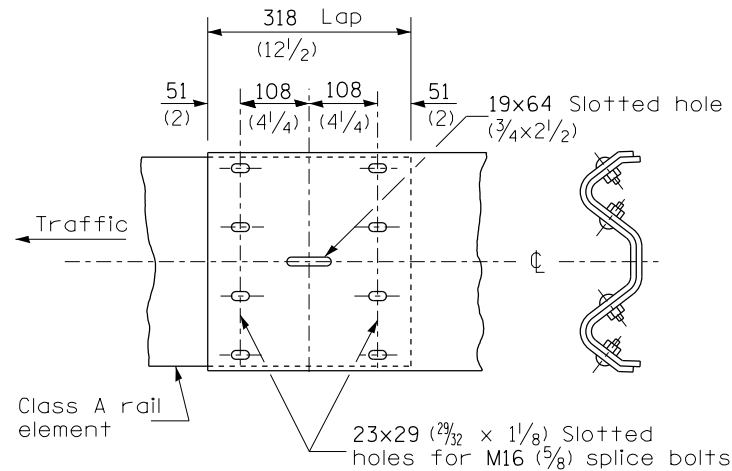
••• D6 CABLE/GUARDRAIL 2015

•• VAR

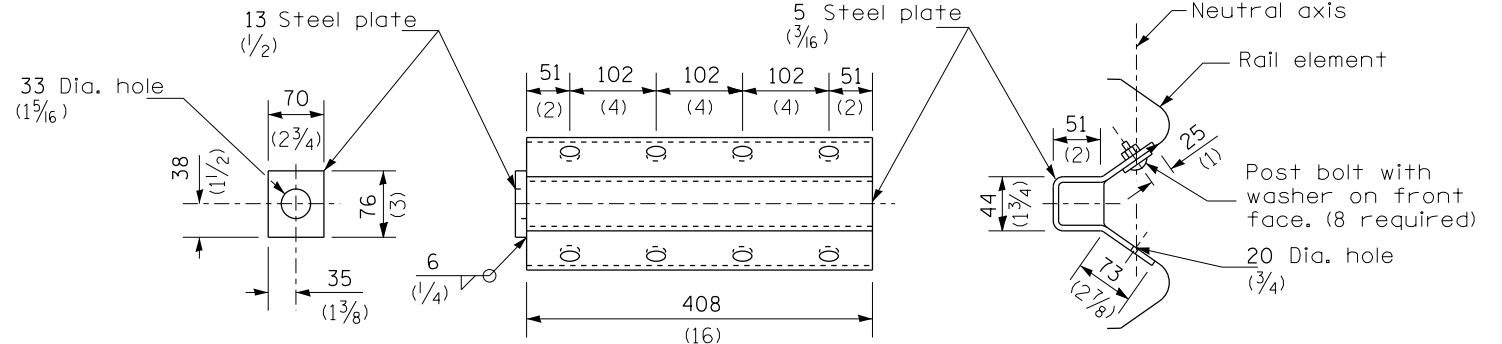
Place standard end shoe between splice plate and rail element



SPLICE PLATE

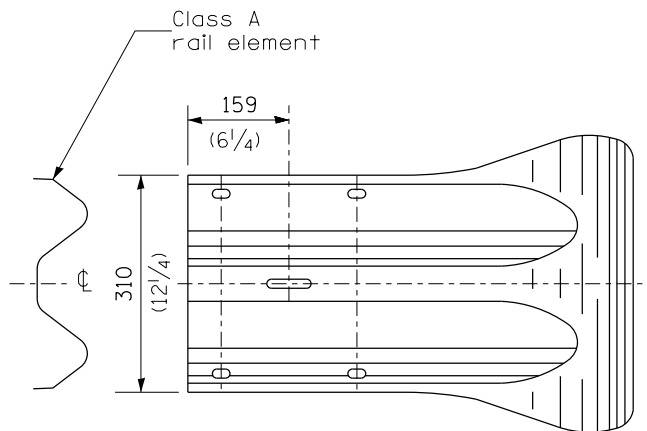
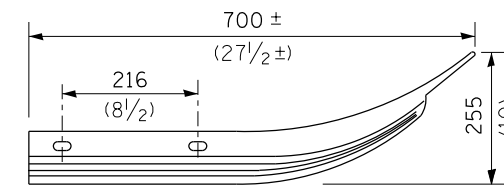


RAIL ELEMENT SPLICE

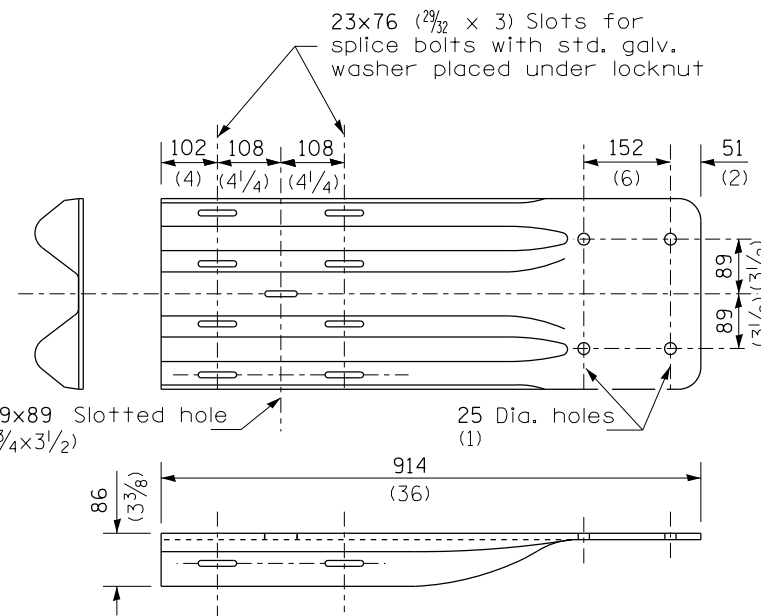


NOTE
Anchor plate T shall be used to attach cable assembly to guardrail when required on traffic barrier terminals.

ANCHOR PLATE T DETAILS



END SECTION



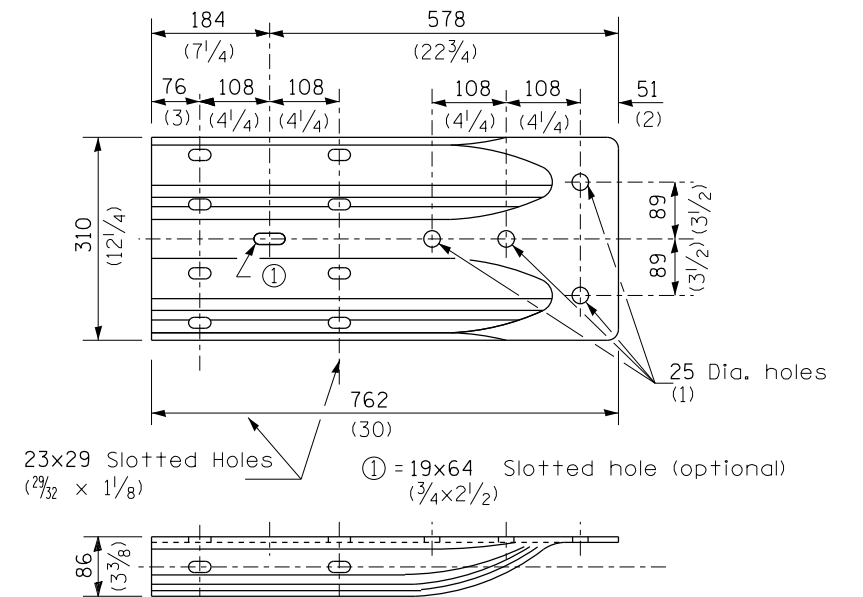
NOTE

When end shoe is attached to a bridge parapet which has an expansion joint, the bolts shall be provided with a locknut or double nut and shall be tightened only to a point that will allow guardrail movement.

The standard end shoe shall be attached to the concrete with pre-drilled or self-drilling anchor bolts. The anchor cone shall be set flush with the surface of the concrete.

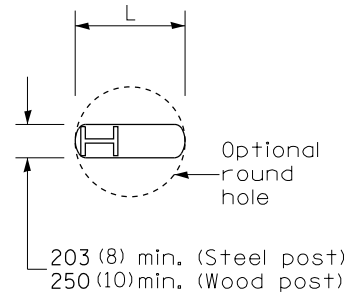
Externally threaded studs protruding from the surface of the concrete will not be permitted.

END SHOE

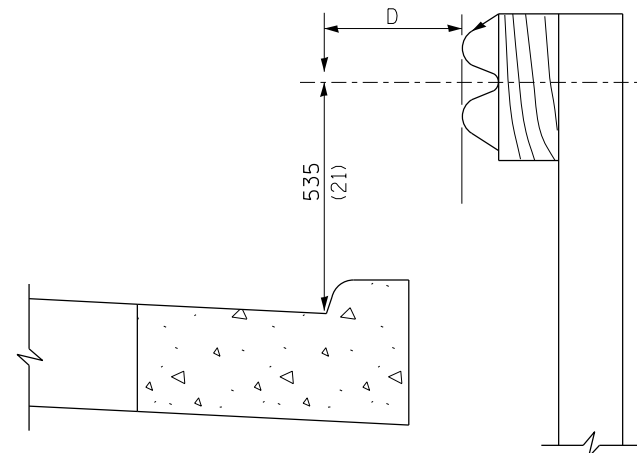


ALTERNATE END SHOE

FILE NAME =	USER NAME = sparksgw	DESIGNED -	REVISED -	STATE OF ILLINOIS DEPARTMENT OF TRANSPORTATION	PRE-MGS HIGHWAY STANDARD 630001-06 STEEL PLATE BEAM GUARDRAIL EFFECTIVE 4-1-06 (SHEET 3 OF 4)	F.A. RTE.	SECTION	COUNTY	TOTAL SHEETS	SHEET NO.	
Default	7282-sht-630001-06-SteelPlateBeamGuardrail.dgn	DRAWN -	REVISED -			VA	17	8	
	PLOT SCALE = 26.0000' / in.	CHECKED -	REVISED -			CONTRACT NO. 72G82					
	PLOT DATE = Mar-27-2014 02:18:50PM	DATE -	REVISED -			ILLINOIS FED. AID PROJECT					



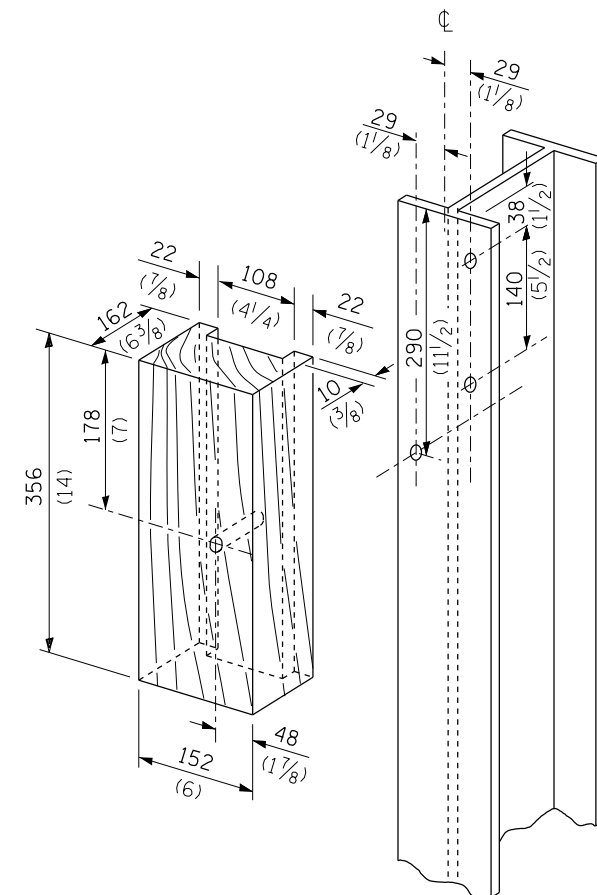
PLAN



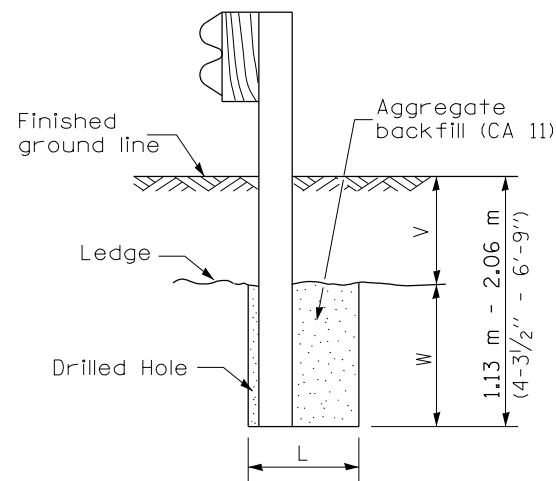
Note:
If it is necessary for D to be more than 300 (12) and less than 3.0 m (10'-0") type M-5 (M-2) curb and gutter (Std. 606001) shall be used in front of and in advance of the guardrail.

GUARDRAIL PLACED BEHIND CURB

(D = 0 desirable to 300 (12) maximum)



WOOD BLOCK-OUT AND STEEL POST DETAILS

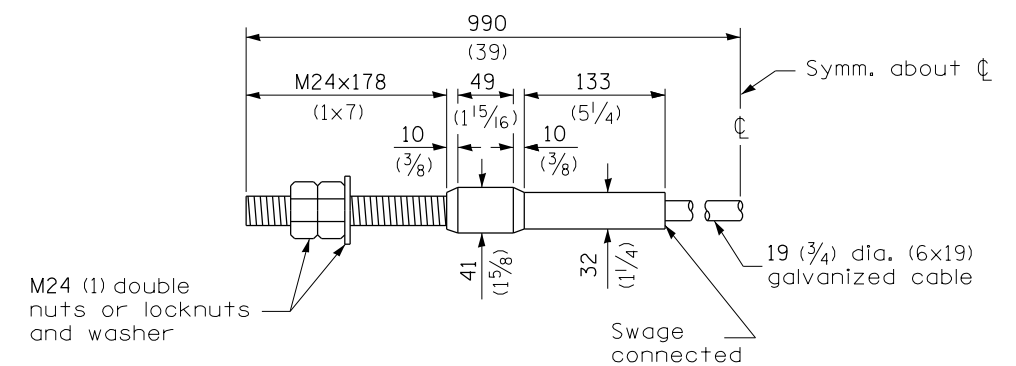


Note:
Ledge line is top of rock ledge or hard slag fill.

ELEVATION

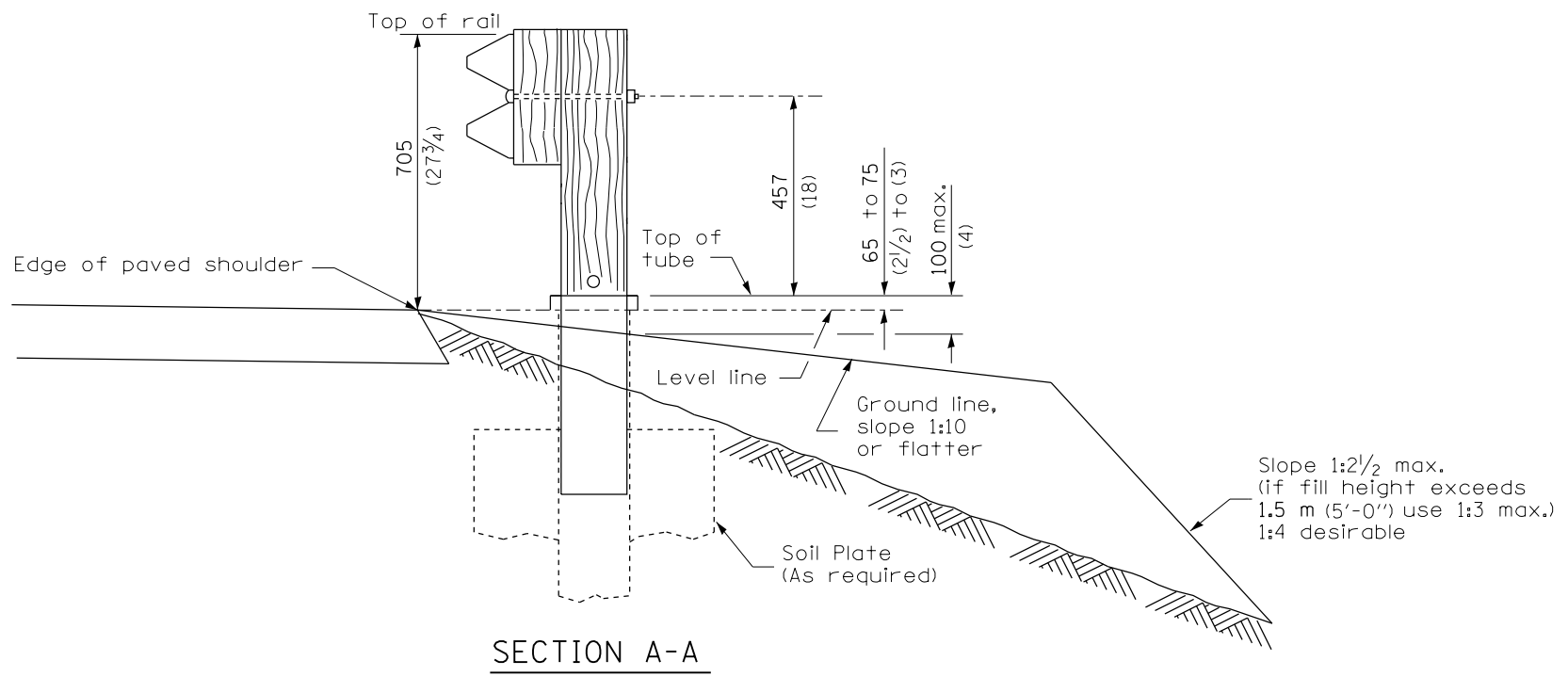
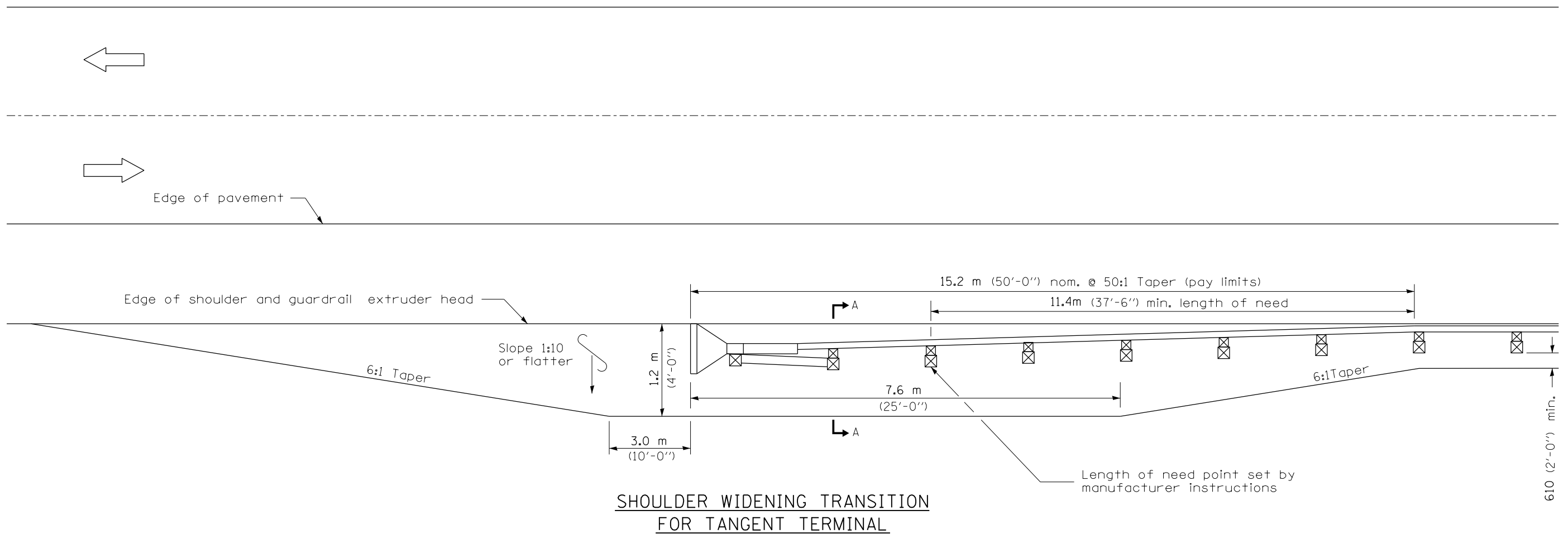
FOOTING FOR POST WHEN IMPERVIOUS MATERIAL IS ENCOUNTERED

V	W	L	
		Steel Post	Wood Post
0 - 460 (0 - 18)	610 (24)	530 (21)	580 (23)
>460 - 825 (>18 - 41.5)	305 (12)	203 (8)	250 (10)
>825 - 1.13 m (>41.5 - 53.5)	305 - 0 (12 - 0)	203 (8)	250 (10)



CABLE ASSEMBLY

(18,100 kg (40,000 lbs.) min. breaking strength)
Tighten to taut tension.



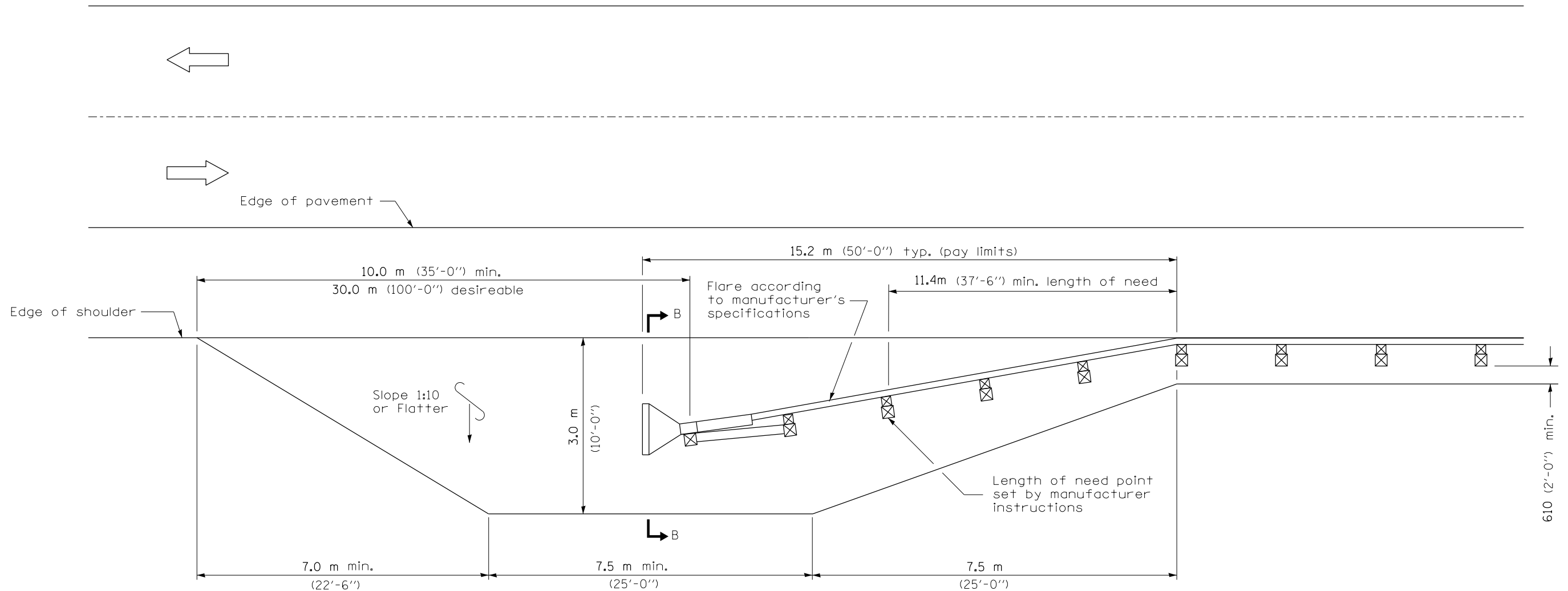
GENERAL NOTES

50:1 Taper required so the guardrail head will not encroach on the shoulder.

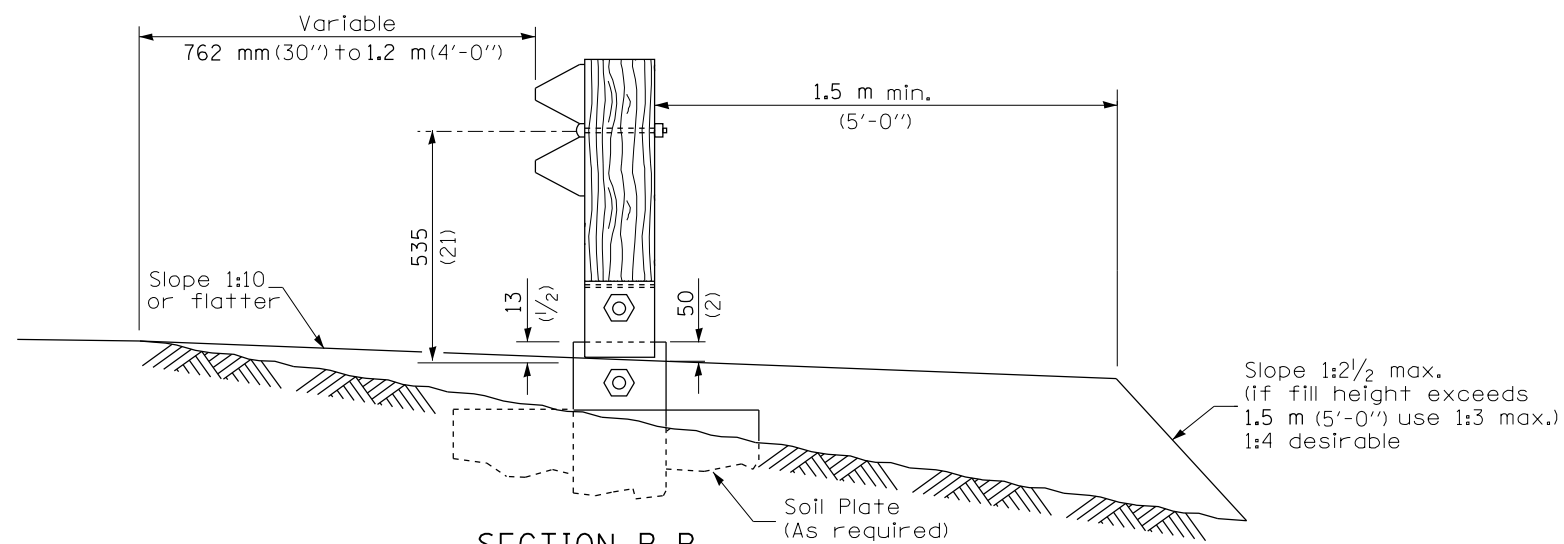
All slope ratios are expressed as units of vertical displacement to units of horizontal displacement (V:H).

All dimensions are in millimeters (inches) unless otherwise shown.

FILE NAME =	USER NAME = sparksgw	DESIGNED -	REVISED -	STATE OF ILLINOIS DEPARTMENT OF TRANSPORTATION	PRE-MGS HIGHWAY STANDARD 630301-03 SHOULDER WID. FOR TYPE 1 (SPL) GUARDRAIL TERMINAL EFFECTIVE 4-1-06				F.A. RTE.	SECTION	COUNTY	TOTAL SHEETS	SHEET NO.
Default	ct:\pw\work\p\dot\sparksgw\0381776\0672082-Pre-MGS HWAY_Standard 630301-03.dgn	DRAWN -	REVISED -		SCALE:	SHEET	OF	SHEETS	STA.	TO STA.	ILLINOIS FED. AID PROJECT	17	10
	PLOT SCALE = 26.0000' / in.	CHECKED -	REVISED -		(SHEET 1 OF 2)				CONTRACT NO.	72G82			
	PLOT DATE = Mar-27-2014 02:18:52PM	DATE -	REVISED -		*** D6 CABLE/GUARDRAIL 2015 ***								



**SHOULDER WIDENING TRANSITION
FOR FLARED TERMINAL**



SECTION B-B
(End section omitted for clarity.)

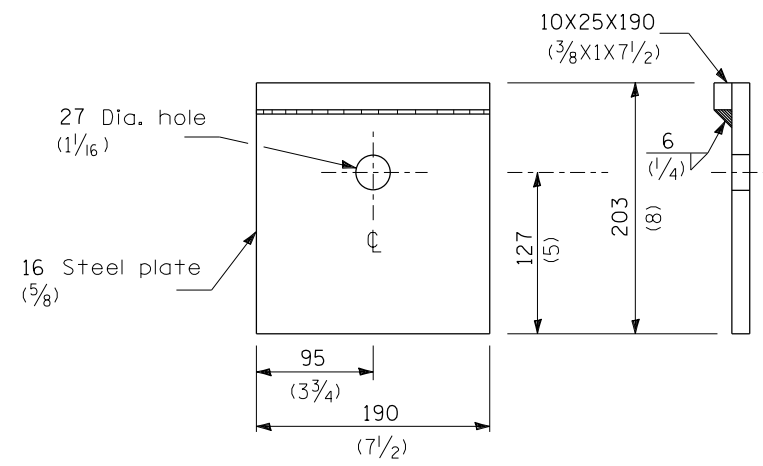
FILE NAME =	USER NAME = sparksgw	DESIGNED -	REVISED -
c:\pwork\work\pwork\sparksgw\0381776\0672082-Pre-MGS HWAY_Standard 630301-03.dgn		DRAWN -	REVISED -
Default	PLOT SCALE = 26.0000' / in.	CHECKED -	REVISED -
	PLOT DATE = Mar-27-2014 02:18:52PM	DATE -	REVISED -

**STATE OF ILLINOIS
DEPARTMENT OF TRANSPORTATION**

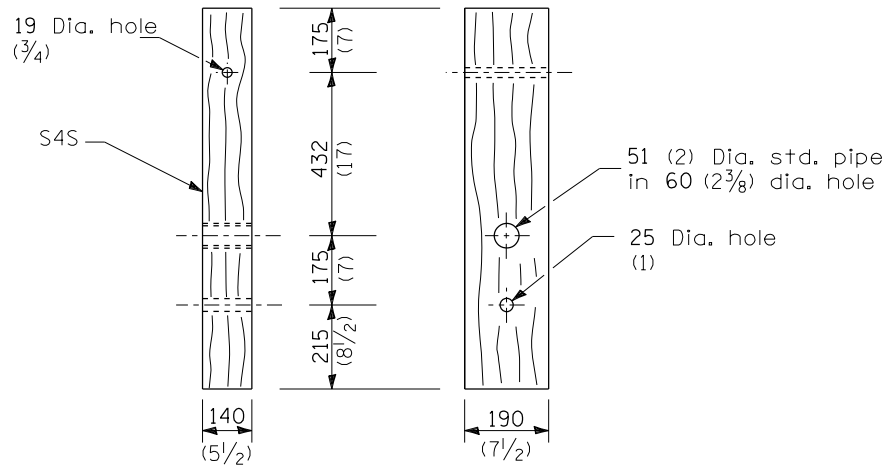
**PRE-MGS HIGHWAY STANDARD 630301-03
SHOULDER WID. FOR TYPE 1 (SPL) GUARDRAIL TERMINAL
EFFECTIVE 4-1-06**

SCALE: SHEET OF SHEETS STA. TO STA. (SHEET 2 OF 2)

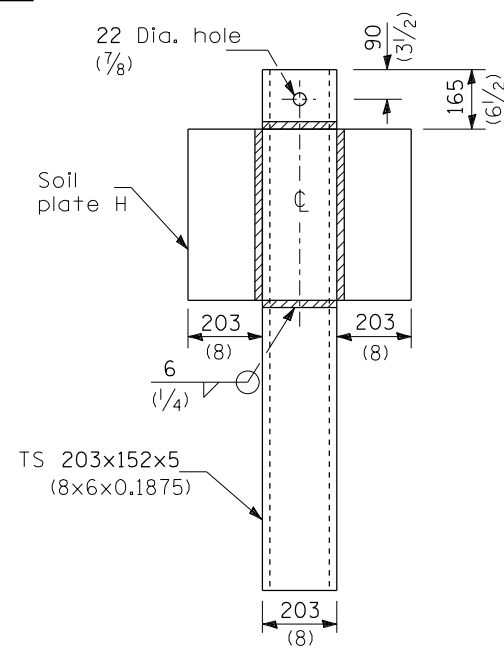
F.A. RTE.	SECTION	COUNTY	TOTAL SHEETS	SHEET NO.
VA	17	11
CONTRACT NO. 72082			ILLINOIS FED. AID PROJECT	



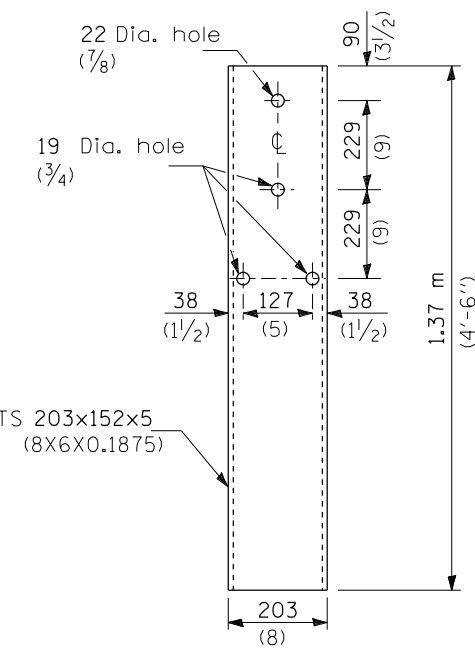
BEARING PLATE K



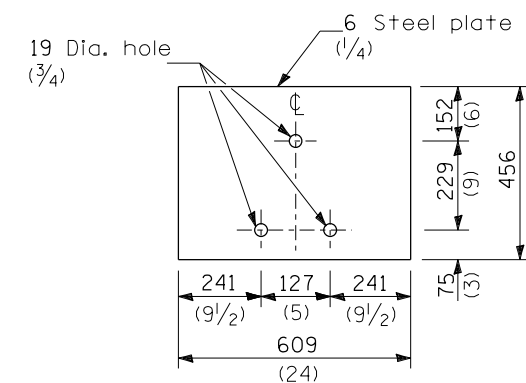
WOOD POST



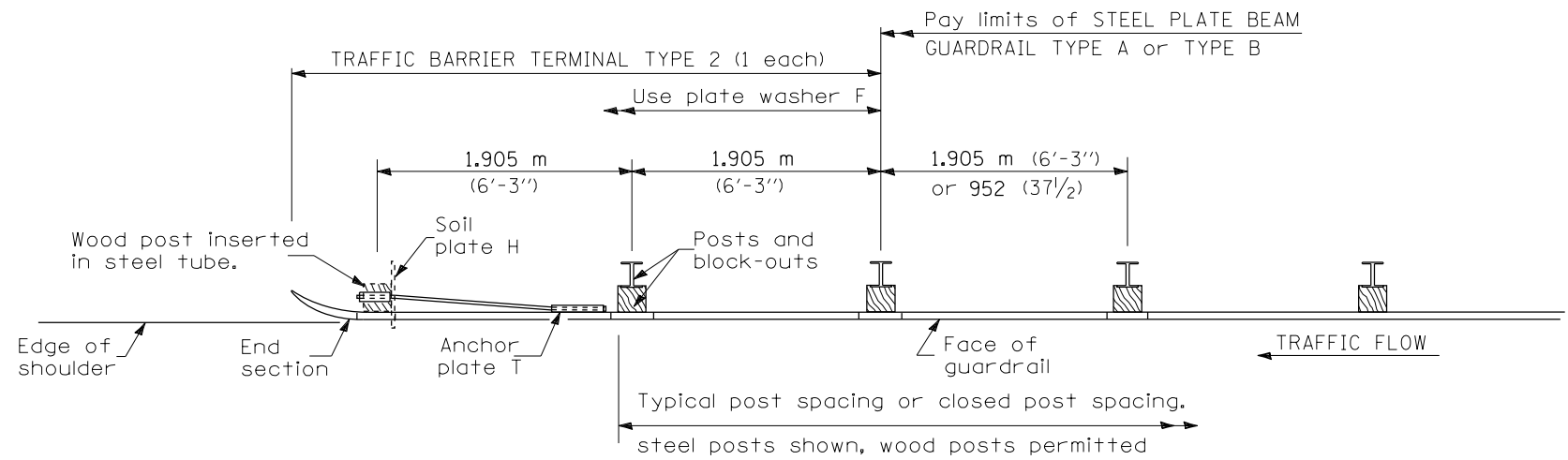
ALTERNATE SOIL PLATE CONNECTION



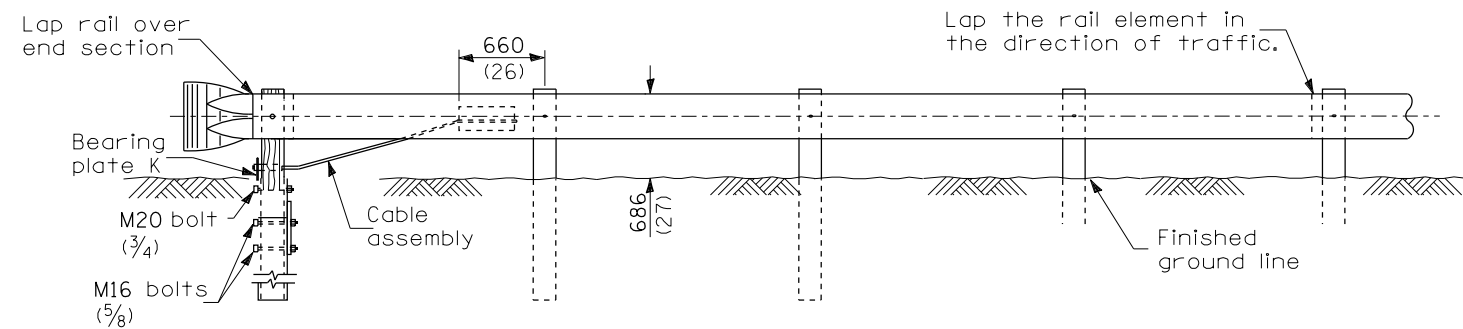
STEEL TUBE



SOIL PLATE H



PLAN



ELEVATION

GENERAL NOTES

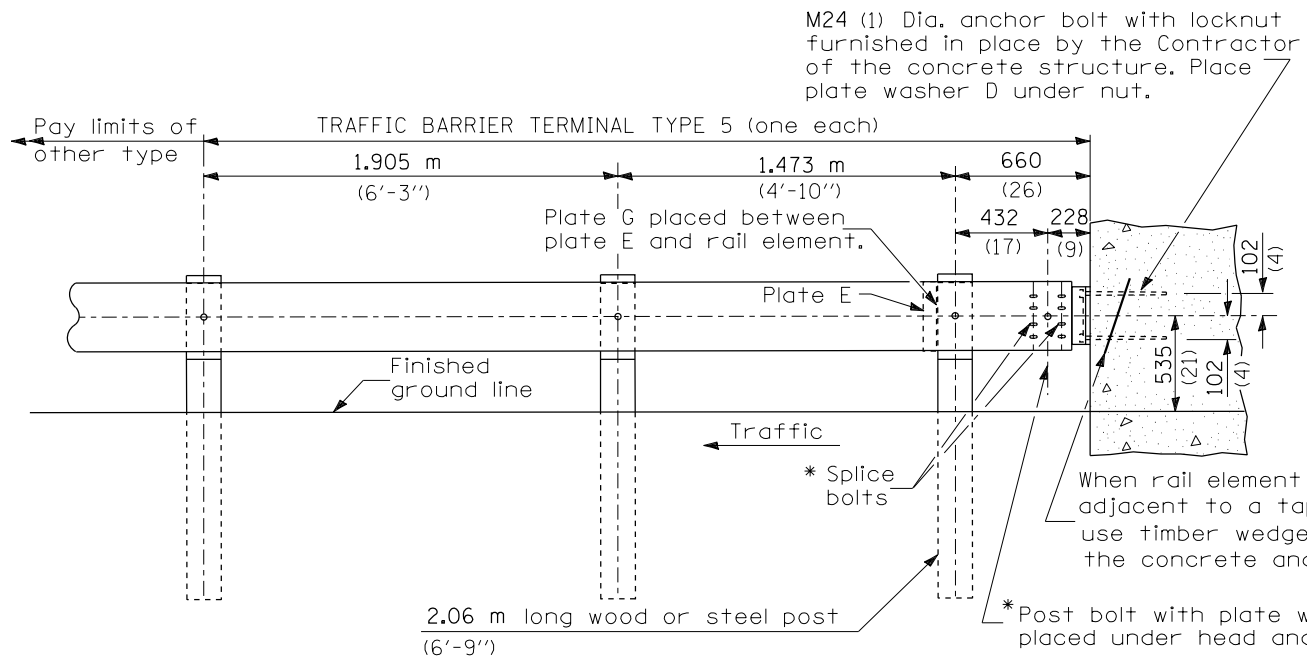
See Standard 630001 for details of guardrail not shown.

Use plate washer F at all posts.

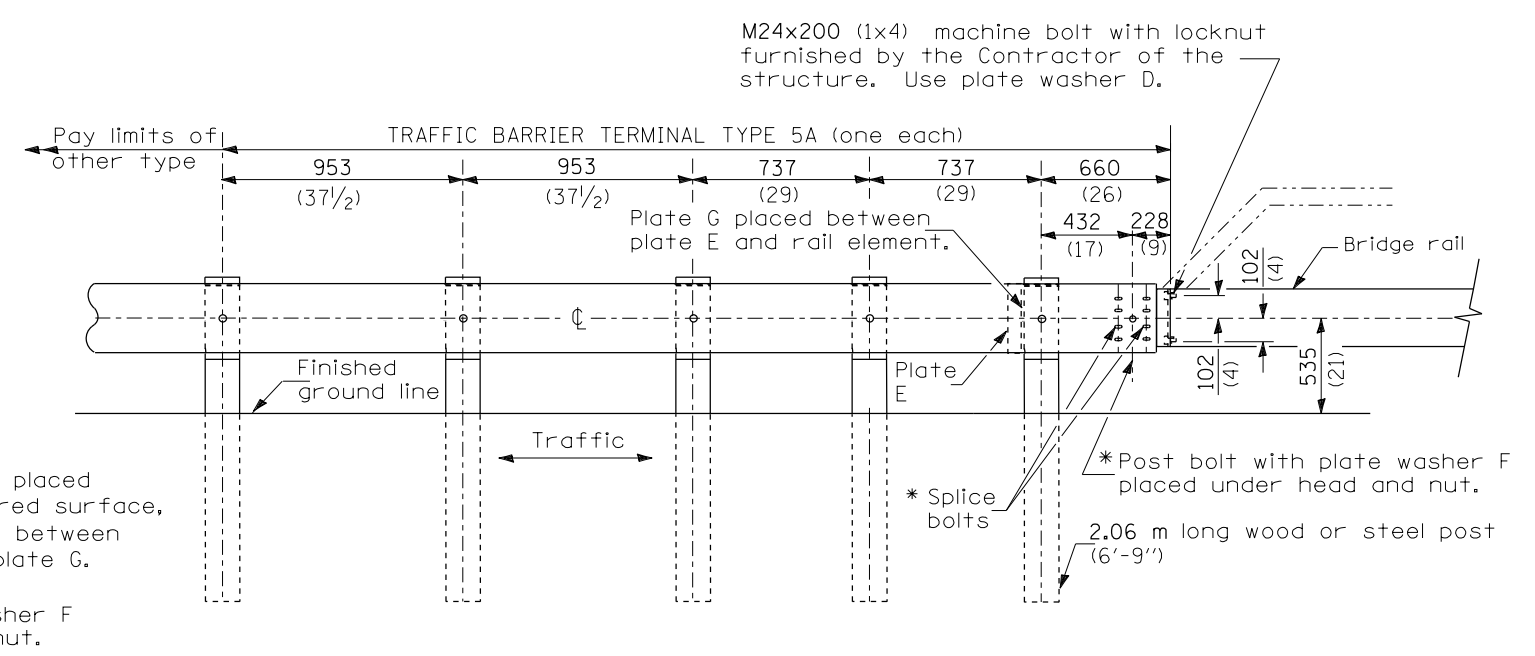
The bearing plate K shall be held in position by (2) two eight penny nails driven into the post and bent over the top of the plate.

All dimensions are in millimeters (inches) unless otherwise shown.

FILE NAME =	USER NAME = sparksgw	DESIGNED -	REVISED -	STATE OF ILLINOIS DEPARTMENT OF TRANSPORTATION	PRE-MGS HIGHWAY STANDARD 631011-02 TRAFFIC BARRIER TERMINAL TYPE 2 EFFECTIVE 4-1-06	F.A. RTE.	SECTION	COUNTY	TOTAL SHEETS	SHEET NO.
Default	2082_Pre-MGS Highway Standard 631011-02.dgn	DRAWN -	REVISED -			VA	***	**	17	12
	PLOT SCALE = 26.0000' / in.	CHECKED -	REVISED -			CONTRACT NO. 72G82				
	PLOT DATE = Mar-27-2014 02:18:53PM	DATE -	REVISED -			ILLINOIS FED. AID PROJECT				



TYPE 5 - CONCRETE BRIDGE PARAPET



TYPE 5A - STEEL BRIDGE RAIL

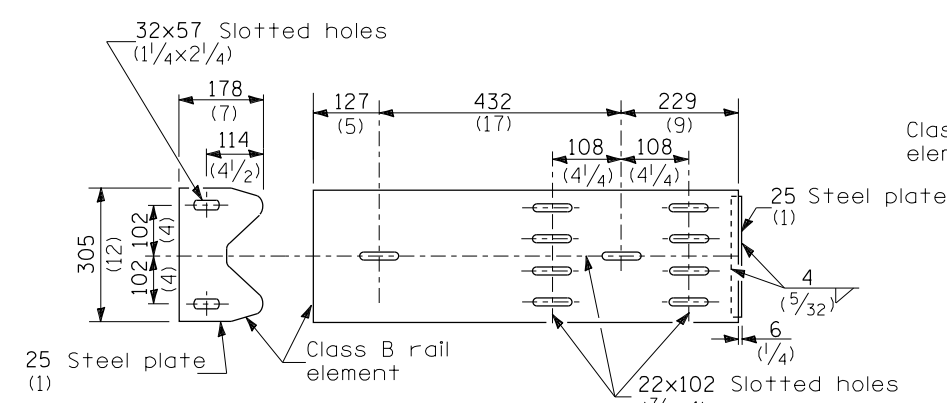


PLATE G

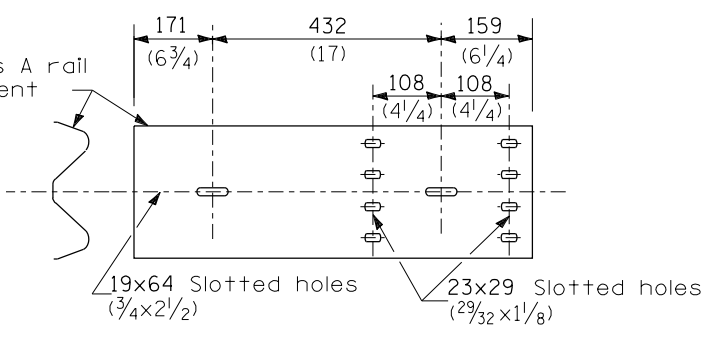
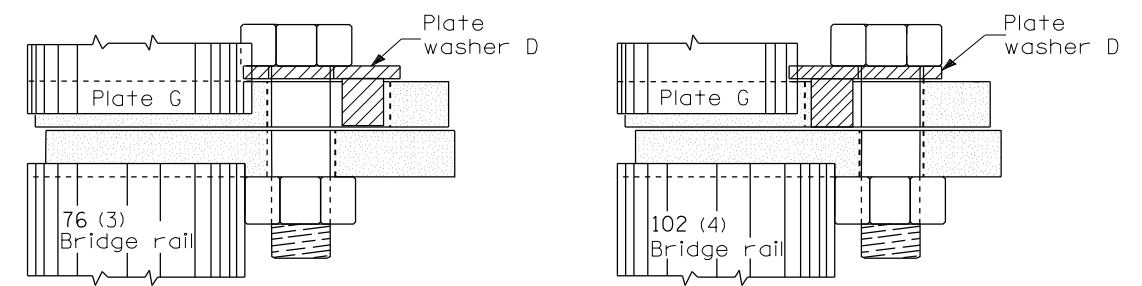


PLATE E



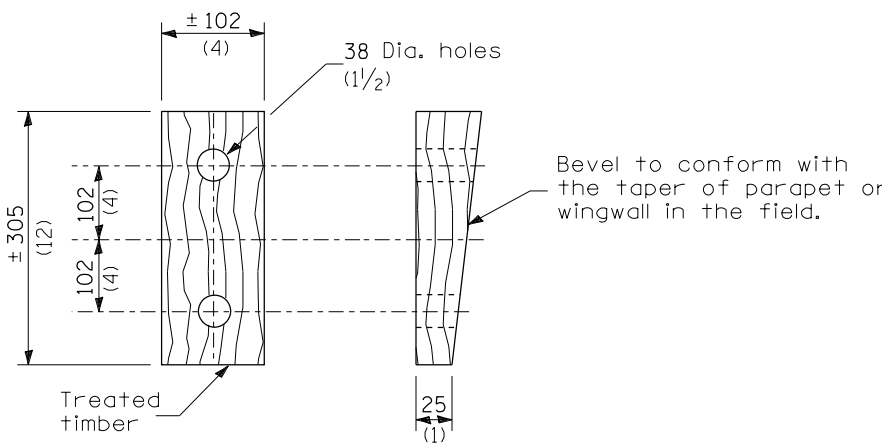
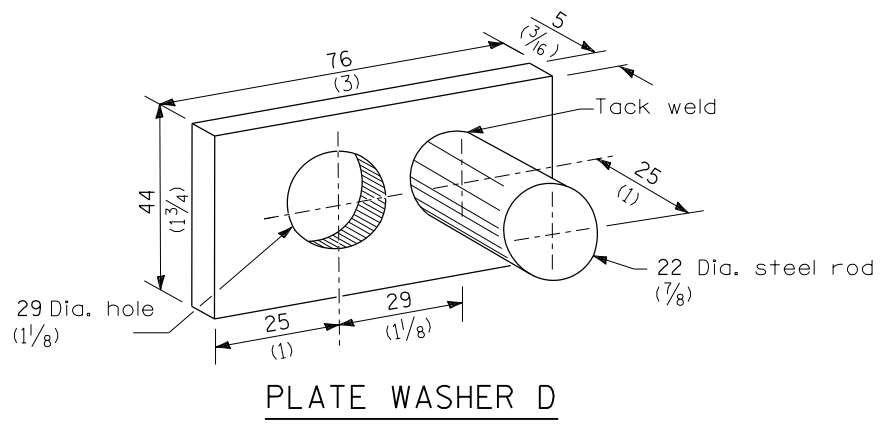
GENERAL NOTES

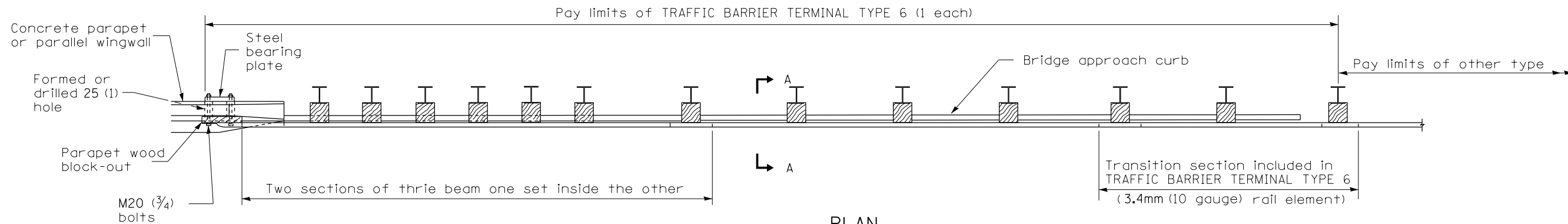
Install plate washer D so that the 25 mm (1") projection fills the remainder of the slotted holes in the 25 mm (1") end plate on plate G after the M24 (1") dia. bolts are in place.

* Bolts shall be provided with locknut or double nut and shall be tightened only to a point that will allow plate G to be free to move when an expansion joint exists below the connector.

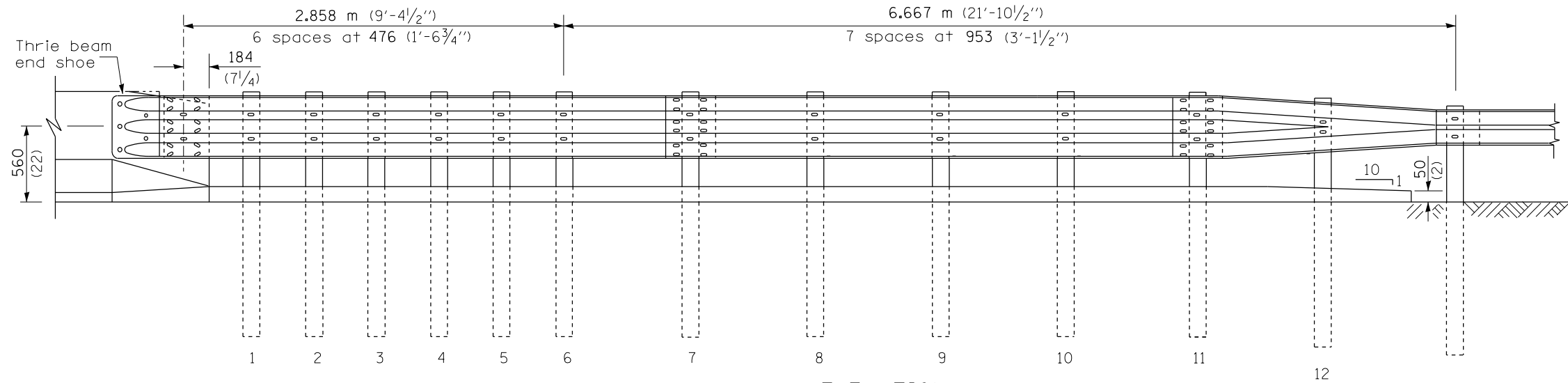
See Standard 630001 for details of guardrail not shown.

All dimensions are in millimeters (inches) unless otherwise shown.

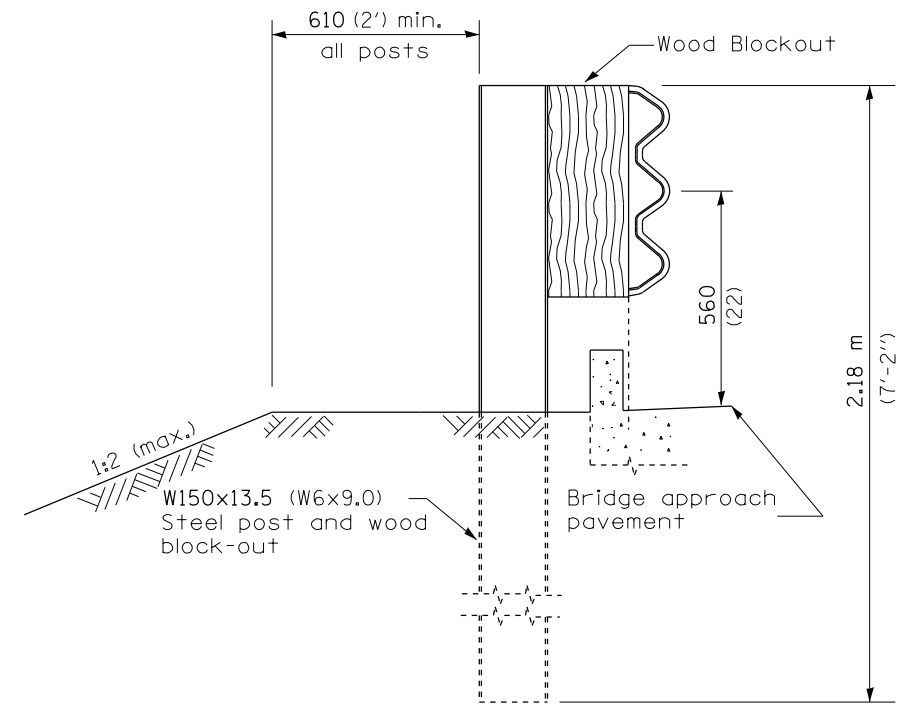




PLAN



ELEVATION



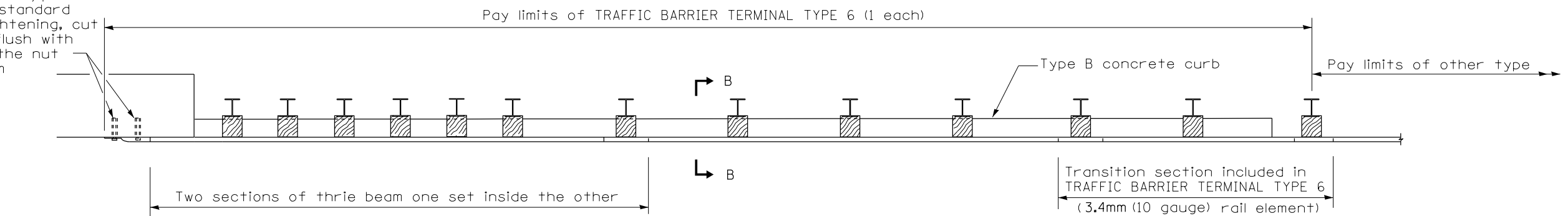
SECTION A-A

GENERAL NOTES

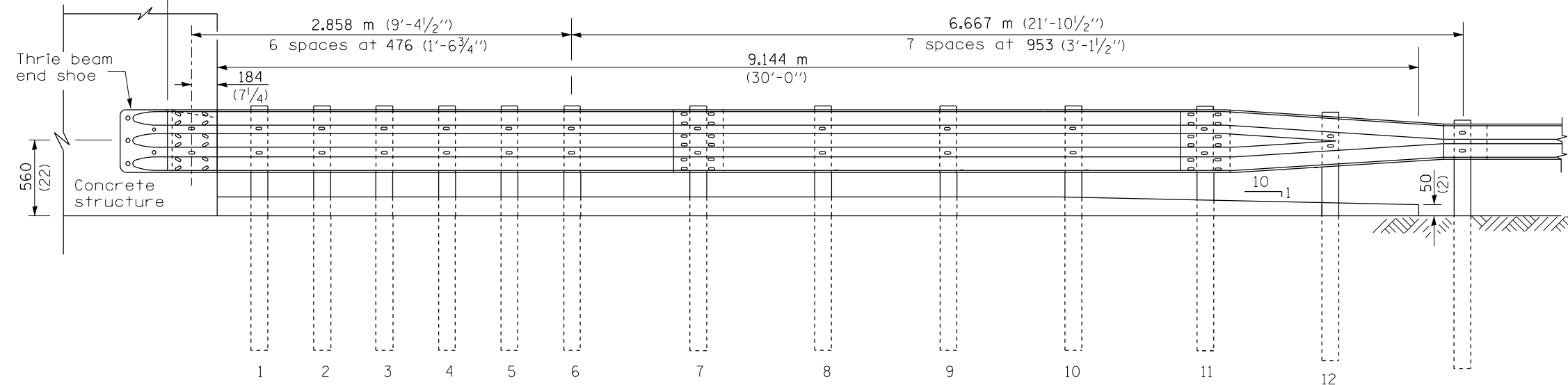
- See Standard 630001 for details of guardrail not shown.
- Thrie beam rail shall be bolted to block-out at all posts.
- See Standard 420401 for details of bridge approach pavement.
- All slope ratios are expressed as units of vertical displacement to units of horizontal displacement (V:H).
- All dimensions are in millimeters (inches) unless otherwise shown.

FILE NAME =	USER NAME = sparksgw	DESIGNED -	REVISED -	STATE OF ILLINOIS DEPARTMENT OF TRANSPORTATION	PRE-MGS HIGHWAY STANDARD 631031-05 TRAFFIC BARRIER TERMINAL, TYPE 6 EFFECTIVE 4-1-06 (SHEET 1 OF 3)	F.A. RTE.	SECTION	COUNTY	TOTAL SHEETS	SHEET NO.	
Default	ct:\pw\work\p\id\sparksgw\10381776\0672082-Pre-MGS Highway Standard 631031-05.dgn	DRAWN -	REVISED -			VA	17	14	
	PLOT SCALE = 26.0000' / in.	CHECKED -	REVISED -			CONTRACT NO. 72G82		ILLINOIS FED. AID PROJECT			
	PLOT DATE = Mar-27-2014 02:18:56PM	DATE -	REVISED -			SCALE: SHEET OF SHEETS STA. TO STA.		*** D6 CABLE/GUARDRAIL 2015 ***			

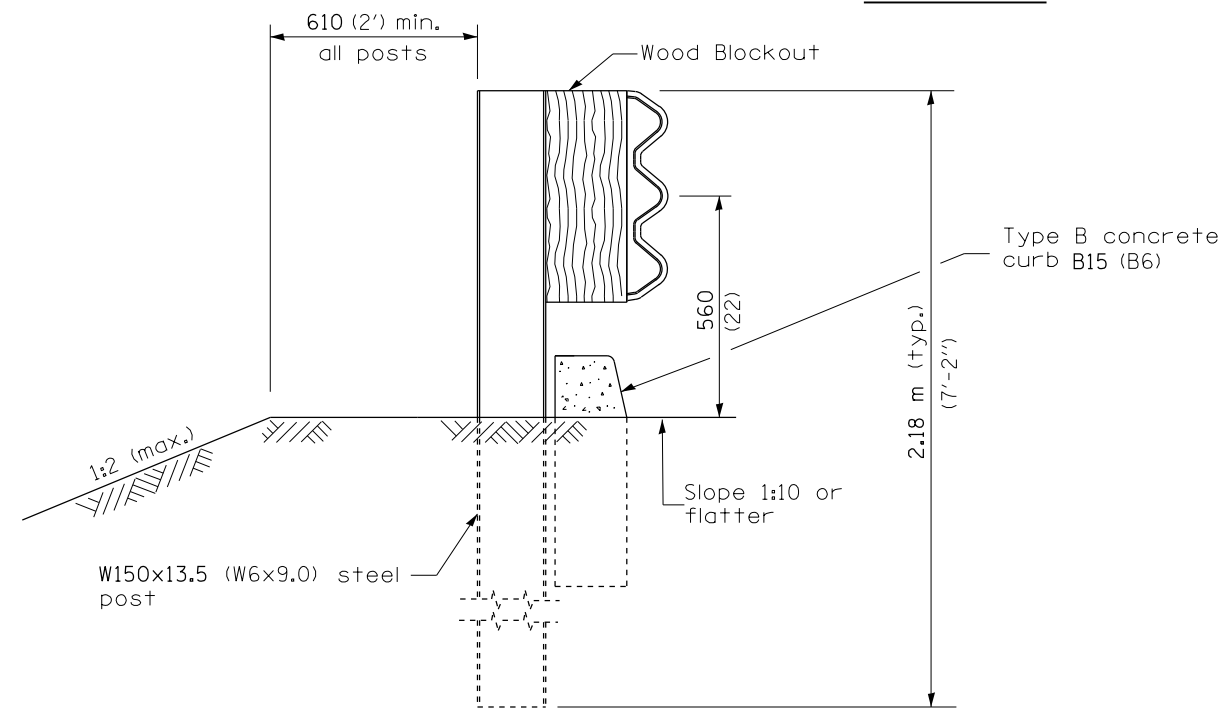
5 Epoxy grouted M20 (3/4") anchor bolts with standard washers. After tightening, cut the anchor bolts flush with nuts, and damage the nut to prevent it from loosening.



PLAN



ELEVATION



SECTION B-B

FILE NAME =	USER NAME = sparksgw	DESIGNED -	REVISED -
ct:\pw\work\p\idot\sparksgw\10381776\0672082-Pre-MGS Highway Standard 631031-05.dgn		DRAWN -	REVISED -
Default	PLOT SCALE = 26.0000' / in.	CHECKED -	REVISED -
	PLOT DATE = Mar-27-2014 02:18:56PM	DATE -	REVISED -

STATE OF ILLINOIS
DEPARTMENT OF TRANSPORTATION

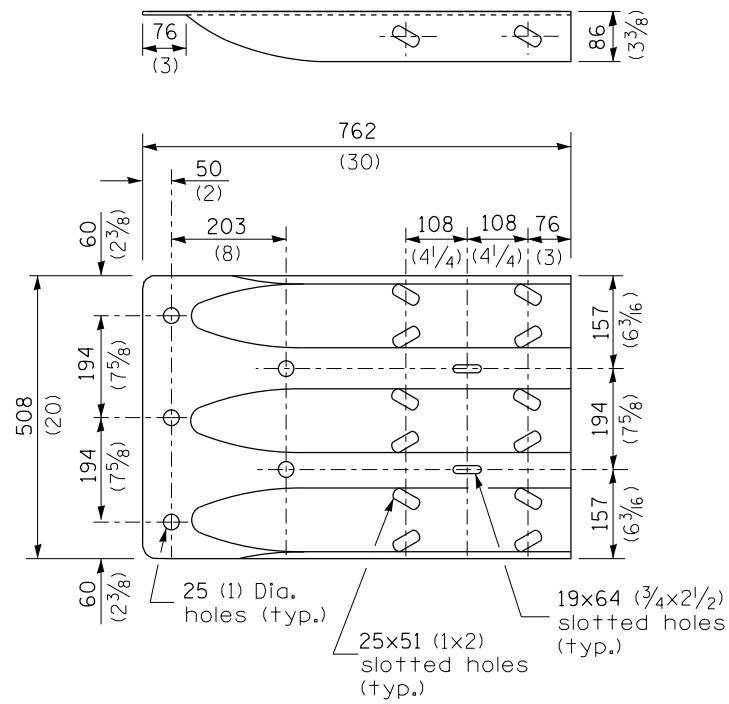
PRE-MGS HIGHWAY STANDARD 631031-05
TRAFFIC BARRIER TERMINAL, TYPE 6
EFFECTIVE 4-1-06 (SHEET 2 OF 3)

F.A. RTE.	SECTION	COUNTY	TOTAL SHEETS	SHEET NO.
VA	***	**	17	15
CONTRACT NO. 72G82			ILLINOIS FED. AID PROJECT	

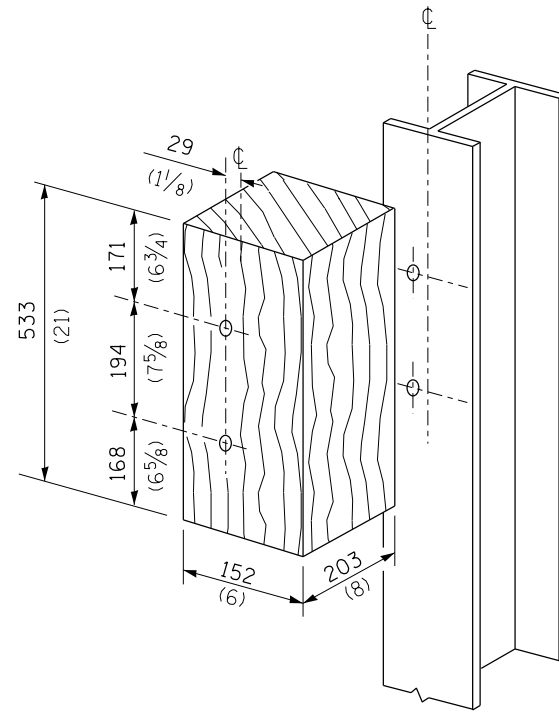
SCALE: SHEET OF SHEETS STA. TO STA.

*** D6 CABLE/GUARDRAIL 2015

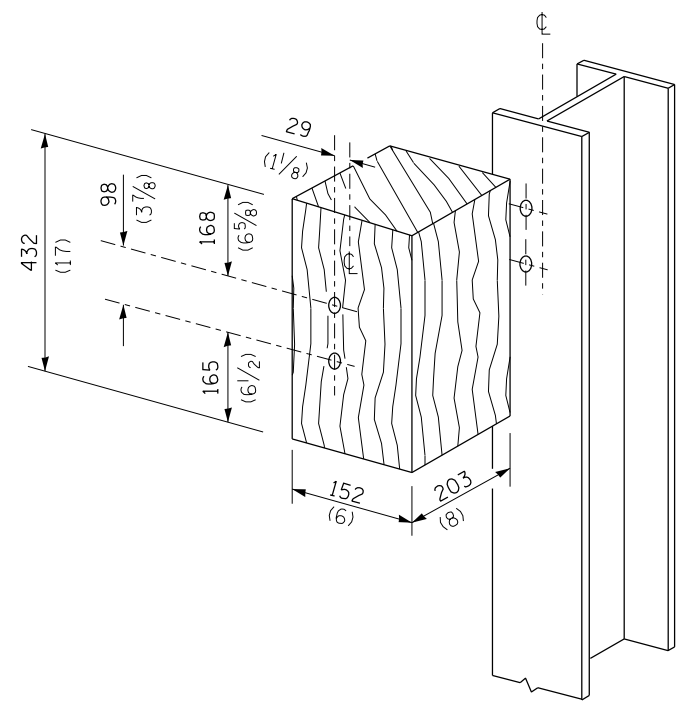
** VAR



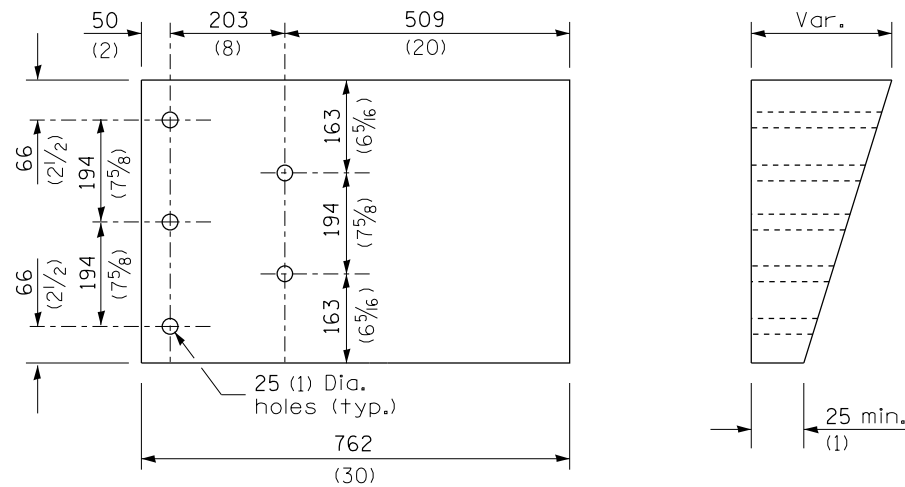
THRIE BEAM END SHOE DETAIL



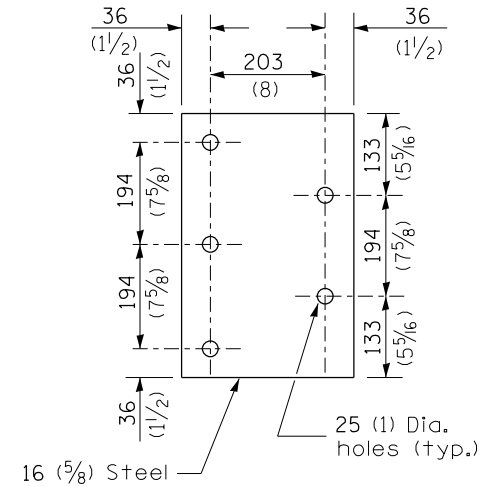
POSTS 1-11 WOOD BLOCKOUT DETAIL



POST 12 WOOD BLOCKOUT DETAIL



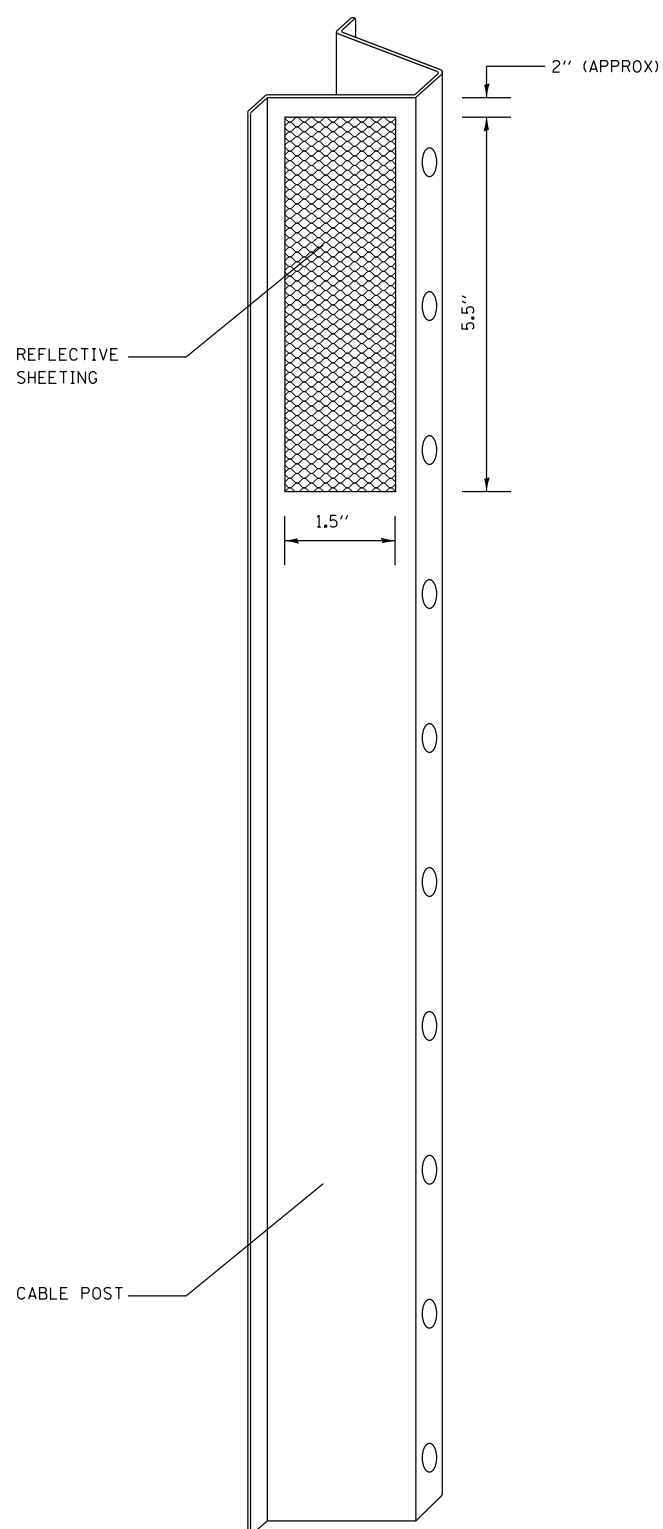
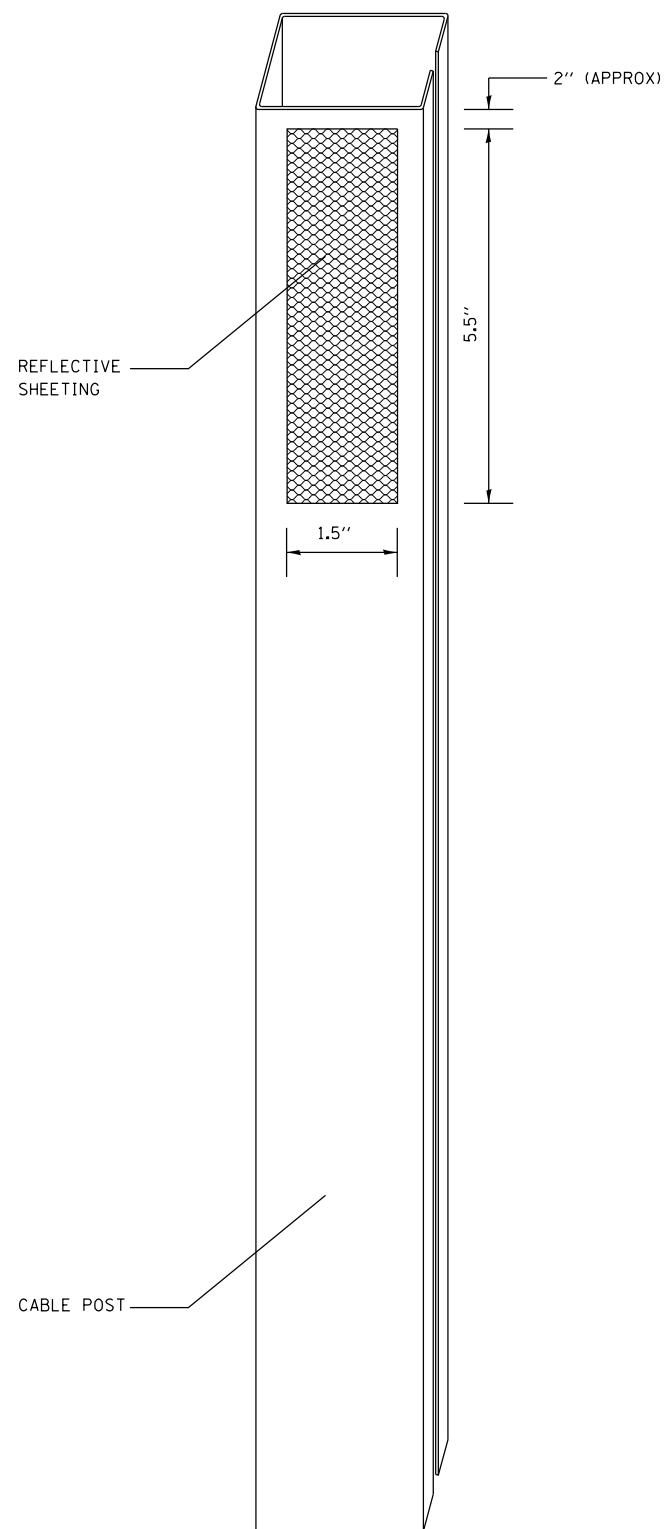
PARAPET WOOD BLOCK-OUT DETAIL



PARAPET STEEL BEARING PLATE DETAIL

(5 each individual 125x125x16 (5x5x5/8) steel plates with centered 25 (1) holes may be substituted for the plate shown.)

FILE NAME =	USER NAME = sparksgw	DESIGNED -	REVISED -	STATE OF ILLINOIS DEPARTMENT OF TRANSPORTATION	PRE-MGS HIGHWAY STANDARD 631031-05 TRAFFIC BARRIER TERMINAL, TYPE 6 EFFECTIVE 4-1-06 (SHEET 3 OF 3)	F.A. RTE.	SECTION	COUNTY	TOTAL SHEETS	SHEET NO.	
Default	2082-Pre-MGS Highway Standard 631031-05.dgn	DRAWN -	REVISED -			VA	17	16	
	PLOT SCALE = 26.0000' / in.	CHECKED -	REVISED -			SCALE: SHEET OF SHEETS STA. TO STA.		CONTRACT NO. 72G82		ILLINOIS FED. AID PROJECT	
	PLOT DATE = Mar-27-2014 02:18:56PM	DATE -	REVISED -					*** D6 CABLE/GUARDRAIL 2015		** VAR	



NOTES:

MATERIAL: THE MATERIAL SHALL BE IN ACCORDANCE WITH SECTION 1090 AND 1091 OF THE STANDARD SPECIFICATIONS.

CONSTRUCTION REQUIREMENTS: THE REFLECTIVE SHEETING SHALL BE INSTALLED DIRECTLY ON THE CABLE POSTS. THE REFLECTIVE SHEETING SHALL BE INSTALLED AS SHOWN IN THE PLANS, ON EVERY OTHER POST (IN ORDER TO PROVIDE A SPACING OF 40'). THE SURFACE OF THE POST SHALL BE CLEANED OF ALL CONTAMINANTS PRIOR TO THE INSTALLATION OF THE REFLECTIVE SHEETING. THE SURFACE SHALL BE CLEANED USING A 5-8 PERCENT PHOSPHORIC ACID SOLUTION AND RINSED WITH CLEAN WATER OR AS RECOMMENDED BY THE MANUFACTURER OF THE REFLECTIVE SHEETING AND AS APPROVED BY THE ENGINEER.

BASIS OF PAYMENT: THIS WORK WILL BE PAID FOR AT THE CONTRACT UNIT PRICE EACH FOR CABLE GUARD MARKER.

FILE NAME =	USER NAME = sparksgw	DESIGNED -	REVISED -
c:\pwork\work\pwork\sparksgw\0381776\0672082-sht-details.dgn		DRAWN -	REVISED -
Default	PLOT SCALE = 100.0000' / 1in.	CHECKED -	REVISED -
	PLOT DATE = Mar-27-2014 02:18:58PM	DATE -	REVISED -

**STATE OF ILLINOIS
DEPARTMENT OF TRANSPORTATION**

CABLE GUARD MARKER DETAIL

SCALE: SHEET OF SHEETS STA. TO STA.

F.A. RTE.	SECTION	COUNTY	TOTAL SHEETS	SHEET NO.
VA	***	**	17	17
			CONTRACT NO. 72G82	