

06-13-14 LETTING ITEM 115

STATE OF ILLINOIS
DEPARTMENT OF TRANSPORTATION
DIVISION OF HIGHWAYS
PROPOSED
CONTRACT MAINTENANCE

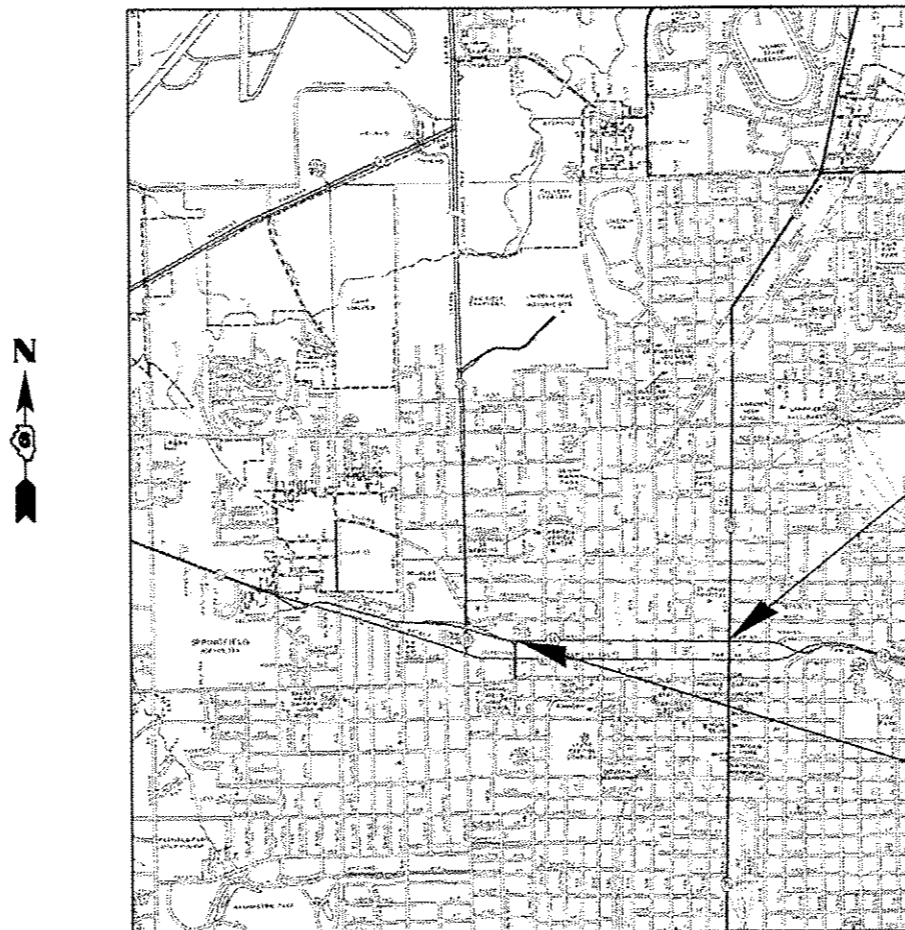
FOR INDEX OF SHEETS, SEE SHEET NO. 2

FAP 67 (IL 97, MADISON ST.)
SECTION (107Z) PATCHING 2014
PROJECT CLASS B PATCHING
SANGAMON COUNTY

F.A.P. RTE.	SECTION	COUNTY	TOTAL SHEETS	SHEET NO.
67	(107Z) PATCHING 2014	SANGAMON	5	1
FED. ROAD DIST. NO.	ILLINOIS	CONTRACT NO.	72G42	



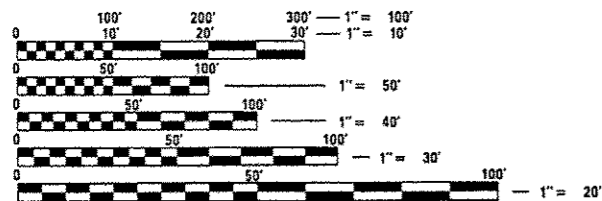
C-96-006-14
R 5 W



END PROJECT
STA. 96 + 50.00

BEGIN PROJECT
STA. 55 + 25.00

ADT = 15,300
SU = 950
MU = 425



FULL SIZE PLANS HAVE BEEN PREPARED USING STANDARD ENGINEERING SCALES. REDUCED SIZED PLANS WILL NOT CONFORM TO STANDARD SCALES. IN MAKING MEASUREMENTS ON REDUCED PLANS, THE ABOVE SCALES MAY BE USED.

J.U.L.I.E.
JOINT UTILITY LOCATION INFORMATION FOR EXCAVATION
1-800-892-0123
OR 811

PLAN AND CONTRACT TECHNICIAN
TIMOTHY SHARP (217)782-7743

CONTRACT NO. 72G42

GROSS LENGTH = 4,857.60 FT. = 0.920 MILE

STATE OF ILLINOIS
DEPARTMENT OF TRANSPORTATION
DIVISION OF HIGHWAYS

SUBMITTED March 24 2014
Boye Zschalig
DEPUTY DIRECTOR OF HIGHWAYS, REGION ENGINEER

May 9 2014
John D. Baranelli P.E.
ENGINEER OF DESIGN AND ENVIRONMENT

May 9 2014
Omer Osman P.E.
DIRECTOR OF HIGHWAYS, CHIEF ENGINEER

**PRINTED BY THE AUTHORITY
OF THE STATE OF ILLINOIS**

INDEX OF SHEETS

1. COVER
2. INDEX OF SHEETS, GENERAL NOTES, AND HIGHWAY STANDARDS
3. SUMMARY OF QUANTITIES
4. PLAN
5. TYPICAL SECTIONS

HIGHWAY STANDARDS

- 442101-07 CLASS B PATCHES
 701601-09 URBAN LANE CLOSURE, MULTILANE, 1W OR 2W WITH NONTRANSVERSABLE MEDIAN
 701901-03 TRAFFIC CONTROL DEVICES

GENERAL NOTES

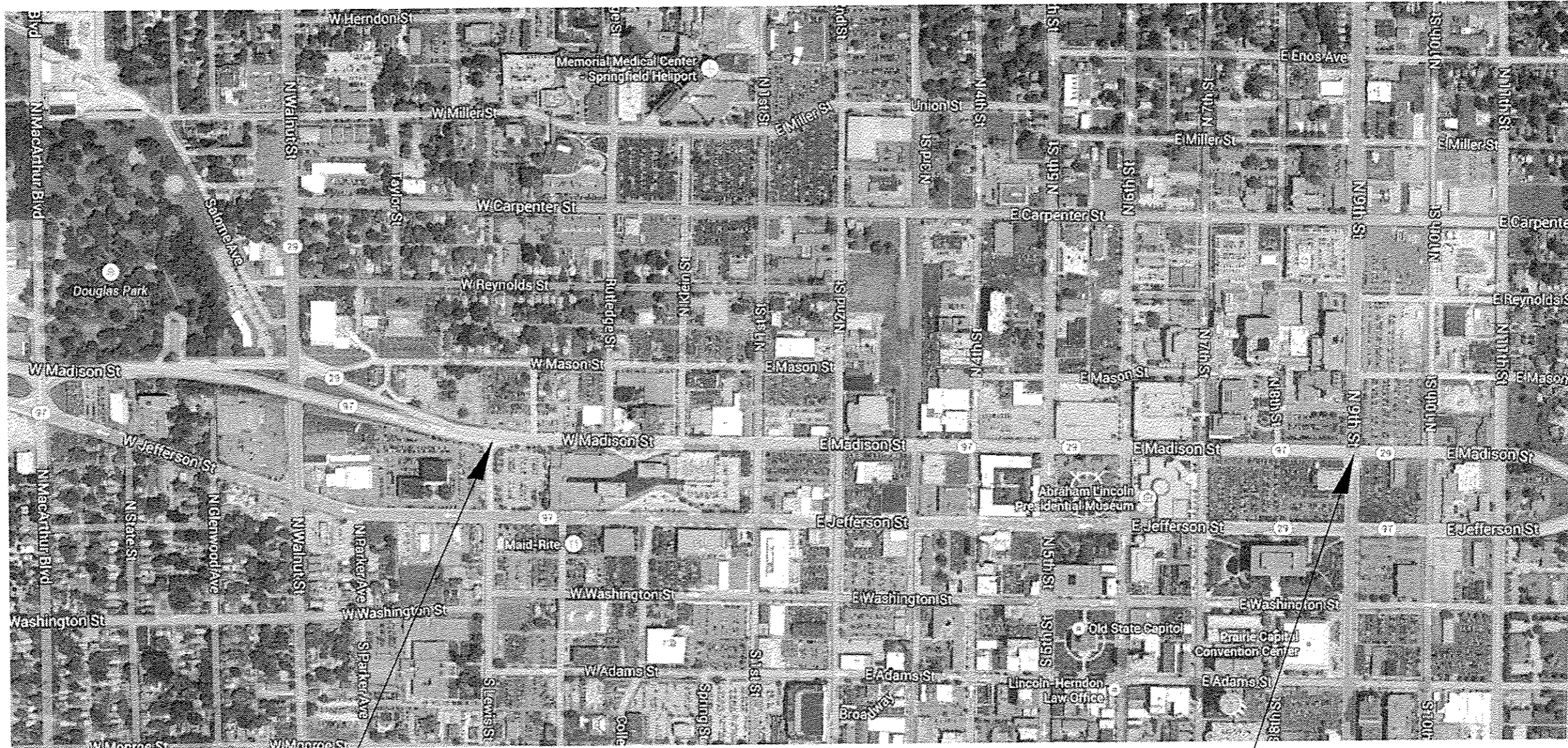
1. ANY REFERENCE TO THE STANDARDS THROUGHOUT THE PLANS SHALL BE INTERPRETED TO BE THE LATEST STANDARDS OF THE DEPARTMENT AS INCLUDED IN THE PLANS.
2. ALL PATCHES WILL BE IN THE CENTER 2 LANES.

STATE OF ILLINOIS DEPARTMENT OF TRANSPORTATION DIVISION OF HIGHWAYS DISTRICT 6	
EXAMINED <u>March 21</u> 20 <u>14</u> <i>Michael P. ...</i> for Roger L. Driskoll ENGINEER OF OPERATIONS	
EXAMINED <u>MARCH 4</u> 20 <u>14</u> <i>Tommy ...</i> ENGINEER OF PROJECT IMPLEMENTATION	
EXAMINED <u>March 6</u> 20 <u>14</u> <i>ARMJ</i> ENGINEER OF PROGRAM DEVELOPMENT	

FILE NAME *	USER NAME * sharptd	DESIGNED -	REVISED -	STATE OF ILLINOIS DEPARTMENT OF TRANSPORTATION	INDEX OF SHEETS, HIGHWAY STANDARDS AND GENERAL NOTES	F.A.P. RTE.	SECTION	COUNTY	TOTAL SHEETS	SHEET NO.
ci:\pwork\pwork\sharptd\0357782\0672542-shi-gannote.dgn		DRAWN -	REVISED -			67	(1072) PATCHING 2014	SANGAMON	5	2
		CHECKED -	REVISED -			CONTRACT NO. 72G42		ILLINOIS FED. AID PROJECT		
Default	PLOT DATE * Mar-03-2014 07:37:06AM	DATE -	REVISED -	SCALE:	SHEET OF SHEETS	STA.	TO STA.			

CODE NO.	ITEM	UNIT	CONSTR. CODE	
			URBAN	ROADWAY
			TOTAL QUANTITY	0005 S. N.
44200956	CLASS B PATCHES, TYPE II, 9 INCH	SO YD	360	360
44201299	DOWEL BARS 1-1/2"	EACH	880	880
44213200	SAW CUTS	FOOT	2,394	2,394
67100100	MOBILIZATION	L SUM	1	1
70102630	TRAFFIC CONTROL AND PROTECTION, STANDARD 701601	L SUM	1	1
70106800	CHANGEABLE MESSAGE SIGN	CAL MO	1	1
70200100	NIGHTTIME WORK ZONE LIGHTING	L SUM	1	1
Z0048665	RAILROAD PROTECTIVE LIABILITY INSURANCE	L SUM	1	1

8



BEGIN PROJECT
STA. 55+25

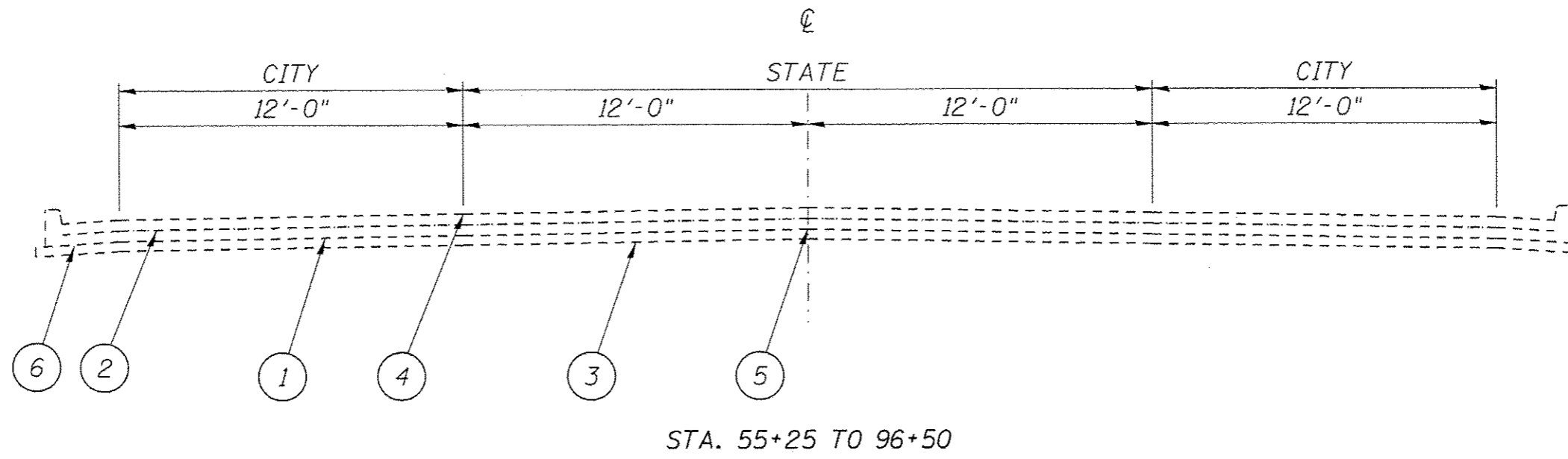
END PROJECT
STA. 96+50

FILE NAME *	USER NAME * shorptd	DESIGNED -	REVISED -
ci:\pov\work\p1dot\shorptd\0357782\0672	42-sh1-plan.dgn	DRAWN -	REVISED -
Defaults	PLOT SCALE * 1/8.000000 "/td> <td>CHECKED -</td> <td>REVISED -</td>	CHECKED -	REVISED -
	PLOT DATE * Feb-26-2014 05:51:49AM	DATE -	REVISED -

**STATE OF ILLINOIS
DEPARTMENT OF TRANSPORTATION**

PLAN	
SCALE:	SHEET - OF - SHEETS STA. TO STA.

F.A.P. RTE.	SECTION	COUNTY	TOTAL SHEETS	SHEET NO.
67	(1072) PATCHING 2014	SANGAMON	5	4
CONTRACT NO. 72G42			ILLINOIS FED. AID PROJECT	



LEGEND

- 1- EXIST. P.C.C. PAVEMENT 9"
- 2- EXIST. PAVEMENT FABRIC, 100% DOWEL BARS
- 3- EXIST. SUBBASE GRANULAR MATERIAL, TYPE A 4"
- 4- SAWED LONGITUDINAL JOINT
- 5- EXIST. KEYED LONGITUDINAL CONSTRUCTION JOINT
- 6- EXIST. CONCRETE CURB AND GUTTER, TYPE B-6.24

FILE NAME *	USER NAME * shorptd	DESIGNED -	REVISED -	STATE OF ILLINOIS DEPARTMENT OF TRANSPORTATION	TYPICAL SECTION	F.A.P. RTE.	SECTION	COUNTY	TOTAL SHEETS	SHEET NO.
o:\pwwork\pwwork\shorptd\8357782\067242-sht-typical.dgn	DRAWN -	REVISED -	67			(1072) PATCHING 2014	SANGAMON	5	5	
PLOT SCALE * 5.0000 1/16 in.	CHECKED -	REVISED -	CONTRACT NO. 72642							
SHT_PLAN	DATE -	REVISED -	ILLINOIS FED. AID PROJECT							