

STATE OF ILLINOIS
DEPARTMENT OF TRANSPORTATION
DIVISION OF HIGHWAYS

**PROPOSED
HIGHWAY PLANS**

F.A.I. ROUTE 39 (I-39)
SECTION 57(2,3)R
PROJECT ACNHPP-0039 (031)
RUBBLIZATION / OVERLAY
MCLEAN COUNTY

C-95-014-13
I-55 TO SIX MILE CREEK SW OF HUDSON

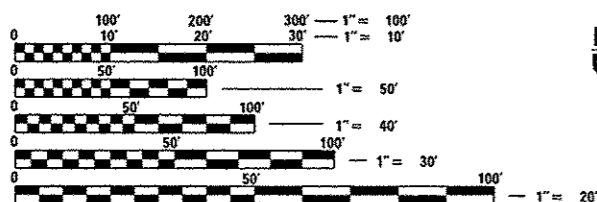
F.A.I. RTE.	SECTION	COUNTY	TOTAL SHEETS	SHEET NO.
39	57(2,3)R	McLean	214	1
		ILLINOIS	CONTRACT NO. 70A28	

FOR INDEX OF SHEETS, SEE SHEET NO. 2
FOR SUMMARY OF QUANTITIES, SEE SHEET NO. 7 THROUGH 13

CURRENT TRAFFIC DATA				
	LEG "A"	LEG "B"	LEG "C"	
2013 ADT	12,800	16,300	18,500	
P.U. %	54.4	63.5	66.0	
S.U. %	6.4	6.4	5.9	
M.U. %	39.2	30.1	28.1	

LEG "A" IS FROM I-55 TO THE I-39 SB TO I-55 NB RAMP IN NORMAL.
LEG "B" IS FROM THE I-39 SB RAMP IN NORMAL TO US 51 BUS.
LEG "C" IS FROM US 51 BUS TO SIX MILE CREEK.

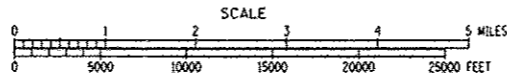
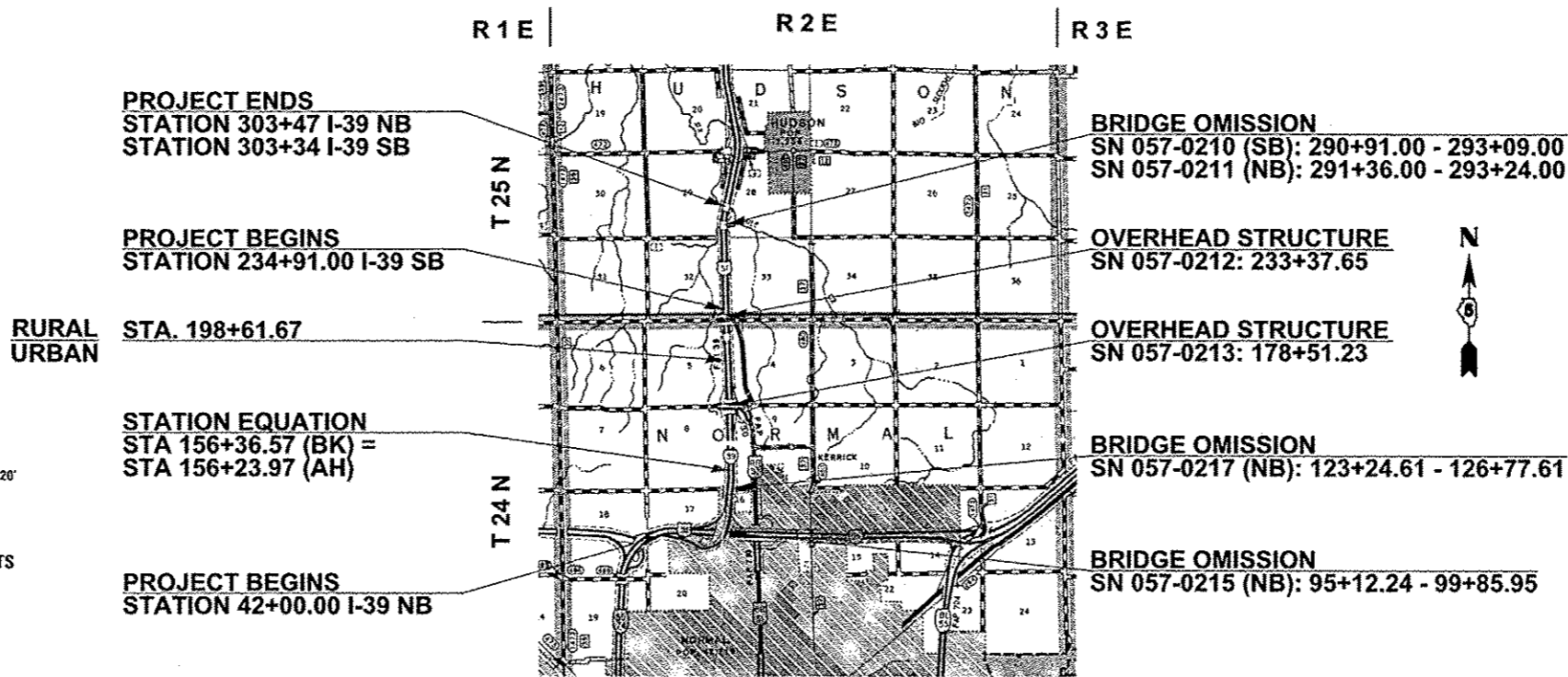
DESIGN DESIGNATION
N/A



FULL SIZE PLANS HAVE BEEN PREPARED USING STANDARD ENGINEERING SCALES. REDUCED SIZED PLANS WILL NOT CONFORM TO STANDARD SCALES. IN MAKING MEASUREMENTS ON REDUCED PLANS, THE ABOVE SCALES MAY BE USED.

J.U.L.I.E.
JOINT UTILITY LOCATION INFORMATION FOR EXCAVATION
1-800-892-0123 (HUDSON & NORMAL TOWNSHIPS)
OR 811

PROJECT ENGINEER: NANCY FASIG
SQUAD LEADER: BRIAN J. HOGAN
DESIGNER: ANDREW BERGAN
(217) 465-4181
CONTRACT NO. 70A28



GROSS LENGTH = 26,159.60 FEET = 4.954 MILES
NET LENGTH = 25,144.89 FEET = 4.762 MILES

STATE OF ILLINOIS
DEPARTMENT OF TRANSPORTATION
DIVISION OF HIGHWAYS

SUBMITTED 3-19-2014

Joseph E. Carone
DEPUTY DIRECTOR OF HIGHWAYS, REGION ENGINEER

May 9 2014
John D. Baranzelli, PE
ENGINEER OF DESIGN AND ENVIRONMENT

May 9 2014
Omar Osman, PE
DIRECTOR OF HIGHWAYS, CHIEF ENGINEER

PRINTED BY THE AUTHORITY
OF THE STATE OF ILLINOIS