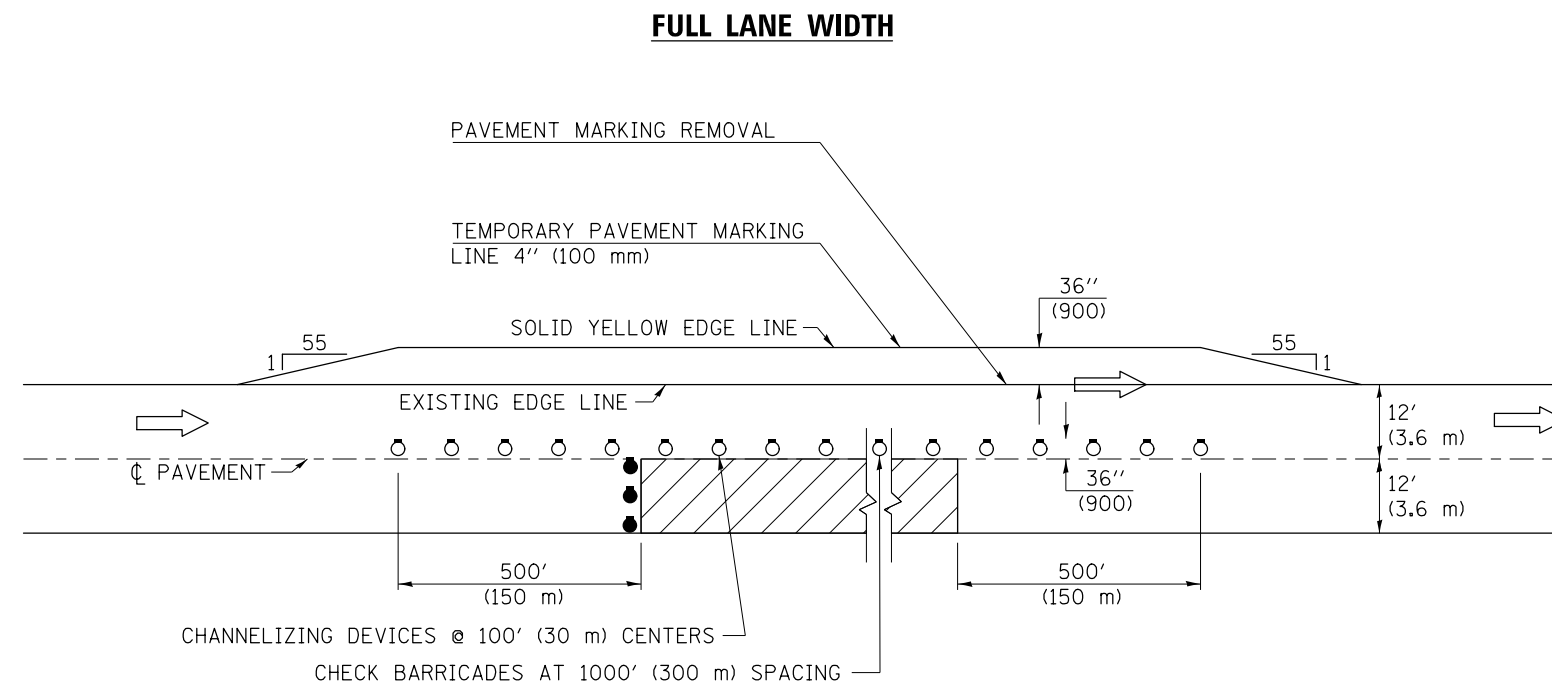


# TYPICAL APPLICATIONS DRIVING LANE WORK



TRAFFIC CONTROL DETAILS NOT SHOWN SHALL BE ACCORDING TO TRAFFIC CONTROL STANDARD 701401.

AT RAMPS, THE OVERLAY WORK AREA SHALL BE STAGED TO COORDINATE WITH STANDARD 701411.

PASSING LANE CLOSURES SHALL BE SIMILAR. THE TEMPORARY PAVEMENT MARKING LINE 4" (100 mm) SHALL BE A SOLID WHITE LINE.

SYMBOLS	
	DIRECTION OF TRAVEL
	WORK AREA
	DRUM WITH STEADY BURN MONODIRECTIONAL LIGHT
	HIGH INTENSITY REFLECTORIZED VERTICAL BARRICADE WITH STEADY BURN MONODIRECTIONAL LIGHT

**Note:** All dimensions are in INCHES (millimeters) unless otherwise shown.

FILE NAME =	USER NAME = bergana.j	DESIGNED -	REVISED - 11/06	<b>STATE OF ILLINOIS DEPARTMENT OF TRANSPORTATION</b>	<b>TRAFFIC CONTROL AND PROTECTION, STANDARD 701401 (SPECIAL)</b>	F.A.I. RTE. =	SECTION	COUNTY	TOTAL SHEETS	SHEET NO.
	et:\pwork\pwork\dot\bergana.j\d0373050\0570A28-SHT-DETAILS.dgn	DRAWN -	REVISED -			39	57(2,3)R	McLean	214	71
	PLOT SCALE = 40.0000' / in.	CHECKED -	REVISED -			CONTRACT NO. 70A28				
	PLOT DATE = 3/18/2014	DATE -	REVISED -			FED. ROAD DIST. NO. ILLINOIS FED. AID PROJECT				
					SCALE:	SHEET 1 OF 1 SHEETS		STA. TO STA.		