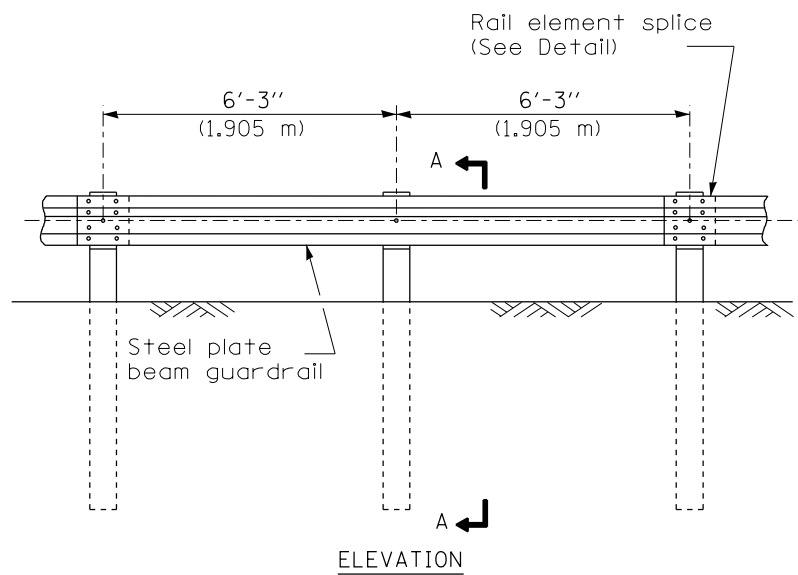
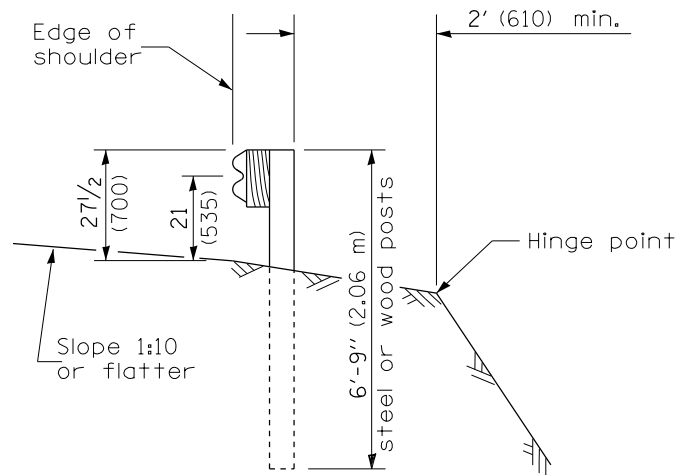


DESIGNER NOTE: Use this CADD Standard when removing and re-erecting existing non-MGS guardrail that was originally installed prior to January 1, 2007 or to replace existing rail to match existing non-MGS rail. Note this is removing and re-erecting so the 27 1/2" height is maintained. If installing the new style MGS guardrail use the State Standard.

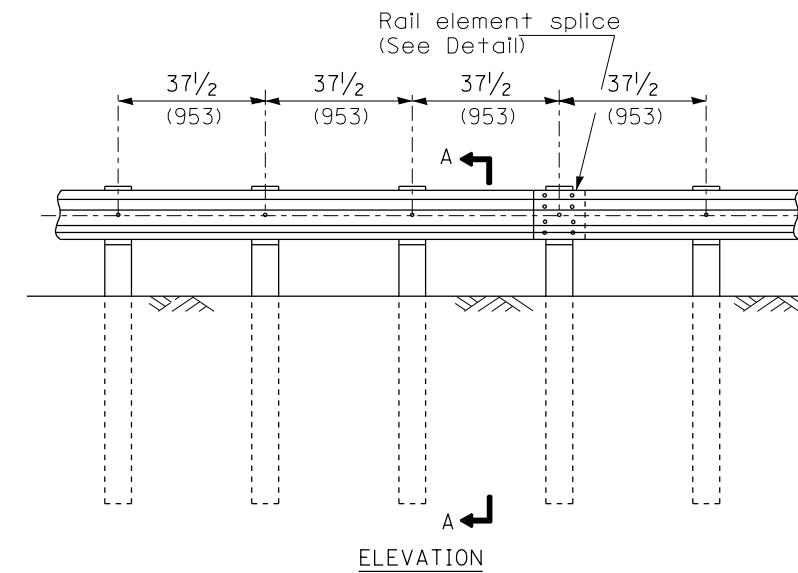


TYPE A

6'-3" (1.905 m) Typical post spacing

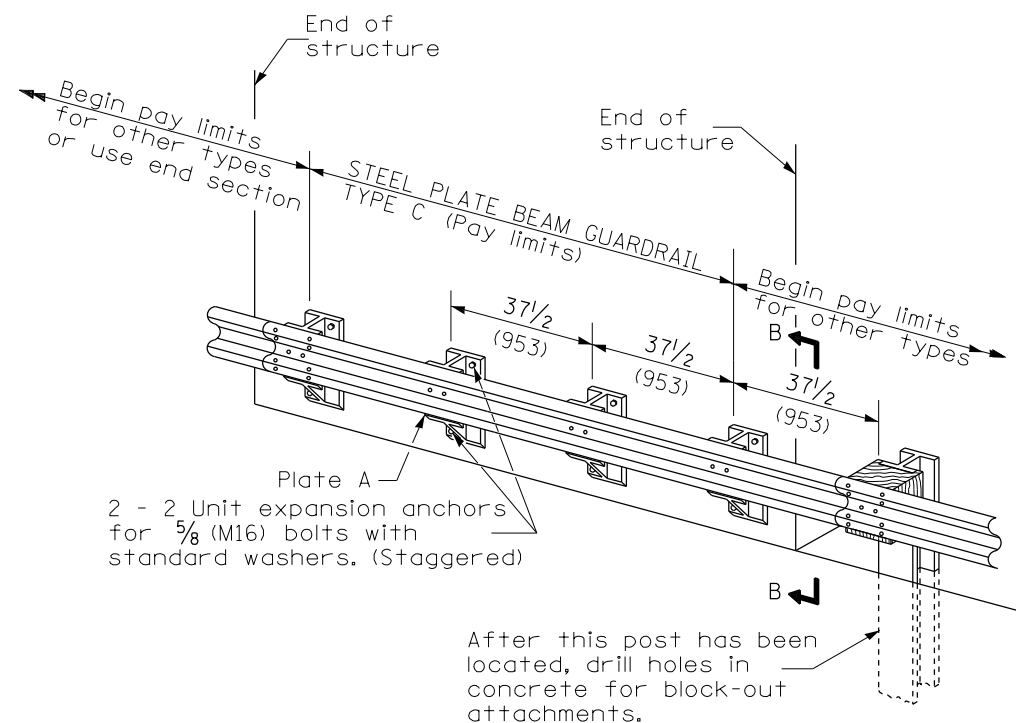


SECTION A-A



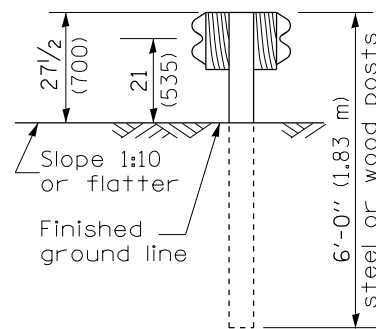
TYPE B

37 1/2 (953) Closed post spacing

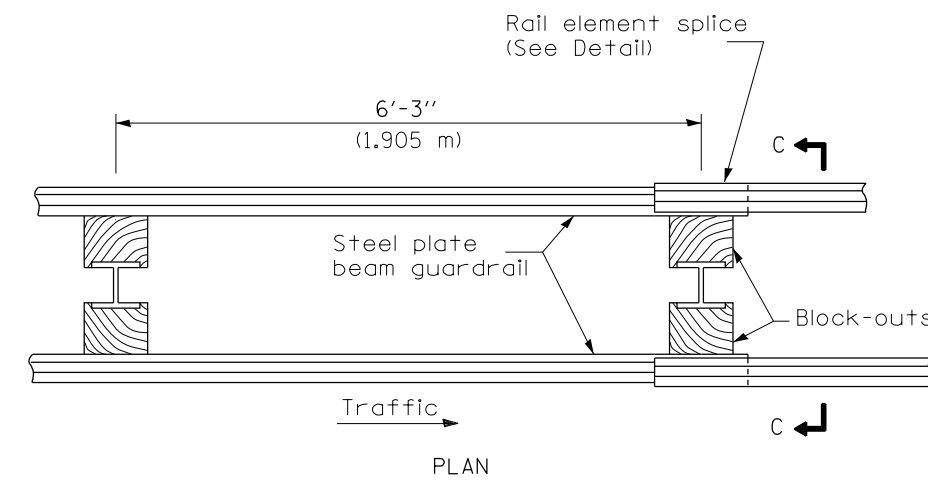


TYPE C

37 1/2 (953) Block-out spacing

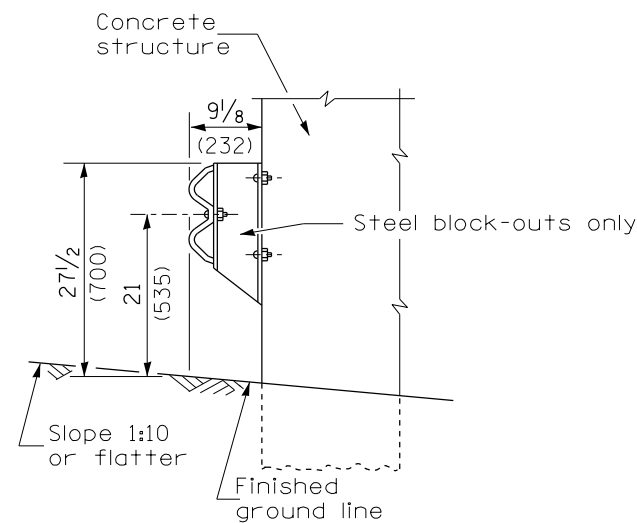


SECTION C-C



TYPE D

Double steel plate beam guardrail
6'-3" (1.905 m) typical post spacing



SECTION B-B

GENERAL NOTES

All slope ratios are expressed as units of vertical displacement to units of horizontal displacement (V:H).

All dimensions are in millimeters (inches) unless otherwise shown.

The existing steel posts may be drilled to match the bolt pattern shown herein for the wood block-out, or a new steel post shall be provided.

This detail is applicable to the guardrail system used prior to January 1, 2007. For details on the Midwest Guardrail System, see Standard 630001.

All dimensions are in inches (millimeters) unless otherwise noted.

03-01-07	NEW DETAIL	RJD			
03-07-11	Revised designer note	RJD			

**STATE OF ILLINOIS
DEPARTMENT OF TRANSPORTATION**

NOT TO SCALE

**STEEL PLATE BEAM GUARDRAIL, TYPE A,
6.75 FOOT POSTS**

SHT. 1 OF 4
CADD STD. 630011-D4

F.A.U. RTE.	SECTION	COUNTY	TOTAL SHEETS	SHEET NO.
6791	126RS-4	KNOX	76	71
FED. ROAD DIST. NO.			ILLINOIS FED. AID PROJECT	
			CONTRACT NO. 68B65	