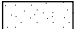



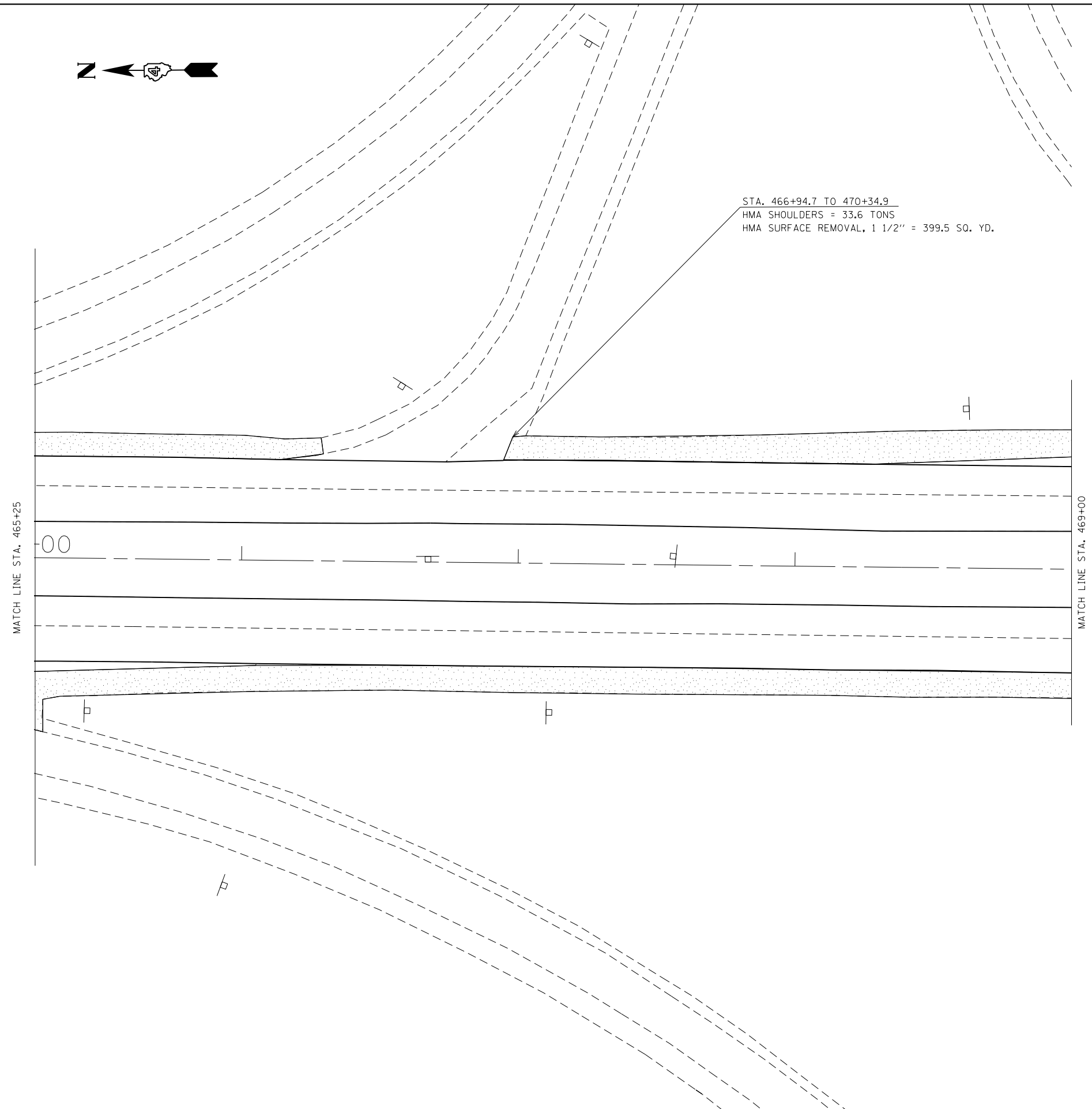




LEGEND	
	HMA SHOULDERS
	INCIDENTAL HMA
	HMA SURFACE REMOVAL BUTT JOINT
	HMA SURFACE REMOVAL VARIABLE DEPTH

STA. 466+94.7 TO 470+34.9
 HMA SHOULDERS = 33.6 TONS
 HMA SURFACE REMOVAL, 1 1/2" = 399.5 SQ. YD.



FILE NAME = D468B65-sht-plan.dgn	USER NAME = aubreygs	DESIGNED -	REVISED -
Default	PLOT SCALE = 40.0000' / in.	DRAWN -	REVISED -
	PLOT DATE = 3/20/2014	CHECKED -	REVISED -
		DATE -	REVISED -

**STATE OF ILLINOIS
 DEPARTMENT OF TRANSPORTATION**

**GENERAL PLAN SHEET
 SHEET 10 OF 17**

SCALE: SHEET OF SHEETS STA. TO STA.

F.A.U. RTE.	SECTION	COUNTY	TOTAL SHEETS	SHEET NO.
6791	126RS-4	KNOX	76	29
CONTRACT NO. 68B65				
ILLINOIS FED. AID PROJECT				