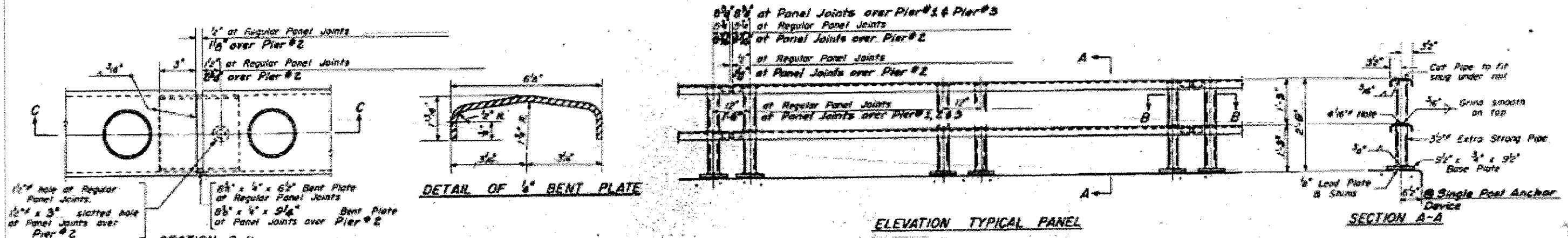


PARTIAL ELEVATION
Showing End Post only

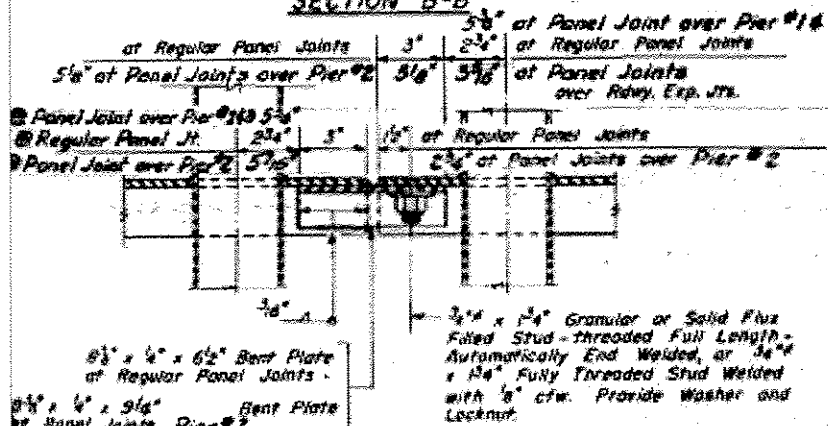
NOTE: For Full Elevation of Handrail See Sheet # 1



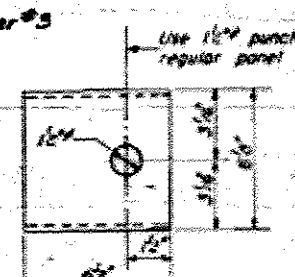
SECTION B-B

ELEVATION TYPICAL PANEL

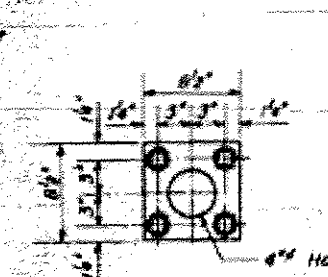
SECTION A-A



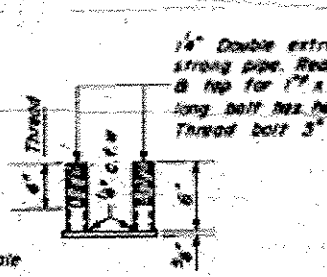
SECTION C-C



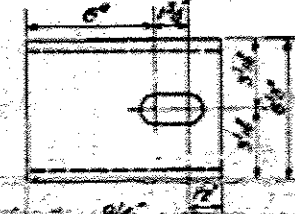
PLAN A



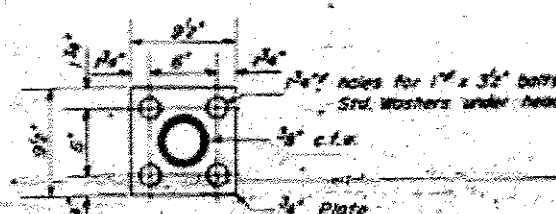
ANCHOR DEVICE
For Single Post at each End of Panel



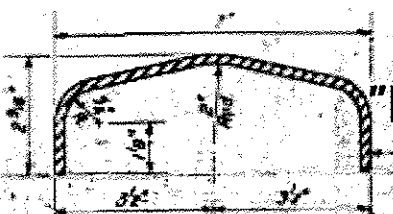
ANCHOR DEVICE
For Double Posts within Each Panel



PLAN B



BASE PLATE
ALL POSTS



DETAIL OF RAIL

GENERAL NOTES

After erection all Bolts and Washers shall be spot painted with one coat of red lead and polished. Two coats of aluminum paint. Provide 1-5\"/>

BILL OF MATERIAL

Item	Unit	Quantity
Metal Handrail	Lin. Ft.	665

"FOR INFORMATION ONLY"

HANDRAIL DETAILS
F.A.I. 80 SEC.06-1-HB-2
BUREAU COUNTY
97A.152-4679

DESIGNED: *A. J. McLaughlin*
CHECKED: *J. R. Ponce*
DRAWN: *James R. Ponce*
DATE: *Nov 21 1960*

R-12 (A) Drawn 4-18-60