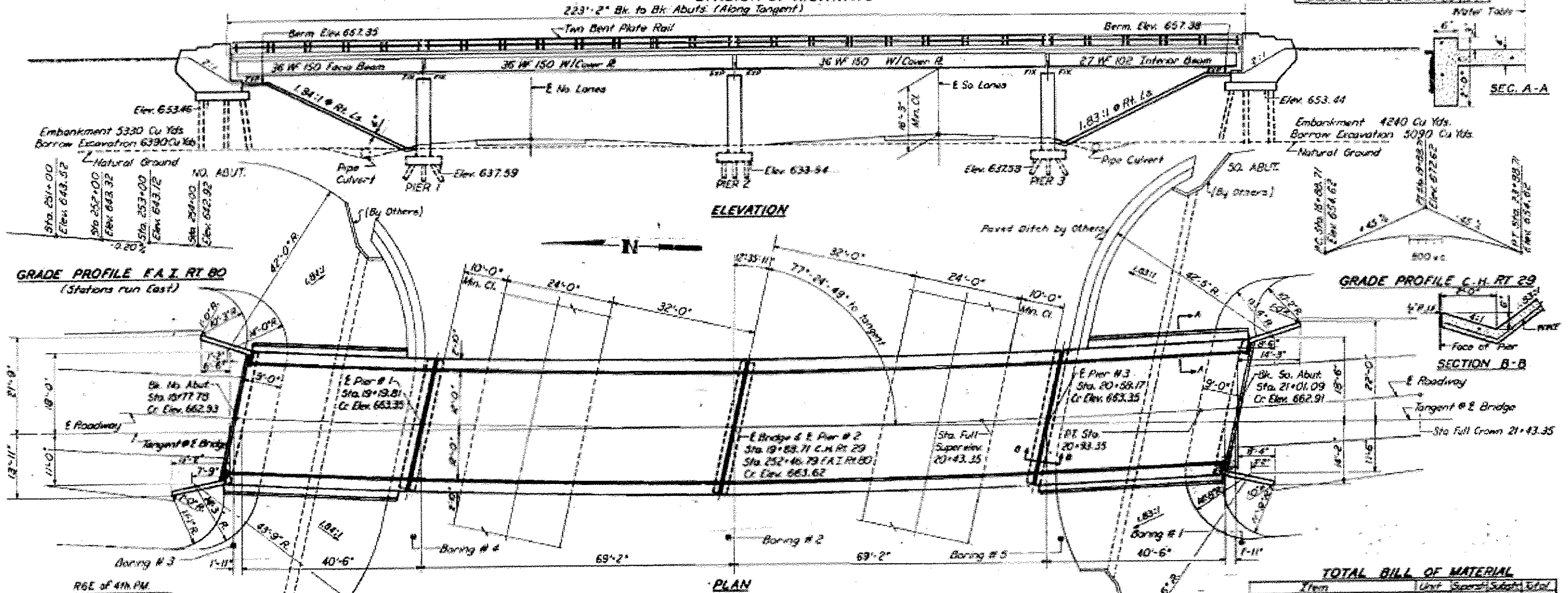


B.M. Spike and Washer in Power Pole 34' Rt Sta. 24+89.00
Elev. 644.31 (U.S.C.S.)

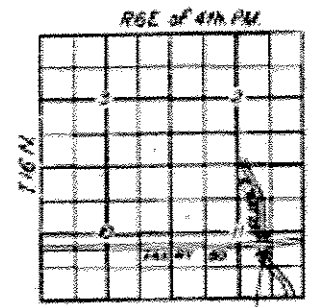
STATE OF ILLINOIS
DEPARTMENT OF PUBLIC WORKS & BUILDINGS
DIVISION OF HIGHWAYS

NO.	DATE	BY	REVISION
1	11/21/14	Y.P.	ISSUED FOR BIDDING
2	12/15/14	J.P.	REVISED PER COMMENTS
3	1/15/15	J.P.	REVISED PER COMMENTS
4	2/10/15	J.P.	REVISED PER COMMENTS
5	3/10/15	J.P.	REVISED PER COMMENTS
6	4/15/15	J.P.	REVISED PER COMMENTS
7	5/15/15	J.P.	REVISED PER COMMENTS
8	6/15/15	J.P.	REVISED PER COMMENTS
9	7/15/15	J.P.	REVISED PER COMMENTS
10	8/15/15	J.P.	REVISED PER COMMENTS
11	9/15/15	J.P.	REVISED PER COMMENTS
12	10/15/15	J.P.	REVISED PER COMMENTS



GRADE PROFILE F.A.I. RT 80
(Stations run East)

GRADE PROFILE G.H. RT 29



PROPOSED STRUCTURE
LOCATION PLAN

DESIGN STRESSES
 fc - 1400 p.s.i. Superc Sub
 ft - 75 p.s.i. Flgs.
 fs - 20,000 p.s.i. Reinf.
 fs - 18,000 p.s.i. Struct.
 n - 10

GENERAL NOTES

Class X Concrete shall be used throughout.
 The Concrete Floor Slab shall be finished in accordance with Article 51.19 of the Standard Specifications.
 Slope wall shall be reinforced with welded wire fabric, 6" x 6" mesh, #4 wires, weighing 53# per 100 Sq. Ft.
 Rivets 3/4", open holes 1/2".

All cover plates and beams to which cover plates are welded shall conform to the Specifications for Structural Steel for welding ASTM designation A-373.
 All rockers, bolsters, bearing plates, lead plates, pintles, and anchor bolts shall be fabricated and set in accordance with Article 51.15 of the Standard Specifications and are included in quantity of Structural Steel. Estimated Weight - 11070 #.
 Anchor bolts shall be set before riveting diaphragms over supports.
 All steel handrail posts shall be vertical.
 The following surfaces of expansion guards shall be given two shop coats of red lead paint. Outside face of vertical legs and top face of horizontal legs of 4" x 4" x 1/2" L's.

GENERAL NOTES (CONT.)

Expansion guards are included in quantity of Structural Steel. Estimated Weight - 2756 #.
 Except as otherwise provided, all Structural Steel shall receive one shop coat of red lead paint and two field coats of aluminum paint. See Articles 56.1 to 56.5 inclusive of the Standard Specifications.
 All paint shall be furnished and applied by the Contractor.
 The Contractor shall drive one (1) concrete test pile in a permanent location at the North Abutment and one (1) timber test pile near Pier # 3 as directed by the Engineer before ordering remainder of piles.
 Permitted forms will not be permitted in forming the superstructure.

CURVE DATA

Main Line
 P1 - 252+22.22
 I - 2° 32' 00"
 D - 0° 10'
 T - 762.12
 L - 1520.00
 E - 8.40
 R - 34,377.5

S.A. RT 29
 P1 - 17+20.00
 I - 22° 42' 42"
 D - 3° 00' 00"
 T - 382.69
 L - 757.04
 E - 38.59
 R - 1910.08
 S.E. - 0.025 ft.

STATION 252+46.79
 BUILT 1961 BY
 STATE OF ILLINOIS
 F.A.I. RT 80 SEC. 06-1-NB-2
 F.A. PROJ. I-80-1-104
 LOADING HIS-213

NAME PLATE LETTERING
 See Standard 2113

TOTAL BILL OF MATERIAL

Item	Unit	Supers	Substr	Total
Borrow Excavation	Cu Yds			4240
Class A Excavation for Strc	Cu Yds	172	128	300
Class X Concrete	Cu Yds	202.7	240.3	443.0
Structural Steel	Lbs	190310		190310
Metal Handrail	Lin Ft	443		443
Reinforcement Bars	Lbs	33,100	15,690	48,790
Scrapped Piles	Lin Ft		560	560
Timber Piles	Each		1	1
Concrete Piles	Each		605	605
Timber Piles (Concrete)	Each		1	1
Home Plates	Each		2	2
Pipe Cap. 18" (R.C.P.C.) 24"	Lin Ft			153
Slope Wall	Sq Yds			483
Protective Coat	Sq Yds	782		782

* Quantities included on sheet #5
 ** Cut-off walls included in quantity of slope wall.

"FOR INFORMATION ONLY"

GENERAL PLAN AND ELEVATION
 PROJECT I-80-1-1040
 F.A.I. RT 80 SEC. 06-1-NB-2
 BUREAU COUNTY
 STA. 252+46.79

LOADING HIS-213-44