

T.R. R.T.E.	SECTION	COUNTY	TOTAL SHEETS	SHEET NO.
60B	(60-1HB-2)BP	BUREAU	12	1
ILLINOIS CONTRACT NO. 66D93				

INDEX OF SHEETS

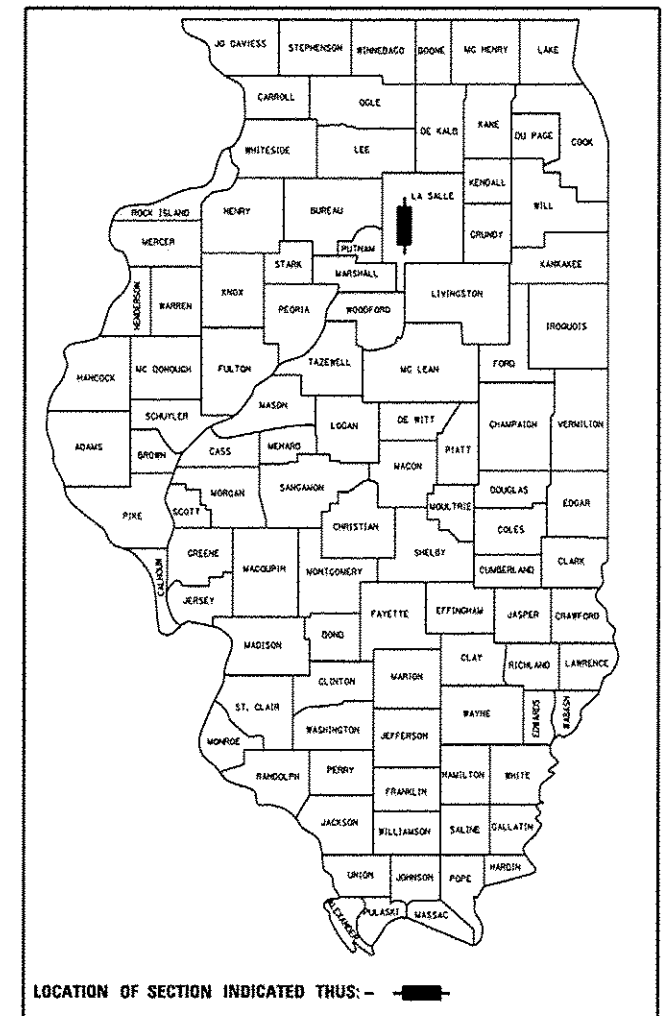
1. COVER SHEET
2. GENERAL NOTES
3. SUMMARY OF QUANTITIES
4. TYPICAL SECTION
5. TRAFFIC CONTROL AND PROTECTION, STANDARD 701400 (SPECIAL)
6. TRAFFIC CONTROL AND PROTECTION, STANDARD 701402 (SPECIAL)
7. STAGING DETAILS
- 8 - 12. EXISTING STRUCTURE PLANS - FOR INFORMATION ONLY

STANDARDS

- 701006-05 OFF-ROAD OPERATIONS 2L, 2W, 15' (4.5 m) TO 24" (600 mm) FROM PAVEMENT EDGE
- 701106-02 OFF-ROAD OPERATIONS, MULTILANE, MORE THAN 15' (4.5 m) AWAY
- 701201-04 LANE CLOSURE, 2L, 2W, DAY ONLY, FOR SPEEDS ≥ 45 MPH
- 701411-08 LANE CLOSURE, MULTILANE, AT ENTRANCE OR EXIT RAMP FOR SPEEDS ≥ 45 MPH
- 701428 TRAFFIC CONTROL SETUP AND REMOVAL FREEWAY/EXPRESSWAY
- 701901-03 TRAFFIC CONTROL DEVICES
- 704001-07 TEMPORARY CONCRETE BARRIER
- 701400-07

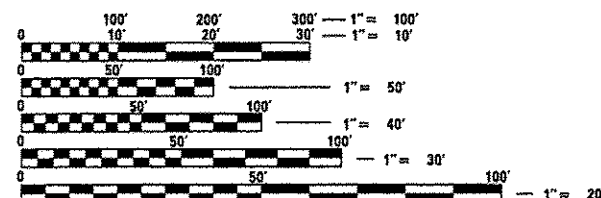
STATE OF ILLINOIS
DEPARTMENT OF TRANSPORTATION
DIVISION OF HIGHWAYS
PROPOSED
HIGHWAY PLANS
TR 60B (470 ST. E.)
SECTION (60-1HB-2)BP
BRIDGE PAINTING
BUREAU
STRUCTURE NO. 006-0121
CARRYING TR 60B (470 ST. E.)
OVER F.A.I. ROUTE 80 (I-80)
3.53 MILES EAST OF MINERAL

D-93-071-14



PROJECT LOCATION
STRUCTURE NO. 006-0121

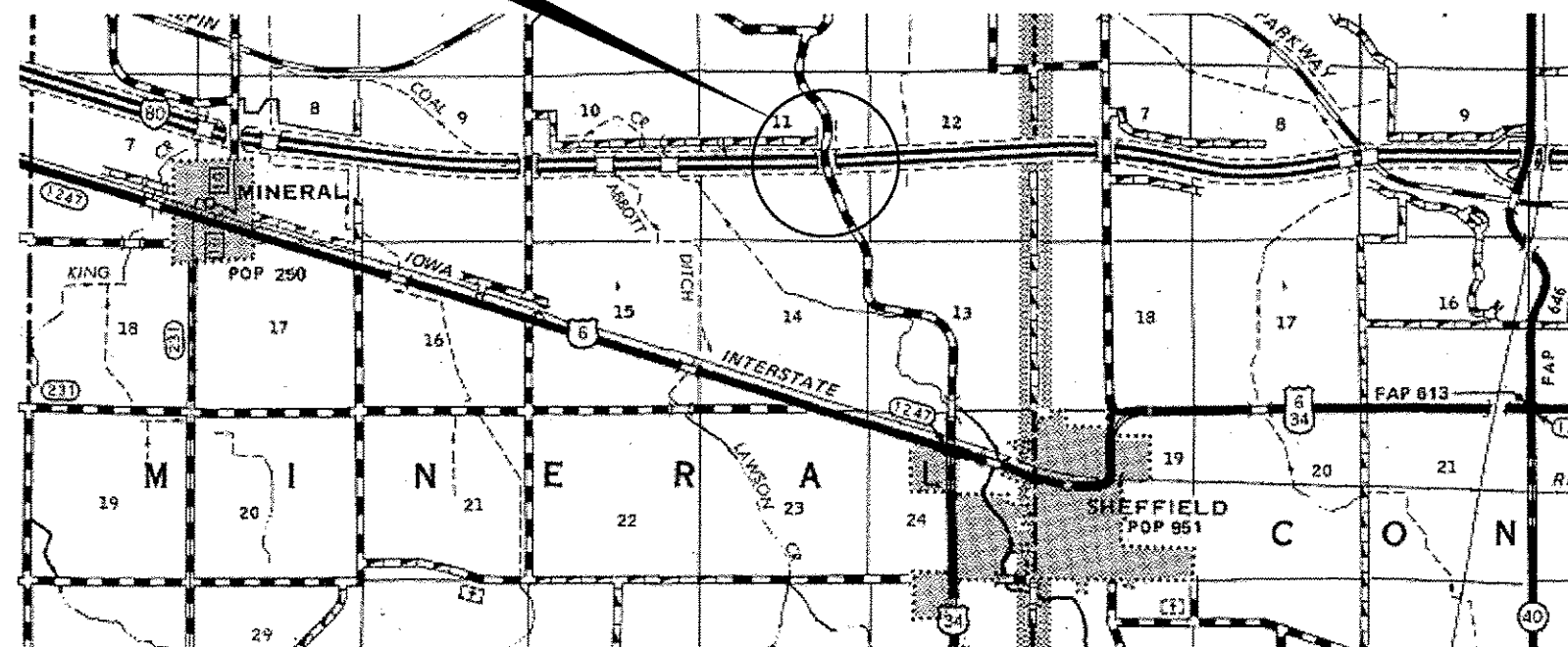
C-93-122-14



FULL SIZE PLANS HAVE BEEN PREPARED USING STANDARD ENGINEERING SCALES. REDUCED SIZED PLANS WILL NOT CONFORM TO STANDARD SCALES. IN MAKING MEASUREMENTS ON REDUCED PLANS, THE ABOVE SCALES MAY BE USED.

J.U.L.I.E.
JOINT UTILITY LOCATION INFORMATION FOR EXCAVATION
1-800-892-0123
OR 811

PROJECT ENGINEER: JOE KANNEL P.E.
UNIT CHIEF: RON WOODSHANK
TOWNSHIP: MINERAL
CONTRACT NO. 66D93



POINT LOCATION

RURAL	
INTERSTATE	
FAI RTE. 80	
2013	
ADT	17200
P.V.	62.36%
S.U.	3.34%
M.U.	34.30%

STATE OF ILLINOIS
DEPARTMENT OF TRANSPORTATION
DIVISION OF HIGHWAYS

SUBMITTED *April 16 2014*
Paul Coete P.E.
DEPUTY DIRECTOR OF HIGHWAYS, REGION ENGINEER

May 9 2014
John D. Baranzelli P.E.
ENGINEER OF DESIGN AND ENVIRONMENT

May 9 2014
Omec Osman P.E.
DIRECTOR OF HIGHWAYS, CHIEF ENGINEER

**PRINTED BY THE AUTHORITY
OF THE STATE OF ILLINOIS**