

F.A.I. RTE.	SECTION	COUNTY	TOTAL SHEETS	SHEET NO.
39	#	LASALLE	11	1
#D3		ILLINOIS CONTRACT NO. 66D72		
		PATCHING 2015-1		

STATE OF ILLINOIS
DEPARTMENT OF TRANSPORTATION
DIVISION OF HIGHWAYS

PROPOSED
HIGHWAY PLANS

FAI ROUTE 39 (I-39)
SECTION D3 PATCHING 2015-1

CRC PAVEMENT PATCHING
LASALLE COUNTY

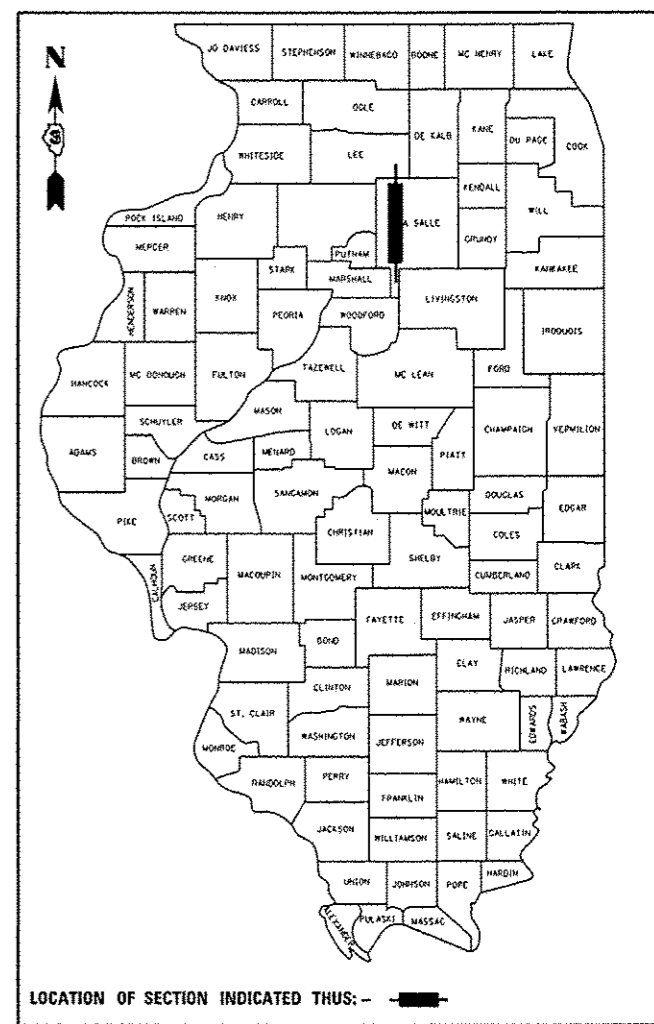
C-93-094-14

INDEX OF SHEETS

1. COVER SHEET
2. GENERAL NOTES
3. SUMMARY OF QUANTITIES
4. TYPICAL SECTIONS
- 5 - 7. PAVEMENT PATCHING SCHEDULES
8. PAVEMENT MARKING SCHEDULES
9. TRAFFIC CONTROL AND PROTECTION, STANDARD 701400 (SPECIAL)
10. PAVEMENT MARKINGS DETAILS
11. TEMPORARY INFORMATION SIGNING

STANDARDS

- | | |
|-----------|---|
| 000001-06 | STANDARD SYMBOLS, ABBREVIATIONS AND PATTERNS |
| 001001-02 | AREAS OF REINFORCEMENT BARS |
| 001006 | DECIMAL OF AN INCH AND OF A FOOT |
| 442001-04 | CLASS A PATCHES |
| 701101-04 | OFF-ROAD OPERATIONS MULTILANE, 15' (4.5 m) TO 24" (600 mm) FROM PAVEMENT EDGE |
| 701106-02 | OFF-ROAD OPERATIONS, MULTILANE, MORE THAN 15' (4.5 m) AWAY |
| 701401-08 | LANE CLOSURE, FREEWAY/EXPRESSWAY |
| 701411-08 | LANE CLOSURE, MULTILANE, AT ENTRANCE OR EXIT RAMP FOR SPEEDS ≥ 45 MPH |
| 701426-06 | LANE CLOSURE, MULTILANE INTERMITTENT OR MOVING OPERATION, FOR SPEEDS ≥ 45 MPH |
| 701428 | TRAFFIC CONTROL SETUP AND REMOVAL FREEWAY/EXPRESSWAY |
| 701901-03 | TRAFFIC CONTROL DEVICES |
| 701400-07 | |



FUNCTIONAL CLASSIFICATION
RURAL - INTERSTATE
F.A.I. ROUTE 39 (I-39)
2013 ADT = 18800
P.V = 65.29% M.U. = 29.26% S.U. = 5.45%

STATE OF ILLINOIS
DEPARTMENT OF TRANSPORTATION
DIVISION OF HIGHWAYS

SUBMITTED April 3 2014
Paul Coates P.E.
DEPUTY DIRECTOR OF HIGHWAYS, REGION ENGINEER

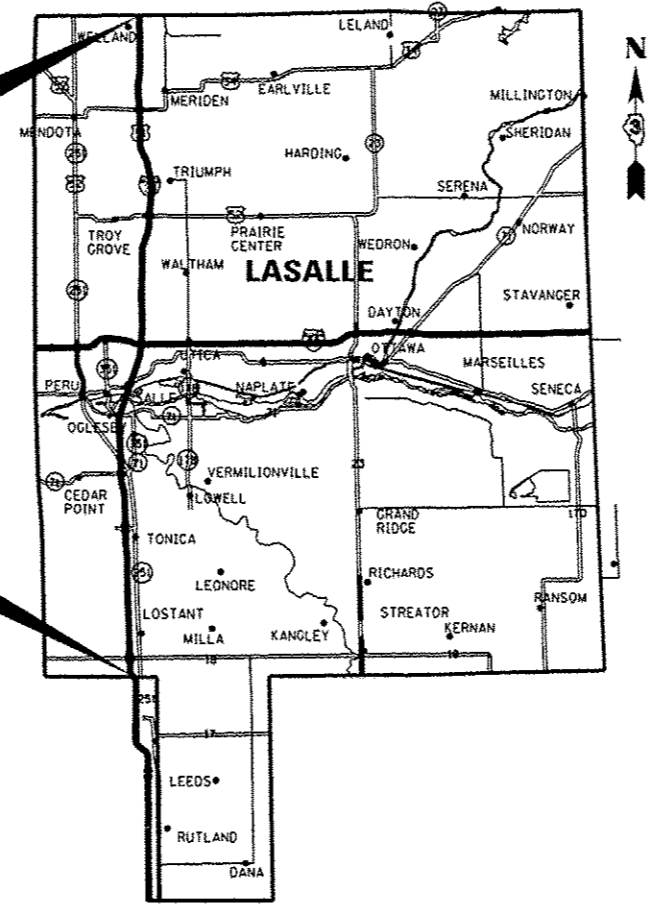
May 9 2014
John D. Baranzelli P.E.
ENGINEER OF DESIGN AND ENVIRONMENT

May 9 2014
Omer Osman P.E.
DIRECTOR OF HIGHWAYS, CHIEF ENGINEER

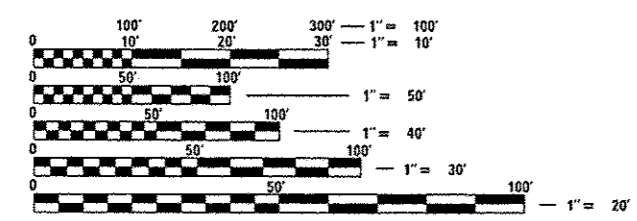
PRINTED BY THE AUTHORITY
OF THE STATE OF ILLINOIS

PROJECT ENDS
LEE COUNTY LINE
(M.P. 77.76)

PROJECT BEGINS
MARSHALL COUNTY LINE
(M.P. 40.24)



LOCATION MAP
NOT TO SCALE
GROSS LENGTH = 198106 FT. = 37.52 MI.
NET LENGTH = 844 FT. = 0.16 MI



FULL SIZE PLANS HAVE BEEN PREPARED USING STANDARD ENGINEERING SCALES. REDUCED SIZED PLANS WILL NOT CONFORM TO STANDARD SCALES. IN MAKING MEASUREMENTS ON REDUCED PLANS, THE ABOVE SCALES MAY BE USED.

J.U.L.I.E.
JOINT UTILITY LOCATION INFORMATION FOR EXCAVATION
1-800-892-0123
OR 811

PROJECT ENGINEER: JOE KANNEL P.E.
UNIT CHIEF: RON WOODSHANK
TOWNSHIP: VARIOUS
CONTRACT NO. 66D72