

F.A.P. RTE.	SECTION	COUNTY	TOTAL SHEETS	SHEET NO.
332	(10&0910-PT.1)TS-1(14)	WILL	33	1
		ILLINOIS	CONTRACT NO. 60X89	

STATE OF ILLINOIS  
DEPARTMENT OF TRANSPORTATION  
DIVISION OF HIGHWAYS

**PROPOSED  
HIGHWAY PLANS**

FAP ROUTE 332: IL RTE 394 (CALUMET EXPY)  
AT RICHTON ROAD  
SECTION: (10&0910-PT.1)TS-1(14)

**TRAFFIC SIGNAL MODERNIZATION  
WILL COUNTY**

C-91-250-14

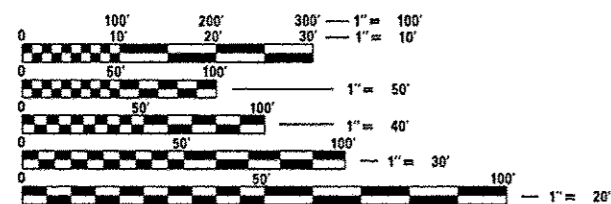
FOR INDEX OF SHEETS, SEE SHEET NO. 2

**DESIGN DESIGNATIONS:**

IL RTE 394 – OTHER PRINCIPAL ARTERIAL  
2013 ADT: 21,500  
POSTED SPEED LIMIT: 55 MPH

RICHTON RD – MAJOR COLLECTOR (W), LOCAL ROAD (E)  
2012 ADT: 2,400 (W), 1,800 (E)  
POSTED SPEED LIMIT: 35 MPH (W), 30 MPH (E)

THE PROJECT IS LOCATED IN  
THE VILLAGE OF CRETE IN WILL  
COUNTY.

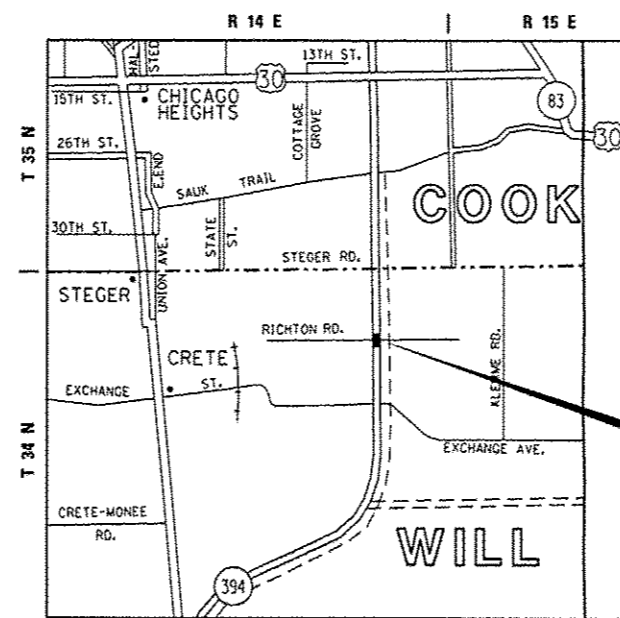
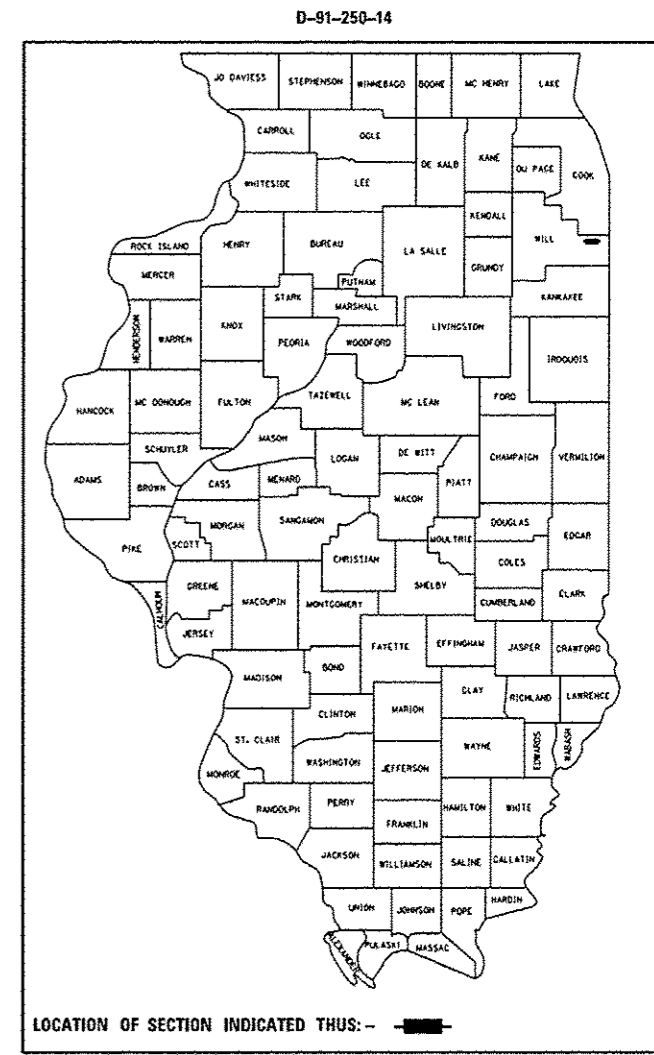


FULL SIZE PLANS HAVE BEEN PREPARED USING STANDARD  
ENGINEERING SCALES. REDUCED SIZED PLANS WILL NOT  
CONFORM TO STANDARD SCALES. IN MAKING MEASUREMENTS  
ON REDUCED PLANS, THE ABOVE SCALES MAY BE USED.

J.U.L.I.E.  
JOINT UTILITY LOCATION INFORMATION FOR EXCAVATION  
1-800-892-0123  
OR 811

PROJECT ENGINEER: LUKASZ POCIECHA /SHAR-DAY SMITH  
PROJECT MANAGER: SUDUD MAHMOUD (847) 708-4420

CONTRACT NO. 60X89



IL RTE 394 AT  
RICHTON RD

STATE OF ILLINOIS  
DEPARTMENT OF TRANSPORTATION  
DIVISION OF HIGHWAYS

SUBMITTED March 21 2014

John Fortman  
DEPUTY DIRECTOR OF HIGHWAYS, REGION ENGINEER

May 9 2014  
John D. Baranzelli, P.E.  
ENGINEER OF DESIGN AND ENVIRONMENT

May 9 2014  
Emir Osman, P.E.  
DIRECTOR OF HIGHWAYS, CHIEF ENGINEER

PRINTED BY THE AUTHORITY  
OF THE STATE OF ILLINOIS