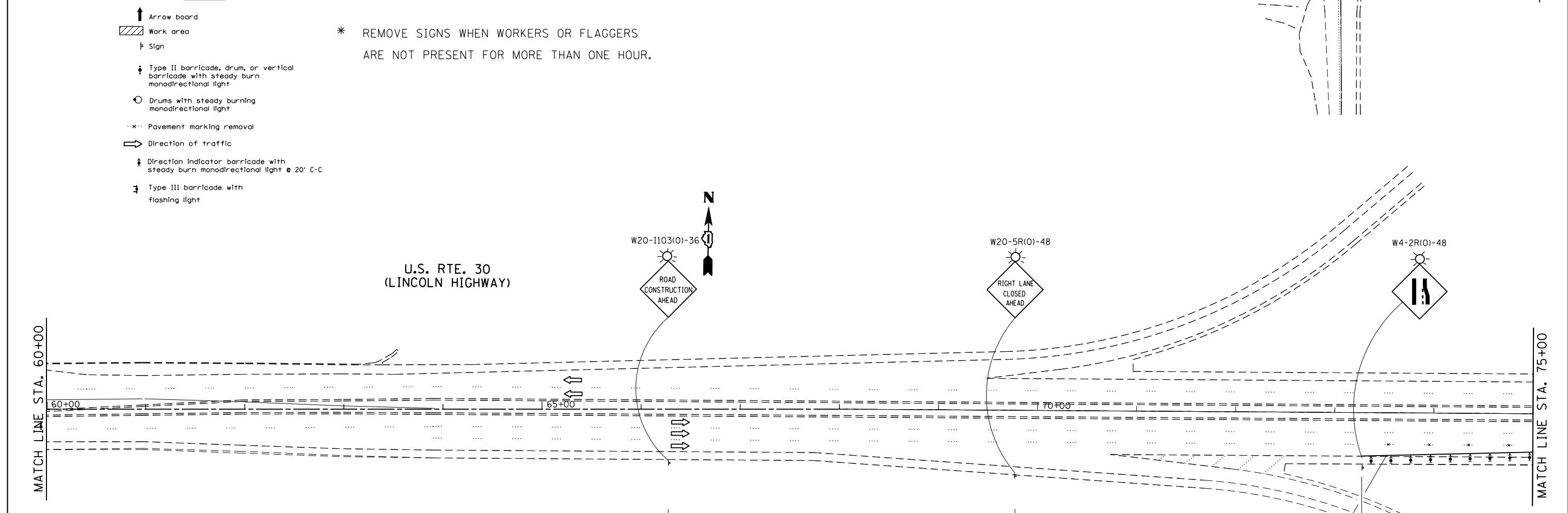


SYMBOLS

- ↑ Arrow board
- ▨ Work area
- ⊢ Sign
- ⊣ Type II barricade, drum, or vertical barricade with steady burn monodirectional light
- ⊙ Drums with steady burning monodirectional light
- ⋯ Pavement marking removal
- Direction of traffic
- ⊣ Direction Indicator barricade with steady burn monodirectional light @ 20' C-C
- ⊣ Type III barricade with flashing light

* REMOVE SIGNS WHEN WORKERS OR FLAGGERS ARE NOT PRESENT FOR MORE THAN ONE HOUR.



NOTES

1. EXISTING CONFLICTING PAVEMENT MARKING LINES SHALL BE REMOVED.
2. ALL SIGNS SHALL BE POST MOUNTED.



FILE NAME = c:\pwork\work\pwork\hardnettr\d0374764\04114-sht-plan.dgn	USER NAME = hardnettr	DESIGNED -	REVISED -
		DRAWN -	REVISED -
		CHECKED -	REVISED -
		DATE -	REVISED -
Default	PLOT DATE = 4/4/2014		

**STATE OF ILLINOIS
DEPARTMENT OF TRANSPORTATION**

**US 30 OVER I-57
TRAFFIC CONTROL PLAN STAGE I**

SCALE: SHEET 1 OF 3 SHEETS STA. TO STA.

F.A.P. RTE.	SECTION	COUNTY	TOTAL SHEETS	SHEET NO.
353	0404-1004HB-BR	COOK	28	17
CONTRACT NO. 60X21				
ILLINOIS FED. AID PROJECT				