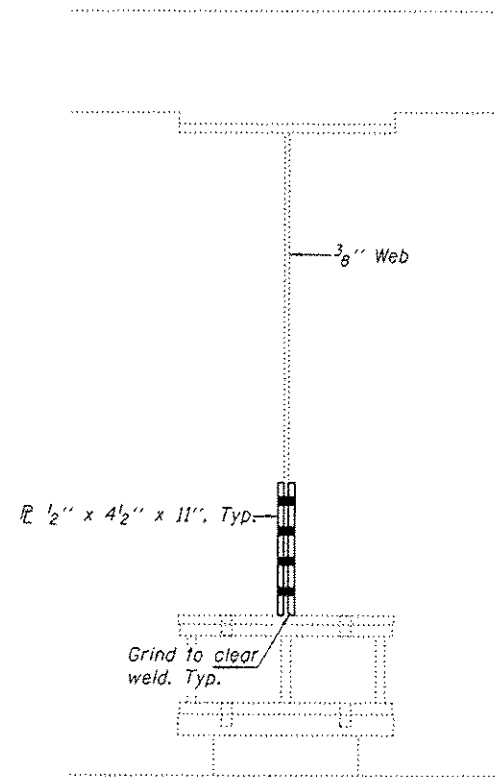


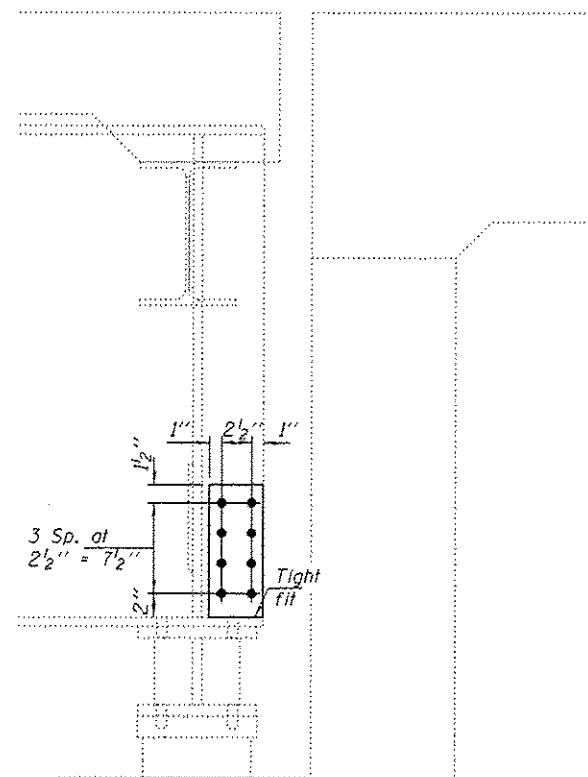
➔ A



↳ A

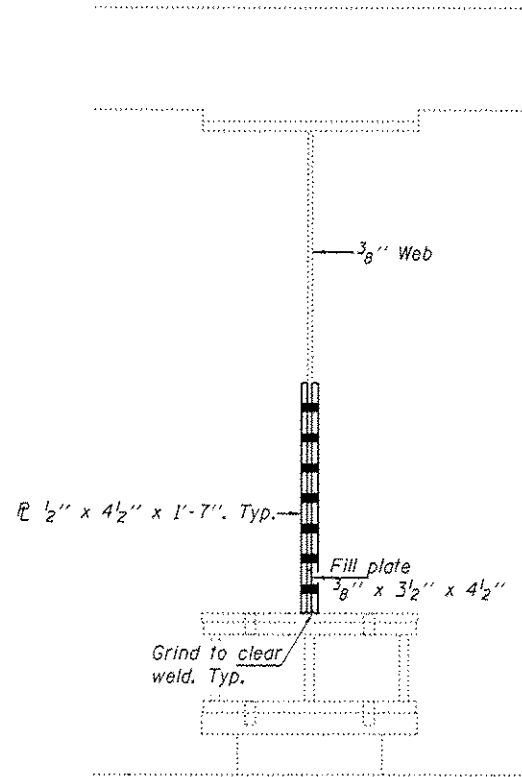
REPAIR A

Typ. of:
 BM 3 E. Abut., BM 14 E. Abut., BM 15 E. Abut.,
 BM 16 E. Abut., BM 4 W. Abut. & BM 5 W. Abut.



SECTION A-A

➔ C

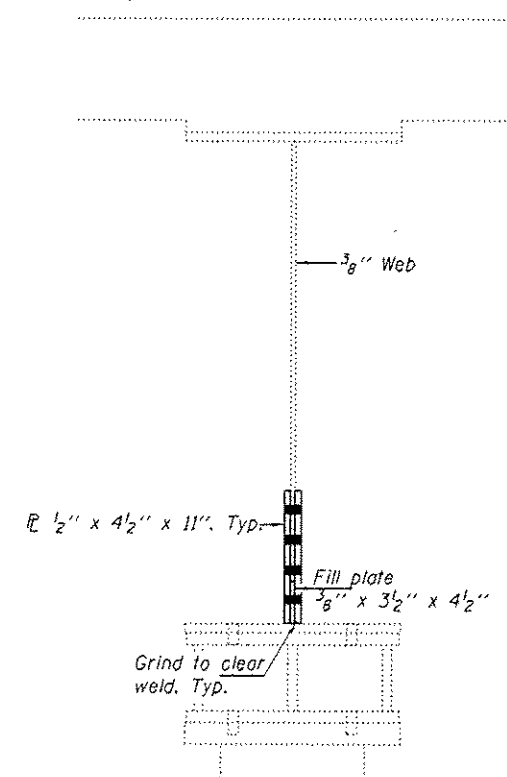


↳ C

REPAIR C

Typ. of:
 BM 10 E. Abut.

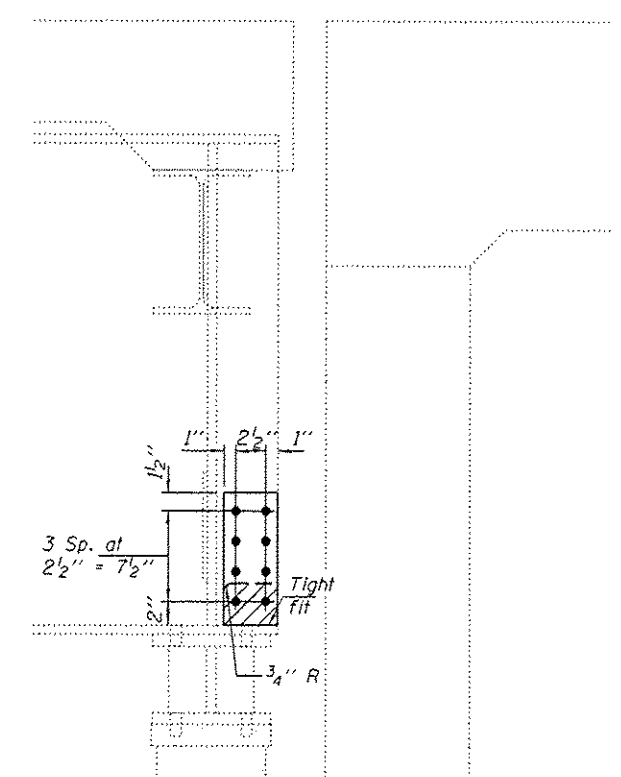
➔ B



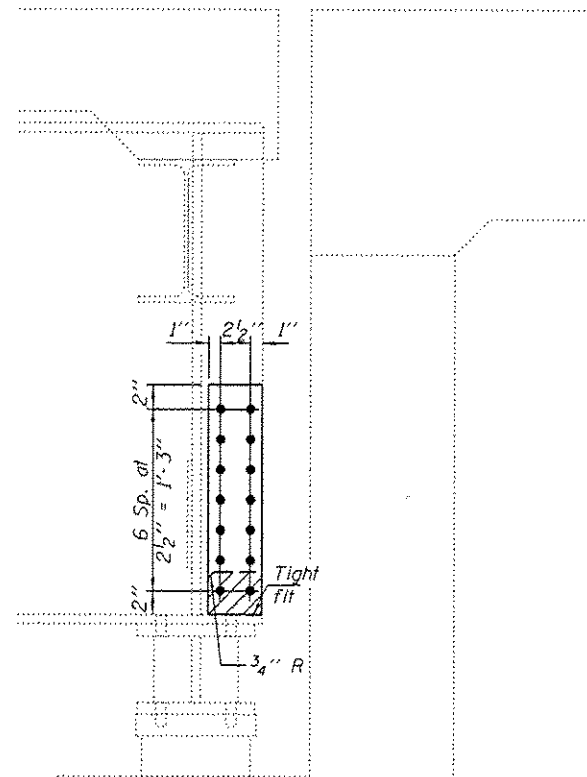
↳ B

REPAIR B

Typ. of:
 BM 13 E. Abut., BM 3 W. Abut. & BM 6 W. Abut.



SECTION B-B



SECTION C-C

Notes:
 Hatched areas indicate removal. Cost included with Structural Steel Repair.
 Use holes in new plates as a template for drilling holes in girder web.

DESIGNED - SMR	EXAMINED
CHECKED - ATH	PASSED
DRAWN - baliva	
CHECKED - SMR ATH	

 ACTING ENGINEER OF STRUCTURAL SERVICES	DATE - APRIL 22, 2014
 ACTING ENGINEER OF BRIDGES AND STRUCTURES	REVISED
	REVISED

STATE OF ILLINOIS
 DEPARTMENT OF TRANSPORTATION

REPAIR DETAILS	
SN 016-0285	
SHEET NO. 9 OF 12 SHEETS	

F.A.I. RTE.	SECTION	COUNTY	TOTAL SHEETS	SHEET NO.
57	0404-1004HB-BR	COOK	28	12
CONTRACT NO. 60X21			ILLINOIS FED. AID PROJECT	