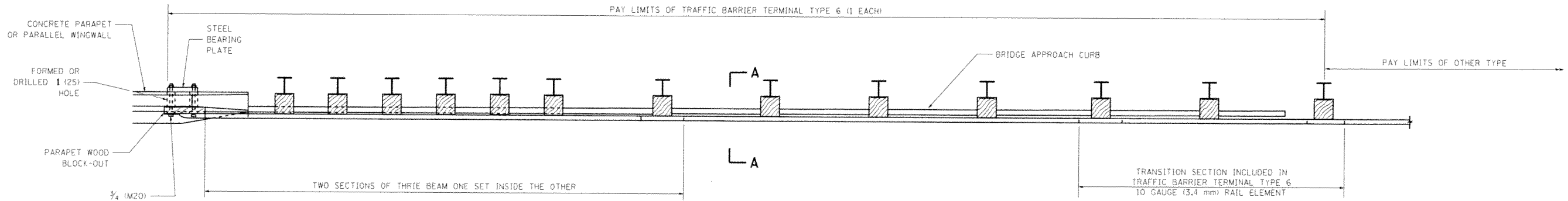
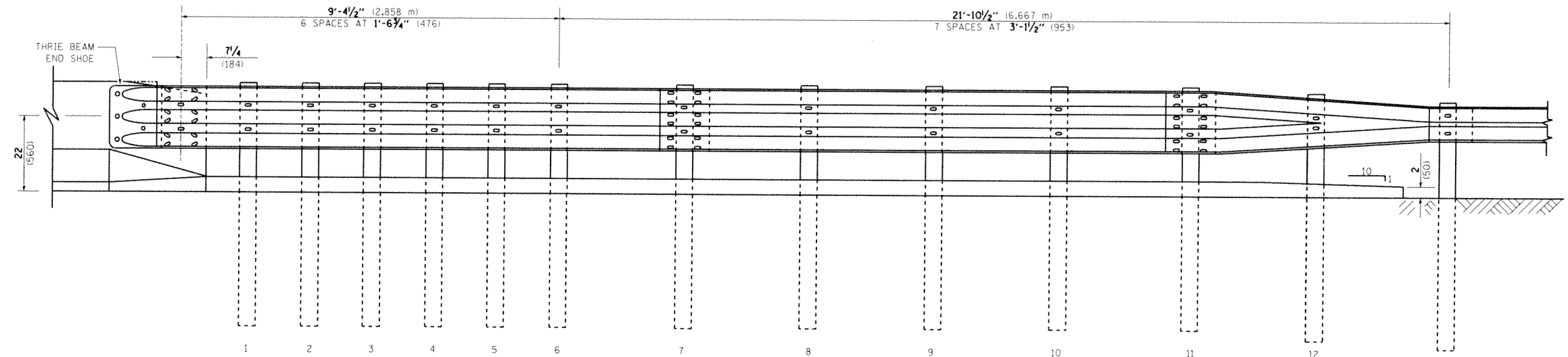


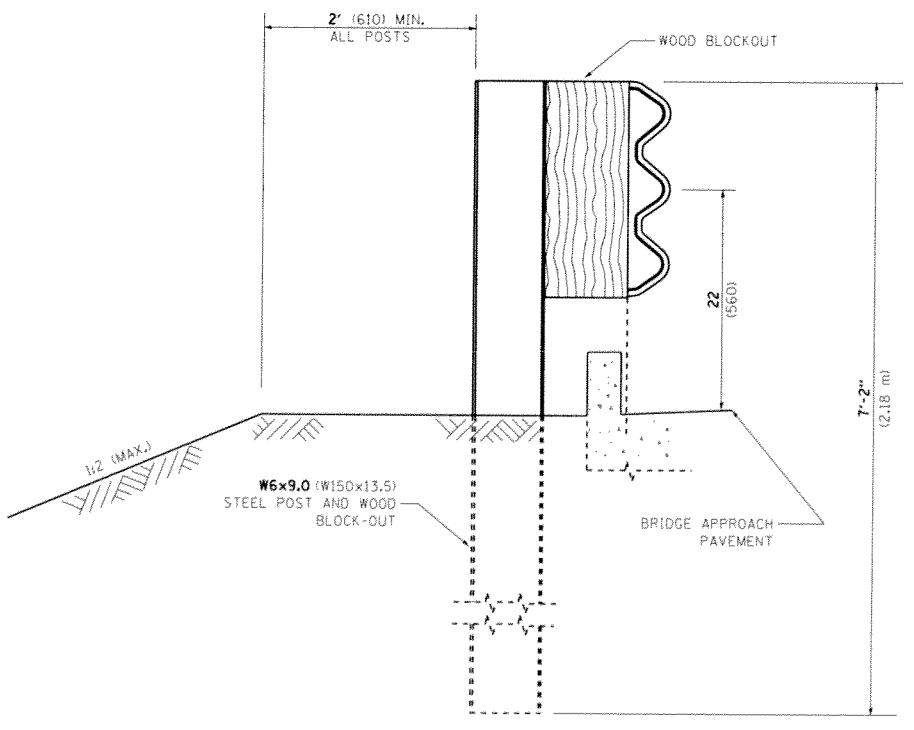
PARAPET OR WINGWALL



PLAN



ELEVATION



SECTION A-A

GENERAL NOTES

TO BE USED WHEN CONNECTING TO EXISTING GUARD RAILING PRIOR TO THE MIDWEST GUARDRAIL SYSTEM.
 SEE STANDARD 630001 FOR DETAILS OF GUARDRAIL NOT SHOWN.
 THRIE BEAM RAIL SHALL BE BOLTED TO BLOCK-OUT AT ALL POSTS.
 SEE STANDARD 420401 FOR DETAILS OF BRIDGE APPROACH PAVEMENT.
 ALL SLOPE RATIOS ARE EXPRESSED AS UNITS OF VERTICAL DISPLACEMENT TO UNITS OF HORIZONTAL DISPLACEMENT (V:H).
 ALL DIMENSIONS ARE IN INCHES (MILLIMETERS) UNLESS OTHERWISE SHOWN.

FILE NAME = c:\pwwork\pwwidat\steebps\0329923\Dist	USER NAME = steebps	DESIGNED -	REVISED - STATE STANDARD:	STATE OF ILLINOIS DEPARTMENT OF TRANSPORTATION	TYPE 6 TERMINAL FOR USE WITH 21" HIGH SPBGR				F.A.P. RTE. 557	SECTION 2013-048I	COUNTY KANE	TOTAL SHEETS 24	SHEET NO. 19
	PLOT SCALE = 100.0000 / 1 in.	DRAWN -	631031-05 - 02/19/2008		SCALE: NONE	SHEET NO. 1 OF 3 SHEETS	STA.	TO STA.	BM 22		CONTRACT NO. 60X02		
	PLOT DATE = 3/20/2014	CHECKED -	REVISED -		FED. ROAD DIST. NO. 1 ILLINOIS FED. AID PROJECT								
		DATE -	REVISED -										