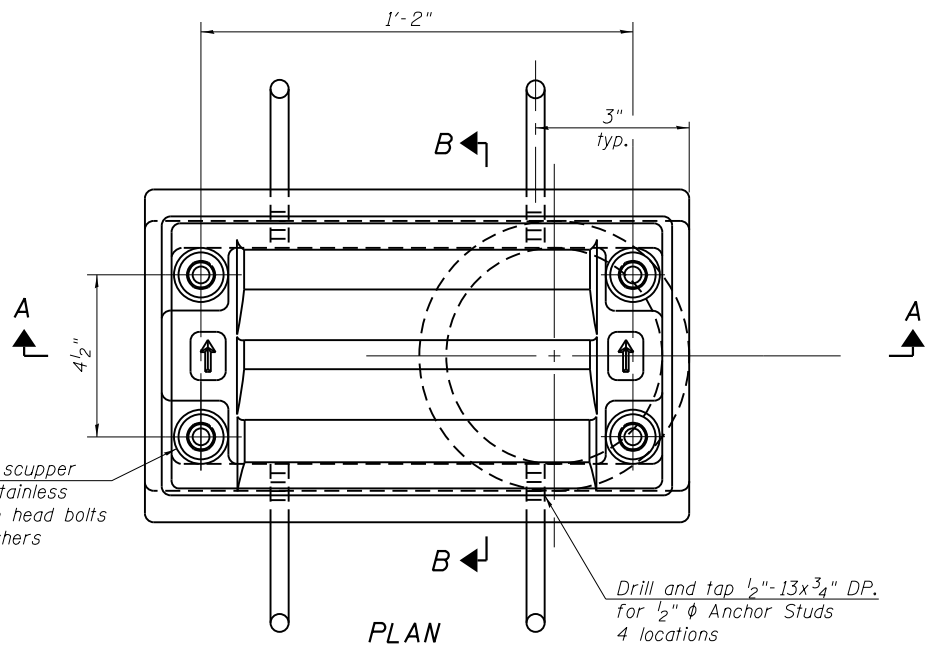


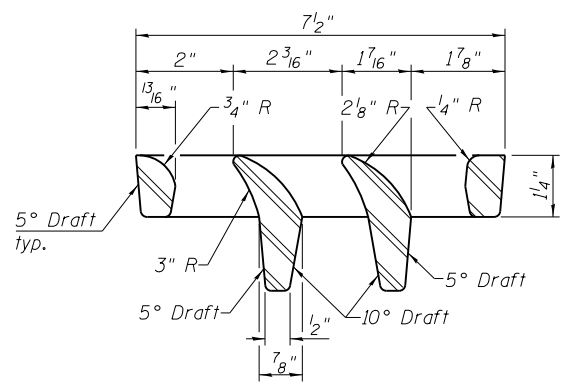
FILE NAME = SA\JUL163800-6399\6346-062\Micro\Structural\Median\0160540-50\NSZ-05-Scupper-Details.dgn



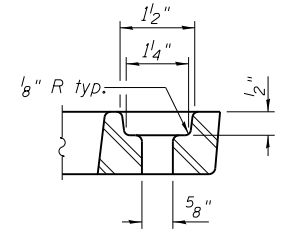
Drill and tap scupper for 4 1/2" φ stainless steel hexagon head bolts with lock washers

**PLAN**

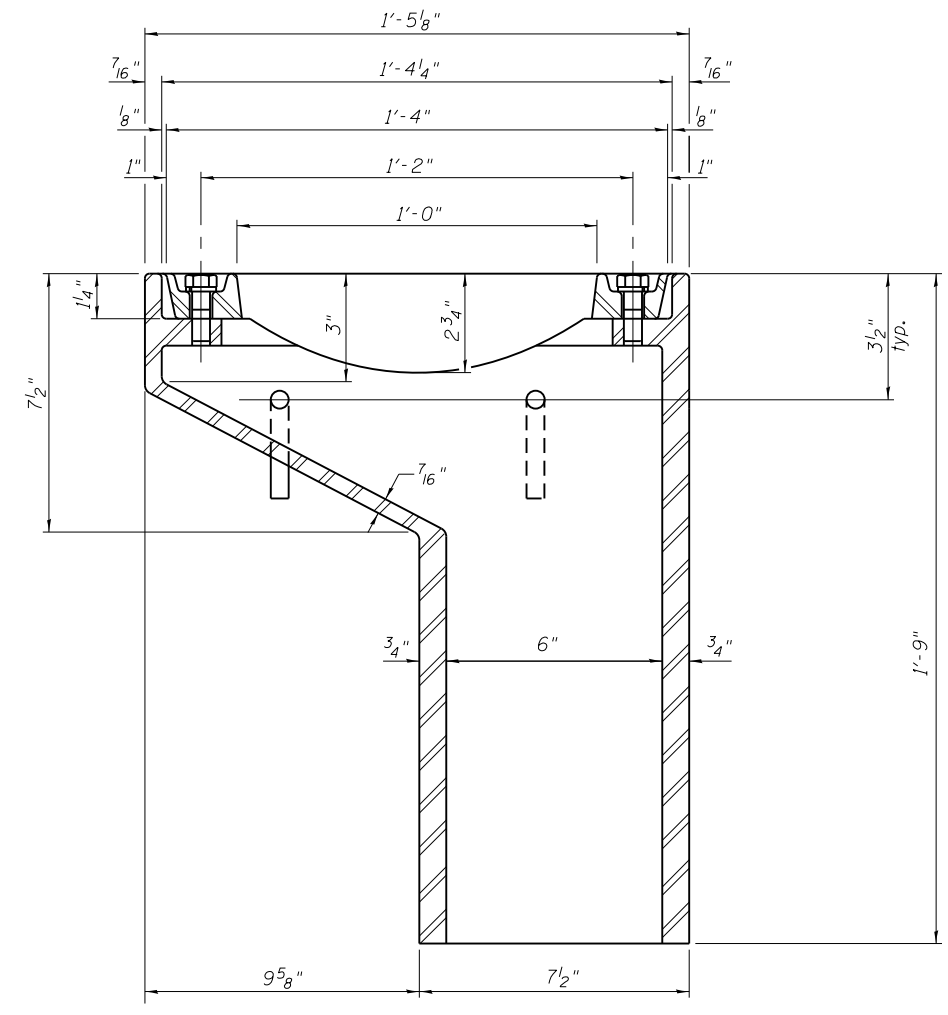
Drill and tap 1/2"-13x3/4" DP. for 1/2" φ Anchor Studs 4 locations



**VANE GRATE DETAIL**

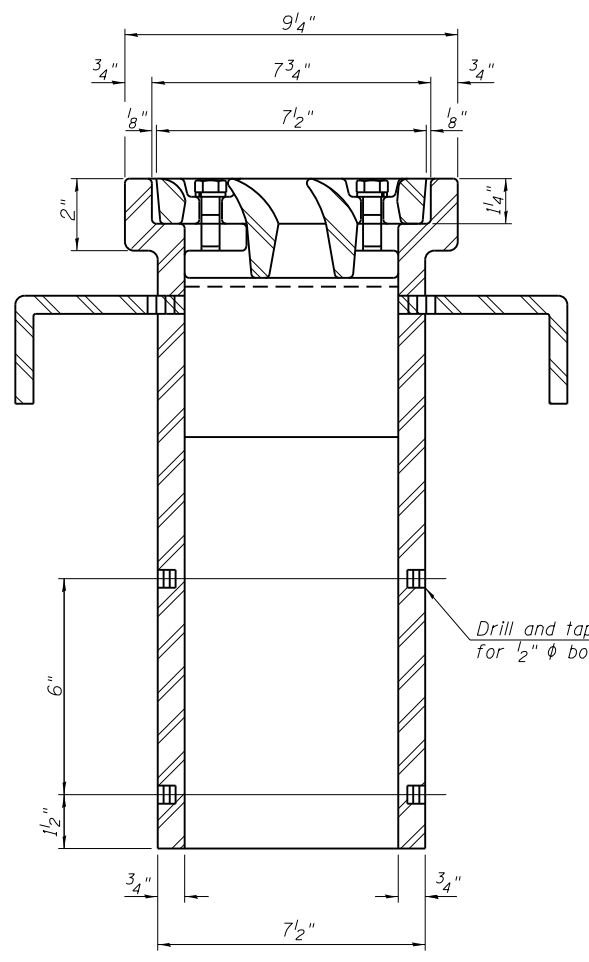


**BOLT HOLE DETAIL**



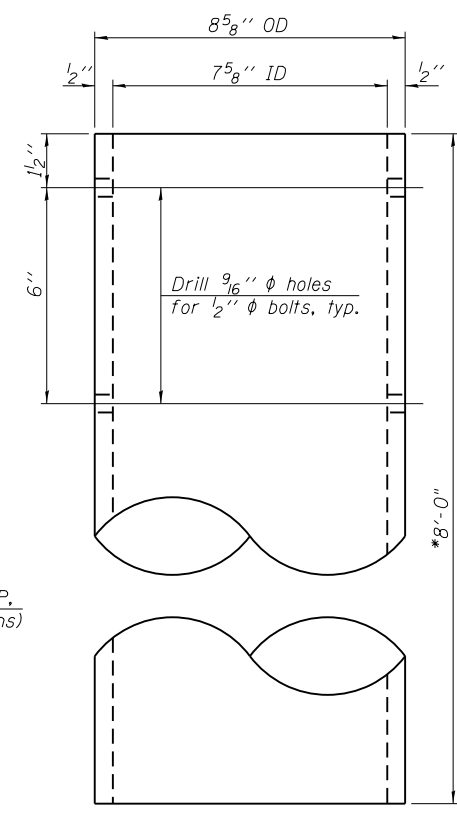
**SECTION A-A**

See sheet 1 of 5 for scupper location relative to median.



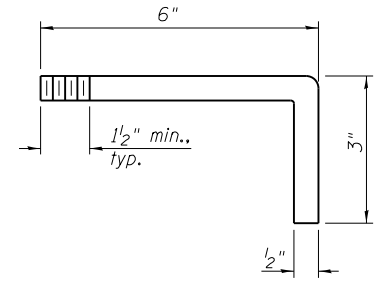
**SECTION B-B**

Drill and tap 1/2"-13x1/2" DP. for 1/2" φ bolts. (4 locations)



**DOWNSPOUT**

Notes:  
\* Contractor to verify a minimum clearance of 6-inches between bottom of girder and downspout.



**ANCHOR STUD DETAIL**

**BILL OF MATERIAL**

ITEM	UNIT	QUANTITY
Drainage Scupper, DS-11	Each	10

DS-11

7-1-10



USER NAME =	DESIGNED - MJD	REVISED
PLOT SCALE =	CHECKED - DJW	REVISED
PLOT DATE =	DRAWN - BJF	REVISED
	CHECKED - RRD	REVISED

STATE OF ILLINOIS  
DEPARTMENT OF TRANSPORTATION

DRAINAGE SCUPPER, DS-11  
STRUCTURE NO. 016-0540

SHEET NO. 5 OF 5 SHEETS

F.A.U. RTE.	SECTION	COUNTY	TOTAL SHEETS	SHEET NO.
2697	B-N-5	COOK	129	90
CONTRACT NO. 60T24				
ILLINOIS FED. AID PROJECT				